

Tacoma Harbor EB-1



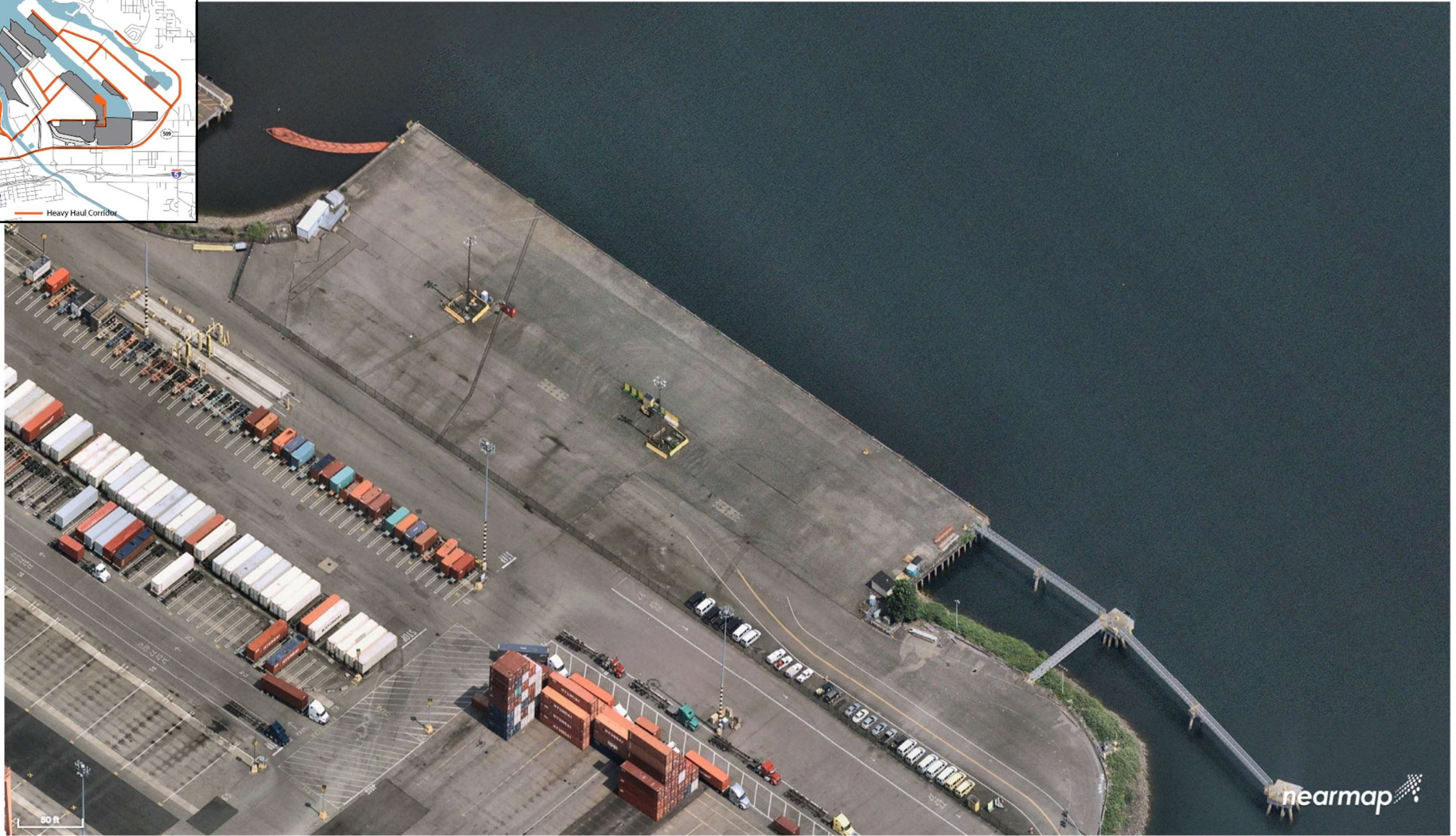
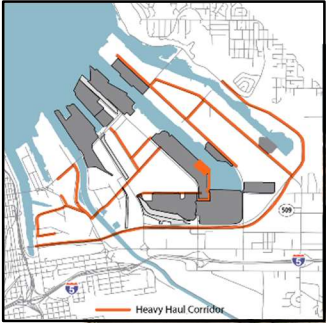


THE NORTHWEST
SEAPORT ALLIANCE
SEATTLE + TACOMA

TACOMA HARBOR: EB-1

2340 E Alexander Ave. • Tacoma, WA 98421 • USA
Contact: Andre Elmaleh | 253-592-6792 | aelmaleh@nwseaportalliance.com

OPERATED BY:	The Northwest Seaport Alliance
WEBSITE:	www.nwseaportalliance.com
FIRMS CODE:	X218
GENERAL MANAGER:	Bob Meyer
CONTACT:	253-383-9437
HOURS OF OPERATION:	Monday-Friday; Gate open 0800-1700 (Closed 12noon-1:00p.m. daily)
ACREAGE:	26 acres (10 hectares)
TERMINAL BERTHING:	1,200 lineal feet (366 meters) of contiguous berth with a water depth of -51 feet (-15.5 meters) MLLW
WHARF HEIGHT:	21.5 feet (6.5 meters)
PIER LOAD CAPACITY:	1,000 PSF; equipped with a 120 ft. x 110 ft. heavy lift pad w/2,000 PSF strength rating
CARGO HANDLED:	Breakbulk and Ro/Ro cargoes
RAIL ACCESS:	On-dock rail spur
HIGHWAY ACCESS:	2 miles from I-5 via Port of Tacoma Road; I-90 (E/W) 30 miles north via I-5 or SR- 18
SUPPORT SERVICES:	Dedicated customer service office
EFFICIENCIES:	120' section of removable bull rail
SECURITY:	Terminal area is lighted, fully secured and monitored 24/7
PRIMARY CLIENTS:	Eukor Car Carriers, Hyundai-GLOVIS, "K" Line Ro/Ro, Liberty Global Logistics, NYK Ro/Ro, MOL Ro/Ro, Wallenius Wilhelmsen Ocean (WWO), other carriers on inducement



Tacoma Harbor BLAIR TERMINAL





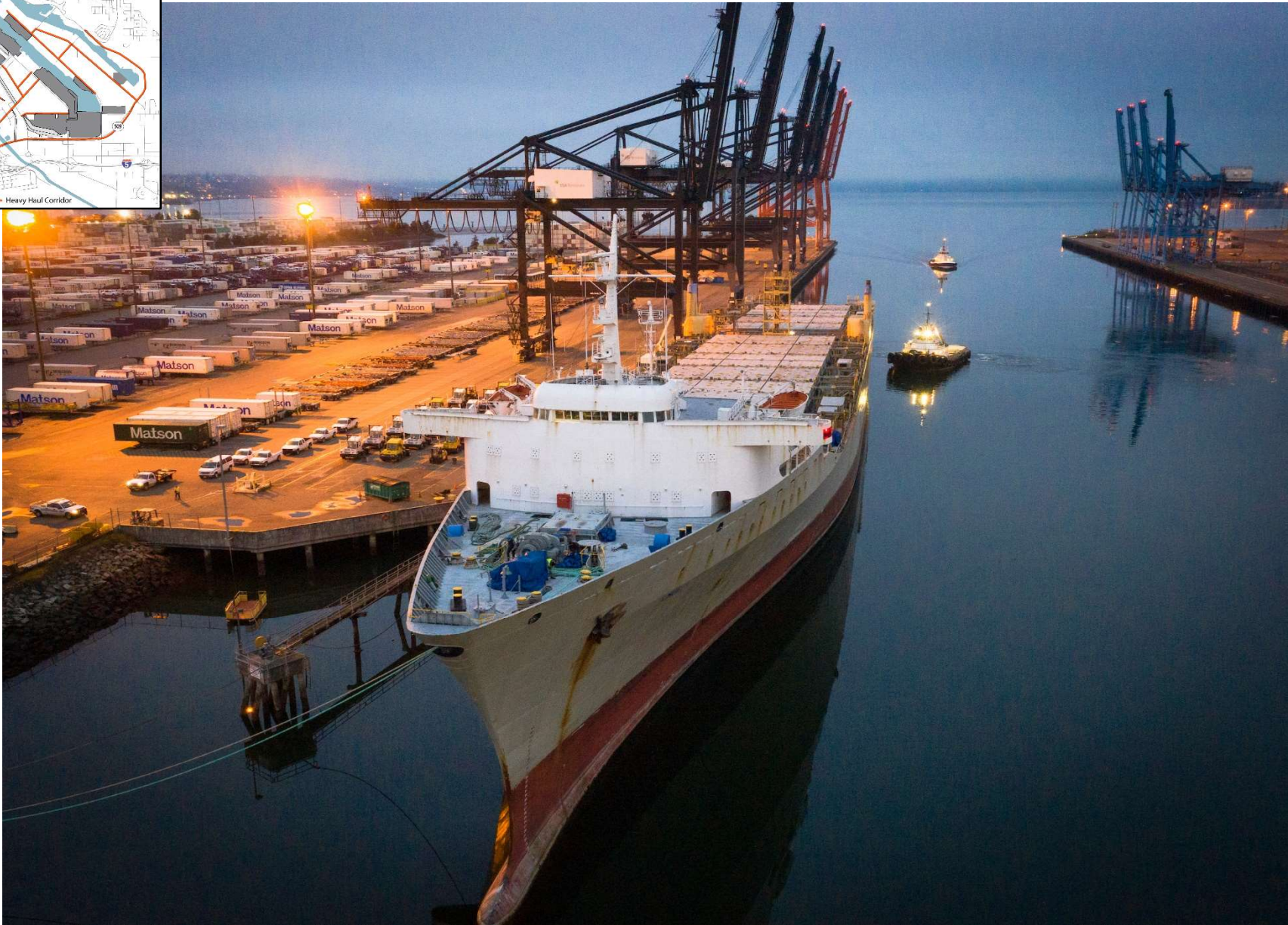
THE NORTHWEST
SEAPORT ALLIANCE
SEATTLE + TACOMA

TACOMA HARBOR: BLAIR TERMINAL

3002 Marshall Ave. • Tacoma, WA 98421 • USA

Contact: Andre Elmaleh | 253-592-6792 | aelmaleh@nwseaportalliance.com

OPERATED BY:	The Northwest Seaport Alliance
WEBSITE:	www.nwseaportalliance.com
FIRMS CODE:	X214
GENERAL MANAGER:	Andre Elmaleh
CONTACT:	253 597-6792
HOURS OF OPERATION:	Ad Hoc
ACREAGE:	3
TERMINAL BERTHING:	600 lineal feet (366 meters) berth length, with breasting and mooring dolphins, Pier depth: -51 feet (-15.5 meters) MLLW
WHARF HEIGHT:	21.5 feet (6.5 meters)
PIER LOAD CAPACITY:	1,000PSF with a Heavy Lift Section (2,000PSF)
CARGO HANDLED:	Automobiles
RAIL ACCESS:	None
HIGHWAY ACCESS:	2 miles from I-5 via Port of Tacoma Road, I-90 (EW) 30 miles north via I-5 or SR -18
SUPPORT SERVICES:	Customer Service Staff
EFFICIENCIES:	Fully Removable Bullrail
SECURITY:	Fully lighted, and secured, monitored 24/7 via cameras
PRIMARY CLIENTS:	Hyundai – GLOVIS, EUKOR, “K” Line America, MOL, NYK, Liberty GLOBAL



Tacoma Harbor

WEST SITCUM
TERMINAL



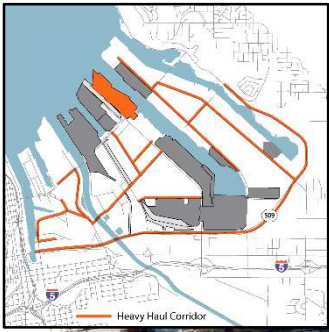


TACOMA HARBOR: WEST SITCUM TERMINAL

1675 Lincoln Ave., Bldg. 950 • Tacoma, WA 98421 • USA

Contact: SSA Terminals (Tacoma) LLC | Wes Anderson | 253-680-4430 | Wes.Anderson@ssamarine.com

OPERATED BY:	SSA Terminals (Tacoma), LLC
WEBSITE:	www.ssamarine.com/locations/ssa-terminals-tacoma ; https://www.matson.com/ocean-services/port-locations/tacoma.html at Port of Tacoma
FIRMS CODE:	X335
HOURS OF OPERATION:	Mon/Tues/Thurs; Gate open 0800-1630, Wed/Fri: 0700-2200 (closed 12Noon-1:00PM daily)
ACREAGE:	122.4 acres (49.5 hectares)
VESSEL HANDLING CAPABILITY:	8,000 TEU vessel; 1 x 8,000 TEU vessel
CRANE RAIL BERTHING:	Approximately 2,200 lineal feet (671 meters) of contiguous berth at a depth of -51 feet (-15.5 meters) MLLW
TERMINAL BERTHING:	Same
WHARF HEIGHT:	18.8 feet (5.7 meters)
CRANES:	4 Post-Panamax (4x18-wide reach), 4 Panamax (4x14-wide reach)
REEFER PLUGS:	875
TRUCK LANES:	14 lanes (8 in-gate, 6 out-gate)
TRUCK SCALES:	6
YARD OPERATION:	Wheeled import, wheeled/ground export, wheeled/ground empties
HANDLING EQUIPMENT:	4 top picks, 2 side picks
RAIL:	Near-dock (SIM Yard)
HIGHWAY ACCESS:	2.2 miles from I-5, SR-509 (N/S), I-90 (E/W) 30 Miles North via I-5 or SR-18
SUPPORT SERVICES:	Can work breakbulk, auto, and military vessels in addition to container vessels; full-service dock (bull rail w/power and water)
SECURITY:	Terminal area is lighted, fully secured and monitored 24/7
PRIMARY CLIENTS:	Matson



Tacoma Harbor

HUSKY TERMINAL



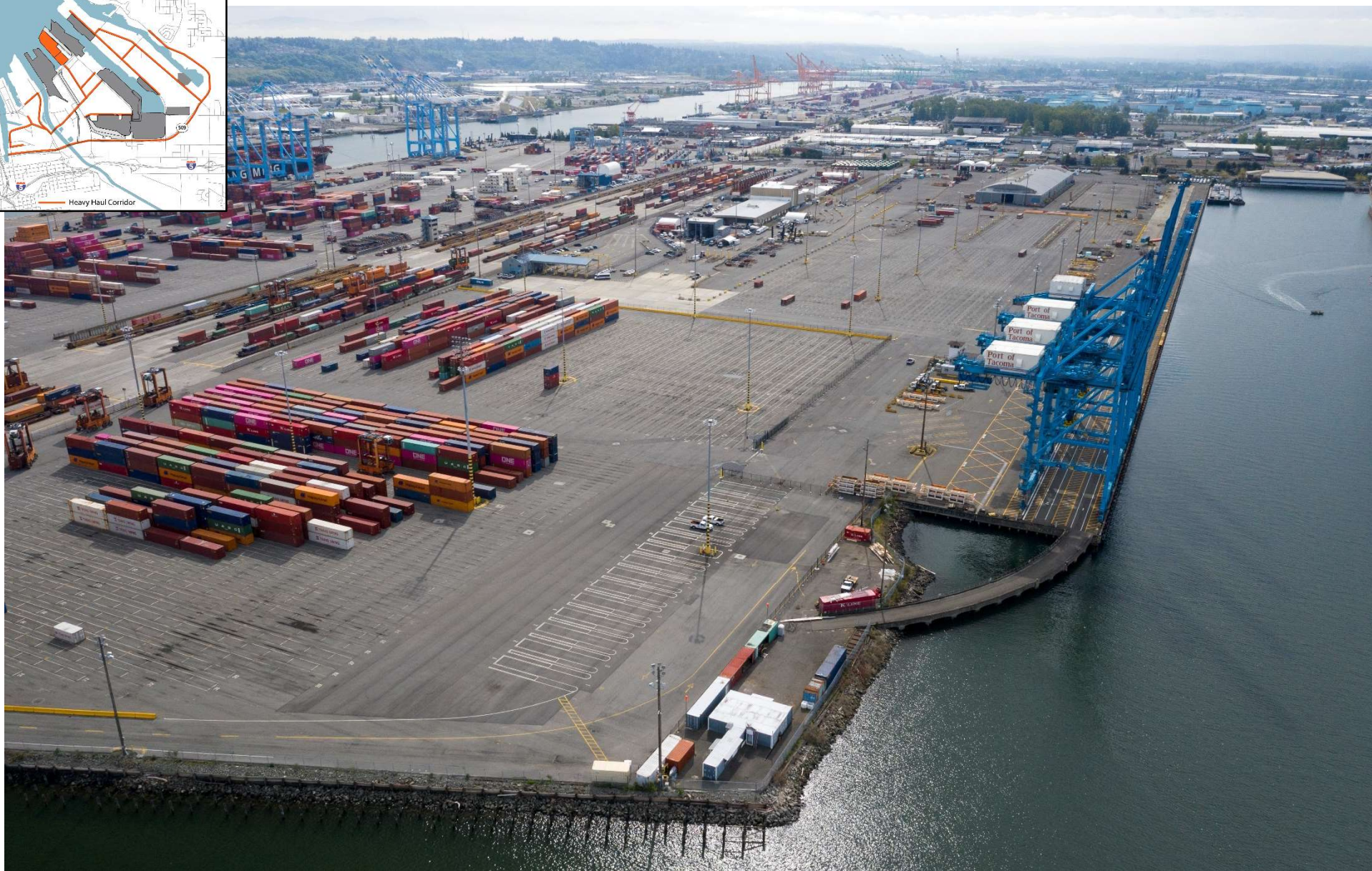
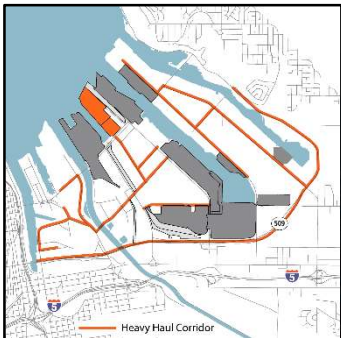


TACOMA HARBOR: HUSKY TERMINAL

1101 Port of Tacoma Rd., Terminal 4 • Tacoma, WA 98421

Contact: Customer Service | 888-354-3464 | CustomerSupport@huskyterminal.net

OPERATED BY:	Husky Terminal
WEBSITE:	www.huskyterminal.com
FIRMS CODE:	Z693
HOURS OF OPERATION:	Monday – Friday; Gate open 0800-1700 (closed 1200-1300 daily for lunch)
ACREAGE:	120+ acres (48 hectares)
VESSEL HANDLING CAPABILITY:	24,000 TEU vessels
CRANE RAIL BERTHING:	Approximately 2,960 lineal feet (902 meters) of contiguous berth space at a depth of -47 to -51 feet (-15.5 meters) MLLW
TERMINAL BERTHING:	Same
WHARF HEIGHT:	18 feet (5.5 meters)
CRANES:	8 cranes total (Super Post-Panamax 8x24 wide reach)
REEFER PLUGS:	590
TRUCK LANES:	11 in-gate lanes (9 in Lot F/2 Speed Gates on terminal), 4 out-gate lanes on terminal
TRUCK SCALES:	3 inbound Weigh-In-Motion scales: 3 inbound (Lot F) / 2 inbound (Speed Gate)
YARD OPERATION:	12 RTG (4 New 2022), 18 TP, 4 SP, 61 UTRS, 5 Speed Loaders
RAIL ACCESS:	On-dock (NIM Yard) with 22,793' track (Serves UP, BN, and NW Container Portland)
HIGHWAY ACCESS:	2.2 miles from I-5 via Port of Tacoma Road, I-90 (E/W) 30 Miles North via I-5 or SR-18
SUPPORT SERVICES:	Served by many transload and distribution centers (including cold storage)
SECURITY:	Terminal area is lighted, fully secured and monitored 24/7
PRIMARY CLIENTS:	Hapag-Lloyd, HMM, Ocean Network Express (ONE), Yang Ming Line, Maersk



Tacoma Harbor

EAST SITCUM
TERMINAL

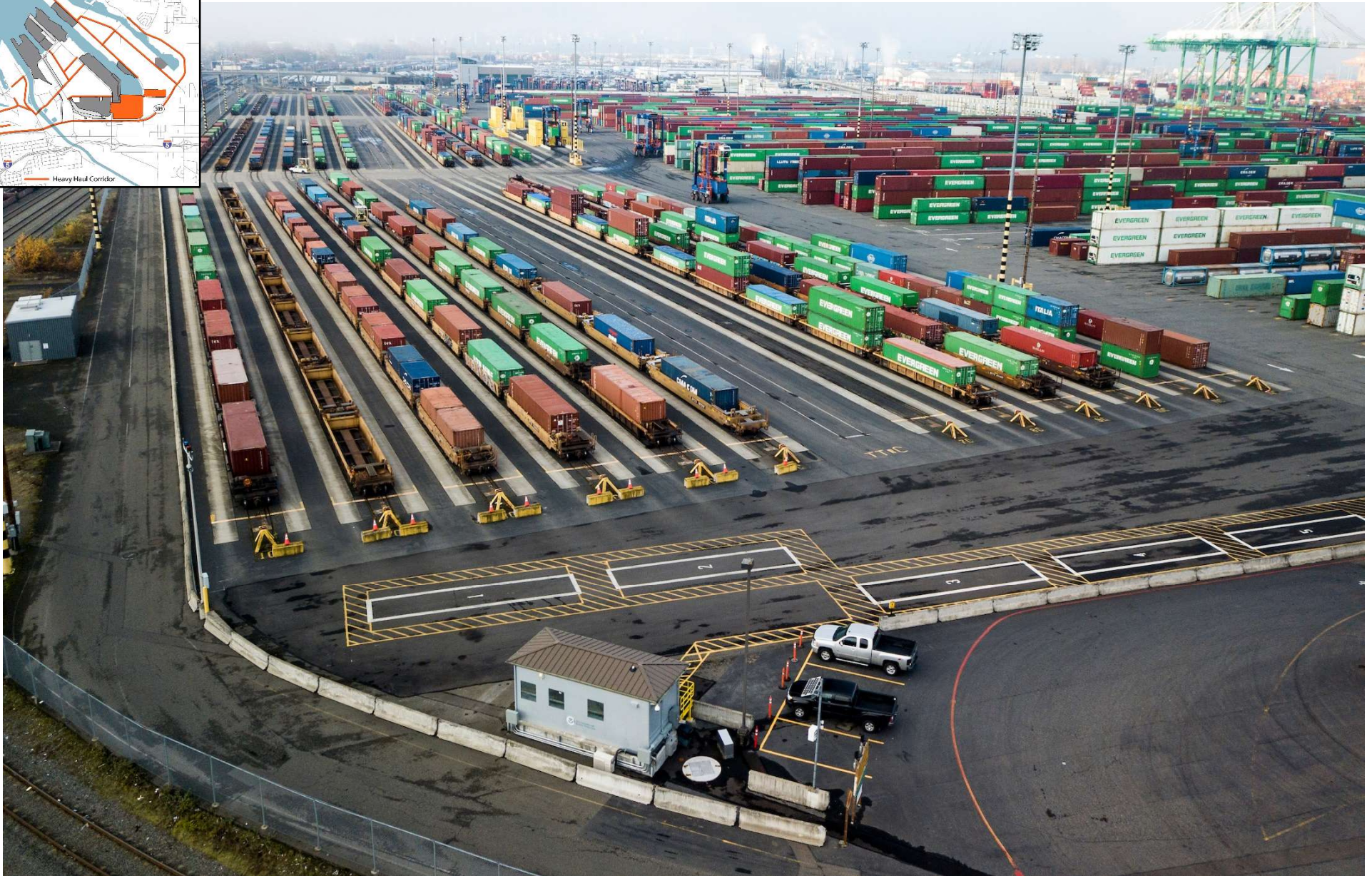
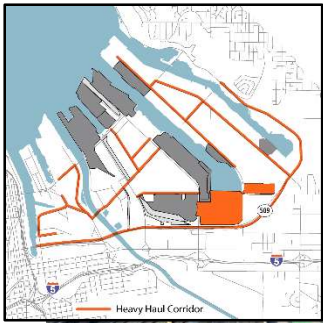




TACOMA HARBOR – EAST SITCUM TERMINAL

710 Port of Tacoma Rd. • Tacoma, WA 98421 • USA
Contact: Curt Stoner | 253-592-6768 | cstoner@nwseaportalliance.com

OPERATED BY:	Available for lease
WEBSITE:	
FIRMS CODE:	
HOURS OF OPERATION:	
ACREAGE:	36 acres (15 hectares)
VESSEL HANDLING CAPABILITY:	5,500 TEU vessel, 1x 5,500 TEU vessel
CRANE RAIL BERTHING:	Approx. 900 feet (274 meters) of contiguous berth at a depth of -51 feet (-15.5 meters) MLLW
TERMINAL BERTHING:	900 feet (274 m)
WHARF HEIGHT:	18 feet (5.5 meters)
CRANES:	3 Post-Panamax cranes (3x15 wide reach), 1 Panamax crane (1x14 wide reach)
REEFER PLUGS:	300
TRUCK LANES:	7 lanes (5 in-gate, 2 out-gate)
TRUCK SCALES:	2
YARD OPERATION:	Straddle Carriers for full cargo, top/side pick for empty block
HANDLING EQUIPMENT:	
RAIL ACCESS:	On-dock
HIGHWAY ACCESS:	2.5 miles from I-5 via Port of Tacoma Road, I-90 (E/W) 30 miles North via I-5 or SR-18
SUPPORT SERVICES:	50,000 square foot of warehouse for breakbulk. Served by many transload and distribution centers (including cold storage)
EFFICIENCIES:	
SECURITY:	Terminal area is lighted, fully secured and monitored 24/7
PRIMARY CLIENTS:	Alternative maritime use



Tacoma Harbor

PIERCE COUNTY
TERMINAL





TACOMA HARBOR – PIERCE COUNTY TERMINAL

4015 SR-509 N. Frontage Rd • Tacoma, WA 98421 • USA

Terminal Contact: Everport Terminal Services, Inc. | 385-777-5522 | customerservice@ebpiusa.com

Rail Contact: Steve Anderson | 253-287-4112 | sanderson@everport-terminals.com

OPERATED BY:	Everport Terminal Services, Inc.
WEBSITE:	www.etslink.com
FIRMS CODE:	X215
HOURS OF OPERATION:	Monday-Friday; Gates open 0700-1615
ACREAGE:	155 acres (76 hectares)
VESSEL HANDLING CAPABILITY:	14,000 TEU vessel, 1x14,000 TEU Vessel
CRANE RAIL BERTHING:	Same
TERMINAL BERTHING:	Approx. 2,087 feet (636 meters) of contiguous berth with a depth of -51 feet (15.5 meters) MLLW
WHARF HEIGHT:	21 feet (6.4 meters)
CRANES:	7 Post-Panamax (7x23-wide reach)
REEFER PLUGS:	654
TRUCK LANES:	16 lanes (10 in-gate, 6 out-gate)
TRUCK SCALES:	6
YARD OPERATION:	Wheeled/grounded import, grounded export, grounded empties
HANDLING EQUIPMENT:	Straddle Carriers, Side Pick, Top Pick, UTR
RAIL ACCESS:	On-Dock (PIM Yard); 23,544 feet of working track
HIGHWAY ACCESS:	2.5 miles from I-5 via Port of Tacoma Road, I-90 (E/W) 30 miles North via I-5 or SR-18
SUPPORT SERVICES:	EBPI Customer Service 385-777-5522
EFFICIENCIES:	Free Flow
SECURITY:	Terminal area is lighted, fully secured and monitored 24/7
PRIMARY CLIENTS:	CMA-CGM, COSCO SHIPPING Lines, Evergreen, OOCL



Tacoma Harbor

TOTE MARITIME
ALASKA TERMINAL





TACOMA HARBOR – TOTE MARITIME ALASKA TERMINAL

500 E. Alexander Ave • Tacoma, WA 98421 • USA
 Contact: Sam Rouse | 800-426-0074 SRouse@totemaritime.com

OPERATED BY:	TOTE Maritime Alaska
WEBSITE:	www.totemaritime.com
FIRMS CODE:	X339
HOURS OF OPERATION:	Monday-Friday; Gate open 0800-2300 Vehicle Dept. Mon / Tues / Thurs; 0800-1600 Wed / Fri: 0800-1500 (Deliveries); 0800-1600 (Pickup)
ACREAGE:	48 acres (19 hectares)
TERMINAL BERTHING:	2 dolphin piers (one operating, one layup) with a depth of -40 feet MLLW
WHARF HEIGHT:	17.5 feet (5.3 meters)
REEFER PLUGS:	140
TRUCK LANES:	5 inbound, 2 outbound
TRUCK SCALES:	4
YARD OPERATION:	Wheeled
HANDLING EQUIPMENT:	3 ramps used to move trailers and chassis between terminal and vessel, 1 top pick, 32 utility tractor rigs
RAIL ACCESS:	Off-dock
HIGHWAY ACCESS:	3.5 miles from I-5 via Port of Tacoma Road, I-90 (E/W) 30 miles North via I-5 or SR-18
SUPPORT SERVICES:	Reefer washing, steam cleaning, maintenance, and repair. Served by many transload and distribution centers (including cold storage).
EFFICIENCIES:	Gate turn time 20 min
SECURITY:	Terminal area is lighted, fully secured and monitored 24/7
PRIMARY CLIENTS:	TOTE Maritime Alaska



Tacoma Harbor

WASHINGTON
UNITED TERMINALS





TACOMA HARBOR – WASHINGTON UNITED TERMINALS

1815 Port of Tacoma Rd. • Tacoma, WA 98421 • USA

Contact: Washington United Terminals | 253-396-4914 | 253-396-4915 | 253-396-4917 | clientsupport@uswut.com

OPERATED BY:	Washington United Terminals
WEBSITE:	www.uswut.com
FIRMS CODE:	Z705
HOURS OF OPERATION:	Monday-Friday; Gate open 0800-1630
ACREAGE:	133 acres (53.8 hectares)
VESSEL HANDLING CAPABILITY:	Up to 18,000 TEU vessel
CRANE RAIL BERTHING:	Approx. 2,600 feet (792 meters) of contiguous berth at a depth of -51 feet (-15.5 meters) MLLW
TERMINAL BERTHING:	Same
WHARF HEIGHT:	21.5 feet (6.6 meters)
CRANES:	2 Super Post-Panamax (2 x 24 wide reach), 4 Post-Panamax (4 x 18 wide reach)
REEFER PLUGS:	884
TRUCK LANES:	13 (9 in-gate, 4 out-gate), 2 reversible
TRUCK SCALES:	7
YARD OPERATION:	Mixed ground and wheeled
HANDLING EQUIPMENT:	Modern fleet of container handling equipment (reach-stackers, top picks, side picks, rubber-tired gantry cranes)
RAIL ACCESS:	On-dock, Hyundai Intermodal Yard
HIGHWAY ACCESS:	Interstate 5 is 1.3 miles away
SUPPORT SERVICES:	Served by many transload and distribution centers (including cold storage)
EFFICIENCIES:	Automated in/out gate processing, Optical Character Recognition (OCR) Technology
SECURITY:	CTPAT facility; Terminal area is lighted, fully secured and monitored 24/7
PRIMARY CLIENTS:	HMM, Ocean Network Express (ONE), Hapag-Lloyd, Yang Ming Line



Tacoma Harbor

WEST HYLEBOS
TERMINAL

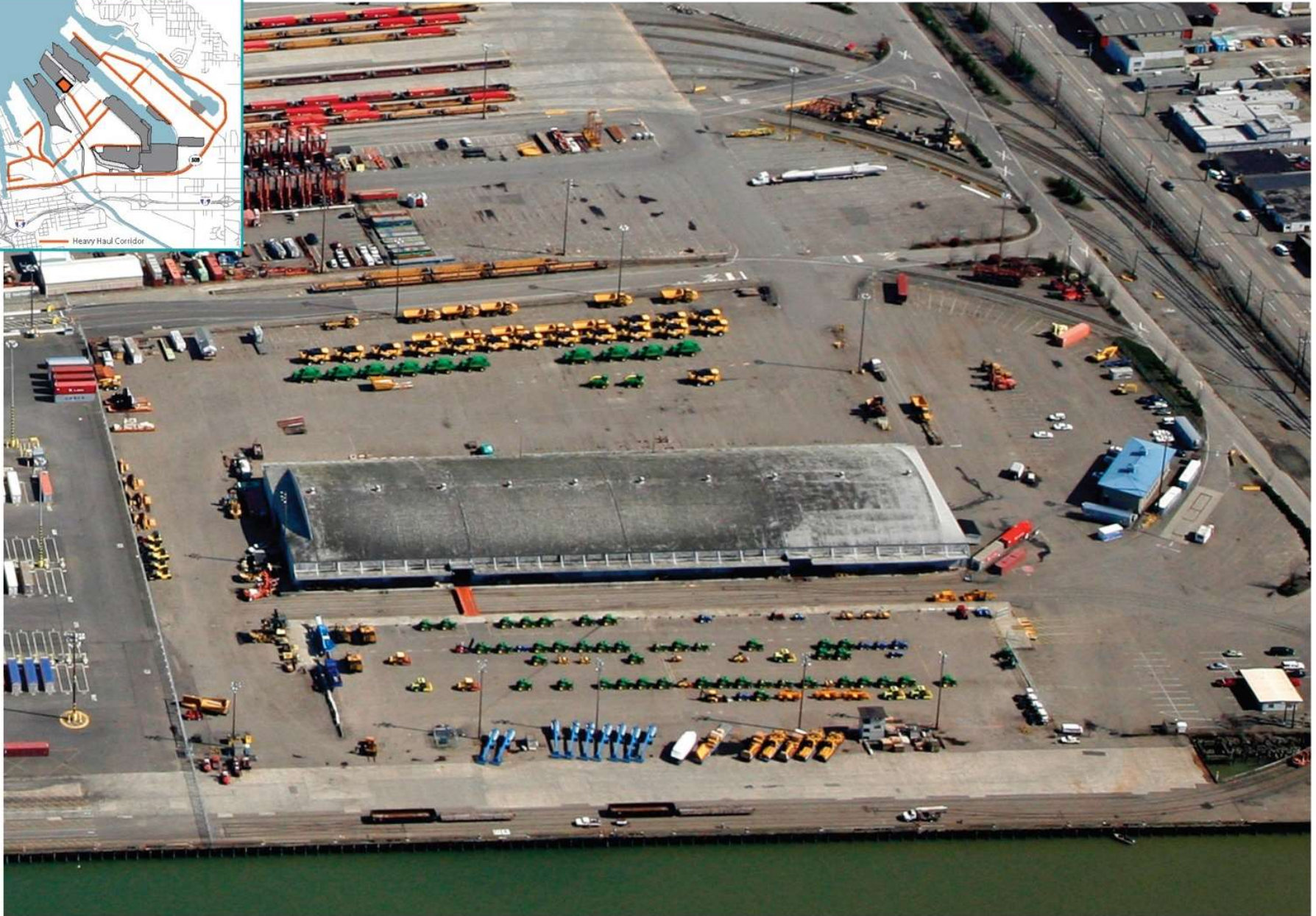




TACOMA HARBOR – WEST HYLEBOS TERMINAL

3401 Taylor Way • Tacoma, WA 98421 • USA
Contact: Curt Stoner | 253-592-6768 | cstoner@nwseaportalliance.com

OPERATED BY:	Pacific Crane Maintenance Company LLC
WEBSITE:	www.pcmcus.com
FIRMS CODE:	n/a
HOURS OF OPERATION:	Monday-Friday; Gates open 0700-1620
ACREAGE:	23 acres (9.3 hectares)
TERMINAL BERTHING:	1,030 lineal feet (313.9 meters) with a water depth of -32 feet (-9.75 meters) MLLW
WHARF HEIGHT:	18 feet (5.5 meters)
PIER LOAD CAPACITY:	600 PSF
CARGO HANDLED:	Breakbulk, Bulk
TRUCK LANES:	2 gated entry/exit points to the site
RAIL ACCESS:	Off-dock, Rail access along the front of property outside the fence line
HIGHWAY ACCESS:	2 miles from I-5, SR-509 (N/S); 1-90 (E/W) 30 miles North via 1-5 or SR-18
OTHER FEATURES:	Paved yard with asphalt surface designed to support maritime/cargo handling loads; utilities scaled for maritime & heavy industrial use; award-winning stormwater treatment system; includes office, repair shop with an oil/water separator and other outbuildings.
SECURITY:	Terminal area is lighted, fenced
PRIMARY CLIENTS:	Alternative Maritime Use, privately-operated



Tacoma Harbor

TERMINAL 7





TACOMA HARBOR – TERMINAL 7 (T-7)

2209 E. 11th Street • Tacoma, WA 98421 • USA

Contact: Andre Elmaleh | 253-592-6792 | aelmaleh@nwseaportalliance.com

OPERATED BY:	The Northwest Seaport Alliance
WEBSITE:	www.nwseaportalliance.com
FIRMS CODE:	X216
HOURS OF OPERATION:	Monday – Friday: Gate Open 0800-1700
ACREAGE:	14 acres
TERMINAL BERTHING:	Approximately 2,700 lineal ft (822 m) of contiguous berth at a depth of -51 ft (-15.5 m) MLLW
WHARF HEIGHT:	18 feet (5.5 meters)
CARGO:	Breakbulk and Autos
RAIL ACCESS:	On-dock, North Intermodal Yard (NIM) (2 rail spurs alongside the terminal area for unloading direct to boxcar)
HIGHWAY ACCESS:	3 miles from I-5 via Port of Tacoma Road, I-90 (E/W), 30 miles north via I-5 or SR-18
SECURITY:	Terminal area is lighted, fully secured and monitored 24/7
PRIMARY CLIENTS:	Hyundai-GLOVIS, "K" Line Ro/Ro, MOL Ro/Ro, NYK Ro/Ro, Wallenius Wilhelmsen Logistics (WWL), other carriers on inducement