

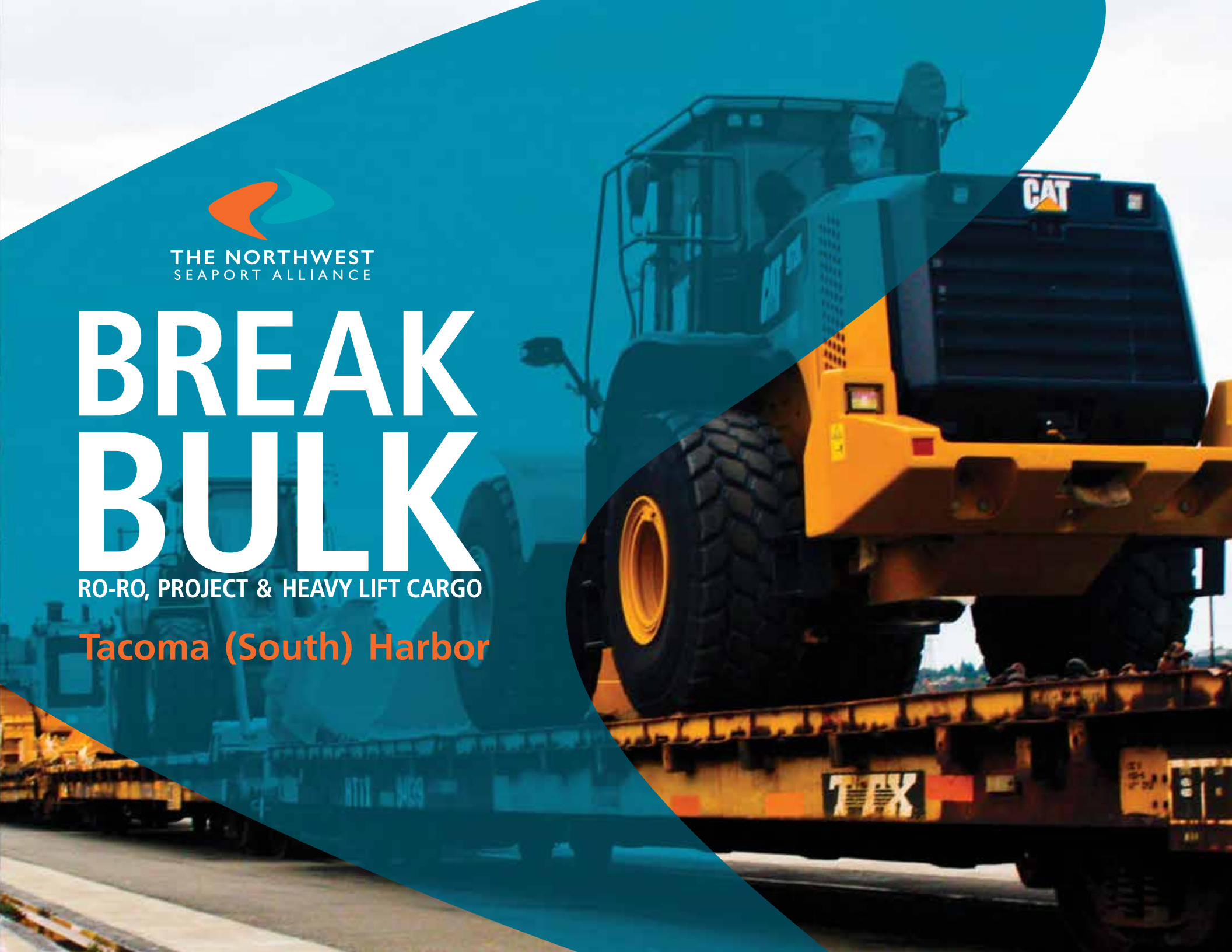


THE NORTHWEST  
SEAPORT ALLIANCE

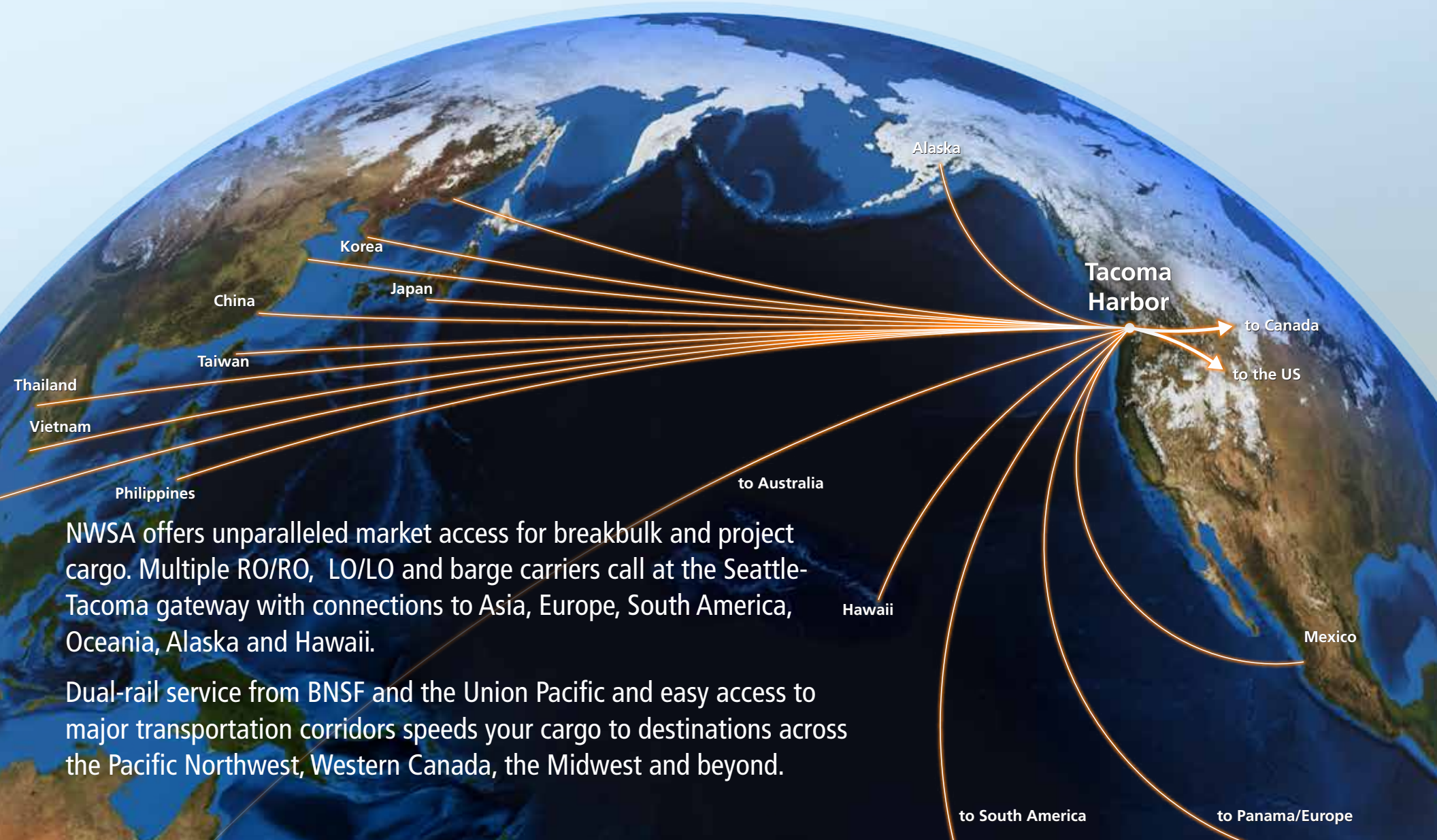
# BREAK BULK

RO-RO, PROJECT & HEAVY LIFT CARGO

Tacoma (South) Harbor



# Tacoma: Your PNW Center for Breakbulk Shipping



NWSA offers unparalleled market access for breakbulk and project cargo. Multiple RO/RO, LO/LO and barge carriers call at the Seattle-Tacoma gateway with connections to Asia, Europe, South America, Oceania, Alaska and Hawaii.

Dual-rail service from BNSF and the Union Pacific and easy access to major transportation corridors speeds your cargo to destinations across the Pacific Northwest, Western Canada, the Midwest and beyond.



**MULTI-YEAR  
AWARD WINNER**

The Northwest Seaport Alliance (NWSA) is the marine cargo operating partnership of the ports of Seattle and Tacoma. We offer extensive support for breakbulk cargo, including two harbors, multiple terminals, and a robust network of local service providers with specialized equipment and know-how required for complex breakbulk shipments.

Our dedicated and experienced longshore labor force is committed to the safe and efficient handling of your cargo and an unparalleled customer experience.

Connection to interstate  
highway system

Connection  
to rail network



### East Blair 1 (EB-1)



Terminal area	26 acres (10 ha)
Berthing	1,200 ft (366 m)
Berth depth	-51ft MLLW (-15.5 m)
Wharf height	21.5ft (6.5 m)
Pier load capacity	2,000 PSF heavy-lift pad
Rail service	On-dock
Storage	Uncovered, On-dock

### Terminal 7



Terminal area	14 acres (5.7 ha)
Berthing	2,700 ft (822 m)
Berth depth	-51ft MLLW (-15.5 m)
Wharf height	18 ft (5.5 m)
Pier load capacity	1,000 PSF
Rail-service	Near-dock
Storage	Uncovered, on-dock 100,000 ft <sup>2</sup> warehouse

### DISTANCES TO KEY DESTINATIONS

Vancouver, BC via I-5 . . . . 173 miles  
Spokane, WA via I-5/I-90 . . 291 miles

Vancouver, WA via I-5 . . . . 137 miles  
Calgary, AB via I-5 . . . . . 704 miles

# Capacity. Connections. Capability.

## World-class Facility

EB-1, our premier breakbulk terminal, features on-dock rail, a 2,000 PSF heavy left pad, on-dock storage and heavy lift equipment.

## Fluid Vessel Operations

Two terminals, multiple berths, with on-dock storage at both locations ensures fast and efficient cargo handling and unloading

## Frequent Vessel Service

Vessel service from major RO/RO, LO/LO, and domestic barge carriers on a scheduled or inducement basis

## Rail and Road Connections

Dual-service from BNSF and Union Pacific railroads, on-dock rail, with easy access to Interstate 5 for over-the-road shipments

## Dedicated Heavy Haul Corridor

For fast and efficient over-the-road transportation of overweight/oversized loads between breakbulk terminals, processing facilities, and road connections

## Cost Competitive

Reduce, defer, or eliminate customs duties in our Foreign Trade Zone. Our detention and demurrage terms are some of the most generous on the West Coast.

## A Team You Can Count On

An NWSA team dedicated to delivering exceptional customer service and innovative, cost-effective solutions

## Robust Service Provider Network

Multiple stevedores and a large local network of service providers equipped for specialized handling of over-dimensional cargo

## Skilled Labor Force

Highly skilled and experienced longshore labor committed to the safe and efficient handling of your cargo

**Rolling Stock**



**Energy**



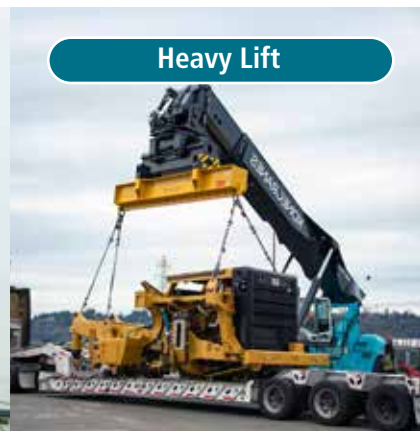
**Helicopters**



**Project Cargo**



**Heavy Lift**





## THE NORTHWEST SEAPORT ALLIANCE

The Northwest Seaport Alliance is the marine cargo partnership of the ports of Seattle and Tacoma.

CONTACT:

**Andre Elmaleh**

Sr. Business Development Mgr.

Non-container

Phone: 253-592-6792

Email: [aelmaleh@nwseaportalliance.com](mailto:aelmaleh@nwseaportalliance.com)

For quote requests, e-mail:

[breakbulkquotes@nwseaportalliance.com](mailto:breakbulkquotes@nwseaportalliance.com)



For more information about our breakbulk services, visit  
<https://think.nwseaportalliance.com/breakbulk>



Updated March 2025