

FINISHED VEHICLE AND AUTO PART LOGISTICS

The Northwest Seaport Alliance Has What it Takes
to Handle Your Supply Chain Needs



Marshall Avenue Auto Facility



Taylor Way Auto Facility

Finished vehicles or a hot box of auto parts, we have the facilities, connections, and experience to ensure safe, reliable and efficient movement of your cargo through the port and on to its destination.

Facilities to Suit Your Changing Needs

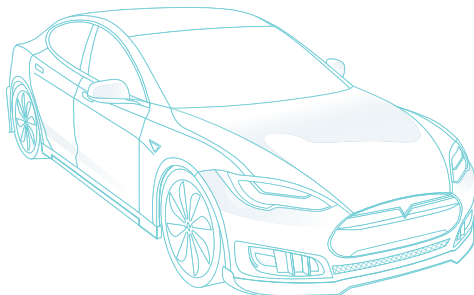
Choose from two state-of-the-art, full-service auto processing facilities, both dual rail served. Multiple piers are available for vehicle offloading, minimizing berthing conflicts, and first point-of-rest yards are located nearby.

Ready to Grow Your Business

Over 250 dedicated acres for vehicle processing activities, with expansion opportunities. Auto shipments are handled at three port-operated berths, with additional berth space available.

Better Connected, Better Served

We offer multiple Ro/Ro and liner connections with major ports in the key global auto markets. Our facilities are located on the rail mainline, and within a short distance of interstate highways for over-the-road shipments.



Your Cargo is in Good Hands

The NWSA has served the North American auto import market since 1970, with over 6.2 million vehicles processed in Tacoma alone. We handle several major brands: GM, Hyundai, Isuzu, Kia, Mazda, Mitsubishi, Nissan, and Volvo.

Better for Your Bottom Line

Storage yards can be activated as Foreign Trade Zones, offering potential savings and operational advantages for imports and re-export of auto parts and vehicles.

VESSEL & BARGE CONNECTIONS

Asia • S America • Europe • Alaska
Hawaii • Oceania

RAIL & TRUCK SERVICE

to Pacific NW • Midwest
Southeastern US • South Central
US • Canada

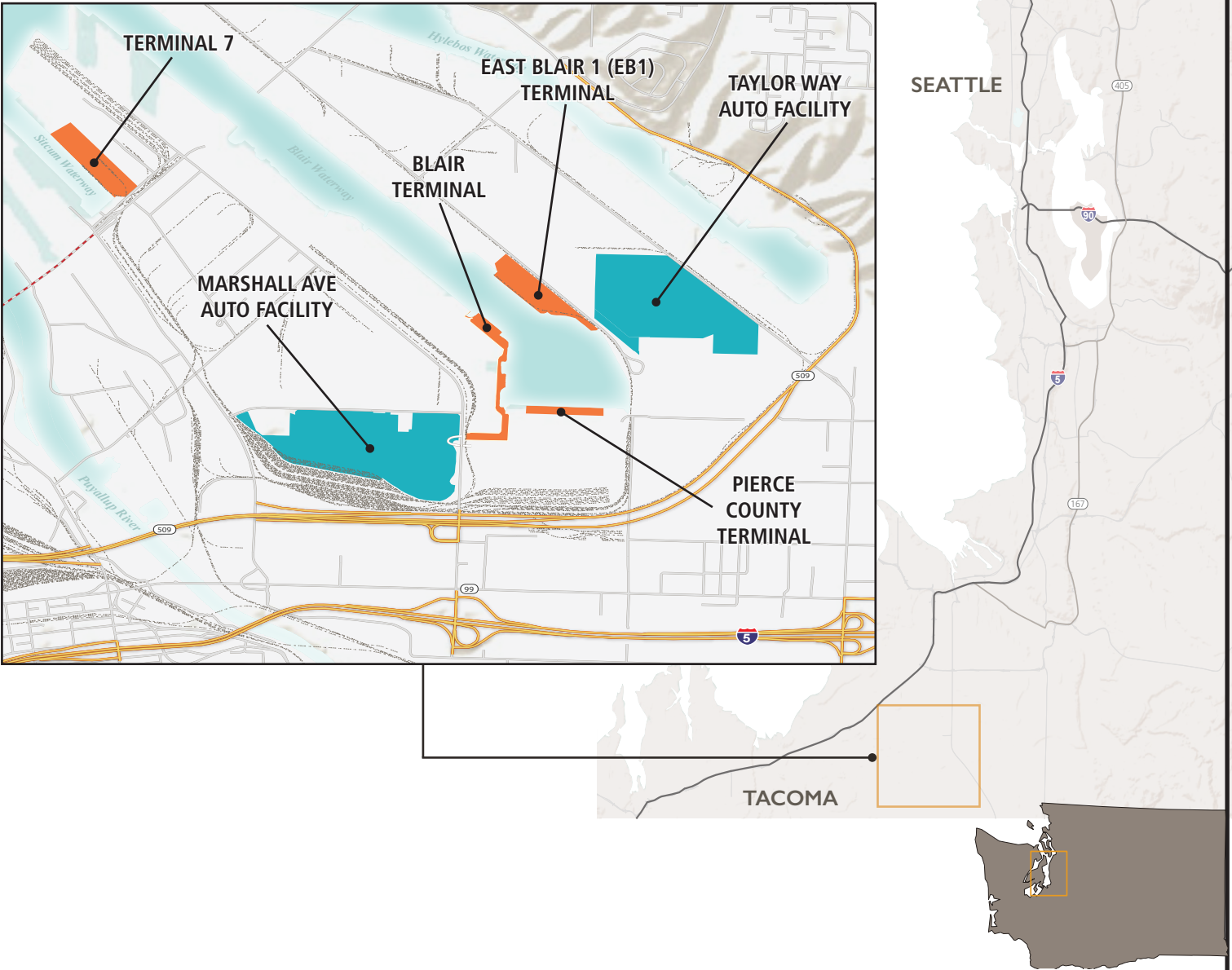
To Asia

BNSF
Union
Pacific

RO/RO OCEAN CARRIERS

WWL/Eukor
MOL • "K" Line • NYK
Hyundai-Glovis

FINISHED VEHICLE PROCESSORS AND SUPPORT PIERS



TERMINAL	BERTHS	DEPTH	ACCESS	CARGO
TERMINAL 7	3 1800 ft/549 m	51ft 15.5 m	Marshall Ave	Autos / Ro-Ro
EAST BLAIR ONE	1 1200 ft/366 m	51ft 15.5 m	Taylor Way	Autos / Ro-Ro
BLAIR	1 600 ft/183 m	51ft 15.5 m	Marshall Ave	Autos / Ro-Ro
PIERCE COUNTY TERMINAL	1 2087 ft/636 m	51ft 15.5 m	Taylor Way	Autos

www.nwseaportalliance.com



Andre Elmaleh
253.592.6792
aemaleh@nwseaportalliance.com

Tong Zhu
253.428.8642
tzhu@nwseaportalliance.com

The Northwest Seaport Alliance is a marine cargo partnership of the ports of Seattle and Tacoma.
World class facilities in both harbors dedicated to breakbulk, project and RoRo cargo.

Updated 10/13/22