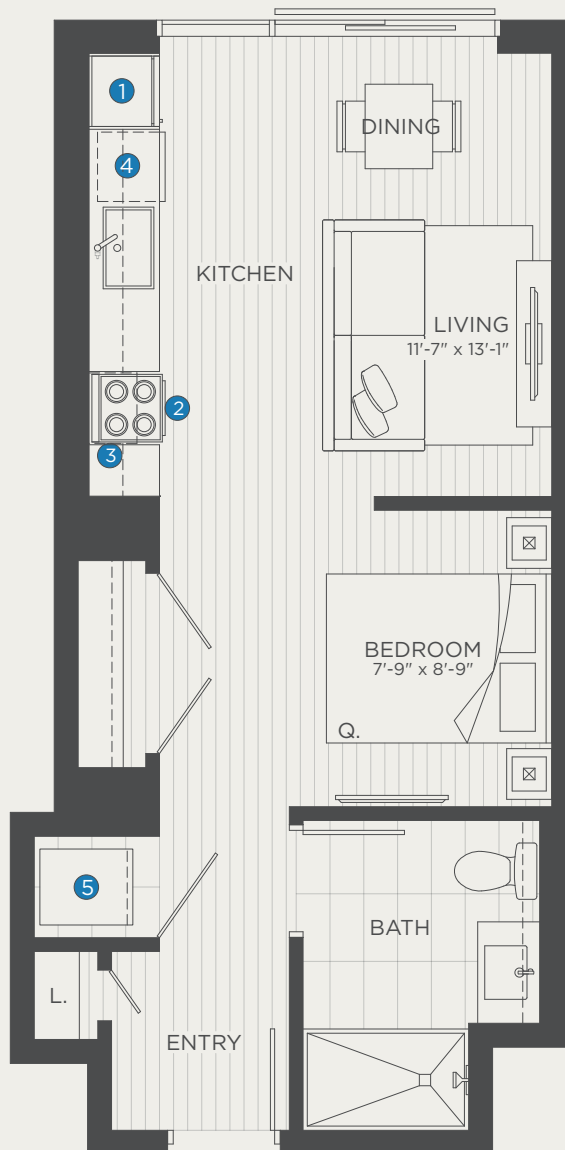


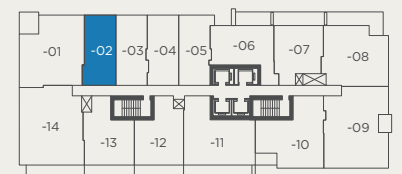
Convertible

OLD TOWN
PARK**TOTAL AREA 505** SQ FT505 SQ FT
INDOOR AREA- SQ FT
OUTDOOR AREA

List Of Appliances:

1. 24" Whirlpool Fridge
2. 24" Haier Combo Microhood
3. 24" Summit Range
4. 24" Whirlpool Dishwasher
5. Whirlpool Washer and Dryer

*Unit 1702 includes Gas Cooktop



10th, 12th, 14th, 17th, 18th, 20th Floor