

## 2 Bedroom

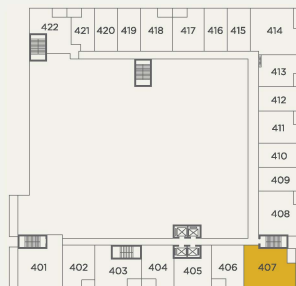
OLD TOWN  
PARK

Living 1,100-1,105 Sqft

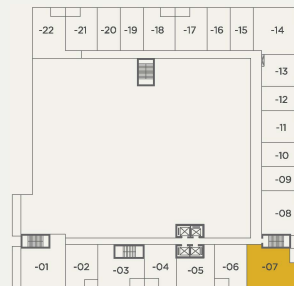
- |                                  |                               |
|----------------------------------|-------------------------------|
| 1 30" Blomberg Refrigerator      | 5 24" Blomberg Dishwasher     |
| 2 30" Fulgor-Milano Gas Cook Top | 6 24" Panasonic Microwave     |
| 3 30" Faber Hood                 | 7 GE Full Size Washer & Dryer |
| 4 30" Fulgor-Milano Oven         |                               |



LEVEL 2-3



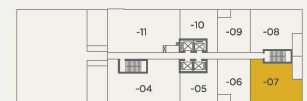
LEVEL 4



LEVEL 5-7



LEVEL 9-26



LEVEL 27-30