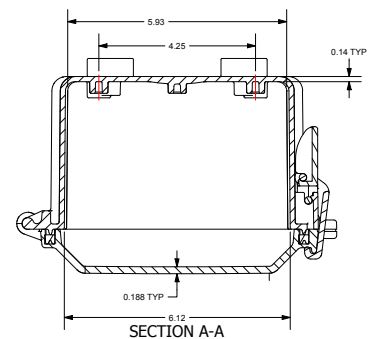
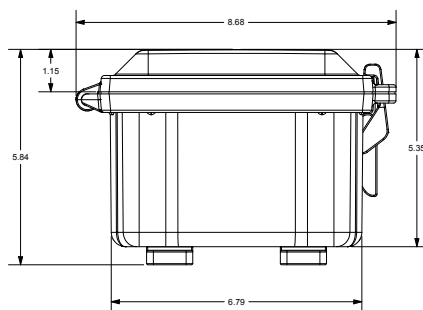
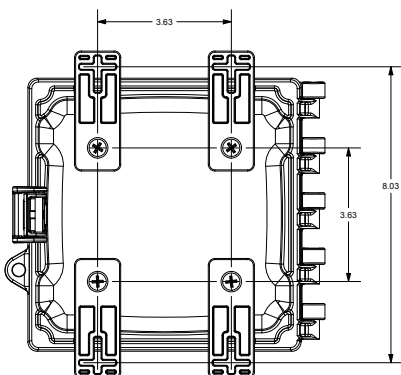
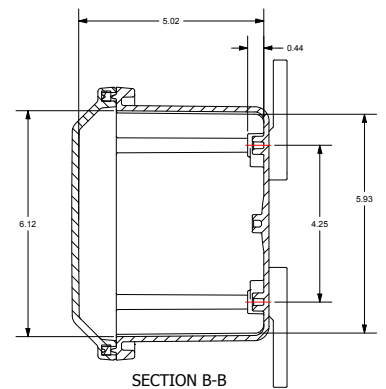
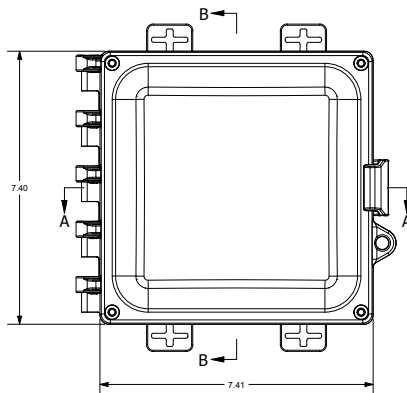
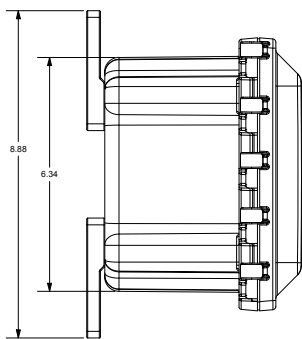
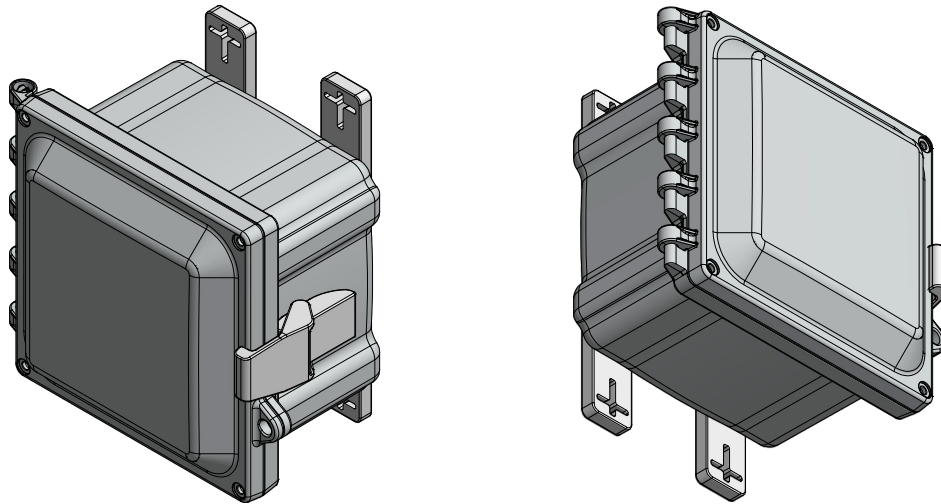


OptConnect Dura Enclosure

6 x 6 x 4 Inches Polycarbonate Enclosure



Dura Enclosure Specifications

Electrical Specifications	
Material (box & cover)	Polycarbonate with UV inhibitors
Cover Screw Size	#10-32 x 5/8
Cover Screw Material	304 Stainless Steel
Back Panel Screw Size	#10-32x3/8
Gasket Material	Neoprene rope style
Hinge and Latch Hardware	Polycarbonate with UV inhibitors
Metal Inserts	All threaded brass inserts accepting #10-32 screws
Mounting Bosses	Panel mounting capability for fixed rear panel
Mounting Feet Inserts	1/4-20x1/2
Mounting Feet Torque	14-16in.-lbs
Industry Standards	
Flammability Rating	UL94-5VA
UL/cUL File #	E319779
Impact Rating (IK10)	No
CSA Std. C22.2 File #	No
IEC 60529 Ratings	IP66
NFPA No. 101 Flame Spread	N/A
Outdoor UV Exposure (UL 746C)	(f1) Rated
Plenum Space Rating (UL 2043)	No
UL 1741 File #	No



Need more information?

Call our connectivity experts at 1-877-678-3343