

FOR LEASE

Owned and managed by the Port, the Fabulich Center is located just minutes from downtown Tacoma, Fife and Port of Tacoma terminals via I-5 and SR- 509.



Building Features

- > Class "B" office finishes
- > Views of Mt. Rainer and the Port
- > Ample Parking
- > High-speed internet connectivity

Building Specifications

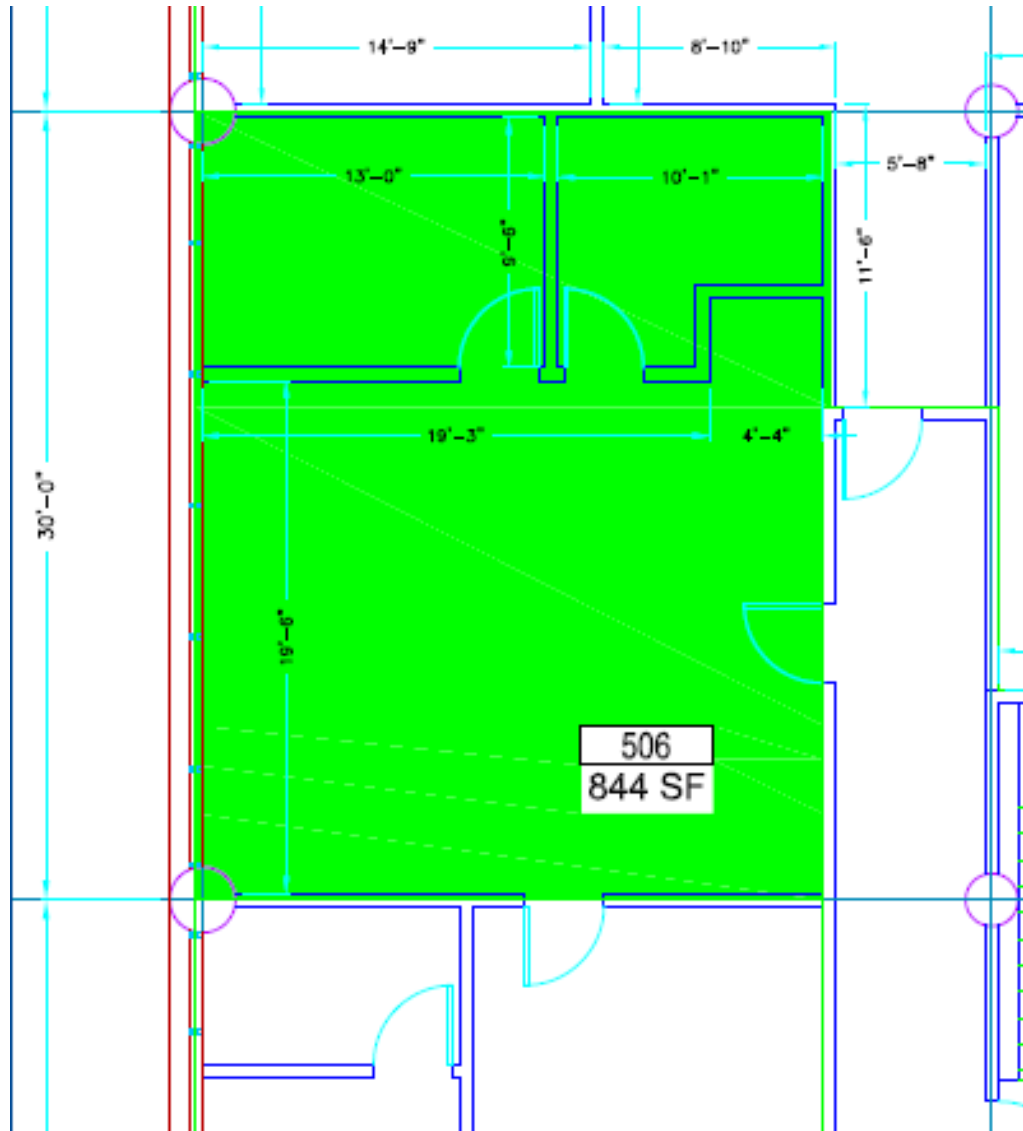
- > **Structural:** Poured concrete frame and core minimizes interior columns and maximizes space
- > **Floor areas:** Five floors, 72,000 gross square feet, 12,900 usable square feet per floor
- > **Entry plaza:** Spacious pedestrian plaza leads from the parking areas to the building, and features colorful yearround landscaping
- > **Lobby:** The atrium lobby is a comfortable waiting area filled with light
- > **Access:** Located one block north of Pacific Hwy 99 and I-5's Port of Tacoma Road Exit; Immediately South of SR-509
- > **Elevators:** Two elevators provide service to all floors
- > **Parking:** Convenient tenant and visitor parking surrounds the building on all sides with three building entry points for tenants
- > **Rate:** \$1,800/month; Available Now

Contact

Shannon Bartlett
253-888-4720
sbartlett@portoftacoma.com

FOR LEASE

Suite 506



Contact:

Shannon Bartlett

253-888-4720

sbartlett@portoftacoma.com