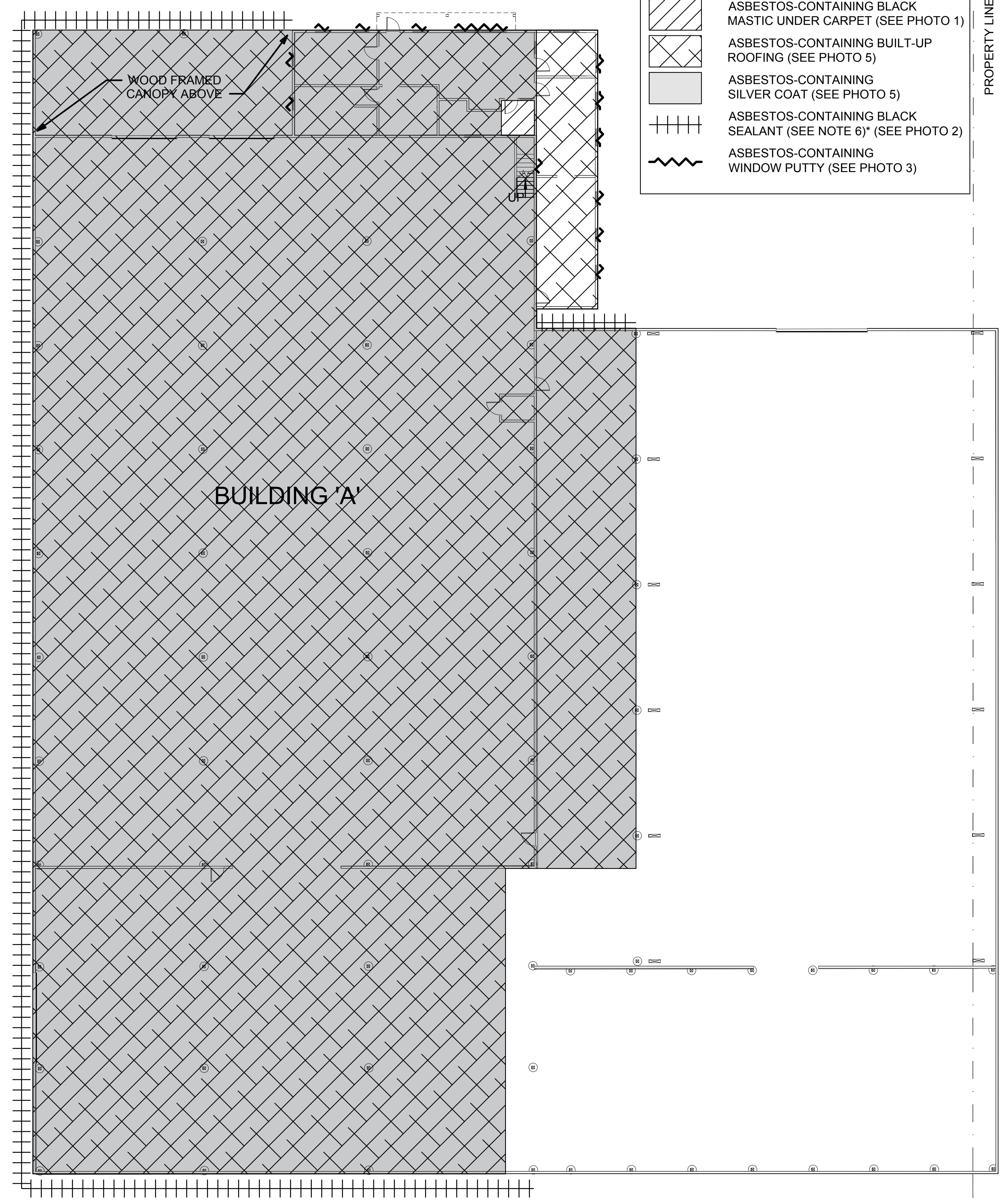





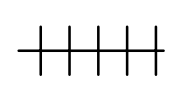

BINDING EDGE

PROPERTY LINE

PROPERTY LINE



LEGEND

-  ASBESTOS-CONTAINING BLACK MASTIC UNDER CARPET (SEE PHOTO 1)
-  ASBESTOS-CONTAINING BUILT-UP ROOFING (SEE PHOTO 5)
-  ASBESTOS-CONTAINING SILVER COAT (SEE PHOTO 5)
-  ASBESTOS-CONTAINING BLACK SEALANT (SEE NOTE 6)* (SEE PHOTO 2)
-  ASBESTOS-CONTAINING WINDOW PUTTY (SEE PHOTO 3)

GENERAL NOTES

- CONTRACTOR TO VERIFY ALL ITEMS SHOWN, LOCATIONS AND QUANTITIES OF ASBESTOS-CONTAINING MATERIALS (ACMS), AND DIMENSIONS PRIOR TO REMOVAL. ANY DEVIATIONS FROM THE SPECIFICATION THAT ARE DISCOVERED BY THE CONTRACTOR SHALL BE REPORTED TO THE OWNER'S REPRESENTATIVE PRIOR TO REMOVAL. THE DRAWINGS ARE FOR DIAGRAMMATIC PURPOSES ONLY. GENERAL LOCATIONS OF SOME HAZARDOUS MATERIALS ARE DEPICTED DIAGRAMMATICALLY ON THE DRAWINGS. THE REMAINING MATERIAL LOCATIONS ARE DESCRIBED TEXTUALLY ON THESE DRAWINGS. QUANTITIES OF HAZARDOUS MATERIALS LISTED ON THIS SHEET ARE CONSIDERED ACCURATE TO WITHIN +/- 10%. THE CONTRACTOR SHALL PROVIDE ALL LABOR, MATERIALS, EQUIPMENT AND PERMITS FOR THE REMOVAL AND DISPOSAL OF THE QUANTITIES OF HAZARDOUS MATERIALS PROVIDED PLUS AN ADDITIONAL 10%. THE CONTRACTOR WILL BE COMPENSATED FOR QUANTITIES WHICH ARE GREATER THAN 110% OF THE TOTAL AND THE OWNER WILL DEDUCT FROM THE CONTRACT SUM QUANTITIES THAT ARE 90% OR LESS OF THE TOTAL.
- REMOVAL OF HAZARDOUS MATERIALS MAY COMPROMISE THE SECURITY OF THE SITE. THE CONTRACTOR IS FULLY RESPONSIBLE FOR MAINTAINING SITE SECURITY AND PUBLIC SAFETY THROUGHOUT THE PROJECT. SEE SPECIFICATIONS REGARDING SECURITY AND PUBLIC SAFETY.
- ABATEMENT CONTRACTOR TO COORDINATE ALL ACTIVITIES WITH PRIME CONTRACTOR INCLUDING, BUT NOT LIMITED TO SCHEDULE, ACCESS, ELECTRICAL/UTILITY SHUTDOWNS AND DEMOLITION. PERFORM SELECTIVE DEMOLITION AS NECESSARY TO ACCESS CONCEALED HAZARDOUS AND/OR ASBESTOS-CONTAINING MATERIALS TO BE REMOVED. ABATEMENT CONTRACTOR TO REPORT LOCATIONS AND QUANTITIES OF ALL HAZARDOUS MATERIALS TO BE DEMOLISHED TO THE OWNER'S REPRESENTATIVE PRIOR TO ABATEMENT/DEMOLITION.

ASBESTOS-CONTAINING MATERIALS NOTES

- THE CONTRACTOR SHALL PROVIDE ALL LABOR, MATERIALS, EQUIPMENT AND PERMITS FOR IMPACTING AND REMOVING ACMS AS DESCRIBED IN SPECIFICATION SECTION 02 82 00 AND ALL APPLICABLE REGULATIONS AS NECESSARY TO ACCOMPLISH THE SCOPE OF WORK.
- REMOVE APPROXIMATELY 50 LF PIPE INSULATION ASSUMED TO BE ASBESTOS-CONTAINING CONCEALED IN WALLS AND CEILING CAVITIES.
- REMOVE APPROXIMATELY 138 LF WINDOW PUTTY ON WINDOWS OF OFFICES, LOADING DOCK, AND KITCHEN SEE LEGEND.
- REMOVE APPROXIMATELY 38,208 SF SILVER COAT AND BUILT-UP ROOFING ON WOOD OVER THE WAREHOUSE. SEE LEGEND.
- REMOVE APPROXIMATELY 1,170 BUILT-UP ROOFING OVER ON THE LOWER ROOF OVER THE OFFICES. SEE LEGEND.
- REMOVE APPROXIMATELY 65 LF OF SEALANT ON THE METAL PARAPET CAP. SEE LEGEND. * MATERIAL EXISTS INTERMITTENTLY*
- REMOVE APPROXIMATELY 154 SF OF BLACK MASTIC UNDER CARPET ON WOOD IN THE KITCHEN. SEE LEGEND.
- REMOVE 20 PIPE GASKETS.

LEAD-RELATED ACTIVITIES

- PERFORM ALL WORK IMPACTING PAINTED SURFACES IN ACCORDANCE WITH SPECIFICATION SECTION 02 83 00.

PCB-CONTAINING EQUIPMENT

- ALL FLUORESCENT LIGHT FIXTURE BALLASTS THAT DO NOT DISPLAY A "NO PCBs" LABEL ARE CONSIDERED PCB-CONTAINING. REMOVE, HANDLE AND DISPOSE OF FLUORESCENT LIGHT FIXTURE BALLASTS THROUGHOUT ALL BUILDING AREAS AS PCB-CONTAINING IN ACCORDANCE WITH SPECIFICATION SECTION 02 85 00. REMOVE APPROXIMATELY 170 BALLASTS.

MERCURY-CONTAINING LAMPS

- ALL FLUORESCENT LIGHT TUBES ARE CONSIDERED MERCURY-CONTAINING. REMOVE, HANDLE AND RECYCLE UP TO 380 FLUORESCENT LAMPS AND 75 HID LIGHTS THROUGHOUT ALL BUILDING AREAS IN ACCORDANCE WITH SPECIFICATION SECTION 02 84 00.

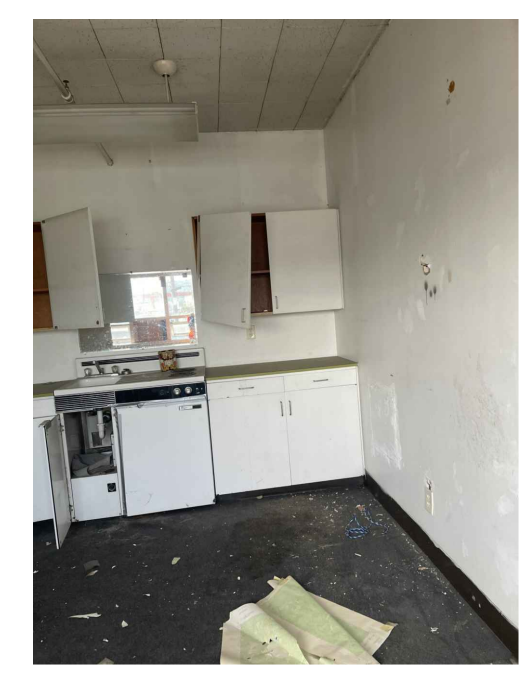


PHOTO 1

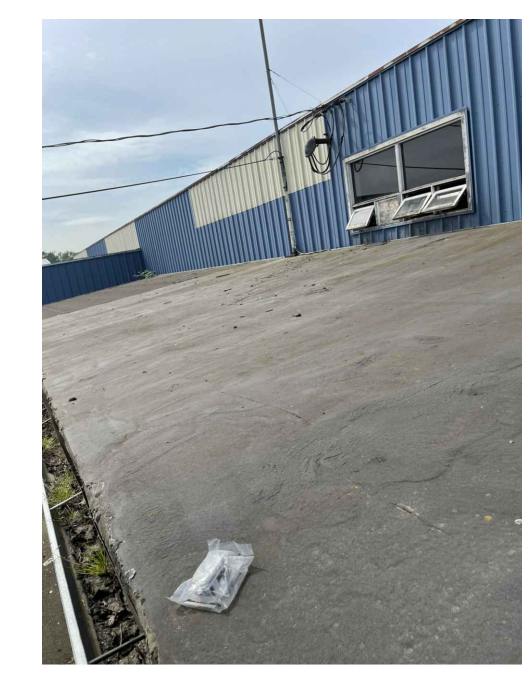


PHOTO 2



PHOTO 3

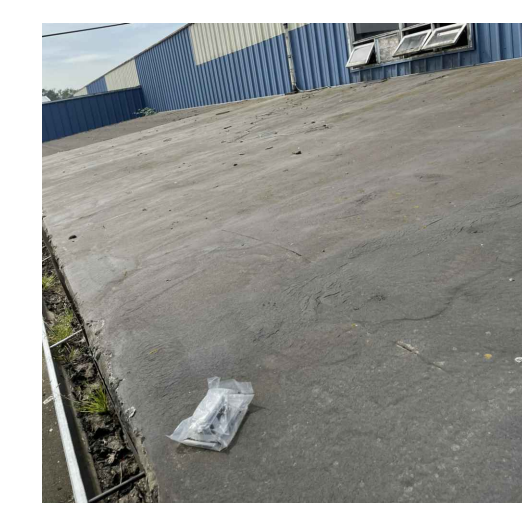
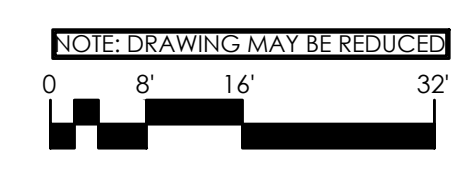


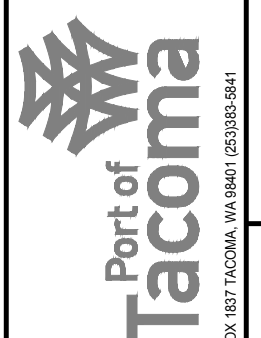
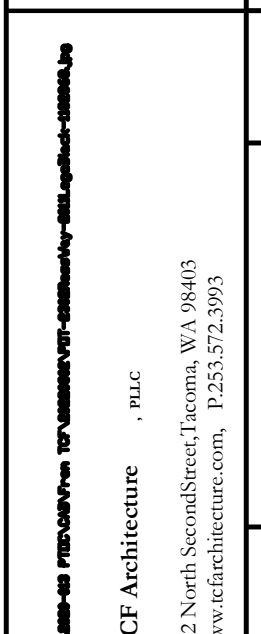

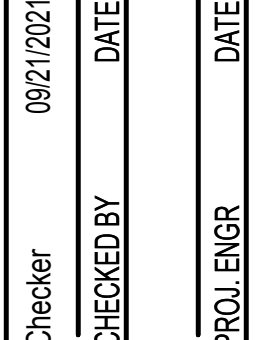
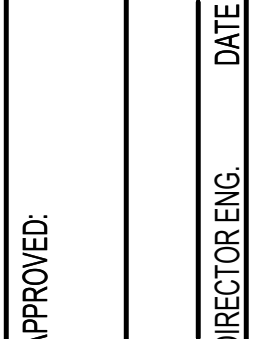
PHOTO 4



PHOTO 5

1 FIRST FLOOR REFERENCE PLAN
1/16" = 1'-0"



									
905 North Second Street, Tacoma, WA 98403 www.tcfarchitecture.com, 253.573.2993		TCF Architecture, P.L.L.C. 905 North Second Street, Tacoma, WA 98403 www.tcfarchitecture.com, 253.573.2993		PBS Engineering and Environmental Inc. 214 E Olive Street, Suite 300 Seattle, WA 98102 206.233.9639 pbseia.com		Director: [blank] DATE: [blank] Printed By: [blank] DATE: [blank]		Port Address: 3800 PORT OF TACOMA RD TACOMA, WA 98424	
6674 HM1.0		PORT OF TACOMA BUILDING DEMOLITION PROGRAM 2302 ROSS WAY		HAZARDOUS MATERIALS ABATEMENT PLAN RANGE: 03 SECTION: 34		TOWNSHIP: 21 DATE-HRZ: WA-83-SF M. ID: 101529.02 VERT: [blank]		PARCEL: 69650000260 DRAWING SCALE: AS NOTED	
PHASE: BID SET - 4/20/23		AS NOTED		AS NOTED		AS NOTED		AS NOTED	

THIS DRAWING IS THE PROPERTY OF THE PORT OF TACOMA AND SHALL NOT BE USED ON OTHER WORK, DISCLOSED, COPIED, IN WHOLE OR IN PART, WITHOUT WRITTEN PERMISSION

R:\2020-013 PTOC\PTOT - 2302 Ross Way.rvt