

Figure 1 - Port of Tacoma Location Map A



Legend

- Vessel Tracking
- Cargo Anchored
  - Cargo Underway
  - High Speed Anchored
  - High Speed Underway
  - Passenger Anchored
  - Passenger Underway
  - Tanker Anchored
  - Tanker Underway
  - Tug Anchored
  - Tug Underway
  - Vessel Anchored
  - Vessel Underway
  - Unknown

SCALE 1: 40,906

0 2 Miles

Map Produced 10/24/2022 By Author

© Port of Tacoma

DISCLAIMER: The information included on this map has been compiled by Port of Tacoma staff from a variety of sources and is subject to change without notice. These data are intended for informational purposes and should not be considered authoritative for engineering, navigational, legal and other site-specific uses. The Port of Tacoma makes no representations or warranties, express or implied, as to accuracy, completeness, timeliness, or rights to the use of such information.

Notes





## Legend

### Vessel Tracking

- Cargo Anchored
- Cargo Underway
- High Speed Anchored
- High Speed Underway
- Passenger Anchored
- Passenger Underway
- Tanker Anchored
- Tanker Underway
- Tug Anchored
- Tug Underway
- Vessel Anchored
- Vessel Underway
- Unknown

### Stormwater Outlets

- <all other values>
- Discharge to Ground
- Outfall
- System Connection

### Stormwater Conveyance

- <all other values>
- Pipe
- Culvert
- Ditch
- Trench Drain
- Underdrain

SCALE 1: 5,113

0 0 Miles

Map Produced 10/24/2022 By Author

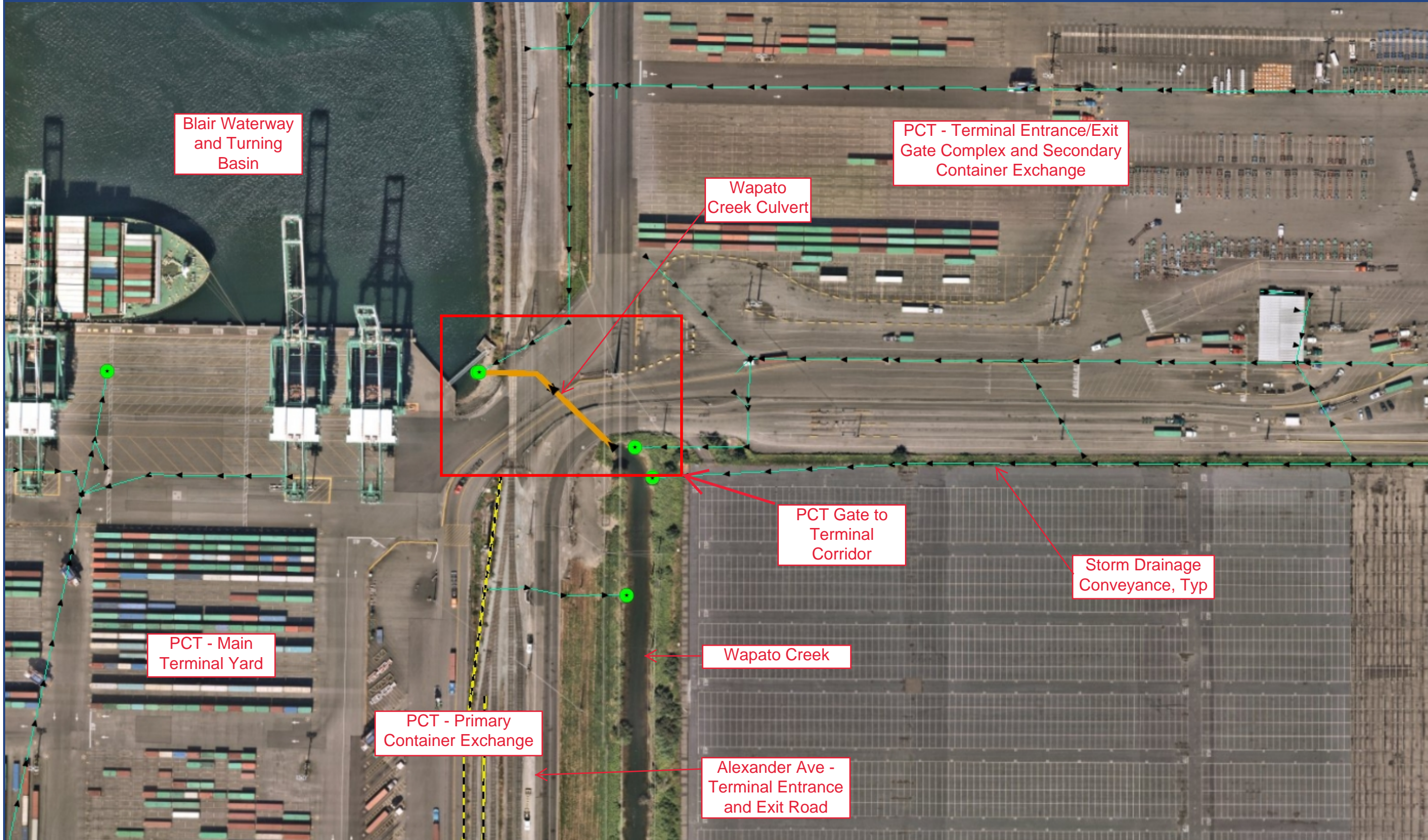
© Port of Tacoma

DISCLAIMER: The information included on this map has been compiled by Port of Tacoma staff from a variety of sources and is subject to change without notice. These data are intended for informational purposes and should not be considered authoritative for engineering, navigational, legal and other site-specific uses. The Port of Tacoma makes no representations or warranties, express or implied, as to accuracy, completeness, timeliness, or rights to the use of such information.

## Notes



Figure 3 - Wapato Creek Culvert Vicinity and Storm Drainage Map



#### Legend

##### Vessel Tracking

- Cargo Anchored
- Cargo Underway
- High Speed Anchored
- High Speed Underway
- Passenger Anchored
- Passenger Underway
- Tanker Anchored
- Tanker Underway
- Tug Anchored
- Tug Underway
- Vessel Anchored
- Vessel Underway
- Unknown

##### Stormwater Outlets

- <all other values>
- Discharge to Ground
- Outfall
- System Connection

##### Stormwater Conveyance

- <all other values>
- Pipe
- Culvert
- Ditch
- Trench Drain
- Underdrain

SCALE 1: 2,557

0 0 Miles

Map Produced 10/24/2022 By Author

© Port of Tacoma

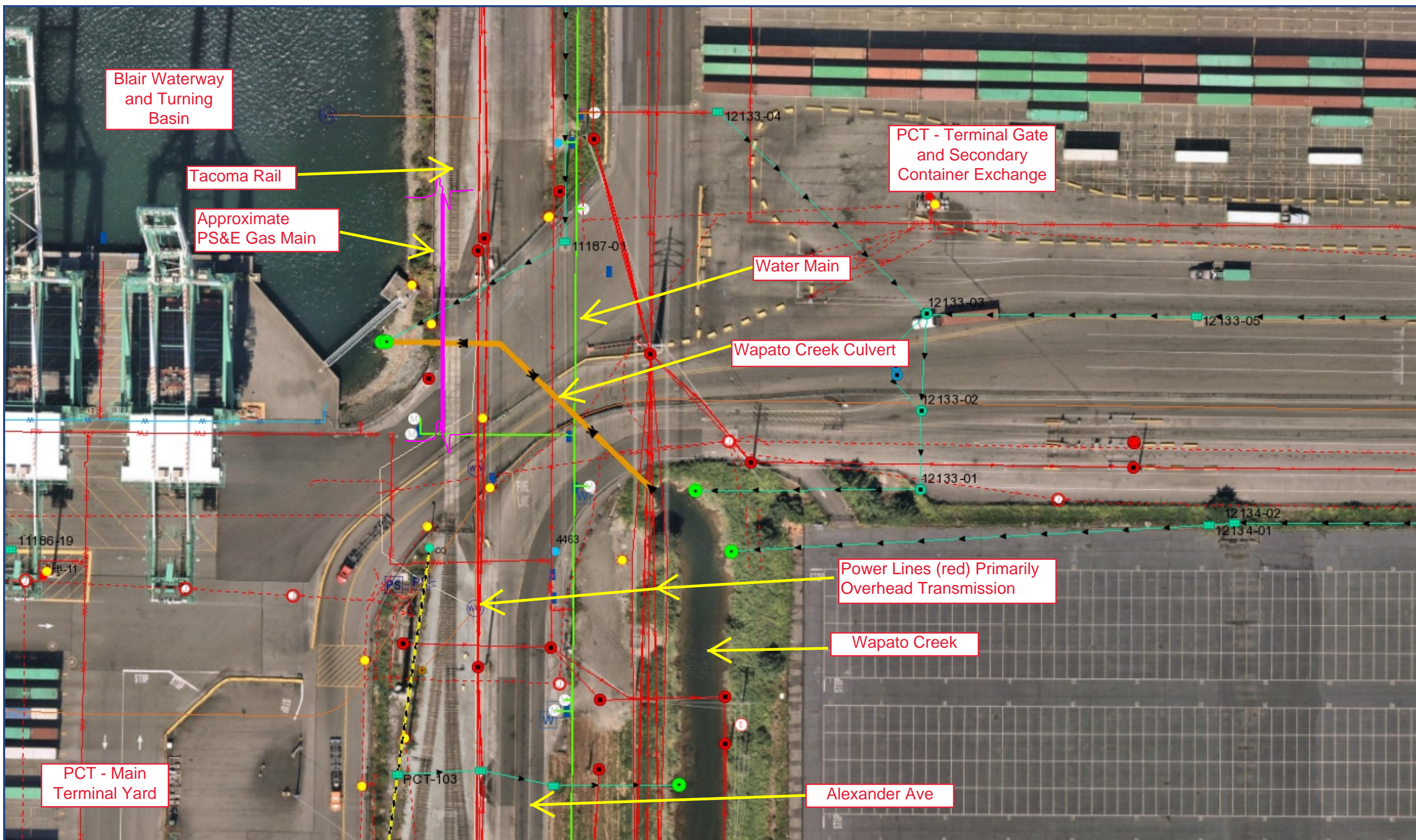
DISCLAIMER: The information included on this map has been compiled by Port of Tacoma staff from a variety of sources and is subject to change without notice. These data are intended for informational purposes and should not be considered authoritative for engineering, navigational, legal and other site-specific uses. The Port of Tacoma makes no representations or warranties, express or implied, as to accuracy, completeness, timeliness, or rights to the use of such information.

#### Notes

Primary stormwater conveyance, WCC shown in Orange



Figure 4 - Wapato Creek Culvert Vicinity and Composite Utilities Map



#### Legend

##### Stormwater Connections

- <all other values>
- Catch Basin Type 1
- Catch Basin Type 2
- Catch Basin Unknown
- Treatment Lid
- BD Bridge Drain
- RD Roof Downspout
- AD Area Drain
- CO Cleanout
- BP Bypass
- FC Flow Control Device
- LS Lift Station
- Other

##### Stormwater Outlets

- <all other values>
- Discharge to Ground
- Outfall
- System Connection

##### Stormwater Conveyance

- <all other values>
- Pipe
- Culvert
- Ditch
- Trench Drain
- Underdrain

- ⊙ Capacitor
- ⊙ Generator
- ⊙ Junction
- ⊙ Lights
- Poles
- ▲ Services
- Substation
- ⊙ Switch
- Transformer
- ⊙ UPS

##### Power Lines

- Overhead
- Underground

##### Water Hydrants

- <all other values>

SCALE 1: 1,278

0 0 Miles

Map Produced 10/24/2022 By Author

© Port of Tacoma

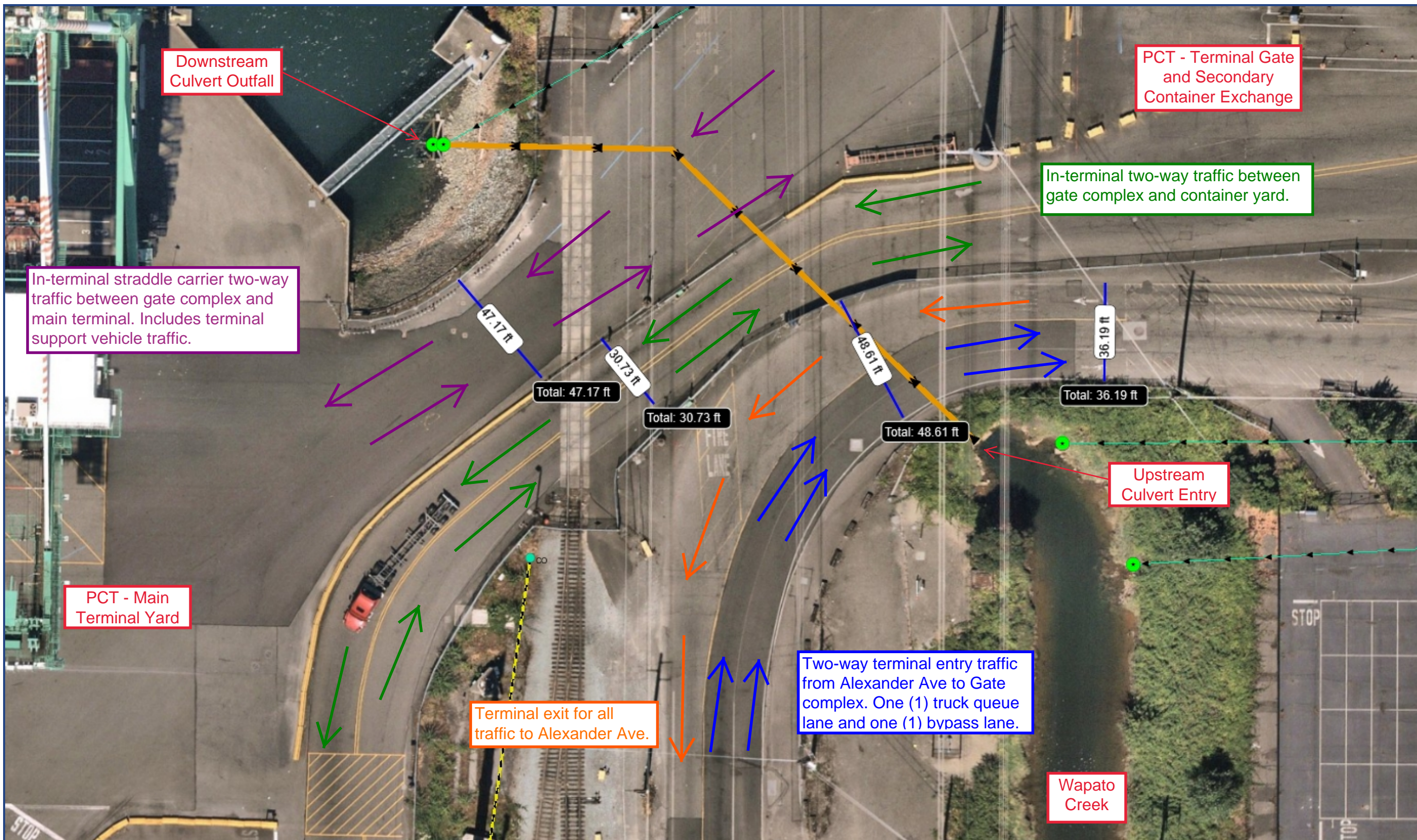
DISCLAIMER: The information included on this map has been compiled by Port of Tacoma staff from a variety of sources and is subject to change without notice. These data are intended for informational purposes and should not be considered authoritative for engineering, navigational, legal and other site-specific uses. The Port of Tacoma makes no representations or warranties, express or implied, as to accuracy, completeness, timeliness, or rights to the use of such information.

#### Notes

Composite utility map



Figure 5 - Wapato Creek Culvert Vicinity and Traffic Flow Map



#### Legend

##### Stormwater Connections

- <all other values>
- Catch Basin Type 1
- Catch Basin Type 2
- Catch Basin Unknown
- Treatment Lid
- BD Bridge Drain
- RD Roof Downspout
- AD Area Drain
- CO Cleanout
- BP Bypass
- FC Flow Control Device
- LS Lift Station
- Other

##### Stormwater Outlets

- <all other values>
- Discharge to Ground
- Outfall
- System Connection

##### Stormwater Treatment Infor

- <all other values>
- Biofiltration Strip
- Bioretention
- DP Detention Pond
- DS Downspout Treatment
- DT Detention
- FL Filterra
- SF Storm Filter
- UP Upflow System
- Jellyfish
- Modular Wetland
- Oil-Water Separator - API
- Oil-Water Separator - CPI
- Oil-Water Separator - Unknown
- Other Above Ground Treatment
- Other Below Ground Treatment

##### Stormwater Conveyance

- <all other values>
- Pipe
- Culvert
- Ditch

SCALE 1: 639

0 0 Miles

Map Produced 10/25/2022 By Author

© Port of Tacoma

DISCLAIMER: The information included on this map has been compiled by Port of Tacoma staff from a variety of sources and is subject to change without notice. These data are intended for informational purposes and should not be considered authoritative for engineering, navigational, legal and other site-specific uses. The Port of Tacoma makes no representations or warranties, express or implied, as to accuracy, completeness, timeliness, or rights to the use of such information.

#### Notes

Traffic routing in Wapato Creek Culvert vicinity