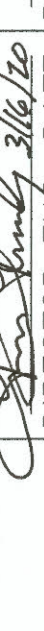


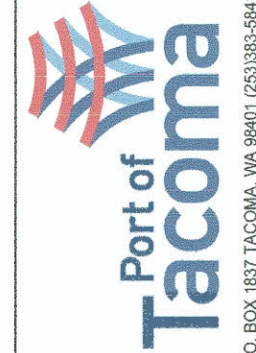
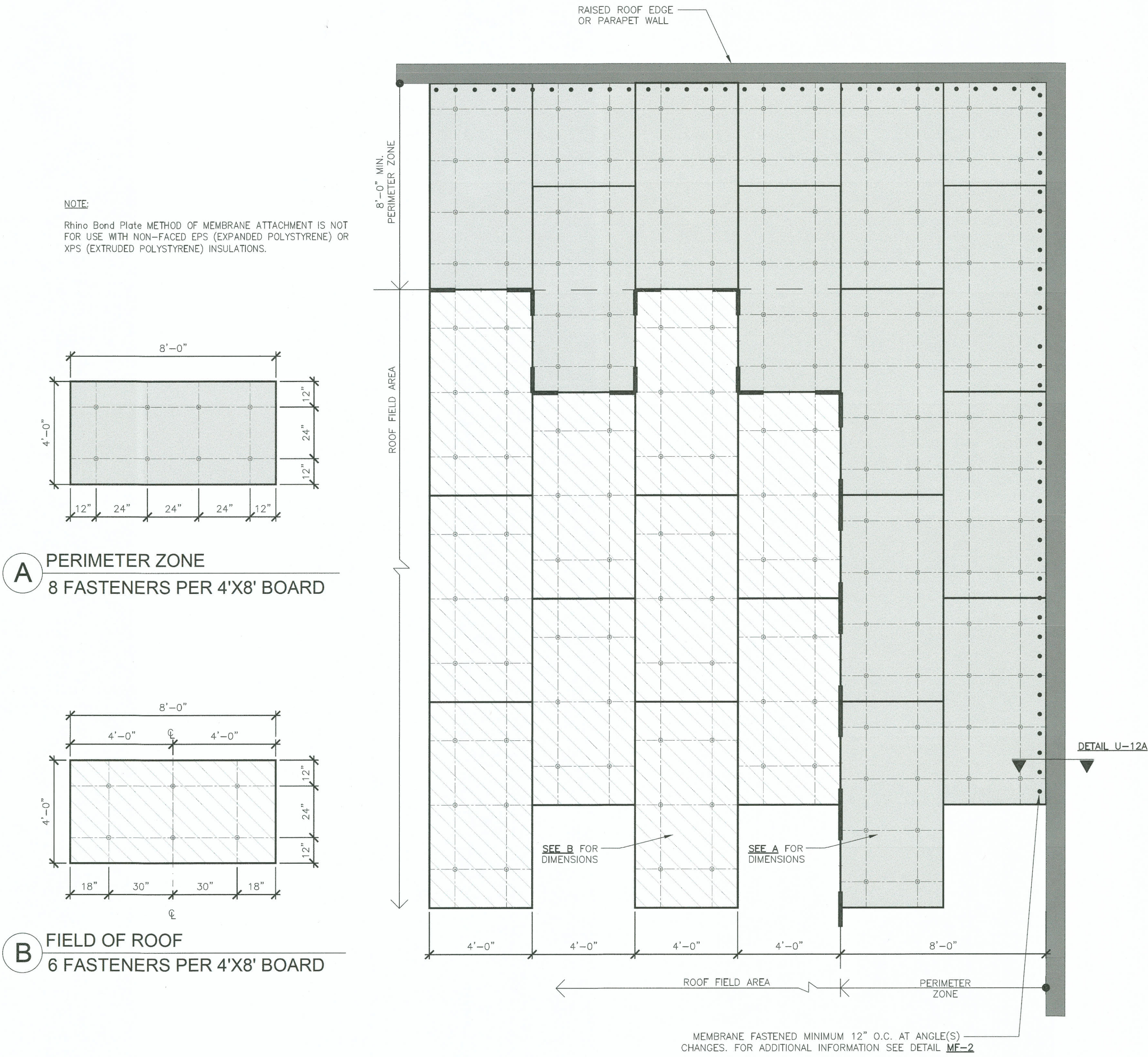


<div>6607</div> <div>A3.1E</div>				GUARDHOUSES 75, 575, 975 / BLDGS 700, 900				APPROVED:		CHECKED BY		DATE															
MAINTENANCE AND ROOF REPAIRS				DETAILS - GUARDHOUSE 975						DIRECTOR		DATE															
TOWNSHIP: 071126				RANGE:				SECTION:				PRINTED BY: Harper		Feb 14, 2020													
M. ID: 201062.04				DAT-HRZ: **				VERT: **				PORT ADDRESS: ADDRESS															
PHASE: 100%				PARCEL:				DRAWING SCALE: AS NOTED				TACOMA, WA 98401-1837															
INNOVA architects														950 Pacific Avenue, Suite 450 Tacoma, WA 98402 253-572-4903													
																											
														7508 REGISTERED PROFESSIONAL ENGINEER STATE OF WASHINGTON													
<div>REUSE OF DOCUMENTS</div> <div>THIS DOCUMENT IS A REUSE OF AN EXISTING DOCUMENT. THE INFORMATION ON THIS DOCUMENT WILL AVAILABLE TO THE PUBLIC AND MAY BE REPRODUCED OR TRANSMITTED IN ANY FORM OR BY ANY MEANS, ELECTRONIC OR MECHANICAL, INCLUDING PHOTOCOPYING, RECORDING, OR BY ANY INFORMATION STORAGE AND RETRIEVAL SYSTEM, WITHOUT PERMISSION IN WRITING FROM THE ARCHITECT. THE ARCHITECT IS NOT TO BE RESPONSIBLE FOR ANY REUSE OF THIS DOCUMENT.</div>														BY:				APPR:				DATE:					
MARK:														REVISION:				BY:				APPR:				DATE:	

REUSE OF DOCUMENTS
THIS DOCUMENT HAS BEEN ELECTRONICALLY REPRODUCED FROM THE ORIGINAL DRAWING. IT IS THE USER'S RESPONSIBILITY TO VERIFY THE ACCURACY OF THE INFORMATION AND DATA CONTAINED HEREIN. THE INFORMATION CONTAINED HEREIN IS NOT TO BE USED IN ANY MANNER THAT COULD BE CONSIDERED A VIOLATION OF THE PROFESSIONAL SERVICE OF THE ARCHITECT. THE ARCHITECT'S LIABILITY IS LIMITED TO THE PROFESSIONAL SERVICE OF THE ARCHITECT. THE ARCHITECT'S LIABILITY IS LIMITED TO THE PROFESSIONAL SERVICE OF THE ARCHITECT. THE ARCHITECT'S LIABILITY IS LIMITED TO THE PROFESSIONAL SERVICE OF THE ARCHITECT.





DECK TYPE	DECK THICKNESS	FASTENER	THERMOPLASTIC * COATED PLATE	PIRANHA *
STEEL	22 GAUGE	CARLISLE HP-X FASTENER	3-1/8" DIAMETER W/ SECTION WELD	10" PRESSURE SENSITIVE RUSS & PLATE
PLYWOOD	15/32"			
NOTE: AT IN-FILL MINOR PIECES, USE MIN. 2 FASTENERS.			* GC OPTION	

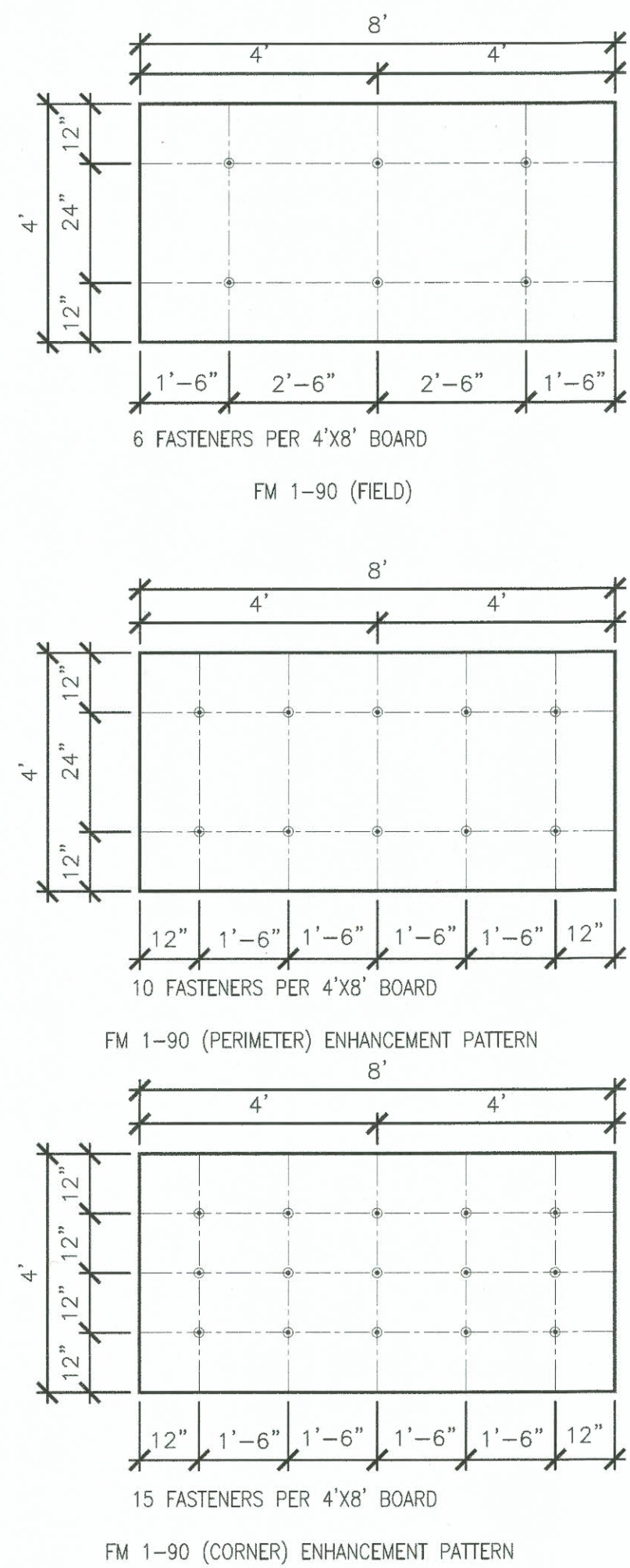
ATTACHMENT METHOD - NUMBER OF FASTENERS AND LOCATIONS

N.T.S

RO-18

(CARLISLE DETAIL RB-1)

2



ATTACHMENT METHOD - FM FASTENING PATTERNS

N.T.S

RO-20

(CARLISLE DETAIL RB-3)

1

LEGEND

- THERMOPLASTIC MEMBRANE
- APPROVED SUBSTRATE
- PERIMETER AREA
- FIELD AREA
- WOOD NAILER (BY OTHERS)
- CARLISLE FASTENER & Piranha Plate FASTENER PLATE
- SEE NOTE(S)

- APPLICABLE BONDING ADHESIVE. USE OF CAV-GRIP MAY ALSO BE USED FOR UP TO 20 YEAR WARRANTY
- WATER CUT-OFF MASTIC- MUST BE HELD UNDER CONSTANT COMPRESSION.

GENERAL NOTES

- PROJECT SPECIFIC DETAILS SHALL SUPERCEDE TYPICAL DETAILING.
- THE GENERAL DETAILS SHALL BE FOLLOWED IN THE CONSTRUCTION.
- VERIFY EXISTING SUBSTRATES ARE ADEQUATE.

6607
A5.0

GUARDBOUSES 75, 575, 975 / BLDGS 700, 900
MAINTENANCE AND ROOF REPAIRS

CONT/CONS: 071126
M. ID: 201062.04
PHASE: 100%

GENERAL DETAILS

TOWNSHIP: **
DATE-HRZ: **
PARCEL: **

RANGE: **
SECTION: **
DRAWING SCALE: AS NOTED

APPROVED:

DIRECTOR E.K.G. DATE

PRINTED BY: CHARTER FEB 14, 2020

PORT ADDRESS: ADDRESS

TACOMA, WA 98401-1837

INNOVA
architects

950 Pacific Avenue, Suite 450
Tacoma, WA 98402
253-572-4903

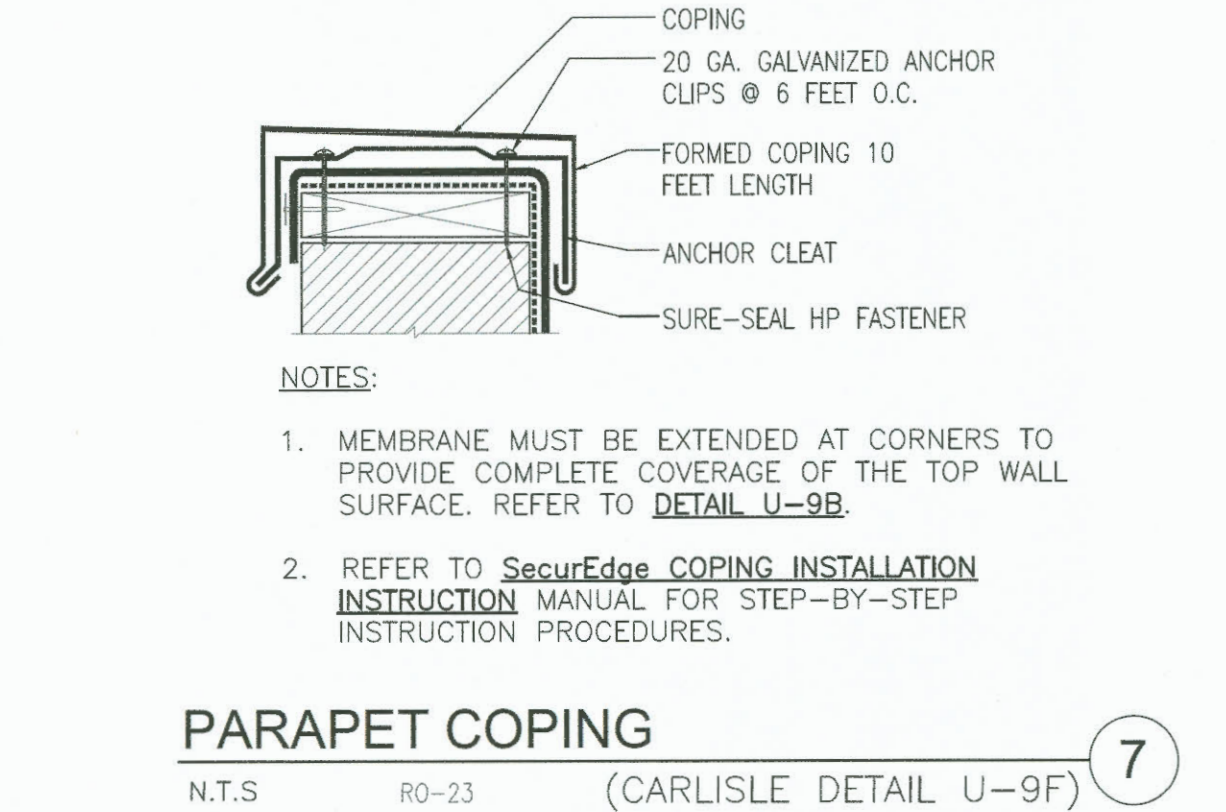
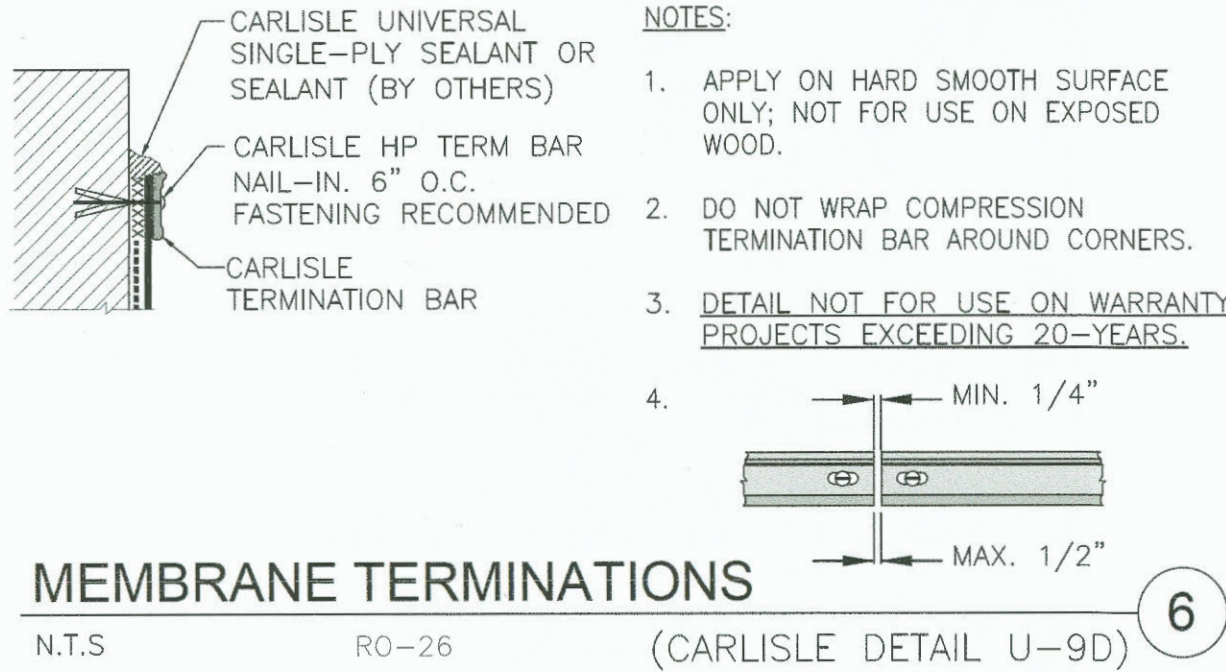
REUSE OF DOCUMENTS

THIS DOCUMENT IS THE PROPERTY OF INNOVA ARCHITECTS. IT IS TO BE USED ONLY FOR THE PROJECT AND SITE SPECIFICALLY IDENTIFIED HEREIN. IT IS NOT TO BE REPRODUCED, COPIED, OR TRANSMITTED IN ANY FORM OR BY ANY MEANS, WITHOUT THE WRITTEN PERMISSION OF INNOVA ARCHITECTS.

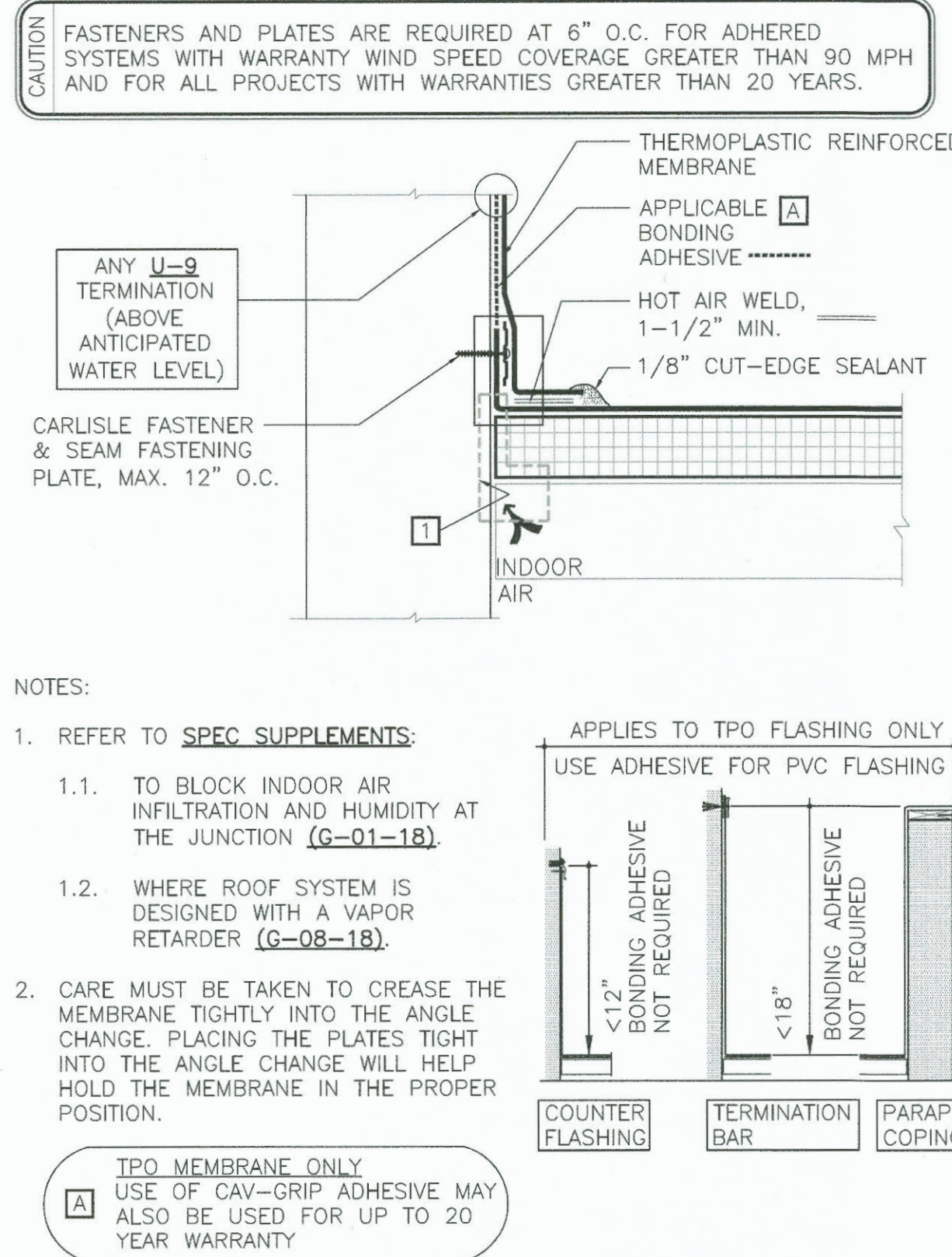
MARK: REVISION: BY: APPR: DATE:

Port of Tacoma

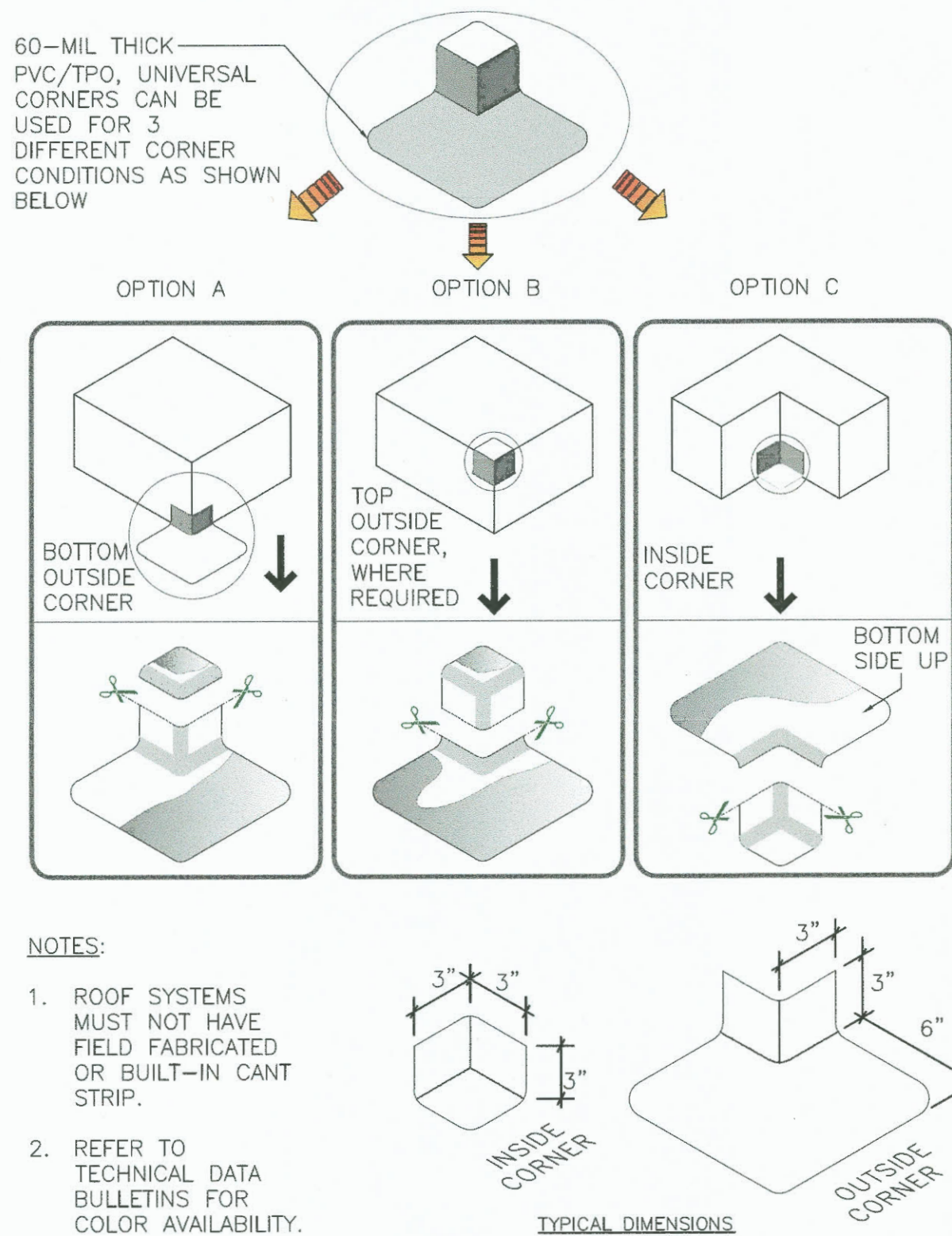
P.O. BOX 1837 TACOMA, WA 98401-1837



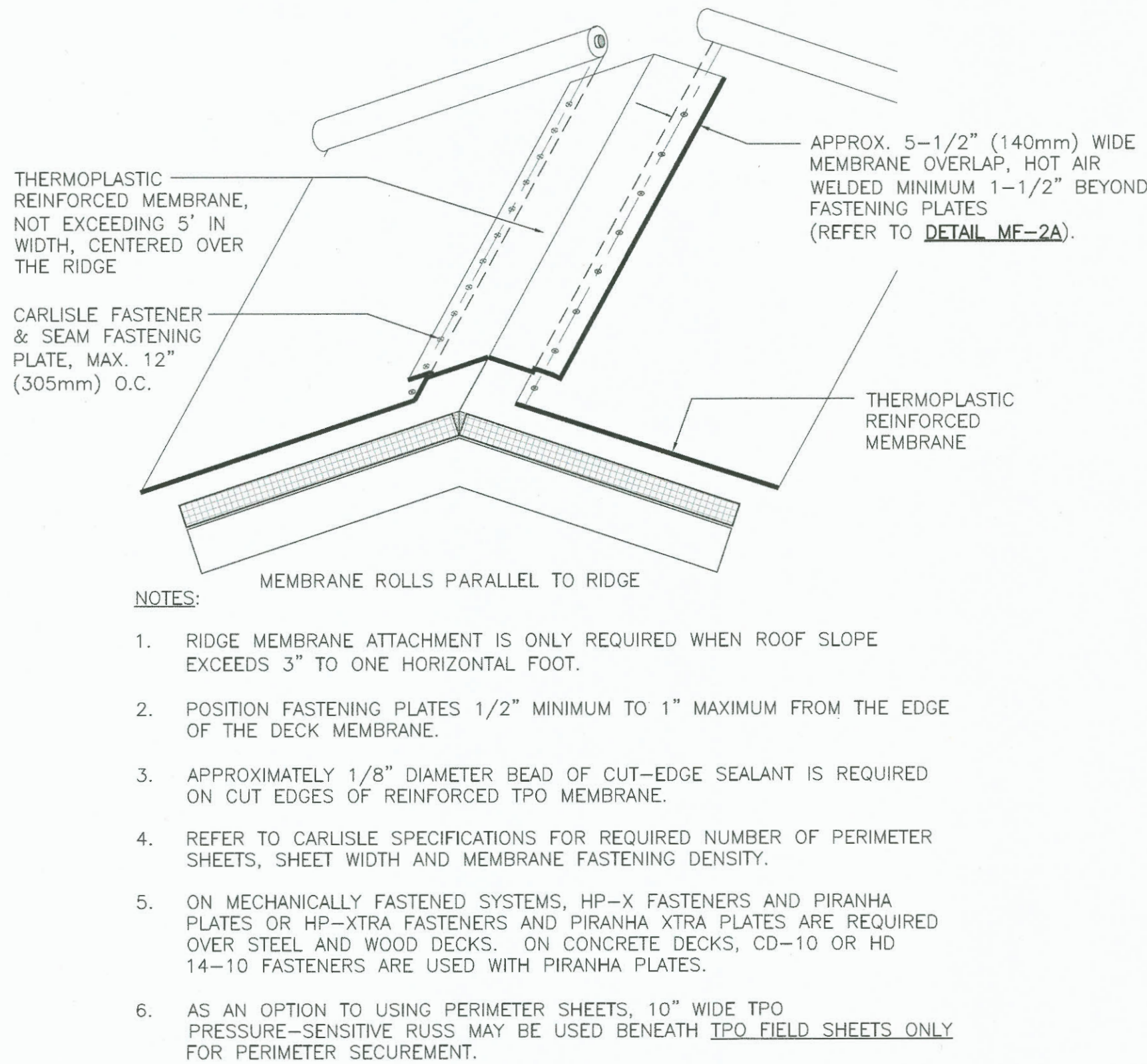
PARAPET COPING
N.T.S RO-23 (CARLISLE DETAIL U-9F) 7



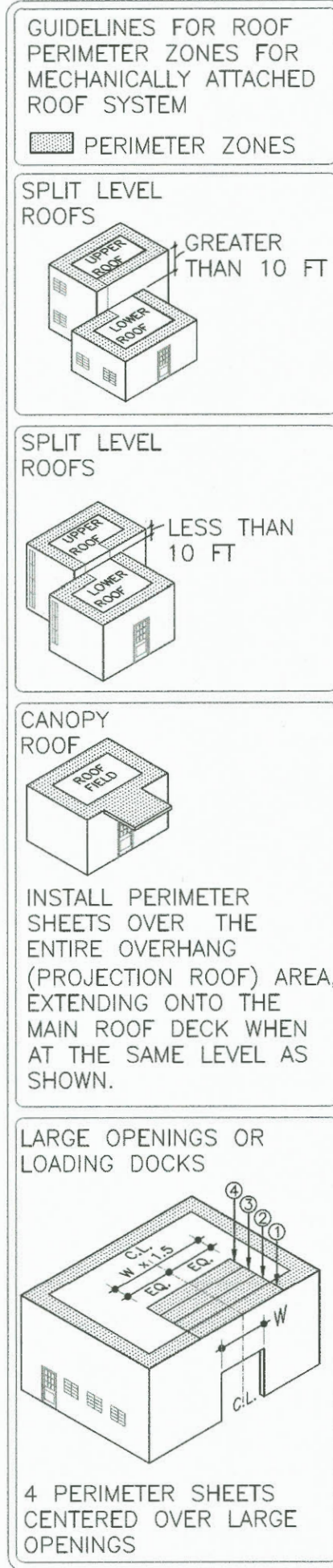
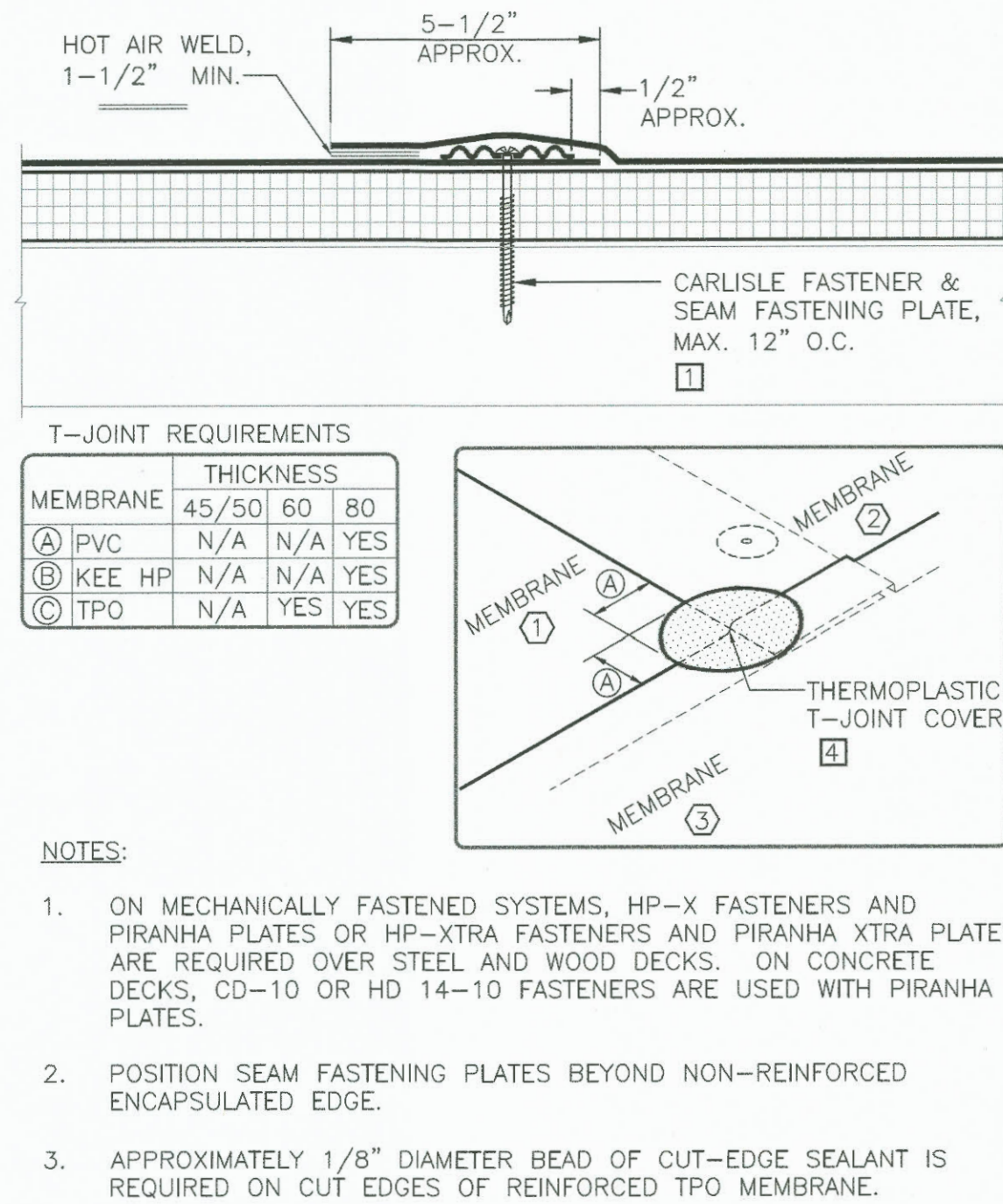
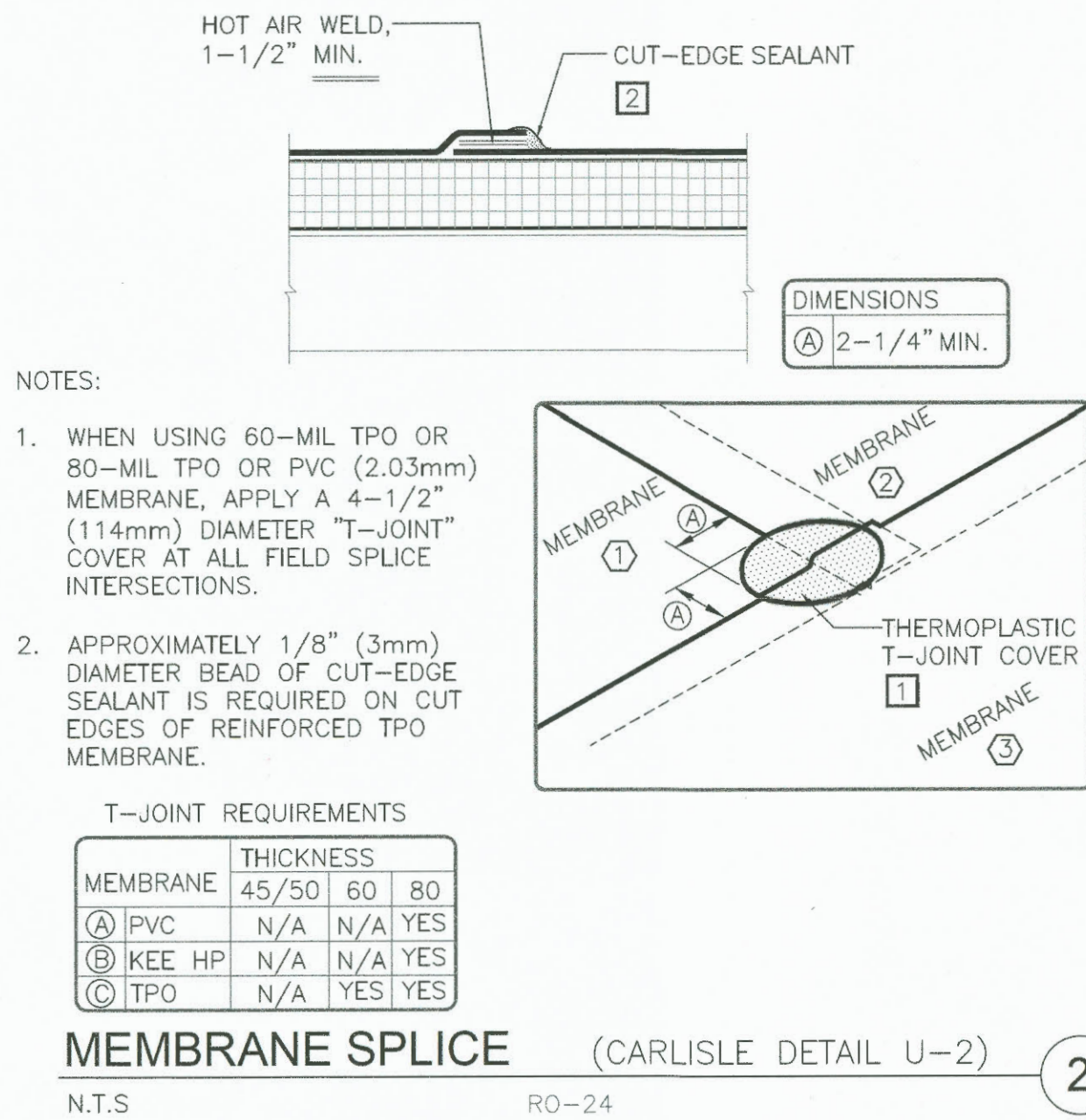
PARAPET FLASHING / AIR BARRIER
N.T.S RO-24 (CARLISLE DETAIL U-12A) 9



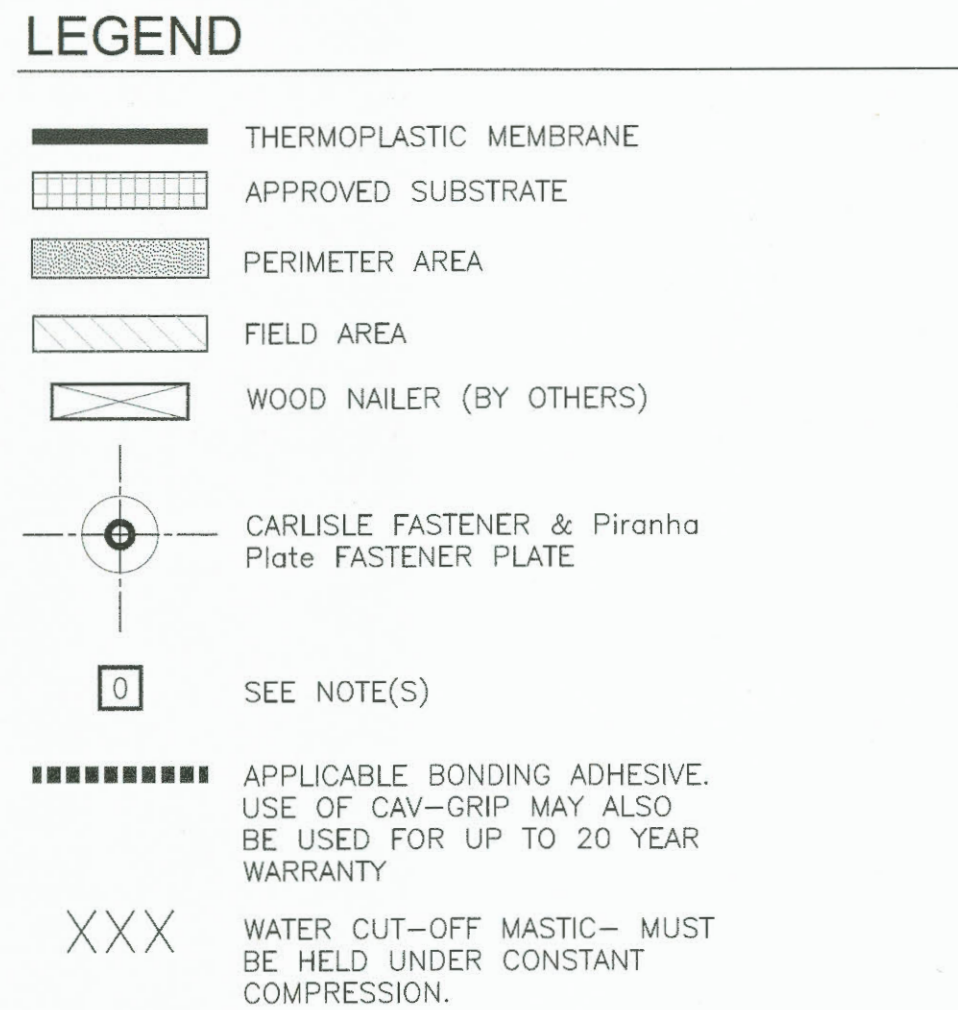
TPO INSIDE & OUTSIDE CORNERS
N.T.S RO-21 (CARLISLE DETAIL U-15G) 4



RIDGE MEMBRANE ATTACHMENT
N.T.S RO-28 (CARLISLE DETAIL MF-22) 5

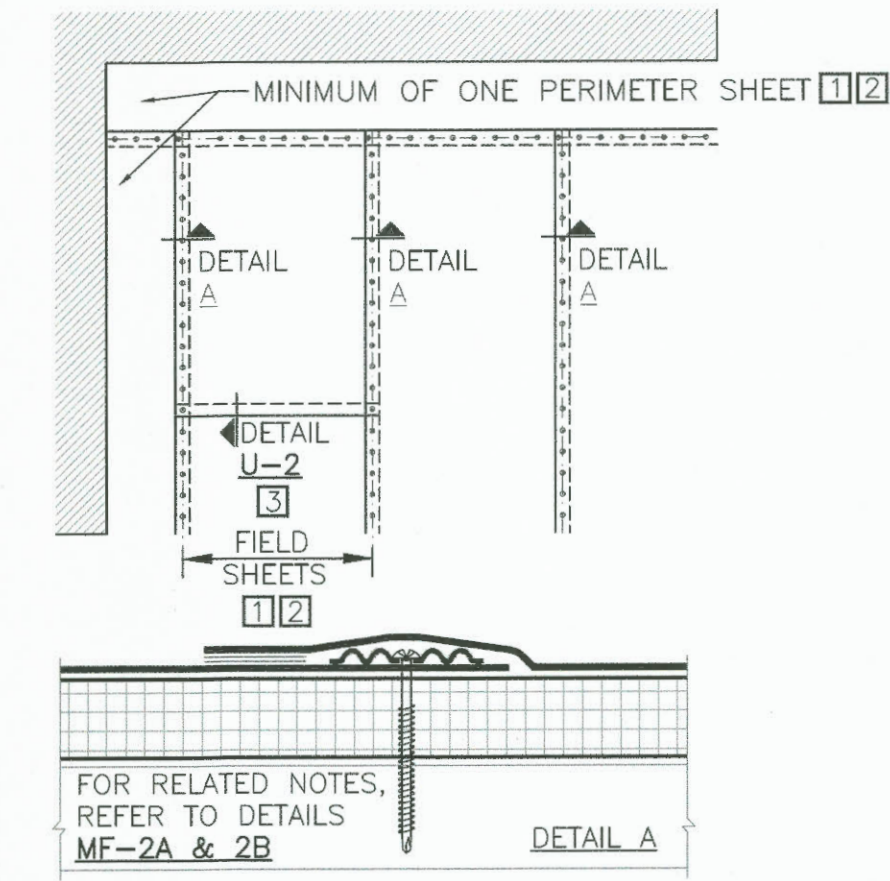


MEMBRANE SECUREMENT
N.T.S RO-30 (CARLISLE DETAIL MF-2) 1



GENERAL NOTES

- PROJECT SPECIFIC DETAILS SHALL SUPERCEDE TYPICAL DETAILING.
- THE GENERAL DETAILS SHALL BE FOLLOWED IN THE CONSTRUCTION.
- VERIFY EXISTING SUBSTRATES ARE ADEQUATE.

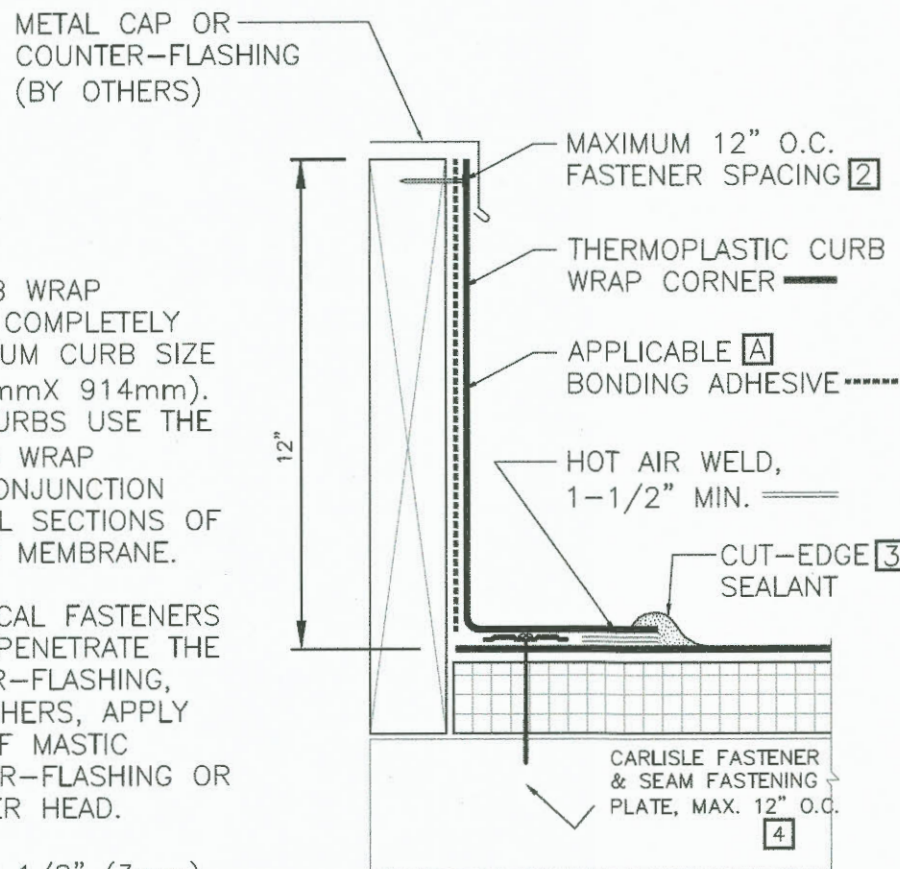


NOTES:

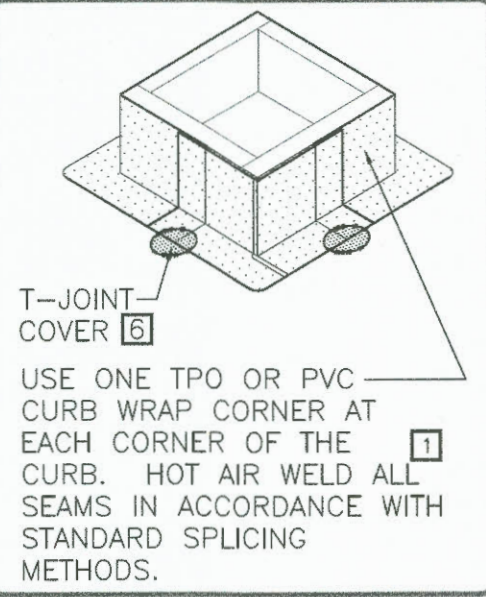
- WHEN USING 10' (3048mm) OR 12' (3658mm) WIDE TPO FIELD SHEETS, 6' (1829mm) WIDE PERIMETER SHEETS ARE UTILIZED. WHEN USING 8' (2438mm) WIDE TPO FIELD SHEETS, 4' (1219mm) WIDE PERIMETER SHEETS ARE USED. WHEN USING 10' (3048mm) WIDE PVC FIELD SHEETS, 5' (1524mm) WIDE PERIMETER SHEETS ARE UTILIZED. WHEN USING 81" (2057mm) WIDE PVC FIELD SHEETS, 40.5" (1029mm) WIDE PERIMETER SHEETS ARE USED.
- REFER TO CARLISLE SPECIFICATIONS FOR REQUIRED NUMBER OF PERIMETER SHEETS, SHEET WIDTH AND MEMBRANE FASTENING DENSITY.
- END LAPS DO NOT REQUIRE MECHANICAL FASTENING AND SHALL BE OVERLAPPED 2" (51mm) MINIMUM. REFER TO THERMOPLASTIC **DETAIL U-2**.

NOTES:

- FOUR (4) CURB WRAP CORNERS WILL COMPLETELY FLASH A MAXIMUM CURB SIZE OF 3'X3' (914mmX 914mm). FOR LARGER CURBS, USE THE TPO/PVC CURB WRAP CORNERS IN CONJUNCTION WITH ADDITIONAL SECTIONS OF THERMOPLASTIC MEMBRANE.
- WHEN MECHANICAL FASTENERS ARE USED TO PENETRATE THE METAL COUNTER-FLASHING, USE EPDM WASHERS. APPLY WATER CUT-OFF MASTIC UNDER COUNTER-FLASHING OR CAULK FASTENER HEAD.
- APPROXIMATELY 1/8" (3mm) BEAD OF CUT-EDGE SEALANT IS REQUIRED ON THE CUT EDGES OF THE TPO FIELD WRAP CORNER.
- REFER TO CARLISLE SPECIFICATIONS FOR ACCEPTABLE CARLISLE FASTENERS AND PLATES.
- CUSTOM SIZES ARE AVAILABLE FOR CURB FLASHING HEIGHTS GREATER THAN 12" (305mm).
- IF THE PRE-FABRICATED CURB WRAP IS A "CFA" LABELED PART, NO "T-JOINT" COVERS ARE REQUIRED. SEE **INSET 1**.
- APPLICABLE BONDING ADHESIVE FOR PVC OR TPO. IN CASE OF TPO, CAV-GRIP ADHESIVE MAY ALSO BE USED ON VERTICAL PORTION.

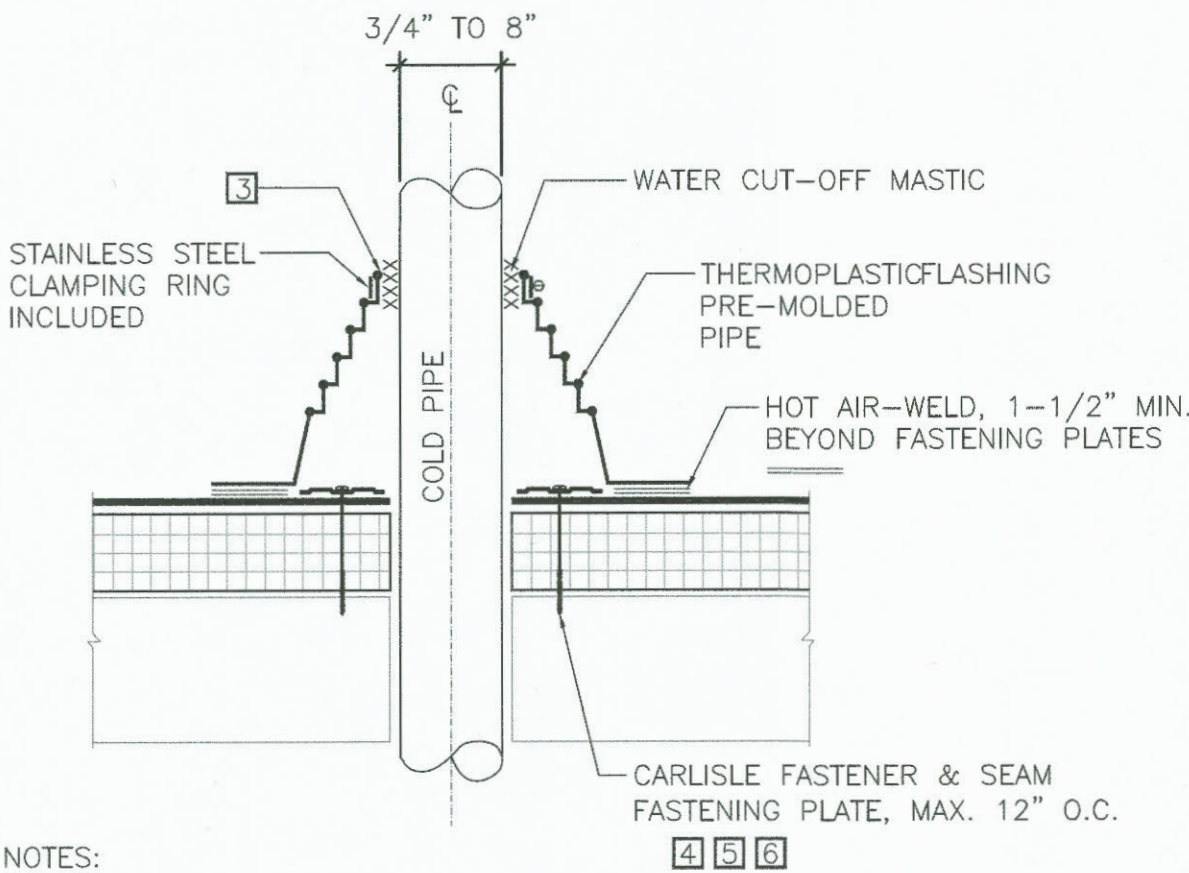


TPO MEMBRANE ONLY
USE OF CAV-GRIP
ADHESIVE MAY ALSO BE
USED FOR UP TO 20 YEAR
WARRANTY



PRE-FABRICATED SURE-WELD TPO

N.T.S R0-29 (CARLISLE DETAIL U-5C) 2



- NOTES:
- REMOVE ALL EXISTING LEAD AND FLASHING MATERIAL BEFORE INSTALLING PRE-MOLDED PIPE FLASHING.
 - TEMPERATURE OF THE PIPE PENETRATION MUST NOT EXCEED 140°F (60°C) WHEN USING PVC AND 160°F (71°C) WHEN USING TPO FLASHING.
 - PIPE SEAL MUST HAVE INTACT RIB AT TOP EDGE, REGARDLESS OF PIPE DIAMETER.
 - INSTALL A MINIMUM OF 4 FASTENERS AND PLATES AROUND THE PIPE, EQUALLY SPACED. IF FASTENERS AND PLATES CANNOT BE INSTALLED AS SHOWN, THEY MAY ALSO BE POSITIONED OUTSIDE THE PIPE MAXIMUM 12" (305mm) O.C. AND FLASHED WITH THERMOPLASTIC REINFORCED MEMBRANE / TPO CUT-EDGE SEALANT. REFER TO **DETAIL U-8B**.
 - FASTENERS AND PLATES ARE NOT REQUIRED ON ADHERED SYSTEMS UNLESS PIPE DIAMETER EXCEEDS 18" (457mm).
 - ON MECHANICALLY FASTENED SYSTEMS, HP-X FASTENERS AND PIRANHA PLATES OR HP-XTRA FASTENERS AND PIRANHA EXTRA PLATES ARE REQUIRED OVER STEEL AND WOOD DECKS. ON CONCRETE DECKS, CD-10 OR HD 14-10 FASTENERS ARE USED WITH PIRANHA PLATES.

PIPE- MOLDED PIPE FLASHING

N.T.S R0-24 (CARLISLE DETAIL U-8A) 3

REFER TO
APPLICABLE SMACNA
(LATEST EDITION)
DETAILS

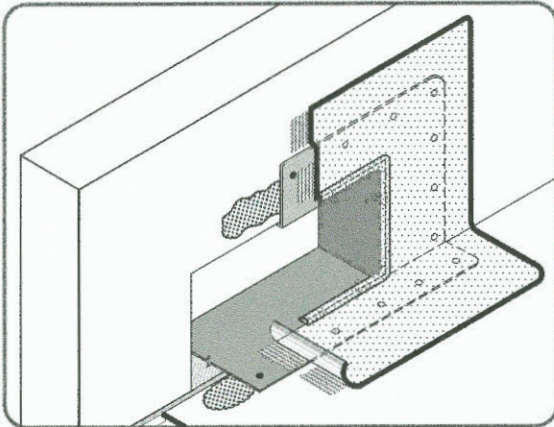
THERMOPLASTIC
COATED SHEET
METAL SCUPPER

SEALANT
(BY OTHERS)

NOTES:

- WOOD NAILERS ARE INSTALLED ONLY AT SCUPPERS TO SECURE METAL SLEEVE AND MUST EXTEND PAST THE WIDTH OF METAL SLEEVE FLANGE.
- INSTALL WALL FLASHING PRIOR TO SCUPPER INSTALLATION.
- METAL SCUPPER BOX MUST HAVE CONTINUOUS FLANGES WITH ROUNDED CORNERS.
- WATER CUT-OFF MASTIC UNDER SCUPPER FLANGE MUST BE UNDER CONSTANT COMPRESSION.
- SCUPPER FLANGES MUST BE TOTALLY COVERED BY NON-REINFORCED FLASHING WITH MINIMUM 2" (51mm) COVERAGE PAST NAIL HEAD.
- UNIVERSAL SINGLE-PLY SEALANT IS REQUIRED AT FLASHING EDGES ON SCUPPER EDGE. WHEN USING TPO MEMBRANE, TPO PRIMER MUST BE USED TO PREPARE SURFACES PRIOR TO THE APPLICATION OF SEALANT.

TPO MEMBRANE ONLY
USE OF CAV-GRIP ADHESIVE
MAY ALSO BE USED FOR UP
TO 20 YEAR WARRANTY



SCUPPER

N.T.S R0-19 (CARLISLE DETAIL U-18A) 1

LEGEND

- THERMOPLASTIC MEMBRANE
- APPROVED SUBSTRATE
- PERIMETER AREA
- FIELD AREA
- WOOD NAILER (BY OTHERS)
- CARLISLE FASTENER & Piranha Plate FASTENER PLATE
- SEE NOTE(S)
- APPLICABLE BONDING ADHESIVE. USE OF CAV-GRIP MAY ALSO BE USED FOR UP TO 20 YEAR WARRANTY
- WATER CUT-OFF MASTIC- MUST BE HELD UNDER CONSTANT COMPRESSION.

GENERAL NOTES

- PROJECT SPECIFIC DETAILS SHALL SUPERCEDE TYPICAL DETAILING.
- THE GENERAL DETAILS SHALL BE FOLLOWED IN THE CONSTRUCTION.
- VERIFY EXISTING SUBSTRATES ARE ADEQUATE.