

**Portac - 210158**

Project Address &amp; Site Specific Location

Port of Tacoma - Parcel 15 Tacoma, WA, SW corner of site

**Environmental Exploration Log**

Coordinates

NA

Exploration Number

**AB-01**

Contractor

Cascade

Equipment

Geoprobe 7822

Sampling Method

Percussion hammer

Ground Surface Elev.

25' (est)

Operator

Kyle

Exploration Method(s)

Direct push

Work Start/Completion Dates

11/17/2021

Top of Casing Elev.

NA

Depth to Water (Below GS)

15' (ATD)

Depth (feet)	Elev. (feet)	Exploration Notes and Completion Details	Sample Type/ID	Analytical Sample Number & Lab Test(s)	Field Tests	Material Type	Description	Depth (ft)
		Surface restored with concrete					CONCRETE; roller compacted concrete.	
		Backfilled with 3/8" NSF60 bentonite chips.					<b>GRAVEL BASE COURSE</b> GRAVEL WITH SAND (GP); loose, wet, medium light gray, base course; fine to coarse angular gravel; dark yellowish orange, fine sand in bottom of sampler.	
5	20						<b>FILL CONTAINING SLAG</b> GRAVEL (GP); loose, moist, black; angular, fine to coarse slag fragments. SAND WITH SILT (SP-SM); moist, moderate brown; fine to medium sand; trace fine to coarse gravel; some oxide staining throughout; trace woody organics.	5
10	15						<b>SILTY SAND</b> SILTY SAND (SM); moist, brownish black; fine sand; low plasticity fines. SAND WITH SILT (SP-SM); moist, very dusky purple; fine sand; non-plastic fines.	10
15	10	11/17/2021					Becomes wet and coarser; fine to medium sand.	15
				AB-01-15			<b>ALLUVIAL CREEK DEPOSITS</b> SAND (SW); loose, wet, black; medium sand; 10 to 15% red sand grains; trace to no silt; trace woody organics throughout.	
20	5						Trace fine gravel.	20
				AB-01-21			Pocket of fine sand with silt, 2-3 inches thick.	
							Woody debris and trace fine to coarse gravel.	
25	0						Bottom of exploration at 25 ft. bgs.	25

**Legend**

- ☐ No Soil Sample Recovery  
☒ Continuous core 1.85" ID

Water Level

11/17/2021 Water Level ATD

See Exploration Log Key for explanation of symbols

Logged by: BCC/AWP  
Approved by: AJY**Exploration Log**  
**AB-01**

Sheet 1 of 1

**Portac - 210158**

Project Address &amp; Site Specific Location

Port of Tacoma - Parcel 15 Tacoma, WA, SW area of the site

**Environmental Exploration Log**

Coordinates

NA

Exploration Number

**AB-02**

Contractor

Cascade

Equipment

Geoprobe 7822

Sampling Method

Percussion hammer

Ground Surface Elev.

25.75' (est)

Operator

Kyle

Exploration Method(s)

Direct push

Work Start/Completion Dates

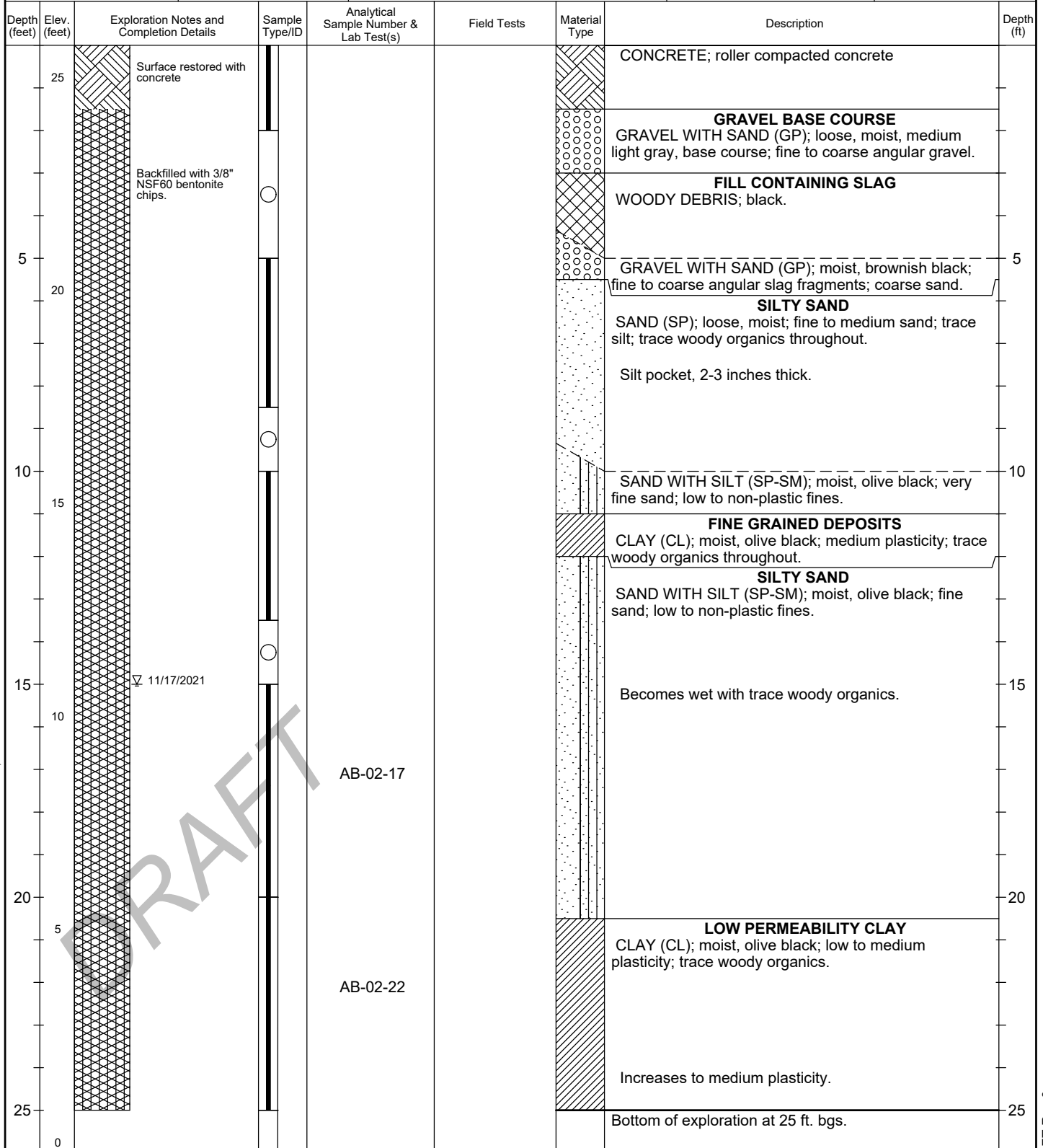
11/17/2021

Top of Casing Elev.

NA

Depth to Water (Below GS)

15' (ATD)

**Legend**

- No Soil Sample Recovery
- Continuous core 1.85" ID

Water Level

Water Level ATD

See Exploration Log Key for explanation of symbols

Logged by: BCC/AWP  
Approved by:**Exploration Log**  
**AB-02**

Sheet 1 of 1

**Portac - 210158****Environmental Exploration Log**

Project Address &amp; Site Specific Location

Coordinates

Exploration Number

Port of Tacoma - Parcel 15 Tacoma, WA, W side of the site

NA

**AB-03**

Contractor

Equipment

Sampling Method

Ground Surface Elev.

Cascade

Geoprobe 7822

Percussion hammer

27' (est)

Operator

Exploration Method(s)

Work Start/Completion Dates

Top of Casing Elev.

Depth to Water (Below GS)

Kyle

Direct push

11/17/2021

NA

17' (ATD)

Depth (feet)	Elev. (feet)	Exploration Notes and Completion Details	Sample Type/ID	Analytical Sample Number & Lab Test(s)	Field Tests	Material Type	Description	Depth (ft)
		Surface restored with concrete					CONCRETE; roller compacted concrete	
25							<b>GRAVEL WITH BASE COURSE</b> GRAVEL WITH SAND (GP); loose, moist, medium light gray, base course; fine to coarse angular gravel.	
		Backfilled with 3/8" NSF60 bentonite chips.					<b>FILL CONTAINING SLAG</b> GRAVEL (GP); loose, moist, brownish black; fine to coarse, angular slag fragments.	
5							GRAVEL WITH SAND (GP); moist; coarse gravel; fine sand; woody organics.	5
							GRAVEL WITH SAND (GP); brownish black; medium slag fragments; fine sand.	
20							<b>SILTY SAND</b> SAND WITH SILT (SP-SM); moist, brownish black; fine to coarse sand; non-plastic fines.	
10								10
							Becomes finer, low plasticity fines.	
15							<b>FINE GRAINED DEPOSITS</b> CLAY (CL); moist, olive black; medium plasticity.	
							SAND (SW); wet, loose, black with red flecks; fine to medium sand; interfingers with clay inch 3 to 4 inch layers.	15
10		11/17/2021					CLAY (CL); wet, olive black; medium plasticity; trace woody organics.	
							<b>SILTY SAND</b> SAND WITH SILT (SP-SM); wet, olive black; fine to coarse sand; non-plastic fines; interfingers with clay inch 3 to 4 inch layers.	
20							SILT (ML); medium dense, moist, brownish black; low plasticity fines; trace woody organics.	20
							SAND (SP); moist, brownish gray; fine to coarse sand; trace to no silt. Interbed of clay, 1 to 2 inches thick.	
5							<b>SILTY SAND (SM)</b> ; wet, olive gray; fine sand; low plasticity fines.	
							<b>LOW PERMEABILITY CLAY</b> CLAY (CL); moist, olive gray; woody organics throughout.	
25							Bottom of exploration at 25 ft. bgs.	25

**Legend**

- ☐ No Soil Sample Recovery  
☒ Continuous core 1.85" ID

Water Level

▽ Water Level ATD

See Exploration Log Key for explanation of symbols

Logged by: BCC/AWP  
Approved by:**Exploration Log**  
**AB-03**

Sheet 1 of 1

**Portac - 210158****Environmental Exploration Log**

Project Address &amp; Site Specific Location

Coordinates

Exploration Number

Port of Tacoma - Parcel 15 Tacoma, WA, NW corner of the site

NA

**AB-04**

Contractor

Equipment

Sampling Method

Ground Surface Elev.

Cascade

Geoprobe 7822

Percussion hammer

25.5' (est)

Operator

Exploration Method(s)

Work Start/Completion Dates

Top of Casing Elev.

Depth to Water (Below GS)

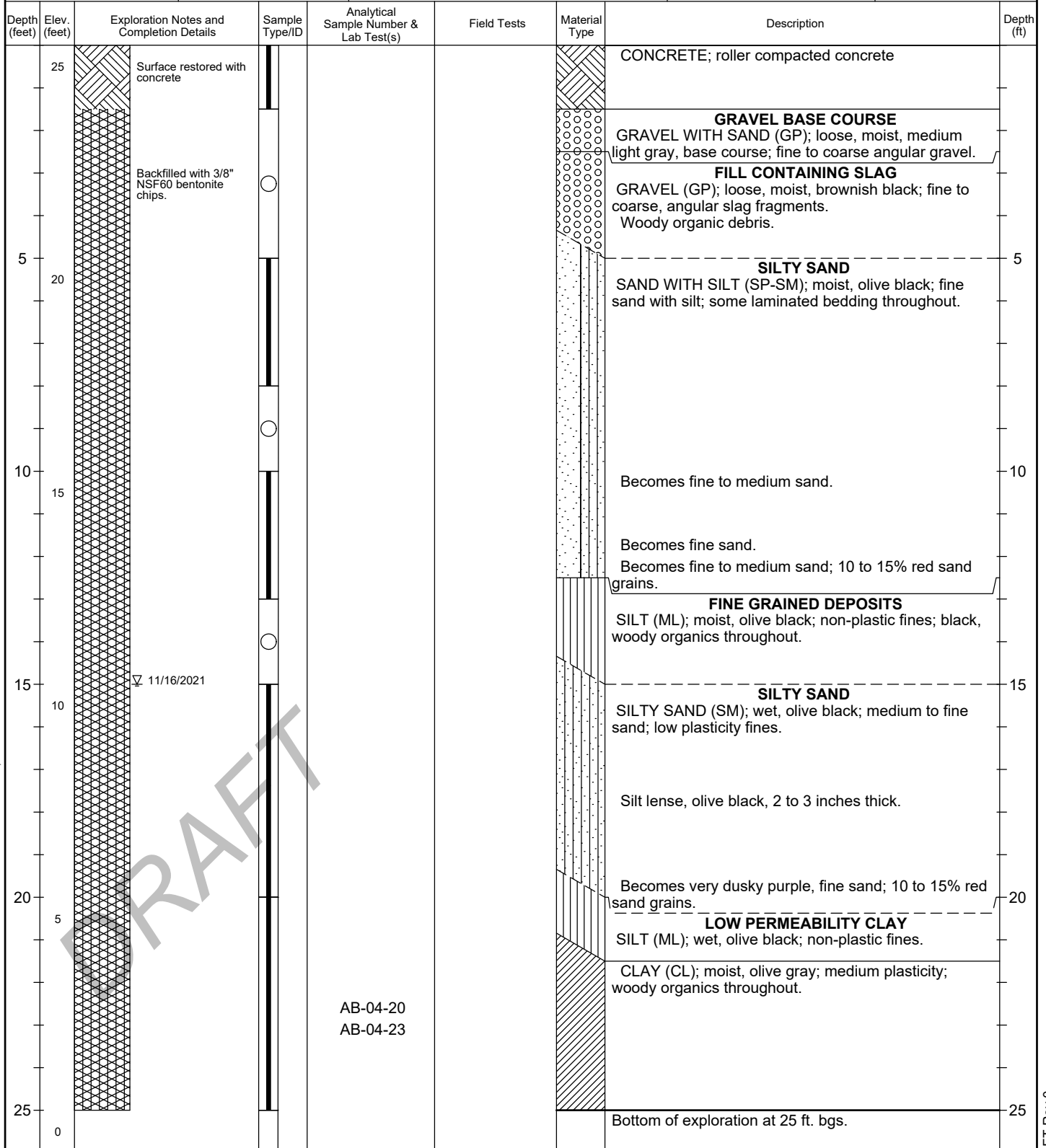
Kyle

Direct push

11/16/2021

NA

15' (ATD)

**Legend**

- No Soil Sample Recovery
- Continuous core 1.85" ID

Water Level

Water Level ATD

See Exploration Log Key for explanation of symbols

Logged by: BCC/AWP  
Approved by:**Exploration Log**  
**AB-04**

Sheet 1 of 1

**Portac - 210158**

Project Address &amp; Site Specific Location

Port of Tacoma - Parcel 15 Tacoma, WA, NW area of the site

**Environmental Exploration Log**

Coordinates

NA

Exploration Number

**AB-05**

Contractor

Cascade

Equipment

Geoprobe 7822

Sampling Method

Percussion hammer

Ground Surface Elev.

24' (est)

Operator

Kyle

Exploration Method(s)

Direct push

Work Start/Completion Dates

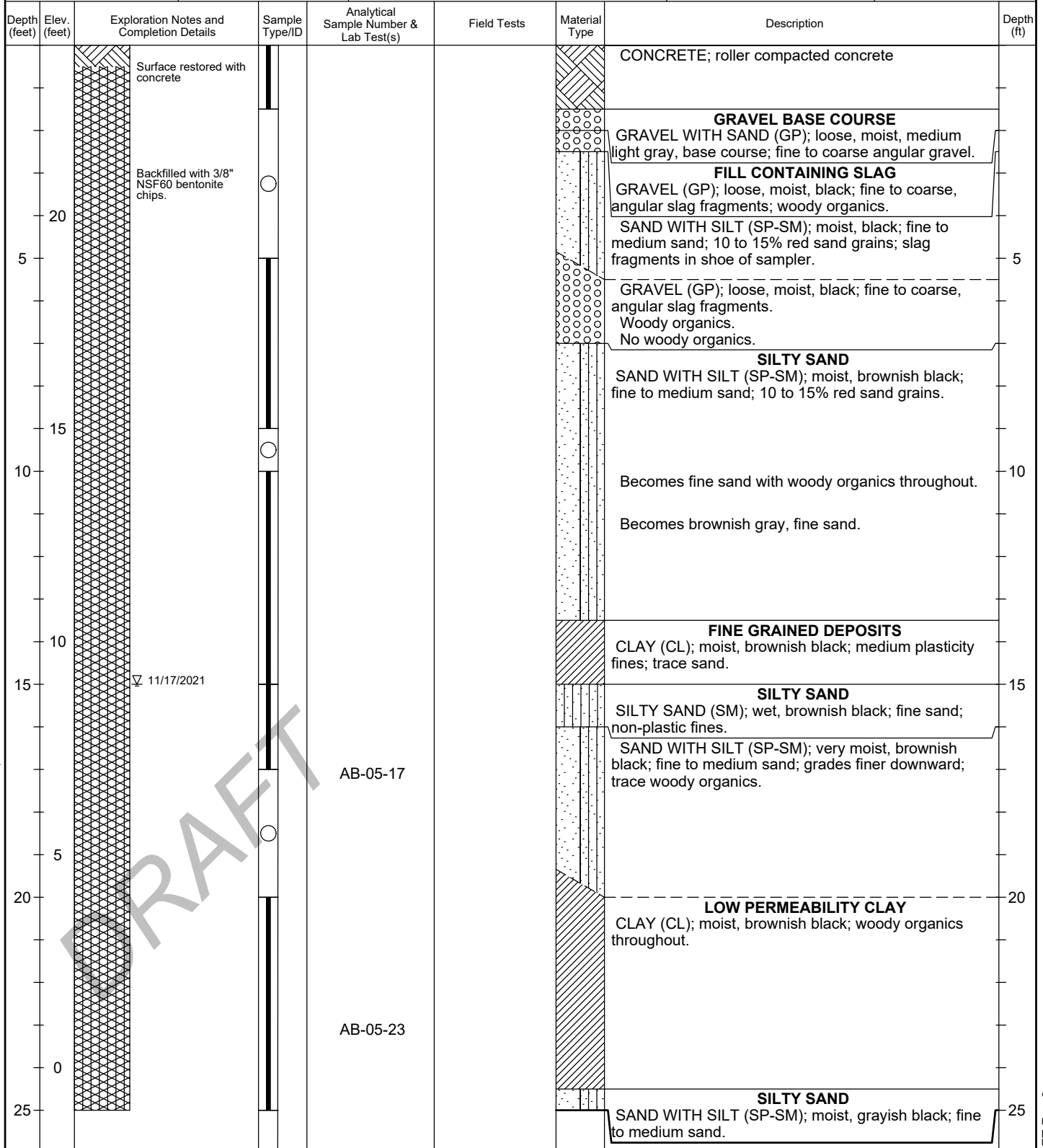
11/17/2021

Top of Casing Elev.

NA

Depth to Water (Below GS)

15' (ATD)

**Legend**

- No Soil Sample Recovery
- Continuous core 1.85" ID

Water Level

Water Level ATD

Bottom of exploration at 25 ft. bgs.  
See Exploration Log Key for explanation of symbolsLogged by: BCC/AWP  
Approved by:**Exploration Log**  
**AB-05**

Sheet 1 of 1

**Portac - 210158**

Project Address &amp; Site Specific Location

Port of Tacoma - Parcel 15 Tacoma, WA, N side of the site

**Environmental Exploration Log**

Coordinates

NA

Exploration Number

**AB-06**

Contractor

Cascade

Equipment

Geoprobe 7822

Sampling Method

Percussion hammer

Ground Surface Elev.

23' (est)

Operator

Kyle

Exploration Method(s)

Direct push

Work Start/Completion Dates

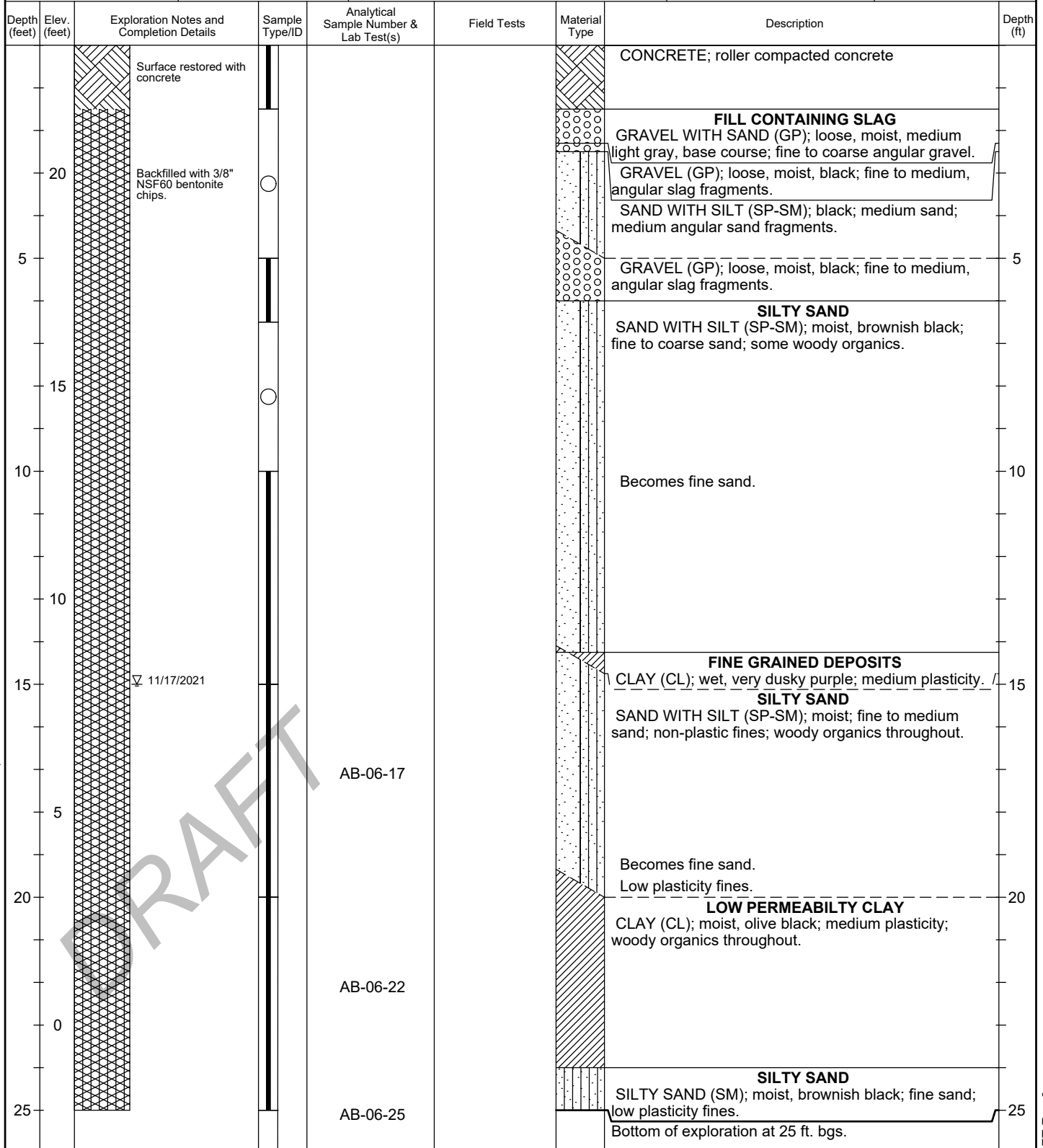
11/17/2021

Top of Casing Elev.

NA

Depth to Water (Below GS)

15' (ATD)

**Legend**

- ☐ No Soil Sample Recovery  
☒ Continuous core 1.85" ID

Water Level

▽ Water Level ATD

See Exploration Log Key for explanation of symbols

Logged by: BCC/AWP  
Approved by:**Exploration Log**  
**AB-06**

Sheet 1 of 1