

February
2025

The Arboretum
Community Newsletter

W180 N7890 Town Hall Rd
Menomonee Fall, WI 53051



SINCERI
Senior Living

February Birthdays!

Cherre G.	2/3
Thaddeus R.	2/4
Adonna A.	2/12
Gail S.	2/13
John M.	2/13
Alice J.	2/14
Joan K.	2/14
Judy J.	2/28
James W.	2/29

Meet the Team

Maggie Krueger
Executive Director

Kim Schiek
Health Services Director

Jill Pichler
Business Office Manager

Peg Dettlaff
Community Resource Director

Mally Ziegler
Resident Experience Director

Brad Chaloupka
Culinary Services Director

Carnell Mims
Maintenance Director

Nina Williams
Nurse Manager

Raven Luten
Community Care Coordinator

Claudia Burgos
Nurse Manager

Juliana Perez
Charge Nurse

Religious Programs

Rosary | Every Monday and Friday at 6:15PM

Heart of the Nation Catholic Mass | Every Sunday, 7:00AM &
9:00AM

Catholic Communion Service | February 5th & February
19th, 9:00AM

Gloria Dei Lutheran Worship Service | February 19th, 3:30PM

Grace Lutheran Service | February 18th, 1:00PM

Gloria Dei Lutheran Bible Study |
February 5th, 3:30PM

Resident Run Programs & Contacts

-Rosary | Mondays & Fridays 6:15PM |

-Sheepshead | Every Evening 6PM | Jerry M. A327

-Bunco | Tuesdays 10AM | Barb H. A136

-Knitters Circle | Thursdays 10AM | Pat K. A226

-Bridge | Thursdays 12:30PM | Tina V. A232

-Writing Club | Thursdays 5:30PM | Linda B. C361

- Perspectives on Life | Sundays 1PM | Linda B. C361

Featured Bus Trips

Lunch

Cafe Zupas- February 4th

Sawmill- February 11th

Su Casa - February 18th

Joe Mama's- February 25th

Shopping

Aldi's - February 6th

Piggly Wiggly- February 13th

Metro Market- February 20th

Walmart- February 27th

Special Trips

Mitchell Park Domes Trains-

February 19th- 9am



One Thousand Thanks!

We want to thank you for your continued trust and confidence.

In an effort to return our gratitude to you, we would like to offer thanks in the form of \$1,000 for each person you refer to us that moves in.

When you make a referral to us,
please contact
Marketing Director, Peg Dettlaff
414-253-0199.

Kringles with Chris

**Come enjoy some
Kringles every month
with Chris!
10 am Friday February
14th at the Bistro**

Memory Cafe

Enjoy light refreshments while learning about Alzheimer's and Dementia.

We will be hybrid with an online and in-person option!

Please call or email for the link for the virtual meeting.

If you plan on attending in person, it will be held in the Conference Room.

Contact Mally with any questions.

February 19th, 2024 @ 6PM

mally.ziegler@sincerisl.com
(414) 285-4772

Entertainment

Jay Isaacson
(Singing Pianist)
Friday February 14th
11am
Activity Room

Community Meetings

Town Hall
February 18th 10AM
Corner Dining Room

Dining Meeting
February 18th 3PM
Bistro

Noise concerns

Any noise concerns must be reported to the front desk.

They will be addressed by staff in a timely manner.

Please do not address concerns yourself and inform the front desk.

Activity Monthly Spotlight

Here you'll find descriptions of some of the exciting events happening this month!

Learning American Sign Language

Join our sign language class for seniors and explore the basics of American Sign Language (ASL). Connect with family and friends, enhance your social skills, and learn essential vocabulary in a relaxed, fun environment. No experience needed—just bring your curiosity!

Resident Performing Arts

In this activity, residents have the opportunity to join the Performing Arts Group and take part in creating and performing plays or performances. Whether acting, directing, or contributing behind the scenes, participants can express their creativity and showcase their talents in a supportive and collaborative environment.

Perspectives on Life

Perspectives on Life is a reflective program where residents choose a meaningful quote and share its significance to their personal journey. It provides an opportunity to reflect on life's lessons, express gratitude, and engage in meaningful conversations with others. This fosters connection, insight, and a deeper sense of community.

Fitness in Motion

This fitness class uses upbeat music from different decades to keep you moving and energized. Enjoy classic hits from the '60s, '70s, '80s, and more while improving strength, endurance, and coordination.

Race to Finish

In this fun and engaging activity, residents can compete in trivia or various games for a chance to win exciting prizes. Test your knowledge, challenge your friends, and enjoy a friendly competition in a lively, interactive environment. It's a great way to have fun and show off your skills while earning rewards!

Cribbage

Join our Cribbage program for a fun mix of strategy and socializing! Whether you're a beginner or experienced player, this classic card game offers mental stimulation and friendly competition in a relaxed setting. Come play, connect, and enjoy

Meet the Director Team



Maggie Krueger-
Executive Director



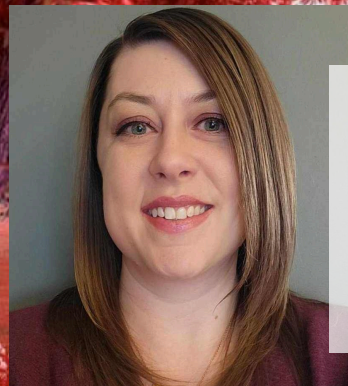
Brad
Chaloupka-
Culinary
Services
Director



Jill Pichler-
Business
Office
Manager



Peg Dettlaff-
Community
Resource
Director



Kim Schiek-
Health
Services
Director



Carnell
Mims-
Maintenance
Director



Mally
Ziegler-
Resident
Enrichment
Director

