

snapmaker | CAN Hub

QUICK START GUIDE

A150 | A250 | A350



MAKE SOMETHING WONDERFUL

Table of Contents

1 Before You Start	1
1.1 Specifications	1
1.2 Parts List	2
1.3 Used Symbols	3
1.4 Get the Screwdriver Ready	4
2 Assembly	5
3 Cable Connection	13

1 Before You Start

1.1 Specifications

Dimensions	136 width × 51 depth × 26 height (mm)
Weight	0.163 kg
Package Weight	0.7 kg
Cable Length	2000 mm
Output Ports	4

The specifications are subject to change without notice.

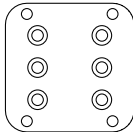
1.2 Parts List



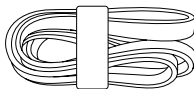
Quick Start Guide × 1



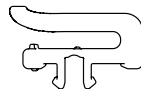
CAN Hub × 1



Conversion Plate × 2



Cable × 1



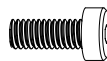
Cable Clip × 6



Sliding Nut × 4



M4 × 27 Hex Socket Head Screw (Customized) × 4



M4 × 10 Hex Socket Head Screw × 4

1.3 Used Symbols



Caution

Failure to follow this instruction might result in malfunction, damage to the machine or workpiece, or slight personal injury.



Tip

Tells you practical advice.



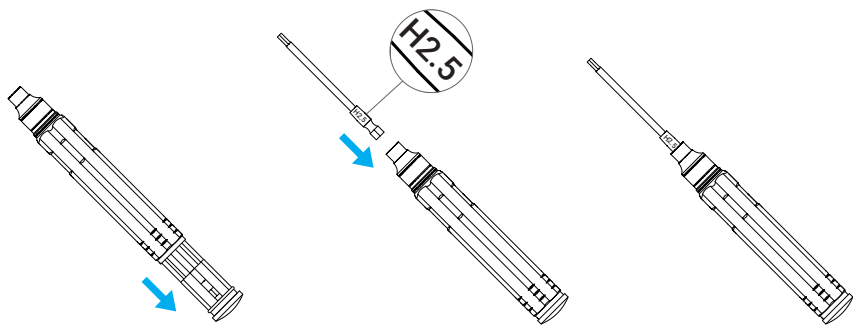
Direction

Ensure the highlighted part is facing the right way.



Do not tighten the screws when this symbol appears. Always tighten the screws when it is absent.

1.4 Get the Screwdriver Ready

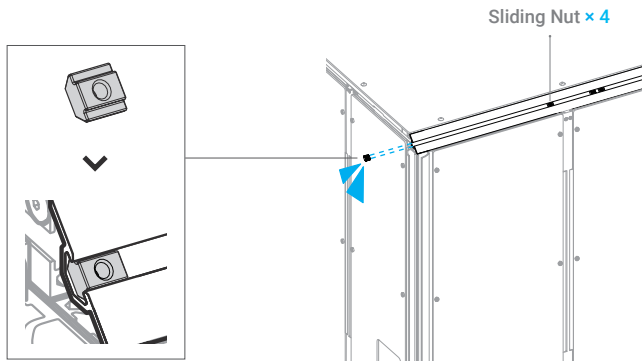


Use the H2.5 bit for machine assembly and other bits for maintenance. Before use, ensure the screw bit holder is put back into the handle.

2 Assembly

This guide takes Snapmaker 2.0 A350 as a demonstration. All steps demonstrated apply to the assembly and use of the CAN Hub on A150 and A250. Turn off the machine before assembly.

- 1 Insert the Sliding Nuts into the 48CA Beam on the right of the Enclosure.

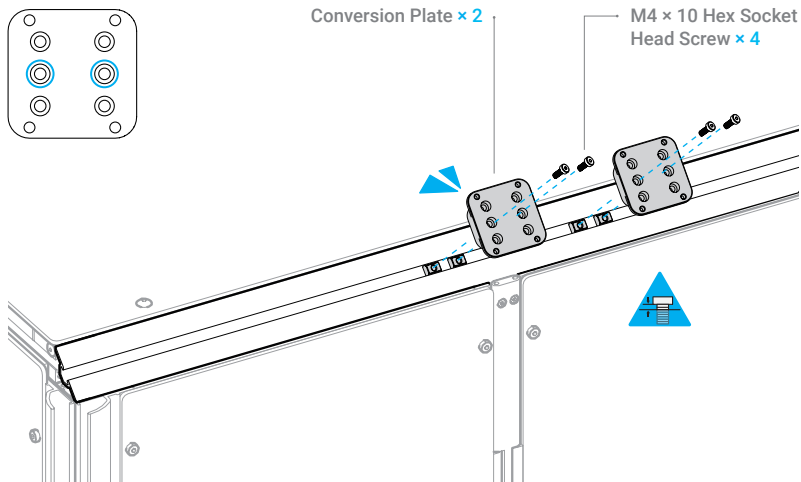


If you are using the A150 Enclosure, you can insert the Sliding Nuts into the 48CA Beam on the left of the Enclosure.

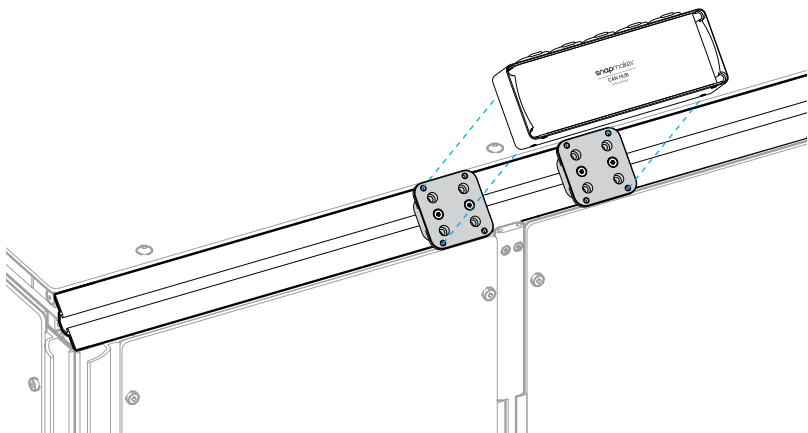


If you have already installed the Emergency Stop Button, you need to disassemble it before assembling the CAN Hub. When mounting the hub, ensure there is enough space for the installation of the Emergency Stop Button.

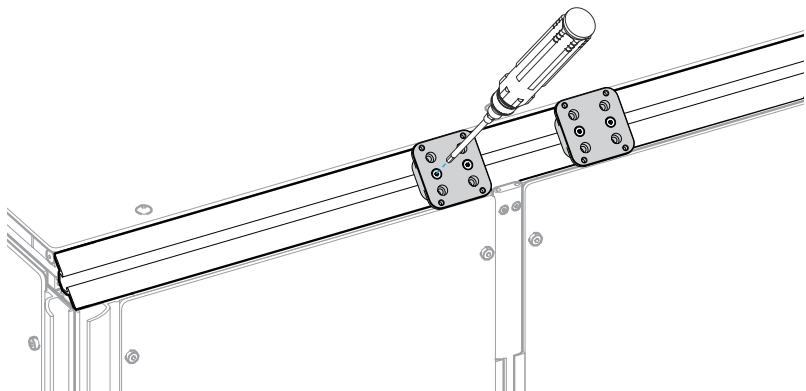
- ② Attach the Conversion Plates to the Sliding Nuts. Do not tighten the screws until Step 4.



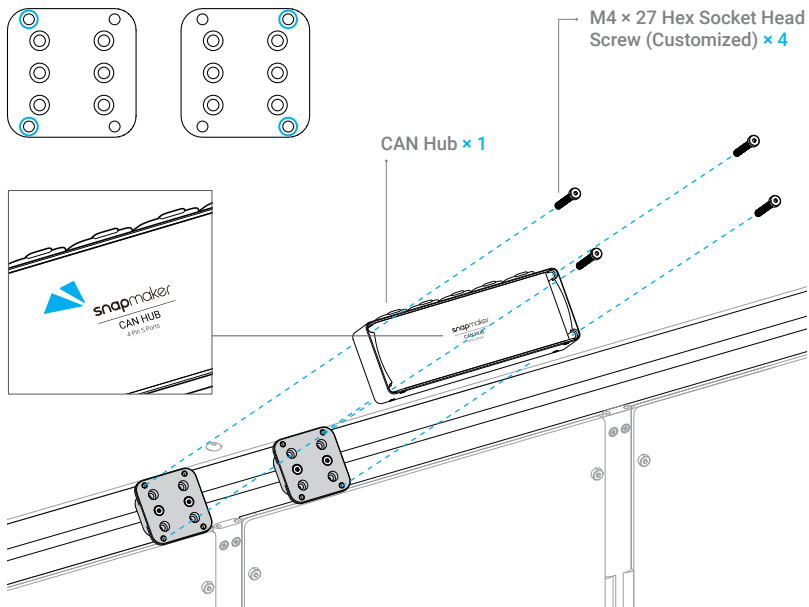
- ③ Adjust the installation position of the Conversion Plates, in accordance with where the screw holes of the CAN Hub are.



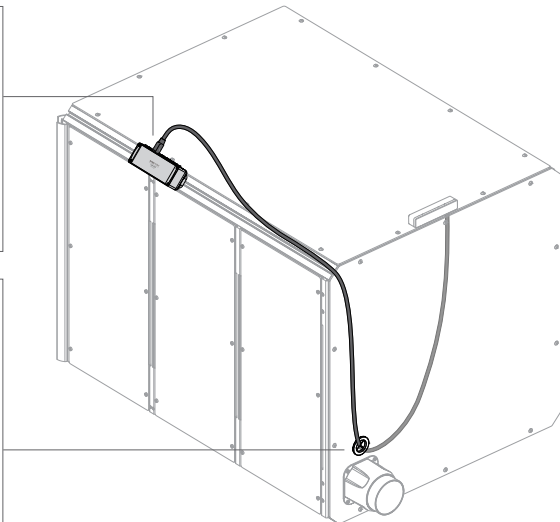
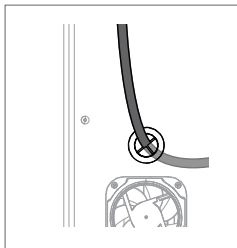
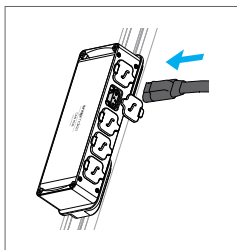
4 Tighten the screws of the Conversion Plates.



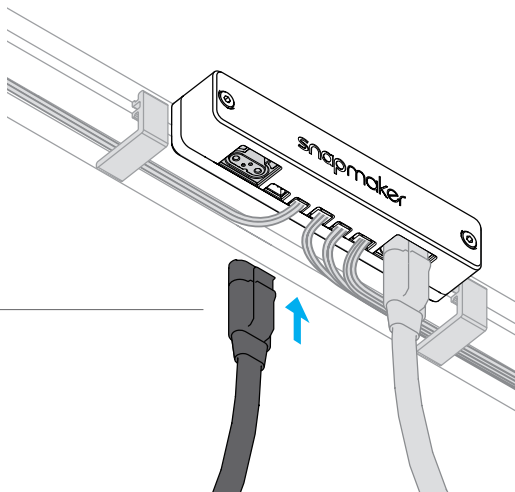
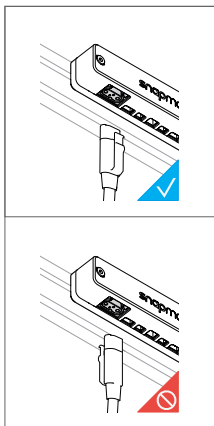
5 Attach the CAN Hub to the Conversion Plates.



- ⑥ Insert one end of the cable into any of the ports of the CAN Hub. Thread the other end of the cable through the Snap Bushing on the Back Panel.

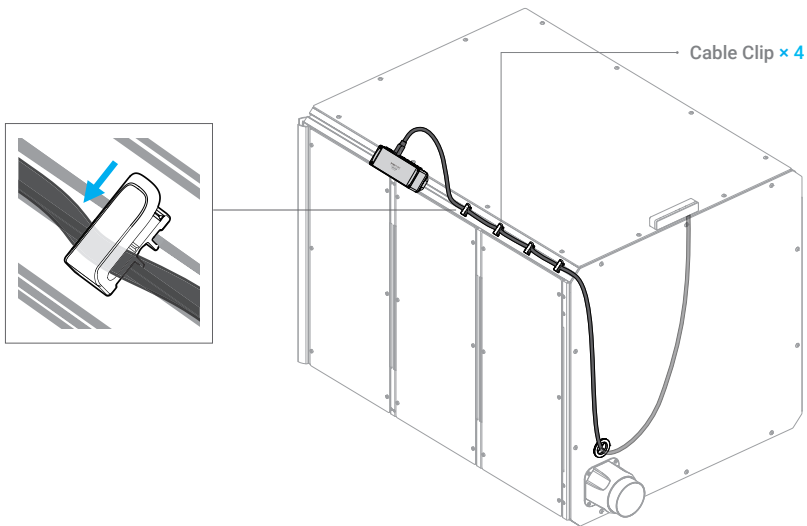


- 7 Insert the other end of the cable into either of the Expansion Ports of the Enclosure Converter.



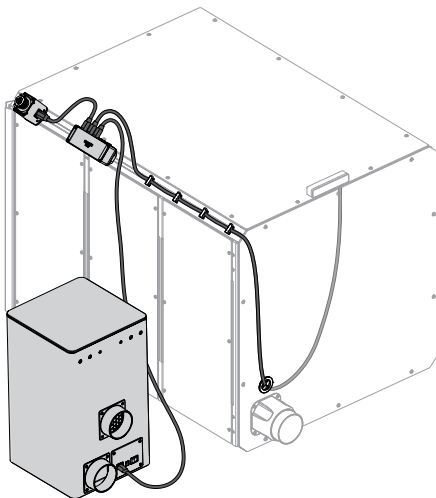
Do not connect or disconnect any cables when the machine is turned on.

- ⑧ Lock the cable with Cable Clips, and press the clips into the groove of the 48CA Beam.



3 Cable Connection

If you want to use the Emergency Stop Button and the Air Purifier at the same time, you can install the Emergency Stop Button in the position as illustrated. The ports of the CAN Hub can be used as input or output, so you can insert the cables of these two addons into any of the ports.



Original Instruction
Y.3.B.A.0042-01 V1.0.0