

4 ways to color



FLOWER BUSHES



Daisy bushes

● R300



1. Fill in the base with a pink marker

☁ RV09



2. Use a lighter pink acrylic pen to draw leaf clusters

☁ RV05



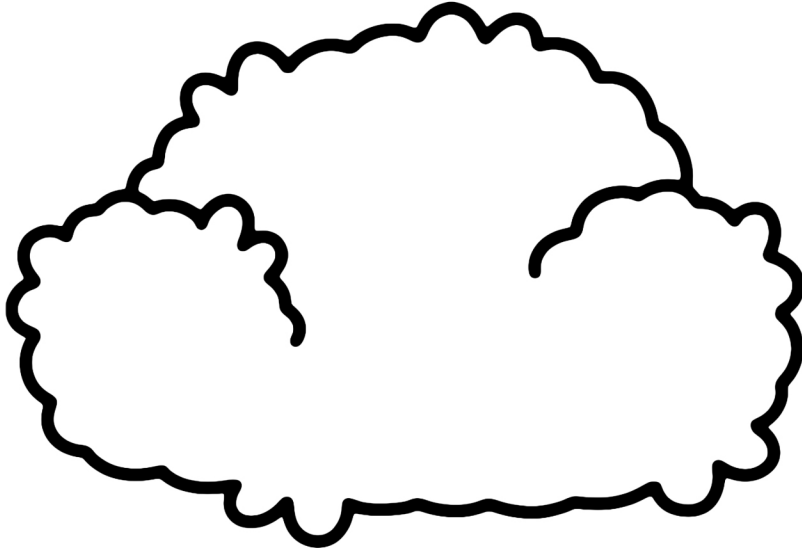
3. Use a lighter pink acrylic pen to draw leaves

☁ 101

☁ YR09



4. Add random daisies with white and yellow acrylic markers



○ _____

○ _____

○ _____

○ _____

○ _____

○ _____

○ _____

○ _____

○ _____

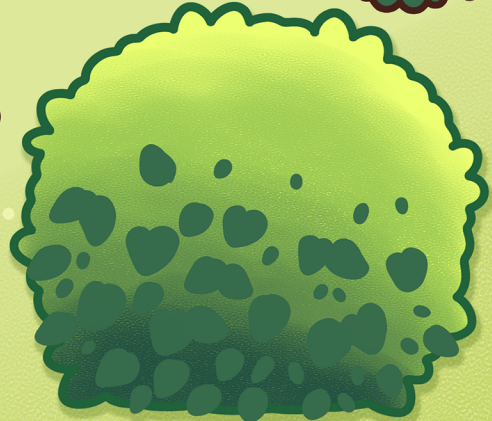
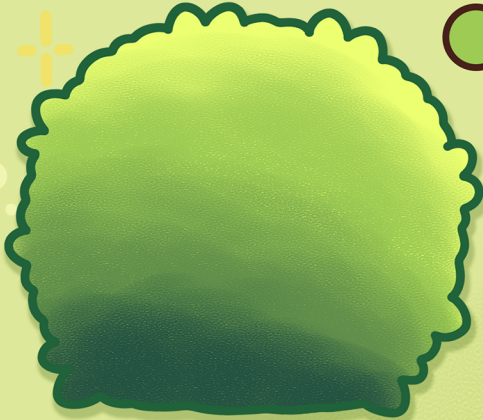
Rose bushes

● F9010

● G130

● GG9

● YG311



1. Fill in the base by blending three green shades from light to dark

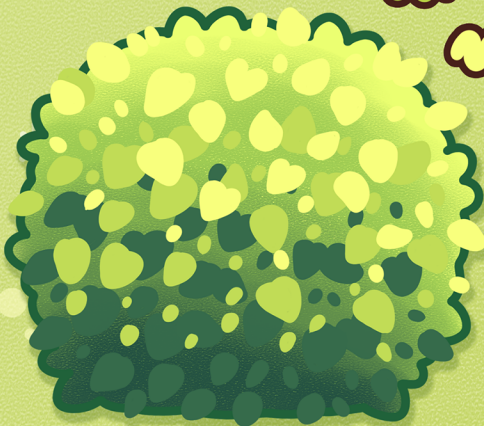
2. Use a dark green acrylic marker to draw leaves

● YG56

● YG03

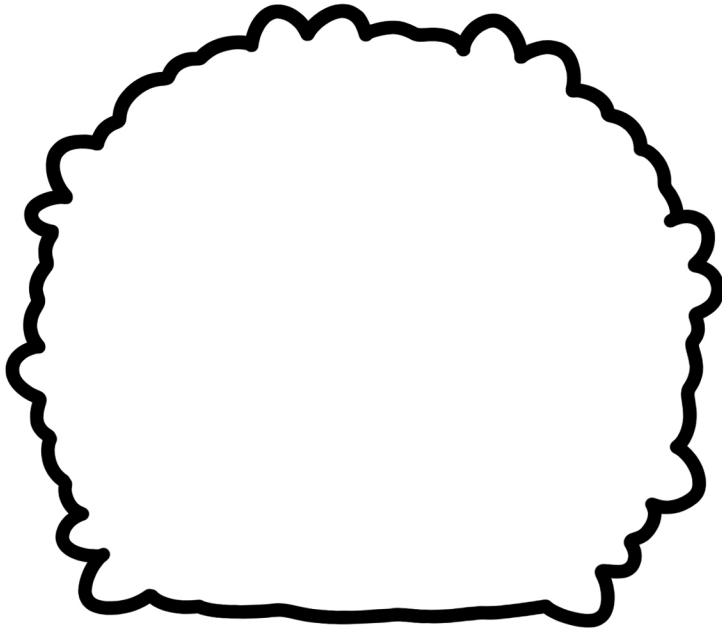
● R313

● YR07



3. Repeat step 2 with a light green acrylic marker

4. Add a few roses with dark and light red acrylic markers



○ _____

○ _____

○ _____

○ _____

○ _____

○ _____

○ _____

○ _____

○ _____

Blue flower

○ Y010

1. Fill in the base with a light yellow marker

○ B110 ○ B170

○ B190

2. Add shadows and dots with three blue shades from light to dark

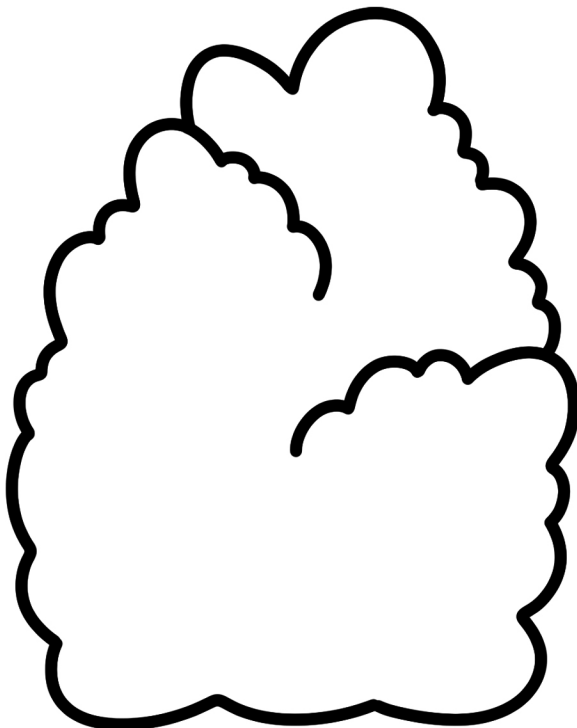
● B919

3. Use a dark blue acrylic marker to draw the stems and leaves

● YG00

● B416 ● BG93

4. Draw blue flowers with medium and light blue acrylic markers. Add highlights with a light yellow acrylic marker



○ _____

○ _____

○ _____

○ _____

○ _____

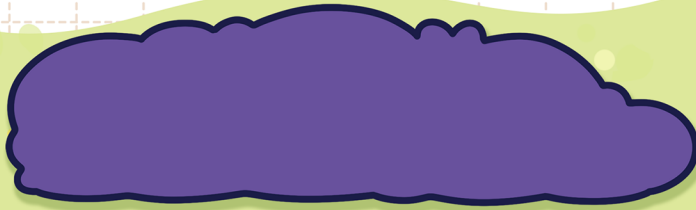
○ _____

○ _____

○ _____

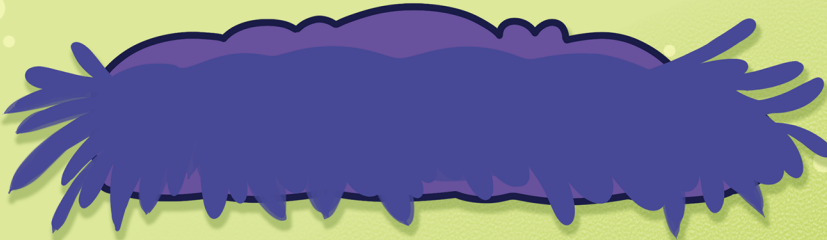
○ _____

White flower



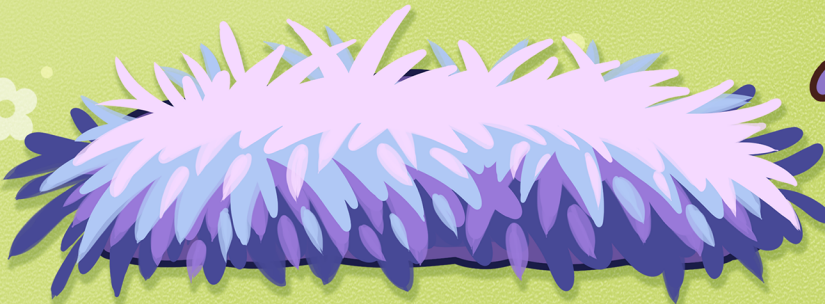
● V320

1. Fill in the base with a violet marker *



☁ BV518

2. Use a dark violet acrylic marker to shade the darkest area of the leaf clusters



☁ V014

☁ BV17

☁ V19

3. Repeat step 2 with three lighter violet shades from bottom to top *

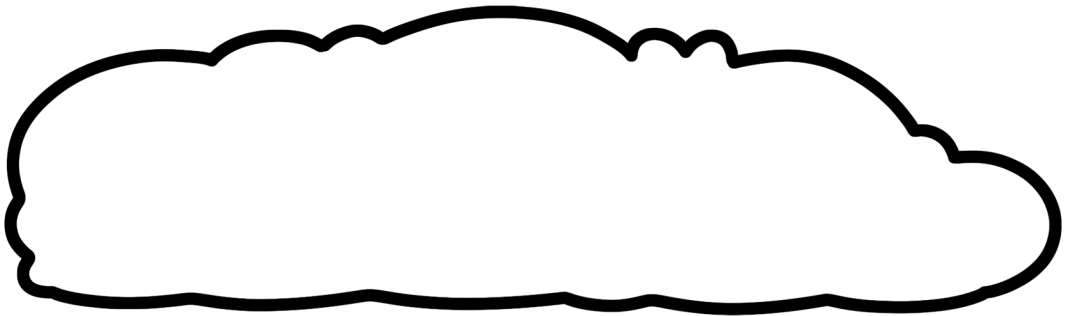


☁ 101

☁ BV518

4. Add random flowers with white and dark violet acrylic markers

southernlotus.com *



○ _____

○ _____

○ _____

○ _____

○ _____

○ _____

○ _____

○ _____

○ _____