



End-of-Year Wrap Up & Back to School Planning for SY22-23



Table of Contents:

[Curriculum Updates](#)

[Workbook Updates \(K-5\)](#)

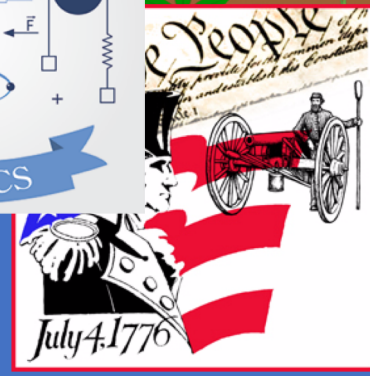
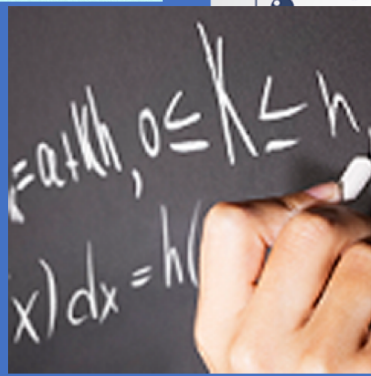
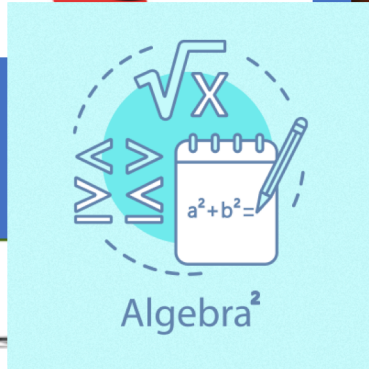
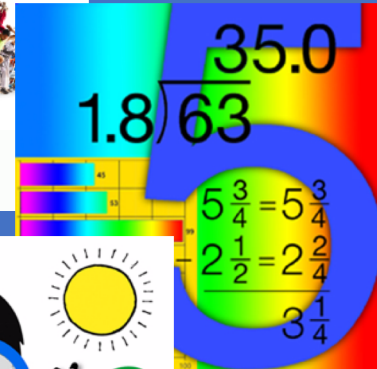
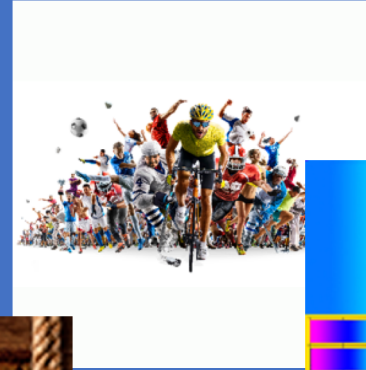
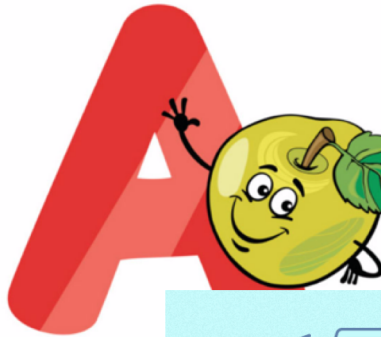
[Course Delivery for SY22-23](#)

[Platform Updates](#)

[School Year Closeout](#)

[Training and Support Options](#)

The Yearling
 The Golden Compass
 To Kill a Mockingbird
 Robinson Crusoe
 Anne of Green Gables
 Oliver Twist
 Bunnica
 A Tree Grows
 James and the Giant Peach
 The Good Earth
 The Sea Wolf
 Main Street
 Treasure Island
 A Tale of Two Cities



Curriculum Updates for SY22-23



How Significant is the Update to My Course?

Each course in the Accelerate Education catalog will fall into one of the following course update classifications for SY22-23:

No Updates	Re-Mastered Course	Modest Course Updates	New Course
There are no planned content changes to the course. We will be delivering the same version of the course that you ended with last year.	The course is being re-mastered for technical reasons only. A new course version derived from the new master will be delivered, but the course content will be the same.	There will be substantive changes made in the course content, but the overall course structure and the scope and sequence will closely resemble last year's course.	The course is a new addition to the catalog or the course is a completely new build of an existing course. The scope and sequence will look nothing like last year's course.

The following pages provide details on which courses fall into the Re-Mastered Course, Modest Course Updates, and New Course categories.

Elementary Course Changes

Course	Update Category	What's Changing
Language Arts 1	Re-Mastered Course	This course will be re-mastered for SY22-23 with no substantive content changes.
Language Arts 2	Re-Mastered Course	This course will be re-mastered for SY22-23 with no substantive content changes.
Math 1	Modest Course Updates	An updated version of this course will be released for Fall 2022. Updates include new instructional videos throughout the course with corresponding updates to lesson content and worksheet activities.
Math 3	New Course	A completely new version of Math 3 will be released for Fall 2022.
Science 1	Modest Course Updates	An updated version of this course will be released for Fall 2022. Updates include new instructional videos throughout the course with corresponding updates to lesson content and worksheet activities.
Science 2	Re-Mastered Course	This course will be re-mastered for SY22-23 with no substantive content changes.
Science 3	Re-Mastered Course	This course will be re-mastered for SY22-23 with no substantive content changes.
Social Studies 1	Modest Course Updates	An updated version of this course will be released for Fall 2022. Updates include new instructional videos throughout the course with corresponding updates to lesson content and worksheet activities.
Social Studies 2	Re-Mastered Course	This course will be re-mastered for SY22-23 with no substantive content changes.
Social Studies 3	Modest Course Updates	An updated version of this course will be released for Fall 2022. Limited updates include a replacement several modules.

Middle School Course Changes

Course	Update Category	What's Changing
MS Arts Explorations	New Course	A completely new version of this course will be released for Spring 2023 .
Language Arts 6	Modest Course Updates	This course is being remastered for SY22-23 with modest additions in the B semester.
Math 6	New Course	A completely new version of Math 6 A will be released for Fall 2022. Math 6 B is expected to release in early October 2022.
Math 7	Modest Course Updates	This course was recently re-mastered. Any partner that did not take a new copy of this course in SY21-22 should do so for SY22-23 to ensure access to the latest updates.
Science 6 - Life Science	Modest Course Updates	An updated version of this course will be available for Fall 2022. We will be replacing all of the instructional videos in this course, re-aligning assessments to lesson materials, updating authentic assessments, and improving the overall course scope & sequence.
MS World Geography	New Course	This is a new course title (one semester) that will be added to our catalog for Spring 2023 .

Note: Accelerate Education offers two versions of Middle School Science, one which reflects an integrated science curriculum and another which follows a more traditional grade level sequencing. It is our traditional **Science 6 - Life** science course which is undergoing updates for SY21-22.

Traditional Curriculum

Science 6 - Life

Science 7 - Earth & Space

Science 8 - Physical

Integrated Curriculum

Integrated Science 6

Integrated Science 7

Integrated Science 8

High School Course Changes

Course	Update Category	What's Changing
AP Calculus AB	Re-Mastered Course	This course will be re-mastered for SY22-23 with no substantive content changes.
AP Psychology	New Course	This is a new course title that will be added to our catalog for Fall 2022. Semester A will be available this summer and Semester B will be available later this Fall.
AP Spanish	New Course	This is a new course title that will be added to our catalog for Fall 2022. Semester A will be available this summer and Semester B will be available later this Fall.
Biology *	Modest Course Updates	A new version of this course will be released for Fall 2022 with new virtual laboratory activities.
Chemistry * *	New Course	A completely new version of this course will be released for Fall 2022.
Consumer Math * *	Re-Mastered Course	This course will be re-mastered for SY22-23 with no substantive content changes.
Ethnic Studies	New Course	This is a new course title (one semester) that will be added to our catalog for Spring 2023.
Financial Literacy	New Course	A new version of this course was released in January 2022.
First Aid	Re-Mastered Course	This course will be re-mastered for SY22-23 with no substantive content changes.

* Course changes will impact the standard and honors version of this title.

* * Course changes will impact all course levels (standard, honors, independent study, credit recovery) associated with this course title.

High School Course Changes

Course	Update Category	What's Changing
French 1 * *	New Course	A new version of this course will be released for Fall 2022.
French 2 * *	New Course	A new version of this course will be released for Fall 2022.
Health Careers	Re-Mastered Course	This course will be re-mastered for SY22-23 with no substantive content changes.
Physics *	Modest Course Updates	A new version of this course will be released for Fall 2022 with updated virtual laboratory activities.
Sociology * *	Modest Course Updates	A new version of this course will be released for Fall 2022.

* Course changes will impact the standard and honors version of this title.

* * Course changes will impact all course levels (standard, honors, independent study, credit recovery) associated with this course title.

High School CTE Elective Additions



Available January 2022:

- Architectural Design
- Building Maintenance Technologies
- Cybersecurity
- Early Childhood Education
- Principles of Architecture
- Project Management

Available for SY22-23:

- Adobe Premiere Pro Certification
- Microsoft Excel Certification
- Microsoft PowerPoint Certification
- Microsoft Word Certification
- Networking
- Social Media Business Marketing

Other Curriculum Updates

Retired Courses

The following course titles will be retired for SY22-23. Students enrolled in these courses with a start date prior to August 1st may complete their courses, but no new enrollments will be accepted with a start date after August 1, 2022.

- Digital Photography
- Explorations in Arts Careers
- Film & Television
- Photojournalism

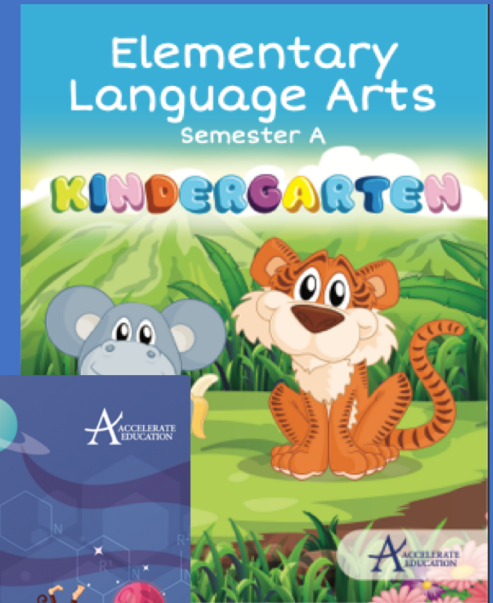
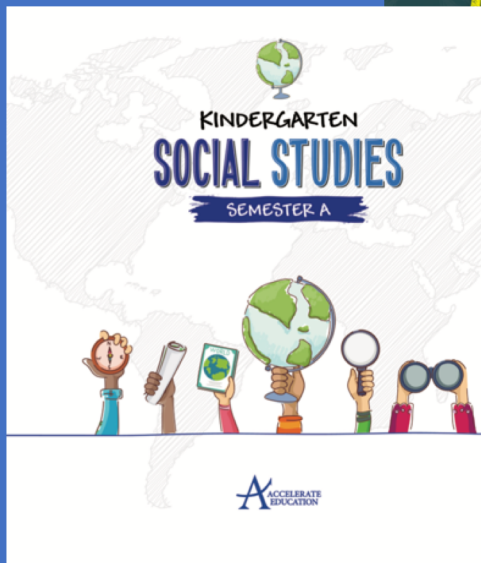
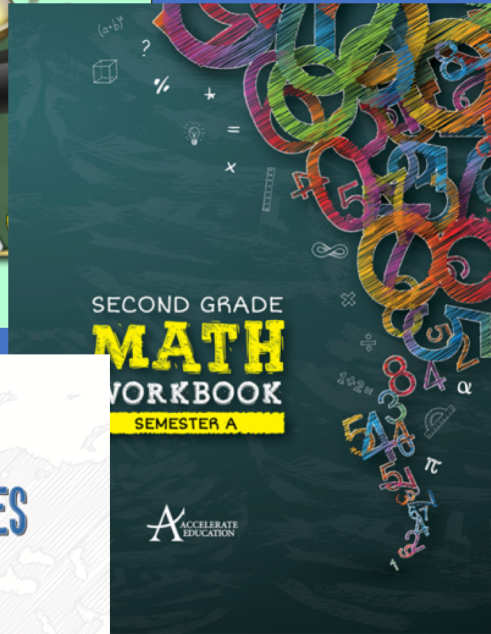


Other Updates

- We will continue efforts to add additional teacher resources in the course teacher's guide for K-5 courses to support the delivery of synchronous learning sessions with students.
- We have ongoing copy edit and link checking projects underway to monitor and improve overall curriculum quality across all grade levels.

Embedded Audio Recorder in K-5 ELA

In Summer 2022 we will be embarking upon an effort to remove the embedded audio recorder tool from our K-5 English Language Arts courses. This legacy tool is limited in terms of the length of recordings that students are able to complete, and the native audio recorder available in our LMS provides a more robust and integrated solution for students.



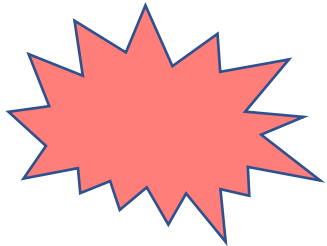
Workbook Updates for SY22-23



Big Changes in Workbook Fulfillment!



- Accelerate Education will be working with a new fulfillment partner for SY22-23.
- We will be retiring our current order form and access to the Workbooks Online portal.
- While details about the new order process will be forthcoming at a later date, some enhancements this change will introduce for SY22-23 include:
 - A more efficient and scalable back-end infrastructure to ensure ALL orders – even those placed during the peak back-to-school period – are consistently delivered within 10 business days.
 - Improved workbook print quality with gray-scaled design.
 - Optional email shipping confirmations sent directly to families with shipment tracking information.
 - Ability to select grade-level workbook bundles for ease of ordering.





Other General Workbook Updates

- A unique ISBN has been assigned to each workbook and will appear on the back cover of the workbook. There are a number of ISBN updates for SY22-23. **Please ensure when placing workbook orders that you are using the correct ISBN for SY22-23.**
- If you elect to retain a deprecated course version for SY22-23, print workbooks that align to your course may no longer be available.
- We will begin fulfilling workbook orders for SY22-23 beginning July 1st. Customers may purchase both A and/or B workbooks at that time.



Kindergarten

Workbook Title	Print ISBN	New Course for SY22-23	New Workbook for SY22-23	Notes
Language Arts K A	978-1-63916-012-9	No	No	
Language Arts K B	978-1-63916-013-6	No	No	
Math K A	978-1-63916-096-9	No	Yes	Minor workbook changes only.
Math K B	978-1-63916-122-5	No	Yes	Minor workbook changes only.
Science K A	978-1-63916-036-5	No	No	
Science K B	978-1-63916-037-2	No	No	
Social Studies K A	978-1-63916-024-2	No	No	
Social Studies K B	978-1-63916-025-9	No	No	



1st Grade

Workbook Title	Print ISBN	New Course for SY22-23	New Workbook for SY22-23	Notes
Language Arts 1 A	978-1-63916-014-3	Yes	No	
Language Arts 1 B	978-1-63916-015-0	Yes	No	
Math 1 A	978-1-63916-097-6	Yes	Yes	Older workbook versions will not be compatible with this course.
Math 1 B	978-1-63916-112-6	Yes	Yes	Older workbook versions will not be compatible with this course.
Science 1 A	978-1-63916-108-9	Yes	Yes	Older workbook versions will not be compatible with this course.
Science 1 B	978-1-63916-120-1	Yes	Yes	Older workbook versions will not be compatible with this course.
Social Studies 1 A	978-1-63916-107-2	Yes	Yes	Older workbook versions will not be compatible with this course.
Social Studies 1 B	978-1-63916-117-1	Yes	Yes	Older workbook versions will not be compatible with this course.

* Any customer electing to retain a prior course version for SY22-23 should inquire about availability of legacy workbooks.



2nd Grade

Workbook Title	Print ISBN	New Course for SY22-23	New Workbook for SY22-23	Notes
Language Arts 2 A	978-1-63916-101-0	Yes	Yes	Minor workbook changes only.
Language Arts 2 B	978-1-63916-121-8	Yes	Yes	Minor workbook changes only.
Math 2 A	978-1-63916-098-3	No	Yes	Minor workbook changes only.
Math 2 B	978-1-63916-123-2	No	Yes	Minor workbook changes only.
Science 2 A	978-1-63916-104-1	Yes	Yes	Minor workbook changes only.
Science 2 B	978-1-63916-125-6	Yes	Yes	Minor workbook changes only.
Social Studies 2 A	978-1-63916-028-0	No	No	
Social Studies 2 B	978-1-63916-029-7	No	No	

3rd Grade

Workbook Title	Print ISBN	New Course for SY22-23	New Workbook for SY22-23	Notes
Language Arts 3 A	978-1-63916-102-7	No	Yes	Minor workbook changes only.
Language Arts 3 B	978-1-63916-019-8	No	No	
Math 3 A	978-1-63916-109-6	Yes	Yes	Older workbook versions will not be compatible with this course.
Math 3 B	978-1-63916-116-4	Yes	Yes	Older workbook versions will not be compatible with this course.
Science 3 A	978-1-63916-105-8	Yes	Yes	Minor workbook changes only.
Science 3 B	978-1-63916-126-3	Yes	Yes	Minor workbook changes only.
Social Studies 3 A	978-1-63916-118-8	Yes	Yes	Older workbook versions will not be compatible with this course.
Social Studies 3 B	978-1-63916-119-5	Yes	Yes	Older workbook versions will not be compatible with this course.

* Any customer electing to retain a prior course version for SY22-23 should inquire about availability of legacy workbooks.



4th Grade

Workbook Title	Print ISBN	New Course for SY22-23	New Workbook for SY22-23	Notes
Language Arts 4 A	978-1-63916-020-4	No	No	
Language Arts 4 B	978-1-63916-021-1	No	No	
Math 4 A	978-1-63916-099-0	No	Yes	Minor workbook changes only.
Math 4 B	978-1-63916-009-9	No	No	
Science 4 A	978-1-63916-044-0	No	No	
Science 4 B	978-1-63916-045-7	No	No	
Social Studies 4 A	978-1-63916-032-7	No	No	
Social Studies 4 B	978-1-63916-033-4	No	No	



5th Grade

Workbook Title	Print ISBN	New Course for SY22-23	New Workbook for SY22-23	Notes
Language Arts 5 A	978-1-63916-022-8	No	No	
Language Arts 5 B	978-1-63916-023-5	No	No	
Math 5 A	978-1-63916-100-3	No	Yes	Minor workbook changes only.
Math 5 B	978-1-63916-124-9	No	Yes	Minor workbook changes only.
Science 5 A	978-1-63916-106-5	No	Yes	Minor workbook changes only.
Science 5 B	978-1-63916-047-1	No	No	
Social Studies 5 A	978-1-63916-103-4	No	Yes	Minor workbook changes only.
Social Studies 5 B	978-1-63916-127-0	No	Yes	Minor workbook changes only.



Course Delivery & Setup for SY22-23



Course Delivery on Buzz

- Customers hosted on Accelerate Education's instance of Buzz have the option of :
 1. Taking new course copies for *all courses*, OR
 2. Selectively taking new course copies for only those titles that are being re-released for SY22-23. [Programs may prefer to retain the working course master already in their domain, especially if teachers have customized the curriculum for their students. In no instance should programs re-use enrollable sections from year to year.]
- Domain administrators will be provided subscription access to pull down course copies beginning in early June (access to courses will be restricted based on customer licenses).
- Accelerate's SY22-23 [Course Creation Template](#) will assist admins in identifying the appropriate course codes that should be used to copy courses into their domain.
- [1:1 support](#) will be available as needed for any admins needing additional assistance with this process.



Tip: If your program needs to begin configuring courses in your SIS and/or rostering students before new courses are released in June, we have a solution that will allow you to generate Buzz course codes in advance of course readiness. Please set up a 1:1 admin session to discuss options.



Course Delivery on Buzz

- The Global Assessment Modifier (or GAM) tool is a proprietary tool developed by Accelerate Education to facilitate bulk changes across all domain courses. It was initially designed to accommodate updates to assessment settings but has been expanded to support bulk changes to other activity and course settings. If there are global changes you would like to apply across your courses, we may be able to assist. Please consult our [Global Item Modifier](#) guide for more details.
- If there are other course customizations you would like to make in bulk that are not addressed in this guide, please let us know. We may be able to assist you with a more efficient way to affect these changes using the Buzz API.



Tip: If your program makes substantial course customizations that you want to retain from year to year, talk to us about setting up a separate content domain where these customizations can be better managed.

Course Delivery on Canvas



- All customers are encouraged to take new course cartridges for SY22-23 so that courses delivered to students reflect all course enhancements and fixes made in our course masters this year.
- Your unique LTI External Provider Tool settings will be renewed for SY22-23; please make sure all courses are configured for your unique key and secret as legacy combinations will be retired and will no longer work beginning this Fall.
- Once course cartridges are installed on a customer's instance of Canvas, Accelerate Education cannot apply fixes to assignments, discussions, journals, or computer-scored assessments (quizzes and exams). Any needed fixes will be addressed as follows:
 - Any in-year course changes will be centrally logged.
 - Each logged entry will include instructions on how customers can apply the fix in live courses; a link to an updated cartridge and/or QTI (assessment) file will also be provided.
 - A summary of any updates by course will be sent to customers each Thursday.

Course Delivery on Schoology



- Beginning in SY22-23, **Accelerate Education will deliver most K – 12 courses directly in Schoology.**
 - Course lesson pages will remain in the Accelerate CMS and will be rendered via LTI links within Schoology.
 - All course settings, course activities, and course assessments will be built using Schoology's native toolset.
 - Teachers will have the option to modify or customize courses using a variety of readily available Schoology features.
- If your program previously used Accelerate courses in Schoology using thin common cartridge delivery (aka Publish Anywhere), please contact us to discuss streamlining your course delivery for SY22-23.
- The Curriculum Support process for Schoology will mirror that which is in place today for Canvas users.

Publish Anywhere Course Delivery



- If you are using Accelerate Education courses via the Buzz Publish Anywhere feature, we will be delivering new course package files for you to import for SY22-23.
- Information on where to access those .imscc files will be communicated separately.
- Your unique LTI External Provider Tool settings will remain unchanged.
- If you need a refresher on setting up courses via Publish Anywhere, these support articles may help:

Support Articles

[Publish Anywhere teacher view](#)

[Publish Anywhere student view](#)

[Supported activity types](#)

[How to import course content](#)



Platform Updates for SY22-23

Platform Updates

- A limited Speechstream toolbar has been enabled for all course assessments in Buzz. This toolbar, which was previously only available within lesson pages, allows students to use the Speechstream read aloud, screen masking, and text enlargement tools while taking assessments. Note: dictionary and translation supports remain available within lesson content, but are disabled in assessments to preserve academic integrity.
- Accessing Accelerate Reports is now easier than ever! Accelerate Reports for Buzz, accessible via the top left main menu in Buzz, enable administrators and teachers to access reports on student performance and attendance data. Users who are logged in to Buzz can now access these tools seamlessly without an additional login.
- While there are always ongoing enhancements to the Buzz platform, we do not anticipate any significant changes in overall functionality. We encourage users to subscribe to the Buzz [“What’s New”](#) and [“Coming Soon”](#) features to stay abreast of weekly updates this summer.



! Watch for upcoming changes to our Time Based Performance Report!
This reporting tool, which allows users to quickly identify and isolate trends in student academic performance, will be improved and even easier to use for SY22-23! **!**



Customizing Your Domain

As you consider what worked well and what didn't this past year, please give thought to any additional platform features you may want to implement for SY22-23, such as:

- Enabling SSO for your students.
- Implementing rostering via OneRoster SIS Sync.
- Customizing your login page.
- Personalizing your domain menu options.
- Modifying your domain structure.
- Establishing local course masters.

Our client service team can assist you with getting these and other features enabled and set up. See Training & Support Options for information on requesting a [1:1 support session](#).



Outbound Notifications

Accelerate Education offers four types of Outbound Notifications that can be selectively configured for your domain.

- 1. New Enrollment Notifications** – alerts students when a new course enrollment is added and alerts teachers when a student has been placed in one of their courses.
- 2. Student Progress Reports** – weekly summary report disseminated on Sundays; provides observers with a snapshot of student course progress and pacing.
- 3. Final Grade Reports** – summary report issued after teacher records a final grade in Buzz.
- 4. Grade Out Exceptions** – notification issued to teacher alerting them that a student was unable to be graded out due to one or more outstanding ungraded assignments.

If you are not currently using these notifications but would like to enable some/all of them for SY22-23, please contact our support desk for assistance.

Private label versions of these notifications are not available at this time.

Power Tools



Administrators who are looking for additional tools to help simplify and automate day-to-day activities may consider adding Power Tools to their domain. These apps, which integrate directly into the Buzz menu, have been created by an independent third party. **They are not developed or directly supported by Accelerate or Buzz....**but we think you'll like them!

A screenshot of the Accelerate Education Power Tools interface. The interface has a dark blue header with the text "Accelerate Education" and a search icon. Below the header, there's a section titled "Power Tools (1.8.2.55)". The main area contains several tool cards: "Recent Reports" (red), "Enrollment Report" (purple), "Enrollments by Teacher" (purple), "Student Daily Activity" (light blue), "Grade Details" (light blue), "Bulk Edit" (yellow), "Excuse Student" (orange), "Combined Gradebook" (light blue), and "Teacher Grading Queues" (light blue). Each card has a title, a brief description, and a preview of the tool's output. For example, the "Recent Reports" card shows a table of reports with columns for Report, Date, and Format. The "Enrollment Report" card shows a table of enrollment data. The "Student Daily Activity" card shows a table of student activity. The "Grade Details" card shows a summary of grade details with progress indicators. The "Bulk Edit" card shows a form for updating multiple activities. The "Excuse Student" card shows a form for excusing a student. The "Combined Gradebook" card shows a diagram of a gradebook. The "Teacher Grading Queues" card shows a diagram of grading queues.



School Year Closeout



Closing Out SY21-22

There are a number of tasks that should be completed to close out the current school year.

1. Pull any final reports necessary to transfer final grades to your SIS.
2. Ensure all enrollments are updated to a completed or withdrawn status.
3. Inactivate student accounts for any users not returning next year.
4. Archive courses that are no longer needed.
5. Update domain blackout dates for next year.

Click [here](#) for a checklist of semester end activities for administrators.

Click [here](#) for a checklist of semester end activities for teachers.



Archiving Courses

All programs will have access to a “Retired Courses” subdomain where courses that are no longer being used can be retired. This will simplify your course management for next year and reduce the risk of enrollment errors.

If you are ready to archive courses and do not have access to a “Retired Courses” subdomain for your program, please contact our Support Desk to request one. Once you have identified the courses that you would like retired, you may submit a list of course IDs to our [support desk](#) and we will take care of that for you.



Training & Support Options for SY22-23



Training & Support Options

This summer we will be rolling out a new and improved Training & Professional Development website which will make it even easier for you to access up-to-date information, resources, and job aids to support your team throughout the year.

Visit our [Webinar](#) page to access timely webinars and training sessions to support your staff through year-end transition activities.

- Live and on-demand sessions are available for administrators and teachers.
- Sign-ups for Fall training opportunities are now open for registration!

If you would prefer 1:1 support to assist you with planning for the year-end transition, please feel free to schedule a drop-in session with a member of our client service team. We are standing by and ready to assist!

- To register for an available session, go to the [Administrator](#) section of our Training & Professional Development site and click on the sign-up link under **Need Help?**
- If there is not an available timeslot that works for you, please submit a support ticket (<https://support.accelerate.education/new>) and we will follow up with you to schedule an alternate time.

Support Resources

Audience: **All**

URL: <https://support.accelerate.education/home/>

Purpose: Submit support tickets requesting assistance on any matter and/or to access technical support resources.

Accelerate
Education
Support for
Everyone

Audience: **Administrators and Teachers**

URL: <https://trainingsupport.accelerate.education>

Purpose: Resources, training material, FAQs, and tools to assist administrators and teachers with the day-to-day operations of a program

Training &
Professional
Development
for Teachers
and Admins

Agilix (Buzz)
Support
Center for
Teachers and
Admins

Audience: **Administrators and Teachers**

URL: <https://support.agilix.com/>

Purpose: Detailed end user documentation on all aspects of the Buzz platform.

Learning
Coach
Resources for
Parents

Audience: **Learning Coaches, Parents**

URL: <https://learningcoach.accelerate.education>

Purpose: Information, resources, and best practices to assist learning coaches in effectively supporting their online students.