

Back to School

SY24-25



Curriculum Development Initiatives



Catalog Changes At-A-Glance



SY24-25



Elementary School Catalog

- Language Arts 5
- Science K
- Science 1
- Science 2
- Social Studies 5

Middle School Catalog

- Intro to World Languages
- Language Arts 6
- Science 8: Physical Science
- Social Studies 8

High School Catalog

- Algebra 1 (Standard, Honors, Credit Recovery)
- AP Physics 1
- Beginning Piano
- Earth Science (Standard, Honors, Credit Recovery)
- French 2 (Standard, Credit Recovery)
- German 1 (Standard, Credit Recovery)
- Health: Living Your Best Life
- Health: Mental Health & Well-Being
- Health: Sexuality & Gender
- Personal Leadership
- Physics (Standard, Honors, Credit Recovery)

Science



SY24-25

Science 8: Physical Science

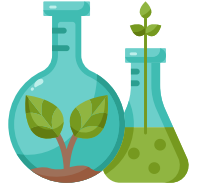
Over the last two years, Accelerate has released updated versions of Science 6: Life Science and Science 7: Earth & Space Science. This year, Accelerate continues the redesign of our core Middle School sciences with the release of a new **Science 8: Physical Science** course for SY24-25.

The new **Science 8: Physical Science** course will include updated course videos and interactive lesson activities throughout.



Science

SY24-25



Earth Science

Earth Science Honors

Earth Science Credit Recovery

Accelerate Education will be delivering an updated **Earth Science, Earth Science Honors, and Earth Science Credit Recovery** courses for SY24-25. The newly redesigned courses will include updated lessons with additional instruction and scaffolding around key earth science concepts.

Earth Science Credit Recovery will be further enhanced with video-based lesson delivery to help drive student understanding and provide added support for students who may struggle with reading comprehension.

Science



SY24-25

AP Physics 1



The College Board has announced substantive changes to the AP Physics 1 Course Framework effective with SY24-25. As a result of these changes, Accelerate Education will be retiring AP Physics 1 and replacing it with a brand new course that fully aligns to the revised AP framework.

The new **AP Physics 1** will be delivered in two phases. Semester A will be available on or around June 1st, and Semester B will be available in November.

For more information on the revised framework, please see the official [College Board communication](#) on this topic.

Science

SY24-25



Science K

Science 1

Science 2

Physics (Standard, Honors, Credit Recovery)



Accelerate is updating core science courses to more explicitly address the 3-D learning model advocated by Next Generation Science Standards (NGSS), as well as recently adopted Pennsylvania Science, Technology & Engineering, Environmental Literacy & Sustainability (STEELS) Standards. These changes will be rolled out to all core science courses over the next two years.

The first phase of this project will entail updates to **Science K, Science 1, Science 2**, and all levels of high school **Physics**. All of these courses will be re-released for SY24-25.

Math



SY24-25

$$a(b+c)=ab+ac$$

Algebra 1

Algebra 1 Honors

Algebra 1 Credit Recovery

Accelerate Education will be delivering an updated **Algebra 1**, **Algebra 1 Honors**, and **Algebra 1 Credit Recovery** courses for SY24-25. The newly redesigned courses will include updated lessons with additional instruction and scaffolding around key algebraic concepts.

Algebra 1 Credit Recovery will be further enhanced with video-based lesson delivery to help drive student understanding and provide added support for students who may struggle with reading comprehension.

Social Studies

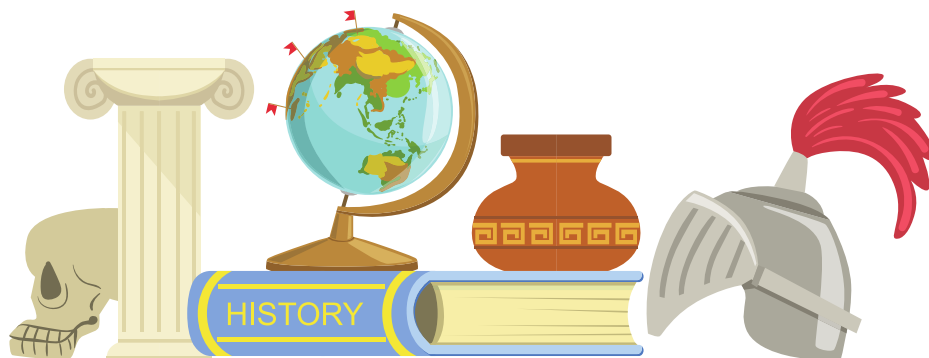
SY24-25



Social Studies 5 Social Studies 8

Accelerate Education will be releasing two updated Social Studies courses for SY24-25: **Social Studies 5** and **Social Studies 8**. Both courses will include updated instructional videos, interactive elements, and robust lesson content throughout.

Accelerate will also be publishing new workbooks to accompany the A and B sections of **Social Studies 5**.



Language Arts

SY24-25



Language Arts 5



Accelerate Education will be releasing an updated **Language Arts 5** course for SY24-25. This new course will include updated course videos, interactive course elements, and robust lesson content throughout.

Accelerate will also be publishing new workbooks to accompany the A and B sections of this course.

Language Arts

SY24-25



Language Arts 6

Accelerate has received feedback from a number of schools that while they appreciate having integrated novel studies embedded within course lessons, it can be challenging in the event the school wants to select an alternate novel. To lend support and provide more options to teachers, Accelerate will be making modest updates to **Language Arts 6** for SY24-25 so that teachers may choose either The Giver or The City of Ember as one of the integrated novel studies.

The two content modules associated with the alternate novel will be added as hidden content items in the course so that teachers will simply need to unhide the modules to make the content available to students.

World Languages



SY24-25

German 1

German 1 Credit Recovery

French 2

French 2 Credit Recovery



Accelerate Education is developing a new introductory **German 1** course for SY24-25. The course, which will be geared towards students in grades 9-12, will reflect best practices identified by the American Council on the Teaching of Foreign Languages (ACTFL).

Accelerate will also be releasing an updated **French 2** course for SY24-25. Last year, Accelerate published updates to the B portion of this course to eliminate any supplemental resources and improve direct instruction. This year, similar updates will be made to the A portion of the course to enhance the uniformity of the student experience.



World Languages

SY24-25



Middle School Intro to World Languages

Accelerate Education is developing a new **Middle School Intro to World Languages** course for SY24-25.

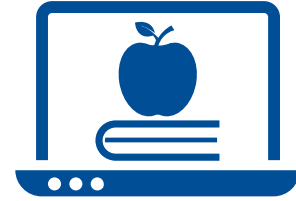
In this one semester course, middle school students will have an introduction to three different world languages – French, Spanish, and German. In each of these languages, students will learn the alphabet, the pronunciation and spelling of basic high frequency vocabulary, and essential conversational phrases, all of which are all basic building blocks for long-term fluency. Through engaging lessons, interactive exercises, and cultural insights, this course will not only introduce students to the languages but also acquaint them with the rich cultures where the languages are spoken.

*Hola, halo
Bonjour*



Health

SY24-25



Health: Living Your Best Life

Health: Mental Health & Well-Being

Health: Sexuality & Gender

To address changes in Health education requirements across states, and to provide schools with greater flexibility on how and when sensitive health topics are presented to students, Accelerate will be releasing three new, one-semester high school Health courses for SY24-25. Collectively, these courses will replace the full year Health course in Accelerate's high school catalog (that course will be retired effective SY24-25).

Schools will have the option to deliver the new Health courses as individual courses, or they may use the lesson content to create their own tailored health curriculum.

Health

SY24-25



Topics by Course

Living Your Best Life

- Dimensions of good health
- Nutrition
- Elements of physical fitness
- Infectious and noninfectious diseases
- Substance use and abuse
- Environmental health
- Personal safety

Mental Health & Well-Being

- Healthy relationships
- Managing stress
- Neurodiversity
- Mental health & mental illness
- Violence
- Death and dying

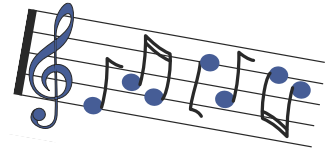
Sexuality and Gender

- Human development
- Gender, sex, and human sexuality
- Male and female reproductive systems
- Abstinence and contraception
- Sexually transmitted infections
- Pregnancy and childbirth
- Parenting

Electives



SY24-25



Beginning Piano

Beginning Piano is a new high school music elective that introduces students to the piano. Students will learn about basic music theory, they will learn about the parts of the piano and the placement of notes on the keyboard, and they will learn and perform a varied repertoire of music on a piano.

This is a performing arts elective. Students must have regular access to a piano or keyboard in order to take this course.



Electives

SY24-25



Personal Leadership

Personal Leadership is a new high school elective that focuses on social skills. Social skills are an important tool students need in order to build relationship and communication skills.

Topics in this course include:

- Social skills for healthy & supportive relationships
- Responsible decision making
- How emotions, thoughts, and values influence behavior
- Different perspectives
- Empathizing with others