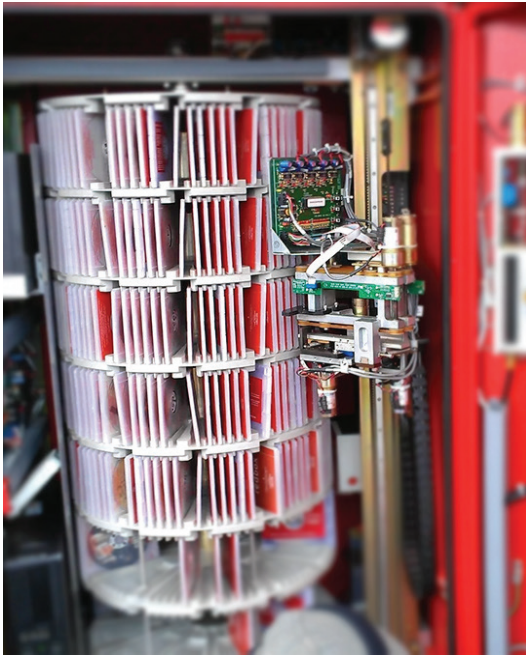


CODE READER & SCAN ENGINE 8200



CR8211 & CR8212



CR8200

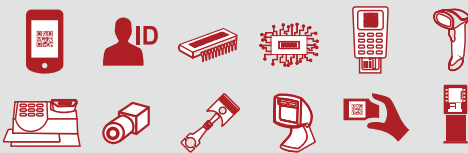


CR8221 & CR8222

Get More From Your OEM Components, with Code

- Imager Only or Imager with Decode Options
- Ultra fast microprocessor platform with world-class decoding platform
- Fast boot to start reading right away
- Extremely low power consumption for efficiency in battery applications
- Bright LED aiming mechanism
- Compact size fits any application
- Simple to setup and configure
- Built-in TTL RS232 or USB interface

Applications



Features at a Glance



The New Standard in OME Barcode Scanning

The CR8200 is the next generation of Code's patented, high performance, miniature barcode imaging engine. Innovative in its design, size and decode capability, the CR8200 delivers best-in-class high performance 2D imaging that can be added to the smallest of devices. With rapid, first-pass read rates the CR8200 effortlessly decodes 1D, 2D, postal and direct part mark barcodes printed on a variety of surfaces in a variety of conditions.

For integration versatility, choose the compact form factor that works best for your product design - imager with integrated decode board, or imager with software decoder that can be integrated into your existing processing platform.

The CR8200 draws significantly less current and transitions in and out of its low power state faster than any other imager-based scan engine. These two factors are critical when integrating the engine into OEM devices. Enhanced power management from the imager facilitates longer battery life for mobile devices and lowers overall operational costs.

With flexible integration options and unmatched decoding capabilities, the CR8200 makes a powerful addition to your operation.



Physical Characteristics

Imager-only Dimensions	Without Tabs: 0.81" W x 0.53" D x 0.47" H (20.50 mm W x 13.39 mm D x 11.90 mm H) With Tabs: 1.24" W x 0.53" D x 0.47" H (31.60 mm W x 13.39 mm D x 11.90 mm H)
Imager with Decode Board Dimensions	CR821x without tabs: 0.90" W x 1.08" D x 0.50" H (22.80 mm W x 27.53 mm D x 12.70 mm H) CR821x with tabs: 1.24" W x 1.08" D x 0.50" H (31.60 mm W x 27.53 mm D x 12.70 mm H) CR822x without tabs: 0.81" W x 0.65" D x 0.47" H (20.50 mm W x 16.46 mm D x 11.90 mm H) CR822x with tabs: 1.24" W x 0.65" D x 0.47" H (31.60 mm W x 16.46 mm D x 11.90 mm H)
Imager-only Weights	CR821x 0.35 oz. (10 g) CR822x 0.14 oz. (4 g)

User Environment

Operating Temps.	-20° to 55° C / -4° to 131° F
Storage Temps.	-30° to 65° C / -22° to 149° F
Humidity	5% to 95% non-condensing
Decode Capability	1D: BC412, Codabar, Code 11, Code 32, Code 39, Code 93, Code 128, IATA 2 of 5, Interleaved 2 of 5, GS1 DataBar, Hong Kong 2 of 5, Matrix 2 of 5, MSI Plessey, NEC 2 of 5, Pharmacode, Plessey, Straight 2 of 5, Telepen, Trioptic, UPC/EAN/JAN Stacked 1D: Codablock F, Code 49, GS1 Composite (CC-A/CC-B/CC-C), MicroPDF, PDF417 2D: Aztec Code, Data Matrix, Han Xin, Maxicode, Micro QR Code, QR Code Proprietary 2D: GoCode® (Optional License Required) Postal Codes: Australian, Canadian, Intelligent Mail, Japanese, KIX Code, Korean, Planet, Post-net, UK Royal Mail, UPU ID-tags

Performance Characteristics

Field of View	Standard Lens: 51° horizontal by 39.4° vertical Wide Angle Lens: 66° horizontal by 50° vertical
Focal Point	Standard Lens: Approximately 130 mm Wide Angle Lens: Approximately 100 mm
Sensor	CMOS 1.2 Megapixel monochrome
Optical Resolution	1280 x 960
Pitch	± 65° (from front to back)
Skew	± 60° (side-to-side)
Rotational Tolerance	± 180°
Symbol Contrast	15% minimum reflectance difference
Target Beam	Single, blue targeting bar
Ambient Light Immunity	Sunlight: Up to 9,000ft-candles/96,890 lux
Shock	Withstands multiple drops of 6' (1.8 Meters) to concrete)
Power Requirements	CR8212: 3.3V to 5.0V CR8222: 3.3V CR82x1: 5.0V Reader @ 5vdc (mA): Maximum=300 mA; Idle=1 mA; Sleep= 0.5 mA
Memory Capacity	1MB NOR Flash, 16MB RAM

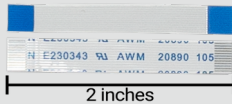
Typical Working Ranges

Note: All samples were high quality barcodes and were read along a physical center line at a 10° angle. Default AGC settings were used. Accuracy = ± -10%

Test Barcode	Standard Lens Min & Max	Wide Angle Lens Min & Max
7.5 mil Code 39	2.0" (50 mm) - 9.6" (245 mm)	0.98" (25 mm) - 7.08" (180 mm)
10.5 mil GS1 DataBar	1.4" (35 mm) - 8.9" (225 mm)	0.98" (25 mm) - 7.48" (190 mm)
13 mil UPC	1.6" (40 mm) - 14.6" (370 mm)	0.98" (25 mm) - 10.23" (260 mm)
5.8 mil PDF417	3.3" (85 mm) - 6.1" (155 mm)	0.98" (25 mm) - 5.03" (128 mm)
6.7 mil PDF417	2.6" (65 mm) - 6.9" (175 mm)	0.98" (25 mm) - 5.51" (140 mm)
5 mil Data Matrix	3.0" (75 mm) - 3.5" (90 mm)	0.98" (25 mm) - 3.54" (90 mm)
6.3 mil Data Matrix	2.8" (70 mm) - 5.3" (135 mm)	0.98" (25 mm) - 4.33" (110 mm)

Accessories

- Custom Mounting Brackets available upon request
- Multiple Length Ribbon Cables (see more below)
 - 2.0" (50 mm)
 - 6.0" (150 mm)
 - 12.0" (300 mm)



CRA-C800



CRA-C801



CRA-C802

