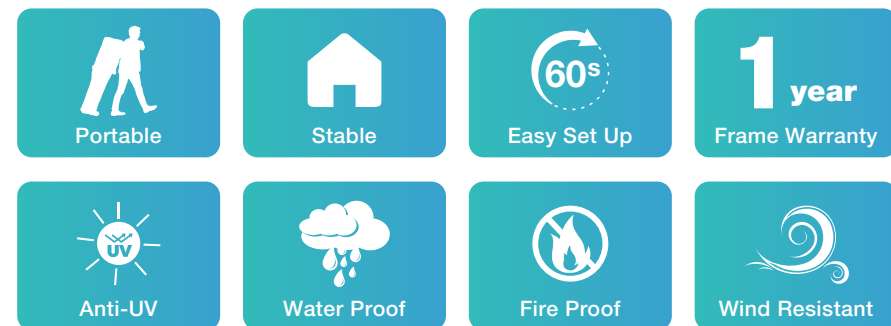
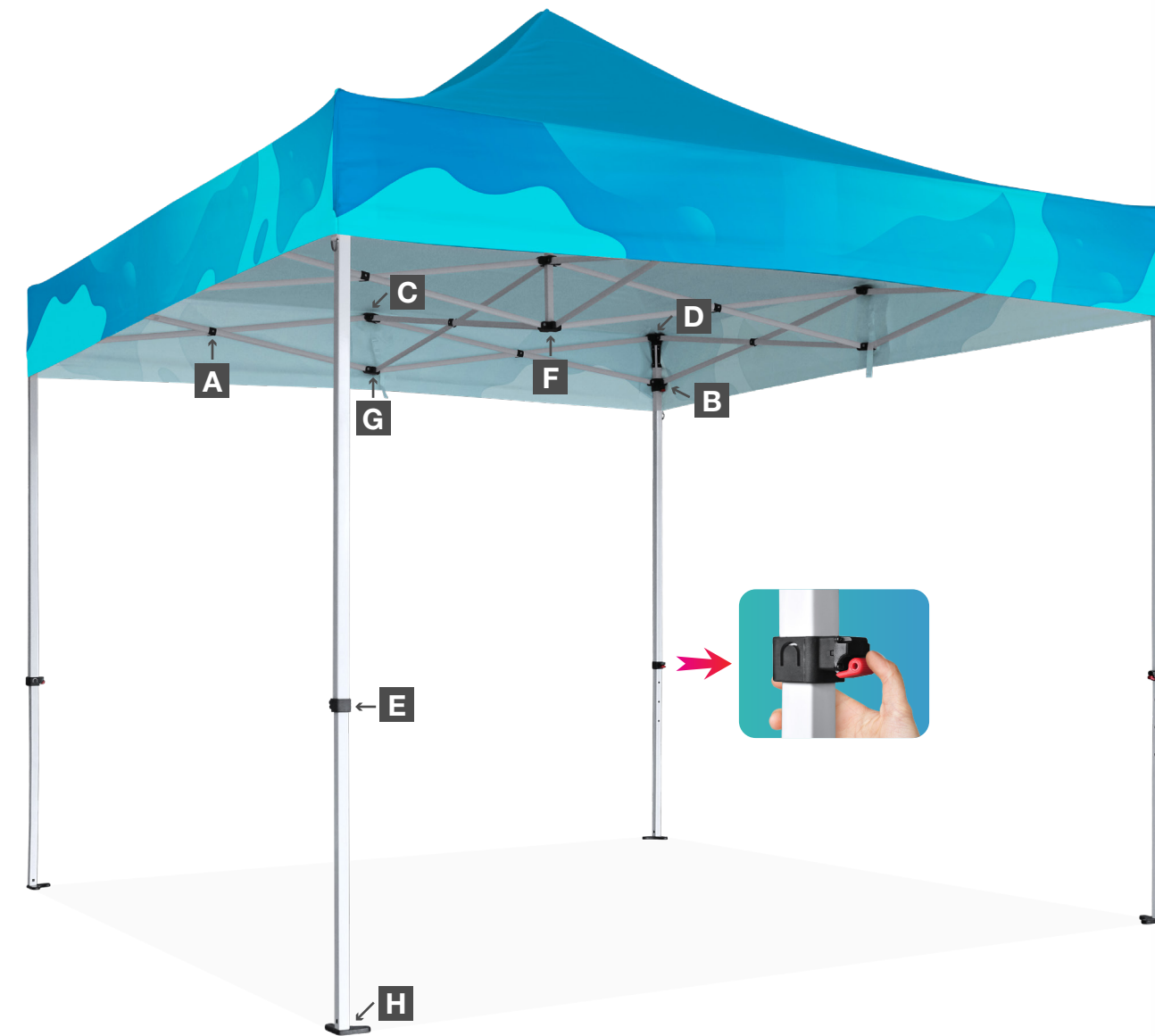


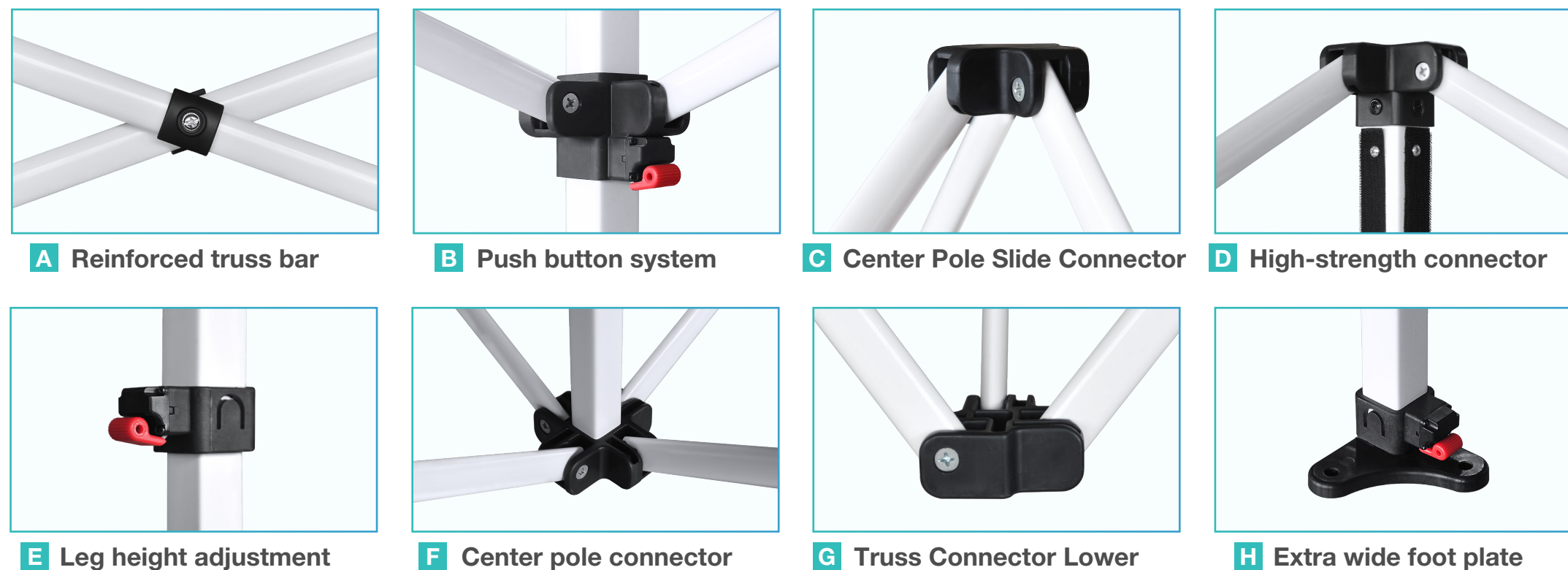
» Y5 Commercial Steel



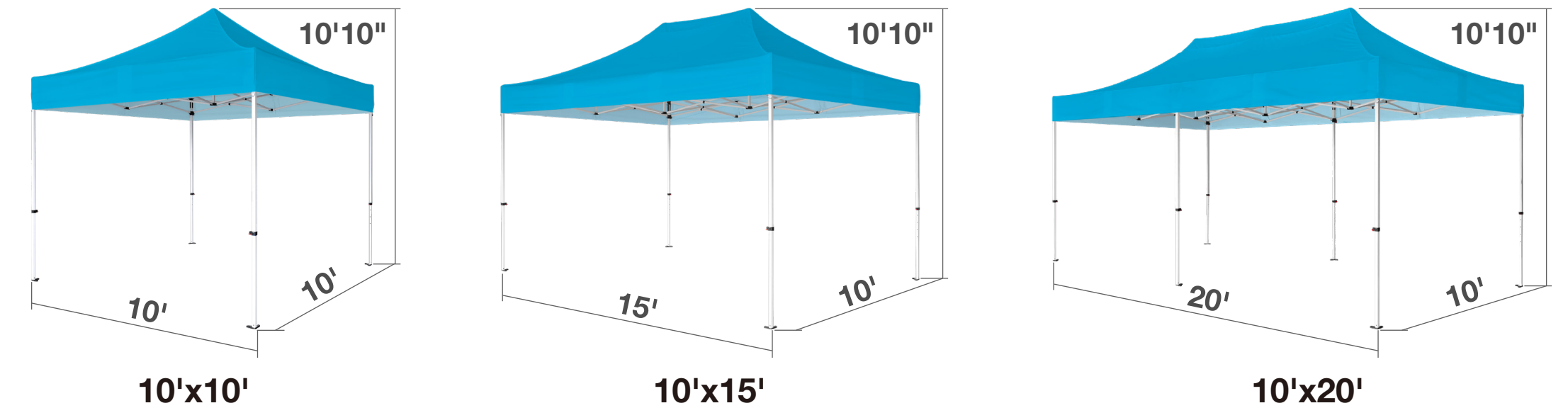
- 600D PU coated polyester, 425GSM Matte coated PVC fabric.
- Water Resistant, Fire Retardant, UPF 50+.
- Wind resistance up to 20 MPH.
- Industrial-grade steel frame, stainless steel bolts.
- Solid weight (44lbs) for reliable stability.
- 1.25" Square leg diameter and 0.03" thick tubing.
- 3 sizes available, height adjustment in 5 positions..
- 1-year warranty for frames and fabrics.



Frame Structure:

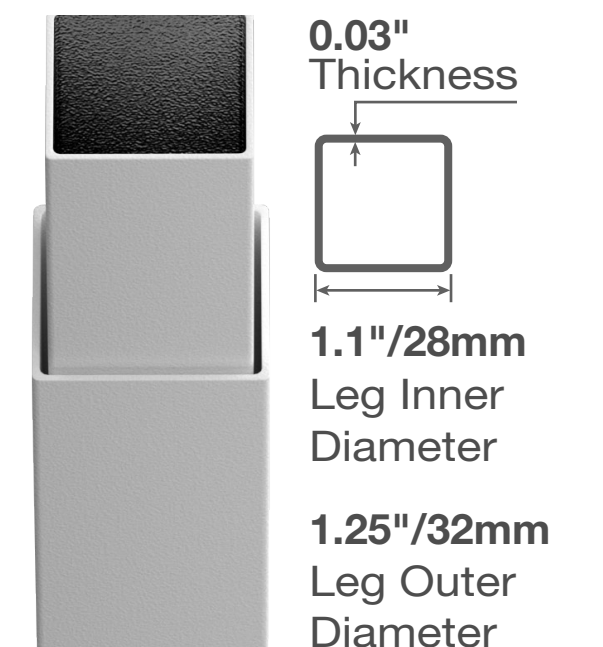


Specifications:



Size			
10' x 10'		10' x 15'	10' x 20'
Frame Material	Economic Grade Steel		
Peak Height	10'10" (3.28m)		
Clearance Height			
5'1" / 6' / 6'4" / 6'7" / 6'11" (1.56m/1.83m / 1.92m / 2.01m/2.1m)			
Frame Weight (lb)			
43.43 lb		55.78 lb	76.94 lb
Out Leg	Square 1.25" (32mm), 0.03" (0.75mm) gauge		
Truss Bar	0.95"(24mm) x 0.47"(12mm) x 0.03"(0.75mm)		
Truss Bar Structure	Elliptic type		
Fabric			
600D Polyester with PU Coating / 425 GSM PVC Fabric with Matte Coating			
Fabric Function	Waterproof, CPAI-84 Fire Retardant, UV Protection		
Bracket Connectors	Nylon		
Nuts & Bolts	Steel With Zinc Coating		
Foot Plate	Nylon		
Height Adjuster	Push Button		
Printing Method	Dye Sublimation / Digital Printing		
Warranty	1 year		

Frame Structure



Reinforced Truss Bar

