



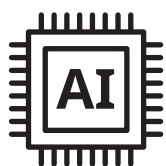
AVERMEDIA AI FUSION KIT

Conversational AI Edition
Multimodal LLM deployment

Overview

The AVerMedia AI Fusion Kit – Conversational AI Edition is a high-fidelity video and audio input kit that streams directly into AI models, tailored for LLM and Conversational AI developers. It delivers precision, reliability, and seamless integration for multimodal AI applications. Whether you're building conversational agents or rapidly prototyping, this all-in-one solution ensures AI models receive inputs accurately, efficiently, and consistently. Optimized for speech AI and vision inputs, it empowers developers to build more natural, interactive, and responsive AI systems. The kit also supports NVIDIA Jetson AI Lab tutorials, enabling users to leverage official resources for faster deployment.

Key Benefits



Ready-to-Run AI Performance

NVIDIA Jetson pre-activated for powerful LLM/VLM inference at the edge.



Precision Multimodal Input

High-fidelity video and audio capture to power multimodal AI.



Reliable & Stable

Industrial-grade hardware designed for long-term, uninterrupted development.



Developer - Friendly Integration

Combine AVerMedia's three devices for seamless compatibility and complete technical supports.

Advantages

Multimodal LLM/SLM deployment

Voice and Vision Inputs, Seamlessly Integrated for AI

Application-ready for fast prototyping & deployment

Developers requiring high-quality, synchronized audio-video input

Fusion Kit 1: AGX Orin

D315AOB-2 Box PC + High-Resolution Camera + High SNR Speakerphone



Fusion Kit 2: Orin NX

D133SOXB Box PC with Super Mode + High-Resolution Camera + High SNR Speakerphone



D315AOB-2 Box PC	D133SOXB Box PC with Super Mode
NVIDIA Module Compatibility	
Jetson AGX Orin 32GB	Jetson Orin NX 16GB
Computing Power	
Up to 200 TOPS	Up to 157 TOPS
Display Output	
1 × HDMI 2.0	1 x HDMI 2.0
USB Ports	
<ul style="list-style-type: none"> • 2 x USB 2.0 Type-A • 2 x USB 3.2 Type-A 	2x USB 3.2 Type-A
Storage	
<ul style="list-style-type: none"> • 64GB eMMC by default with mSD card slot for storage expansion • 256G SSD installed in box PC 	256G SSD installed in box PC
Dimension (W x D x H)	
181.5 x 137 x 88 mm	93 x 81.2 x 81.9 mm

Common Components



High-Resolution Camera

Capturing high-quality video data facilitating inference workload under VLM

- **Type:** USB 3.0, 4K UHD
- **Max Frame Rate:** 3840×2160 @ 30fps / 1920×1080 @ 60fps
- **Field of View:** Diagonal 94°
- **Image Resolution:** 8 Megapixels
- **Dimensions (W × D × H):** 130 × 52.6 × 29 mm



High SNR Speakerphone

360° omnidirectional voice capture with AI noise reduction to enhance VLM inference

- **Connect Type:** USB-A to USB-C Cable
- **Sound Coverage:** 360°
- **Microphone Sensitivity:** -29 dB V/Pa @ 1kHz
- **Microphone SNR:** >59 dB
- **Dimensions (W × D × H):** 12 × 8 × 4 cm



BSP-Optimized Software Stack

Built for Developers. Validated for Performance.

To help developers confidently build, test, and deploy AI applications, the AVerMedia AI Fusion Kit includes a fully integrated Board Support Package (BSP) designed for the Jetson platform.

AI Frameworks and Reference Workflow

The software stack of AI Fusion Kit not only accelerates Language Model applications but also shortens time to market by making AI application development more accessible. It provides a complete end-to-end workflow that allows developers to prototype, test, and deploy AI solutions with ease.

Feature	Customer Value
Pre-integrated BSP (JetPack 6.2)	Speeds up initial setup with ready-to-use environment and hardware compatibility
Quick Start Guide + Setup Script	Reduces onboarding time for engineers and system integrators
Containerized Demo App with GUI	Enables immediate VLM testing and showcases full device capabilities
Support for LLM and VLM Deploy	Compatible with major inference frameworks, simplifying model integration
Broad Model Coverage	Optimized and tested LLM/VLM models including Llama, Phi-4, LLaVA, etc.

Why choose us

Our all-in-one high-fidelity video & audio kit delivers precision, stability, and seamless integration. With plug-and-play modules, optimized BSP & SDK support, and industrial-grade reliability, LLM projects can move faster, safer, and smarter.

