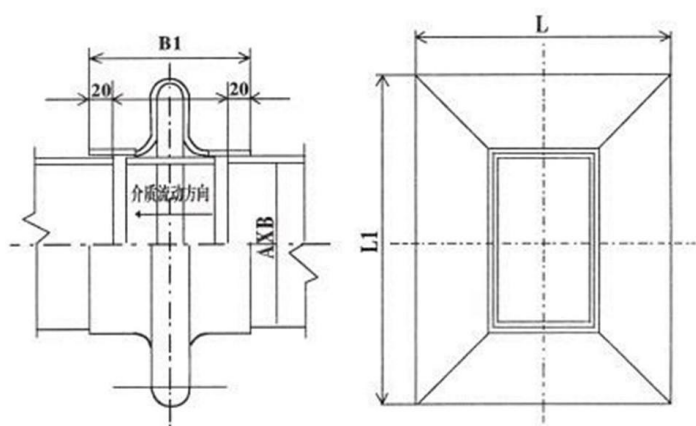


Rectangular expansion joint



TECHNICAL PARAMETERS	
Working pressure	1.0Mpa
Working temperature	- 15 ~ 400℃
Material	stainless steel, carbon steel
Connection method	flange type、Weld
Applicable medium:	water, steam, air, weak acid and alkali, etc.

The Rectangular expansion joint makes use of the effective expansion and deformation of the bellows of its main body to absorb the size changes of pipelines, conduits and containers caused by thermal expansion and cold contraction, or to compensate the axial, transverse and angular displacements of pipelines, conduits and containers. It can also be used for noise reduction and vibration reduction.

MAIN DATA:

DN	A	B	L	L1	
600×700	600	700	909	1009	
600×800		800		1109	
600×900		900		1313	
700×500	700	500	809	1009	
700×700		700			1009
700×800		800			1113
800×800	800	800	1213	1213	
800×1200		1200		1613	
800×1600		1600		2013	
900×400	900	400	709	1209	
900×700		700		1313	
900×1200		1200		1613	
1000×600	1000	600	1013	1418	
1000×700		700			1113
1000×800		800			1213
1000×1000		1000			1413
1200×600	1200	600	1013	1613	
1200×700		700			1113
1200×800		800			1213
1200×1000		1000			1413
1200×1200		1200	1613		

Notes: 1、 Flange is available with DIN Standard,ANSI Standard,JIS Standard,and BS Standard.

2、 Please sent us letter and drawing for customization if you have special requirements.



河南顺赢新能源有限公司
Henan Shunying New Energy Co.,Ltd.

Proposal/Inquiry/Order No:

Customer Name:

Project Name:

Contractor:

NOTES: