

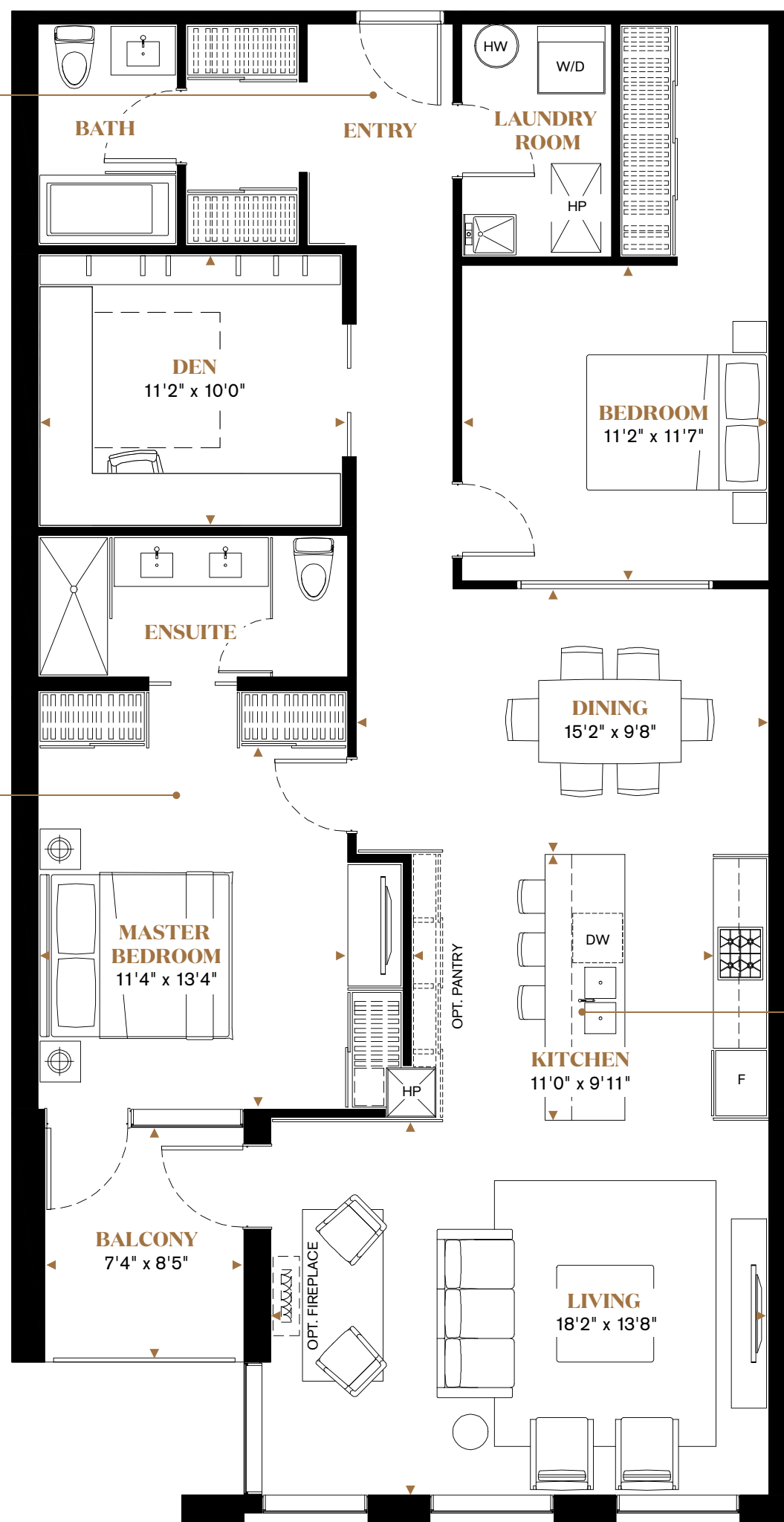


# SCREWDRIIVER

**2 BEDROOM + DEN**  
**1,475 SQ. FT.**  
**INTERIOR**

**ROOMS**  
**2 Bedrooms**  
**2 Baths**  
**Laundry Room**  
**Den**

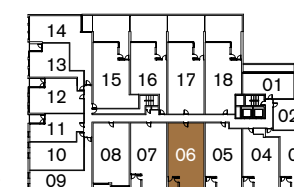
This welcoming gallery-style entrance foyer features twin closets flanked by a main bathroom with a luxurious tub on one side and a full size laundry room with sink on the other.



The bright master retreat features three closets and access to the balcony, drawing the outdoors in. Pocket doors lead to the ensuite with a double vanity and spa-like walk-in shower.

Creating separation between the living room and dining room areas, this stylish kitchen includes a breakfast bar island for casual dining and food preparation while offering an element of contemporary appeal. An optional oversized pantry adds to the functionality of the design and provides loads of storage space.

Unit: 2F + D  
All prices, figures, sizes, specifications and information are subject to change without notice. Furniture is not included. E.&O.E. All areas and stated dimensions are approximate. Actual usable floor space, living area and square footage may vary from stated floor area. Terrace sizes and locations, if any, vary per floor. All illustrations are artist's concept only.



2ND FLOOR



3RD FLOOR