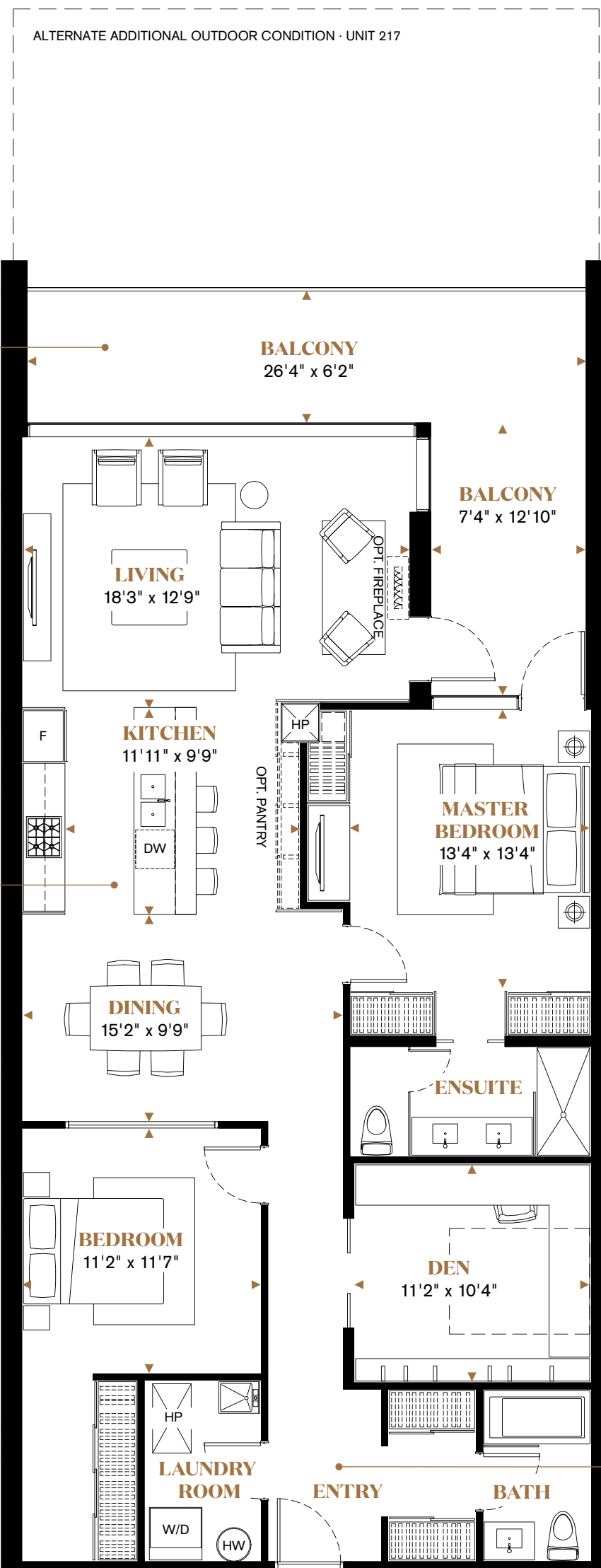




# THE GIBBY

**2 BEDROOM + DEN**  
**1,471 SQ. FT.**  
**INTERIOR**

**ROOMS**  
**2 Bedrooms**  
**2 Baths**  
**Laundry Room**  
**Den**

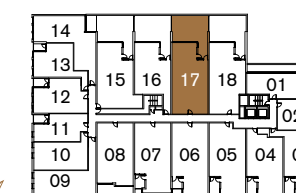


Light streams into this glorious suite through soaring floor-to-ceiling windows. The L-shaped balcony, accessible from the living room as well as the master bedroom extends the living space outdoors.

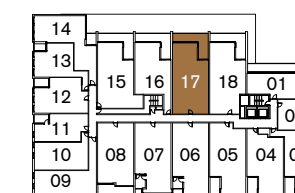
The luxurious kitchen divides this suite's open concept flow; creating a sense of separation between the living room and dining room areas. The breakfast bar island is ideal for casual dining and distinguishes the space with contemporary appeal. The kitchen also features an optional oversized pantry which adds to the tremendous functionality of the design.

The welcoming entry offers convenient twin closets flanked by a stylish main bathroom with a luxurious tub on one side and a full-sized laundry room with sink on the other.

Unit: 2E + D  
All prices, figures, sizes, specifications and information are subject to change without notice. Furniture is not included. E.&O.E. All areas and stated dimensions are approximate. Actual usable floor space, living area and square footage may vary from stated floor area. Terrace sizes and locations, if any, vary per floor. All illustrations are artist's concept only.



2ND FLOOR



3RD FLOOR