

THURSTON COUNTY  
WASHINGTON  
SINCE 1852



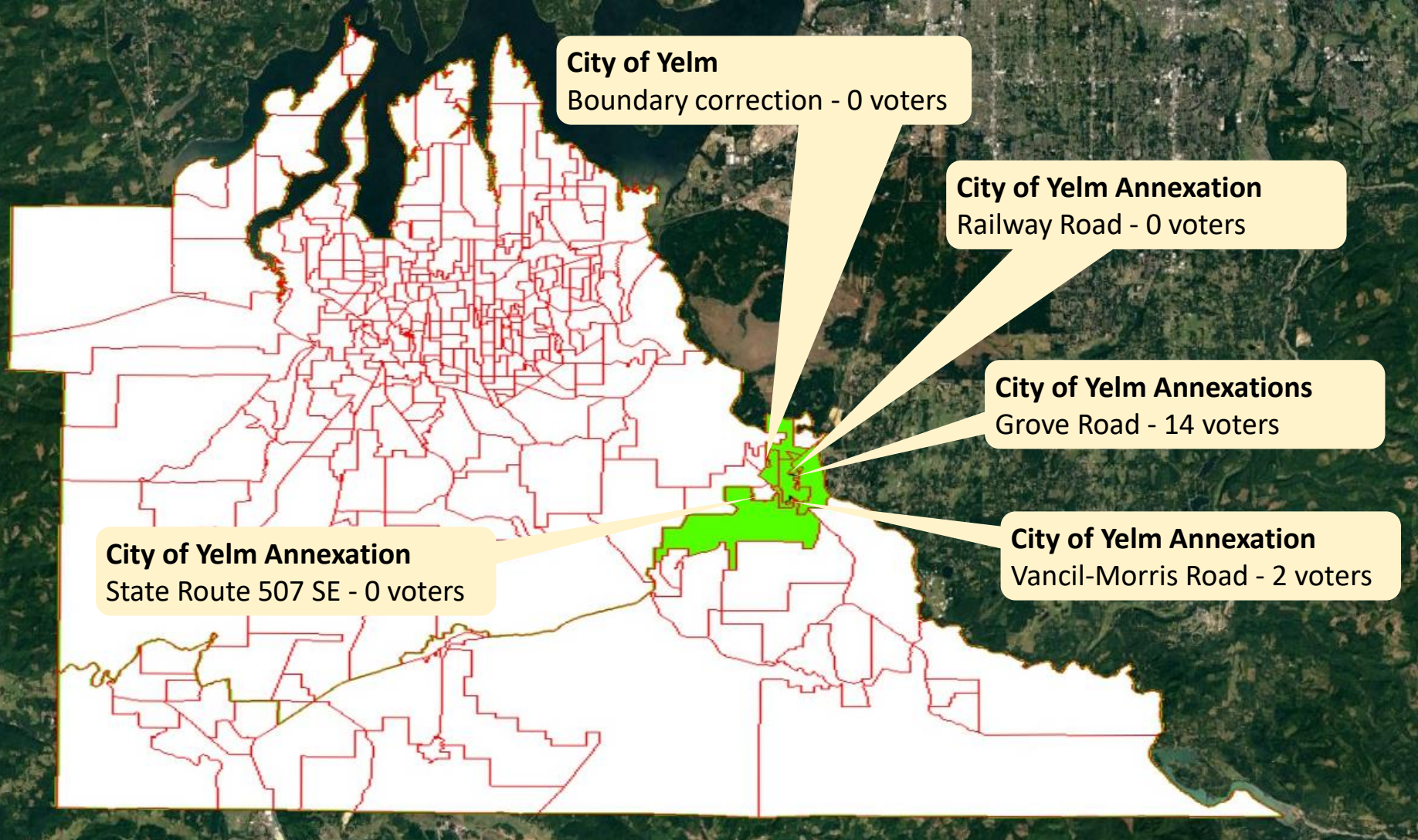
# Thurston County Auditor's Election Division

## 2024 Precinct Maintenance Plan

### November 2023

# Overview

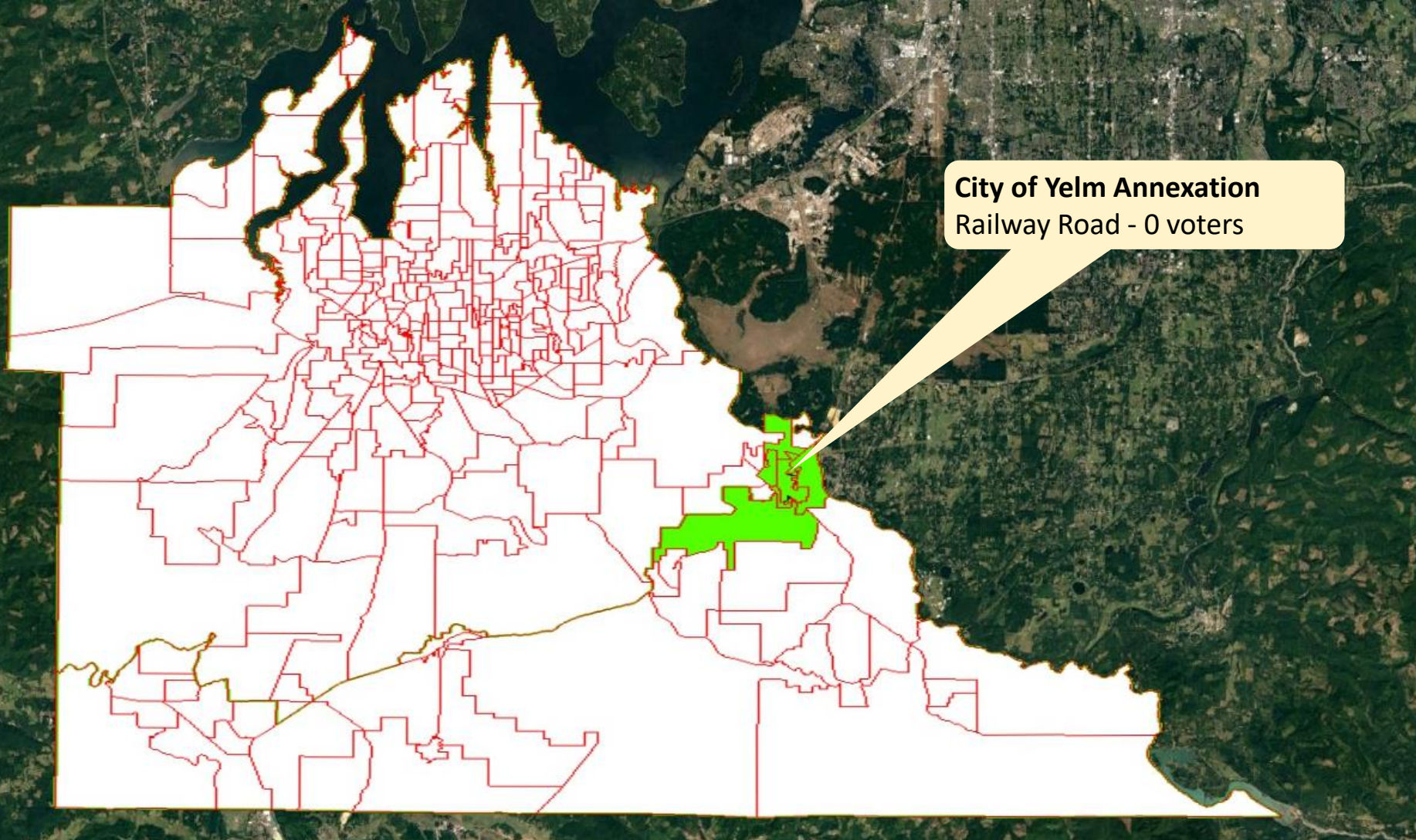
- No changes to the Five County Commissioner District boundaries that were approved in 2022.
- Thurston County currently has 286 voting precincts.
- In accordance with RCW 29A.16.040:
  - No changes may be made during the period starting seven\* days prior to the first day for candidates to file for the Primary Election. (\*Changed from “fourteen days” during 2023 legislative session.)
  - No precinct may exceed 1,500 active registered voters.
- In accordance with RCW 29A.16.050:
  - Every voting precinct must be wholly within a single congressional district, a single legislative district, a single district of a county legislative authority, and, if applicable, a single city.
  - Every voting precinct must be composed, as nearly as practicable, of contiguous and compact areas.



### Overview

- 5 City of Yelm Annexations (Railway Road, Vancil-Morris Road, Grove Road (2 areas), and State Route 507 SE Annexations)
- 1 City of Yelm boundary correction

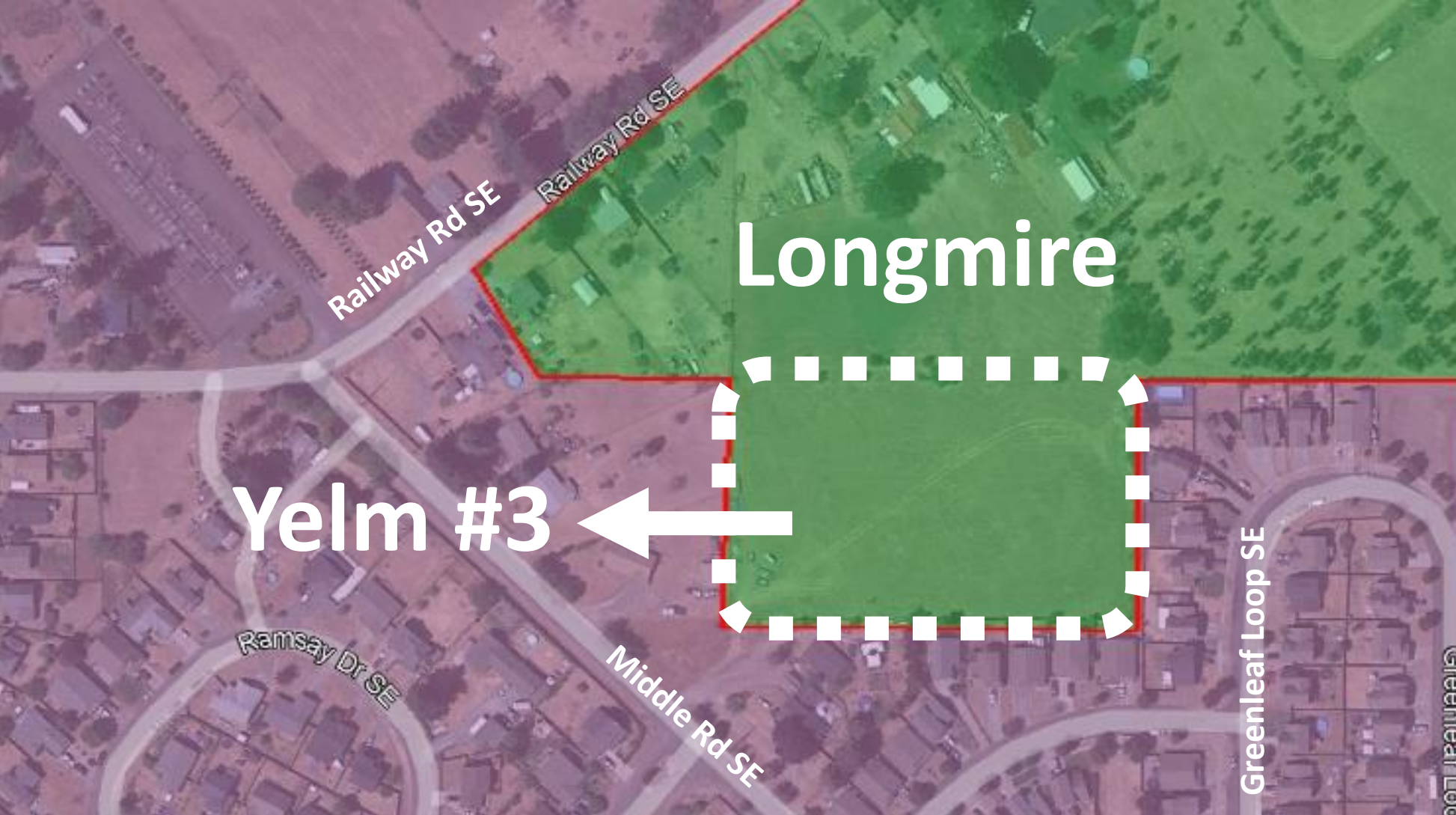




### City of Yelm – Railway Road Annexation

- Longmire (Pct. 126) – approx. voter total = 634
- Yelm #3 (Pct. 703) – approx. voter total = 1,274
- Approx. voters in new precinct = 0





**City of Yelm – Railway Road Annexation**

- Add annexed parcel to Yelm #3 (Pct. 703)
- Approx. voters affected = 0



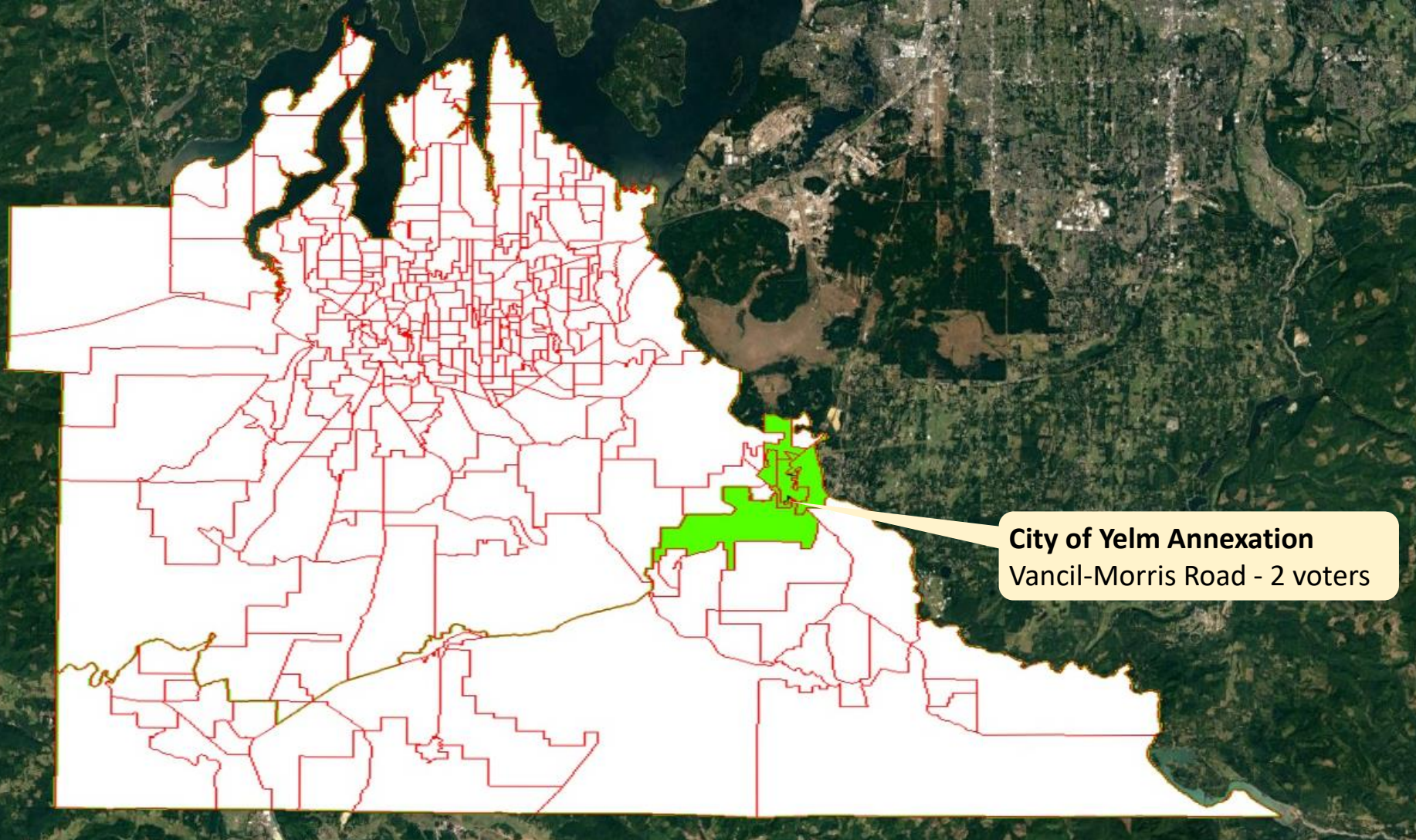
**Yelm #3**

**Longmire**

**City of Yelm – Railway Road Annexation**

- New voter total for Longmire (Pct. 126) = 634
- New voter total for Yelm #3 (Pct. 703) = 1,274

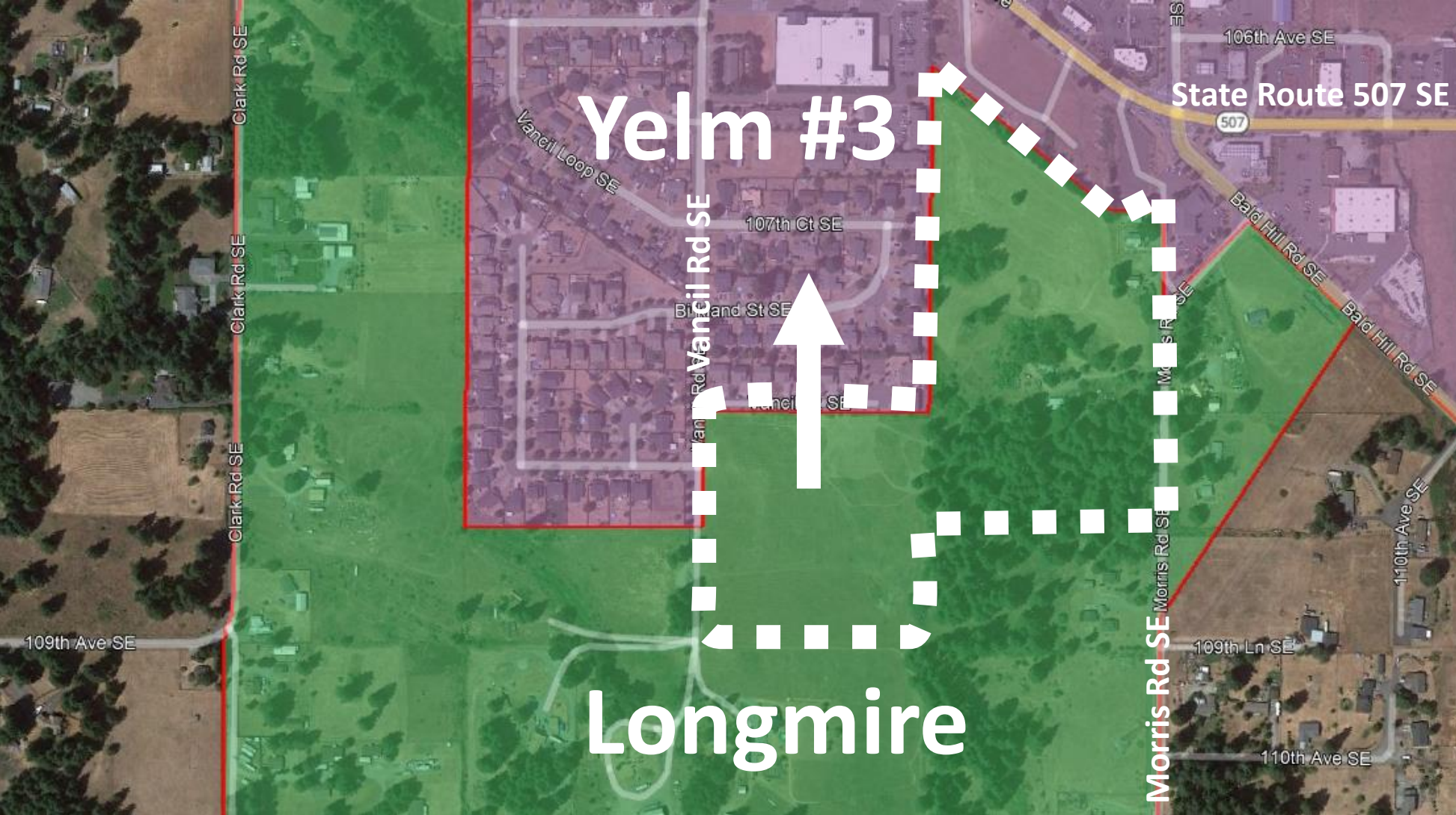




### **City of Yelm – Vancil-Morris Road Annexation**

- Longmire (Pct. 126) – approx. voter total = 634
- Yelm #3 (Pct. 703) – approx. voter total = 1,274
- Approx. voters in new precinct = 2



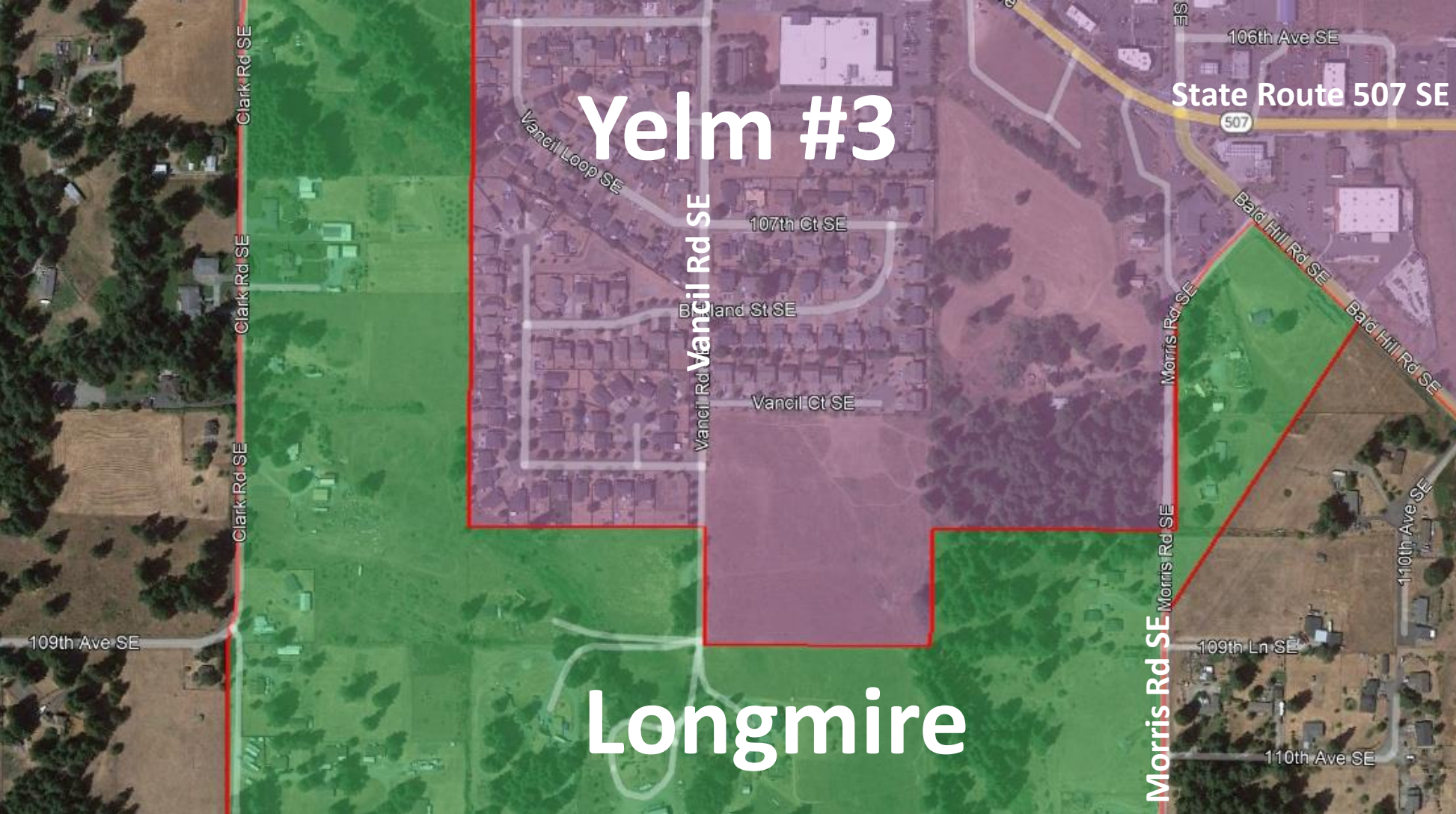


### City of Yelm – Vancil-Morris Road Annexation

- Add annexed area to Yelm #3 (Pct. 703)
- Approx. voters affected = 2





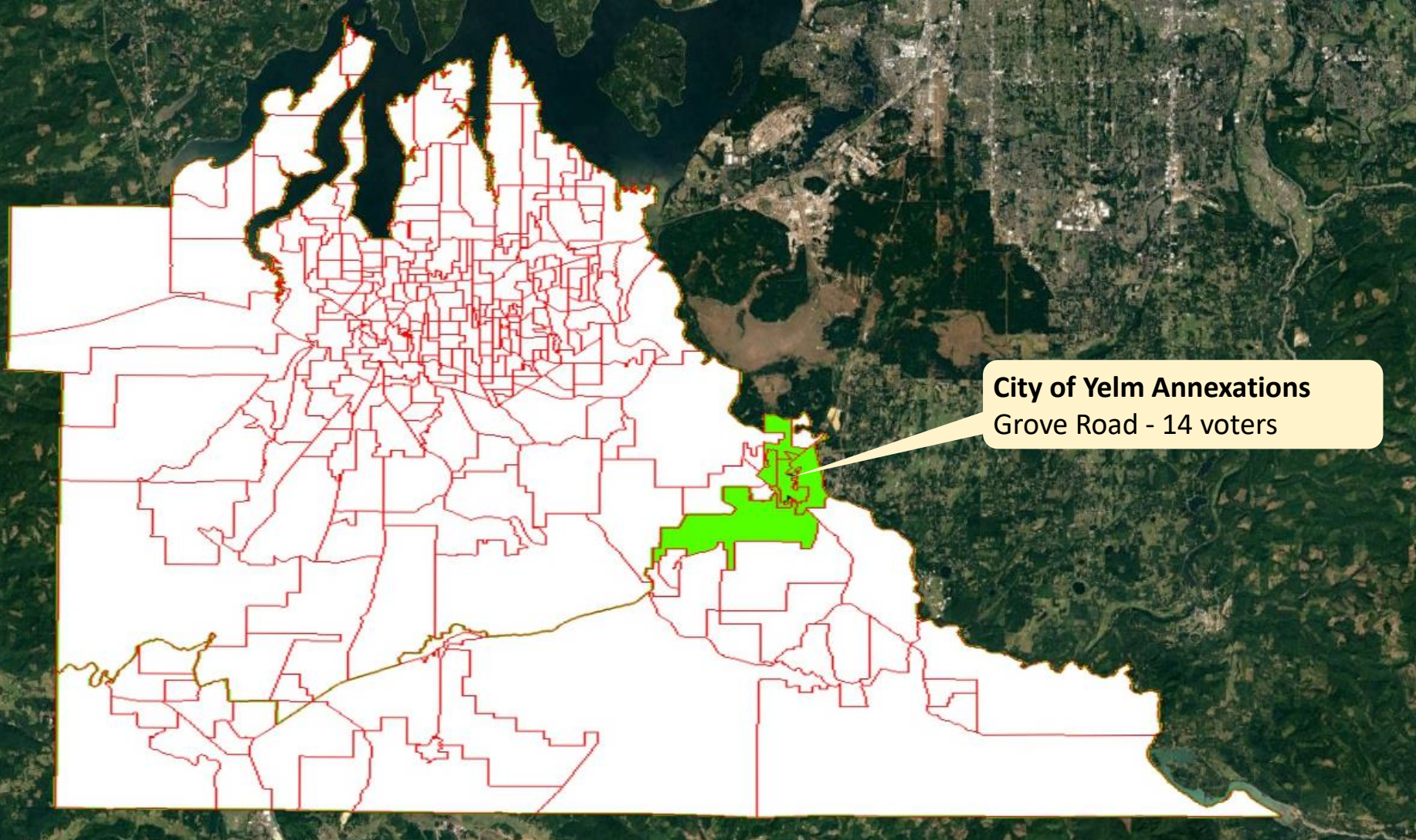


### City of Yelm – Vancil-Morris Road Annexation

- New voter total for Longmire (Pct. 126) = 632
- New voter total for Yelm #3 (Pct. 703) = 1,276



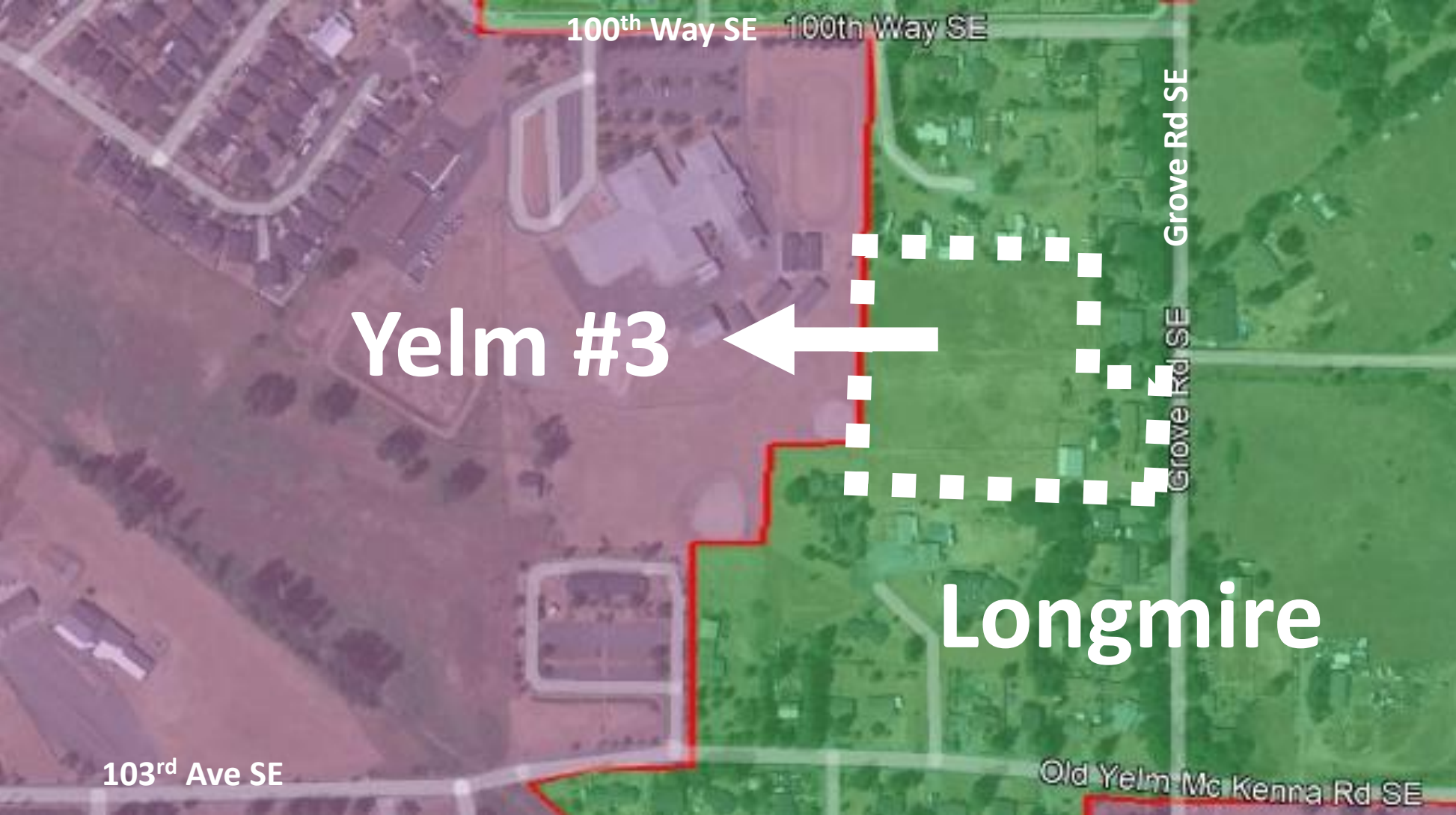




### City of Yelm – Grove Road Annexations

- Longmire (Pct. 126) – approx. voter total = 632
- Yelm #3 (Pct. 703) – approx. voter total = 1,276
- Approx. voters in new precinct = 14





**City of Yelm – Grove Road Annexations (Area 1)**

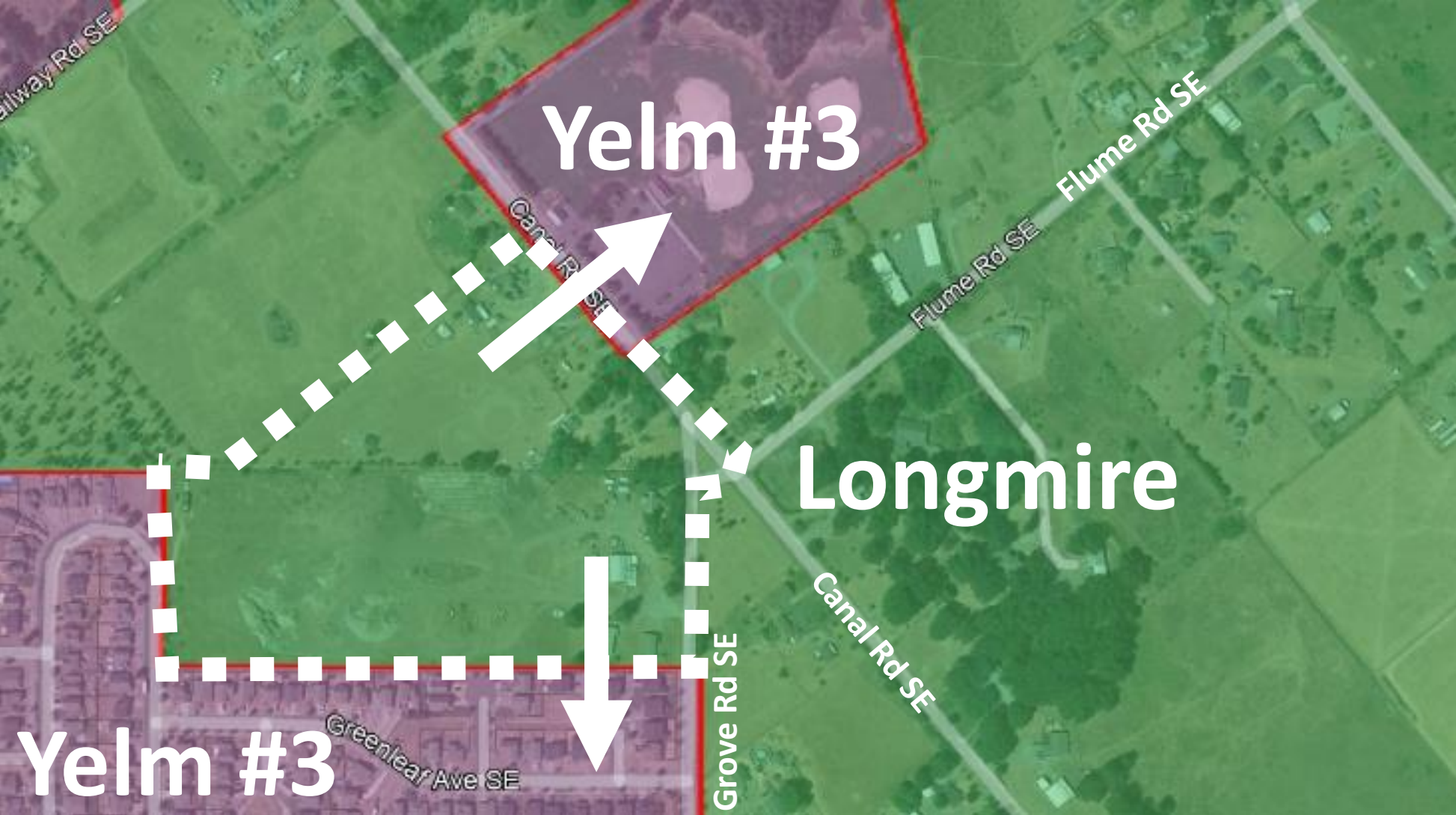
- Add annexed area to Yelm #3 (Pct. 703)
- Approx. voters affected = 5



**City of Yelm – Grove Road Annexations (Area 1)**

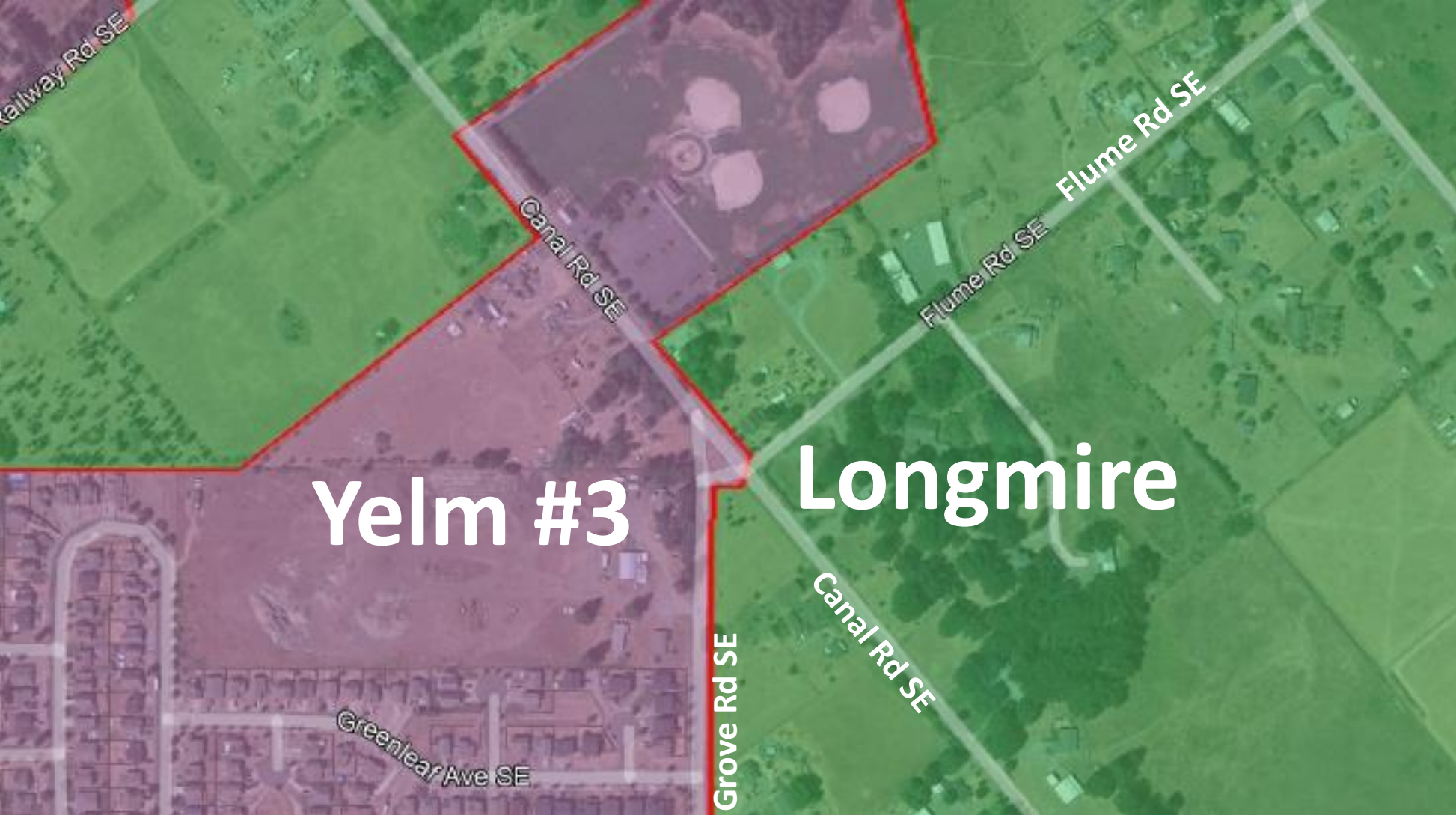
- New voter total for Longmire (Pct. 126) = 627
- New voter total for Yelm #3 (Pct. 703) = 1,281





**City of Yelm – Grove Road Annexations (Area 2)**

- Add annexed area to Yelm #3 (Pct. 703)
- Approx. voters affected = 9

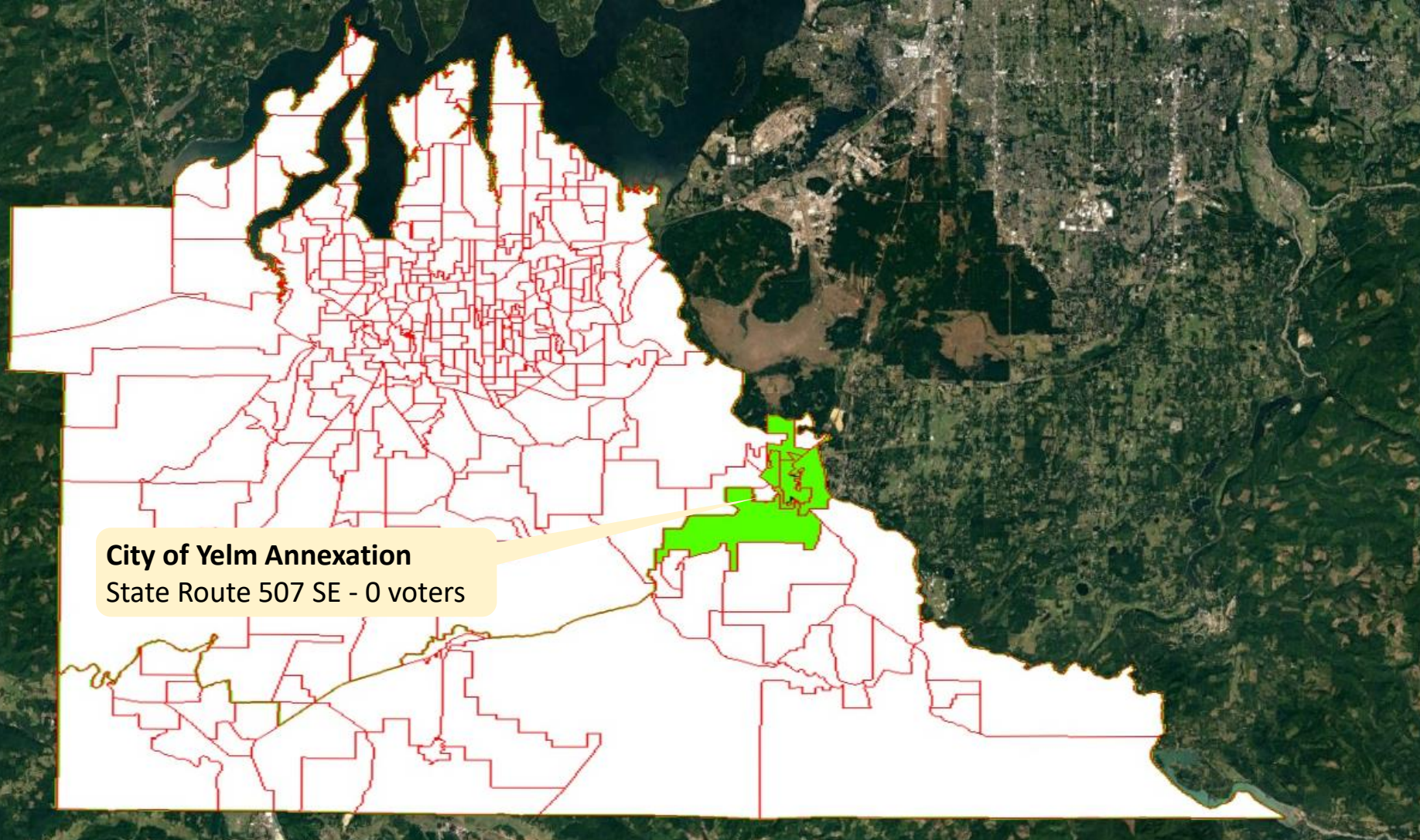


# Yelm #3 Longmire

## City of Yelm – Grove Road Annexations (Area 2)

- New voter total for Longmire (Pct. 126) = 618
- New voter total for Yelm #3 (Pct. 703) = 1,290





### City of Yelm – State Route 507 SE Annexation

- Deschutes (Pct. 125) – approx. voter total = 1,271
- Approx. voters in new precinct = 0

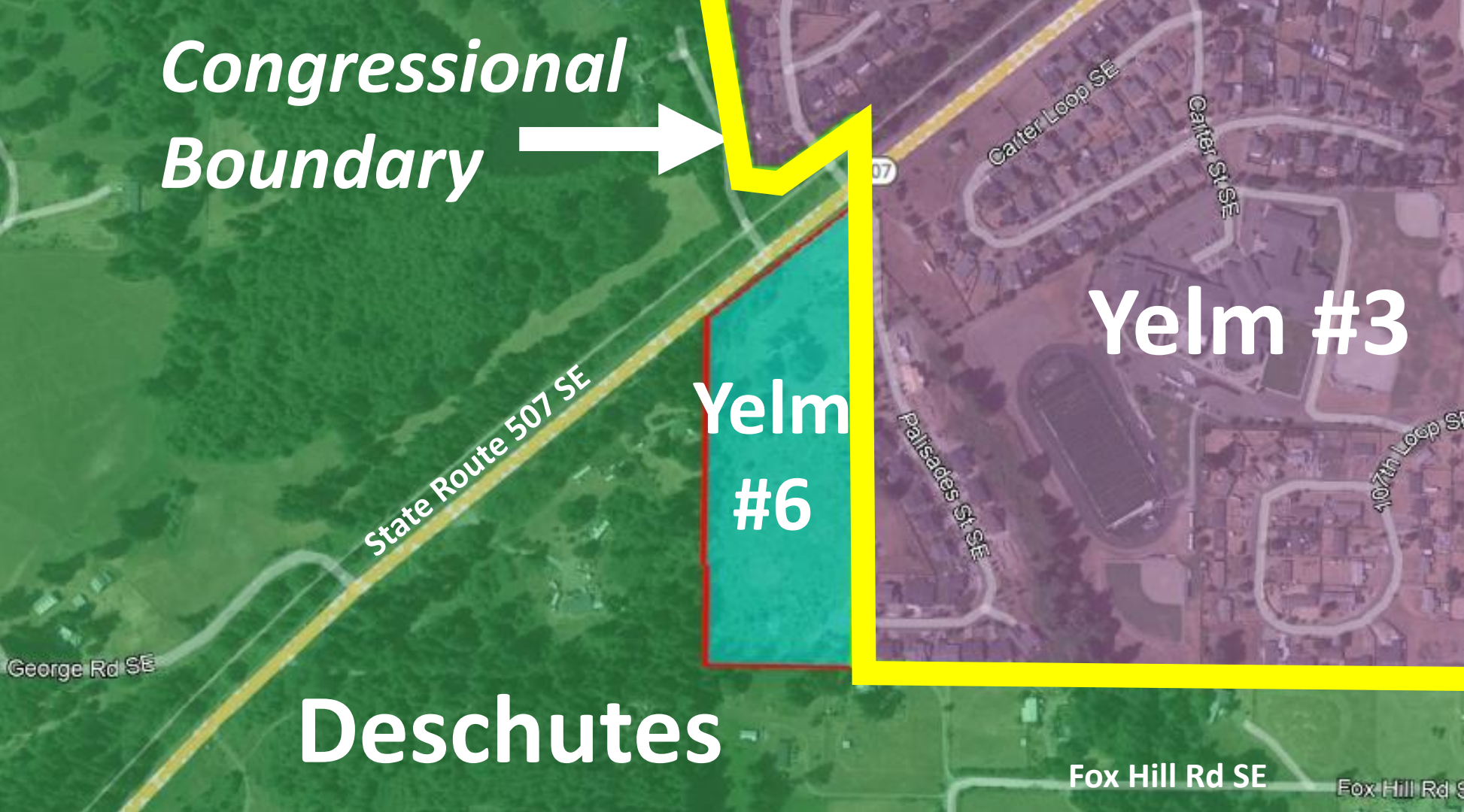




### City of Yelm – State Route 507 SE Annexation

- Annexed parcel to newly created Yelm #6 (Pct. 706)
- Creates a new City of Yelm precinct because of the Congressional District Boundary
- Approx. voters affected = 0

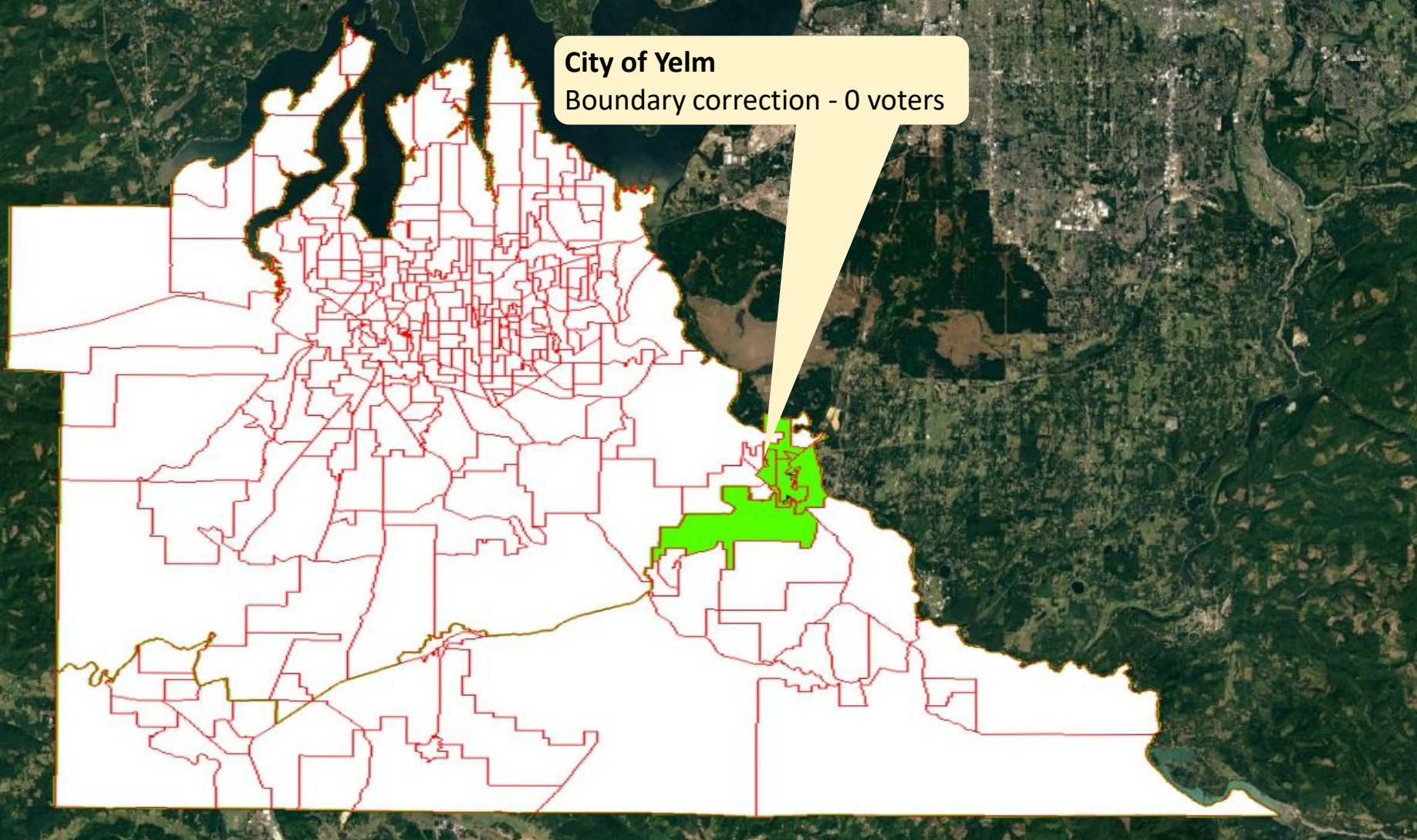




### City of Yelm – State Route 507 SE Annexation

- New voter total for Deschutes (Pct. 125) = 1,271
- Voter total for new Yelm #6 (Pct. 706) = 0





### City of Yelm – Boundary Correction

- Fristoe (Pct. 124) – approx. voter total = 633
- Yelm #1 (Pct. 701) – approx. voter total = 1,078
- Approx. voters in new precinct = 0





### City of Yelm – Boundary Correction

- City of Yelm boundary should follow creek not parcel lines
- Approx. voters affected = 0





### City of Yelm – Boundary Correction

- New voter total for Fristoe (Pct. 124) = 633
- New voter total for Yelm #1 (Pct. 701) = 1,078



# Proposed Results

- No changes to commissioner district boundaries. No voter total change for commissioner districts.
- Proposed 2024 Precinct Count = 287
- Approximate Voters Affected = 16 (0.008%)
- Voting Precincts Added = 1 (Yelm 6)
- Legal Descriptions Added = 1 (Yelm 6)
- Precinct Boundary Adjustments due to City of Yelm Annexations and Precinct Boundary Adjustments = 5 (Fristoe, Deschutes, Longmire, Yelm 1, and Yelm 3)
- Precinct Legal Descriptions Amended due to City of Yelm Annexations and Precinct Boundary Adjustments = 5 (Fristoe, Deschutes, Longmire, Yelm 1, and Yelm 3)
- Commissioner Legal Descriptions Amended (only internal precinct changes, no boundary changes, and no total voter changes) = 1 (Commissioner District No. 2 to reflect one added precinct)

# Thank You