

Emergency Support Function #9 Search & Rescue Annex

Thurston County Comprehensive Emergency Management Plan (CEMP)



Adopted April 2025

Prepared By:

Thurston County Emergency Management
9521 Tilley Rd S.
Olympia, WA 98512
360-867-2800 | tcem@co.thurston.wa.us

In Partnership With:

Primary Agency
Thurston County Sheriff's Office

Supporting Agencies & Organizations:

Thurston County Emergency Management
Thurston County Jeep Patrol
Thurston County WESAR
Thurston County SAR
Thurston County Special Operations Rescue Team

Record of Changes

Change #	Date of Change	Point of Contact	Section(s) added, removed, or edited
25-001	April 2025	Sonya Kroese, Thurston County Emergency Management	Complete annex revision

Table of Contents

1. Introduction	4
1.1 Purpose	4
1.2 Scope	4
1.3 Laws & Policies	5
1.4 Situation	6
1.5 Planning Assumptions	7
2. Organization	8
3. Concept of Operations	9
3.1 General	9
3.2 Activation of ESF 9	9
3.3 Critical ESF 9 Response Tasks	9
3.4 Preparedness Activities	11
4. Responsibilities	12
4.1 Thurston County Sheriff's Office (Primary Agency)	12
4.2 Thurston County Emergency Management	12
4.3 Thurston County Dive Rescue Team	12
4.4 Thurston County Special Operation Response Team (SORT)	12
4.5 Other Search & Rescue Units	12
4.6 Thurston 911 Communications (TCOMM)	13
5. Resource Requirements	13
5.1 Local Resource Inventory	13
5.2 Resource/Capability Gaps	14
5.3 Mutual Aid	14
5.4 State & Federal Aid	14
6. Supporting Plans & Procedures	15
6.1 Washington State Comprehensive Emergency Management Plan , ESF #9 (Search and Rescue) Annex	15
6.3 References	15
7. Terms & Definitions	15
8. Attachments	15

1. Introduction

1.1 Purpose

This document is a supporting annex of the Thurston County Comprehensive Emergency Management Plan (*base plan*) and serves to establish policies and procedures for the effective countywide coordination of necessary search and rescue (SAR) capabilities in the event of a human, technological or natural caused disaster. Primary and supporting agencies, their general responsibilities, and critical disaster response activities related to SAR are identified herein and serve as a reference for executive officials, Emergency Coordination Center (ECC) staff and incident commanders to coordinate delivery of SAR resources and capabilities during incident response.

1.2 Scope

Emergency Support Function (ESF) #9 coordinates rapid deployment of local SAR components to provide specialized lifesaving assistance to Thurston County when activated, to include:

- Structural collapse (urban) search and rescue.
- Waterborne search and rescue.
- Land search and rescue.

ESF #9 also addresses use of SAR resources in support of emergency management response and recovery activities.

As part of incident response operations at the Emergency Coordination Center, ESF #9 coordinates information and resources to directly support effective delivery of the following core capabilities: Mass Search and Rescue Operations. Through intersecting activities with other support functions, ESF #9 provides general support to the following additional core capabilities: Operational Coordination; Environmental Response; Health & Safety; Fatality Management Services; On-scene Security, Protection and Law Enforcement, Public Health, Healthcare and Emergency Medical Services. Core capabilities are derived from the *National Preparedness Goal* and further described in the base plan. Displayed below is a summary of the primary and supported core capabilities identified for ESF #9.

Figure 1: ESF #9, Search & Rescue Primary and Supporting Capabilities

Primary Response Core Capability	
Mass Search & Rescue Operations	Deliver traditional and atypical search and rescue capabilities, including personnel, services, animals, and assets to survivors in need, with the goal of saving the greatest number of endanger lives in the shortest time possible.
Supporting Core Capabilities	
Operational Coordination	Establish and maintain a unified and coordinated operational structure and process that appropriately integrates all critical stakeholders and supports the execution of core capabilities.
Environmental Response / Health & Safety	Conduct appropriate measures to ensure the protection of the health and safety of the public and workers, as well as the environment, from all-hazards in support of responder operations and the affected communities.
Fatality Management Services	Provide fatality management services, including decedent remains recovery and victim identification, working with local, state, tribal, territorial, insular area, and federal authorities to provide mortuary processes, temporary storage or permanent internment solutions, sharing information with mass care services for the purpose of reunifying family members and caregivers with missing persons/remains, and providing counseling to the bereaved.
On-scene Security, Protection & Law Enforcement	Ensure a safe and secure environment through law enforcement and related security and protection operations for people and communities located within affected areas and also for response personnel engaged in lifesaving and life-sustaining operations.

1.3 Laws & Policies

WAC 118-04 (Emergency worker program) delineates the responsibilities of authorized officials and emergency workers before, during and after emergencies, disasters, and other specific missions.

RCW 38.52.400 (Search and rescue) defines Search and Rescue (SAR), assigns responsibilities for SAR, establishes the position and duties of the State SAR Coordinator, and establishes the extensive liability protection and compensation program which protects SAR volunteers in the State of Washington.

RCW 4.24.300 (Immunity from liability for certain types of medical care) offers legal protections to persons who render, without compensation, reasonable emergency care, first aid, treatment, assistance or transportation to an injured person or person at the scene of an emergency or disaster.

RCW 4.24.311 (Immunity from liability for certain care or assistance at scene of emergency or disaster) offers legal protections to people who render, without compensation, reasonable nonmedical care or assistance, to include response and rescue operations, at the scene of an emergency or disaster.

1.4 Situation

1.4.1 General Overview

Thurston County, Washington is 722 square miles in area with a varied topography with 40% of the county comprising of dense forested areas with many mountains, lakes, and rivers and major urban areas to include the cities of Olympia, Lacey, and Tumwater.

Working in cooperation with the Thurston County Sheriff's Office, local law enforcement, fire service agencies, and local volunteer organizations within the region provide effective search and rescue services to the county through specialized and multidisciplinary teams to include the Thurston County Dive Rescue Team, Thurston County Special Operations Rescue Team (SORT), Thurston County Jeep Patrol, Thurston County Washington Explorer Search and Rescue (TCWESAR), and South Puget Sound Mobile Search and Rescue.

Most SAR operations within the county consist of locating and rescuing individuals who become lost or injured during outdoor and/or waterborne recreational activities. These SAR missions are typically within the capability of local SAR teams. Larger incidents however, like those outlined in section 1.4.2, could result in large, multijurisdictional SAR operations.

1.4.2 Hazard Impacts to ESF 9

Section 1.6.2.2 of the base plan contains a summary assessment of all significant hazards that threaten Thurston County. Of those hazards identified, the following have been assessed to have the most significant impact requiring coordination of ESF-9 capabilities:

Hazard	Impact Statement / Description
Earthquakes; Landslides	Earthquakes and landslides can severely damage infrastructure and disrupt services. People could be trapped in the rubble of collapsed buildings, debris and/or mudflow requiring SAR operations to locate and rescue them. Many people could lose their life because of an earthquake or landslide.
Floods; Dam Failure	Floods, as a result of weather and/or dam failure, have the potential to isolate people due to floodwaters cutting off access to essential care and services and/or trap individuals in swift moving waters, requiring SAR operations to locate and rescue them.
Winter Storms	Winter storms have the potential to isolate individuals due to snow and ice making it too hazardous to travel. Some individuals may become isolated in their homes while others may attempt to travel and get stuck on roadways. SAR operations may be required to locate and rescue individual, particularly vulnerable populations, in need of emergency care.
Mass Violence (Terrorist Attack)	A significant mass violence attack involving explosive devices could result in significant infrastructure damage requiring SAR operations to locate and rescue individuals trapped in the rubble of collapsed buildings.

Hazardous Materials Release	Hazardous materials incidents may require specialized SAR operations with capabilities to conduct search and rescue activities utilizing appropriate personal protective equipment in a contaminated environment.
-----------------------------	---

1.4.3 Whole Community

Search and rescue activities within the county make considerations for the whole community by following provisions set forth in the Civil Rights Act of 1964 and other anti-discrimination laws and policies. ESF #9 primary and supporting agencies are committed to providing equal access to search and rescue services for persons with access and functional needs, and persons with Limited English Proficiency (LEP).

1.4.3.2 Individuals with Disabilities, Access, and Functional Needs

ESF #9 takes into consideration the physical, programmatic, and communications needs of individuals with disabilities and others with access and functional needs by using specialized gear for transporting disabled persons and providing secure transport of said individuals.

1.5 Planning Assumptions

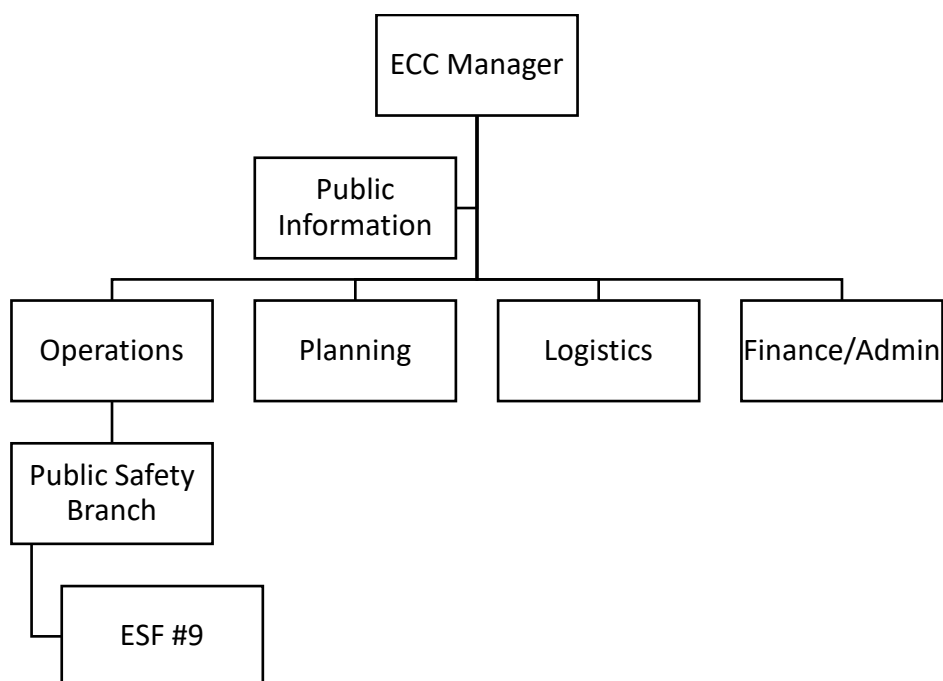
In addition to the planning assumptions listed in section 1.7.1 of the base plan, the ESF 9 plan annex is based on the following additional assumptions:

- People will become lost, injured and/or die during an emergency or disaster requiring search and rescue activities.
- An emergency or disaster may cause buildings to collapse threatening lives and requiring search and rescue and/or medical care.
- Heavy rescue operations, or water rescue due to flooding will require specialized teams such as the Special Operations Rescue Team (SORT) or the Thurston County Dive Team.
- Some residents may have mobility or communication impediments such as hearing, or behavioral, or cognitive impairment. Communication may also be difficult due to residents with Limited English Proficiency.
- Large numbers of residents may spontaneously volunteer to assist in SAR operations. Coordination and direction of these residents will be necessary to mitigate risk.
- Some residents may have medical needs that require transport or may need medical attention before they can be transported.
- A large emergency or disaster will overwhelm local SAR units may require state SAR coordination assistant.
- Air rescue resources may be limited or unavailable in the immediate aftermath of a major incident due to competing resource needs across multiple jurisdictions, volume of those requiring rescue, and/or environmental conditions such as weather. In such cases, land and water will be the primary means to rescue people.

2. Organization

2.1 ESF #9 Organizational Structure

During a disaster requiring activation of the Emergency Coordination Center, ESF #9 is organized under Operations Section, reporting to the Public Safety Branch Director or directly to the Operations Section Chief if the Public Safety Branch is not established. If neither the Operations Section nor Public Safety Branch are established, ESF #9 reports directly to the ECC Manager.



2.2 ESF 9 Agencies & Organizations

Local agencies that coordinate ESF #9 support are identified under one of two categories: primary or supporting. Definitions of each can be found under section 2.3.2 of the base plan.

Primary Agency/Agencies		
Thurston County Sheriff's Office		
Supporting Agencies		
Thurston County Emergency Management	Thurston County SAR Units	Thurston County Special Operations Rescue Team
Thurston County Dive Team	TCOMM 911	

3. Concept of Operations

3.1 General

Generally, the need to activate SAR teams will be received by Thurston 911 Communications (TCOMM). TCOMM will notify either an on-duty TCSO SAR deputy or the TCSO SAR Team manager. After gathering all available information, the TCSO SAR personnel will consult with the Thurston County SAR Volunteer Coordinators to determine if the requested SAR resources are available.

If a consensus between the TCSO SAR Volunteer Coordinator and SAR units determine that Thurston County SAR assets will be deployed, a state mission number is obtained from Washington State Alert and Warning Center before any volunteer units are formally dispatched. Thurston County Emergency Management is notified that Thurston County SAR assets have been deployed. The nature of the mission will determine the level of Thurston County Emergency Management's activation.

During in-county SAR missions, a TCSO SAR Deputy will be an active participant in the mission. For out-of-county missions, SAR assets will operate without an on-scene TCSO SAR Deputy. The Thurston County Sheriff's Office SAR Deputies and the SAR Team Manager are available to assist should the need arise.

3.2 Activation of ESF 9

ESF #9 may be activated to support SAR operations within the county based on an analysis by field supervisors. When the field supervisor determines that the enhanced skills and advanced equipment possessed by the various SAR units and personnel will likely elevate the chance of completing the mission, ESF 9 is activated. The exact level of activation is based on the level of complexity presented by the mission. As the complexity of the mission changes, the level of activation is altered accordingly. For county SAR operations, TCSO provides ESF #9 staffing as required to the ECC.

Requests to support SAR operations outside of the county are generally received by TCOMM when the State EOC has received a request. The decision to deploy SAR volunteer resources to support SAR operations outside of the county is made by the Sheriff's Office SAR Team manager in consultation with the SAR coordinators.

3.3 Critical ESF 9 Response Tasks

To achieve effective disaster response, ESF #9 coordinates information and resources among primary and supporting agencies to support critical response tasks. The critical tasks identified below align with ESF 9's primary core capabilities and serve as a foundation to develop intermittent objectives during disaster response to re-establish or re-stabilize community lifelines.

Mass Search & Rescue Operations		
#	Critical Task Description	Responsible Agencies
1	Coordinate search and rescue (SAR) operations to locate and rescue persons in distress.	Thurston County Sheriff's Office All SAR Teams/Units
2	Provide structure/urban collapse SAR capabilities in support of countywide SAR operations.	Thurston County SORT
3	Provide swift-water and still-water SAR capabilities in support of countywide SAR operations.	Thurston County Dive Team
4	Coordinate with USCG for maritime SAR operations within Puget Sound as required.	Thurston County Sheriff's Office Thurston County Dive Team
5	Provide wilderness / inland and wide-area SAR capabilities in support of countywide SAR operations.	Thurston County Sheriff's Office All SAR Teams/Units
6	Initiate community-based search and rescue support operations across a wide, geographically dispersed area.	Thurston County Sheriff's Office SORT Team Thurston County Dive Team All SAR Units
7	Ensure the synchronized deployment of local, regional, national, and international teams to reinforce ongoing search and rescue efforts and transition to recovery.	Thurston County Sheriff's Office SORT Team Thurston County Dive Team All SAR Units
8	Coordinate support for aeronautical SAR operations with the Civil Air Patrol, State SAR Coordinator and WSDOT as required.	Thurston County Sheriff's Office Thurston County Emergency Management
Situational Assessment		
4	Coordinate information collection on the status of missing and/or found individuals.	Thurston County Sheriff's Office SORT Team Thurston County Dive Team All SAR Units

5	Collect, analyze, and disseminate incident information sufficient to inform decision making regarding immediate lifesaving and life-sustaining SAR activities.	Thurston County Emergency Management Thurston County Sheriff's Office
Operational Coordination		
6	Establish and maintain a unified operational structure to coordinate and execute SAR operations.	Thurston County Sheriff's Office Thurston County Emergency Management All SAR Units
7	Assign staff member(s) to participate in the ECC as liaison, if activated, to coordinate SAR activities with ECC command staff and other ESFs.	Thurston County Sheriff's Office
8	Engage governmental, private, and civic sector resources within and outside of the affected area to meet requirements for SAR operations.	Thurston County Sheriff's Office Thurston County Emergency Management
9	Coordinate SAR operations support with ESF #13 (Public Safety, Security, and Law Enforcement) agencies during evacuation operations to provide SAR to individuals unable to safely evacuate.	Thurston County Sheriff's Office All SAR Units
Critical Transportation		
7	Provide transportation (including infrastructure access and accessible transportation services) for SAR objectives, including the movement of rescued people and animals, and the delivery of vital response personnel, equipment, and services into the affected areas.	Thurston County Public Works (ESF #1) Thurston County Sheriff's Office All SAR Units

3.4 Preparedness Activities

Thurston County Emergency Management ensures search and rescue personnel are registered under the Emergency Workers Program of WA State which allows them to operate as an emergency response volunteer group without the financial burden of liability insurance.

Thurston County Search & Rescue groups maintain rigorous training standards ensuring the safety of the individual, the team and those being rescued.

SAR groups partner with Emergency Management to review emergency plans and ensure adequate resources are available to activate the plans requiring SAR capabilities.

4. Responsibilities

4.1 Thurston County Sheriff's Office (Primary Agency)

The chief law enforcement officer of each political subdivision is responsible for local search and rescue activities (RCW 38.52.400.(1)). In Thurston County, overall responsibility for SAR activities falls under the Thurston County Sheriff's Office. Responsibilities include, but are not limited to:

- Providing direction, control, and coordination of SAR operations within Thurston County.
- Identifying resources needed in support of SAR operations.
- Maintaining current SAR Call-Out rosters.
- Informing Emergency Management of SAR activations.
- Requesting SAR mission numbers from Emergency Management.

4.2 Thurston County Emergency Management

Thurston County Emergency Management maintains overall responsibility for development and implementation of the Comprehensive Emergency Management Plan (CEMP) and its associated plans to include the ESF #9 annex. Responsibilities include but are not limited to:

- Ensuring proper registration and classification of SAR volunteers in accordance with the provisions of Chapter 118-04 WAC.
- Processing any claims covered under a state mission number.
- Maintaining incident documentation related to SAR missions as necessary for disaster financial assistance / cost reimbursement.
- Coordinating resource requests to support SAR operations as requested.

4.3 Thurston County Dive Rescue Team

The Thurston County Sheriff's Office Dive Rescue Team is a multi-agency team comprised of Thurston County Deputies, Lacey Police Officers, and Lacey Firefighters responsible for providing SAR capabilities involving rivers, lakes, ponds, ditches, or other waterbodies.

4.4 Thurston County Special Operation Response Team (SORT)

The Thurston County SORT is a multi-agency team comprised of personnel from multiple fire service agencies within the county. SORT is responsible for providing specialized technical rescue operations, including rope rescue, low angle rescue, confined space rescue, tree rescue, and urban search and rescue (USAR).

4.5 Other Search & Rescue Units

Other county search and rescue units include registered volunteers with local SAR organizations such as Thurston County Jeep Patrol, Thurston County Washington Explorer Search and Rescue (TCWESAR), and South Puget Sound Mobile Search and Rescue. These SAR units provide personnel and resources for SAR activities under the direction of Thurston County Sheriff's

Office with responsibility for ensuring personnel receive and maintain proper training and equipment to meet state and local SAR requirements.

4.6 Thurston 911 Communications (TCOMM)

TCOMM is the Public Safety Access Point (PSAP) and dispatch center for Thurston County responsible for receiving and dispatching requests for SAR to the Thurston County Sheriff's Office.

5. Resource Requirements

5.1 Local Resource Inventory

Below are local resources that have been identified by ESF #9 coordinating, primary and supporting agencies that could potentially fulfill requests to provide Search & Rescue capabilities in support of incident response and recovery.

Resource Typing Definition	Quantity	Organization Owner(s)
Fixed Wing Air Search Team	1	Civil Air Patrol
Fixed Wing Airborne Reconnaissance	1	Civil Air Patrol
Cave Search & Rescue	1 Team	Special Operations Rescue Team (SORT)
Land Search and Rescue Team	2-8 Teams	Jeep Patrol WESAR
Mine Search and Rescue	1 Team	Special Operations Rescue Team (SORT)
Mountain Search and Rescue	2-4 Teams	WESAR
Stillwater/Flood Search and Rescue	1 Team	Thurston County Sheriff's Office Dive Team
Urban Search and Rescue Incident Support Team	1 Team	Thurston Search and Rescue (TSAR)
Urban Search and Rescue Task Force	1 Team	Special Operations Rescue Team (SORT)
Waterborne Search and Rescue	2 Teams	Thurston County Sheriff's Office Dive Team Thurston County Sheriff's Office Marine Services Unit

The above list is used as a reference tool for planners and coordinators and does not establish any binding agreement for these agencies to provide the resources identified herein. See ESF-7 Annex (Logistics) and the Resource Management section of the base plan for the county's policies and procedures for mutual aid requests, resource management and disaster procurement.

5.2 Resource/Capability Gaps

Based on estimated hazard impacts and the current ESF 9 capabilities of local agencies, local planners have identified the following additional resources that may be needed during an incident to fully support search and rescue critical response tasks.

Resource Typing Definition	Critical Task(s) Supported	Justification
Helicopter/Rotary Wing Search and Rescue (SAR) Team (Type 4, 3, or 2)	1, 5	Local county agencies do not own any rotary wing aircraft. Outside county mutual aid and/or state assistance would be needed for rotary wing SAR support to access areas that cannot be reached by other means.
Canine Search Teams – Disaster/Structural Collapse (Type 2)	1	Canines can often access areas that cannot be reached by other means. In addition, air scent dogs may be able to track a missing person or locate deceased persons.
Canine Search Teams – Land (Single Type)	1	
Canine Search Teams – Water (Type 2)	1	

5.3 Mutual Aid

Thurston County Sheriff's Office, other local law enforcement, and local fire agencies maintain interlocal agreements to provide mutual aid for SAR support throughout the county. Mutual aid within the county is generally coordinate through public safety dispatch (TCOMM) unless normal dispatch channels become overwhelmed or otherwise unable to coordinate SAR resource requirements. In such cases, the ECC through EFS #9 may assist with coordination of local mutual aid for SAR support.

5.4 State & Federal Aid

The Emergency Worker Program is governed by the Revised Code of Washington, chapter 38.52. This law defines search and rescue, assigns responsibilities, and establishes the limited liability protection against SAR volunteers in Washington State.

Multi-jurisdictional operations coordination is the responsibility of the state SAR coordinator. All requests for SAR assistance from outside of their home jurisdiction must be coordinated through the state (WAC 118-04-240(3)).

6. Supporting Plans & Procedures

6.1 Washington State Comprehensive Emergency Management Plan , ESF #9 (Search and Rescue) Annex

Emergency Support Function (ESF) 9 Search and Rescue (SAR) covers deployment of search and rescue resources to provide specialized life-saving assistance and for the coordination of all available resources in the conduct of Search and Rescue (SAR) operations statewide, including:

- Structural collapse (urban) search and rescue;
- Maritime/coastal/waterborne search and rescue; and
- Land search and rescue.

6.3 References

NSARC, 2018, *United States National Search and Rescue Supplement to the International Aeronautical and Maritime Search and Rescue Manual, Version 2*. USCG | WASHINGTON DC 20593-7318. URL: https://www.dco.uscg.mil/Portals/9/CG-5R/nsarc/NSS_2018_Version/National%20SAR%20Plan%202018.pdf

7. Terms & Definitions

PSAP - Public Safety Answering Point – A call center that handles emergency calls and dispatches the appropriate emergency services.

SAR – Search and Rescue - is the search for and provision of aid to people who are in distress or imminent danger, or the resource groups used to search for said people.

TCOMM – Thurston 911 Communications - The answering point and dispatch center for all law enforcement, fire services, and Medic One in Thurston County.

8. Attachments

Attachment 1 – Thurston County SORT capabilities

Attachment 2 – Thurston County Dive Team capabilities

ATTACHMENT 1

THURSTON COUNTY SORT CAPABILITIES

Rescue Technician: Team members that have achieved the title of Rescue Technician on SORT have completed a minimum of the following training:

- Rope Rescue Technician 60+ hours
- Trench Rescue Technician 32-40 hours
- Confined Space Technician 32-40 hours
- Structural Collapse Operations 40-50 hours
- Additional Training:
- Tree Rescue Technician 24 hours
- Rope Rescue Specialist 70 hours
- Structural Collapse Technician 40-50 hours
- Ice Rescue Technician 16 hours
- Surface Water Rescue 24-32 hours

On Duty/Available Capability: On average there are 4-6 Rescue Technicians on duty and/or available every day.

Unit Locations:

Station 91

- R91: Rope/CS/Water Rescue Equipment/Tech Rescue IMS Kit/Light Tower/Portable Lights
- TR91: Structural and Trench Collapse Equipment

Station O1

- RO1: Rope/CS /Trench Equipment

Station 31

- Rescue Support 31: Rope/Water Rescue Equipment (LFD Asset)
 - *Jet Ski Trailer (LFD Asset)
 - *Rescue Boat/Trailer (LFD Asset)

Station 34

- RT31: Shoring Lumber and equipment

Rope Rescue:

- Low Angle Access, Rigging and Patient Movement
- High Angle Access, Rigging and Patient Movement
- Tree Rescue
- Tower Crane Rescue
- Backcountry Rescue
- Portable Lazy Leg Tripod
- Line Gun

Confined Space Rescue:

- Atmospheric Monitoring
- Ventilation
- Patient Package and Movement
- Con Space Hardwire Communications System
- Supplied Air Breathing Apparatus with 10 minute escape packs
- SCBAs
- Air Manifolds
- Non Entry Reach Poles
- Tripod

Trench Rescue:

- Ladders
- Pneumatic Shoring Equipment
- Lumber for Sheeting and Shoring Operations
- Spot Shoring Rails
- Hand Tools

Structural Collapse:

- Pneumatic and Mechanical Shoring Equipment
- Pneumatic Breaching Tools
- Electric Breakers
- Electric Saws
- Gas Rotary Saws with diamond wheels
- Gas Coring Tool
- Oxy Acetylene Torch
- Petrogyn Torch
- Air Compressor
- Pneumatic Nail Guns
- Search Camera
- Victim Locator Kit

- Talk Box
- Air Manifold for Tool Use

Water Rescue:

- PFDs & Throw Bags
- Hose Inflation Equipment
- Ice Rescue Suits
- Dry Suits
- Fins
- Ankle Weights
- Ice Awls
- Reach Poles
- Inflatable Rescue Craft with paddles
- Peterson Tube
- Carlson Board
- Rescue Strap
- Retrieval System

Patient Movement Equipment:

- Stokes Litter
- Break Apart Litter with backpack
- SKED
- Half Sked
- Spec. Pak
- Victim Harness
- Air Rescue Vest
- Class 5 Litter Spider
- Litter Wheel

Lacey Fire Department Water Rescue Program:

- 2 Jet Skis on Trailer
- Ice Rescue Suits
- Retrieval System
- Wet Suits
- Mask/Snorkel/Fins for Surface Subsurface Rescue
- Dive Rescue Gear

McLane Black Lake Fire Rescue Assets:

- 2 4 wheel ATVs
- 1 UTV

ATTACHMENT 2

THURSTON COUNTY SHERIFF'S OFFICE DIVE RESCUE TEAM

The team responds to water related incidents and provides the following capabilities:

Dive Rescue

- 14 Certified SCUBA divers
- USIA combat drysuits
- Individual crash stations include: AGA full face mask with communications, Buoyancy Control Device (BCD), Oceanic regulators and computers, pony bottle, Spare Air.
- Full diving capabilities to 100 foot depth including both compressed air tanks and surface supplied air
- Kongsberg single scan sonar
- Blue View multi-scan sonar
- Video Ray Remote Operation Vehicle (ROV) (mini submersible)
- Underwater pole camera
- 2 compressed air tank filling stations (1 fixed and 1 portable)
- Underwater metal detector
- 31 foot diving boat
- First aid and oxygen
- Generators

Swiftwater/Flood Rescue

- 15 Certified Swiftwater Technicians
- USIA surface drysuits
- 4 Zodiac boats
- 3 river rafts
- Rescue personal floatation devices (PFD)
- Throw bags

Rope Rescue

- 12 Certified Rope Rescue Technicians
- 2 – 600 foot ropes, 4 – 300 foot ropes
- Raising and lowering systems
- Patient packaging systems and stokes basket
- High line equipment for swiftwater diving