

Palominas Elementary School District

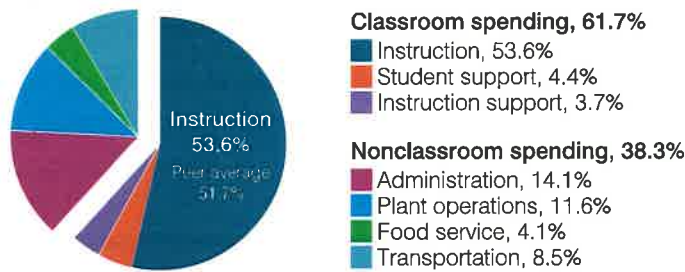
Cochise County
 Peer groups: Operational 9 and T-9, Achievement 16¹
 Legislative district(s): 14
 District location: Rural
 Number of schools: 3
 Graduation rate (2018): N/A

Students attending; Size: 852; Medium
 5-year change in students attending: 13% decrease
 Special education population: 13%
 English learner population: 3%
 Poverty rate (2018): 14%
 Free/reduced meal eligibility: 48%

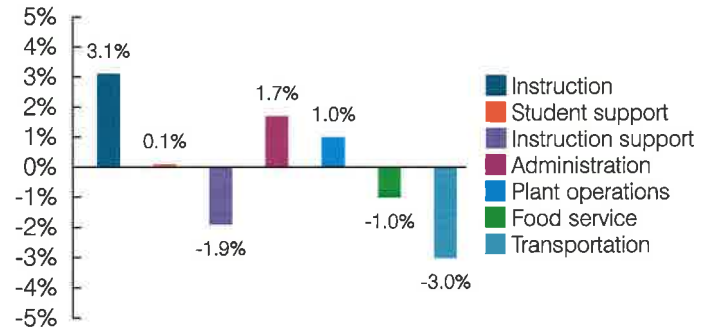
Instructional spending percentage by year

2001	2002	2003	2004	2005	2006	2007	2008	2009	2010	2011	2012	2013	2014	2015	2016	2017	2018	2019
55.4	54.9	54.2	55.7	54.3	55.6	55.5	55.9	54.1	53.8	51.5	50.3	51.1	50.5	52.9	53.9	52.1	52.2	53.6

Spending by operational area



Percentage point change in spending by operational area (fiscal year 2014 versus 2019)

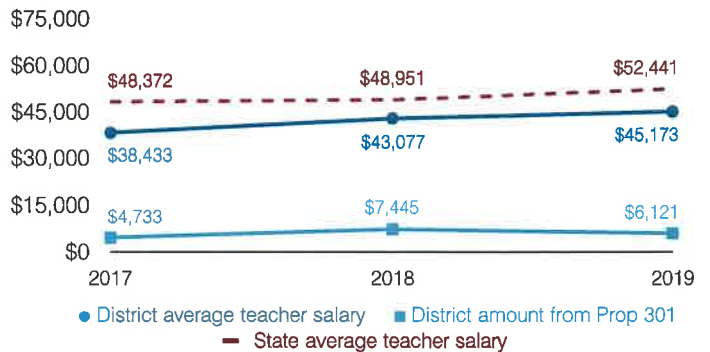


Operational measures relative to peer averages

Operational area	Measure	District	Peer average	State average
Administration	Cost per pupil	\$1,431	\$1,141	\$903
	Students per administrative position	45	60	66
Plant operations	Cost per square foot	\$7.71	\$6.68	\$6.49
	Square footage per student	152	161	158
Food service	Cost per meal	\$3.73	\$3.16	\$3.08
Transportation	Cost per mile	\$2.46	\$2.74	\$4.29
	Cost per rider	\$1,339	\$1,641	\$1,424

Very low | Low | Comparable | High | Very high

Average teacher salary and other measures

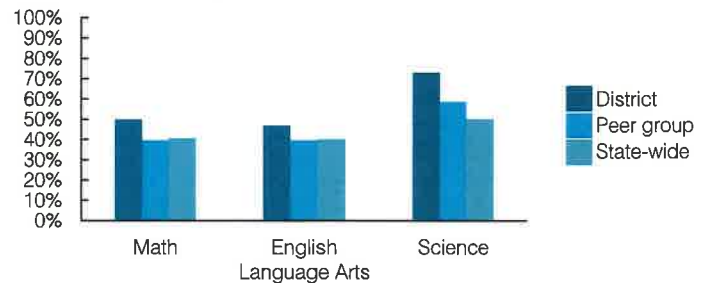


Per pupil spending

Spending by area	District		Peer average	State average
	2018	2019	2019	2019
Instruction	\$ 4,474	\$ 5,452	\$ 4,638	\$ 4,869
Student support	432	449	567	754
Instruction support	308	381	481	497
Administration	1,211	1,431	1,141	903
Plant operations	914	1,175	1,054	1,027
Food service	417	419	599	438
Transportation	807	864	498	417
Total operational	8,563	10,171	8,978	8,905
Land and buildings	480	1,071	265	1,086
Equipment	566	1,203	486	496
Interest	33	27	72	261
Other	54	67	134	180
Total nonoperational	1,133	2,368	957	2,023
Total per pupil spending	\$ 9,696	\$ 12,539	\$ 9,935	\$ 10,928

Measure	2017	2018	2019
Students per teacher	15.5	17.3	15.2
Average years of teacher experience	10.5	11.5	10.2
Percentage of teachers in first 3 years	13%	14%	19%

Students who passed State assessments²



¹ See Appendix A for information, such as districts included in each peer group, and Appendix B for sources and methodology.

² School letter grades are available at <https://azreportcards.azed.gov>.