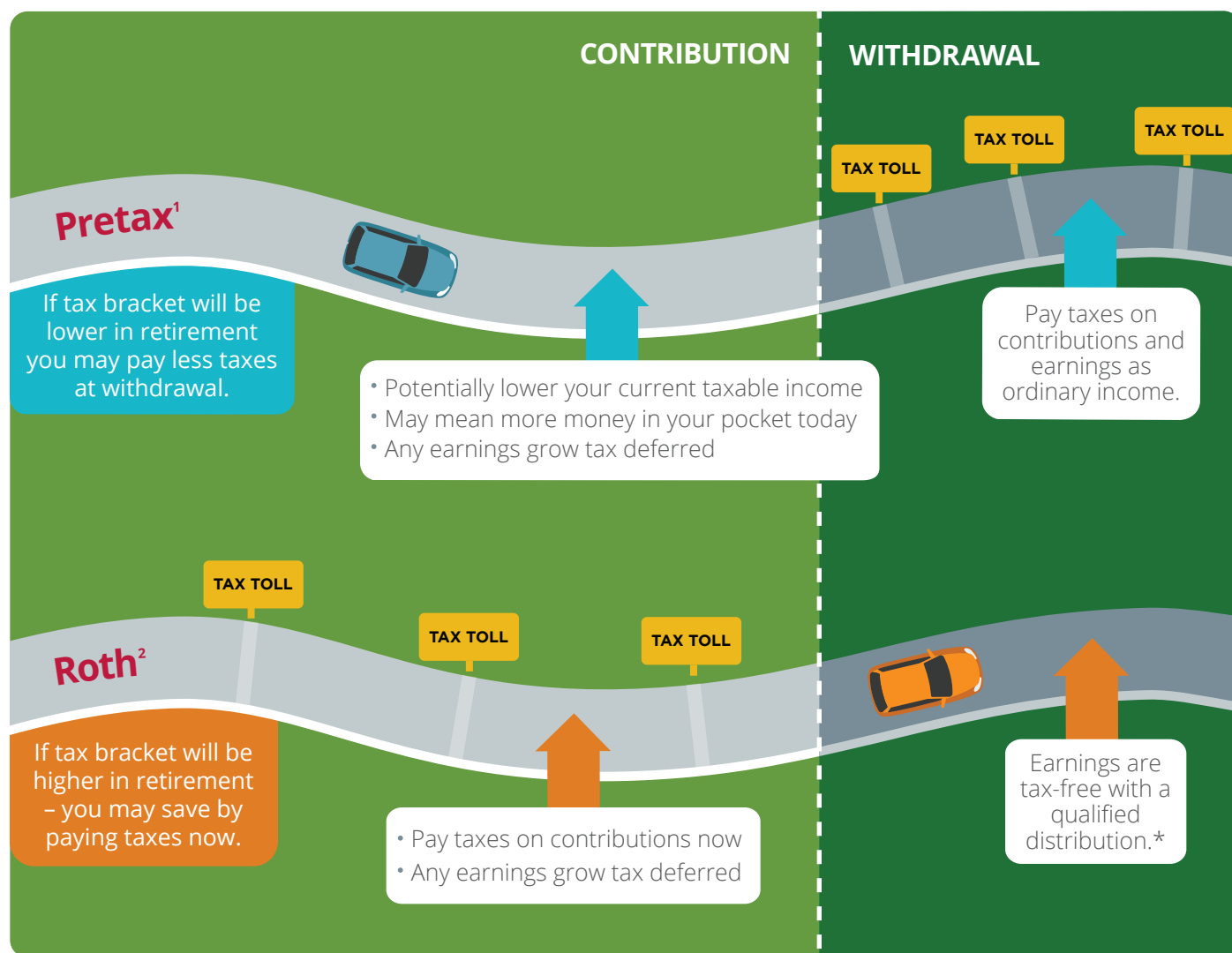


Pretax and Roth contributions

Wondering what the difference is? It's about when you have to pay taxes, and you'll need to determine which route is best for you. You can choose one or a combination of roads on your retirement journey.



¹ Contributions are made prior to tax withholding

² Contributions made after tax withholding

*Subject to requirements: Roth contributions must be in your account for at least five years and the money withdrawn after age 59½, death or disability. If distribution is not qualified, the earnings are taxed as ordinary income and may be subject to early withdrawal penalties.

Representatives of Empower Retirement do not offer or provide investment, fiduciary, financial, legal or tax advice, or act in a fiduciary capacity, for any client unless explicitly described in writing. Please consult with your investment advisor, attorney and/or tax advisor as needed.

Core securities, when offered, are offered through GWFS Equities, Inc. and/or other broker-dealers.

GWFS Equities, Inc., Member FINRA/SIPC, is a wholly owned subsidiary of Great-West Life & Annuity Insurance Company. Empower Retirement refers to the products and services offered in the retirement markets by Great-West Life & Annuity Insurance Company (GWL&A), Corporate Headquarters: Greenwood Village, CO; Great-West Life & Annuity Insurance Company of New York, Home Office: NY, NY; and their subsidiaries and affiliates. The trademarks, logos, service marks and design elements used are owned by their respective owners and are used by permission.

©2017 Great-West Life & Annuity Insurance Company. All rights reserved. AM86550-0117

NOW IS A GOOD TIME

Visit empoweringmymoney.com to learn more and view the glossary

