



Safe, Clean Water  
and Natural Flood Protection  
PRIORITY E

# South San Francisco Bay Shoreline Project

**PRIORITY E** Provide flood protection to homes, businesses, schools, streets and highways.

In partnership with



US Army Corps  
of Engineers



Valley Water



Coastal  
Conservancy



## Phase 1 construction underway

Valley Water, the State Coastal Conservancy and the U.S. Army Corps of Engineers (USACE) have begun Phase 1 construction of the South San Francisco Bay Shoreline Project between the Alviso Slough/Guadalupe River and Coyote Creek. The project, once completed, will protect north San José, including the community of Alviso and the Regional Wastewater Facility, from a 100-year coastal storm and rising seas.

The USACE is constructing the first portion of the project, comprised of Reaches 1-3. Reach 1 begins at the Alviso Marina County Park and ends at the Union Pacific Railroad. Reaches 2 and 3 run from the railroad to the Artesian Slough. The project activities will occur primarily along Alviso Marina County Park and U.S. Fish and Wildlife Service (USFWS) Alviso Refuge lands, with work hours Monday through Friday, from 7 a.m. to 5:30 p.m. and on weekends if necessary, excluding holidays.

Phase 1 construction is scheduled to finish in January 2024.

## Project Highlights



Soil delivered to Pond A12 for levee construction.

- Reduce coastal flood risk
- Provide FEMA certifiable coastal levees
- Restore tidal marsh habitat
- Adapt to sea level change
- Connect to regional trail system
- Provide pedestrian bridges and observation platforms

## Your tax dollars at work



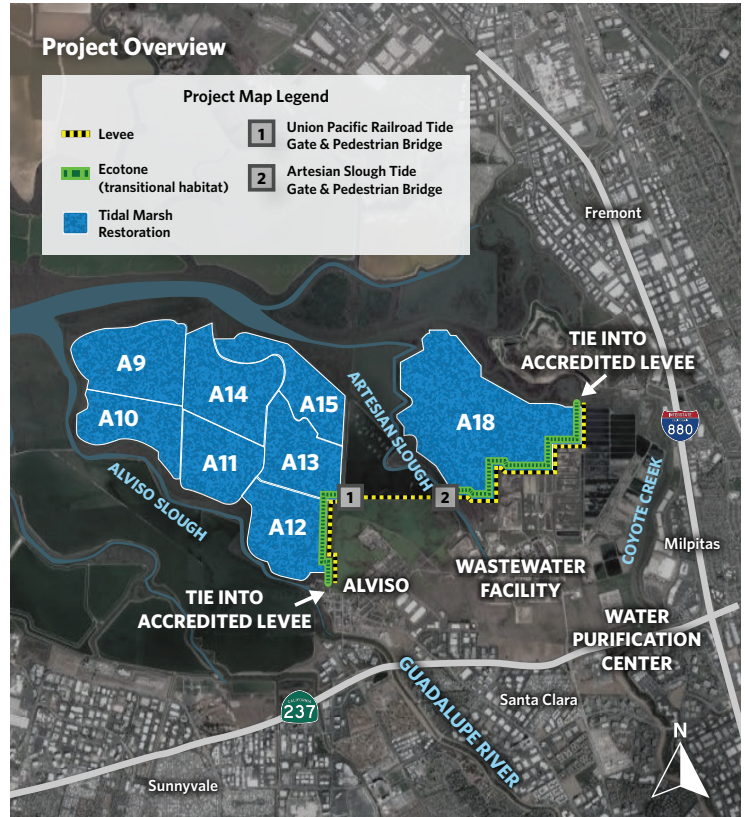
US Army Corps  
of Engineers



Valley Water



and Natural Flood Protection



## Get more information

The South San Francisco Bay Shoreline Project is the latest construction effort by Valley Water and the USACE. Over the years, the partnership has resulted in successful flood protection projects throughout Santa Clara County. Other partners in this effort include the State Coastal Conservancy and U.S. Fish and Wildlife Service.

For more information about this work, please contact Deputy Operating Officer Bhavani Yerrapotu at **408-630-2735** or [byerrapotu@valleywater.org](mailto:byerrapotu@valleywater.org). To learn more about this project visit <https://delivr.com/2ff7v>.



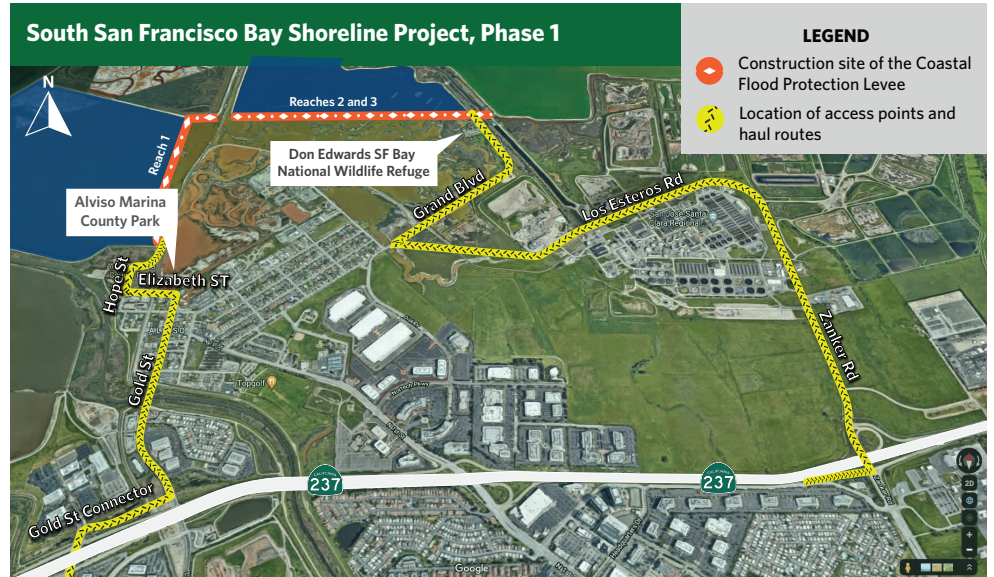
Thank you in advance for your patience during the construction of the San Francisco Bay Shoreline Project.

## South San Francisco Bay Shoreline Project



### Construction Haul Routes

Trucks entering the construction site from the Alviso Marina County Park will use State Route 237 to Lafayette Street/ Great America Parkway to the Gold Street connector to Elizabeth Street. From there, they'll take Hope Street and then use the easternmost county park maintenance access road. Trucks that enter and exit the construction site from the Don Edwards National Wildlife Refuge Visitor Center will use State Route 237 to Zanker Road/Los Esteros Road to Grand Boulevard.



### Trail Impacts

Pedestrian access to Pond A12 or A13 from the northeasterly existing berm and Pond A16 and A17 Mallard Slough Trail is temporarily closed due to active construction. Trail closure is necessary to ensure public safety during construction. Access to Ponds A9, A10, A11, A14 and A15 is only available from the northwesterly Pond A12 berm. These trail closures are in effect through early 2024, when construction is anticipated to conclude.

When Phase 1 of the South San Francisco Bay Shoreline Project is completed, it will help reduce coastal flood risk for about 5,500 residents, commuters and businesses in North San José and Alviso, as well as the San José-Santa Clara Regional Wastewater facility and the Silicon Valley Advanced Water Purification Center. The area is at risk of flooding from extreme storms and high tides, and this risk will increase as sea levels rise. The project will also restore and enhance 2,900-acres of tidal marsh and related habitat that were lost due to former salt pond production activities and improve recreational and public access along the bay shoreline.

