



Valley Water

Clean Water • Healthy Environment • Flood Protection

One Water Overview and Upper Pajaro River Watershed Plan

Dámaris Villalobos-Galindo, Associate Civil Engineer, PE, CFM

Agricultural Water Advisory Committee Meeting
July 11, 2022

Agenda

- Meeting Objectives
- Overview of One Water
- Upper Pajaro River Watershed Plan Update
- Stakeholders and Opportunities for Engagement

HANDOUT: AGENDA ITEM 4.2.



Valley Water

Clean Water • Healthy Environment • Flood Protection

Meeting Objectives

- Inform where we are in the planning effort
- Importance of stakeholder input
- Present initial survey results
- Obtain specific input on stakeholder priorities

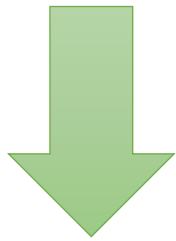


One Water Overview

Integrated long term master plan and prioritization process which will enable us to allocate resources where needed the most by identifying priority actions based on objective metrics and achievable targets



Two parts



Countywide Framework

Provides overall vision, goals and objectives as guidance for all plans



Watershed Level Plans

Specific Plans for each of the five watersheds

Vision, Integrated Goals and Measurable Objectives

Vision

Manage Santa Clara County water resources **holistically** and **sustainably** to benefit **people** and the **environment** in a way that is informed by **community values**

Integrated Goals

Reliable Water Supply

Improved Flood Protection

Healthy and Resilient Ecosystems

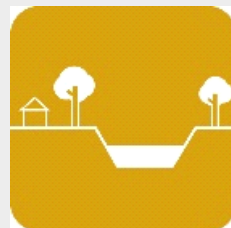
Measurable Objectives



Water Supply



Water Quality



Flood Risk Reduction



Natural Ecosystem



Climate Change

Stakeholders

- External Subject Matter Experts
- Municipalities/Land Use Agencies
- Educational Institutions
- Residents/Community Based Organizations
- Water Resource Agencies and Special Districts
- Special Joint Organizations/Coalitions
- Governing Bodies/Regulatory Agencies
- Open Space Conservation/Recreation
- Economic Vitality and Sustainability
- Environmental
- Agricultural

- Agri-culture
- Agriculture and Land Based Training Association (ALBA)
- American Farmland Trust
- California FarmLink
- California Farm Water Coalition
- California Women for Agriculture
- Santa Clara County Farm Bureau
- Santa Clara County Division of Agriculture
- Sustainable Agriculture Education (SAGE)
- Veggielution
- Ecological Farmland Association (Eco-Farm)



HANDOUT: AGENDA ITEM 4.2.

11 Cohorts

**104
Organizations/Agencies**

209 Individual Contacts

Watershed Plans Schedule

Coyote

Upper Pajaro
Guadalupe

West Valley
Lower Peninsula



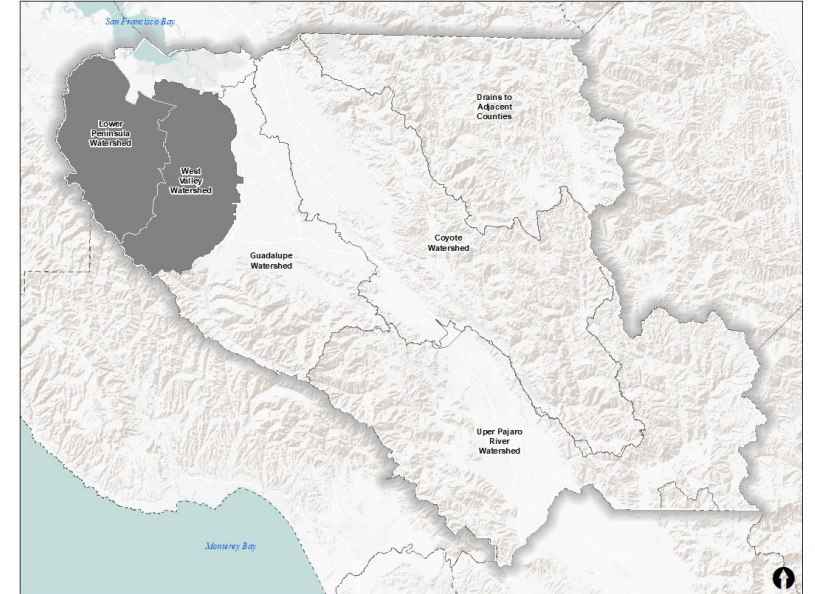
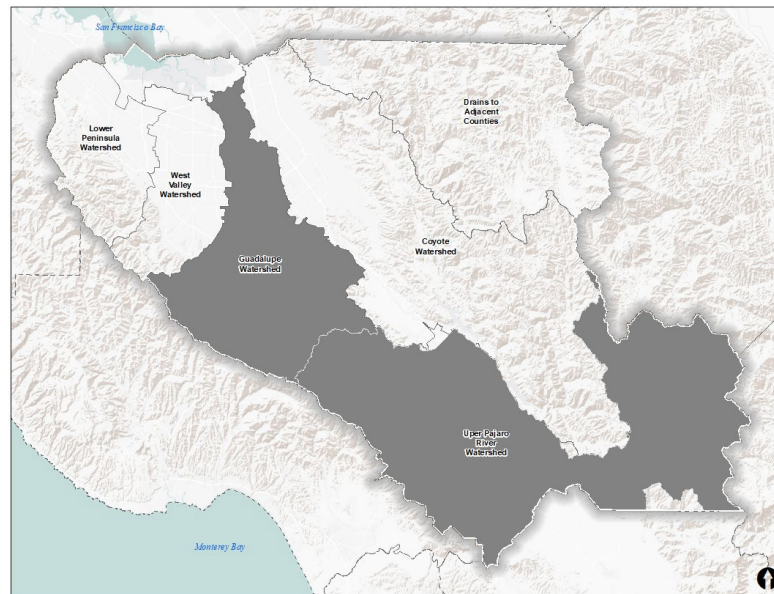
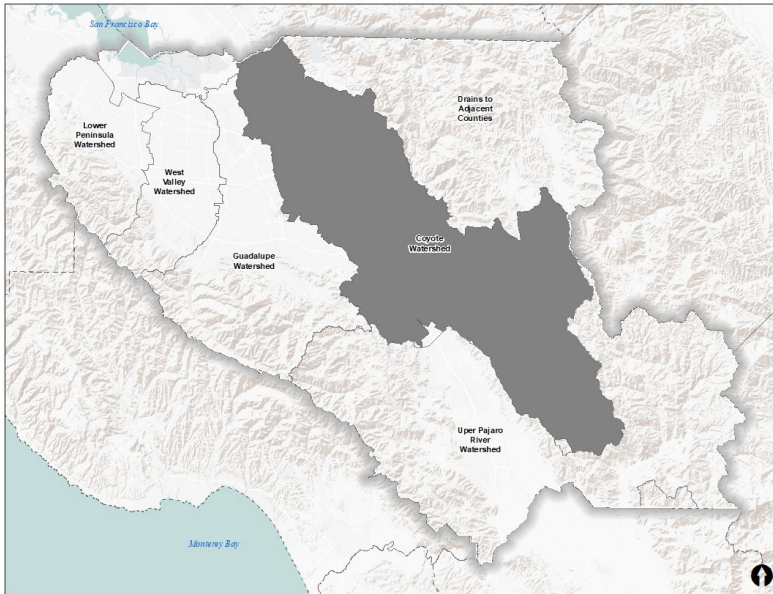
2021



2022

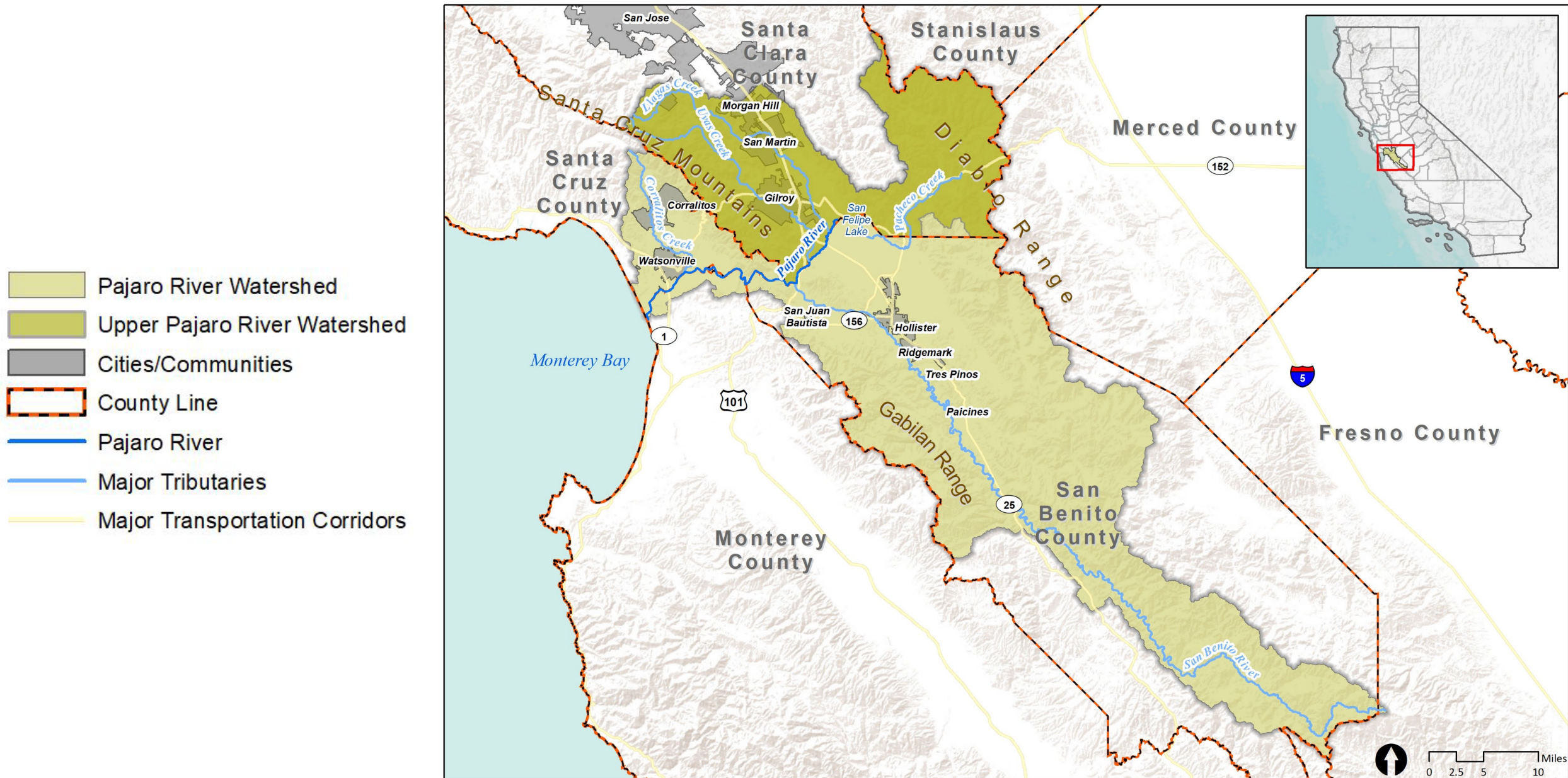


2023



Pajaro River Watershed




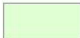






HANDOUT: AGENDA ITEM 4.2.

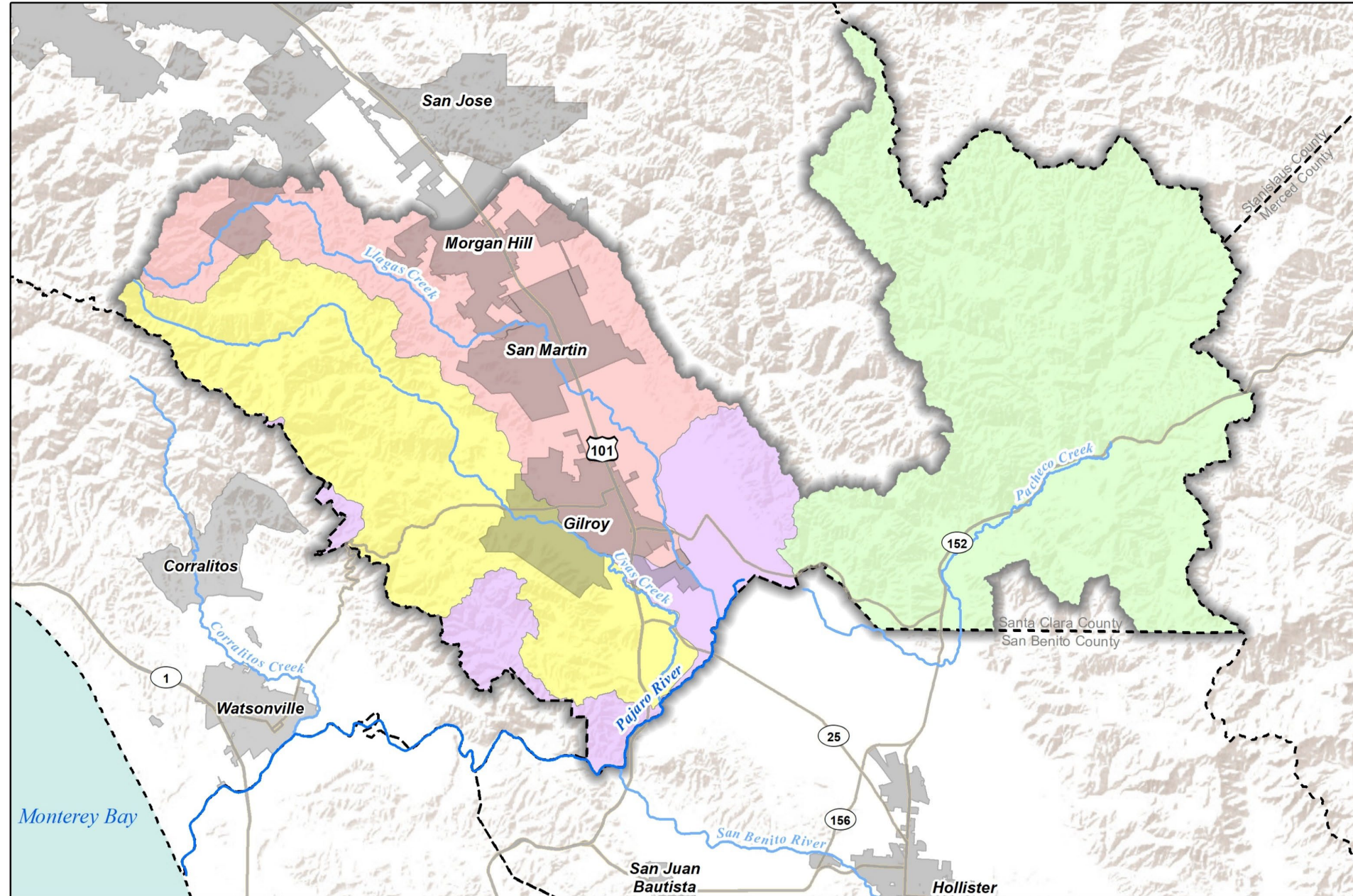


Upper Pajaro River Watershed

HANDOUT: AGENDA ITEM 4.2.

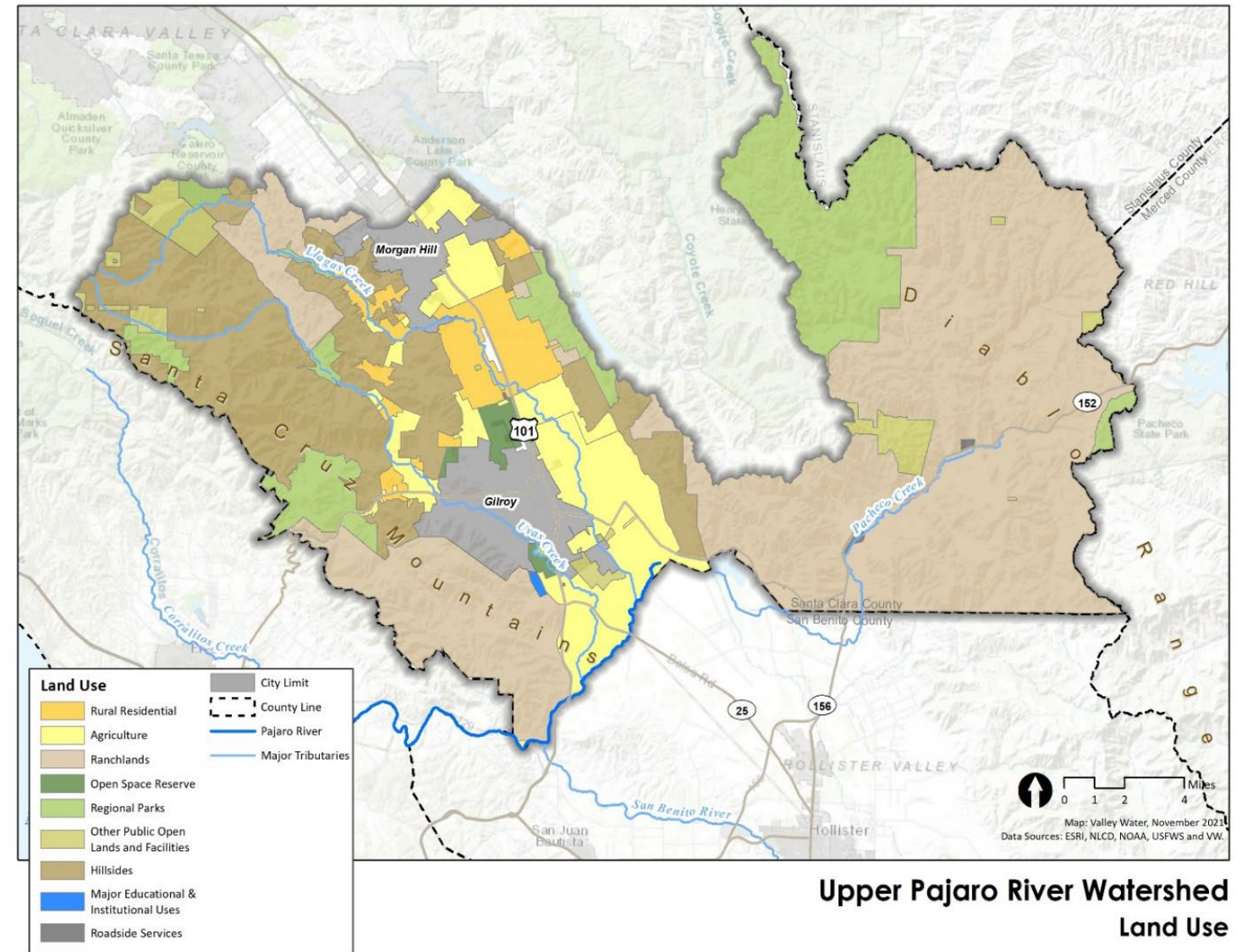
Subwatersheds

-  Pajaro River
-  Uvas Creek
-  Llagas Creek
-  Pacheco Creek
-  Upper Pajaro River Watershed
-  Cities/Communities
-  County Line
-  Major Tributaries
-  Pajaro River
-  Major Transportation Corridors



Land Use

- Ranchlands – 45%
- Farmland – 9%
- Open Space (Parks/Conservation) – 16%
- Urban – 8%
- Rural Residential – 4%

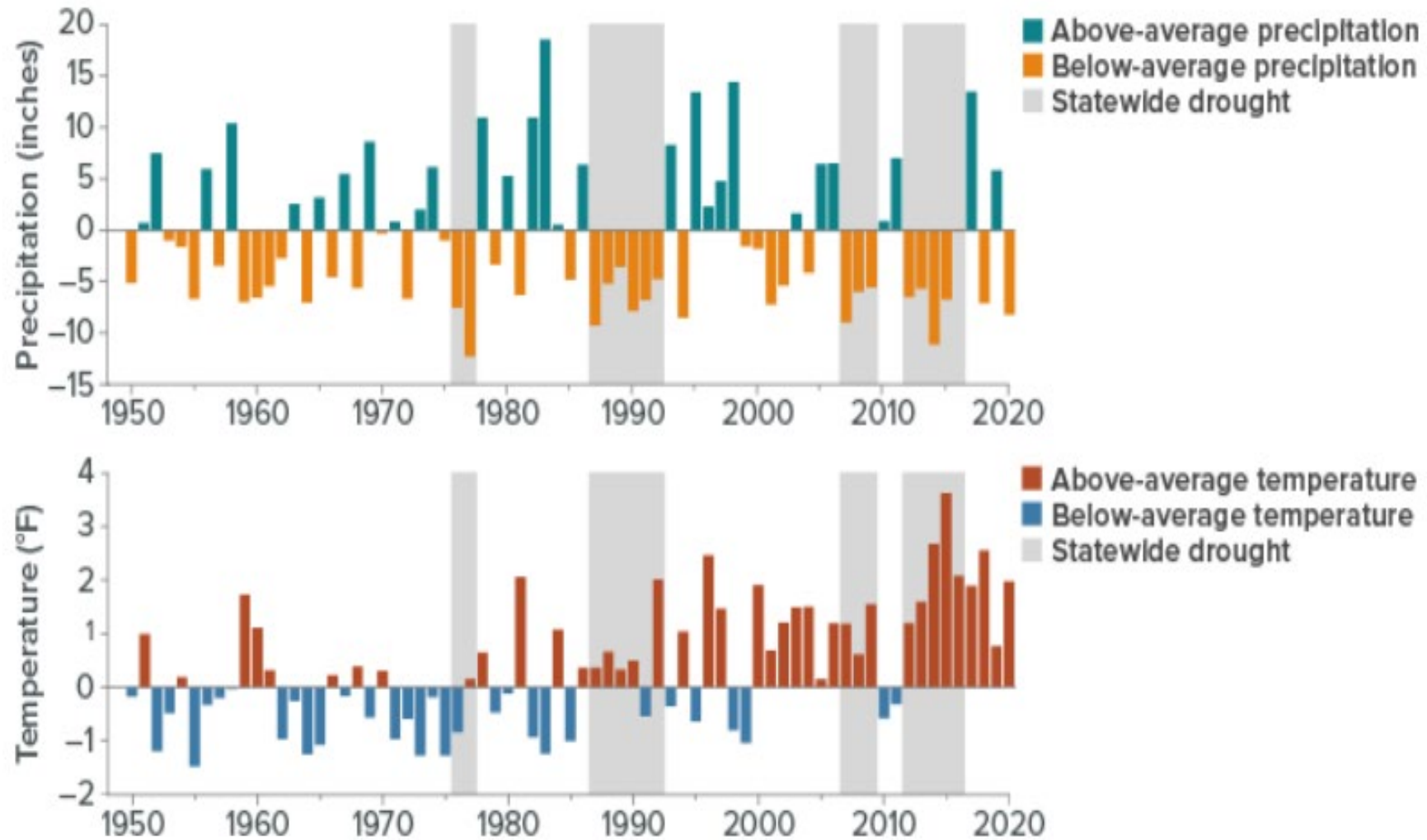


Farmland and Rangeland

- Working lands cover approx. 333,000 acres of UPR or about 54%
- Support approx. 8,100 jobs
- Contribute approx. \$830 million dollars annually to region's economy

Agriculture and Water Supply Challenges

Drought



Agriculture and Water Quality Challenges

- Sediment and nutrients
- Health of livestock and viability of agricultural crops



Agriculture and Flood Risk Challenges/Opportunities

Challenges

- Crop loss
- Nutrients flowing into water bodies
- Soil erosion and bank instability
- Debris deposition
- Spread of invasive species

Opportunities

- Conserve agricultural lands
- Protect floodplain areas
- Floodplains provide fertile soil for agriculture
- Flood Managed Aquifer Recharge (FloodMAR)

Agriculture and Natural Ecosystems Challenges

Farming and ranching additional ecological services:

- Open working lands
- Wildlife habitat and connectivity
- Recreational Opportunities
- Educational benefits (farm to table)
- Social Benefits
-

**High quality farmland converted to urban land use from 1990-2004, top 10 counties
(Adapted from American Farmland Trust, 2009)**

| County | Acres | Total Land Area (%) | Rate of Loss (Ac/Yr) |
|----------------|---------|---------------------|----------------------|
| San Joaquin | 14,888 | 1.6 | 1,063 |
| Riverside | 14,5551 | 0.3 | 1,039 |
| Fresno | 12,524 | 0.3 | 895 |
| Kern | 12,025 | 0.2 | 859 |
| Stanislaus | 10,189 | 1.1 | 728 |
| Tulare | 8,758 | 0.2 | 626 |
| San Bernardino | 7,379 | 0.1 | 527 |
| Orange | 6,533 | 1.1 | 467 |
| Santa Clara | 6,233 | 0.8 | 445 |
| Kings | 5,170 | 0.6 | 369 |

Agriculture and Natural Ecosystem Opportunities/Challenges

Challenges

- Impacts to surface water, groundwater, and soil
- Loss of high-quality farmland to urbanization
- Increase of hardscape vs softscape

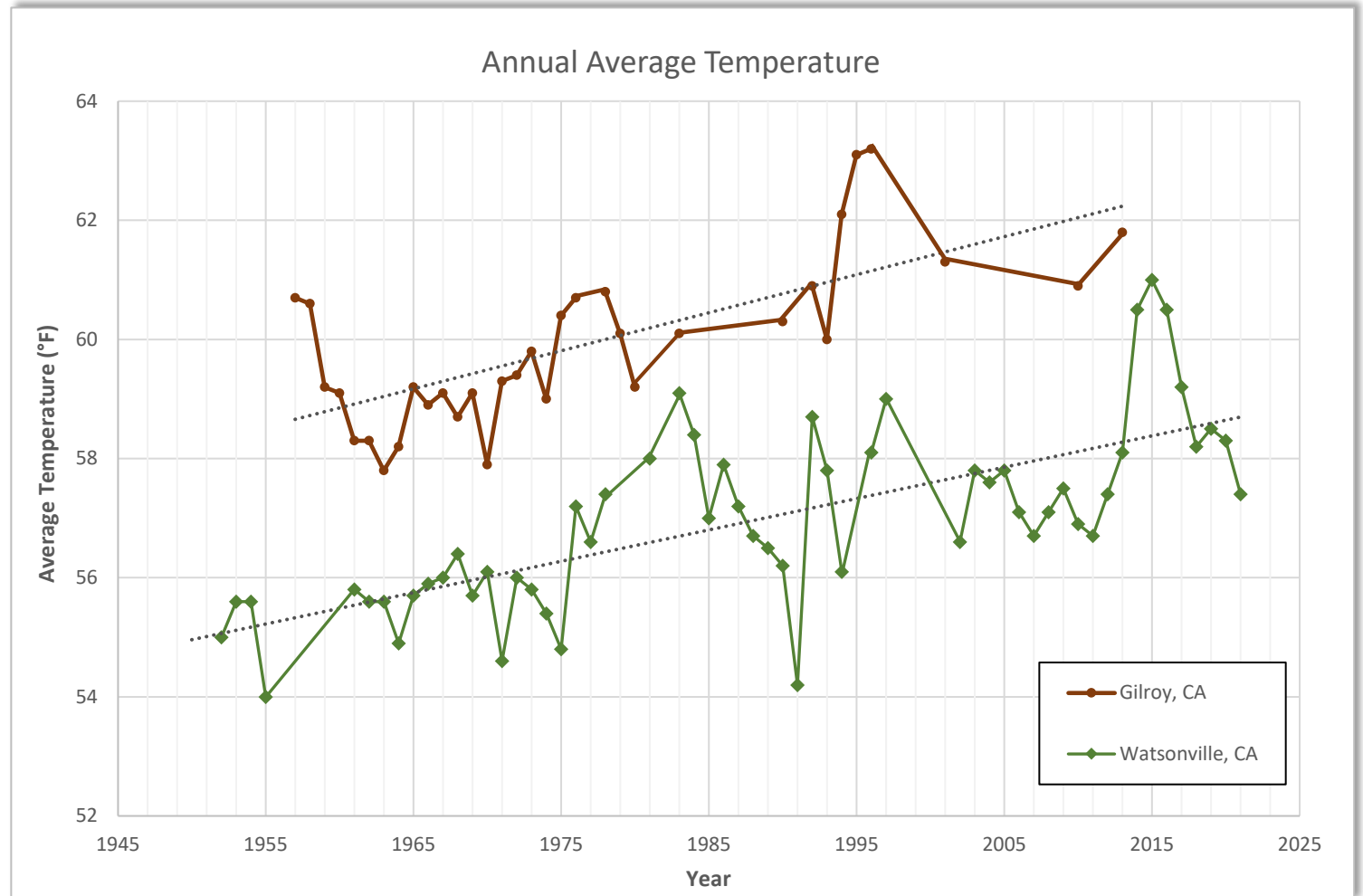
Opportunities

- Reduction in Greenhouse Gas Emissions
- Provide for wildlife habitat and biodiversity
- Sustainable farmland practices
- Farmland conservation

Agriculture and Climate Change

Challenges

- Increased average, minimum, and maximum temperatures
- More frequent and longer-lasting heat waves in the summer
- Reduced precipitation and increase in extreme weather events
- Decreased winter snowpack



Initial Stakeholder Survey Results

Sent Survey to

180

INDIVIDUALS

37

RESPONDED

20%

RESPONDED

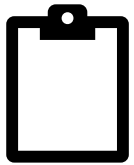


You can find the survey here:

<https://www.surveymonkey.com/r/HFT7WFT>

Upper Pajaro River Watershed - Stakeholder Engagement

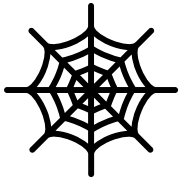
Stakeholder Approach: Broad community engagement to seek specific interest and knowledge of water resource challenges and opportunities



[Survey](#)



Focused Meetings with Cohorts, Committees, and Community Groups



**Valley Water - Upper Pajaro River Watershed Plan – [Be Heard Website](#)
General One Water Information - [One Water page](#)**

Upper Pajaro River Watershed Fact Sheet - see *Attachment 2*

Thanks for Your Input and Questions!

