

vitalware®

# CLIENT APPRECIATION WEEK





**Jason Jones**

PhD: Health Catalyst Chief Data Scientist

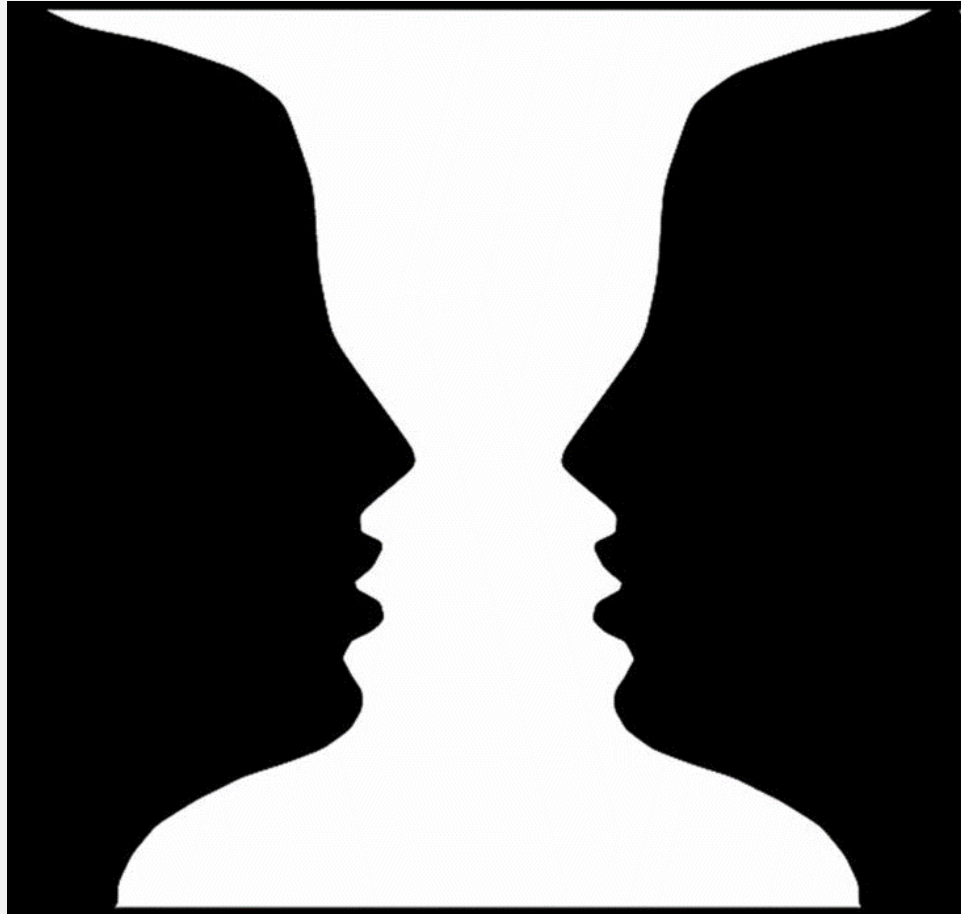


**Adam Ziegel**

Product Manager

# **Find Focus and Monitor Change with Augmented Intelligence**

# What do you see?



Confidential • Do not distribute • ©Copyright Vitalware, LLC. All rights reserved.

**vitalware®**

# What Leaders Need to Make Better Decisions

## Separate Signal from Noise

- Is this hospital better than that one?
- Have we improved over time?
- If we set an improvement goal, is it statistically different from current performance?

## Focus on the Future

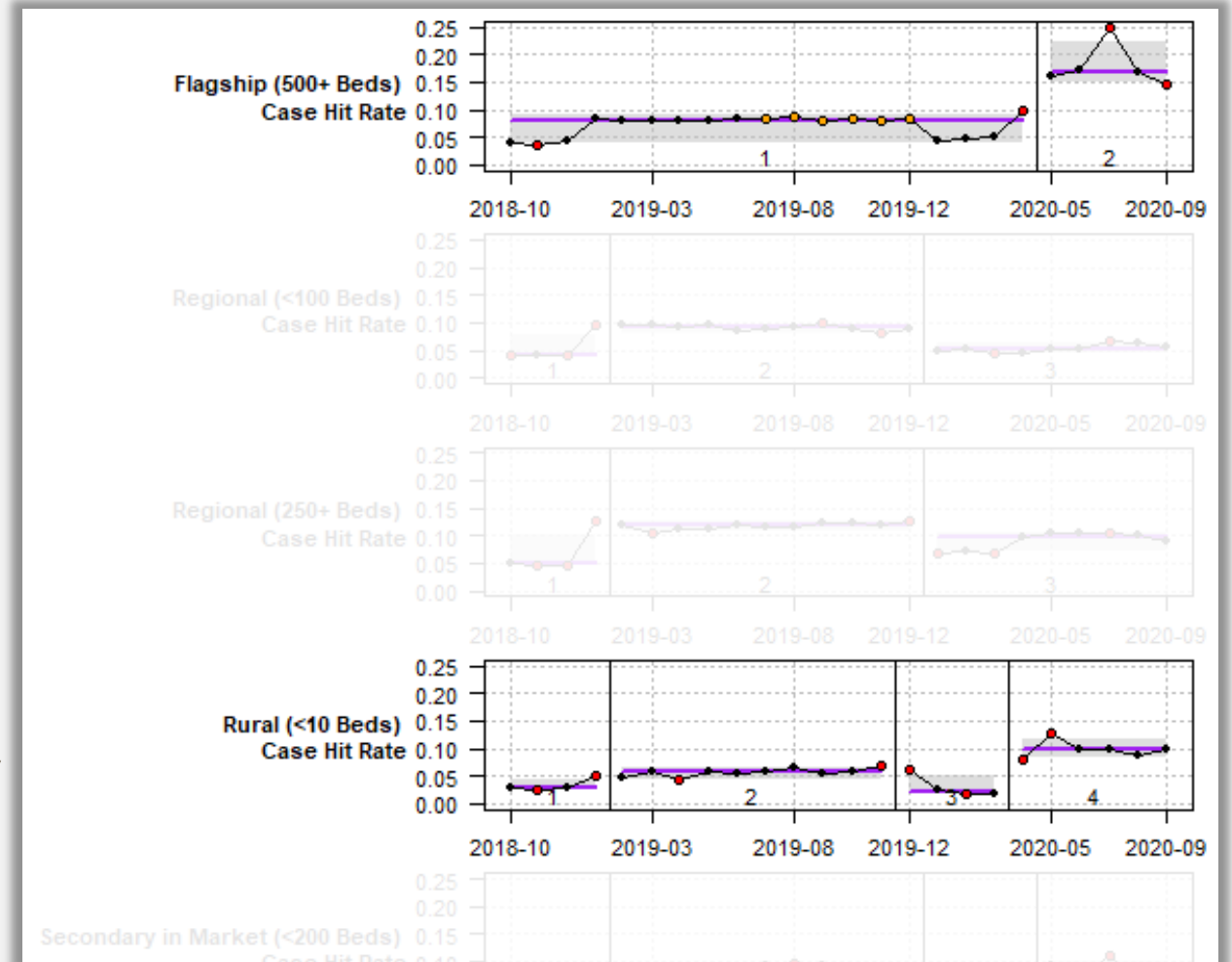
- Where will we be in a year?
- Are we satisfied with that?
- If not, what will we change, and when can we expect to see the result?
- If we are satisfied, is performance sustainable?



# Separating Signal from Noise

## Statistical Process Control ++

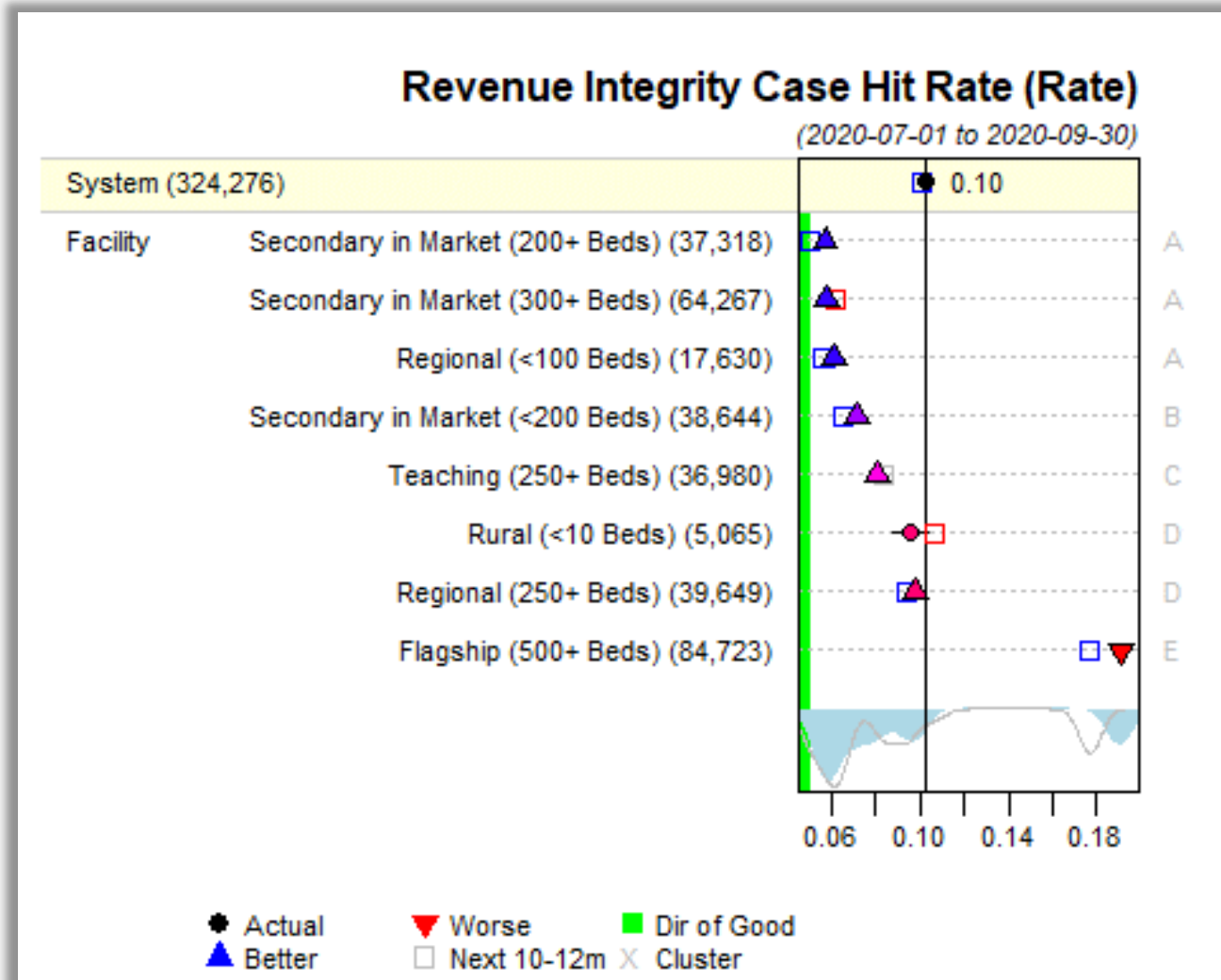
- Take 24 months of history
- Algorithms point to:
  - Segments of consistent performance (vertical lines)
  - Outlying points (red)
  - Unlikely sequences (orange)
- Both hospitals have more hits since April/May—new coding delays and costly duplicate claim submissions?
- Rural more stable



# Separating Signal from Noise & Future Focus

## Forest Plot

- Same data
- Cluster hospitals into similar performance
- Which are different from “system”
- Forecast 1 year out
- Rural getting slightly worse
- Flagship improving

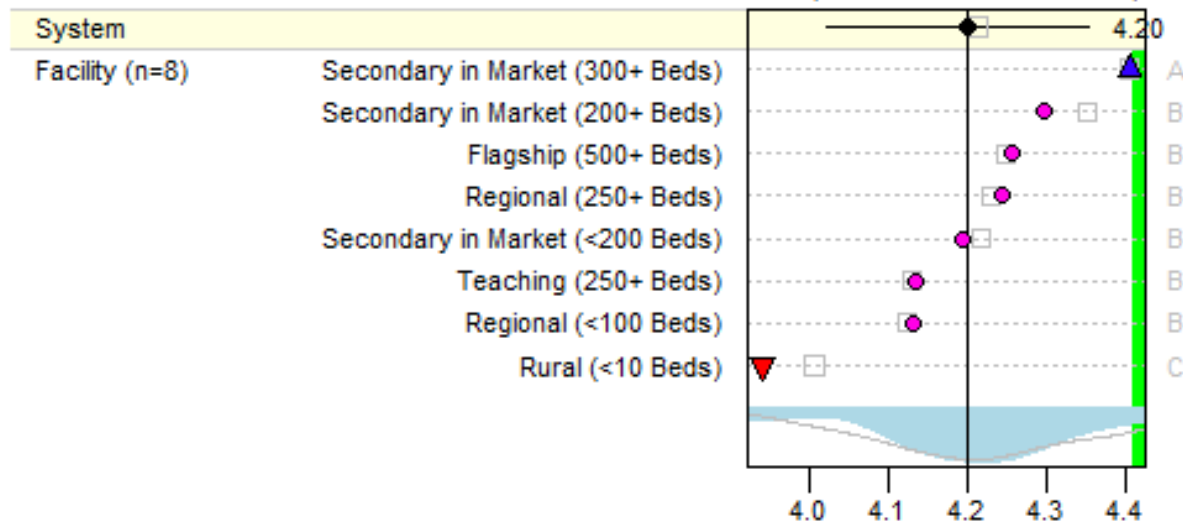


# What Is “Good” in the ED?

- Secondary 200-300 bed hospitals have different E/M levels and rates—why?
- E/M rates lower in Flagship and Teaching—different case mix important for interpreting other data?
- E/M levels are low and rates high in rural hospital—access?
- E/M levels rising in Rural—COVID-19?

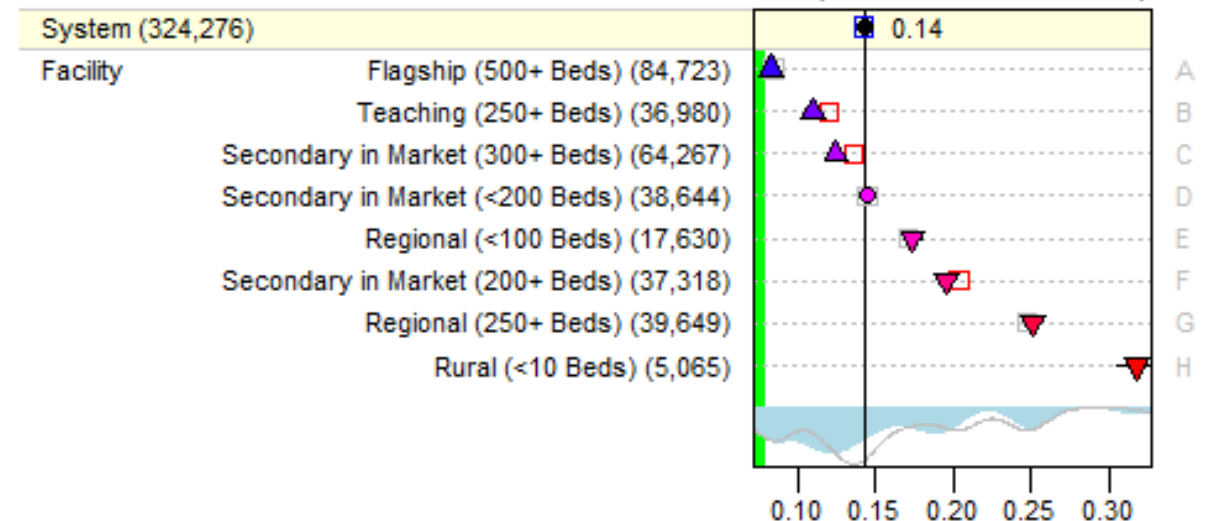
**Average ED E/M Level (Value)**

(2020-07-01 to 2020-09-30)



**ED E/M Encounter Rate (Rate)**

(2020-07-01 to 2020-09-30)







# Questions?

vitalware®

# CLIENT APPRECIATION WEEK

