

vitalware®

2021 CPT® Updates

CDM Focused



Jennifer Bishop
RHIT, CCS, CCS-P, CHRI, CIRCC

Disclaimer Statement

This presentation was current at the time it was published or provided via the web and is designed to provide accurate and authoritative information in regard to the subject matter covered. The information provided is only intended to be a general overview with the understanding that neither the presenter nor the event sponsor is engaged in rendering specific coding advice. It is not intended to take the place of either the written policies or regulations. We encourage participants to review the specific regulations and other interpretive materials as necessary.

All CPT® codes are trademarked by the American Medical Association (AMA) and all revenue codes are copyrighted by the American Hospital Association (AHA).

Overview of 2021 Changes

CPT® Section	Additions	Deletions	Revisions
Evaluation & Management	2	1	17
Anesthesia	0	0	0
Surgery	11	11	28
Radiology	2	2	5
Pathology & Laboratory	34	1	8
Medicine	18	9	4
Category II	0	0	0
Category III	20	22	0
PLA	13	0	0
Totals	100	46	62

- Totals do not include codes added, deleted, or revised in CY 2020 but appearing for the first time in the CY 2021 book
- Revised totals do not include codes with changes to short or medium descriptions only and also do not include codes with changes in non-essential punctuation only

Changes to Radiology Section

© Original Artist
Reproduction rights obtainable from
www.CartoonStock.com



search ID: dcm302

Dave Coverly

"I'd like to take some x-rays to
determine if there is a problem
or if you're just being a big baby."

New Codes - Radiology

New CPT Code For Lung Cancer Screening

- 71271 – Computed tomography, thorax, low dose for lung cancer screening, without contrast material(s)
- Created to establish a permanent CPT code as an alternative to HCPCS code G0297, which was created by CMS in 2015
- Patients should meet the following criteria:
 - Ages 55-80
 - Smoking history of greater than 30 pack years
 - Currently smoking or quit less than 15 years ago
 - Smoking cessation counseling should be done
 - Entered into a Lung Cancer Screening Registry

New Codes - Radiology

New CPT Code For Evaluation of Radiation Exposure

- 76145 – Medical physics dose evaluation for radiation exposure that exceeds institutional review threshold, including report
- Describes dose calculation after a diagnostic or therapeutic endovascular procedure, and is usually performed by a hospital-employed medical physicist
 - Doses above 5 Gray are potentially significant
 - Doses above 10 Gray are considered sentinel events

Deleted Codes - Radiology Section

Deleted Code	Suggested Replacement Codes
76970 – Ultrasound study follow-up (specify)	No valid indication for this service; see ultrasound section to report appropriate exam based on site studied
78135 – Red cell survival study; differential organ/tissue kinetics (eg, splenic and/or hepatic sequestration)	78130 – Red cell survival study 78199 – Unlisted hematopoietic, reticuloendothelial and lymphatic procedure, diagnostic nuclear medicine

Revised Codes - Radiology

CPT Code	2021 Long Description	2020 Long Description
71250	Computed tomography, thorax, <u>diagnostic</u> ; without contrast material	Computed tomography, thorax; without contrast material
71260	Computed tomography, thorax, <u>diagnostic</u> ; with contrast material(s)	Computed tomography, thorax; with contrast material(s)
71270	Computed tomography, thorax, <u>diagnostic</u> ; without contrast material, followed by contrast material(s) and further sections	Computed tomography, thorax; without contrast material, followed by contrast material(s) and further sections

Revised Codes - Radiology

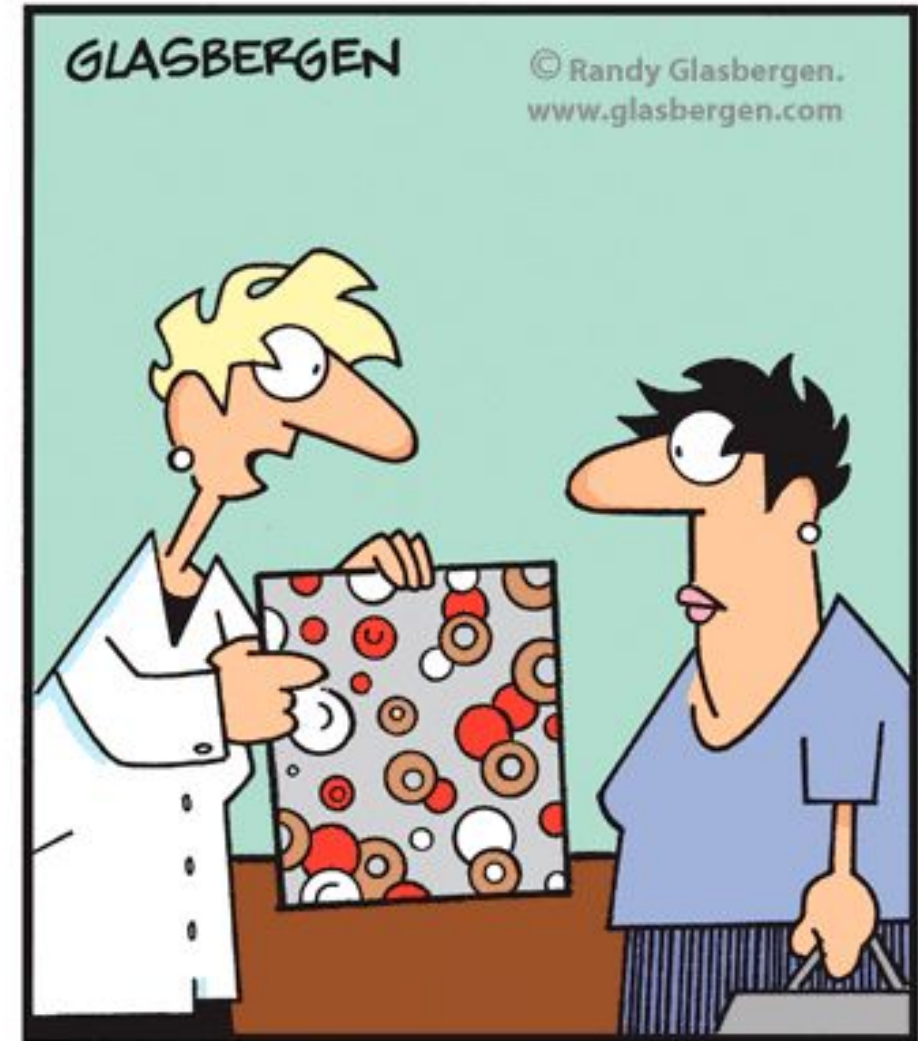
CPT Code	2021 Long Description	2020 Long Description
74425	Urography, antegrade, radiological supervision and interpretation	Urography, antegrade (pyelostogram, nephrostogram, loopogram) , radiological supervision and interpretation
76513	Ophthalmic ultrasound, diagnostic; anterior segment ultrasound, immersion (water bath) B-scan or high resolution biomicroscopy, <u>unilateral or bilateral</u>	Ophthalmic ultrasound, diagnostic; anterior segment ultrasound, immersion (water bath) B-scan or high resolution biomicroscopy

New Guidelines – Radiology

Diagnostic Imaging of the Heart

- Cardiac CT and CTA services (75571-75574) include images obtained, 2D and 3D reformatted images, and cine review
- Contrast-enhanced CT and CTA services (75572-75574) include conventional quantitative assessment(s), including coronary percentage stenosis, ventricular volume, ejection fraction, and stroke volume
- Only one CT/CTA of the heart should be reported per encounter

Changes to Laboratory & Pathology Section



**“The red circles are your red blood cells.
The white circles are your white blood cells.
The brown circles are donuts. We need to talk.”**

Added Codes – Drug Assays

10 New Codes for Therapeutic Drug Assay

- 80143 – Acetaminophen
- 80151 – Amiodarone
- 80161 – Carbamazepine; -10,11-epoxide
- 80167 – Felbamate
- 80179 – Salicylate
- 80181 – Flecainide
- 80189 – Itraconazole
- 80193 – Leflunomide
- 80204 – Methotrexate
- 80210 - Rufinamide

New Guidelines – Definitive Drug Testing

- Definitive drug procedures that are not specified in 80320-80373 should be reported using the unlisted definitive procedure codes 80375-80377 unless the specific analyte is listed in Therapeutic Drug Assays (80143-80203) or Chemistry (82009-84830) sections

New Guidelines – Definitive Drug Classes Listing

- Therapeutic drug assays are performed to monitor levels of a known, prescribed, or over-the-counter medication
- Listing of definitive drug classes is not comprehensive; FDA drug classification should be used when possible
- Any metabolites not listed should be categorized with the parent code drug
- Drugs and metabolites not listed may be reported using codes 80143-80299 (Therapeutic Drug Assay) or 82009-84999 (Chemistry)

Added Codes – Molecular Pathology

16 new codes as a result of procedures being moved from Tier II to Tier I procedures

- 81168 - CCND1/IGH (t(11;14)) (eg, mantle cell lymphoma) translocation analysis, major breakpoint, qualitative and quantitative, if performed
- 81191 - NTRK1 (neurotrophic receptor tyrosine kinase 1) (eg, solid tumors) translocation analysis
- 81192 - NTRK2 (neurotrophic receptor tyrosine kinase 2) (eg, solid tumors) translocation analysis
- 81193 – NTRK3 (neurotrophic receptor tyrosine kinase 3) (eg, solid tumors) translocation analysis
- 81194 – NTRK (neurotrophic-tropomyosin receptor tyrosine kinase 1, 2, and 3) (eg, solid tumors) translocation analysis

Added Codes – Molecular Pathology

16 new codes as a result of procedures being moved from Tier II to Tier I procedures

- 81278 - IGH@/BCL2 (t(14;18)) (eg, follicular lymphoma) translocation analysis, major breakpoint region (MBR) and minor cluster region (mcr) breakpoints, qualitative or quantitative
- 81279 - JAK2 (Janus kinase 2) (eg, myeloproliferative disorder) targeted sequence analysis (eg, exons 12 and 13)
- 81338 - MPL (MPL proto-oncogene, thrombopoietin receptor) (eg, myeloproliferative disorder) gene analysis; common variants (eg, W515A, W515K, W515L, W515R)
- 81339 – MPL (MPL proto-oncogene, thrombopoietin receptor) (eg, myeloproliferative disorder) gene analysis; sequence analysis, exon 10

Added Codes – Molecular Pathology

16 new codes as a result of procedures being moved from Tier II to Tier I procedures

- 81347 - SF3B1 (splicing factor [3b] subunit B1) (eg, myelodysplastic syndrome/acute myeloid leukemia) gene analysis, common variants (eg, A672T, E622D, L833F, R625C, R625L)
- 81348 - SRSF2 (serine and arginine-rich splicing factor 2) (eg, myelodysplastic syndrome, acute myeloid leukemia) gene analysis, common variants (eg, P95H, P95L)
- 81351 - TP53 (tumor protein 53) (eg, Li-Fraumeni syndrome) gene analysis; full gene sequence
- 81352 – TP53 (tumor protein 53) (eg, Li-Fraumeni syndrome) gene analysis; targeted sequence analysis (eg, 4 oncology)

Added Codes – Molecular Pathology

16 new codes as a result of procedures being moved from Tier II to Tier I procedures

- 81353 - TP53 (tumor protein 53) (eg, Li-Fraumeni syndrome) gene analysis; known familial variant
- 81357 - U2AF1 (U2 small nuclear RNA auxiliary factor 1) (eg, myelodysplastic syndrome, acute myeloid leukemia) gene analysis, common variants (eg, S34F, S34Y, Q157R, Q157P)
- 81360 - ZRSR2 (zinc finger CCCH-type, RNA binding motif and serine/arginine-rich 2) (eg, myelodysplastic syndrome, acute myeloid leukemia) gene analysis, common variant(s) (eg, E65fs, E122fs, R448fs)

New Guidelines – Molecular Pathology

Tier II Molecular Pathology Procedures

- Use the molecular pathology procedure level code that includes the specific analyte listed after the code descriptor
- Use 81479 if not listed under one of the Tier II codes or not represented by a Tier I code

Revised Codes – Molecular Pathology

Description Revisions to Tier II Molecular Pathology Procedures

- 81401 – CCND1/IGH and NTRK3 translocation analysis removed
- 81402 – IGH@/BCL2 translocation analysis and MPL (common variants) removed
- 81403 – JAK2 exon 12/13 sequence and MPL exon 10 sequence removed
- 81404 – TP53 targeted sequence analysis of 2-5 exons removed
- 81405 – TP53 full gene sequence or targeted sequence analysis of more than 5 exons removed

Added Codes – MAAA

- 81419 - Epilepsy genomic sequence analysis panel, must include analyses for ALDH7A1, CACNA1A, CDKL5, CHD2, GABRG2, GRIN2A, KCNQ2, MECP2, PCDH19, POLG, PRRT2, SCN1A, SCN1B, SCN2A, SCN8A, SLC2A1, SLC9A6, STXBP1, SYNGAP1, TCF4, TPP1, TSC1, TSC2, and ZEB2
- 81513 - Infectious disease, bacterial vaginosis, quantitative real-time amplification of RNA markers for *Atopobium vaginae*, *Gardnerella vaginalis*, and *Lactobacillus* species, utilizing vaginal-fluid specimens, algorithm reported as a positive or negative result for bacterial vaginosis
- 81514 - Infectious disease, bacterial vaginosis and vaginitis, quantitative real-time amplification of DNA markers for *Gardnerella vaginalis*, *Atopobium vaginae*, *Megasphaera* type 1, Bacterial Vaginosis Associated Bacteria-2 (BVAB-2), and *Lactobacillus* species (*L. crispatus* and *L. jensenii*), utilizing vaginal-fluid specimens, algorithm reported as a positive or negative for high likelihood of bacterial vaginosis, includes separate detection of *Trichomonas vaginalis* and/or *Candida* species (*C. albicans*, *C. tropicalis*, *C. parapsilosis*, *C. dubliniensis*), *Candida glabrata*, *Candida krusei*, when reported

Added Codes – MAAA

- 81529 - Oncology (cutaneous melanoma), mRNA, gene expression profiling by real-time RT-PCR of 31 genes (28 content and 3 housekeeping), utilizing formalin-fixed paraffin-embedded tissue, algorithm reported as recurrence risk, including likelihood of sentinel lymph node metastasis
- 81546 - Oncology (thyroid), mRNA, gene expression analysis of 10,196 genes, utilizing fine needle aspirate, algorithm reported as a categorical result (eg, benign or suspicious)
- 81554 - Pulmonary disease (idiopathic pulmonary fibrosis [IPF]), mRNA, gene expression analysis of 190 genes, utilizing transbronchial biopsies, diagnostic algorithm reported as categorical result (eg, positive or negative for high probability of usual interstitial pneumonia [UIP])

Deleted Code – MAAA

Deleted Code	Suggested Replacement Codes
81545 – Oncology (thyroid), gene expression analysis of 142 genes, utilizing fine needle aspirate, algorithm reported as a categorical result (eg, benign or suspicious)	There is no direct replacement for this code; test is no longer available

Added Codes - Chemistry

- 82077 - Alcohol (ethanol); any specimen except urine and breath, immunoassay (eg, IA, EIA, ELISA, RIA, EMIT, FPIA) and enzymatic methods (eg, alcohol dehydrogenase)
 - Use 80320 for definitive drug testing for alcohol
 - Use 82077 for alcohol by immunoassay or enzymatic methods
- 82681 - Estradiol; free, direct measurement (eg, equilibrium dialysis)
 - New child code of 82670 (Estradiol, total)

Revised Codes - Chemistry

CPT Code	2021 Long Description	2020 Long Description
80415	Chorionic gonadotropin stimulation panel; estradiol response This panel must include the following: Estradiol total (82670 x 2 on 3 pooled blood samples)	Chorionic gonadotropin stimulation panel; estradiol response This panel must include the following: Estradiol (82670 x 2 on 3 pooled blood samples)
82075	Alcohol (ethanol); breath	Alcohol (ethanol); breath
82670	Estradiol; total	Estradiol

- “Total” is being added to 82670 and therefore to 80415 to accommodate new code for free estradiol testing
- 82075 has become a parent code to accommodate new code 82077

Added Codes – PLA

13 New Proprietary Laboratory Analysis Codes

- 0227U - Drug assay, presumptive, 30 or more drugs or metabolites, urine, liquid chromatography with tandem mass spectrometry (LC-MS/MS) using multiple reaction monitoring (MRM), with drug or metabolite description, includes sample validation
- 0228U - Oncology (prostate), multianalyte molecular profile by photometric detection of macromolecules adsorbed on nanosponge array slides with machine learning, utilizing first morning voided urine, algorithm reported as likelihood of prostate cancer
- 0229U - BCAT1 (Branched chain amino acid transaminase 1) or IKZF1 (IKAROS family zinc finger 1) (eg, colorectal cancer) promoter methylation analysis

Added Codes – PLA

13 New Proprietary Laboratory Analysis Codes

- 0230U - AR (androgen receptor) (eg, spinal and bulbar muscular atrophy, Kennedy disease, X chromosome inactivation), full sequence analysis, including small sequence changes in exonic and intronic regions, deletions, duplications, short tandem repeat (STR) expansions, mobile element insertions, and variants in non-uniquely mappable regions
- 0231U - CACNA1A (calcium voltage-gated channel subunit alpha 1A) (eg, spinocerebellar ataxia), full gene analysis, including small sequence changes in exonic and intronic regions, deletions, duplications, short tandem repeat (STR) gene expansions, mobile element insertions, and variants in non-uniquely mappable regions
- 0232U - CSTB (cystatin B) (eg, progressive myoclonic epilepsy type 1A, Unverricht-Lundborg disease), full gene analysis, including small sequence changes in exonic and intronic regions, deletions, duplications, short tandem repeat (STR) expansions, mobile element insertions, and variants in non-uniquely mappable regions

Added Codes – PLA Codes

13 New Proprietary Laboratory Analysis Codes

- 0233U - FXN (frataxin) (eg, Friedreich ataxia), gene analysis, including small sequence changes in exonic and intronic regions, deletions, duplications, short tandem repeat (STR) expansions, mobile element insertions, and variants in non-uniquely mappable regions
- 0234U - MECP2 (methyl CpG binding protein 2) (eg, Rett syndrome), full gene analysis, including small sequence changes in exonic and intronic regions, deletions, duplications, mobile element insertions, and variants in non-uniquely mappable regions
- 0235U - PTEN (phosphatase and tensin homolog) (eg, Cowden syndrome, PTEN hamartoma tumor syndrome), full gene analysis, including small sequence changes in exonic and intronic regions, deletions, duplications, mobile element insertions, and variants in non-uniquely mappable regions

Added Codes – PLA Codes

13 New Proprietary Laboratory Analysis Codes

- 0236U - SMN1 (survival of motor neuron 1, telomeric) and SMN2 (survival of motor neuron 2, centromeric) (eg, spinal muscular atrophy) full gene analysis, including small sequence changes in exonic and intronic regions, duplications and deletions, and mobile element insertions
- 0237U - Cardiac ion channelopathies (eg, Brugada syndrome, long QT syndrome, short QT syndrome, catecholaminergic polymorphic ventricular tachycardia), genomic sequence analysis panel including ANK2, CASQ2, CAV3, KCNE1, KCNE2, KCNH2, KCNJ2, KCNQ1, RYR2, and SCN5A, including small sequence changes in exonic and intronic regions, deletions, duplications, mobile element insertions, and variants in non-uniquely mappable regions

Added Codes – PLA Codes

13 New Proprietary Laboratory Analysis Codes

- 0238U - Oncology (Lynch syndrome), genomic DNA sequence analysis of MLH1, MSH2, MSH6, PMS2, and EPCAM, including small sequence changes in exonic and intronic regions, deletions, duplications, mobile element insertions, and variants in non-uniquely mappable regions
- 0239U - Targeted genomic sequence analysis panel, solid organ neoplasm, cell-free DNA, analysis of 311 or more genes, interrogation for sequence variants, including substitutions, insertions, deletions, select rearrangements, and copy number variations

Changes to Medicine Section



Added Code – Immune Globulin

Immune Globulin, Serum or Recombinant Products

- 90377 - Rabies immune globulin, heat- and solvent/detergent-treated (Rlg-HT S/D), human, for intramuscular and/or subcutaneous use

Added Code – Ophthalmology



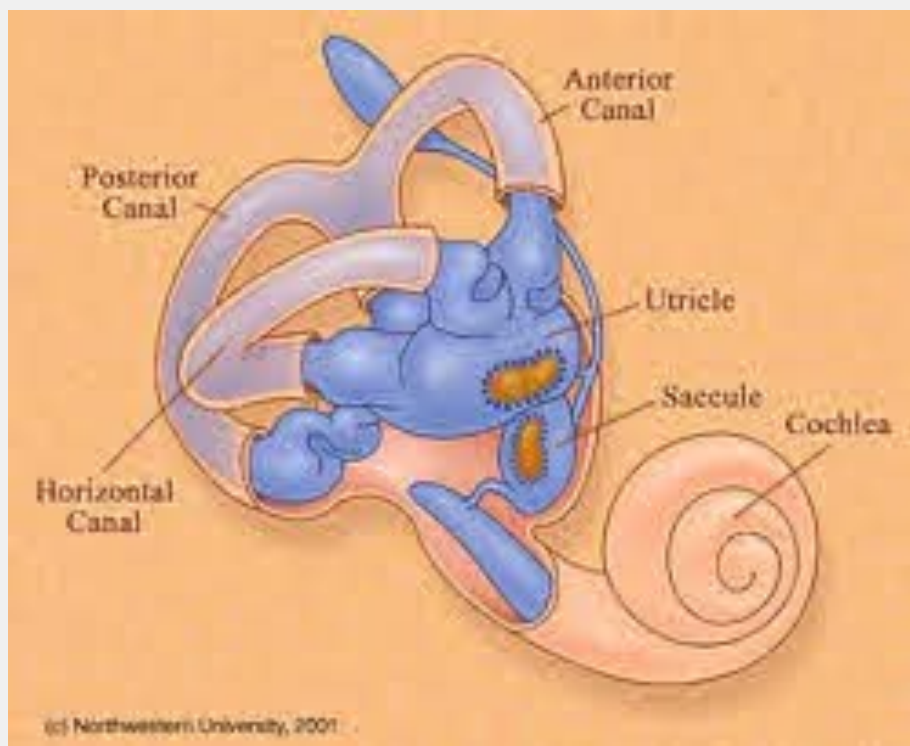
- **92229 - Imaging of retina for detection or monitoring of disease; point-of-care automated analysis and report, unilateral or bilateral**
- Approved for diabetic retinopathy to differentiate background from severe retinopathy
- Other retinal conditions may be added in the future

Revised Codes - Ophthalmology

CPT Code	2021 Long Description	2020 Long Description
92227	Imaging <u>of retina</u> for detection <u>or monitoring</u> of disease; <u>with remote clinical staff review and report</u> , unilateral or bilateral	Remote imaging for detection of retinal disease (eg, retinopathy in a patient with diabetes) with analysis and report under physician supervision , unilateral or bilateral
92228	Imaging <u>of retina</u> for detection <u>or monitoring</u> of disease; with <u>remote physician or other qualified health care professional</u> interpretation and report, unilateral or bilateral	Remote imaging for monitoring and management of active retinal disease (eg, diabetic retinopathy) with physician review, interpretation and report, unilateral or bilateral

- 92227 is for use when clinic staff review the results and provide the report
- 92228 is for use when physician reviews the results and provides the report

Added Codes - Otorhinolaryngology



VEMP Testing

- New tests of the vestibular family that allow for testing of the otolithic organs - utricle and saccule - of the inner ear
- Complements information obtained from caloric testing or other vestibular apparatus testing

Added Codes - Otorhinolaryngology

VEMP Testing

- 92517 - Vestibular evoked myogenic potential (VEMP) testing, with interpretation and report; cervical (cVEMP)
 - Evaluates the saccule and inferior branch of the vestibular nerve
- 92518 - Vestibular evoked myogenic potential (VEMP) testing, with interpretation and report; ocular (oVEMP)
 - Evaluates the utricle and superior vestibular nerve
- 92519 - Vestibular evoked myogenic potential (VEMP) testing, with interpretation and report; cervical (cVEMP) and ocular (oVEMP)

Added Codes - Otorhinolaryngology

Auditory Evoked Potentials



- Involuntary recordings (EEG) to stimuli which are recorded with patient in a relaxed or sleeping state
- Test of choice for infants or patients who can't indicate an auditory response

Added Codes - Otorhinolaryngology

Auditory Evoked Potentials

- 92650 - Auditory evoked potentials; screening of auditory potential with broadband stimuli, automated analysis
- 92651 - Auditory evoked potentials; for hearing status determination, broadband stimuli, with interpretation and report
- 92652 - Auditory evoked potentials; for threshold estimation at multiple frequencies, with interpretation and report
- 92653 - Auditory evoked potentials; neurodiagnostic, with interpretation and report

Two nonspecific codes are being replaced with four codes that delineate between clinical indications – Screening, hearing status determination, threshold estimation, and neurodiagnostic

Deleted Codes - Otorhinolaryngology

Deleted Code	Suggested Replacement Codes
92585 – Auditory evoked potentials for evoked response audiometry and/or testing of the central nervous system; comprehensive	92652 – Threshold estimation 92653 - Neurodiagnostic
92586 - Auditory evoked potentials for evoked response audiometry and/or testing of the central nervous system; limited	92650 - Screening 92651 – Hearing status determination

Added Codes – Cardiovascular

Extended ECG Monitoring More Than 48 Hours, Up To 7 Days

- 93241 - External electrocardiographic recording for more than 48 hours up to 7 days by continuous rhythm recording and storage; includes recording, scanning analysis with report, review and interpretation
- 93242 - External electrocardiographic recording for more than 48 hours up to 7 days by continuous rhythm recording and storage; recording (includes connection and initial recording)
- 93243 - External electrocardiographic recording for more than 48 hours up to 7 days by continuous rhythm recording and storage; scanning analysis with report
- 93244 - External electrocardiographic recording for more than 48 hours up to 7 days by continuous rhythm recording and storage; review and interpretation

Added Codes – Cardiovascular

Extended ECG Monitoring More Than 7 Days, Up to 15 Days

- 93245 - External electrocardiographic recording for more than 7 days up to 15 days by continuous rhythm recording and storage; includes recording, scanning analysis with report, review and interpretation
- 93246 - External electrocardiographic recording for more than 7 days up to 15 days by continuous rhythm recording and storage; recording (includes connection and initial recording)
- 93247 - External electrocardiographic recording for more than 7 days up to 15 days by continuous rhythm recording and storage; scanning analysis with report
- 93248 - External electrocardiographic recording for more than 7 days up to 15 days by continuous rhythm recording and storage; review and interpretation

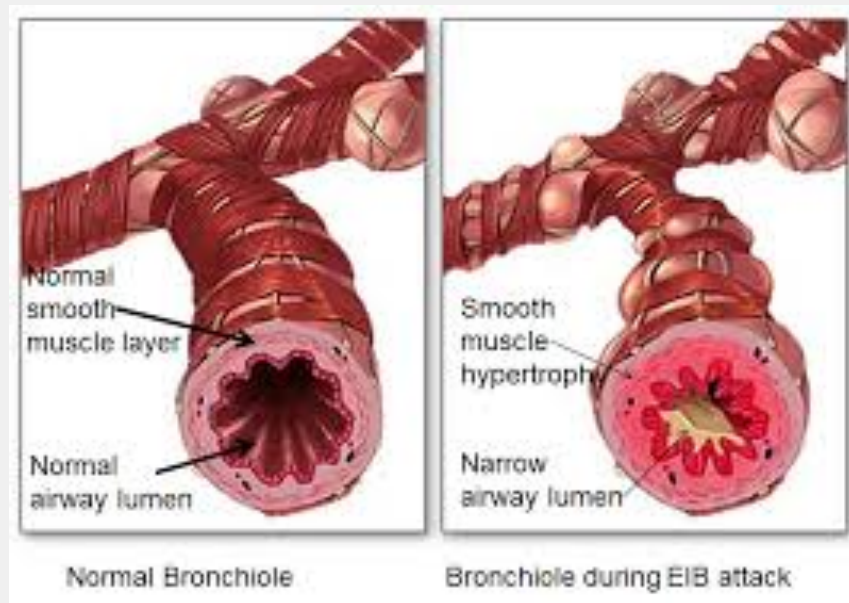
New Guidelines - Cardiovascular

Cardiovascular Monitoring Services

- 93224-93227 describe Holter monitors (up to 48 hours)
- 93228 & 93229 describe mobile cardiac telemetry monitors which transmit to an attended surveillance center (up to 30 days)
- 93268-93272 describe event monitors that record when triggered with transmission to attended surveillance center on request (up to 30 days)
- 93241-93248 describe long-term continuous recorders which record continuously (Do not require attended surveillance center)

Added Code - Pulmonary

- **Exercise Test for Bronchospasm**



- 94619 - Exercise test for bronchospasm, including pre- and post-spirometry and pulse oximetry; without electrocardiographic recording(s)

Revised Code - Pulmonary

CPT Code	2021 Long Description	2020 Long Description
94617	Exercise test for bronchospasm, including pre- and post-spirometry, and pulse oximetry; <u>with electrocardiographic recording(s)</u>	Exercise test for bronchospasm, including pre- and post-spirometry, electrocardiographic recording(s) , and pulse oximetry

Codes are now differentiated based upon whether or not electrocardiographic recordings are obtained during exercise test

Deleted Codes - Pulmonary

Deleted Code	Suggested Replacement Codes
94250 – Expired gas collection, quantitative, single procedure (separate procedure)	There is no direct replacement for this code; see codes 94680, 94681, 94690, 94799, 95012
94400 – Breathing response to CO2 (CO2 response curve)	There is no direct replacement for this code; see 94681 or 94799
94750 – Pulmonary compliance study (eg, plethysmography, volume and pressure measurements)	Multiple CPT codes may be required depending upon specific procedures performed.
94770 – Carbon dioxide, expired gas determination by infrared analyzer	There is no direct replacement for this code; see 94681 or 94799
95071 – Inhalation bronchial challenge testing (not including necessary pulmonary function tests); with antigens or gases, specify	There is no direct replacement for this code; see 95070 or 95199

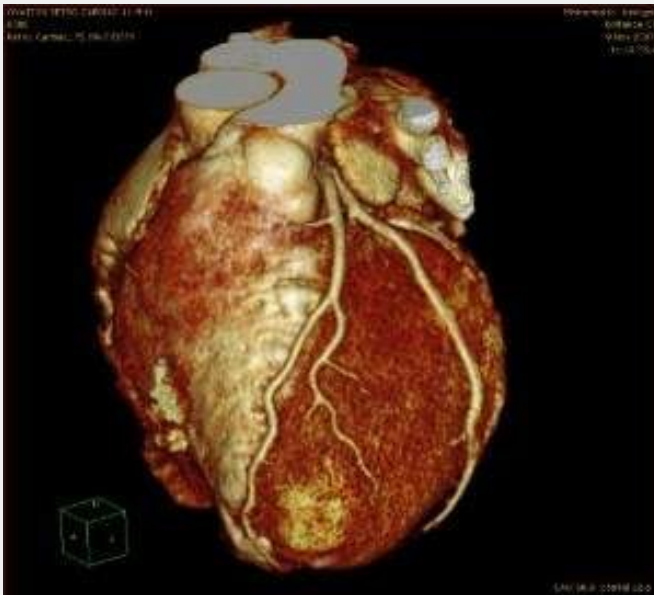
Changes to Category III Codes



"My doctor told me to avoid any unnecessary stress, so I didn't open his bill."

Added Codes – Category III

- **0623T - 0626T – Automated quantification and characterization of coronary plaque using CCTA data**
 - Uses computerized algorithms to assess the extent and severity of coronary artery disease
 - Findings are provided to physician to perform final review and report
 - Report only once per CCTA
 - Do NOT report 76376 or 76377 with these codes, as they include 3D imaging



Added Codes – Category III

Code	Long Description
0623T	Automated quantification and characterization of coronary atherosclerotic plaque to assess severity of coronary disease, using data from coronary computed tomographic angiography; data preparation and transmission, computerized analysis of data, with review of computerized analysis output to reconcile discordant data, interpretation and report
0624T	Automated quantification and characterization of coronary atherosclerotic plaque to assess severity of coronary disease, using data from coronary computed tomographic angiography; data preparation and transmission
0625T	Automated quantification and characterization of coronary atherosclerotic plaque to assess severity of coronary disease, using data from coronary computed tomographic angiography; computerized analysis of data from coronary computed tomographic angiography
0626T	Automated quantification and characterization of coronary atherosclerotic plaque to assess severity of coronary disease, using data from coronary computed tomographic angiography; review of computerized analysis output to reconcile discordant data, interpretation and report

New Guidelines – Category III

Automated Quantification and Characterization of Coronary Plaque Using CCTA

- Use 0623T, 0624T, 0625T, or 0626T one time per coronary CTA
- Do not report 0623T, 0624T, 0625T, or 0626T in conjunction with 76376 and 76377
- For noninvasive estimated coronary fractional flow reserve derived from coronary CTA, use 0501T-0504T

Added Codes – Category III

- **0633T - 0638T – Cone-beam CT of the breast(s)**



- Provides better spatial and contrast resolution
- Allows better visualization through dense breast tissue
- Can be performed with IV contrast
- Do NOT report 76376 or 76377 with these codes, as they include 3D imaging

Added Codes – Category III

Code	Long Description
0633T	Computed tomography, breast, including 3D rendering, when performed, unilateral; without contrast material
0634T	Computed tomography, breast, including 3D rendering, when performed, unilateral; with contrast material(s)
0635T	Computed tomography, breast, including 3D rendering, when performed, unilateral; without contrast, followed by contrast material(s)
0636T	Computed tomography, breast, including 3D rendering, when performed, bilateral; without contrast material(s)
0637T	Computed tomography, breast, including 3D rendering, when performed, bilateral; with contrast material(s)
0638T	Computed tomography, breast, including 3D rendering, when performed, bilateral; without contrast, followed by contrast material(s)

Added Codes – Category III

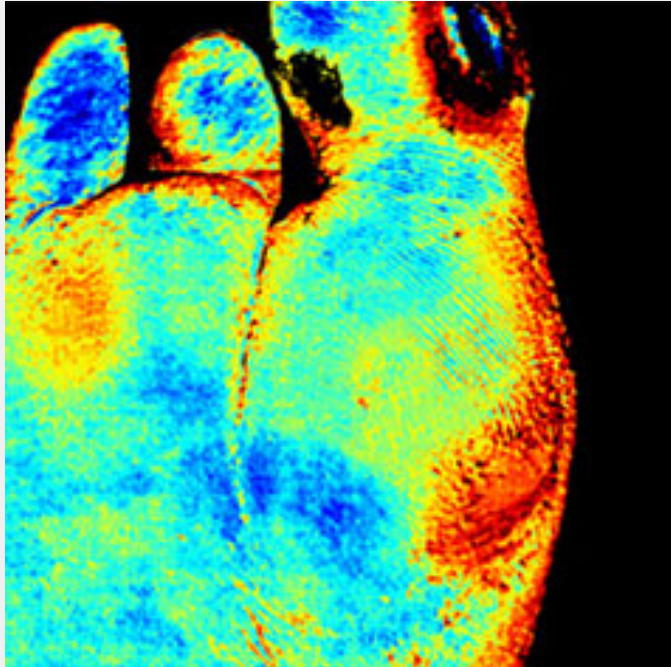


Image courtesy of HyperMed™

- **0631T – Transcutaneous visible light hyperspectral imaging measurement of oxyhemoglobin, deoxyhemoglobin, and tissue oxygenation, with interpretation and report, per extremity**
 - Provides color-coded images to identify areas of ischemic tissue using multiple wavelengths of spectral light
 - Useful for patients with diabetic foot ulcers or peripheral vascular disease

Added Codes – Category III



Image courtesy of Northwestern University

- **0639T – Wireless skin sensor thermal anisotropy measurement(s) and assessment of flow in cerebrospinal fluid shunt, including ultrasound guidance, when performed**
- Captures flow data and transmits the data via wireless technology to physician to determine patency of CSF shunt

Deleted Codes – Category III

Deleted Code	Suggested Replacement Codes
0058T – Cryopreservation; reproductive tissue, ovarian	89398 – Unlisted reproductive medicine laboratory procedure
0085T – Breath test for heart transplant rejection	84999 – Unlisted chemistry procedure
0111T – Long-chain (C20-22) omega-3 fatty acids in red blood cell (RBC) membranes	84999 – Unlisted chemistry procedure
0126T – Common carotid intima-media thickness (IMT) study for evaluation of atherosclerotic burden or coronary heart disease risk factor assessment	93998 – Unlisted noninvasive vascular diagnostic study

Deleted Codes – Category III

Deleted Code	Suggested Replacement Codes
0295T – External electrocardiographic recording for more than 48 hours up to 21 days by continuous rhythm recording and storage; includes recording, scanning analysis with report, review and interpretation	93241 or 93245
0296T – External electrocardiographic recording for more than 48 hours up to 21 days by continuous rhythm recording and storage; recording (includes connection and initial recording)	93242 or 93246
0297T – External electrocardiographic recording for more than 48 hours up to 21 days by continuous rhythm recording and storage; scanning analysis with report	93243 or 93247
0298T – External electrocardiographic recording for more than 48 hours up to 21 days by continuous rhythm recording and storage; review and interpretation	93244 or 93248

Deleted Codes – Category III

Deleted Code	Suggested Replacement Codes
0381T – External heart rate and 3-axis accelerometer data recording up to 14 days to assess changes in heart rate and to monitor motion analysis for the purposes of diagnosing nocturnal epilepsy seizure events; includes report, scanning analysis with report, review and interpretation by a physician or other qualified health care professional	95999 – Unlisted neurological or neuromuscular diagnostic procedure
0382T – External heart rate and 3-axis accelerometer data recording up to 14 days to assess changes in heart rate and to monitor motion analysis for the purposes of diagnosing nocturnal epilepsy seizure events; review and interpretation only	95999 – Unlisted neurological or neuromuscular diagnostic procedure
0383T – External heart rate and 3-axis accelerometer data recording from 15 to 30 days to assess changes in heart rate and to monitor motion analysis for the purposes of diagnosing nocturnal epilepsy seizure events; includes report, scanning analysis with report, review and interpretation by a physician or other qualified health care professional	95999 – Unlisted neurological or neuromuscular diagnostic procedure

Deleted Codes – Category III

Deleted Code	Suggested Replacement Codes
0384T – External heart rate and 3-axis accelerometer data recording from 15 to 30 days to assess changes in heart rate and to monitor motion analysis for the purposes of diagnosing nocturnal epilepsy seizure events; review and interpretation only	95999 – Unlisted neurological or neuromuscular diagnostic procedure
0385T – External heart rate and 3-axis accelerometer data recording more than 30 days to assess changes in heart rate and to monitor motion analysis for the purposes of diagnosing nocturnal epilepsy seizure events; includes report, scanning analysis with report, review and interpretation by a physician or other qualified health care professional	95999 – Unlisted neurological or neuromuscular diagnostic procedure
0386T – External heart rate and 3-axis accelerometer data recording more than 30 days to assess changes in heart rate and to monitor motion analysis for the purposes of diagnosing nocturnal epilepsy seizure events; review and interpretation only	95999 – Unlisted neurological or neuromuscular diagnostic procedure

Deleted Codes – Category III

Deleted Code	Suggested Replacement Codes
0400T – Multi-spectral digital skin lesion analysis of clinically atypical cutaneous pigmented lesions for detection of melanomas and high risk melanocytic atypia; one to five lesions	96999 – Unlisted special dermatological service or procedure
0401T – Multi-spectral digital skin lesion analysis of clinically atypical cutaneous pigmented lesions for detection of melanomas and high risk melanocytic atypia; six or more lesions	96999 – Unlisted special dermatological service or procedure
0405T – Oversight of the care of an extracorporeal liver assist system patient requiring review of status, review of laboratories and other studies, and revision of orders and liver assist care plan (as appropriate), within a calendar month, 30 minutes or more of non-face-to-face time	99499 - Unlisted evaluation and management service

New Guidelines – Category III

Implantable Substernal Cardioverter-Defibrillator

- Device consists of a generator with at least one substernal electrode. Generator is placed in a pocket over the lateral rib cage. Electrode is tunneled under the skin and placed into the substernal anterior mediastinum without entering the pericardial cavity; it does not perform chronic pacing. Used for defibrillation and anti-tachycardia pacing.



Questions?



Thank you!