

Definitions

Intake: Animals admitted to the Animal Center. These include animals surrendered by the general public, picked up by Animal Control and animals born at the Center.

Adoption: Includes animals adopted to new homes and transferred to qualifying rescue groups.

Reclaim: Animals reclaimed by their owners after being found as strays or after completing quarantine period.

Euthanasia: Animals humanely euthanized at the Center. This includes animals that reside at the Animal Center and animals surrendered by their owner for euthanasia for medical or behavioral reasons.

NOTE: The data included in the graphs below represent all types of animals except for the data table on page 7. That table only includes dogs and cats, which represent the vast majority of the animals we deal with.

Animal Center News

April is a big month for the section because we hold our annual Spring Rabies/Microchip clinics. Here are our results:

Date	Location	Rabies	Microchips	Total
4/10/2010	DMV Headquarters	335	111	446
4/13/2010	Apex Community Park	157	24	181
4/15/2010	Southern Regional Center	208	60	268
4/17/2010	Bark around the Park, Millbrook Exchange Park	237	139	376
4/20/2010	Harper Park - Knightdale	195	63	258
4/22/2010	Eastern Regional Center	201	32	233
4/24/2010	SPCA of Wake County Adoption Center	244	88	332
4/27/2010	Morrisville Community Park	195	58	253
4/29/2010	Northern Regional Center	189	45	234
TOTAL		1961	620	2581

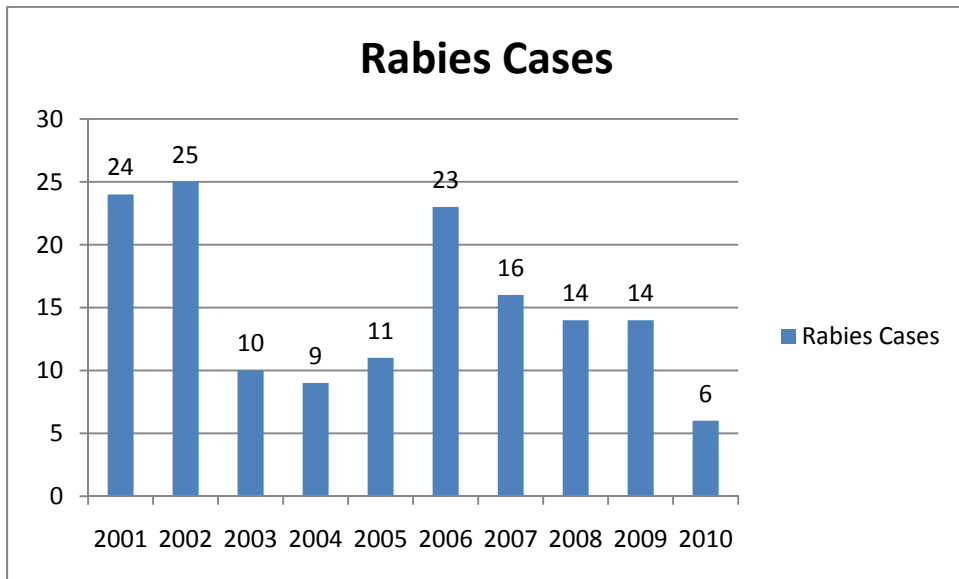
Big thanks go out to Kristine Berry and the volunteers of the Wake County Animal Center for coming together to staff these events, especially the "MEGA" clinics held on the Saturdays. Also, at the DMV clinic, we handed out over 2000 lbs of food to participants after a very successful food drive. Big thanks to the Pet Pantry for helping

by matching donations to total more than 1600 lbs of food and June Fail for organizing local donation centers.

Expansion Construction Update

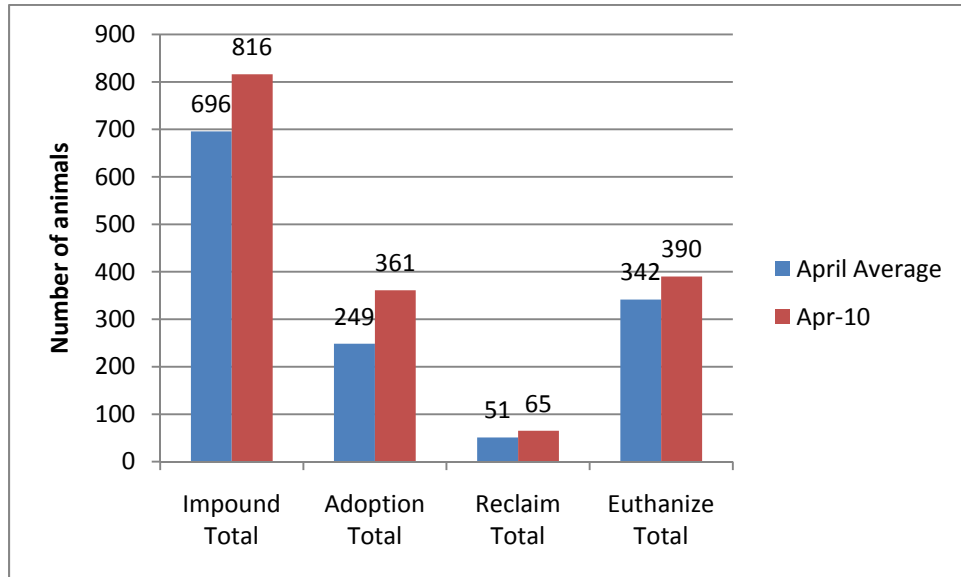
We made big strides in the construction zone this month. All HVAC and air handlers have been replaced and we have lots of fresh air moving through the dog rooms. The kennels have been installed as well as the cat condos and the flooring has been completed. The space is open and inviting and we are very excited to move in as early as May!

Rabies: Positive confirmed laboratory cases

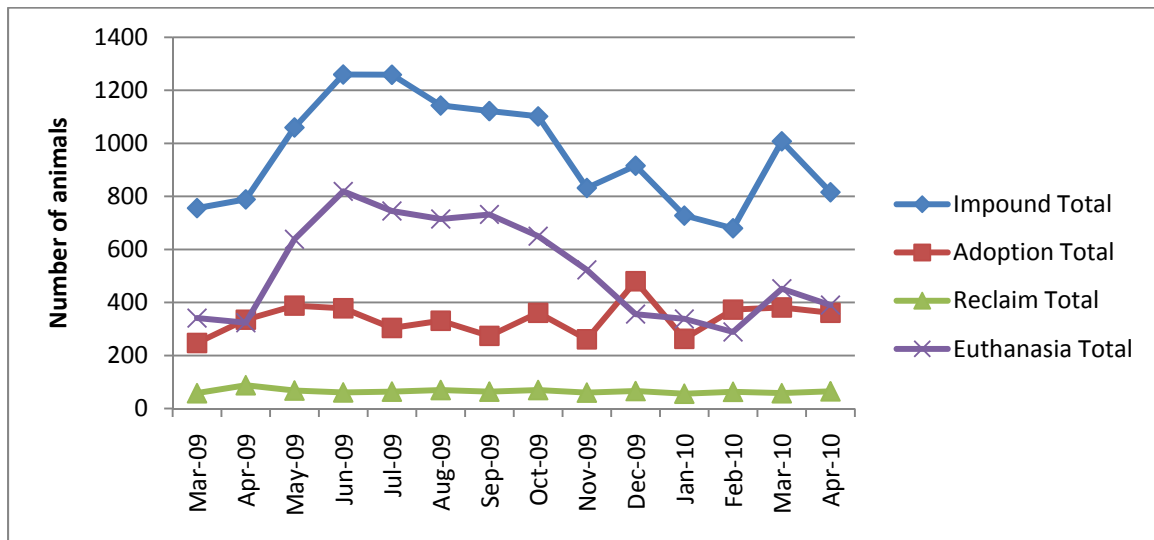


n=1 April 2010; year to date cases=6; Wake County averages 15.8 laboratory confirmed cases each year; since 2001, raccoon tests account for 56% of all species that test positive in Wake County; rabies is enzootic (present in wildlife) in all NC counties

Animal Center Statistical Summary

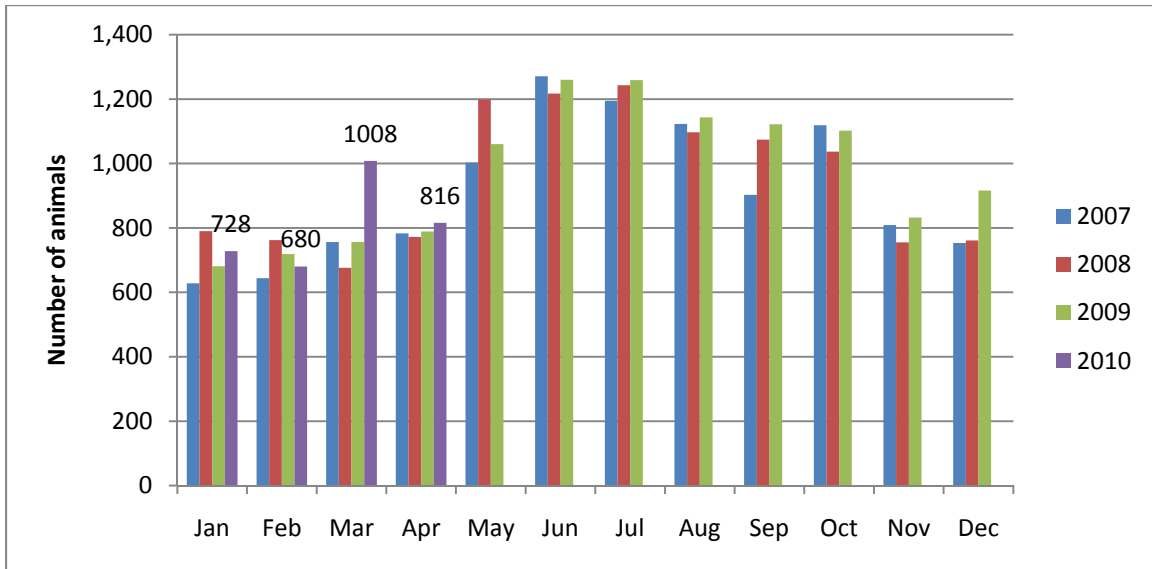


April 2010: Intake is 17% higher than the average, Adoptions are 45% higher, Reclaims are 27% higher and euthanasia is 14% higher than the average. *Note: Averages include data from FY02 until the current month*



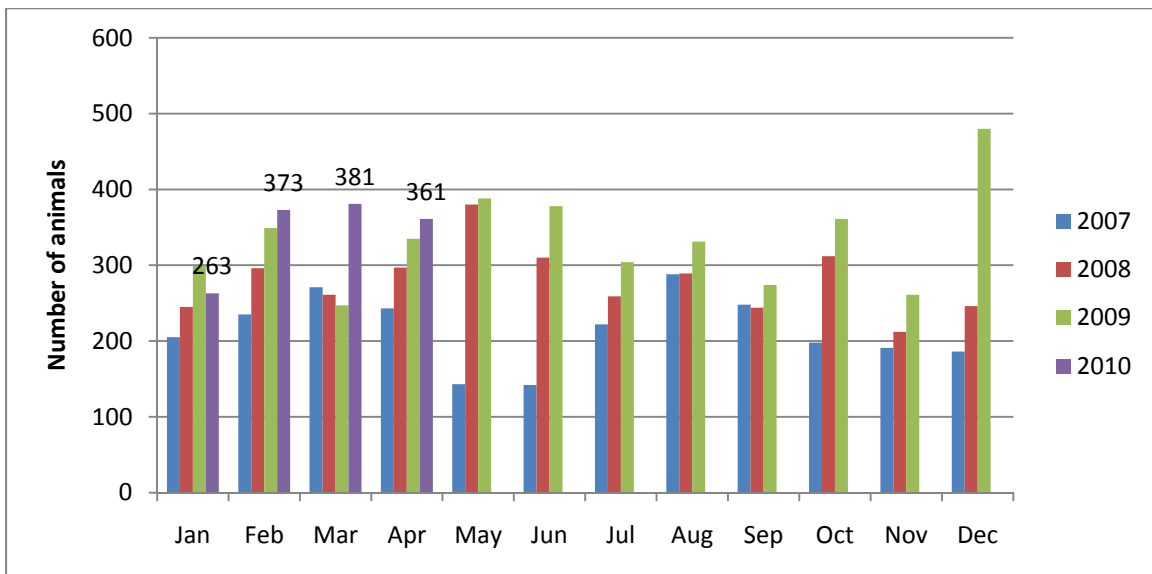
Ebb and Flow of animal intake: As depicted above, animal intake increases significantly in the warm months and drops in the cold months. This is typically associated with an increase in puppy and kitten litters in warm months. Adoptions do not normally increase to match the increase in intake so euthanasia rates can increase with intake.

Animal Center Intake monthly comparison



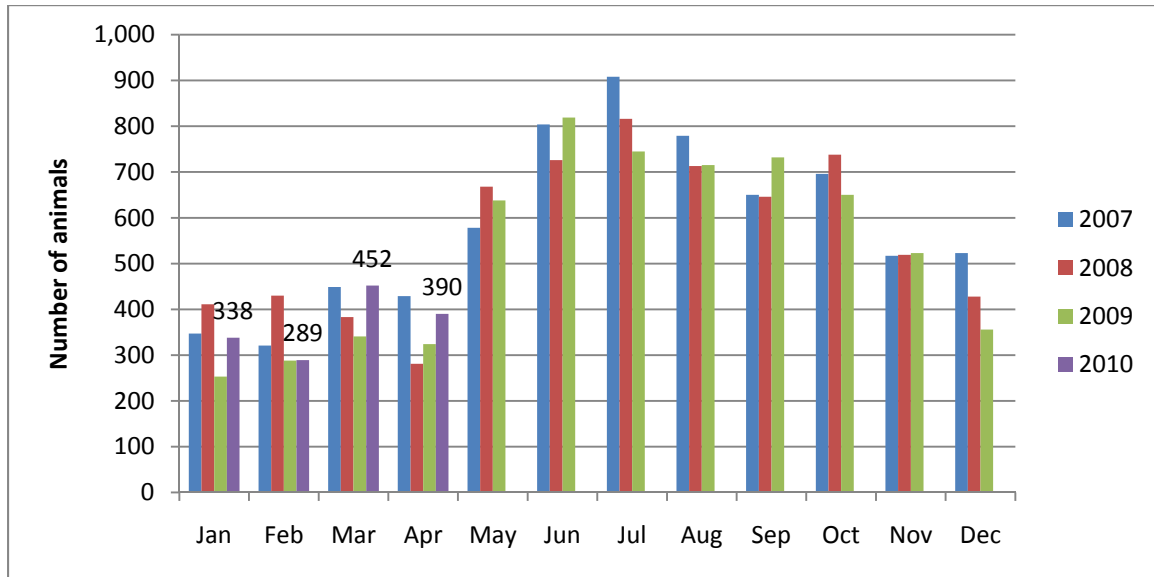
n=816; Intake is 3% higher than April 2009.

Adoption Monthly Comparison



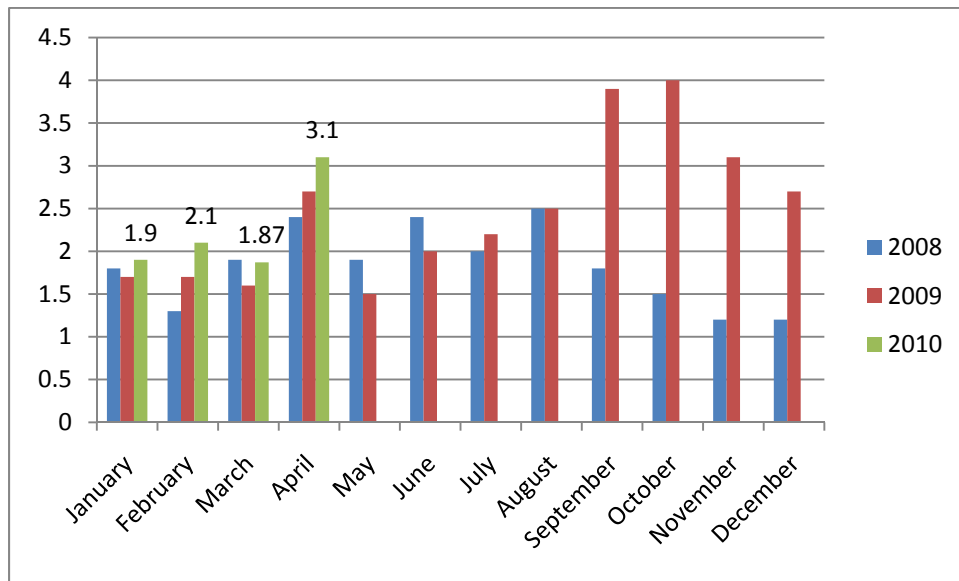
n=361; data represents a combination of typical adoptions to new families and transfers to partner rescue groups; 8% increase in adoptions over April 2009.

Euthanasia monthly comparison



n=390; the euthanasia numbers are less than 20% higher than this month last year.

Volunteer hours by FTE



n=3.1 FTEs; Volunteers logged enough hours this month to equal 3.1 extra full time employees. This includes dog walking, socialization, off-site events and work promoting animals in the community, just to name a few.

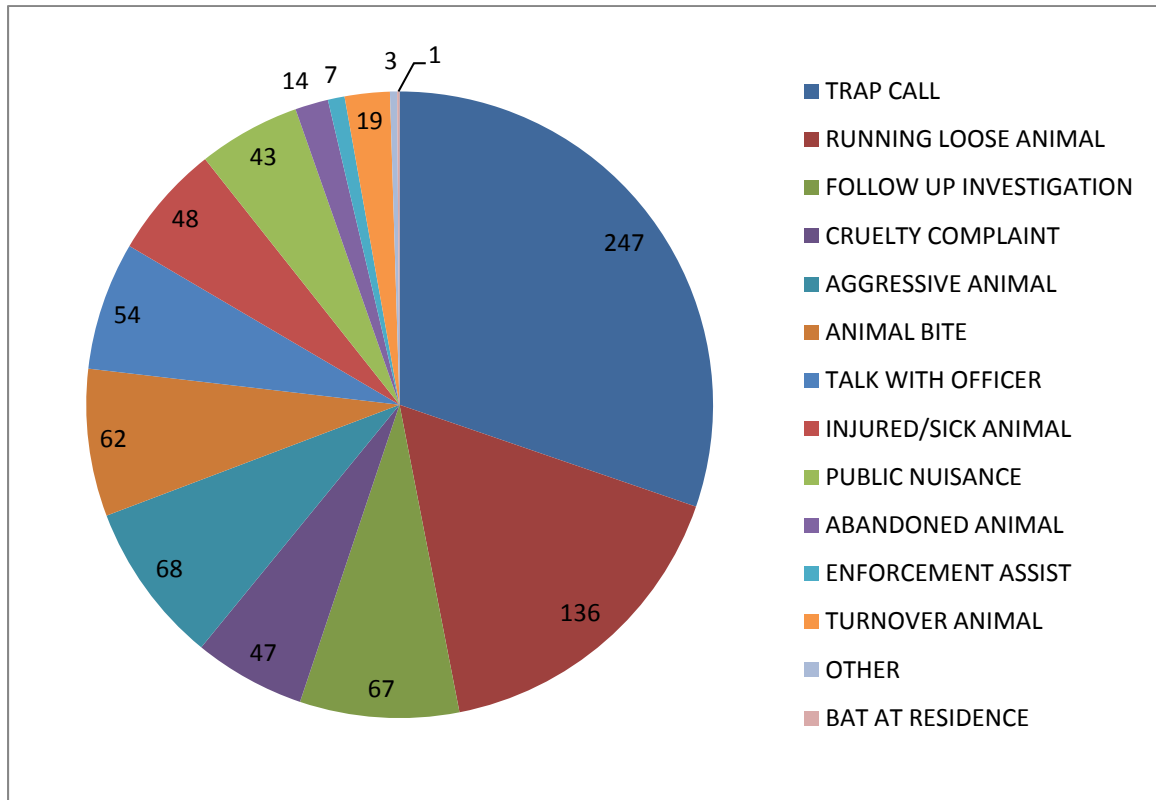
Animal Shelter Statistics for period **April 1-30, 2010**

Year to year comparison is over the same timeframe each year.	2007-2008		2008-2009		2009-2010 (YTD)							
	Count	Perf.	Count	Perf.	1st Q	2nd Q	Jan-10	Feb-10	Mar-10	Apr-10	YTD	Performance
Impound Dog	4,125		4,360		1492	1392	397	403	487	384	4555	
Impound Cat	4,467		4,222		1944	1397	312	266	481	415	4815	
Impound Total	8,592		8,582		3436	2789	709	669	968	799	9370	
Garner Animal Control Intake					96	90	22	30	21	32	291	
Cary Animal Control Intake					54	59	22	8	16	22	181	
Adoption Dog	1,641	39.8%	1,913	43.9%	651	711	182	246	249	214	2253	49.5%
Adoption Cat	623	13.9%	681	16.1%	217	348	76	107	113	129	990	20.6%
Adoption Total	2,264	26.4%	2,594	30.2%	868	1059	258	353	362	343	3243	34.6%
Reclaim Dog	494	12.0%	567	13.0%	171	179	42	56	52	57	557	12.2%
Reclaim Cat	61	1.4%	69	1.6%	27	15	14	7	3	8	74	1.5%
Reclaim Total	555	6.5%	636	7.4%	198	194	56	63	55	65	631	6.7%
Euthanize Dog	1,976	47.9%	1,642	37.7%	569	478	107	106	134	136	1530	33.6%
Euthanize Cat	3,698	82.8%	3,328	78.8%	1605	1044	227	177	314	246	3613	75.0%
Euthanize Total	5,674	66.0%	4,970	57.9%	2174	1522	334	283	448	382	5143	54.9%

FOSTER-TO-ADOPT PROGRAM	FY 09	1st Q	2nd Q	Jan-10	Feb-10	Mar-10	Apr-10	FY10
Animals Placed into Program	188	155	182	32	56	63	61	737
Adoptions Completed		104	100	44	34	64	74	420
Animals Returned		6	6	4	5	4	1	26
Animals Remaining in FTA								291

***The large chart above represents both a listing of monthly performance and a comparison to the last two years. The same amount of months is compared for each year. For example, it shows that in FY08 at this time of the year, we had adopted out 24.1% of animals, in FY09 28.8% and this fiscal year 33.4% have been adopted.**

Animal Control Field Data



Wake County Animal Control responded to 816 requests for service in April 2010.

Rescue Report

In total, 93 animals were transferred to local shelters and rescues. That is tremendous and we can't thank our rescue partners enough. Please remember to support our local rescues and peer shelters because the more you adopt from them, the more they can take from us!

Shelter/Rescues	Cats Transferred
SPCA of Wake County	25
Marley's Cat Tales	9
Safe Haven For Cats	6
Paw Prints Animal Rescue	5
All Breed Animal Rescue of the Carolinas	2
Hav-A-Hart Pet Rescue	2

Shelter/Rescues	Dogs Transferred
Hav-A-Hart Pet Rescue	6
Falkner Animal Rescue and Recovery	3
2 Paws Up	3
Paw Prints Animal Rescue	2
A New Leash On Life	2
Camp Canines	2
Doberman Rescue of NC	2

Foster Program:

There were sixty seven (67) animals placed into foster care during the month of April. All animals placed were for a medical condition or were part of a newborn litter.