

Wake County

Animal Care, Control and Adoption

July 2010 Monthly Report



Wake County
8/17/2010

Definitions

Intake: Animals admitted to the Animal Center. These include animals surrendered by the general public, picked up by Animal Control and animals born at the Center.

Adoption: Includes animals adopted to new homes and transferred to qualifying rescue groups.

Reclaim: Animals reclaimed by their owners after being found as strays or after completing quarantine period.

Euthanasia: Animals humanely euthanized at the Center. This includes animals that reside at the Animal Center and animals surrendered by their owner for euthanasia for medical or behavioral reasons.

NOTE: The data included in the graphs below represent all types of animals except for the data table on page 7. That table only includes dogs and cats, which represent the vast majority of the animals we deal with.

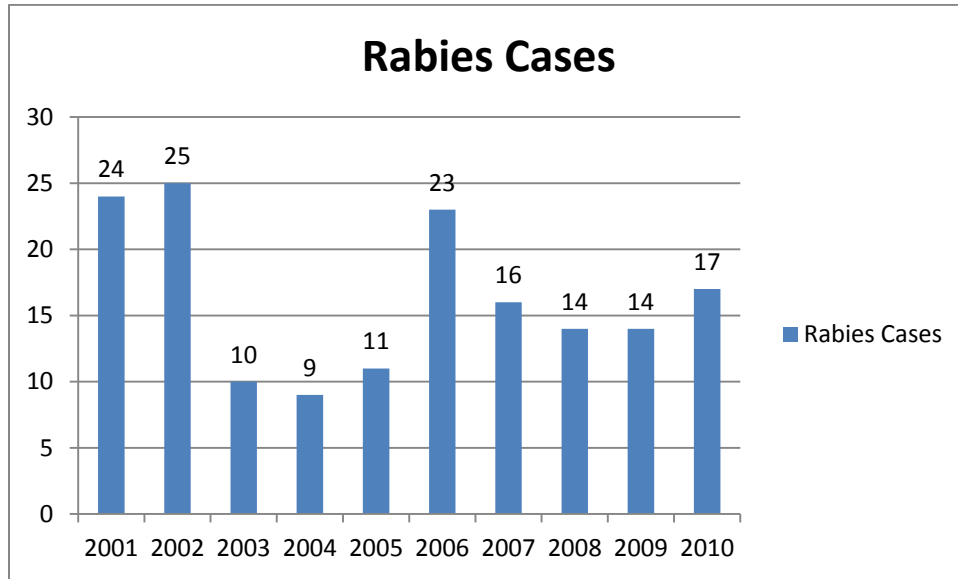
Animal Center News

This month was our first as the sole intake facility in Wake County. We welcomed Animal Control from the City of Raleigh and opened up the entire facility to the animals of Wake County! We also started a new fee schedule that is designed to encourage more people to adopt. The dog adoption fee was reduced from \$70 to \$45 and the cat adoption fee was lowered from \$50 to \$15. Cat surgery fees were also reduced from \$50 to \$30. This puts the total adoption cost for a cat at \$45 and a dog at \$95!

Expansion Construction Update

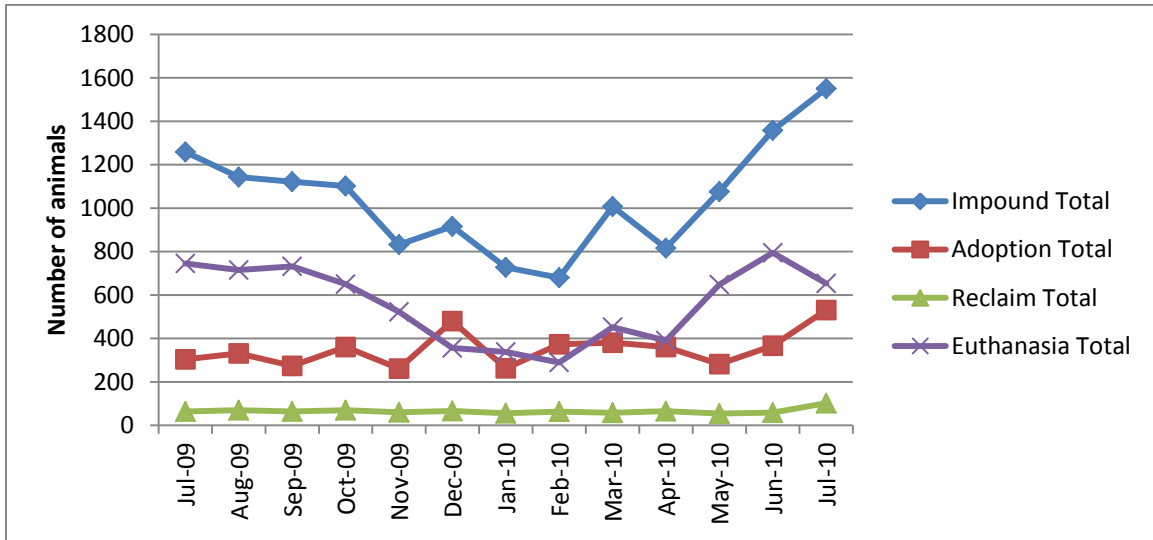
Aside from a few minor details, the construction project is complete!

Rabies: Positive confirmed laboratory cases



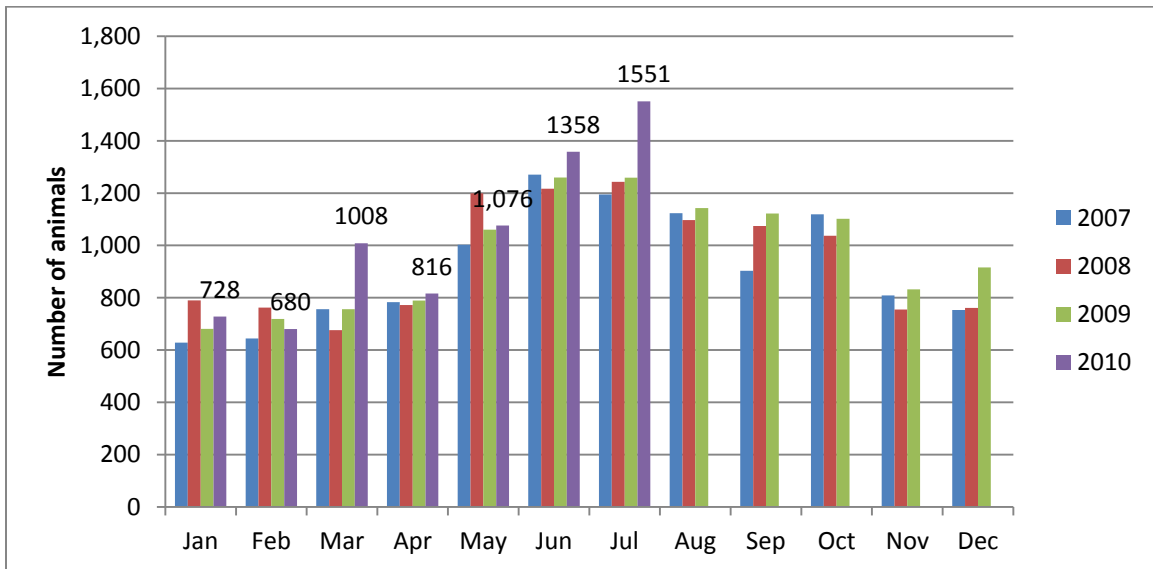
n=4 July 2010; year to date cases=17; As compared to the last few years, we are on track to have an above average year in Wake County for positive rabies cases. Wake County averages 15.8 laboratory confirmed cases each year; since 2001, raccoon tests account for 56% of all species that test positive in Wake County; rabies is enzootic (present in wildlife) in all NC counties

Animal Center Statistical Summary



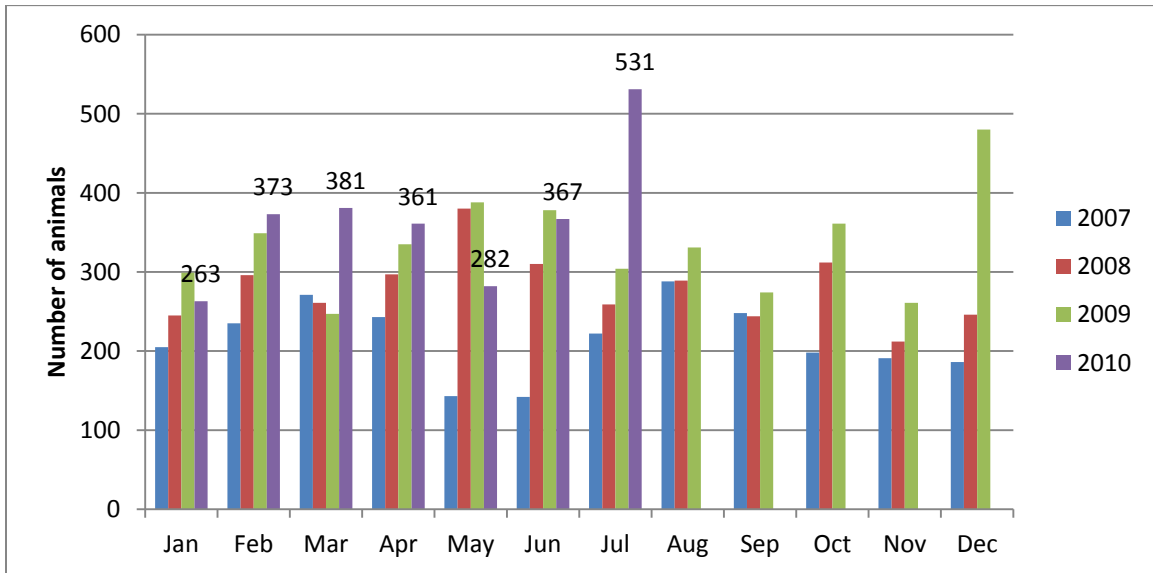
Ebb and Flow of animal intake: As depicted above, animal intake increases significantly in the warm months and drops in the cold months. This is typically associated with an increase in puppy and kitten litters in warm months. Adoptions do not normally increase to match the increase in intake so euthanasia rates can increase with intake.

Animal Center Intake monthly comparison



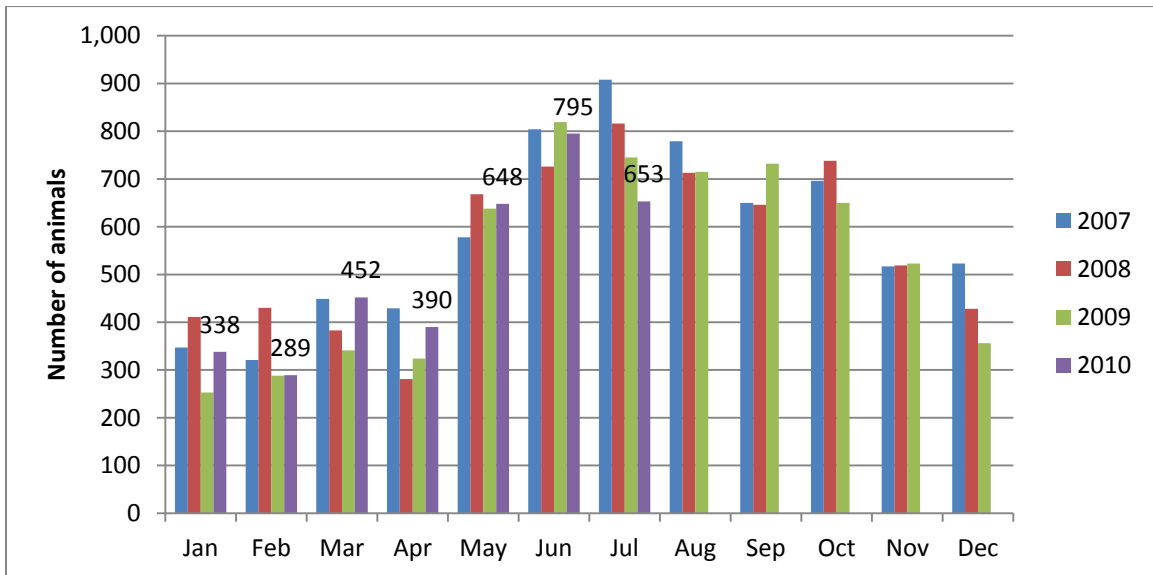
n=1551; Intake is 23% higher than July 2009 and the highest intake month on record for the Animal Center. Starting this month, the Animal Center became the sole intake facility in the County. Based on past data, we were expecting a much higher increase in animal intake.

Adoption Monthly Comparison



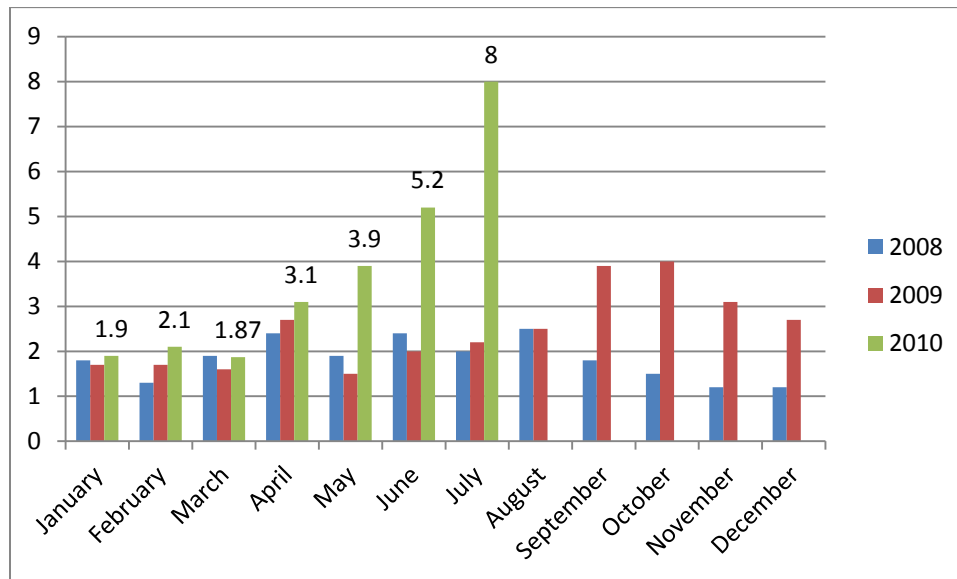
n=531; data represents a combination of typical adoptions to new families and transfers to partner rescue groups; 75% increase in adoptions over July 2009. This is a tremendous increase and we are very proud of the support we have received from the citizens of Wake County!

Euthanasia monthly comparison



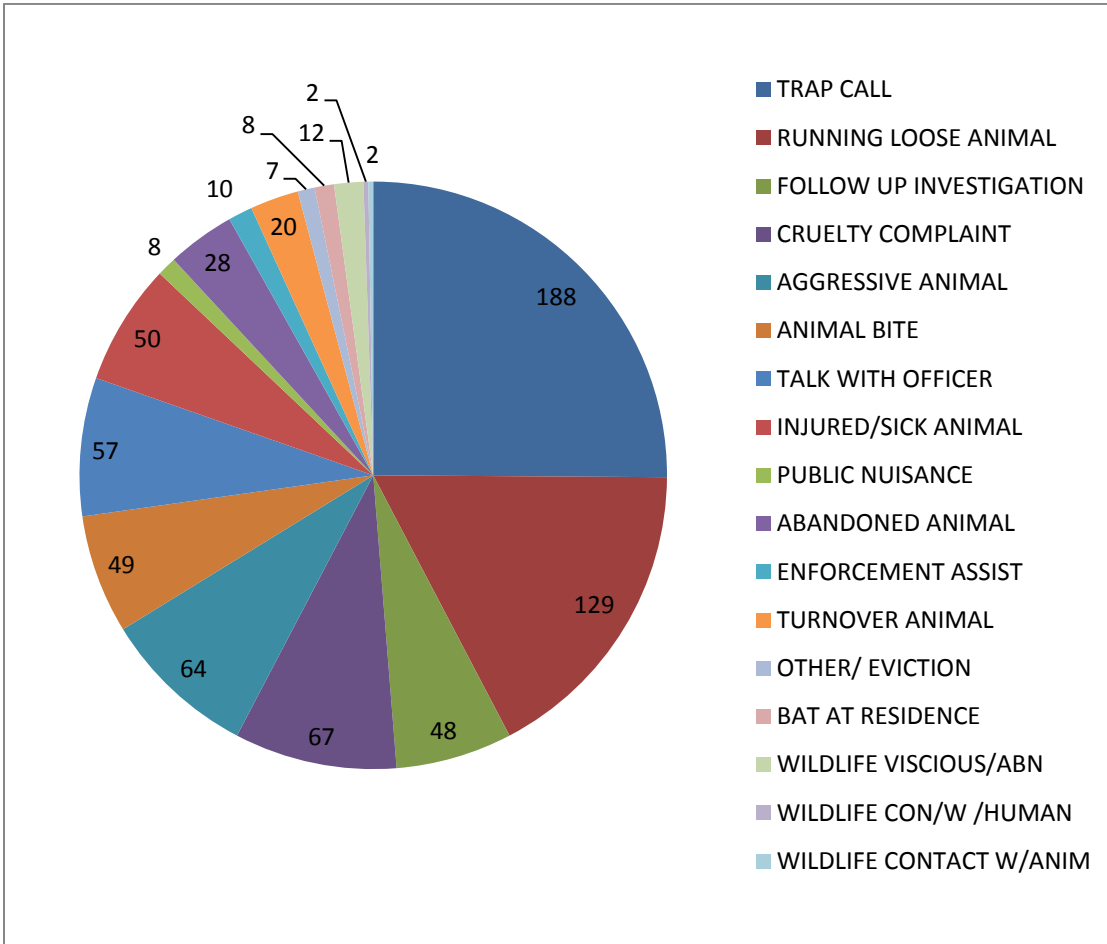
n=653; the euthanasia numbers are 12% lower than this month last year. This is very significant because even while receiving 23% more animals, we euthanized 12% less than the year before.

Volunteer hours by FTE



n=8 FTEs; Volunteers logged enough hours this month to equal 8 extra full time employees. This includes dog walking, socialization, off-site events and work promoting animals in the community, just to name a few. A big addition to our volunteer numbers is the start of our Vet-PAC program with the Pre-Vet students at NCSU. Pre-Vet students have access to this excellent program, designed by our staff and staff at NCSU, to provide pre-vet students with exposure to animals not available to most people.

Animal Control Field Data

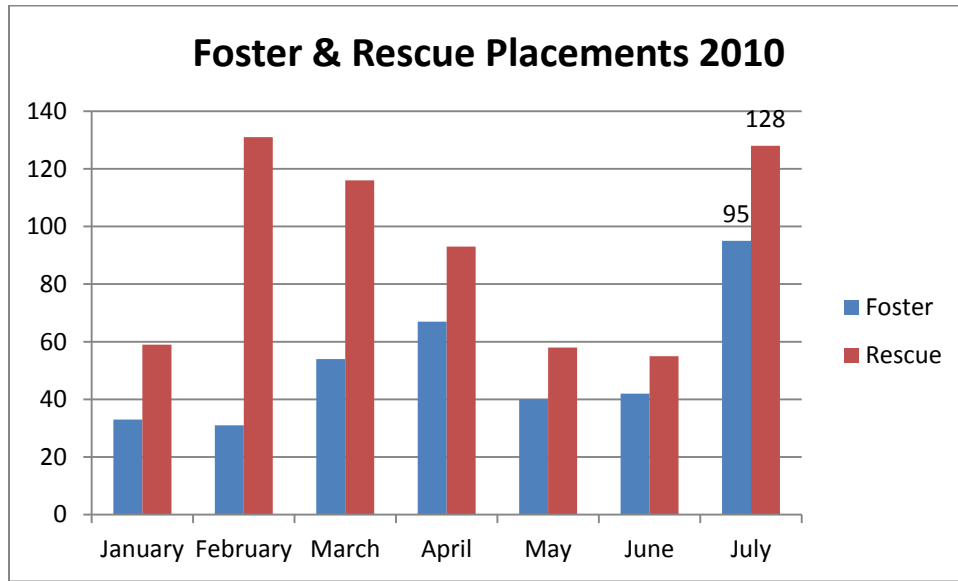


Wake County Animal Control responded to 749 requests for service in July 2010. Complaints for stray or loose animals continues to contribute to about half of all calls.

Foster and Rescue Report

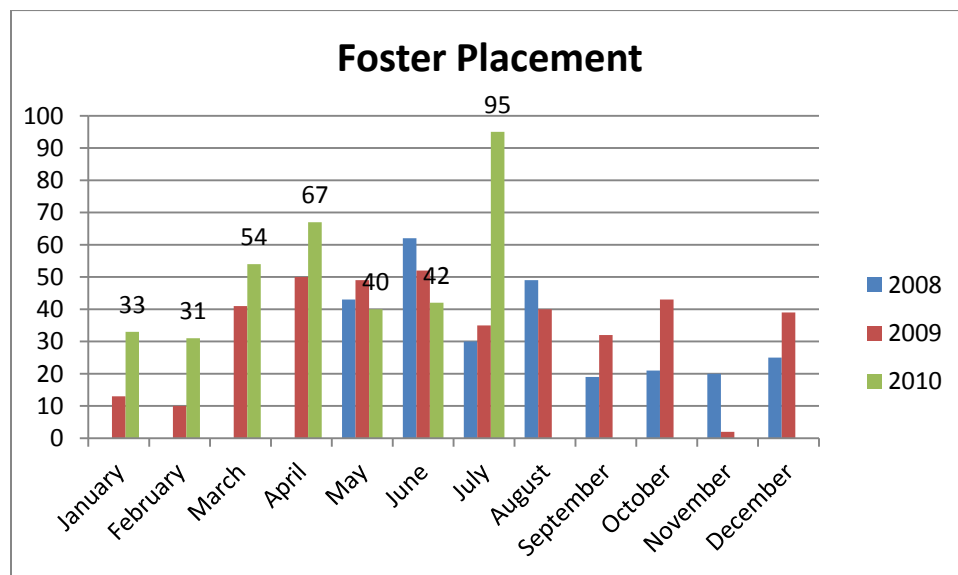
During the month of July, ninety-five (95) animals were placed into foster care. Of those, 35.8% were placed into foster to recover from an upper respiratory infection.

During the month of July, one hundred twenty-eight (128) animals were placed into the care of partnering rescue groups and shelters.



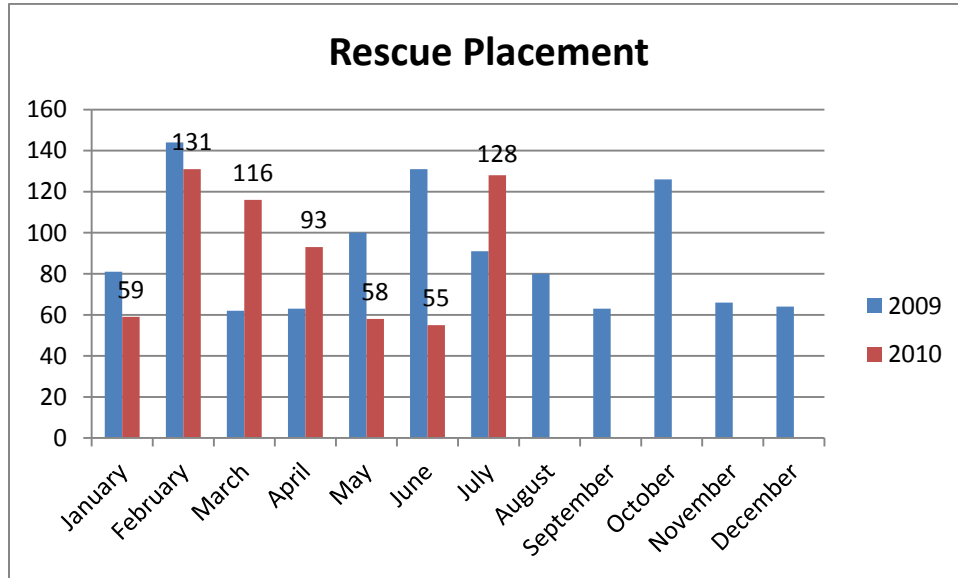
n=95 foster, 128 rescue; both our rescue partners and foster parents rallied to help support the Wake County Animal Center during the month of July.

Year over year comparison: Foster Placement



n=95; July of 2010 is a record-breaking month for the foster program. More animals were placed into foster care during this month than any other month since 2009.

Year over year comparison: Rescue Placement

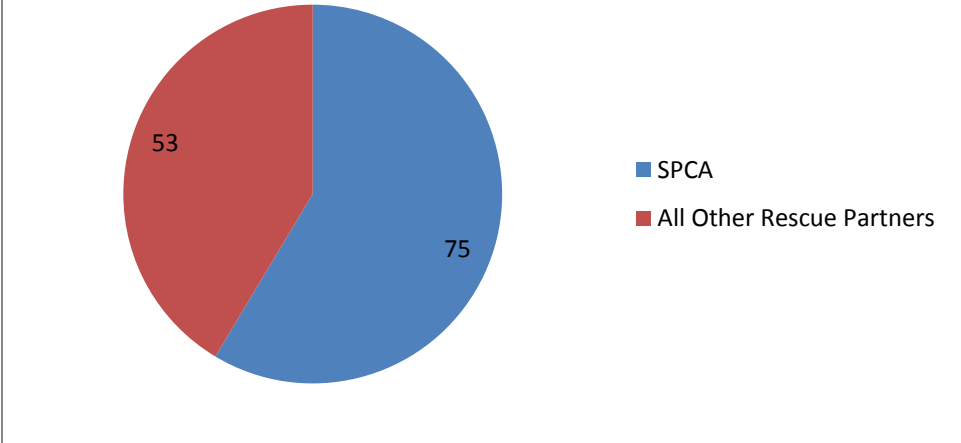


Top Canine and Feline Transfers

Shelter/Rescues	Dogs Transferred
SPCA of Wake County	40
In Our Hands	9
2 Paws Up	4
Sound Pet Animal Rescue and Referral	4
A New Leash on Life	3

Shelters/Rescues	Cats Transferred
SPCA of Wake County	30
Pet and People Foundation	7
In Our Hands	2

July 2010 Rescue Transfers



n=75; Of the 128 animals transferred to rescue partners, the SPCA of Wake County took 75 of them, or 58.6% of the animals transferred out to rescues.