

Wake County

# Animal Care, Control and Adoption

March 2010 Monthly Report



Wake County  
4/5/2010

## **Definitions**

*Intake:* Animals admitted to the Animal Center. These include animals surrendered by the general public, picked up by Animal Control and animals born at the Center.

*Adoption:* Includes animals adopted to new homes and transferred to qualifying rescue groups.

*Reclaim:* Animals reclaimed by their owners after being found as strays or after completing quarantine period.

*Euthanasia:* Animals humanely euthanized at the Center. This includes animals that reside at the Animal Center and animals surrendered by their owner for euthanasia for medical or behavioral reasons.

NOTE: The data included in the graphs below represent all types of animals except for the data table on page 7. That table only includes dogs and cats, which represent the vast majority of the animals we deal with.

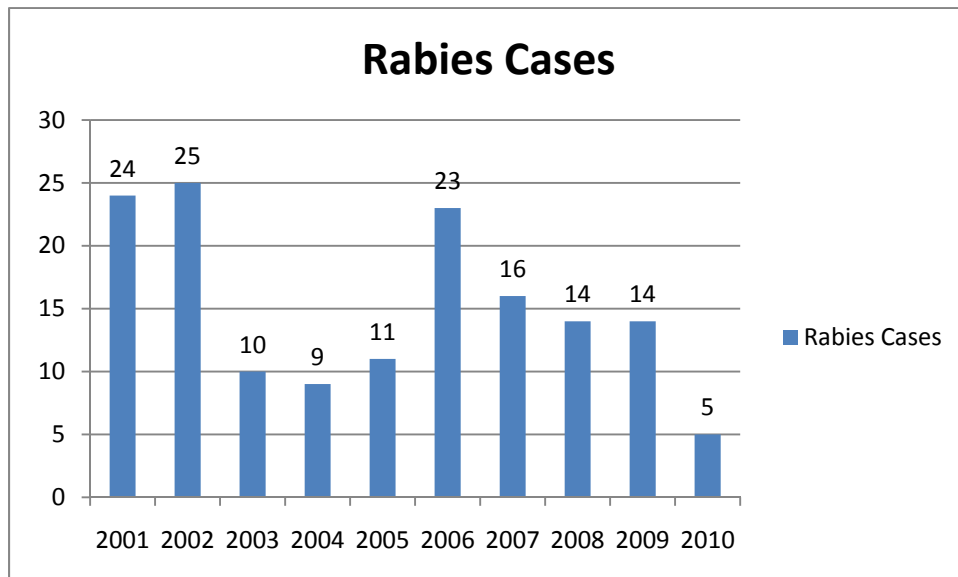
## **Animal Center News**

This month, Wake County Animal Control was involved in two animal hoarding cases where large numbers of animals were surrendered to the County. Between the two cases, there were 114 cats and 44 dogs. This accounts for a large portion of our intake increase and our euthanasia increase. Many of the animals were saved and are still available for adoption at the Center or were transferred to local rescue groups and shelters. Big thanks to Cat Angels, Safe Haven for Cats, the SPCA of Wake County and Franklin County Animal Control for help on these cases.

## **Expansion Construction Update**

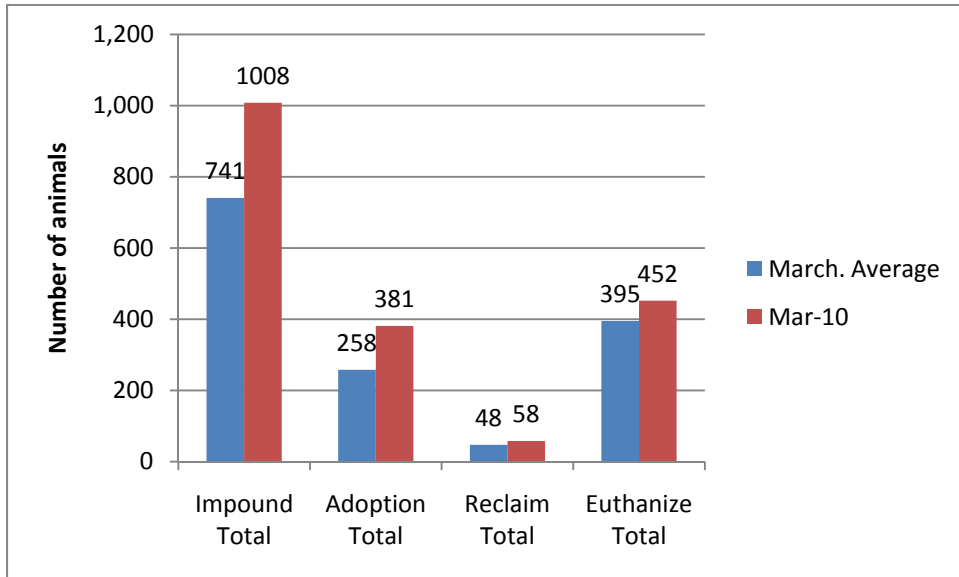
Sorry, no pictures available for March, but rest assured, the project has been moving along well. March brought the completion of the new air handlers and prep for the replacement of the three existing air handlers. We are also preparing for the new flooring and painting in the new areas.

**Rabies: Positive confirmed laboratory cases**

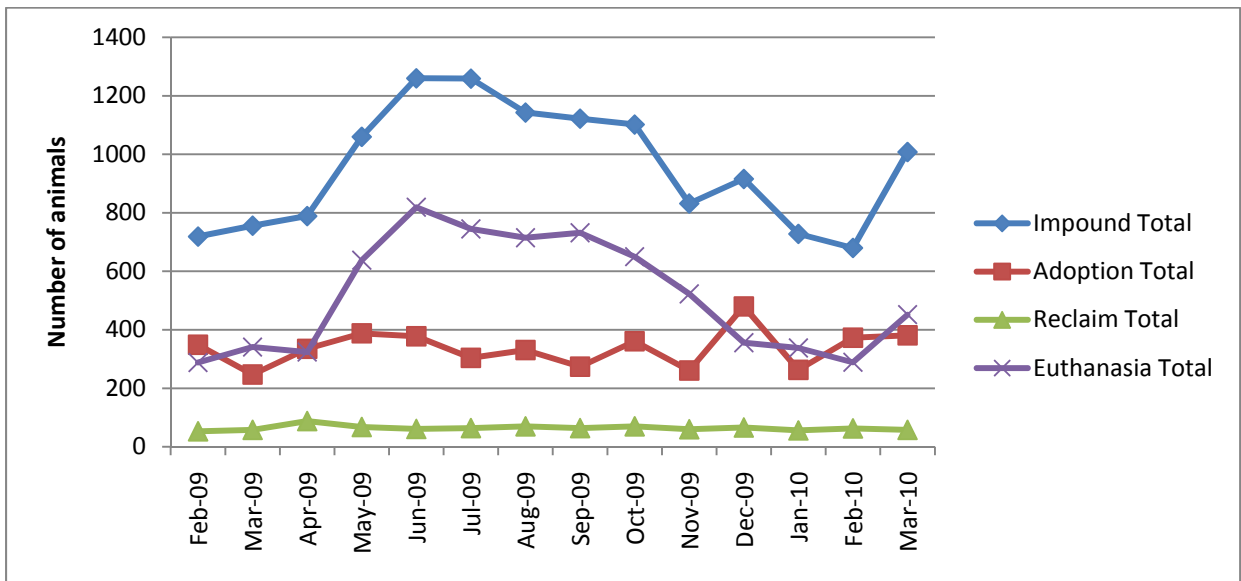


n=3 March 2010; year to date cases=5; Wake County averages 15.8 laboratory confirmed cases each year; since 2001, raccoon tests account for 56% of all species that test positive in Wake County; rabies is enzootic (present in wildlife) in all NC counties

## Animal Center Statistical Summary

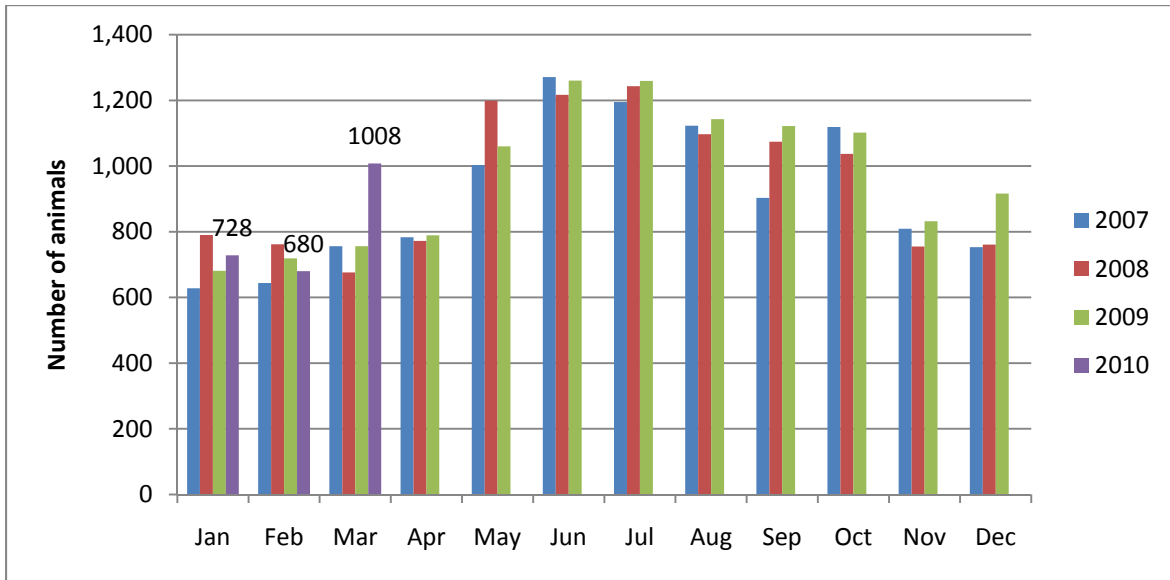


March 2010: Intake is 36% higher than the average, Adoptions are 48% higher, Reclaims are 21% higher and euthanasia is 14% higher than the average. *Note: Averages include data from FY02 until the current month*



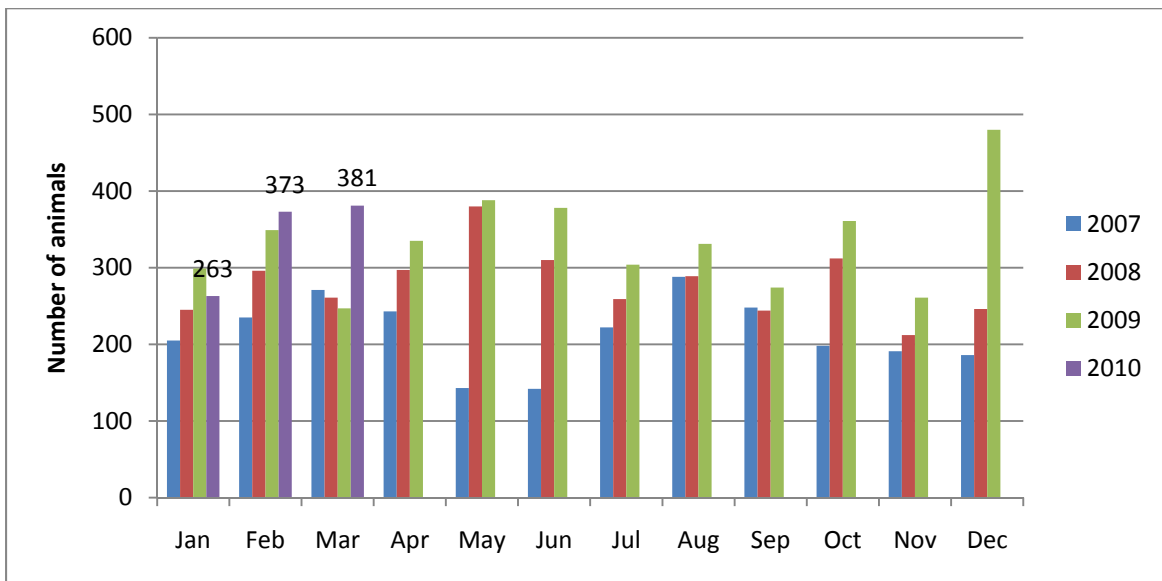
**Ebb and Flow of animal intake:** As depicted above, animal intake increases significantly in the warm months and drops in the cold months. This is typically associated with an increase in puppy and kitten litters in warm months. Adoptions do not normally increase to match the increase in intake so euthanasia rates can increase with intake.

### Animal Center Intake monthly comparison



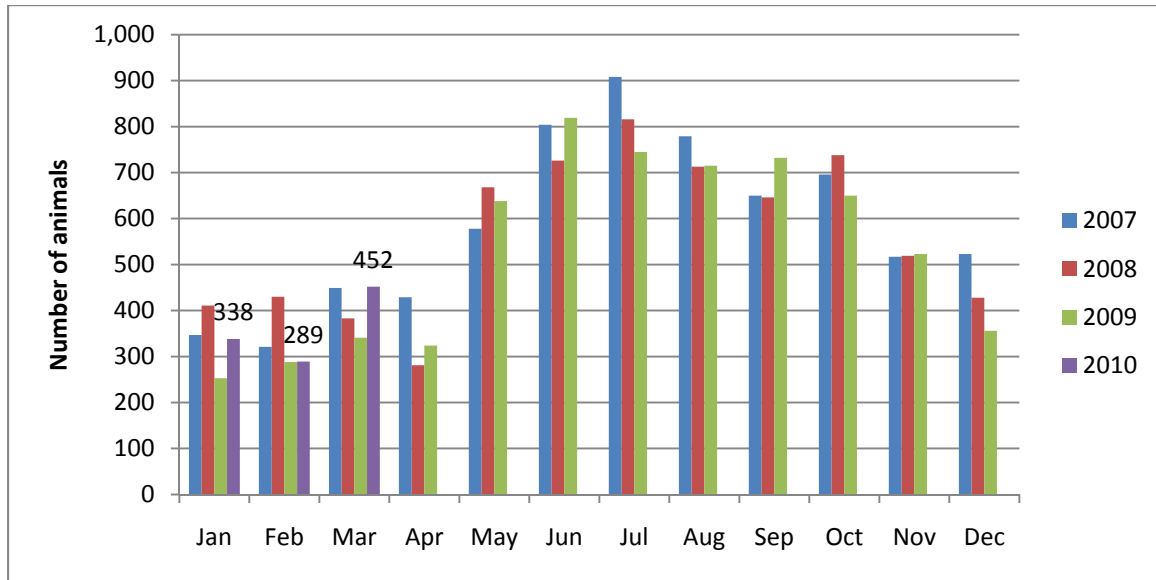
*n=1008; Intake is 33% higher than March 2009.*

### Adoption Monthly Comparison



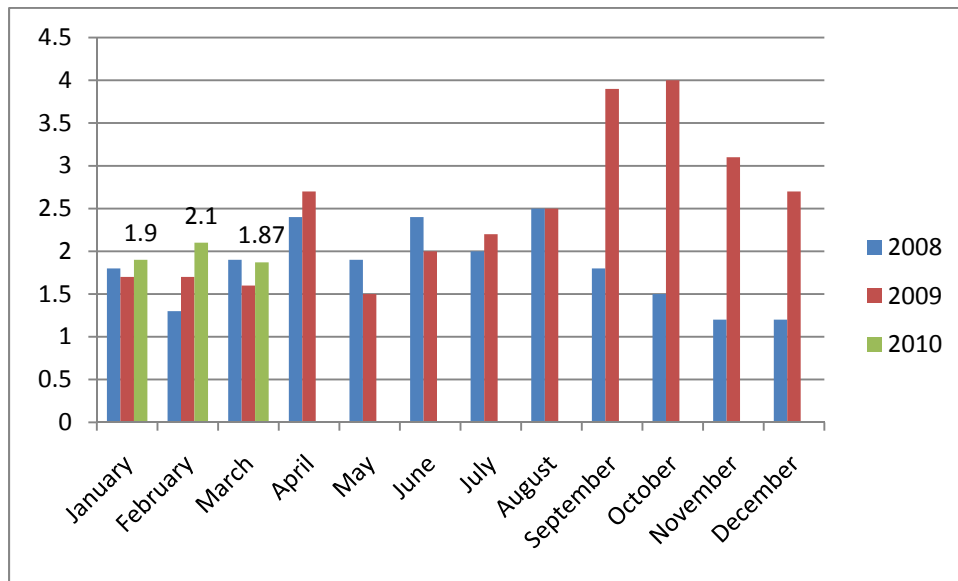
*n=381; data represents a combination of typical adoptions to new families and transfers to partner rescue groups; 54% increase in adoptions over March.*

### Euthanasia monthly comparison



*n=452; the euthanasia numbers are less than 33% higher than this month last year.*

### Volunteer hours by FTE



*n=1.87 FTEs; Volunteers logged enough hours this month to equal 1.87 extra full time employees. This includes dog walking, socialization, off-site events and work promoting animals in the community, just to name a few.*

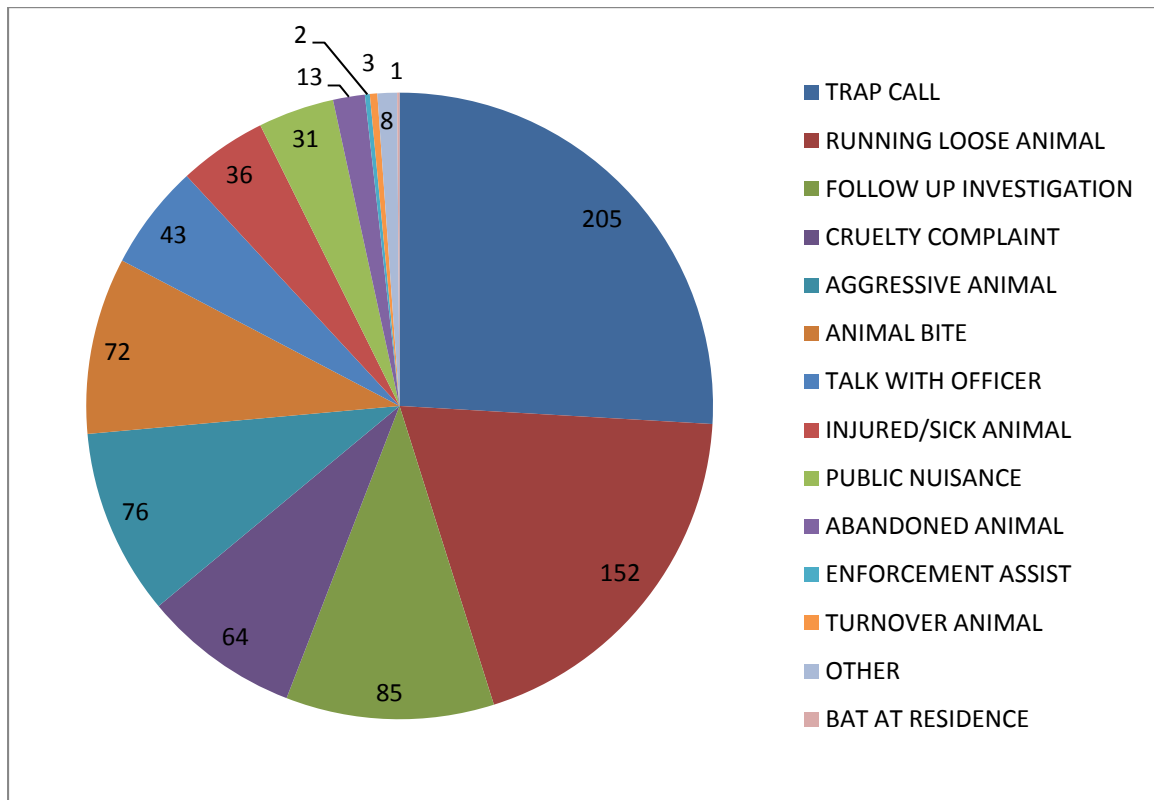
# Animal Shelter Statistics for period *March 1-31, 2010*

Year to year comparison is over the same timeframe each year.	2007-2008		2008-2009		2009-2010 (YTD)						
	Count	Perf.	Count	Perf.	1st Q	2nd Q	Jan-10	Feb-10	Mar-10	YTD	Performance
Impound Dog	3,720		3,957		1492	1392	397	403	487	4171	
Impound Cat	4,120		3,851		1944	1397	312	266	481	4400	
<b>Impound Total</b>	<b>7,840</b>		<b>7,808</b>		<b>3436</b>	<b>2789</b>	<b>709</b>	<b>669</b>	<b>968</b>	<b>8571</b>	
Garner Animal Control Intake					96	90	22	30	21	259	
Cary Animal Control Intake					54	59	22	8	16	159	
Adoption Dog	1,456	39.1%	1,664	42.1%	651	711	182	246	249	2039	48.9%
Adoption Cat	517	12.5%	612	15.9%	217	348	76	107	113	861	19.6%
<b>Adoption Total</b>	<b>1,973</b>	<b>25.2%</b>	<b>2,276</b>	<b>29.1%</b>	<b>868</b>	<b>1059</b>	<b>258</b>	<b>353</b>	<b>362</b>	<b>2900</b>	<b>33.8%</b>
Reclaim Dog	432	11.6%	492	12.4%	171	179	42	56	52	500	12.0%
Reclaim Cat	52	1.3%	57	1.5%	27	15	14	7	3	66	1.5%
<b>Reclaim Total</b>	<b>484</b>	<b>6.2%</b>	<b>549</b>	<b>7.0%</b>	<b>198</b>	<b>194</b>	<b>56</b>	<b>63</b>	<b>55</b>	<b>566</b>	<b>6.6%</b>
Euthanize Dog	1,682	45.2%	1,528	38.6%	569	478	107	106	134	1394	33.4%
Euthanize Cat	3,535	85.8%	3,119	81.0%	1605	1044	227	177	314	3367	76.5%
<b>Euthanize Total</b>	<b>5,217</b>	<b>66.5%</b>	<b>4,647</b>	<b>59.5%</b>	<b>2174</b>	<b>1522</b>	<b>334</b>	<b>283</b>	<b>448</b>	<b>4761</b>	<b>55.5%</b>

FOSTER-TO-ADOPT PROGRAM	FY 09	1st Q	2nd Q	Jan-10	Feb-10	Mar-10	FY10
Animals Placed into Program	188	155	182	32	56	63	676
Adoptions Completed		104	100	44	34	64	346
Animals Returned		6	6	4	5	4	25
Animals Remaining in FTA							305

**\*The large chart above represents both a listing of monthly performance and a comparison to the last two years. The same amount of months is compared for each year. For example, it shows that in FY08 at this time of the year, we had adopted out 24.1% of animals, in FY09 28.8% and this fiscal year 33.4% have been adopted.**

## Animal Control Field Data



Wake County Animal Control responded to 791 requests for service in March 2010. Two of these calls involved cases of animal hoarding, one resulting in the surrender of 45 cats and the second resulted in the surrender of 64 cats and 44 dogs to the County.



## Rescue Report

Starting this month, we will be highlighting the peer shelters and rescues that help our animals the most each month. In total, 116 animals were transferred to local shelters and rescues. Big thanks to these local groups for helping with the hoarding cases which could have overwhelmed the system without help.

Shelter/Rescues	Cats Transferred
Safe Haven For Cats	14
SPCA of Wake County	13
Mitchell Mill Animal Hospital	4
2 Paws Up	3
Falkner Animal Rescue and Recovery	2
Paw Prints Animal Rescue	2
Siamese Cat Rescue Center	2
Animall	1

Shelter/Rescues	Dogs Transferred
SPCA of Wake County	25
Falkner Animal Rescue and Recovery	6
Sound Pet Animal Rescue and Referral	6
A New Leash On Life	4
HEART	4
Paw Prints Animal Rescue	3
Neuse River Golden Retriever Rescue	3
All Breed Animal Rescue of the Carolinas	2
Best Friend Pet Adoption	2
Cocker Spaniel Adoption Center	2

Shelter/Rescues	Little Critters Transferred
Cape Fear House Bunny Rabbit Society	4
Animall	2

### Foster Program:

There were fifty-four (54) animals placed into foster care during the month of March. All animals placed were for a medical condition or were part of a newborn litter.