

Wake County

Animal Care, Control and Adoption

November 2009 Monthly Report



Wake County
12/10/2009

Definitions

Intake: Animals admitted to the Animal Center. These include animals surrendered by the general public, picked up by Animal Control and animals born at the Center.

Adoption: Includes animals adopted to new homes and transferred to qualifying rescue groups.

Reclaim: Animals reclaimed by their owners after being found as strays or after completing quarantine period.

Euthanasia: Animals humanely euthanized at the Center. This includes animals that reside at the Animal Center and animals surrendered by their owner for euthanasia for medical or behavioral reasons.

NOTE: The data included in the graphs below represent all types of animals except for the data table on page 6. That table only includes dogs and cats, which represent the vast majority of the animals we deal with.

News and Significant Events

Mutt Strutt 2009- Animal lovers and their canine companions enjoyed a day of fun in the sun at the Historic Oak View County Park on Saturday, November 7, 2009 for the 10th annual dog walk. \$4,648.87 was raised to assist with the Animal Foster Care Program that was established in June 2008.

Activities for the day included a rabies and microchip clinic. Three hundred and twenty-eight animals received rabies vaccinations. One hundred fifteen animals received a microchip, which when scanned by a chip reader, provides information on the home address and owner.

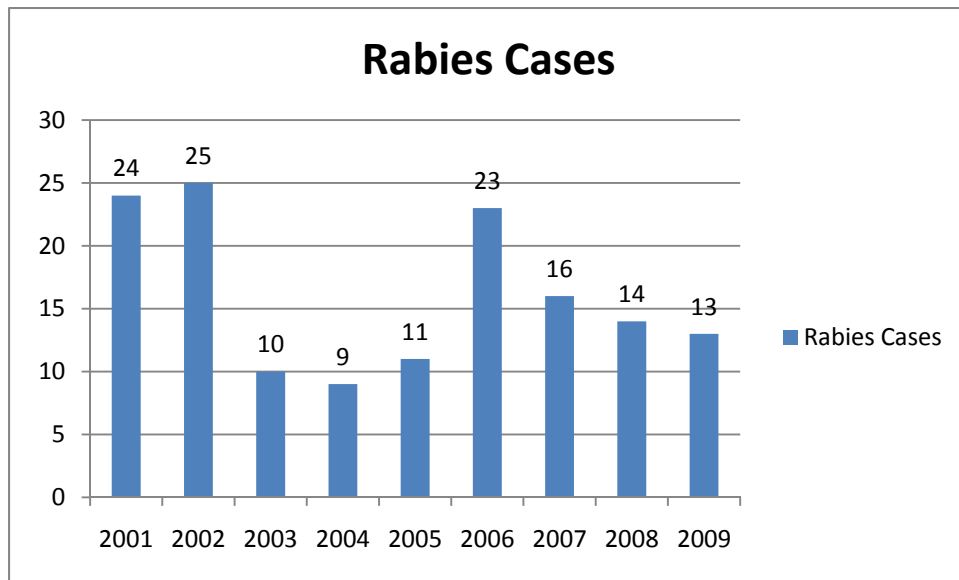
Dogs of all sizes and shapes enjoyed a beautiful day at the park. Animals and their owners participated in contests such as Best Look-A-Like, Best Trick, Best Costume, and Cutest Mutt. Canine Good Citizen testing was available to dog owners to see if their 4-legged friend is a good citizen. Demonstrations included Agility by Town, Country Animal Care Center and Top Dog Training Academy. There were demonstrations of law enforcement dogs by the Wake County Sheriff's Office and NC Department of Corrections. Mutt Strutt t-shirts and tote bags were given out for a \$5 donation totaling \$740. A raffle rounded out the day's activities taking in \$786 in donation.

Eighty- three vendors were on hand to provide information to the over 1000 people in attendance.

Outreach

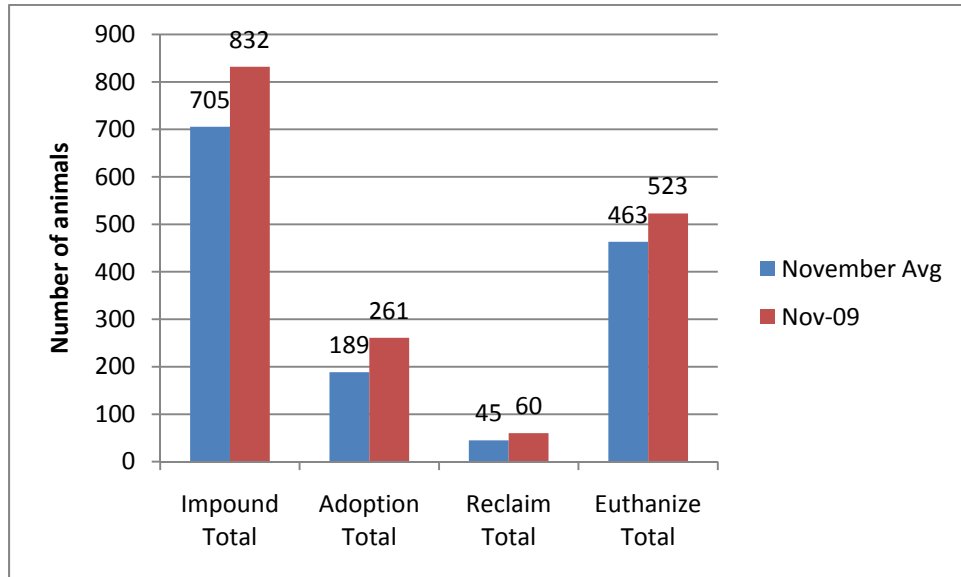
- Dog and Puppy Behavior Training was hosted at the center, offered to foster care givers, potential foster care givers and New Hope Placement partners. Evaluations were handed out at the end of the workshop with a 1-4 rating. The average rating for this class was a 3.80. The speaker for this class was Dr. Margret Gruen.
- Staff worked with Lufkin Middle School student during their “Bolts of Kindness” campaign. \$600 and many donations of pet supplies were raised with the students during this campaign to assist the foster animal program.

Rabies: Positive confirmed laboratory cases

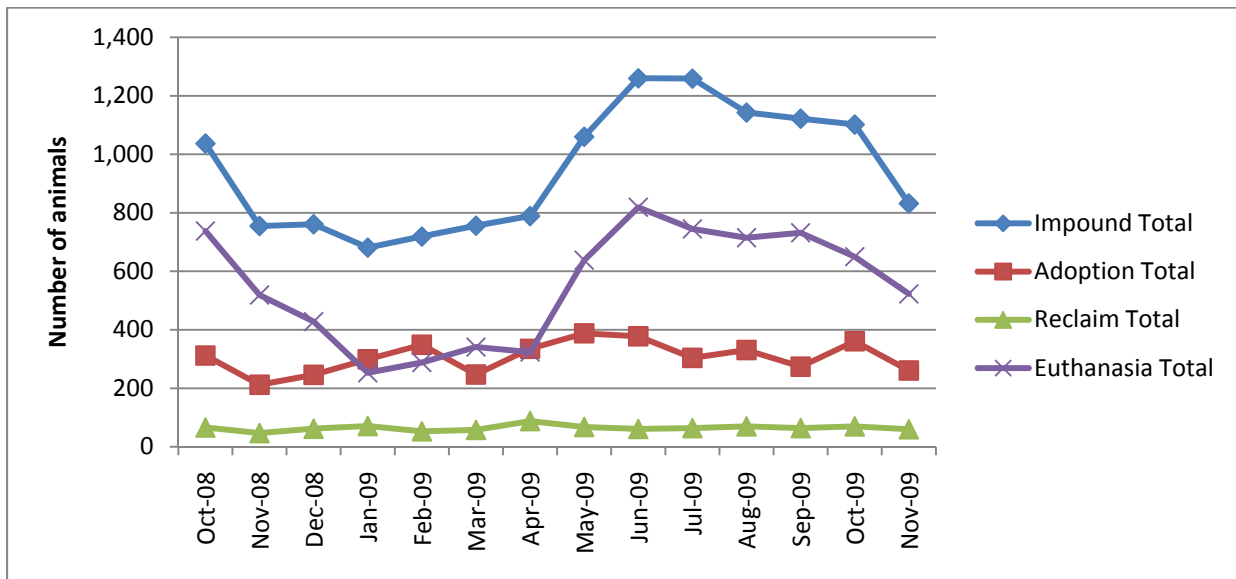


n=0 November 2009; year to date cases=13; Wake County averages 16.5 laboratory confirmed cases each year; since 2001, raccoon tests account for 56% of all species that test positive in Wake County; rabies is enzootic (present in wildlife) in all NC counties

Animal Center Statistical Summary

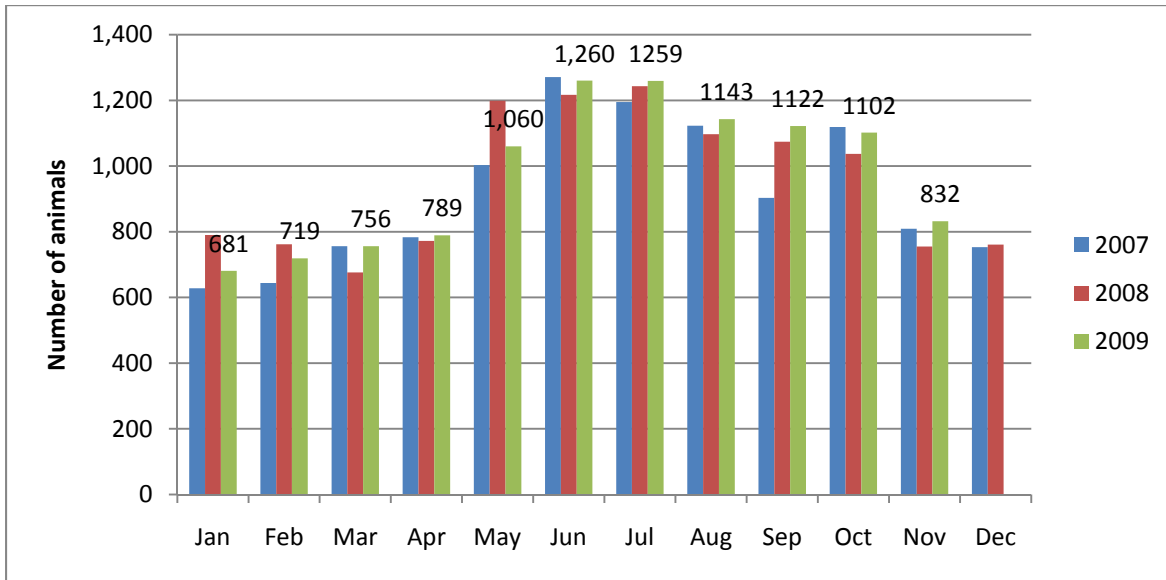


November 09 Intake is 18% higher than the average, Adoptions are 38% higher, Reclaims are 33% higher and euthanasia is 13% higher than the average. *Note: Averages include data from FY02 until the current month*



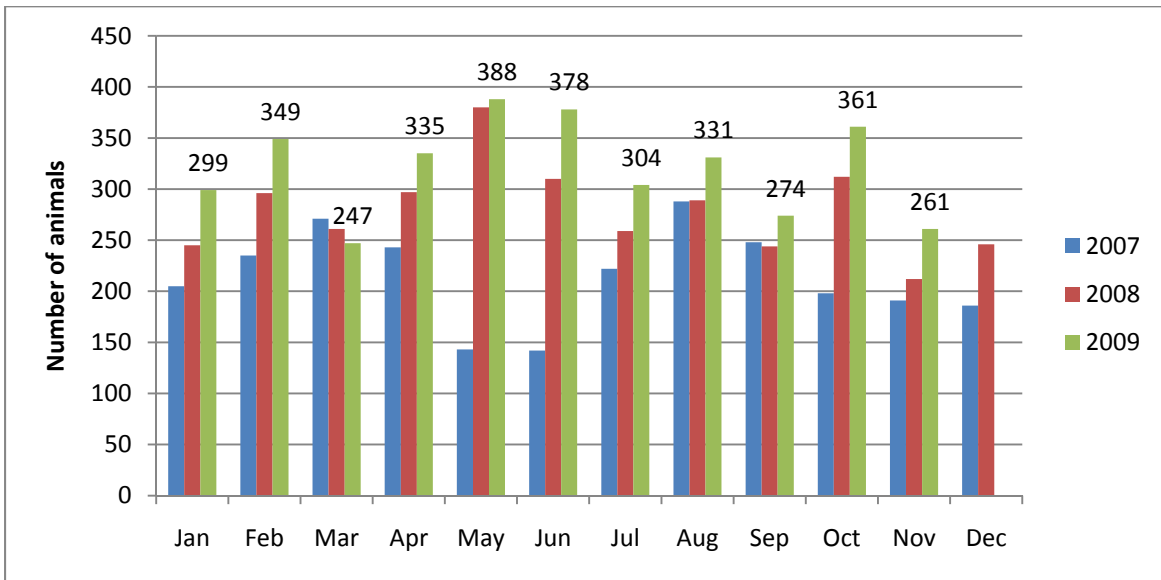
Ebb and Flow of animal intake: As depicted above, animal intake increases significantly in the warm months and drops in the cold months. This is typically associated with an increase in puppy and kitten litters in warm months. Adoptions do not normally increase to match the increase in intake so euthanasia rates can increase with intake.

Animal Center Intake monthly comparison



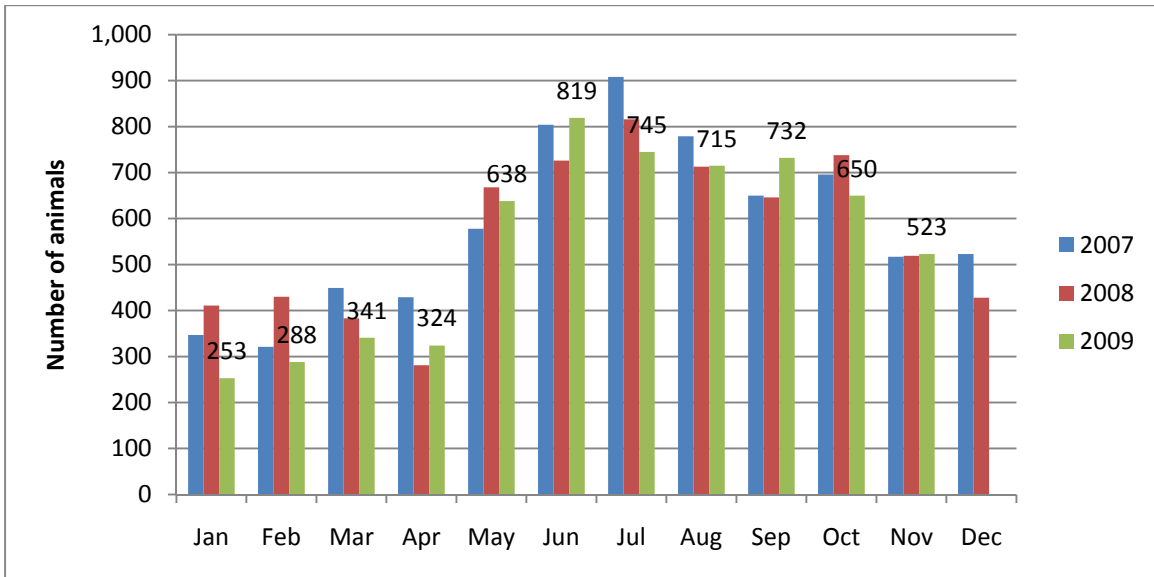
n=832; Intake is 10% higher than November 2008.

Adoption monthly comparison



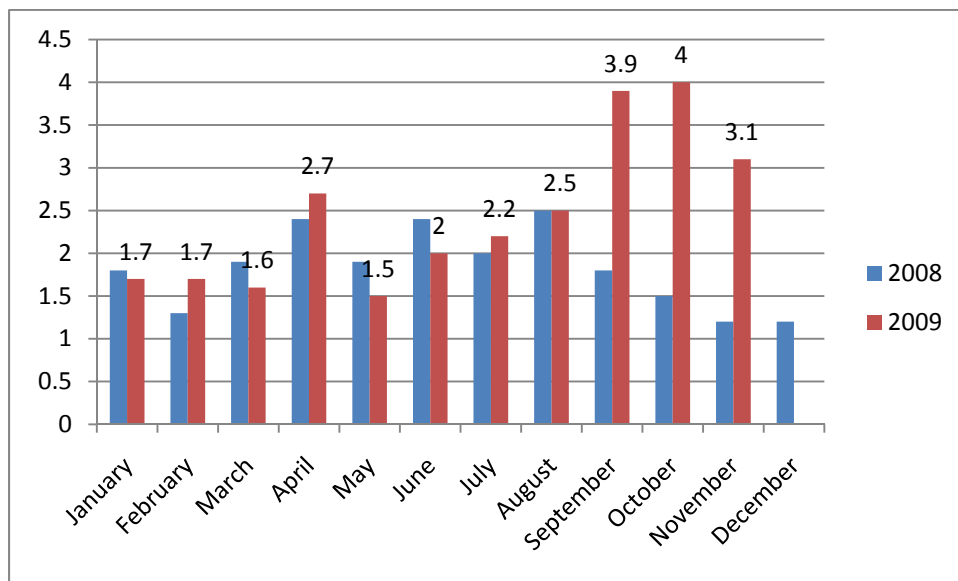
n=261; data represents a combination of typical adoptions to new families and transfers to partner rescue groups; 23% increase in adoptions over November 2008. Over the past three years, the Center has increased adoptions in November significantly each year.

Euthanasia monthly comparison



n=523; the euthanasia numbers are less than 1% lower than this month last year.

Volunteer hours by FTE



n=3.1 FTEs; Volunteers logged enough hours this month to equal 3.1 extra full time employees. This includes dog walking, socialization, off-site events and work promoting animals in the community, just to name a few.

Animal Center Statistics for period **November 1-30, 2009**

Year to year comparison is over the same timeframe each year.	2007-2008		2008-2009		2009-2010 (YTD)				
	Count	Perf.	Count	Perf.	1st Q	Oct-09	Nov-09	YTD	Performance
Impound Dog	1,986		2,311		1492	461	414	2367	
Impound Cat	2,970		2,768		1944	614	409	2967	
Impound Total	4,956		5,079		3436	1075	823	5334	
Garner Animal Control Intake					96	36	28	160	
Cary Animal Control Intake					54	16	25	95	
Adoption Dog	687	34.6%	931	40.3%	651	247	181	1079	45.6%
Adoption Cat	343	11.5%	324	11.7%	217	98	72	387	13.0%
Adoption Total	1,030	20.8%	1,255	24.7%	868	345	253	1466	27.5%
Reclaim Dog	225	11.3%	268	11.6%	171	68	54	293	12.4%
Reclaim Cat	28	0.9%	37	1.3%	27	1	5	33	1.1%
Reclaim Total	253	5.1%	305	6.0%	198	69	59	326	6.1%
Euthanize Dog	911	45.9%	1,010	43.7%	569	168	178	915	38.7%
Euthanize Cat	2,590	87.2%	2,376	85.8%	1605	481	343	2429	81.9%
Euthanize Total	3,501	70.6%	3,386	66.7%	2174	649	521	3344	62.7%

FOSTER-TO-ADOPT PROGRAM	FY 09	Jul-09	Aug-09	Sep-09	Oct-09	Nov-09	FY10
	Animals Placed into Program	188	44	50	61	38	
Adoptions Completed		20	46	38	44	25	173
Animals Returned		0	2	4	1	1	8
Animals Remaining in FTA							251

Outreach

Animal Disposition Statistics for Mobile Offsite Events November 2009

Animals taken to offsite events	20
Animal Carried Over from last Month	23
Animals adopted at offsite events	7
Animals adopted within 3 days of offsite events	3
Animals adopted after 3 days of offsite events	9
Reclaimed	0
Animals transferred to rescue or fostered	0
Animals euthanized (3 different animal showcases 7	7
Carry over to next month	17
50% adopted within 3 days of events, 44.19% adoption	

Animal Disposition Statistics for On-Air Events November 2009

Animals On Air	5
Animals carried over from previous	0
Animal Adopted	3
Animals Transferred or Rescued	1
Animals Euthanized	1
Animals Carried over to next month	0

60% adopted, 20% in foster,
20% euthanized

Wake County Foster Program Application Statistics
November 2009

Incoming Foster Applications		Application Status	
Application Source (year-to-date)		Applications Received (YTD)	225
Internet	184	Applications Approved- Active (YTD)	49
<i>Email</i>	5	Applications Approved –Inactive	32
<i>Other</i>	37	Applications Denied (YTD)	13
Total	225	Applications Withdrawn (YTD)	35
Applicant Sources (year-to-date)		Applications Under Review/In-Process	34
General Public	197	Application Filed	62
Wake County Employees	28		
		Foster Homes Active this Month	23
Total	225		

Wake County Foster Program Animal Fostering Statistics
November 2009

Animals Currently In Foster Care		Animals Placed In Foster This Period	
Bird	2	Rabbit	0
Cat	9	Cat	0
Dog	2	Dog	0
Kitten	41	Kitten	2
Puppy	4	Puppy	0
Rabbit	4	Other	0
Rodent	3		
Fowl	1		
Other	0		
TOTAL	66	TOTAL	2
Total Animals Placed in Foster Care (Since July 2008)			531
Total Animals Placed In Foster Care (FY 10 year-to-date)			152