

Wake County

# Animal Care, Control and Adoption

April 2011 Monthly Report



Wake County  
5/12/2011

## Definitions

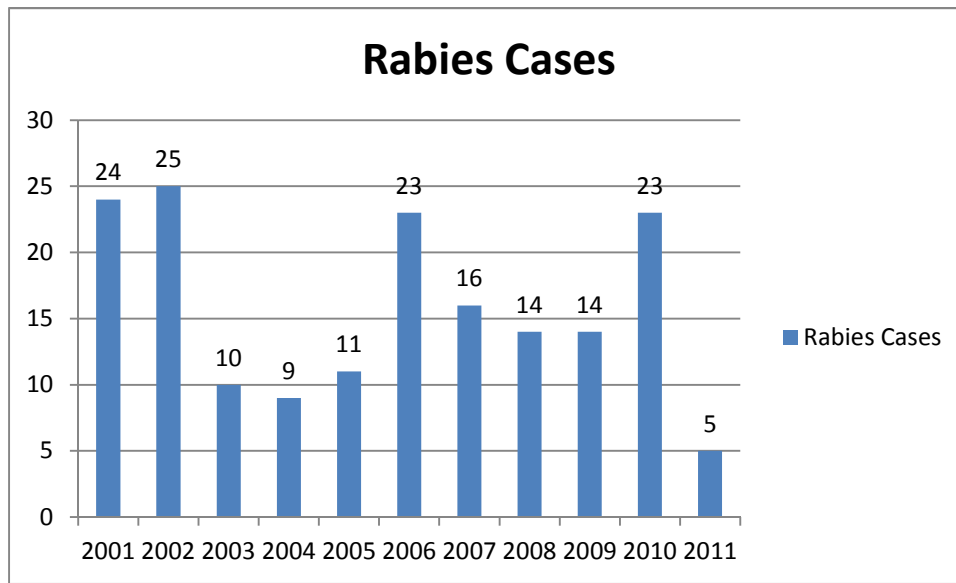
*Intake:* Animals admitted to the Animal Center. These include animals surrendered by the general public, picked up by Animal Control and animals born at the Center.

*Adoption:* Includes animals adopted to new homes and transferred to qualifying rescue groups.

*Reclaim:* Animals reclaimed by their owners after being found as strays or after completing quarantine period.

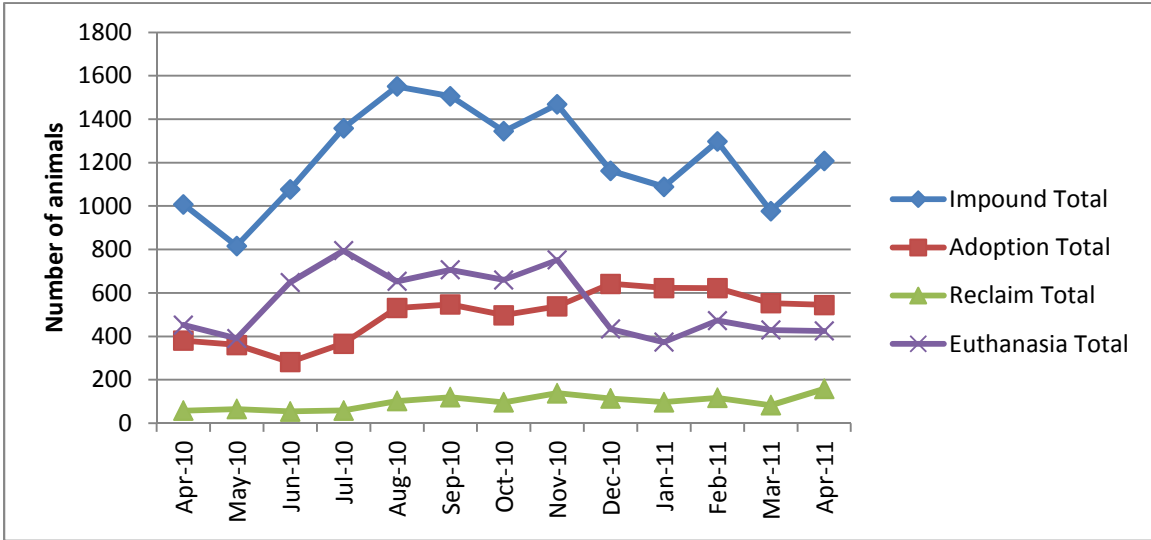
*Euthanasia:* Animals humanely euthanized at the Center. This includes animals that reside at the Animal Center and animals surrendered by their owner for euthanasia for medical or behavioral reasons.

## Rabies: Positive confirmed laboratory cases



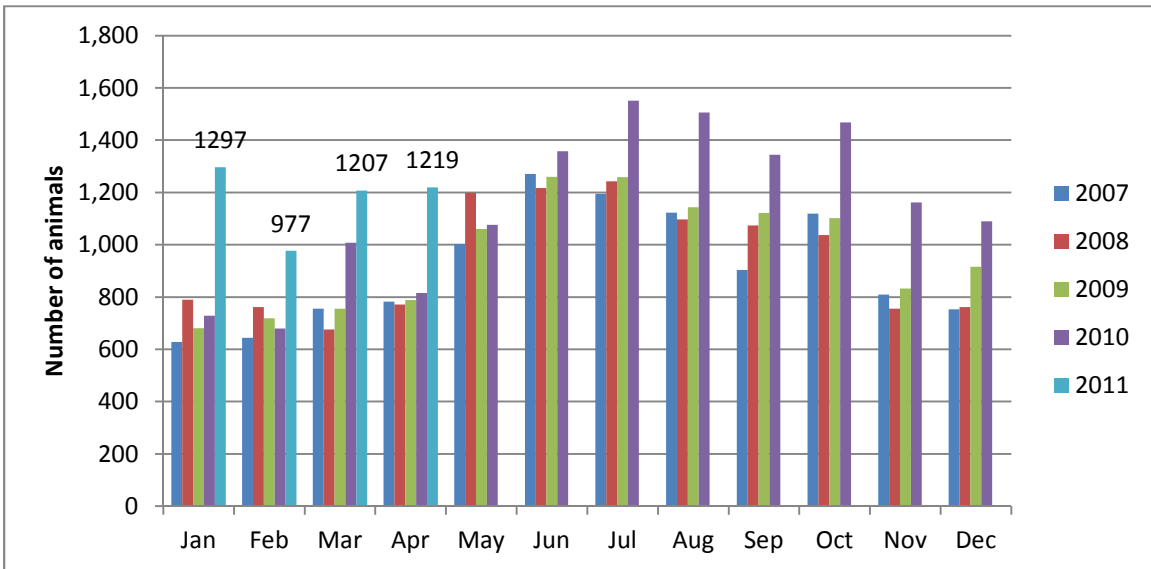
n=5; April 2011; year to date cases=5;

## Animal Center Statistical Summary



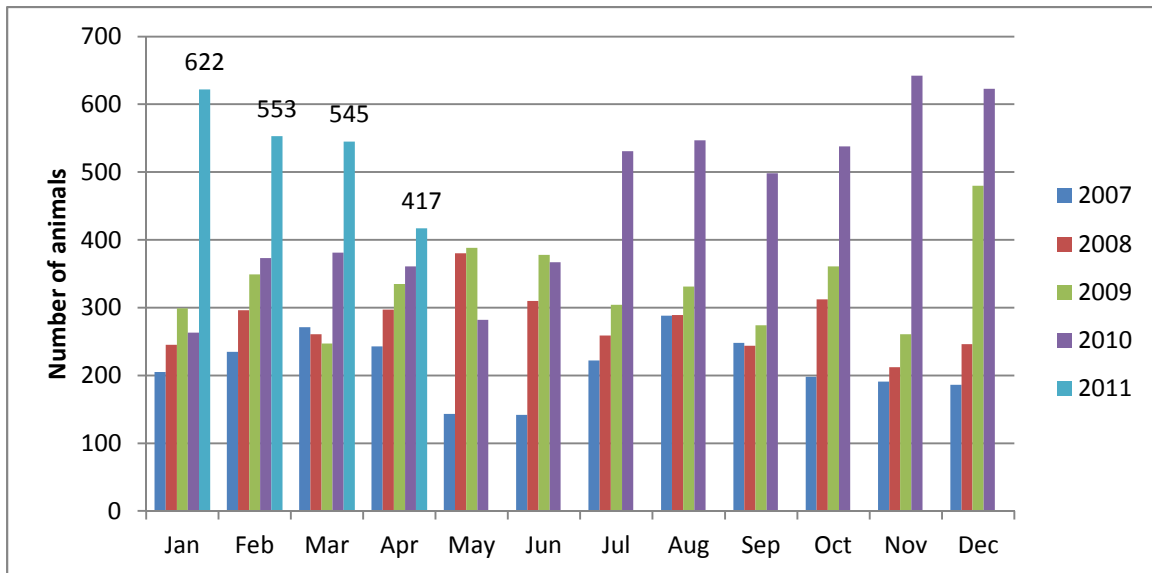
**Ebb and Flow of animal intake:** As depicted above, animal intake increases significantly in the warm months and drops in the cold months. This is typically associated with an increase in puppy and kitten litters in warm months. Adoptions do not normally increase to match the increase in intake so euthanasia rates can increase with intake.

## Animal Center Intake monthly comparison



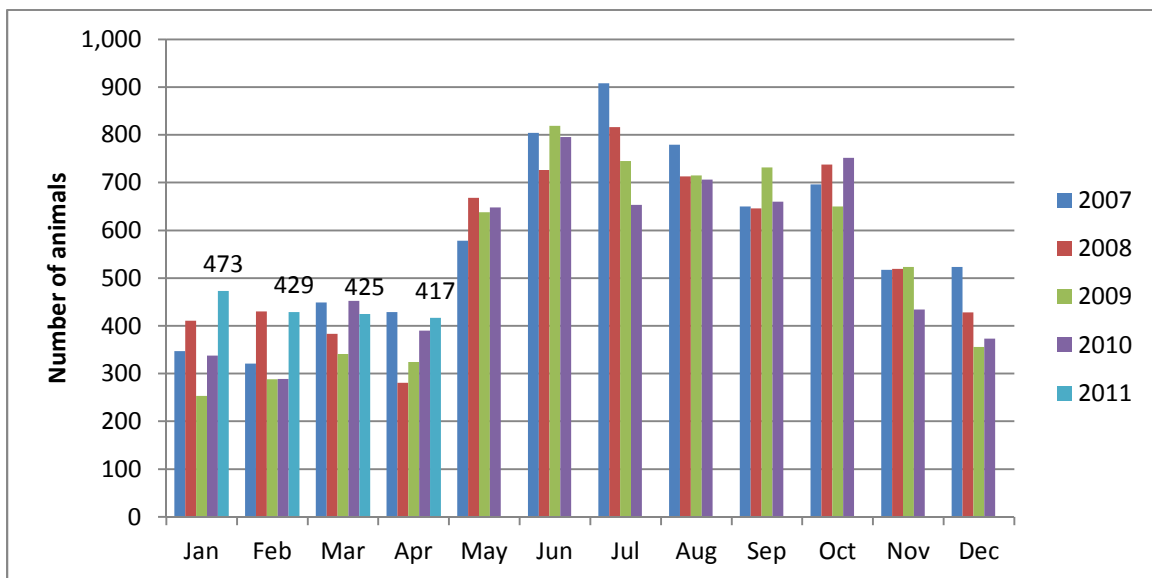
*n=1219; Intake is 49% higher than April 2010.*

### Adoption/Transfer Monthly Comparison



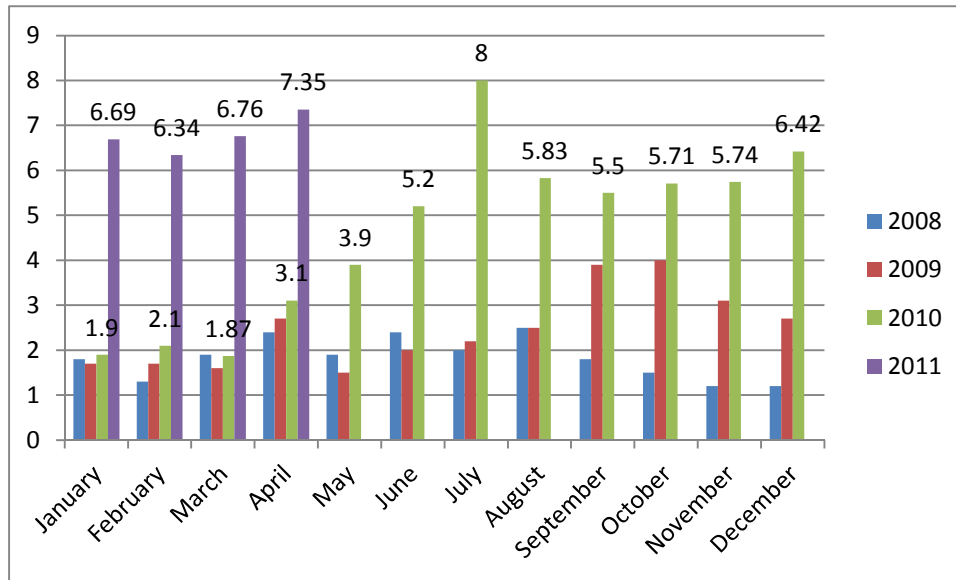
*n=417; data represents a combination of typical adoptions to new families and transfers to partner rescue groups; 13.85% decrease in adoptions over April last year.*

### Euthanasia monthly comparison



*n=417; the euthanasia numbers are 6% higher than this month last year.*

## Volunteer hours by FTE



*n=7.35 FTEs; Volunteers logged enough hours this month to equal 7.35 extra full time employees. This includes dog walking, socialization, off-site events and work promoting animals in the community, just to name a few.*

**Wake County Animal Center  
Statistical Report**

**Date Range: July 1 - April 30**

**Date Prepared:**

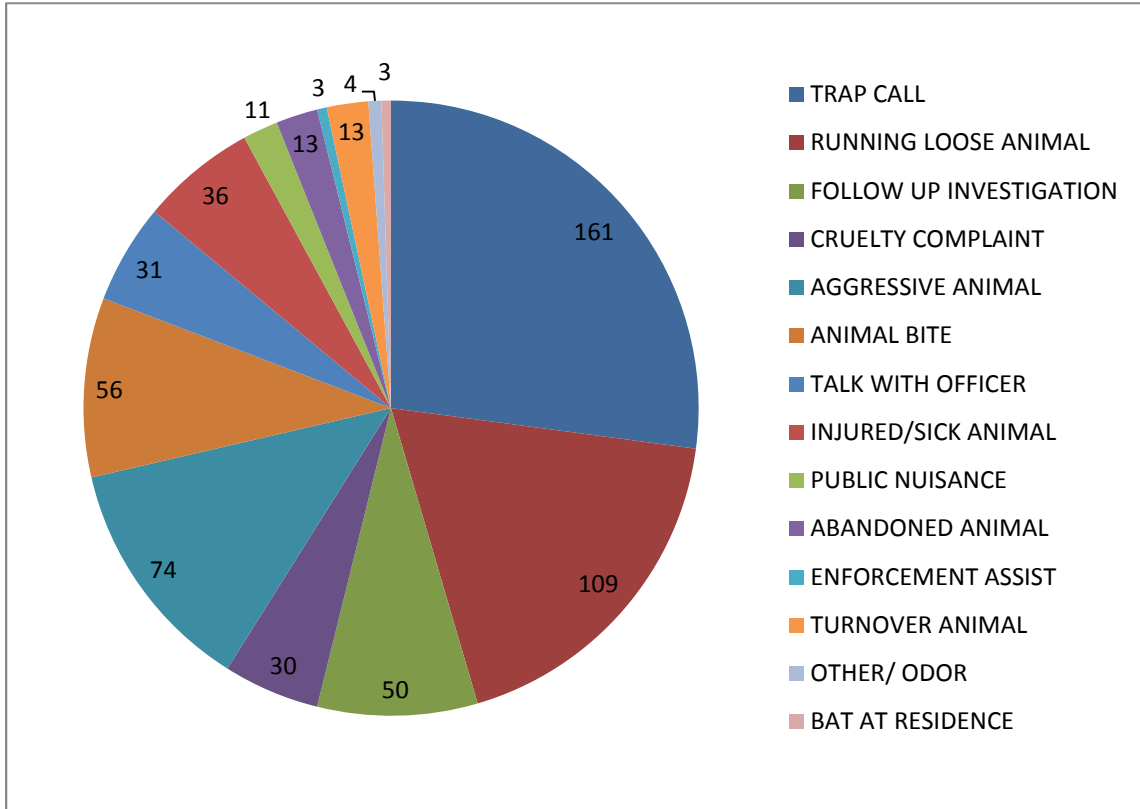
**5/3/2011**

	YTD FY09	Percent	YTD FY10	Percent	YTD FY11	Percent	MTD	Percent
Intake Dog	4353		4489		6357		641	
Intake Cat	4219		4758		5899		518	
Intake Other	330		231		496		60	
<b>Intake Total</b>	<b>8902</b>		<b>9478</b>		<b>12752</b>		<b>1219</b>	
Adoption Dog	1068	25%	1612	36%	2519	39.63%	203	31.67%
Adoption Cat	560	13%	772	16%	1361	23.07%	88	16.99%
Adoption Other	55	17%	106	46%	124	25.00%	20	33.33%
<b>Adoption Total</b>	<b>1683</b>	<b>19%</b>	<b>2490</b>	<b>26%</b>	<b>4004</b>	<b>31.40%</b>	<b>311</b>	<b>25.51%</b>
Transfer Dog	365	8%	629	14%	853	13.42%	66	10.30%
Transfer Cat	121	3%	220	5%	564	9.56%	30	5.79%
Transfer Other	138	42%	41	18%	93	18.75%	10	16.67%
<b>Transfer Total</b>	<b>624</b>	<b>7%</b>	<b>890</b>	<b>9%</b>	<b>1510</b>	<b>11.84%</b>	<b>106</b>	<b>8.70%</b>
Reclaim Dog	565	13%	554	12%	1048	16.49%	146	22.78%
Reclaim Cat	69	2%	73	2%	137	2.32%	20	3.86%
Reclaim Other	3	1%	6	3%	15	3.02%	8	13.33%
<b>Reclaim Total</b>	<b>637</b>	<b>7%</b>	<b>633</b>	<b>7%</b>	<b>1200</b>	<b>9.41%</b>	<b>174</b>	<b>14.27%</b>
Euth Dog	1643	38%	1532	34%	1633	25.69%	180	28.08%
Euth Cat	3333	79%	3601	76%	3593	60.91%	225	43.44%
Euth Other	96	29%	48	21%	201	40.52%	12	20.00%
<b>Euth Total</b>	<b>5072</b>	<b>57%</b>	<b>5181</b>	<b>55%</b>	<b>5427</b>	<b>42.56%</b>	<b>417</b>	<b>34.21%</b>

	Total #	Percentage
Change in intake from FY10 to FY11	3274	35%
Change in adoptions from FY10 to FY11	1514	61%
Change in transfers from FY10 to FY11	620	70%
Change in euthanasia from FY10 to FY11	246	5%
Change in total cat live releases	997	94%
Change in cat live release percentage		13%
Change in total dog live releases	1625	58%
Change in dog live release percentage		7%

**NOTE: A decrease in total numbers or percentage will show a (-) symbol and be in red. Increases will be in blue and will not show a (+) symbol. NOTE: The first three columns show three different fiscal years, using the date range indicated on the top left corner of the report. Each month, we will compare the same date range across the current and past two fiscal years for equal comparison.**

## Animal Control Field Data



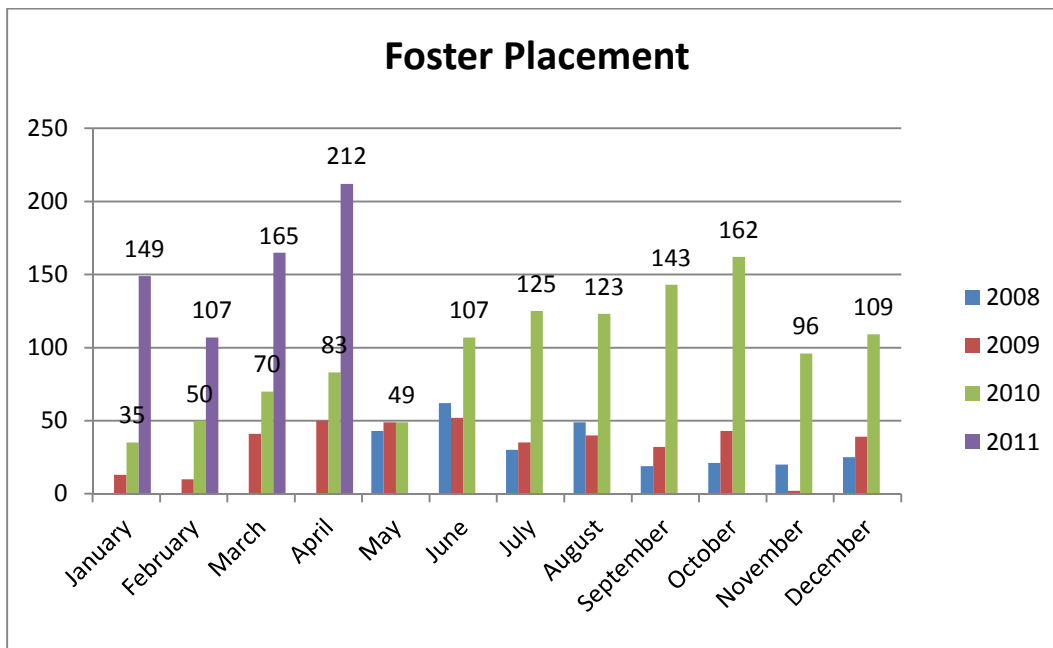
n=600; Wake County Animal Control responded to 600 requests for service in April 2011. Normally, Animal Control sees a decrease in requests for service when the temperatures decrease. Complaints for stray or loose animals continues to contribute to about half of all calls.

## Foster and Rescue Report

During the month of April, one hundred sixty-eight (168) animals were placed into foster care.

During the month of April, one hundred five (105) animals were placed into the care of partnering rescue groups and adoption centers.

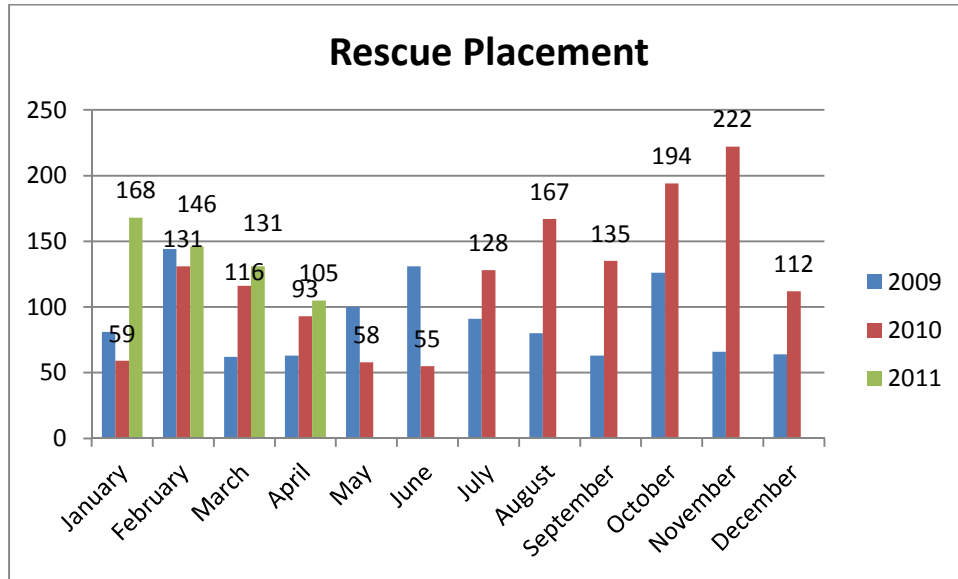
### Year over year comparison: Foster Placement



*n=212; The number of animals placed into foster care during April 2011 is the highest on record. More animals were placed into foster care this month than in any other month since the inception of the program, which speaks to the continued growth and success of the Foster program and highlights the life-saving actions taken by the Center. Additionally, the high number signifies the start of puppy and kitten “season” as the number of litters arriving at the Center or being born while in foster care continues to rise.*

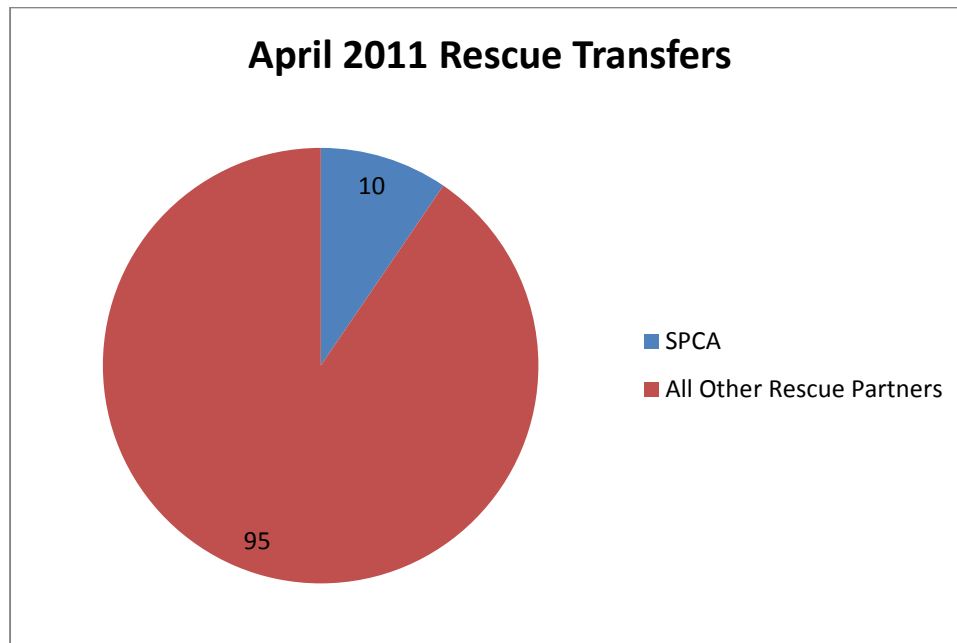


### Year over year comparison: Rescue Placement



*n=105; The Center is experiencing a decrease, month-over-month since January 2011, in the number of animals placed with partnering rescue organizations.*

## Distribution of Rescue Placement



*N=105; WCAC transferred 11 dogs to Hav-A-Hart Pet Rescue and 13 cats to Marley's Cat Tales in the month of April.*

## Top Canine and Feline Transfers

Shelter/Rescues	Dogs Transferred
Hav-A-Hart Pet Rescue	11
Faulkner Animal Rescue and Recovery	8
Fallen Angels Pet Rescue	5
2 Paws Up	4
A New Leash on Life Dog Rescue	3
SPCA of Wake County	2
Carolina Care Bullies	2

Shelters/Rescues	Cats Transferred
Marley's Cat Tales	13
SPCA of Wake County	7
Pet & People Foundation	4
2 Paws Up	1