

Wake County

Animal Care, Control and Adoption

April 2012 Monthly Report



Definitions

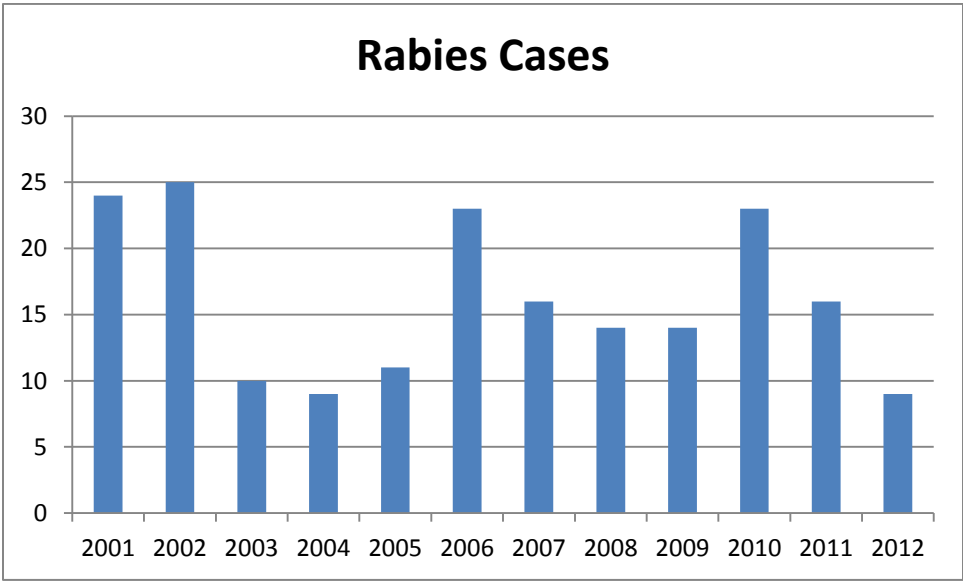
Intake: Animals admitted to the Animal Center. These include animals surrendered by the general public, picked up by Animal Control and animals born at the Center.

Adoption: Includes animals adopted to new homes and transferred to qualifying rescue groups.

Reclaim: Animals reclaimed by their owners after being found as strays or after completing quarantine period.

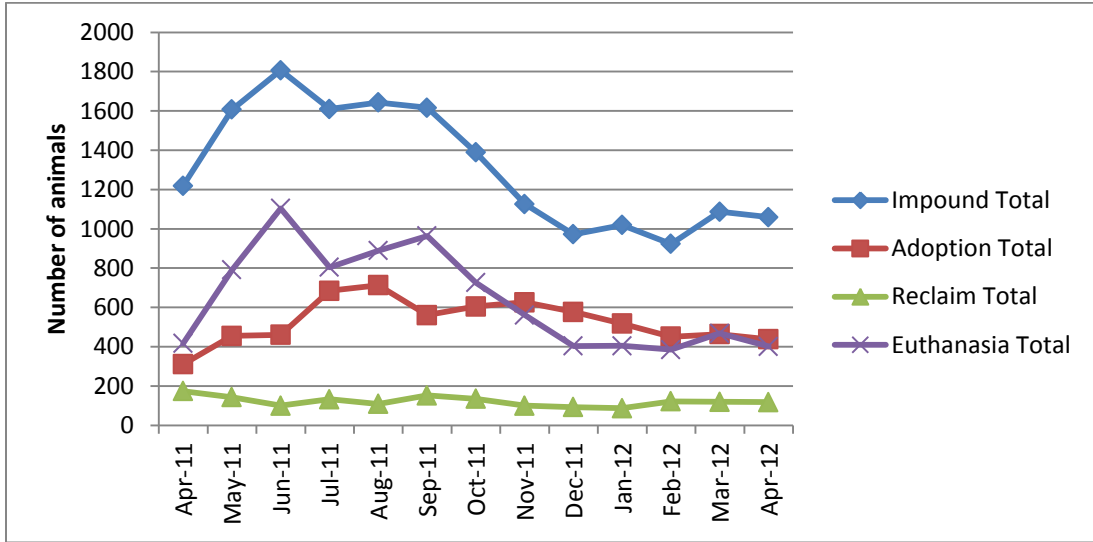
Euthanasia: Animals humanely euthanized at the Center. This includes animals that reside at the Animal Center and animals surrendered by their owner for euthanasia for medical or behavioral reasons.

Rabies: Positive confirmed laboratory cases



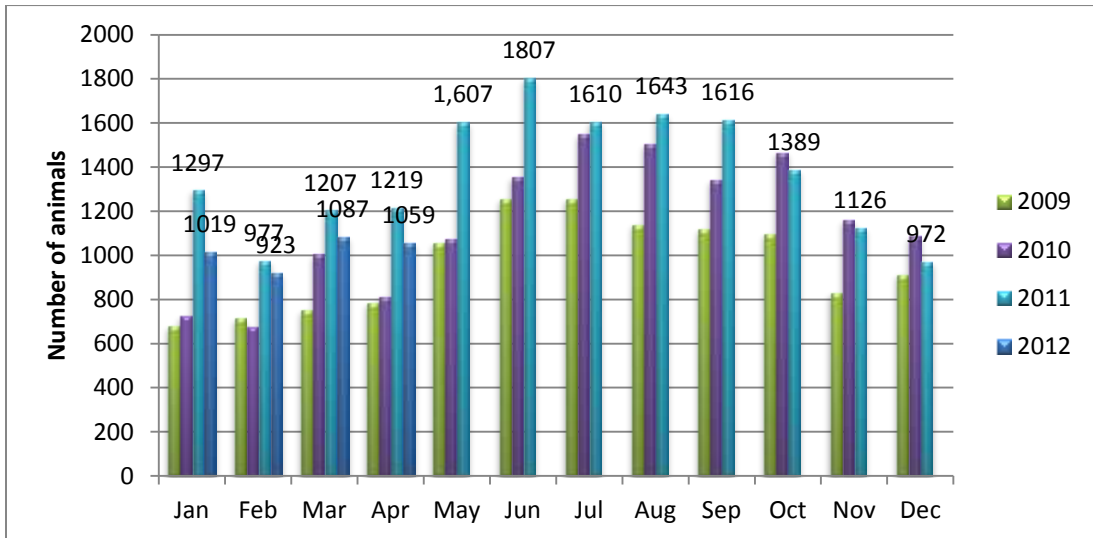
n=9; 0 cases in the month of April 2012; year to date cases=9.

Animal Center Statistical Summary



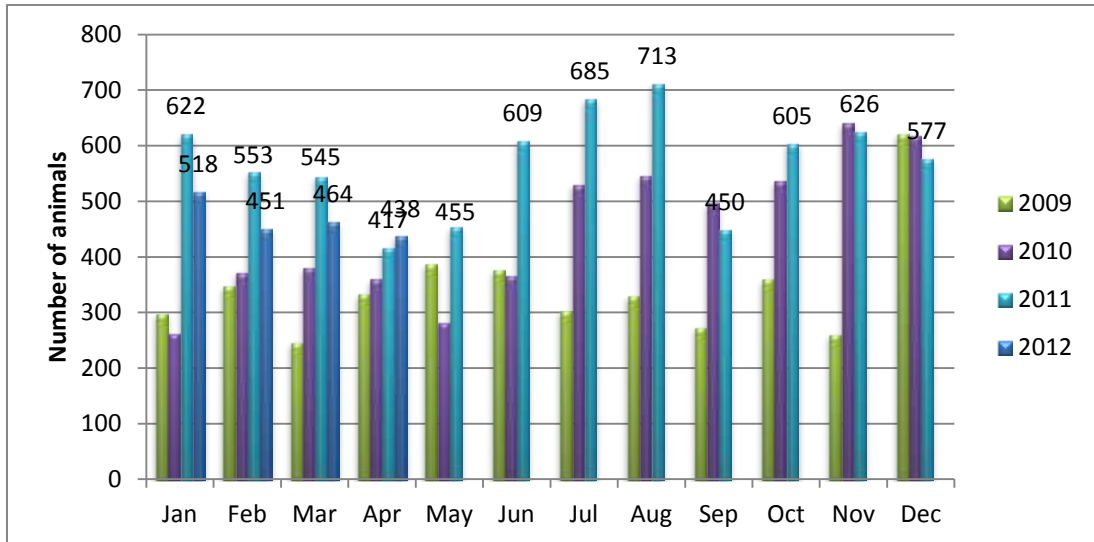
Ebb and Flow of animal intake: As depicted above, animal intake increases significantly in the warm months and drops in the cold months. This is typically associated with an increase in puppy and kitten litters in warm months. Adoptions do not normally increase to match the increase in intake so euthanasia rates can increase with intake.

Animal Center Intake monthly comparison



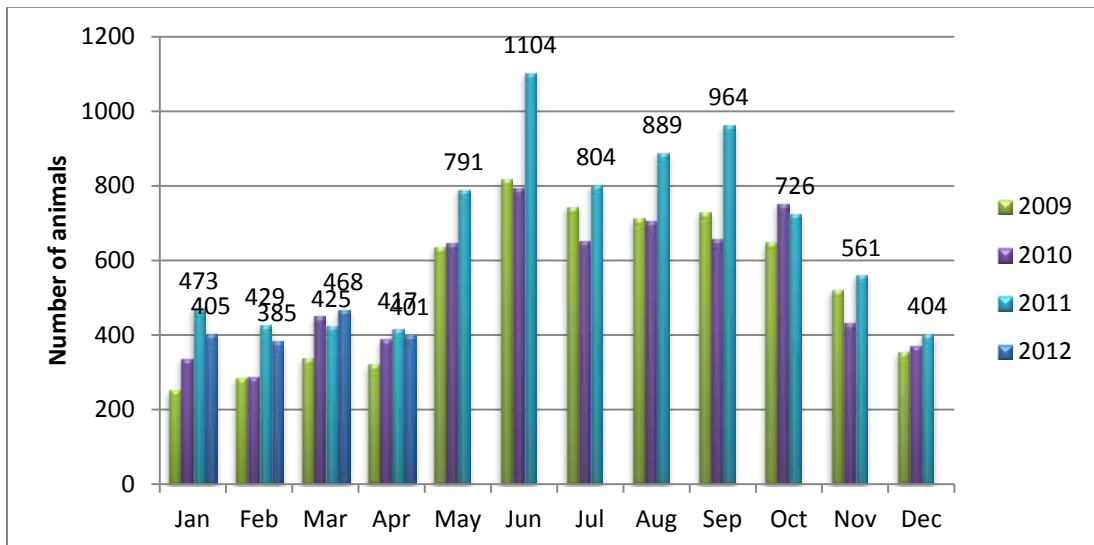
n=1059; Intake is 13% lower than April 2011.

Adoption/Transfer Monthly Comparison



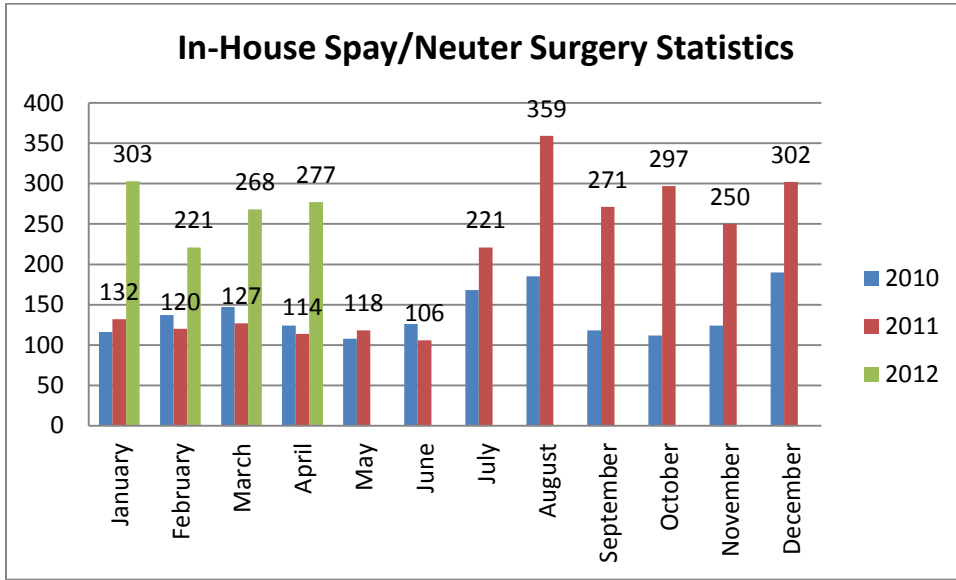
n=438; data represents a combination of typical adoptions to new families and transfers to partner rescue groups; 5% increase in adoptions/transfers over April last year.

Euthanasia monthly comparison



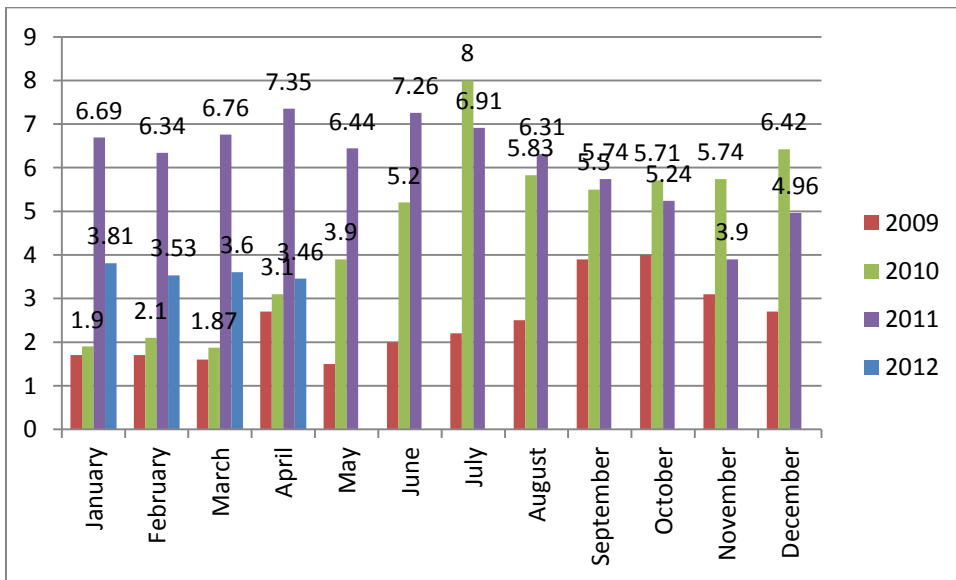
n=401.

Spay/Neuter Surgeries monthly comparison



n=277; spay/neuter surgeries; Two hundred and seventy-seven (277) spay or neuter surgeries were performed during the month of April by the Center's in-house veterinary program

Volunteer hours by FTE



n=3.46 FTEs; Volunteers logged enough hours this month to equal 3.46 extra full time employees. This includes dog walking, socialization, off-site events and work promoting animals in the community, just to name a few.

Wake County Animal Center Statistical Report

Date Range: July 1, 2011 - April 30, 2012

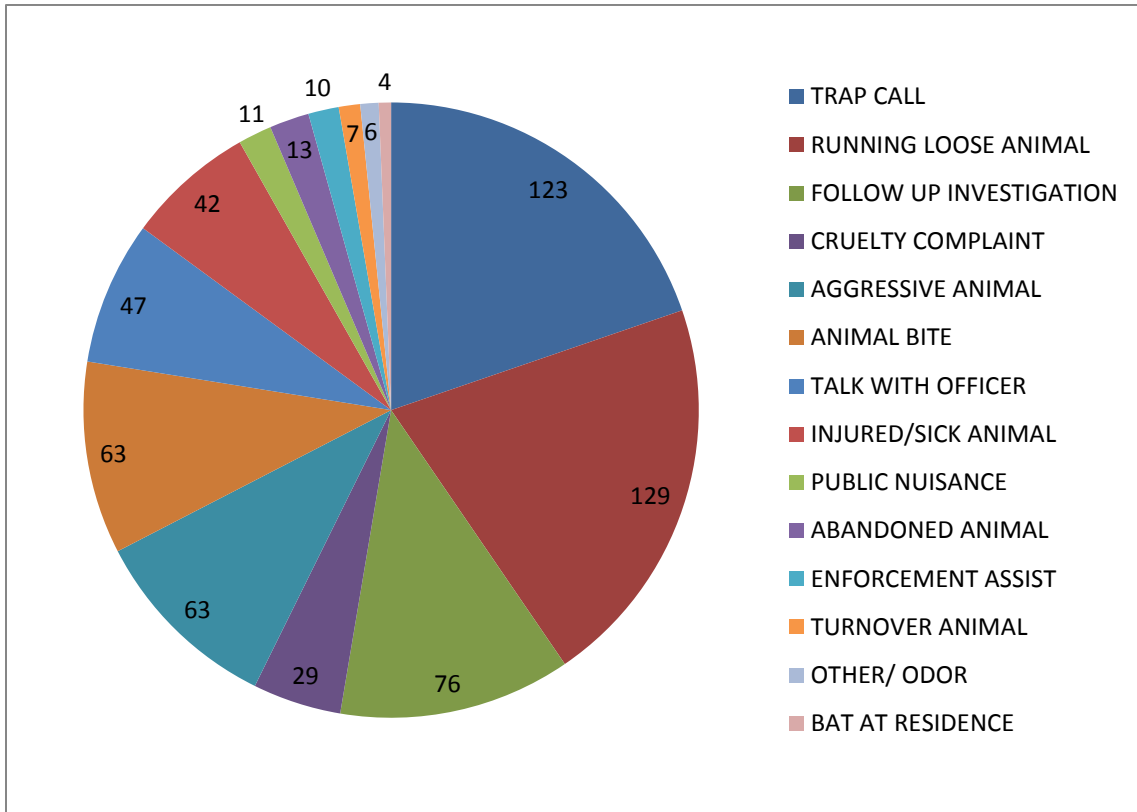
Date Prepared: 05/01/2012

	YTD FY09	%	YTD FY10	%	YTD FY11	%	YTD FY12	%	MTD	%
Intake Dog	4353		4489		6349		6297		604	
Intake Cat	4218		4758		5894		5526		403	
Intake Other	330		231		493		559		52	
Intake Total	8901		9478		12736		12382		1059	
Adoption Dog	1529	35%	1619	36%	2518	40%	2624	41.7%	234	38.7%
Adoption Cat	554	13%	771	16%	1359	23%	1468	26.6%	94	23.3%
Adoption Other	62	21%	110	48%	124	25%	176	31.5%	18	34.6%
Adoption Total	2145	24%	2500	26%	4001	31%	4268	34.5%	346	32.7%
Transfer Dog	365	8%	629	14%	853	13%	698	11.1%	48	7.9%
Transfer Cat	121	3%	220	5%	564	10%	406	7.3%	35	8.7%
Transfer Other	138	42%	41	18%	96	19%	55	9.8%	9	17.3%
Transfer Total	624	7%	890	9%	1513	12%	1159	9.4%	92	8.7%
Reclaim Dog	563	13%	552	12%	1047	16%	1030	16.4%	107	17.7%
Reclaim Cat	69	2%	73	2%	137	2%	134	2.4%	10	2.5%
Reclaim Other	3	1%	6	3%	15	3%	7	1.3%	1	1.9%
Reclaim Total	635	7%	631	7%	1199	9%	1171	9.5%	118	11.1%
Euth Dog	1660	38%	1545	34%	1643	26%	2102	33.4%	179	29.6%
Euth Cat	3345	79%	3615	76%	3610	61%	3674	66.5%	193	47.9%
Euth Other	97	29%	51	22%	208	42%	262	46.9%	29	55.8%
Euth Total	5102	57%	5211	55%	5461	43%	6038	48.8%	401	37.9%

	Total	%
Change in intake from FY11 to FY12	-354	-3%
Change in adoptions from FY11 to FY12	267	7%
Change in transfers from FY11 to FY12	-354	-23%
Change in euthanasia from FY11 to FY12	577	11%
	-	-
Change in total cat live releases	-52	2.5%
	-	-
Change in total dog live releases	-66	1.5%

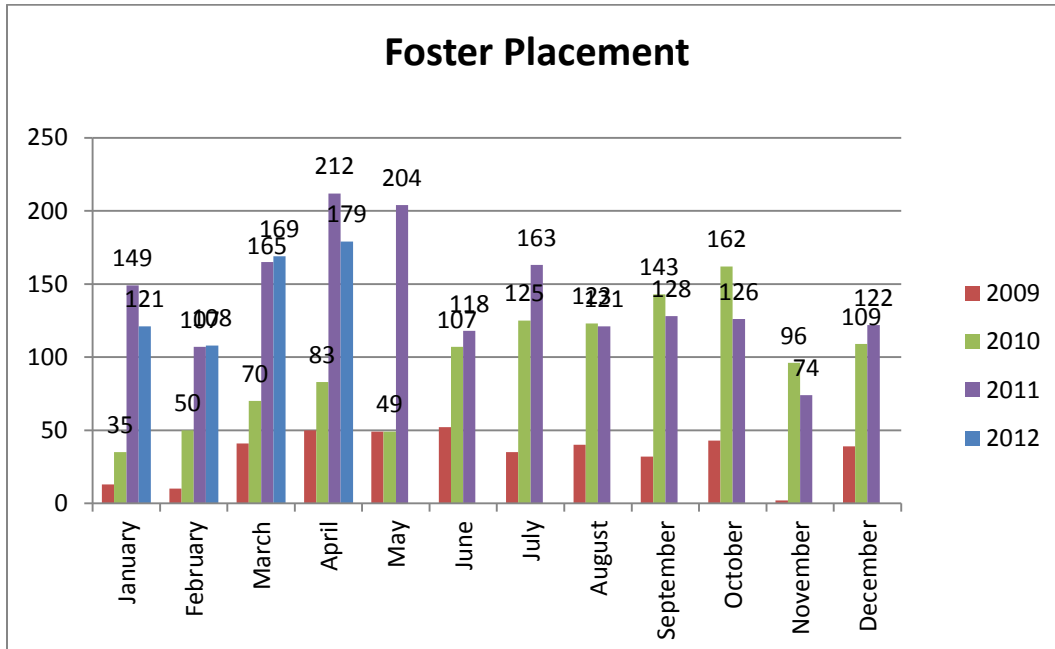
NOTE: A decrease in total numbers or percentage will show a (-) symbol and be in red. Increases will be in blue and will not show a (+) symbol. NOTE: The first three columns show three different fiscal years, using the date range indicated on the top left corner of the report. Each month, we will compare the same date range across the current and past three fiscal years for equal comparison.

Animal Control Field Data



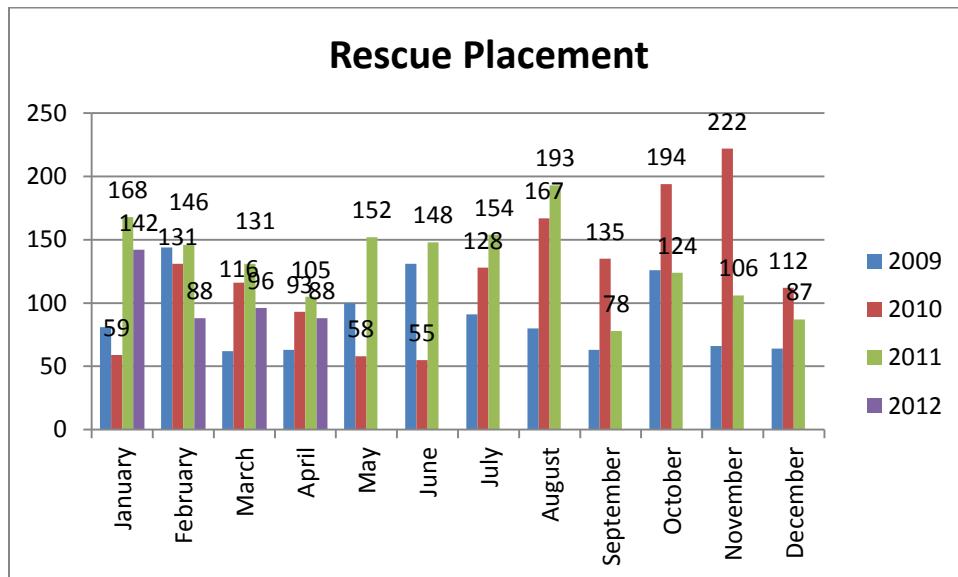
n=639; Wake County Animal Control responded to 639 requests for service in April 2012. Complaints for stray or loose animals continues to contribute to about half of all calls.

Year over year comparison: Foster Placement



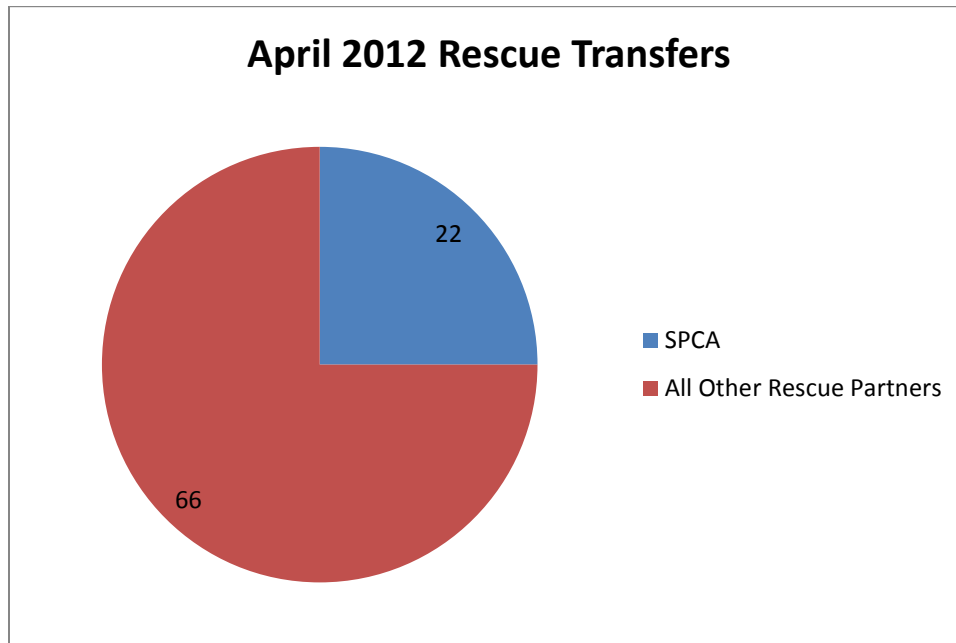
n=179; during the month of April, One hundred seventy-nine (179) animals were placed into foster care.

Year over year comparison: Rescue Placement



n=88; Rescue placement is 16% lower than this month last year. During the month of April, Eighty-eight (88) animals were placed into the care of partnering rescue groups and adoption centers.

Distribution of Rescue Placement



n=88; WCAC transferred 22 animals to the SPCA of Wake County and 66 animals to our other rescue partners.

Top Canine and Feline Transfers

April 2012	Canine
Rescue Ur Forever Friend	14
SPCA of Wake County	7
Sound Pet Animal Rescue & Referral	6
Mitchell Mill Animal Hospital	2
Carolina Poodle Rescue	3
2 Paws Up	2

April 2012	Feline
SPCA of Wake County	15
Marley's Cat Tales	14