

Wake County

Animal Care, Control and Adoption

August 2013 Monthly Report



Definitions

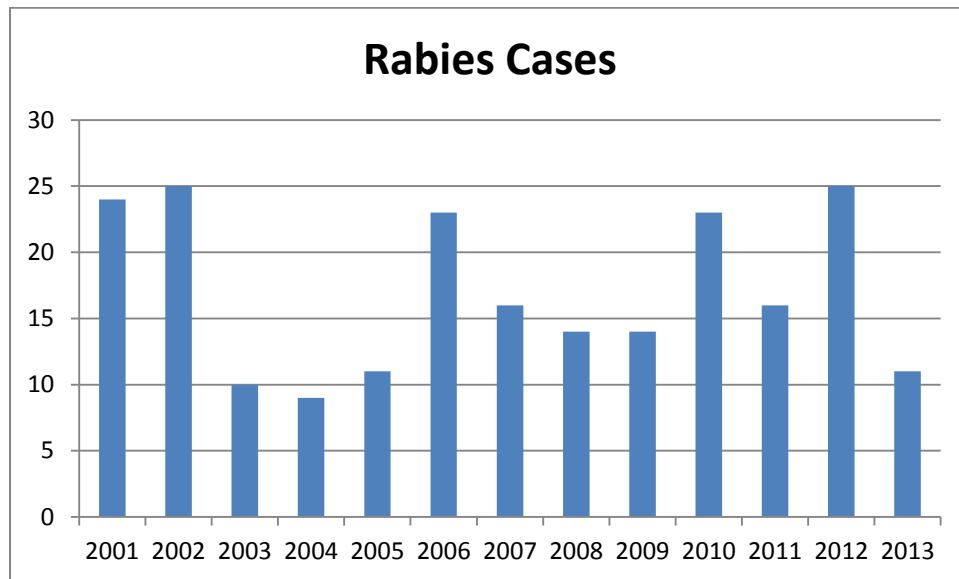
Intake: Animals admitted to the Animal Center. These include animals surrendered by the general public, picked up by Animal Control and animals born at the Center.

Adoption: Includes animals adopted to new homes and transferred to qualifying rescue groups.

Reclaim: Animals reclaimed by their owners after being found as strays or after completing quarantine period.

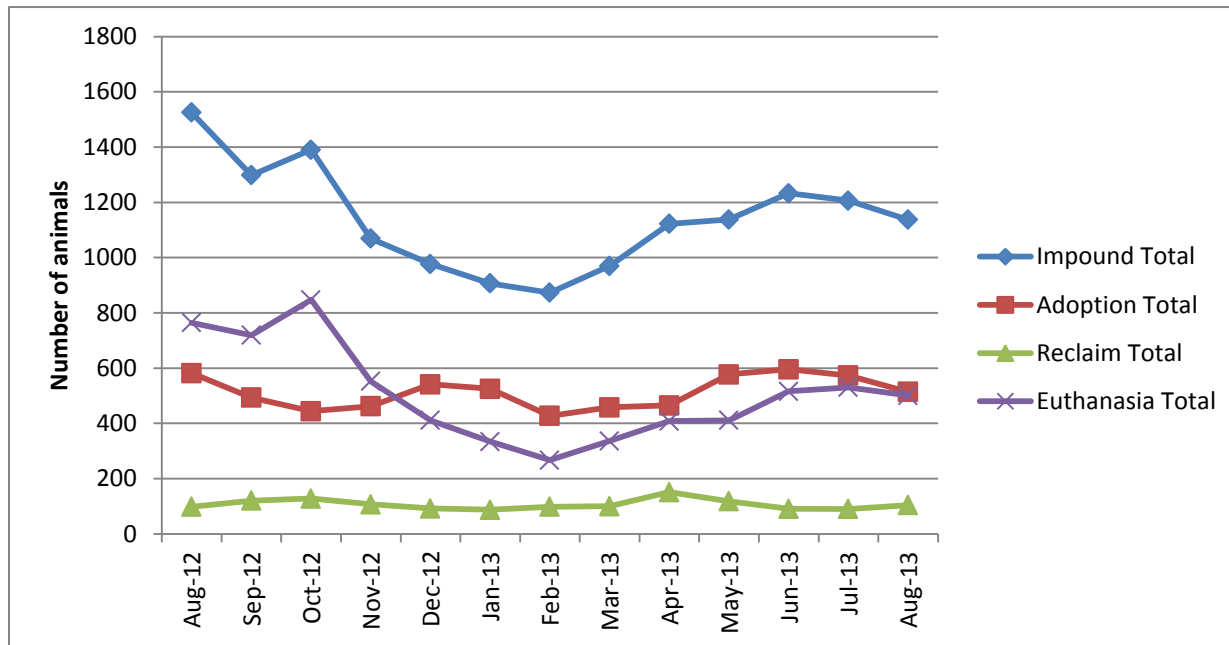
Euthanasia: Animals humanely euthanized at the Center. This includes animals that reside at the Animal Center and animals surrendered by their owner for euthanasia for medical or behavioral reasons.

Rabies: Positive confirmed laboratory cases



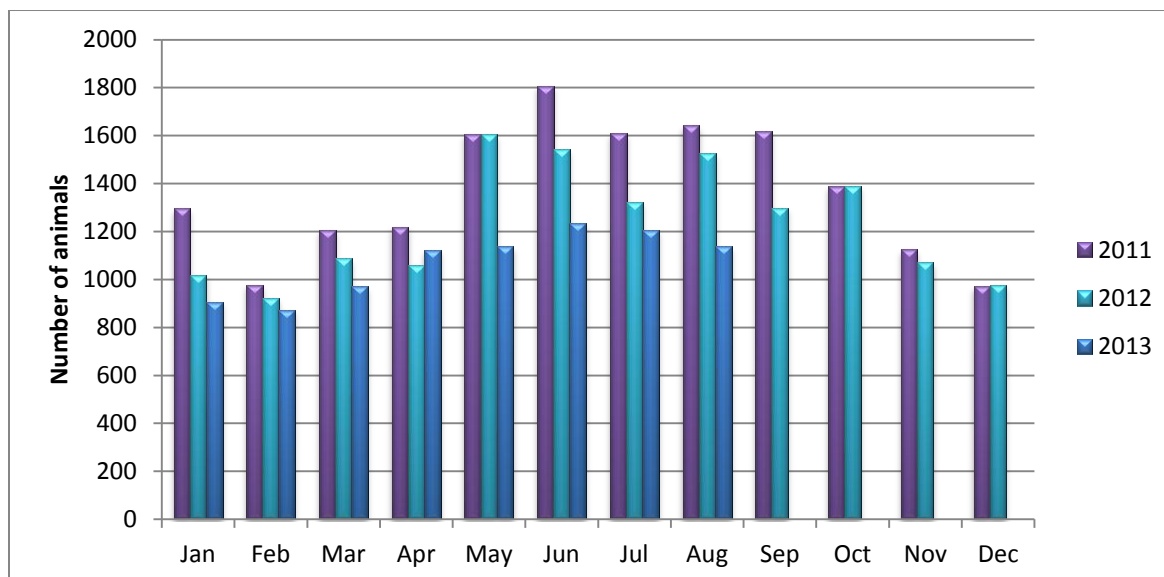
n=2; 2 cases in the month of August 2013; year to date cases= 11.

Animal Center Statistical Summary



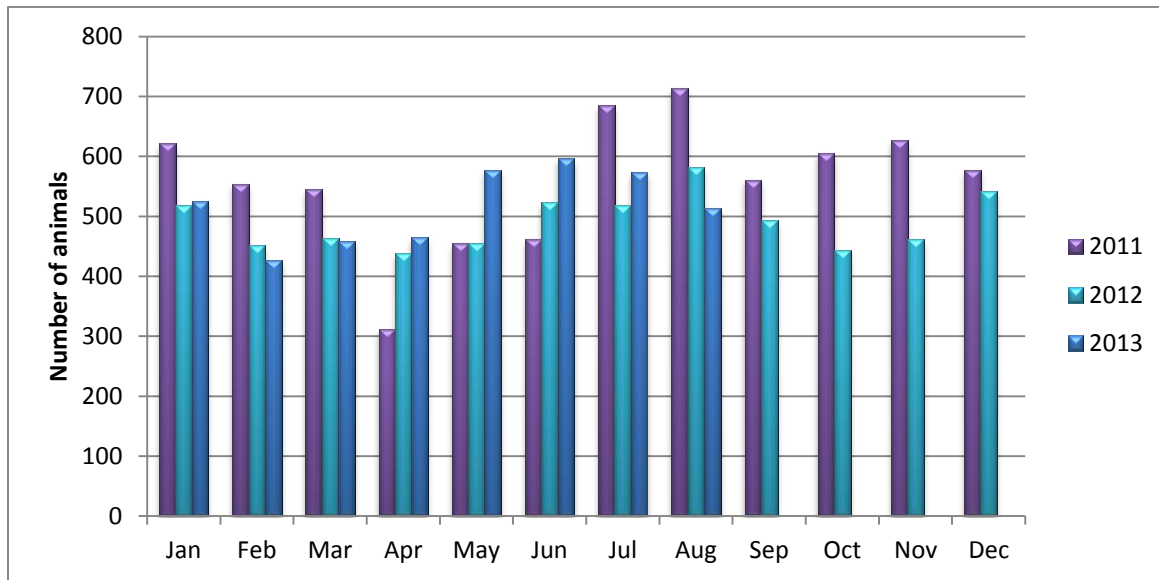
Ebb and Flow of animal intake: As depicted above, animal intake increases significantly in the warm months and drops in the cold months. This is typically associated with an increase in puppy and kitten litters in warm months. Adoptions do not generally increase along with intake, and due to this, euthanasia rates typically coincide with intake increases.

Animal Center Intake Monthly Comparison



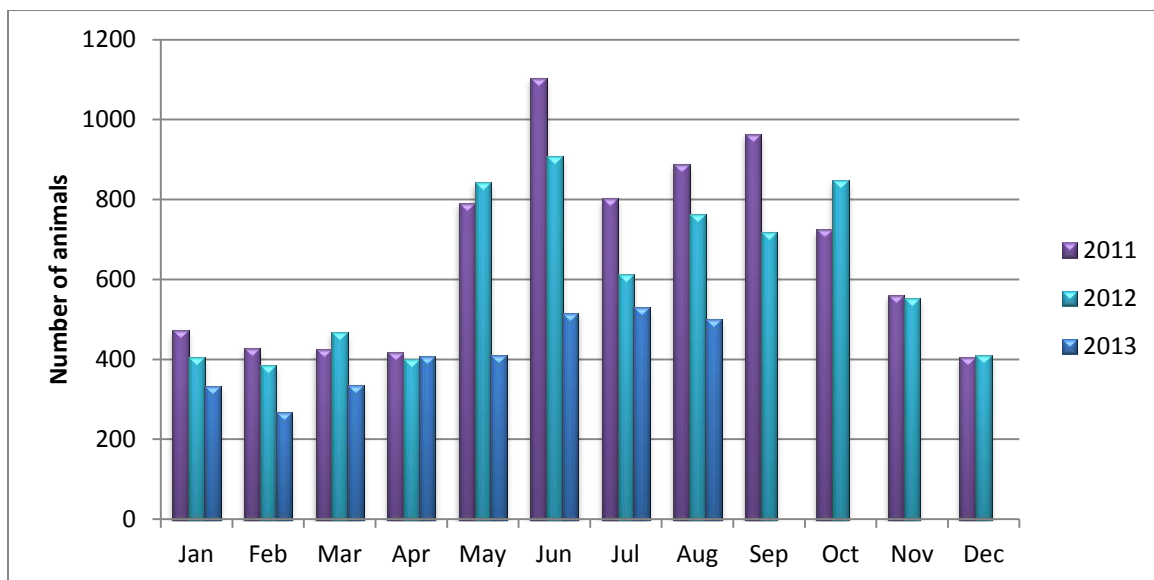
n=1137; Intake decreased 25.4% from August 2012.

Adoption Monthly Comparison



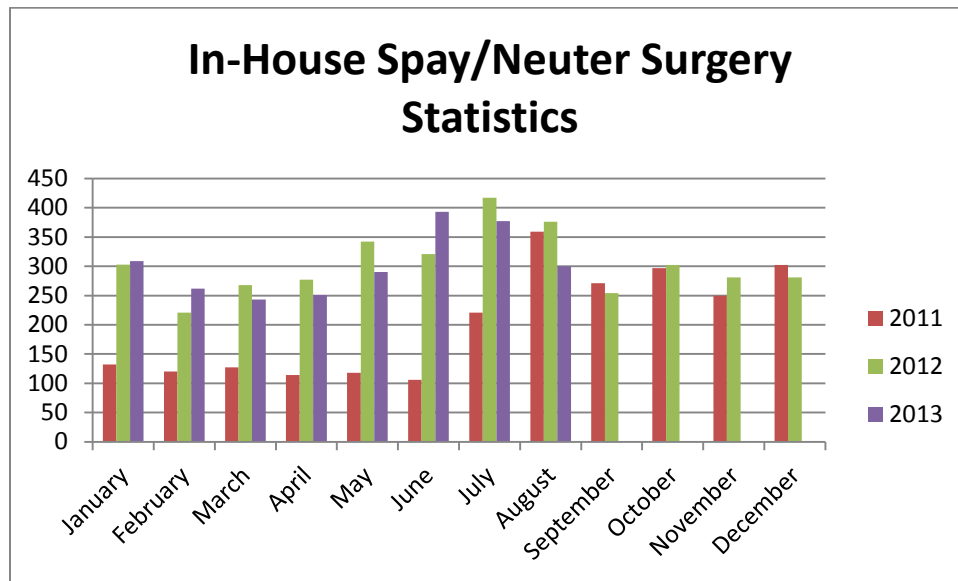
n=514; data represents typical adoptions to new families; number of adoptions decreased 11.7% as compared to August 2012.

Euthanasia monthly comparison



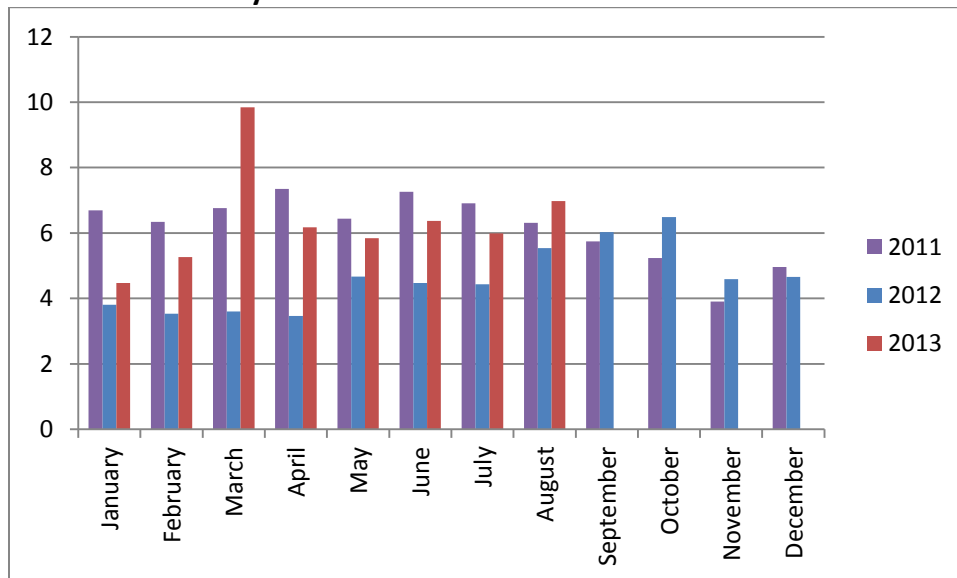
n=501; The number of euthanasia decreased 34.4% from August 2012.

Spay/Neuter Surgeries monthly comparison



n=300; spay/neuter surgeries; Three Hundred spay or neuter surgeries were performed during the month of August by the Center's in-house veterinary program

Volunteer hours by FTE



n=6.98 FTEs; Volunteers logged enough hours during the month of August equal 6.98 extra full time employees. This includes dog walking, socialization, off-site events and work promoting animals in the community, just to name a few.

Wake County Animal Center Statistical Report

Date Range: July 1, 2013 - August 31, 2013

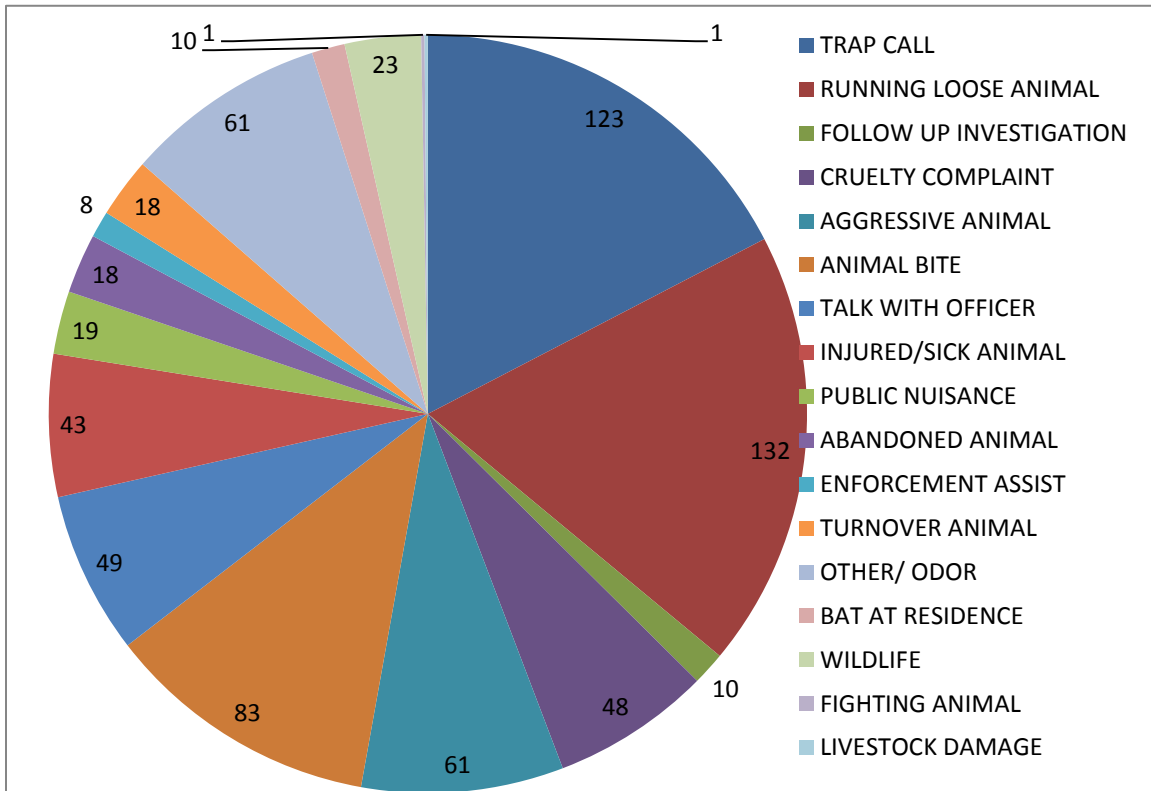
Date Prepared: 9/15/2013

	YTD FY11	%	YTD FY12	%	YTD FY13	%	YTD FY14	%	MTD	%
Intake Dog	1341		1537		1369		1049		499	
Intake Cat	1563		1536		1343		1189		582	
Intake Other	130		156		136		104		56	
Intake Total	3034		3229		2848		2342		1137	
Adoption Dog	508	38%	631	41%	502	36.7%	463	44.1%	212	42.5%
Adoption Cat	248	16%	395	26%	364	27.1%	336	28.3%	141	24.2%
Adoption Other	19	15%	17	11%	21	15.4%	33	31.7%	11	19.6%
Adoption Total	786	26%	1045	32%	894	31.4%	836	35.7%	367	32.3%
Transfer Dog	127	9%	191	12%	135	9.9%	144	13.7%	72	14.4%
Transfer Cat	149	10%	144	9%	37	2.8%	108	9.1%	75	12.9%
Transfer Other	19	15%	12	8%	35	25.7%	3	2.9%	3	5.4%
Transfer Total	295	10%	347	11%	207	7.3%	255	10.9%	150	13.2%
Reclaim Dog	187	14%	221	14%	200	14.6%	176	16.8%	91	18.2%
Reclaim Cat	32	2%	24	2%	16	1.2%	14	1.2%	10	1.7%
Reclaim Other	4	3%	1	1%	2	1.5%	4	3.8%	3	5.4%
Reclaim Total	223	7%	246	8%	218	7.7%	194	8.3%	104	9.1%
Euth Dog	376	28%	600	39%	450	32.9%	295	28.1%	132	26.5%
Euth Cat	981	63%	1015	66%	850	63.3%	676	56.9%	335	57.6%
Euth Other	62	48%	89	57%	76	55.9%	60	57.7%	34	60.7%
Euth Total	1421	47%	1705	53%	1376	48.3%	1031	44.0%	501	44.1%

	Total	%
Change in intake from FY13 to FY14	-506	-16%
Change in adoptions from FY13 to FY14	-58	-6%
Change in transfers from FY13 to FY14	48	14%
Change in euthanasia from FY13 to FY14	-345	-20%
Change in total cat live releases	41	9.8%
Change in total dog live releases	-54	-6.5%

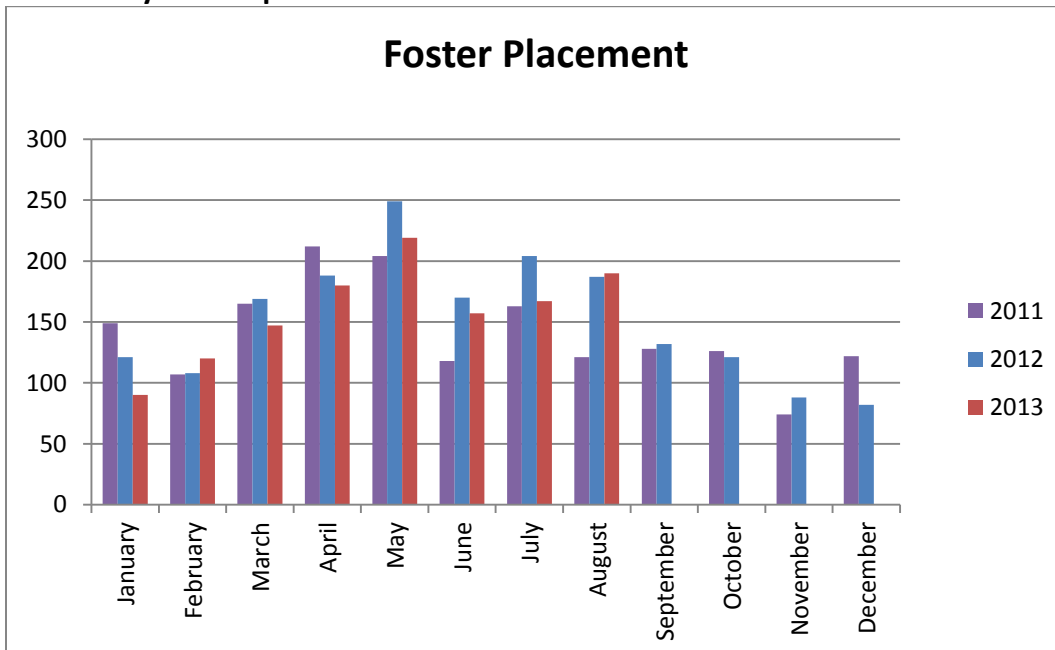
Note: a decrease in total numbers or percentage will show a (-) symbol and be in red. Increases will be in blue and will not show a (+) symbol. Note: The first three columns show three different fiscal years, using the date range indicated on the top left corner of the report. Each month, we will compare the same date range across the current and past three fiscal years for equal comparison.

Animal Control Field Data



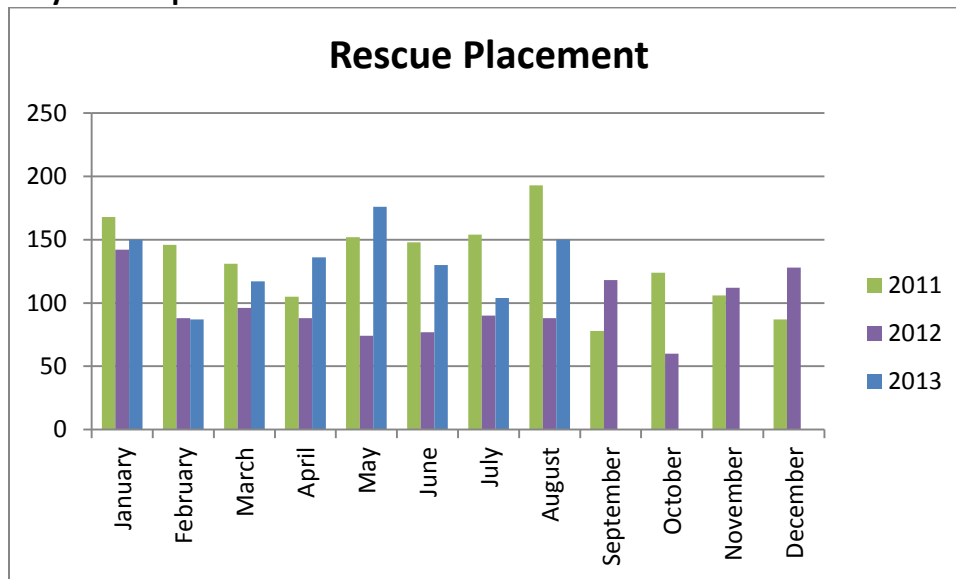
n=708; Wake County Animal Control responded to 708 requests for service in August 2013. Requests for animal traps and complaints for running at large animals were the majority of calls this month.

Year over year comparison: Foster Placement



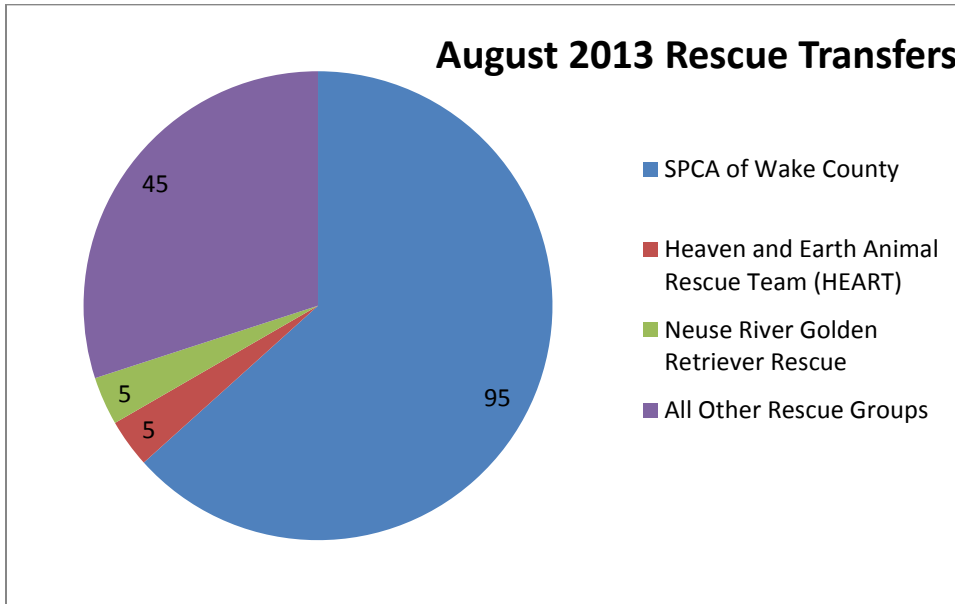
n=190; During the month of August, One Hundred Ninety animals were placed into foster care. Foster placement increased 1.6% from August 2012.

Year over year comparison: Rescue Placement



n=150; Rescue placement is 70.5% higher than August 2012. During the month of August 2013, One Hundred Fifty animals were placed into the care of partnering rescue groups and adoption centers.

Distribution of Rescue Placement



n=150; WCAC transferred 150 animals to our rescue partners during the month of August 2013.

Top Animal Rescue Transfers

August 2013	TOTAL
SPCA of Wake County	45
Heaven and Earth Animal Rescue Team (HEART)	5
Neuse River Golden Retriever Rescue	5