



## Wake County Animal Center

December 2019  
Monthly Report



### Landfill Dogs by Shannon Johnstone

The Wake County Animal Center serves approximately 13,000 - 15,000 animals each year. Through the hard work of our dedicated staff, volunteers, fosters and transfer partners, we continue to improve the lives of the animals in our care.

Please check out our website at [www.wakegov.com/pets](http://www.wakegov.com/pets) for upcoming events, adoption specials and opportunities for you to contribute to the animals in Wake County.

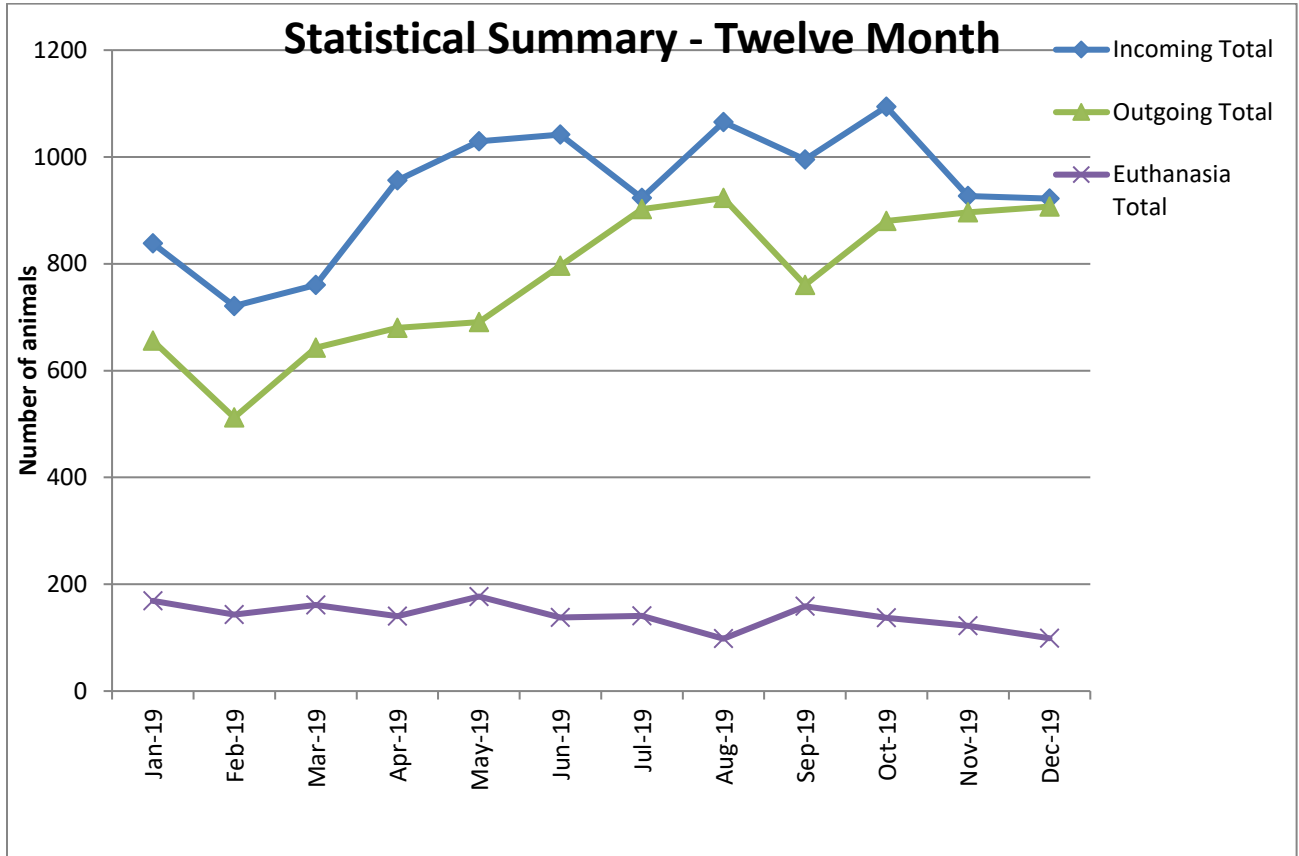
### **Mission Statement**

Determined to make a difference for the animals and citizens of Wake County through education, adoption, enforcement and community partnership.



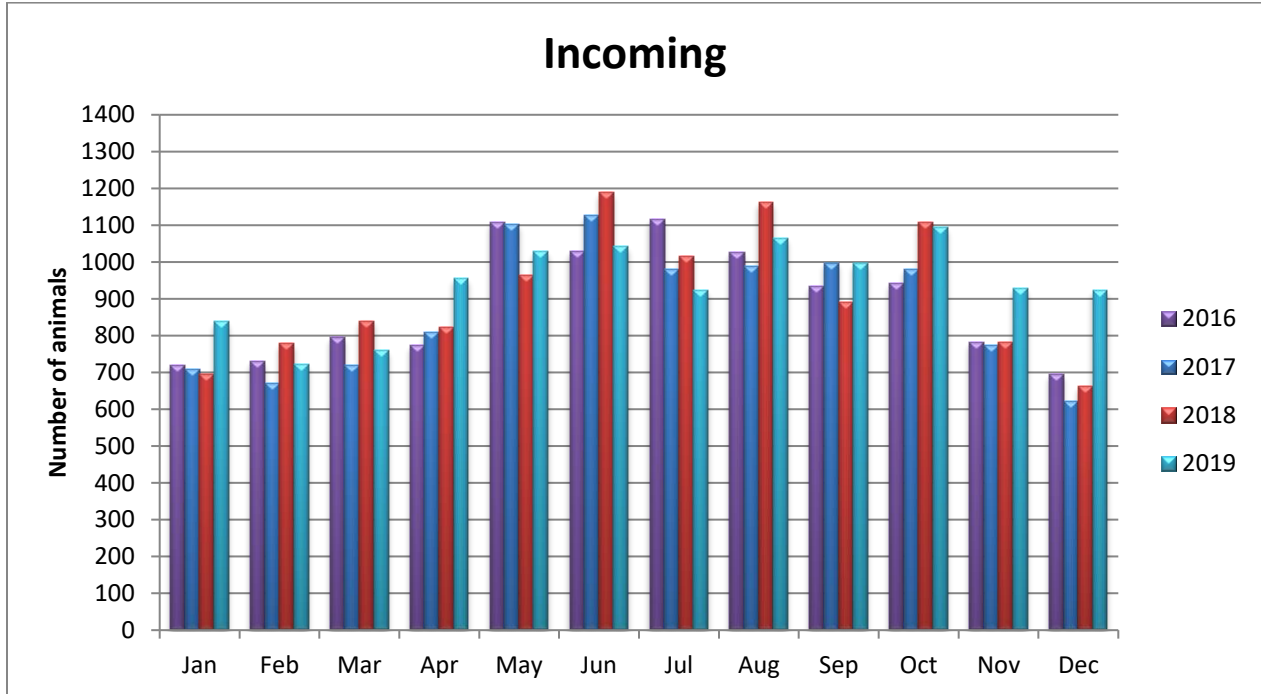
## Animal Center Statistical Summary

This chart compares all of our incoming animals, outgoing animals (which includes adoption, reclaim by owner and transfer to transfer partners) and euthanasia.



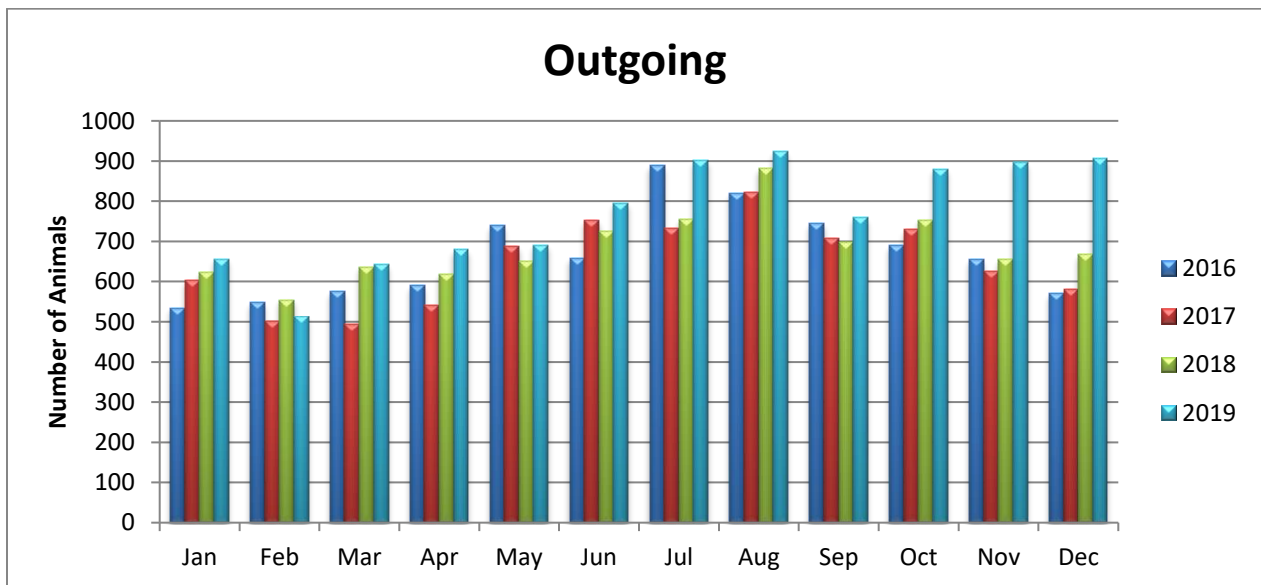
**Incoming Animals Monthly Comparison**

Incoming animals include all animals that enter the Wake County Animal Center either through our front desk or by Animal Control.



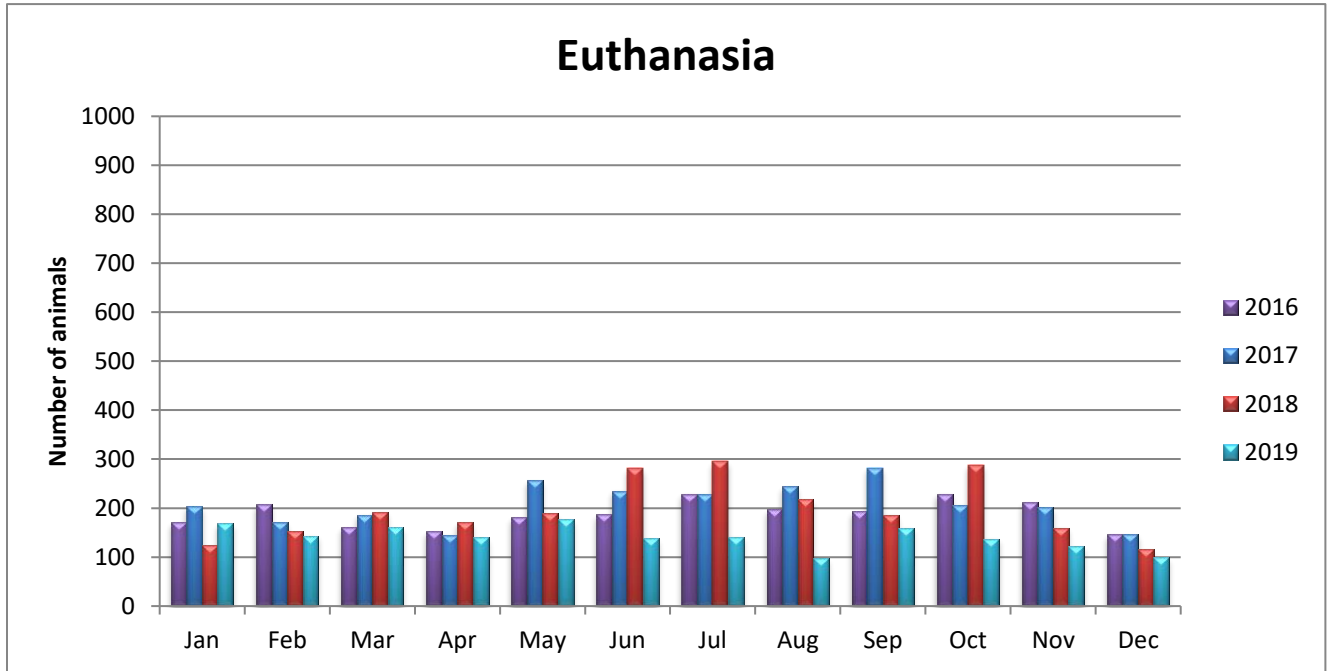
**Outgoing Animals Monthly Comparison**

Outgoing animals include: adoption, reclaim to owner, transfer to transfer partner



## Euthanasia Monthly Comparison

Incoming animals may be euthanized for space, health or temperament. We also provide owner requested euthanasia to the public.



## Wake County Animal Center Statistical Report

This report shows the current report month statistics and compares fiscal year to date statistics for the current fiscal year and the prior three fiscal years.

### Wake County Animal Center Statistical Report

Date Range: July 1, 2019 - December 31, 2019						Date Prepared: 01/15/20				
	YTD FY17	%	YTD FY18	%	YTD FY19	%	YTD FY20	%	MTD FY20	%
Intake Dog	2700		2393		2608		2755		453	
Intake Cat	2557		2746		2673		2862		366	
Intake Other	228		203		344		307		103	
<b>Intake Total</b>	<b>5485</b>		<b>5342</b>		<b>5625</b>		<b>5924</b>		<b>922</b>	
Adoption Dog	1128	41.8%	910	38.0%	971	37.2%	1129	41.0%	206	45.5%
Adoption Cat	1050	41.1%	1193	43.4%	1141	42.7%	1343	46.9%	240	65.6%
Adoption Other	75	32.9%	70	34.5%	112	32.6%	81	26.4%	25	24.3%
<b>Adoption Total</b>	<b>2267</b>	<b>41.3%</b>	<b>2178</b>	<b>40.8%</b>	<b>2228</b>	<b>39.6%</b>	<b>2553</b>	<b>43.1%</b>	<b>471</b>	<b>51.1%</b>
Transfer Dog	567	21.0%	572	23.9%	649	24.9%	724	26.3%	117	25.8%
Transfer Cat	824	32.2%	728	26.5%	688	25.7%	1053	36.8%	129	35.2%
Transfer Other	71	31.1%	74	36.5%	143	41.6%	153	49.8%	64	62.1%
<b>Transfer Total</b>	<b>1462</b>	<b>26.7%</b>	<b>1374</b>	<b>25.7%</b>	<b>1510</b>	<b>26.8%</b>	<b>1930</b>	<b>32.6%</b>	<b>310</b>	<b>33.6%</b>
Reclaim Dog	562	20.8%	562	23.5%	572	21.9%	648	23.5%	101	22.3%
Reclaim Cat	88	3.4%	73	2.7%	159	5.9%	151	5.3%	25	6.8%
Reclaim Other	2	0.9%	14	6.9%	5	1.5%	5	1.6%	0	0.0%
<b>Reclaim Total</b>	<b>652</b>	<b>11.9%</b>	<b>649</b>	<b>12.1%</b>	<b>672</b>	<b>11.9%</b>	<b>774</b>	<b>13.1%</b>	<b>126</b>	<b>13.7%</b>
Euth Dog	444	16.4%	349	14.6%	371	14.2%	253	9.2%	42	9.3%
Euth Cat	709	27.7%	926	33.7%	832	31.1%	451	15.8%	48	13.1%
Euth Other	55	24.1%	36	17.7%	65	18.9%	51	16.6%	9	8.7%
<b>Euth Total</b>	<b>1208</b>	<b>22.0%</b>	<b>1311</b>	<b>24.5%</b>	<b>1269</b>	<b>22.6%</b>	<b>755</b>	<b>12.7%</b>	<b>99</b>	<b>10.7%</b>

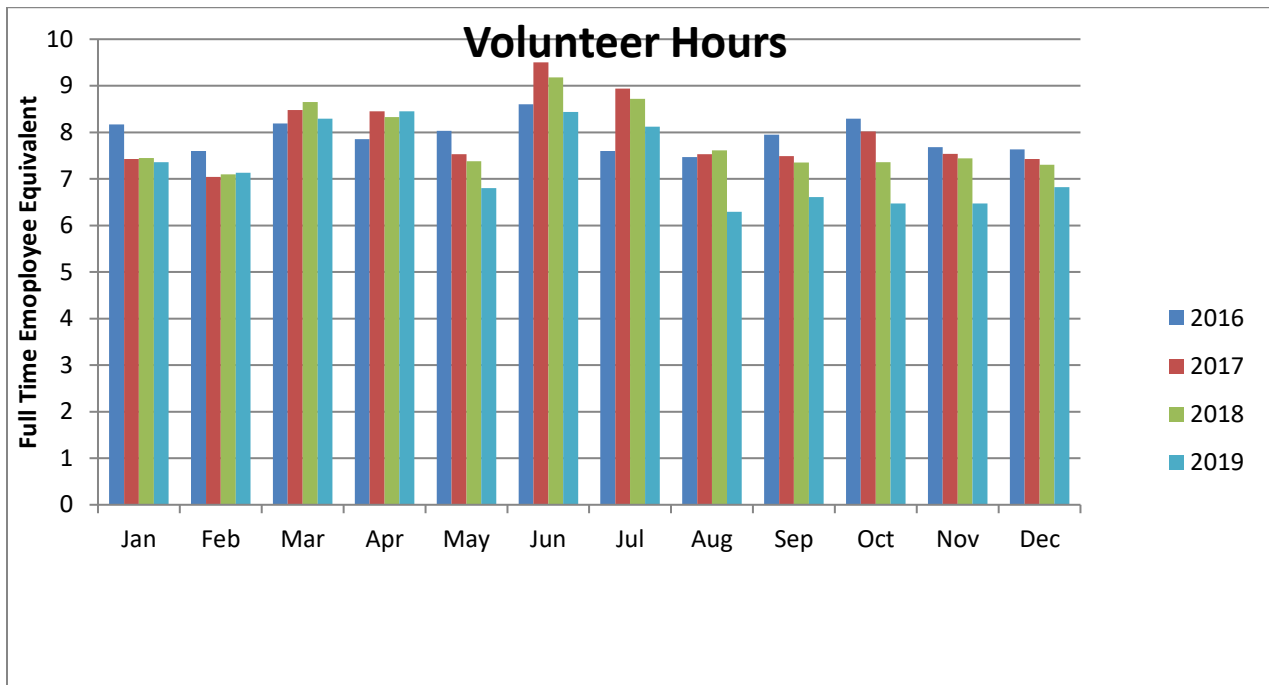
	<b>Total</b>	<b>%</b>
Change in intake from FY19 to FY20	<b>299</b>	<b>5%</b>
Change in adoptions from FY19 to FY20	<b>325</b>	<b>15%</b>
Change in transfers from FY19 to FY20	<b>420</b>	<b>28%</b>
Change in euthanasia from FY19 to FY20	<b>-514</b>	<b>-41%</b>
Change in total cat live releases FY19 to FY20	<b>559</b>	<b>28.1%</b>
Change in total dog live releases FY19 to FY20	<b>309</b>	<b>14.1%</b>

## Wake County Animal Center Volunteer Program

Volunteers are an integral part of the Enrichment Program for the Wake County Animal Center. Their roles include dog walking, socialization of the animals, assisting at off-site events, cat cuddling and promoting our animals in the community, to just name a few.

To learn more about volunteering at the Wake County Animal Center, please visit our Volunteer Page on our website at: <http://www.wakegov.com/pets/volunteer>

Not everyone can come to the Animal Center to interact with our animals directly. If this is you, you can support our Animal Center by raising community awareness of the animals for adoption at the Wake County Animal Center, collecting donations of treats from your local community or making financial donations to support our Enrichment Program, advanced medical care and other needs of the animals in our care. More information can be found at: <http://www.wakegov.com/pets/donations>

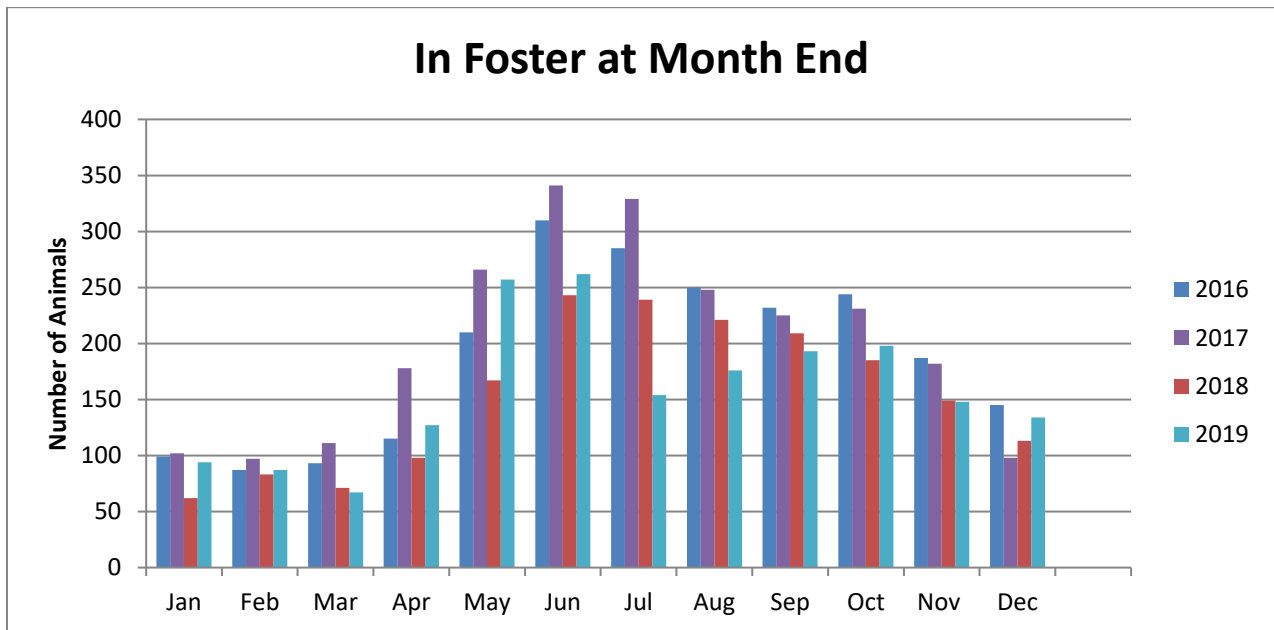


During the month of December, 2019, our volunteers logged a total amount of hours equivalent to an additional 6.82 full time employees. WOW! That's a lot of enrichment for our animals!

## Wake County Animal Center Foster Program

Foster parents are crucial to the lifesaving efforts of the Wake County Animal Center. Foster parents save two lives when they choose to foster – the foster they welcome into their home as well as the pet who just got that spot in our facility. Fosters take on our neediest animals – our bottle feeder kittens, pets that need a kind hand for socialization, as well as our animals that need ongoing medical care. Foster parents provide a loving home that enables these pets to find their forever home.

To learn more about becoming a Foster parent at the Wake County Animal Center, please visit our Foster Page on our website at: <http://www.wakegov.com/pets/foster>



At the end of December, 2019, there were 134 animals in foster care. Animals in foster care that are available for adoption can be found on our Adoption Gallery at: <http://www.wakegov.com/pets/adoptions>

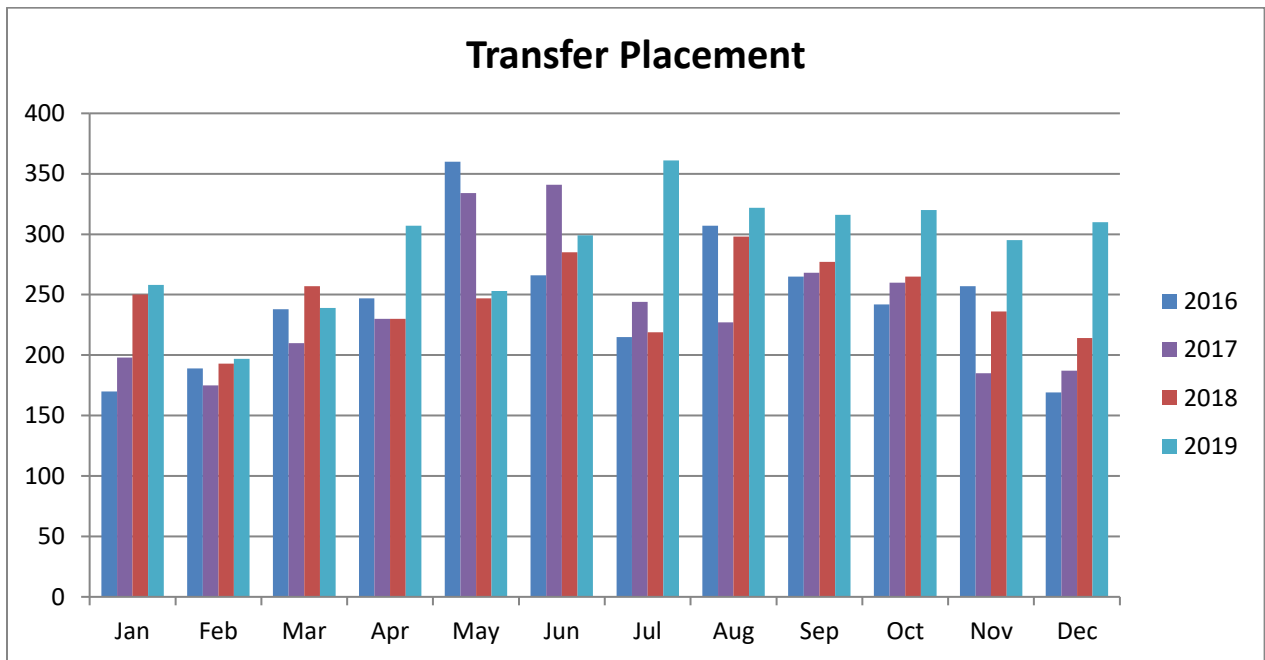


## Wake County Animal Center Transfer Program

Transfer Partners pull animals from the Wake County Animal Center into their rescue programs. Our Transfer Partners are both near and far. We are fortunate to have many Transfer Partners to help us with placement of our animals, some that need extensive socialization, training or medical care. They enable us to save more lives.

To learn more about becoming a Transfer Partner for the Wake County Animal Center, please visit Transfer Program Page on our website at:

<http://www.wakegov.com/pets/transfer>



During December, 2019, 310 animals were transferred out of the Wake County Animal Center to our Transfer Partners.

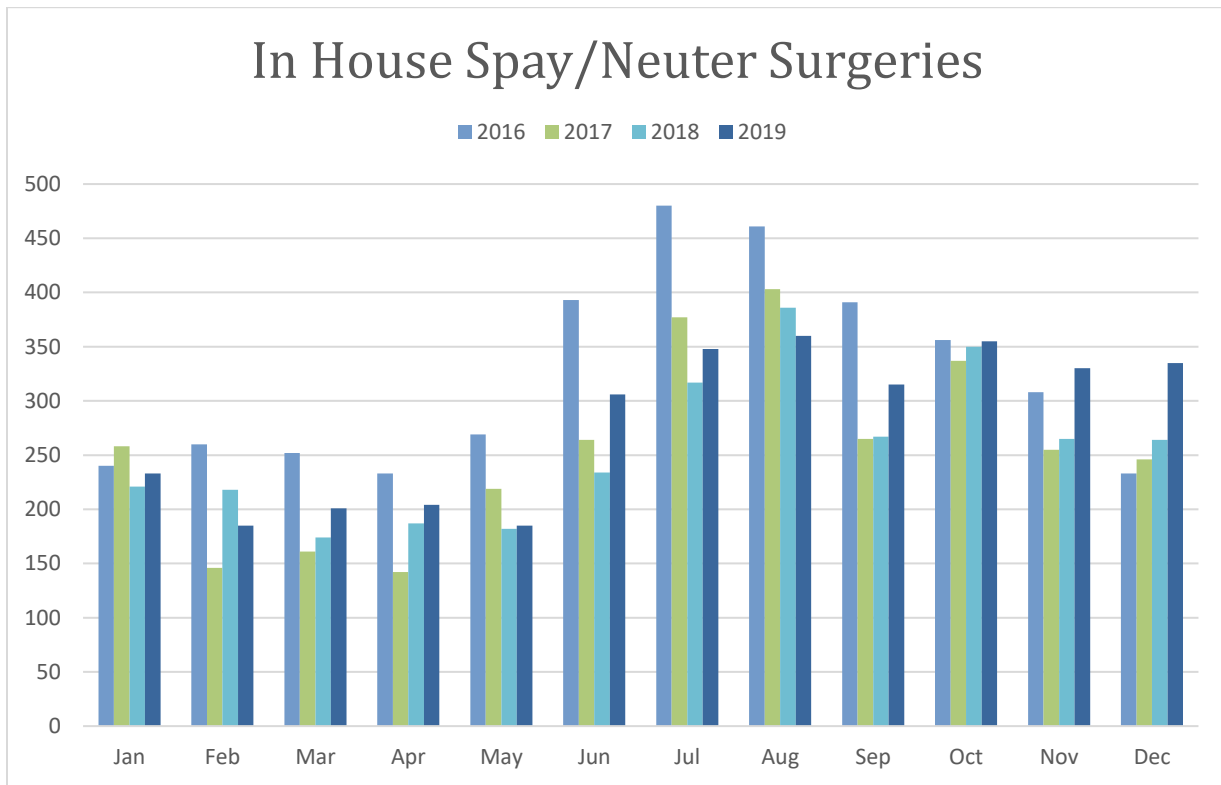
Thank you to all of our Transfer Partners that pulled animals from the Wake County Animal Center in December, 2019. Every single transfer is important!

<b>Shelter Rescue</b>	<b>Cat</b>	<b>Dog</b>	<b>Kitten</b>	<b>Puppy</b>	<b>Other</b>
* 2 Paws Up	1	1	1	-	-
* All Breed Animal Rescue of the Carolinas	-	3	-	1	-
* Alley Cats and Angels	-	-	10	-	-
* Best Friend Pet Adoption	-	1	-	-	-
* Bluegrass Doberman Rescue	-	1	-	-	-
* Bullies 2 The Rescue	-	3	-	-	-
* Carolina Animal Rescue & Adoption	-	2	-	-	-
* Carolina Boxer Rescue, Inc.	-	1	-	-	-
* Cause For PAWS Of NC	-	-	-	2	-
* CCSB Reptile Rescue and Relocation of the Piedmont	-	-	-	-	38
* Chasin Tails Rescue Inc	-	1	-	-	-
* Crisis Dogs NC Rescue	-	1	-	-	-
* Dog Warriors Rescue	1	4	-	-	-
* Doxie By Proxy Inc.	-	4	-	-	-
* Franklin County Humane Society	4	-	1	-	-
* Freedom Ride Rescue	-	3	-	1	-
* Furever Friends Animal Rescue Network	1	-	-	-	-
* Furry Animals Being Saved Rescue Inc.	2	-	-	-	-
* Hope Animal Rescue	-	1	-	-	-
* Jesse's Place/Ruf Creek Ranch Franicola	-	3	-	3	-
* Johnston County Animal Protection League	-	3	-	-	-
* Lake Norman Humane	-	10	4	8	-
* Meow House Cat Rescue	1	-	-	-	-
* Mitchell Mill Animal Hospital	-	11	-	-	2
* Mr Mo Project Senior Dog Rescue	-	1	-	-	-
* NC Yorkie Rescue, Inc.	-	1	-	-	-
* Neshama Animal Rescue Inc.	-	6	2	-	-
* Neuse River Golden Retriever Rescue	-	2	-	-	-
* Paw Project Community Outreach	-	1	-	-	-
* Pawfectmatch	-	1	-	-	-
* Purr Partners	1	-	4	-	-
* Rakki-Inu Akita Rescue	-	1	-	-	-
* SAFE Haven for Cats	17	-	6	-	-
* Saving Grace Animals For Adoption	-	3	-	2	-
* Second Chance Pet Adoptions	8	2	-	-	-
* Southeast German Shepherd Rescue	-	2	-	-	-
* SPCA of Wake County	19	22	5	2	22
* ST. Furever Freedom Animal Rescue	-	1	-	-	-
* TNR Wake	2	-	-	-	-
* Underdog Ranch Pet Adoptions	-	1	-	-	2
* Unspoken Loving Animal Rescue	39	-	-	-	-
* Whippet Rescue and Placement (WRAP)	-	1	-	-	-

## Wake County Animal Center Veterinary Program

Our Veterinary Program consists of a Chief Veterinarian, a Contract Surgeon and four veterinary technicians. This team is responsible for the overall medical care of all animals within the Wake County Animal Center.

Pet overpopulation is a major issue. One way to address this issue is to have your pets spayed or neutered. All dogs and cats adopted from the Wake County Animal Center are spayed or neutered prior to entering their new homes.



During December, 2019, 335 spay/neuter surgeries were performed at the Wake County Animal Center.

## **Wake County Animal Control**

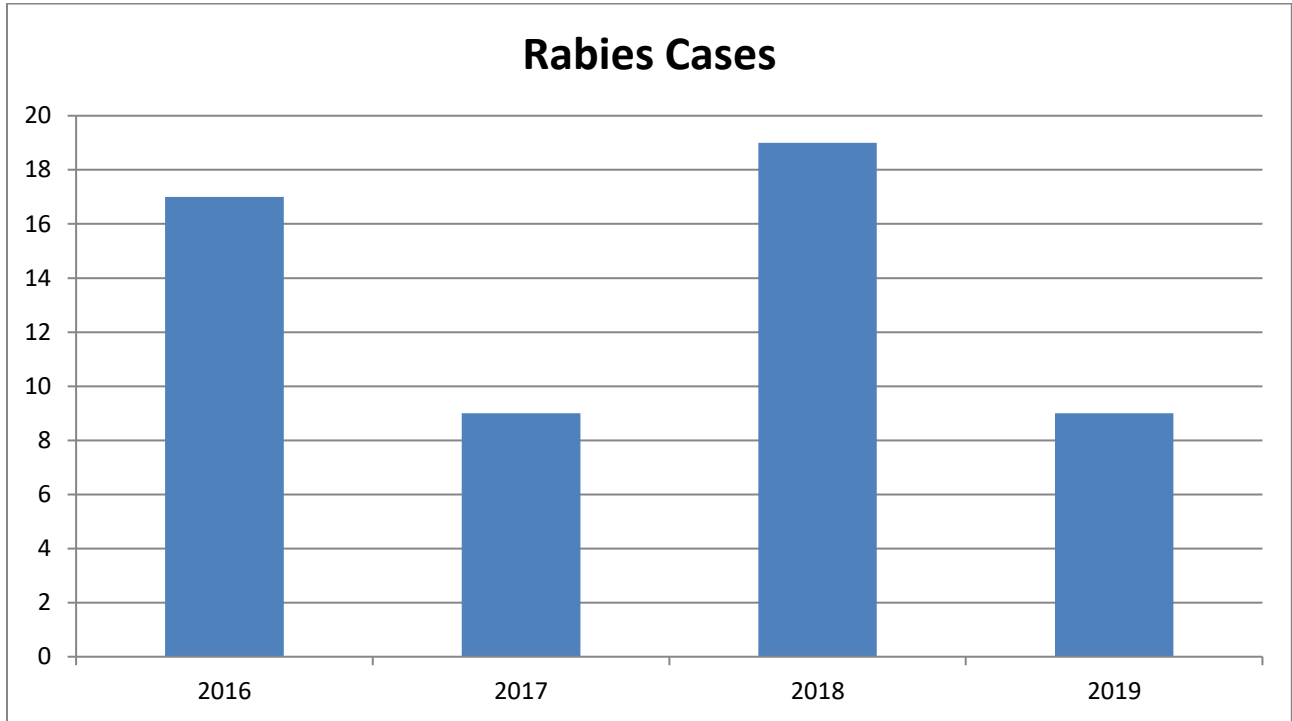
Wake County Animal Control responds to all areas of Wake County except for the City of Raleigh, City of Garner, Town of Holly Springs and Town of Cary, which each have their own Animal Control Units.

To learn more about Animal Control services within Wake County, please visit our Animal Control Page on our website at:

<http://www.wakegov.com/pets/health/Pages/animalcontrol.aspx>

\*Monthly request for service data for Wake County Animal Control in December, 2019 is currently unavailable.

**Wake County Rabies Statistics**



During December 2019, there were 0 confirmed cases of rabies in Wake County. There have been a total of 9 confirmed cases of rabies in Wake County since January 1, 2019.