



## Definitions

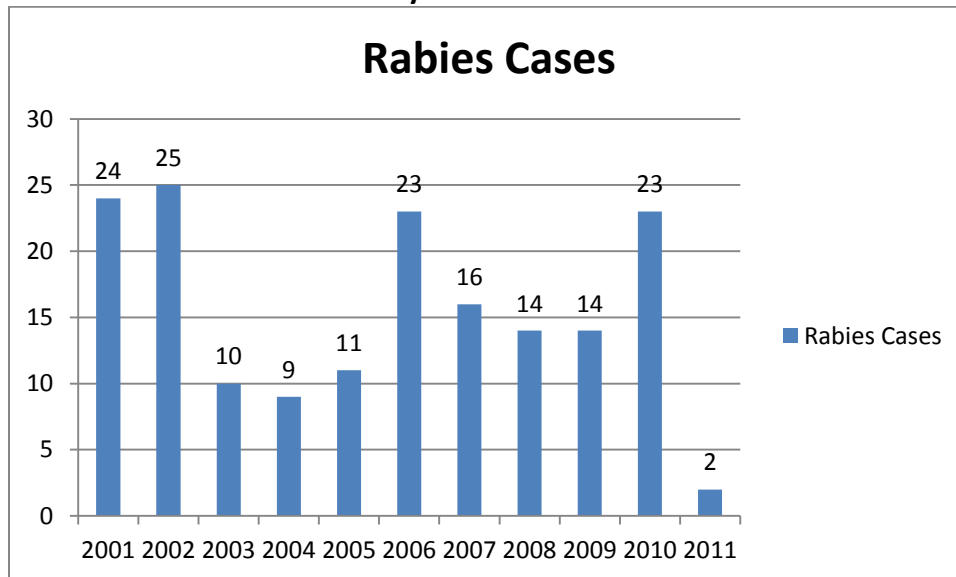
*Intake:* Animals admitted to the Animal Center. These include animals surrendered by the general public, picked up by Animal Control and animals born at the Center.

*Adoption:* Includes animals adopted to new homes and transferred to qualifying rescue groups.

*Reclaim:* Animals reclaimed by their owners after being found as strays or after completing quarantine period.

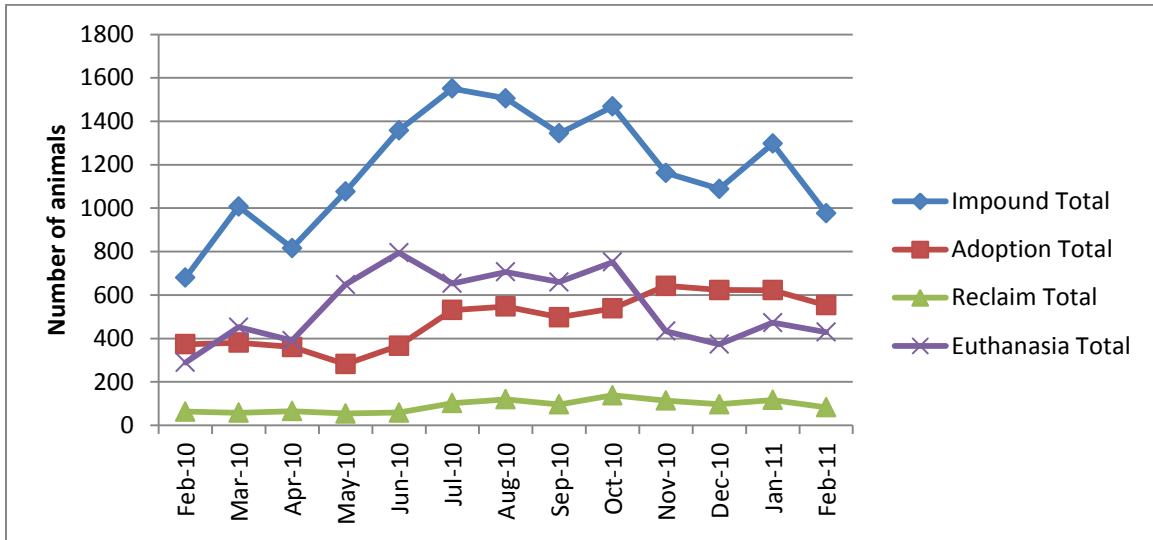
*Euthanasia:* Animals humanely euthanized at the Center. This includes animals that reside at the Animal Center and animals surrendered by their owner for euthanasia for medical or behavioral reasons.

## Rabies: Positive confirmed laboratory cases



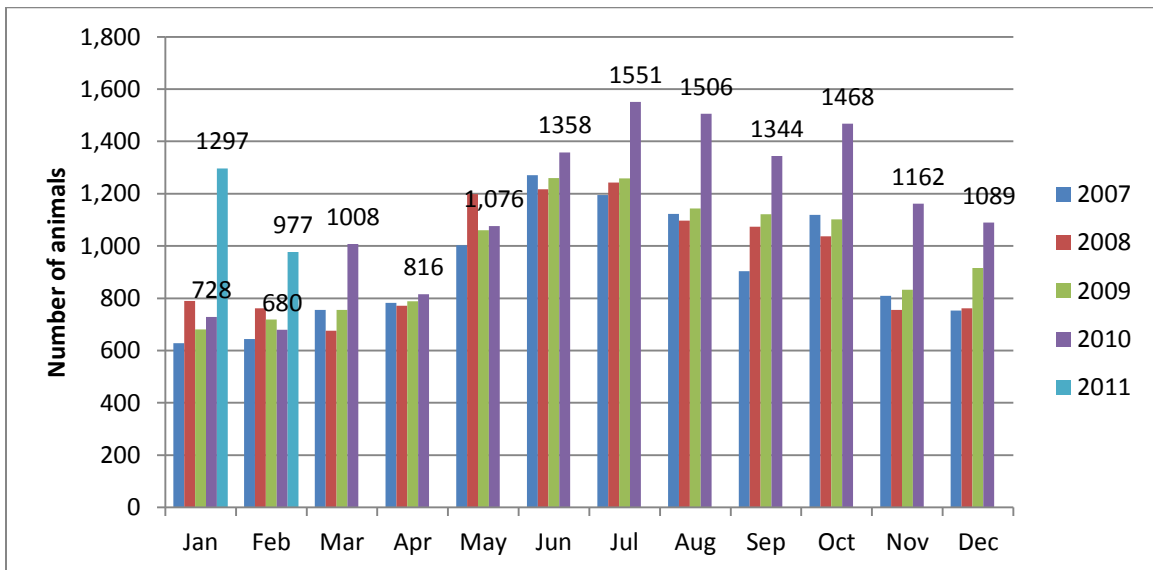
n=2 February 2011; year to date cases=2;

## Animal Center Statistical Summary



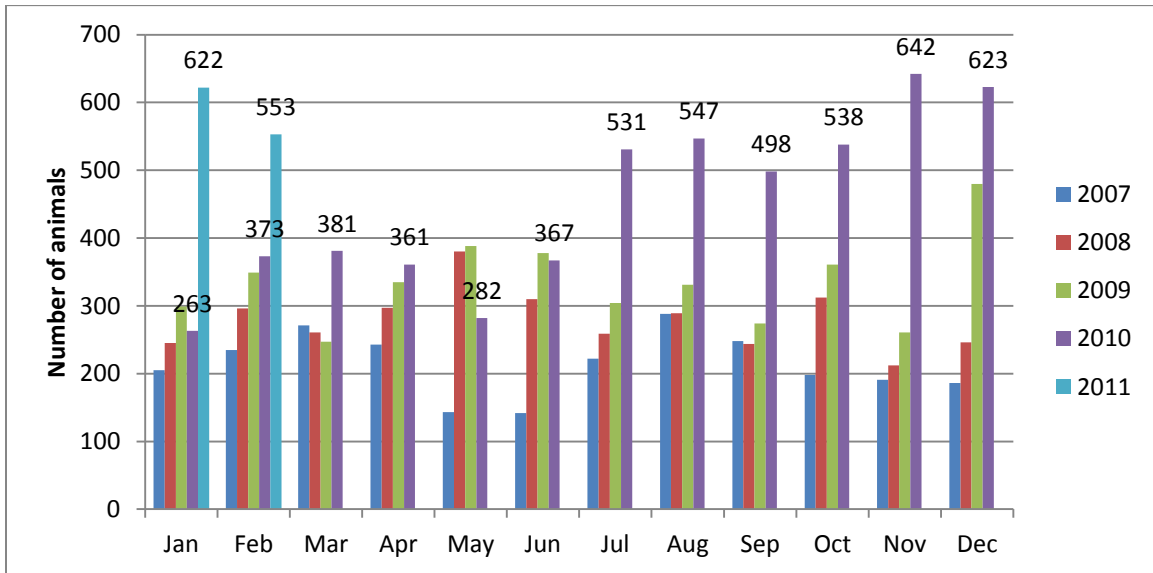
**Ebb and Flow of animal intake:** As depicted above, animal intake increases significantly in the warm months and drops in the cold months. This is typically associated with an increase in puppy and kitten litters in warm months. Adoptions do not normally increase to match the increase in intake so euthanasia rates can increase with intake. Over the past two months, adoptions and transfers have increased and euthanasia has decreased significantly, as seen above as the adoption line crosses and stays above the euthanasia line.

## Animal Center Intake monthly comparison



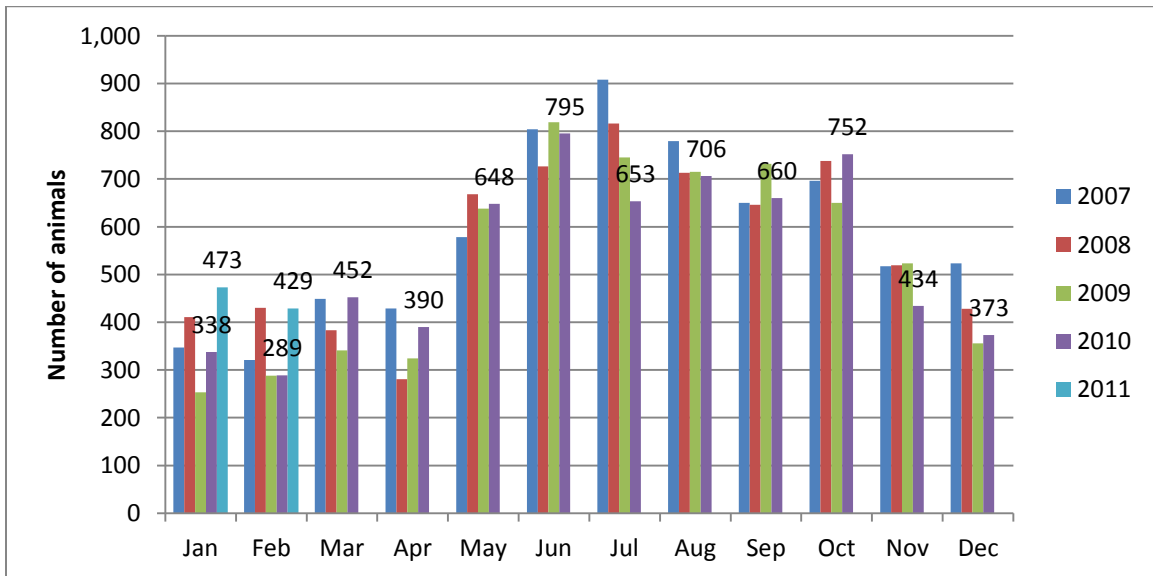
*n=977; Intake is 44% higher than February 2010.*

### Adoption/Transfer Monthly Comparison



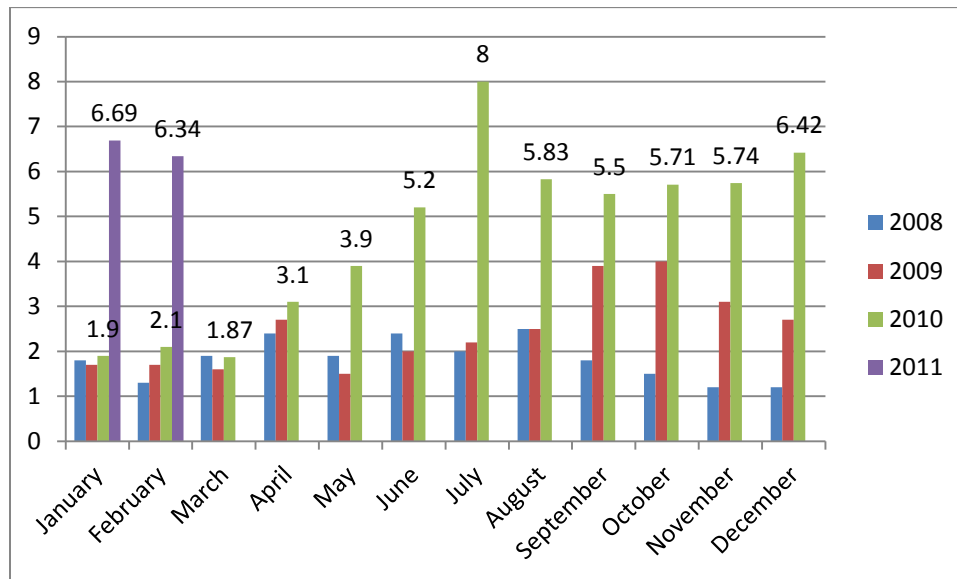
*n=553; data represents a combination of typical adoptions to new families and transfers to partner rescue groups; 48% increase in adoptions over February last year.*

### Euthanasia monthly comparison



*n=429; the euthanasia numbers are 48% higher than this month last year.*

## Volunteer hours by FTE



*n=6.34 FTEs; Volunteers logged enough hours this month to equal 6.34 extra full time employees. This includes dog walking, socialization, off-site events and work promoting animals in the community, just to name a few.*

**Wake County Animal Center  
Statistical Report**

**Date Range: July 1-February 28**

**Date Prepared:**

**3/1/2011**

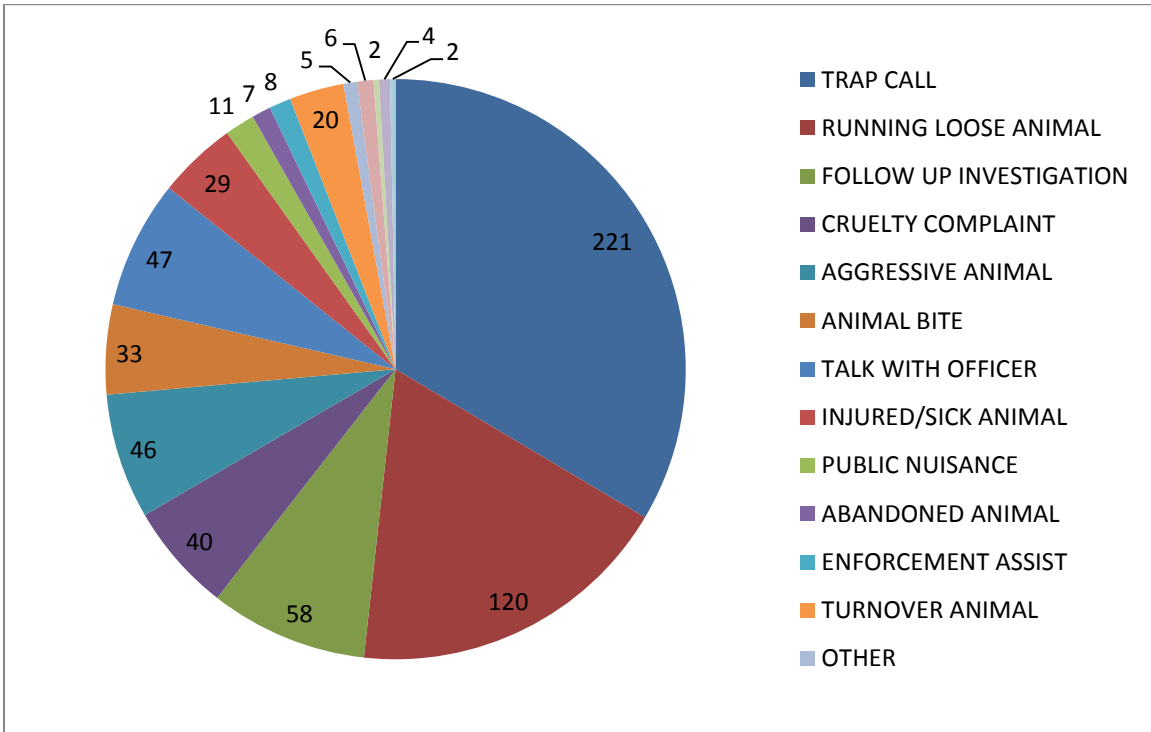
	<b>YTD FY09</b>	<b>Percent</b>	<b>YTD FY10</b>	<b>Percent</b>	<b>YTD FY11</b>	<b>Percent</b>	<b>Feb-11</b>	<b>Percent</b>
Intake Dog	3522		3628		5015		529	
Intake Cat	3552		3868		4941		425	
Intake Other	290		176		383		23	
<b>Intake Total</b>	<b>7364</b>		<b>7672</b>		<b>10339</b>		<b>977</b>	
Adoption Dog	1201	34%	1259	35%	2032	40.52%	275	51.98%
Adoption Cat	471	13%	623	16%	1144	23.15%	125	29.41%
Adoption Other	37	13%	80	45%	104	27.15%	7	30.43%
<b>Adoption Total</b>	<b>1709</b>	<b>23%</b>	<b>1962</b>	<b>26%</b>	<b>3280</b>	<b>31.72%</b>	<b>407</b>	<b>41.66%</b>
Transfer Dog	284	8%	520	14%	695	13.86%	95	17.96%
Transfer Cat	80	2%	127	3%	515	10.42%	47	11.06%
Transfer Other	136	47%	34	19%	61	15.93%	4	17.39%
<b>Transfer Total</b>	<b>500</b>	<b>7%</b>	<b>681</b>	<b>9%</b>	<b>1271</b>	<b>12.29%</b>	<b>146</b>	<b>14.94%</b>
Reclaim Dog	440	12%	448	12%	771	15.37%	73	13.80%
Reclaim Cat	54	2%	63	2%	97	1.96%	9	2.12%
Reclaim Other	2	1%	3	2%	6	1.57%	1	4.35%
<b>Reclaim Total</b>	<b>496</b>	<b>7%</b>	<b>514</b>	<b>7%</b>	<b>874</b>	<b>8.45%</b>	<b>83</b>	<b>8.50%</b>
Euth Dog	1389	39%	1254	35%	1255	25.02%	128	24.20%
Euth Cat	2924	82%	3039	79%	3156	63.87%	289	68.00%
Euth Other	88	30%	36	20%	167	43.60%	12	52.17%
<b>Euth Total</b>	<b>4401</b>	<b>60%</b>	<b>4329</b>	<b>56%</b>	<b>4578</b>	<b>44.28%</b>	<b>429</b>	<b>43.91%</b>

	<b>Total #</b>	<b>Percentage</b>
Change in intake from FY10 to FY11	2667	35%
Change in adoptions from FY10 to FY11	1318	67%
Change in transfers from FY10 to FY11	590	87%
Change in euthanasia from FY10 to FY11	249	6%
Change in total cat live releases	943	116%
Change in cat live release percentage		15%
Change in total dog live releases	1271	57%
Change in dog live release percentage		8%

**NOTE: A decrease in total numbers or percentage will show a (-) symbol and be in red. Increases will be in blue and will not show a (+) symbol.**

**NOTE: The first three columns show three different fiscal years, using the date range indicated on the top left corner of the report. Each month, we will compare the same date range across the current and past two fiscal years for equal comparison.**

### Animal Control Field Data



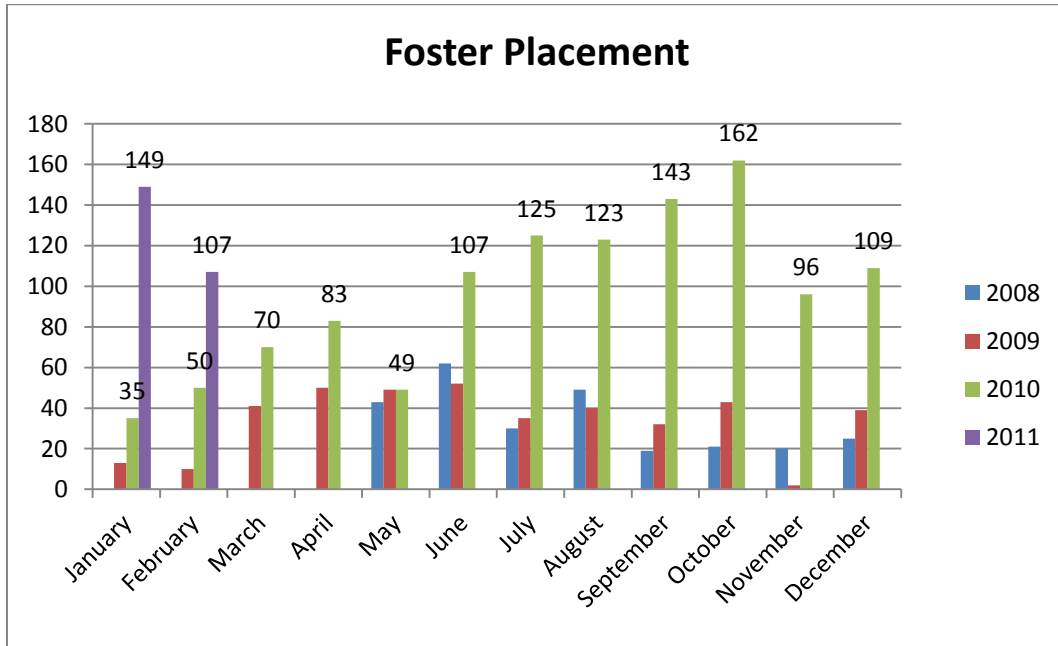
Wake County Animal Control responded to 659 requests for service in February 2011. Normally, Animal Control sees a decrease in requests for service when the temperatures decrease. Very few litters are born in the winter, reducing the amount of animals in the community. Complaints for stray or loose animals continues to contribute to about half of all calls.

## Foster and Rescue Report

During the month of February, one hundred seven (107) animals were placed into foster care.

During the month of February, one hundred forty-six (146) animals were placed into the care of partnering rescue groups and adoption centers.

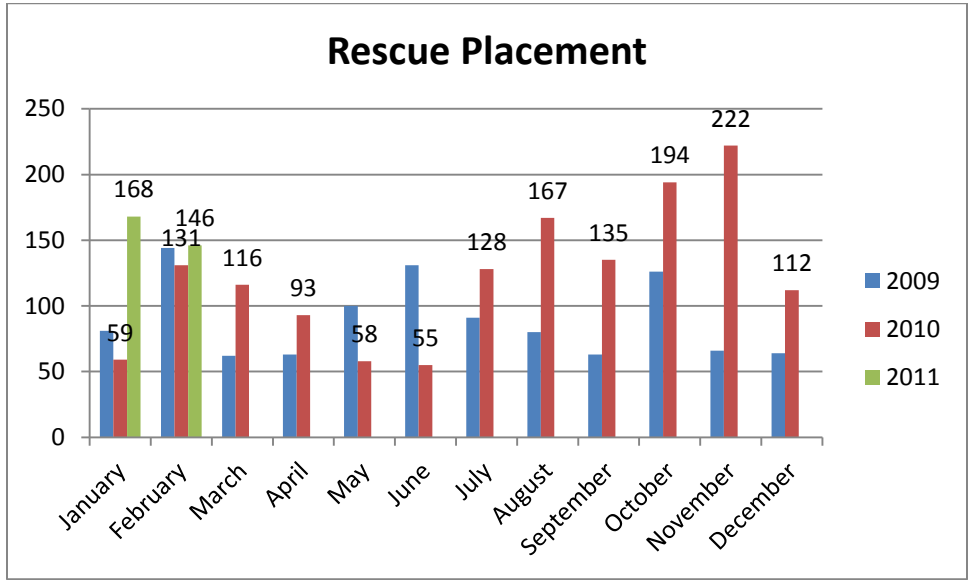
### Year over year comparison: Foster Placement



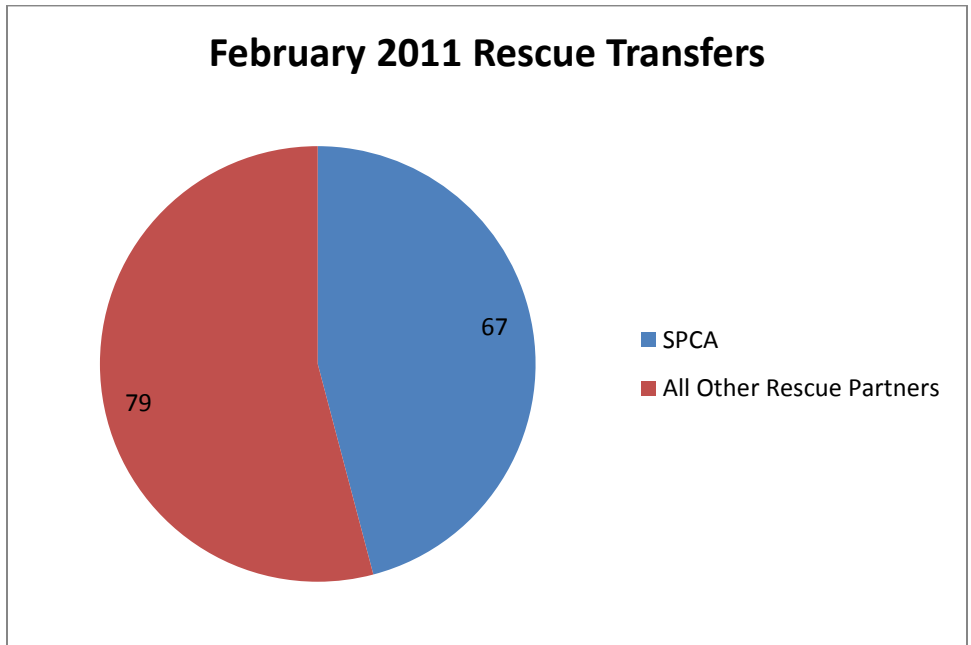
*n=107; The number of animals placed into foster care during February 2011, vastly exceeds the number of animals fostered during the previous two Februarys, which speaks to the continued growth and success of the Foster program and highlights the life-saving actions taken by the Center.*



**Year over year comparison: Rescue Placement**



*n=146; Another successful month with regard to rescue placement.*



*The SPCA of Wake County is our largest rescue partner, but we continue to have exceptional support from all of our rescue partners.*

## Top Canine and Feline Transfers

Shelter/Rescues	Dogs Transferred
SPCA of Wake County	25
Falkner Animal Rescue and Referral	14
Fallen Angels Pet Rescue	9
Paw Prints Animal Rescue	6
Hav-A-Hart Pet Rescue	5
2 Paws Up	4
Lab Rescue of NC	4

Shelters/Rescues	Cats Transferred
SPCA of Wake County	42
Paw Prints Animal Rescue	1