

Wake County

Animal Care, Control and Adoption

February 2012 Monthly Report



Definitions

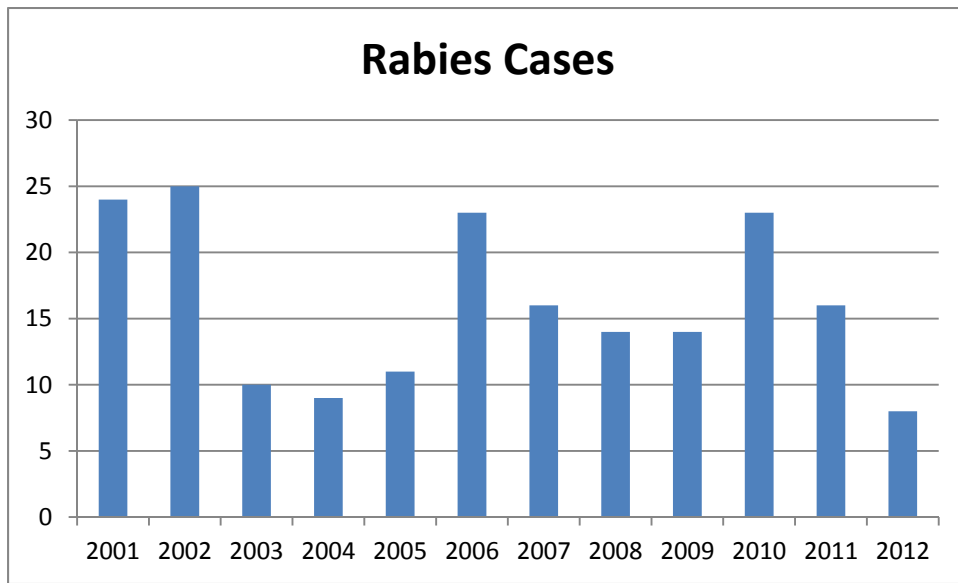
Intake: Animals admitted to the Animal Center. These include animals surrendered by the general public, picked up by Animal Control and animals born at the Center.

Adoption: Includes animals adopted to new homes and transferred to qualifying rescue groups.

Reclaim: Animals reclaimed by their owners after being found as strays or after completing quarantine period.

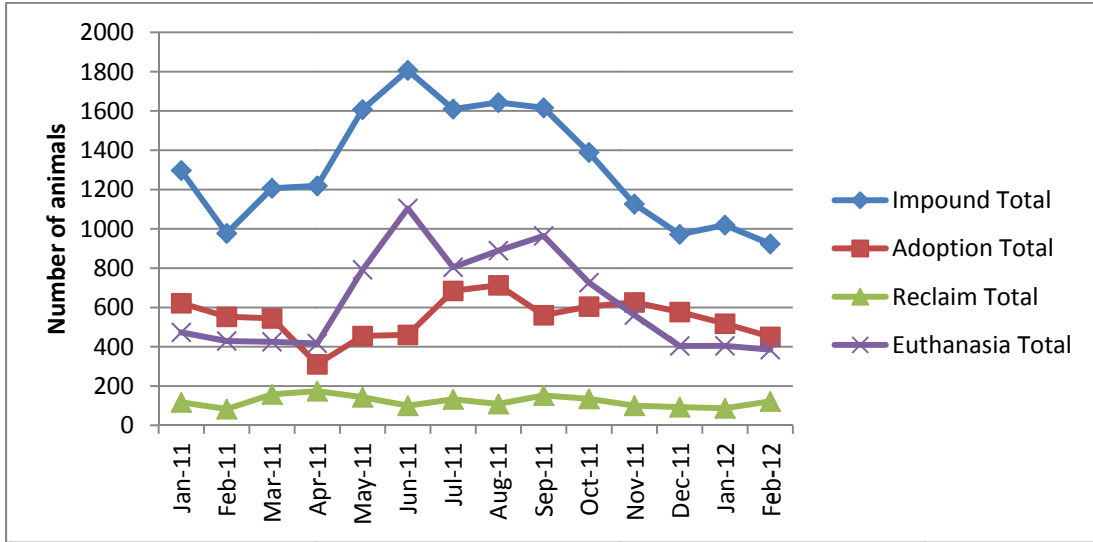
Euthanasia: Animals humanely euthanized at the Center. This includes animals that reside at the Animal Center and animals surrendered by their owner for euthanasia for medical or behavioral reasons.

Rabies: Positive confirmed laboratory cases



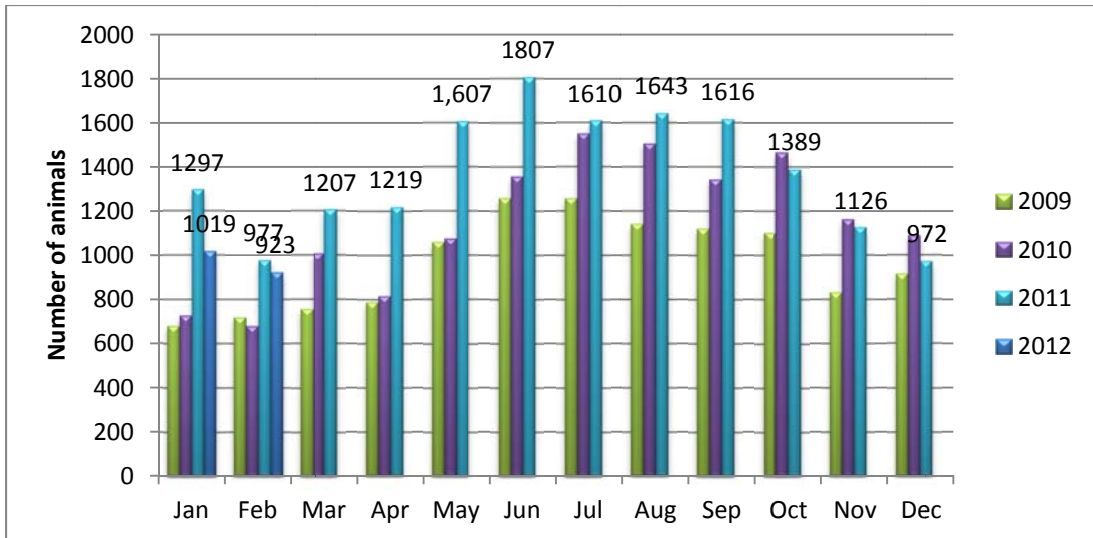
n=8; in the month of February 2012; year to date cases=8.

Animal Center Statistical Summary



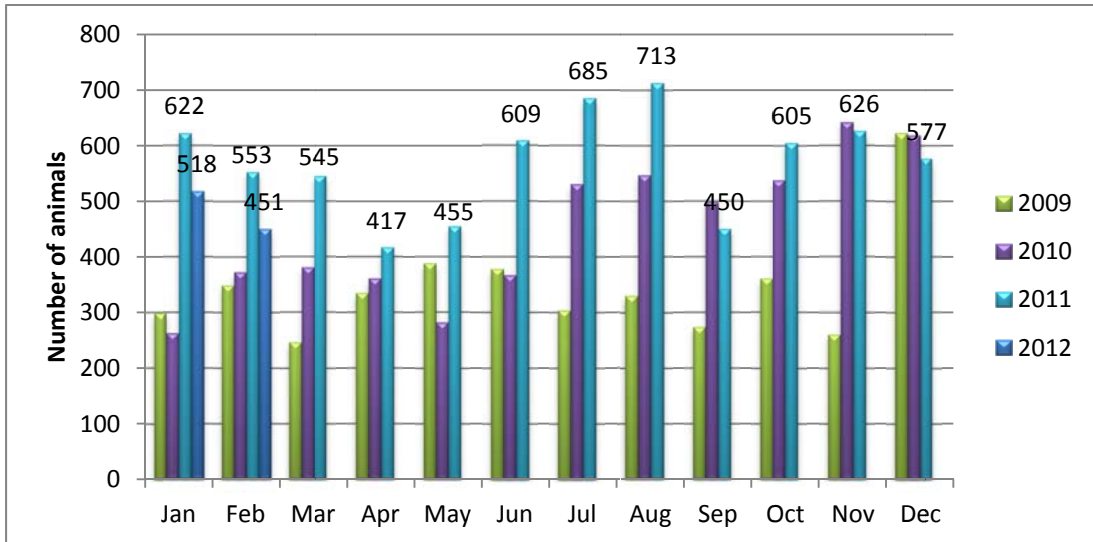
Ebb and Flow of animal intake: As depicted above, animal intake increases significantly in the warm months and drops in the cold months. This is typically associated with an increase in puppy and kitten litters in warm months. Adoptions do not normally increase to match the increase in intake so euthanasia rates can increase with intake.

Animal Center Intake monthly comparison



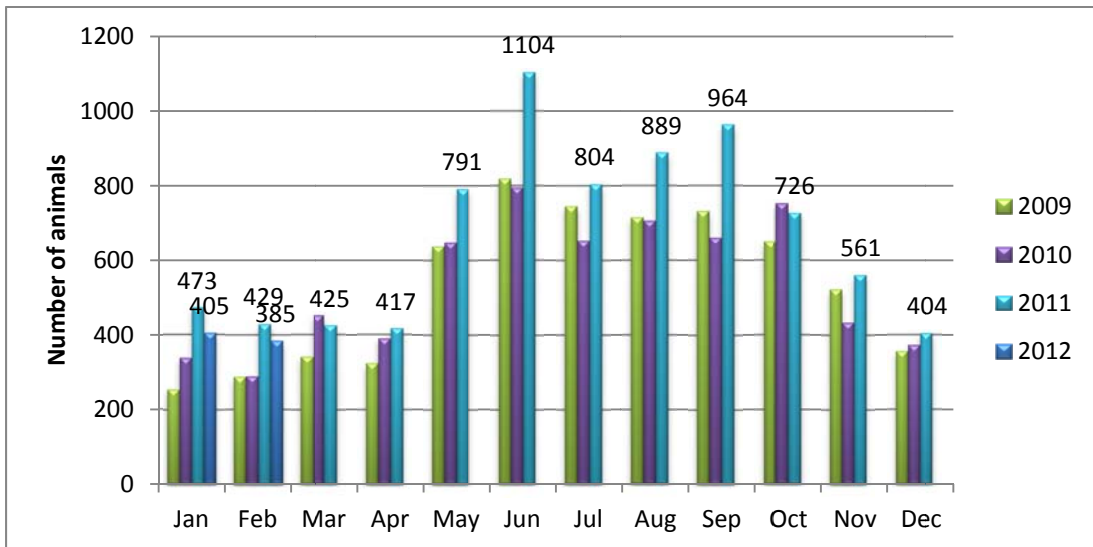
n=928; Intake is 6% lower than February 2011.

Adoption/Transfer Monthly Comparison



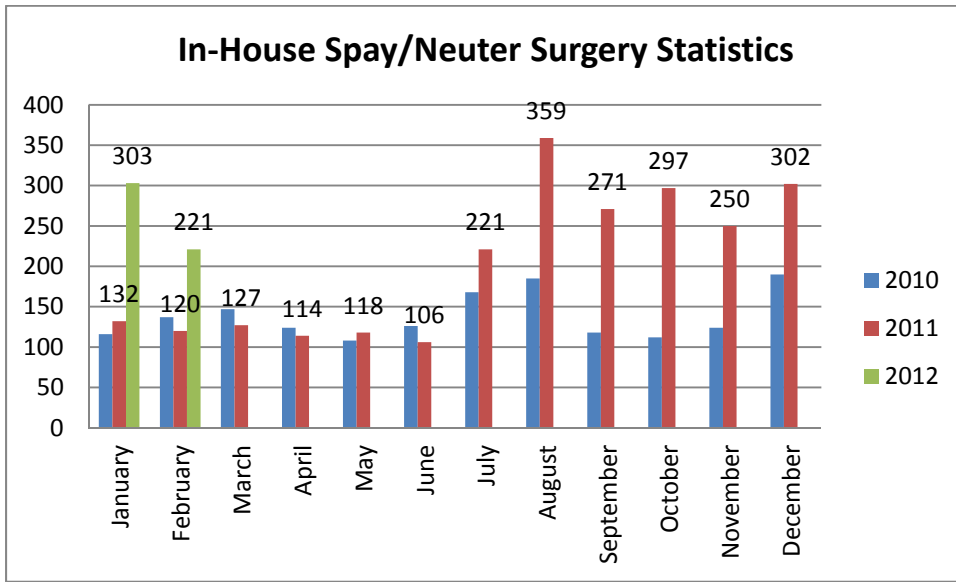
n=451; data represents a combination of typical adoptions to new families and transfers to partner rescue groups; 18.4% decrease in adoptions/transfers over February last year.

Euthanasia monthly comparison



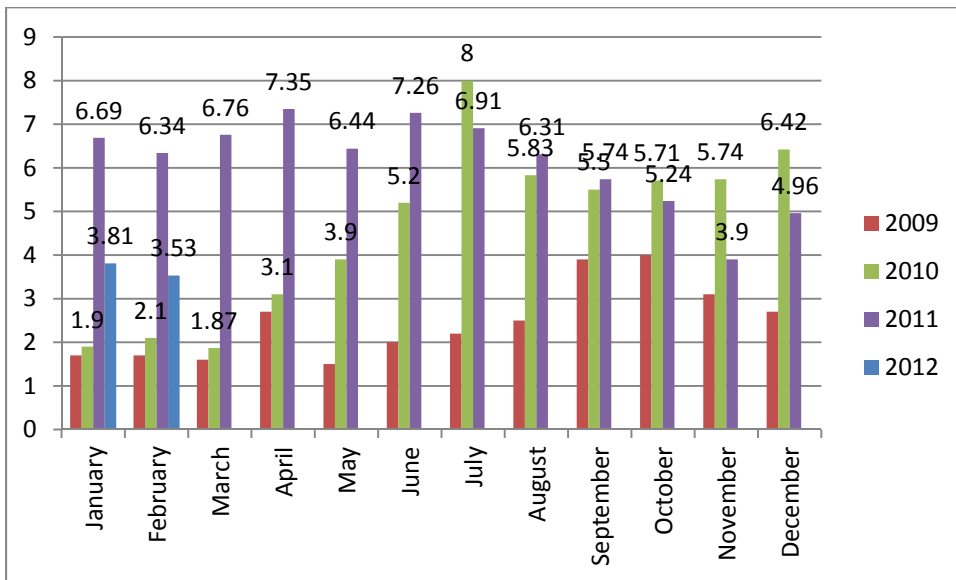
n=385.

Spay/Neuter Surgeries monthly comparison



n=221; spay/neuter surgeries; Two hundred and twenty-one (221) spay or neuter surgeries were performed during the month of February by the Center’s in-house veterinary program. The surgery counts reflect only those surgeries performed in the Center, not those performed by third-party clinics in the community (SNAP, Saving Lives, Safe Care Feline Clinic).

Volunteer hours by FTE



n=3.53 FTEs; Volunteers logged enough hours this month to equal 3.53 extra full time employees. This includes dog walking, socialization, off-site events and work promoting animals in the community, just to name a few.

Wake County Animal Center Statistical Report

Date Range: July 1, 2011 - February 29, 2012

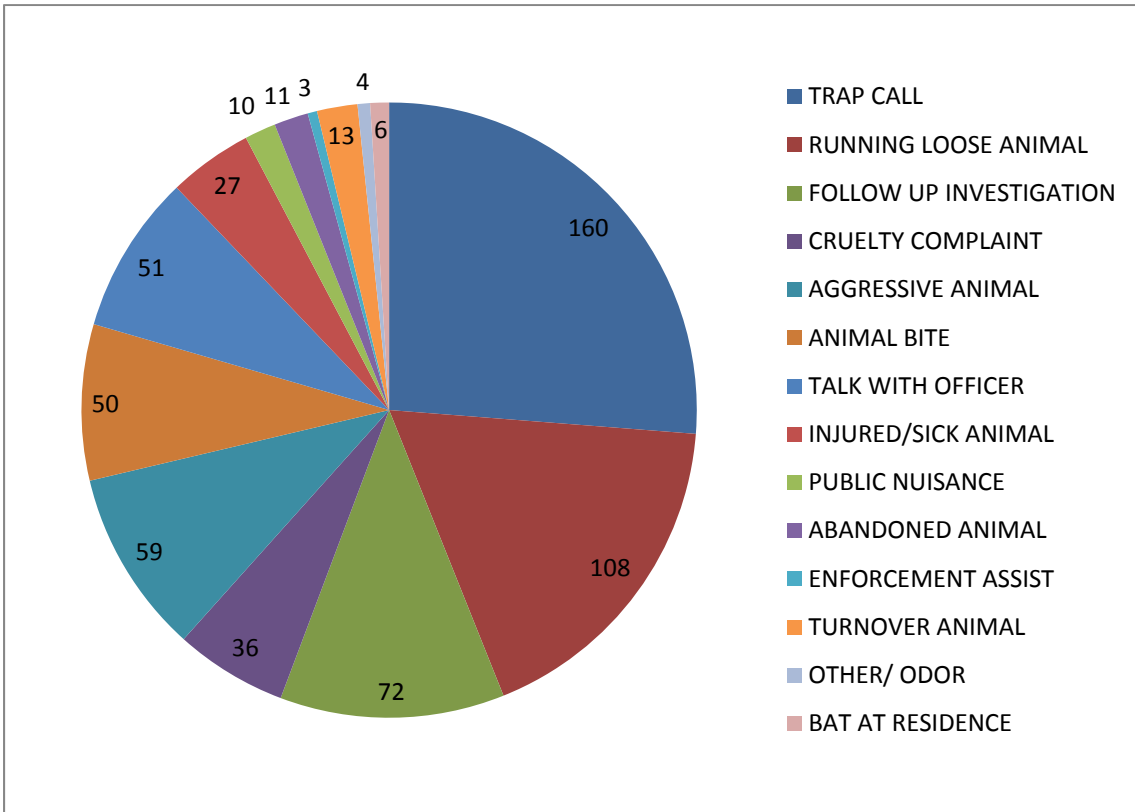
Date Prepared: 03/02/2012

	YTD FY09	%	YTD FY10	%	YTD FY11	%	YTD FY12	%	MTD	%
Intake Dog	3522		3628		5008		5052		527	
Intake Cat	3551		3868		4937		4752		371	
Intake Other	290		176		378		446		25	
Intake Total	7363		7672		10323		10250		923	
Adoption Dog	1193	34%	1264	35%	2032	41%	2106	41.7%	224	42.5%
Adoption Cat	465	13%	623	16%	1142	23%	1275	26.8%	123	33.2%
Adoption Other	37	21%	80	45%	104	28%	141	31.6%	11	44.0%
Adoption Total	1695	23%	1967	26%	3278	32%	3535	34.5%	360	39.0%
Transfer Dog	284	8%	520	14%	694	14%	601	11.9%	58	11.0%
Transfer Cat	80	2%	127	3%	515	10%	344	7.2%	30	8.1%
Transfer Other	136	47%	34	19%	61	16%	45	10.1%	3	12.0%
Transfer Total	500	7%	681	9%	1270	12%	990	9.7%	91	9.9%
Reclaim Dog	434	12%	443	12%	765	15%	819	16.2%	105	19.9%
Reclaim Cat	54	2%	62	2%	96	2%	106	2.2%	17	4.6%
Reclaim Other	2	1%	3	2%	6	2%	6	1.3%	0	0.0%
Reclaim Total	490	7%	508	7%	867	8%	931	9.1%	122	13.2%
Euth Dog	1403	40%	1264	35%	1265	25%	1679	33.2%	131	24.9%
Euth Cat	2934	83%	3048	79%	3169	64%	3276	68.9%	241	65.0%
Euth Other	89	31%	39	22%	174	46%	207	46.4%	13	52.0%
Euth Total	4426	60%	4351	57%	4608	45%	5165	50.4%	385	41.7%

	Total	%
Change in intake from FY11 to FY12	-73	-1%
Change in adoptions from FY11 to FY12	257	8%
Change in transfers from FY11 to FY12	-280	-22%
Change in euthanasia from FY11 to FY12	557	12%
Change in total cat live releases	-28	-1.6%
Change in total dog live releases	35	1.0%

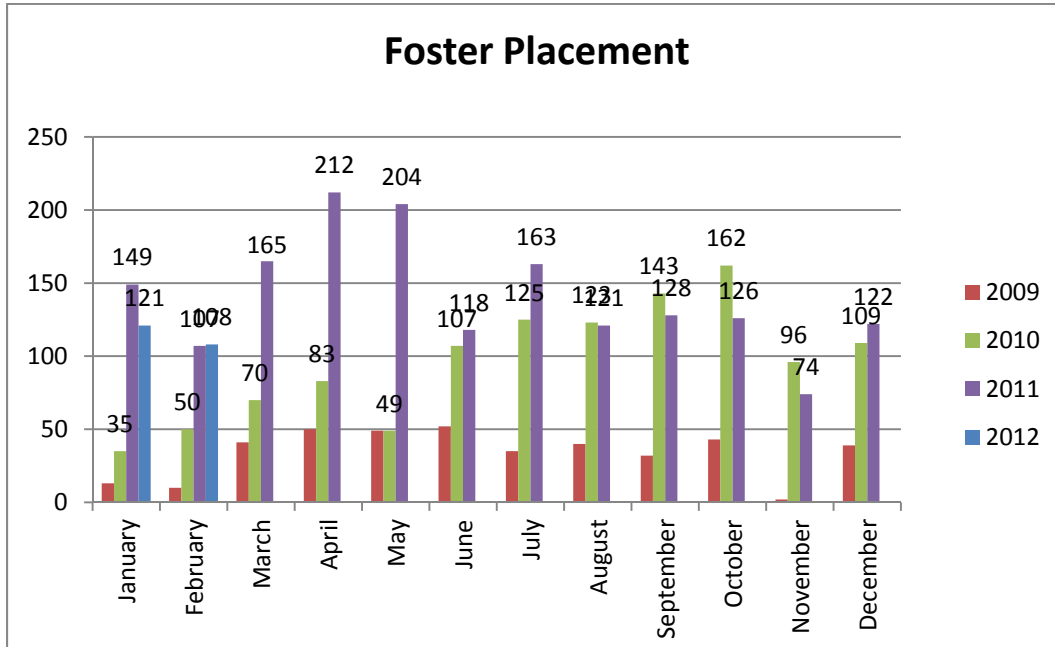
NOTE: A decrease in total numbers or percentage will show a (-) symbol and be in red. Increases will be in blue and will not show a (+) symbol. NOTE: The first three columns show three different fiscal years, using the date range indicated on the top left corner of the report. Each month, we will compare the same date range across the current and past three fiscal years for equal comparison.

Animal Control Field Data



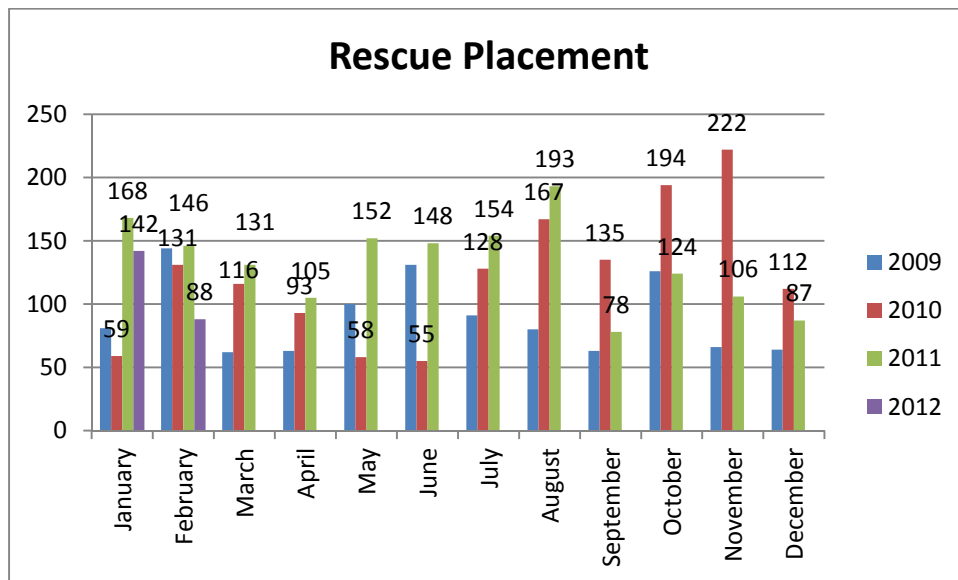
n=616; Wake County Animal Control responded to 616 requests for service in February 2012. Complaints for stray or loose animals continues to contribute to about half of all calls.

Year over year comparison: Foster Placement



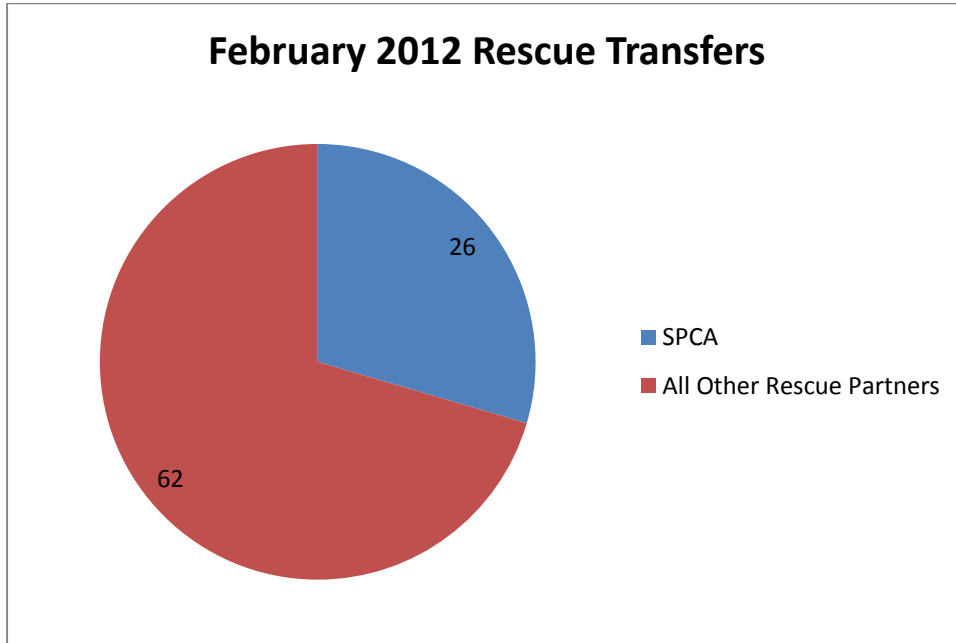
n=108; during the month of February, One hundred eight (108) animals were placed into foster care.

Year over year comparison: Rescue Placement



n=88; Rescue placement is 39% lower than this month last year. During the month of February, Eighty-eight (88) animals were placed into the care of partnering rescue groups and adoption centers.

Distribution of Rescue Placement



n=88; WCAC transferred 26 animals to the SPCA of Wake County and 62 animals to our other rescue partners.

Top Canine and Feline Transfers

February 2012	Canine
SPCA of Wake County	20
Rescue Ur Forever Friend	12
Mitchell Mill Animal Hospital	5
Refurbished Canine Rescue	3
Heaven and Earth Animal Rescue Team	2

February 2012	Feline
Carolina Veterinary Assist. & Adoption	8
SPCA of Wake County	6
North Carolina Animal Alliance	5
Marley's Cat Tales	3
Mitchell Mill Animal Hospital	2