

Wake County

Animal Care, Control and Adoption

January 2011 Monthly Report



Wake County
2/2/2011

Definitions

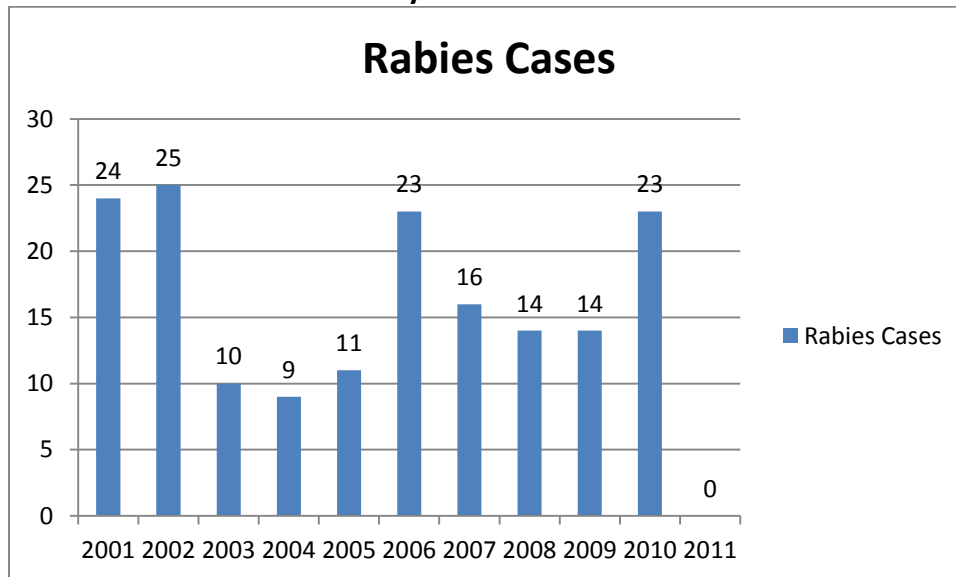
Intake: Animals admitted to the Animal Center. These include animals surrendered by the general public, picked up by Animal Control and animals born at the Center.

Adoption: Includes animals adopted to new homes and transferred to qualifying rescue groups.

Reclaim: Animals reclaimed by their owners after being found as strays or after completing quarantine period.

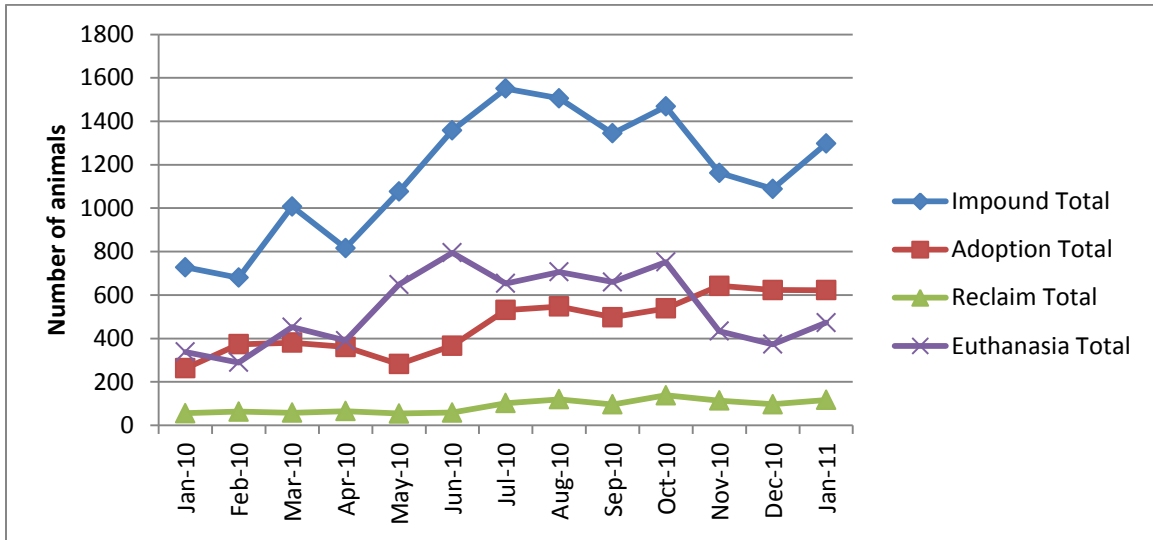
Euthanasia: Animals humanely euthanized at the Center. This includes animals that reside at the Animal Center and animals surrendered by their owner for euthanasia for medical or behavioral reasons.

Rabies: Positive confirmed laboratory cases



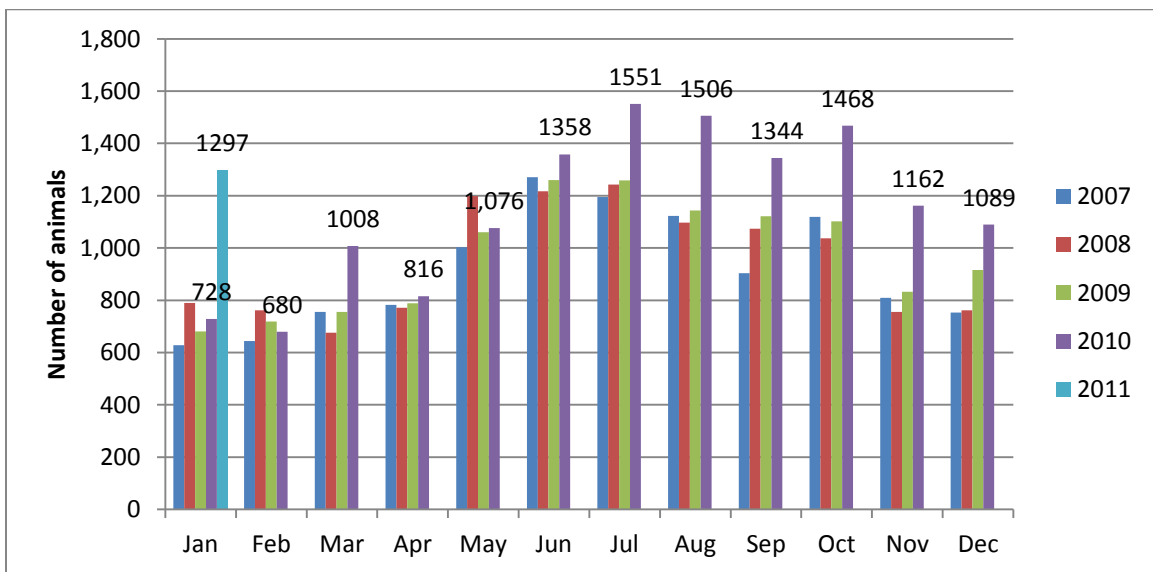
n=0 January 2011; year to date cases=0;

Animal Center Statistical Summary



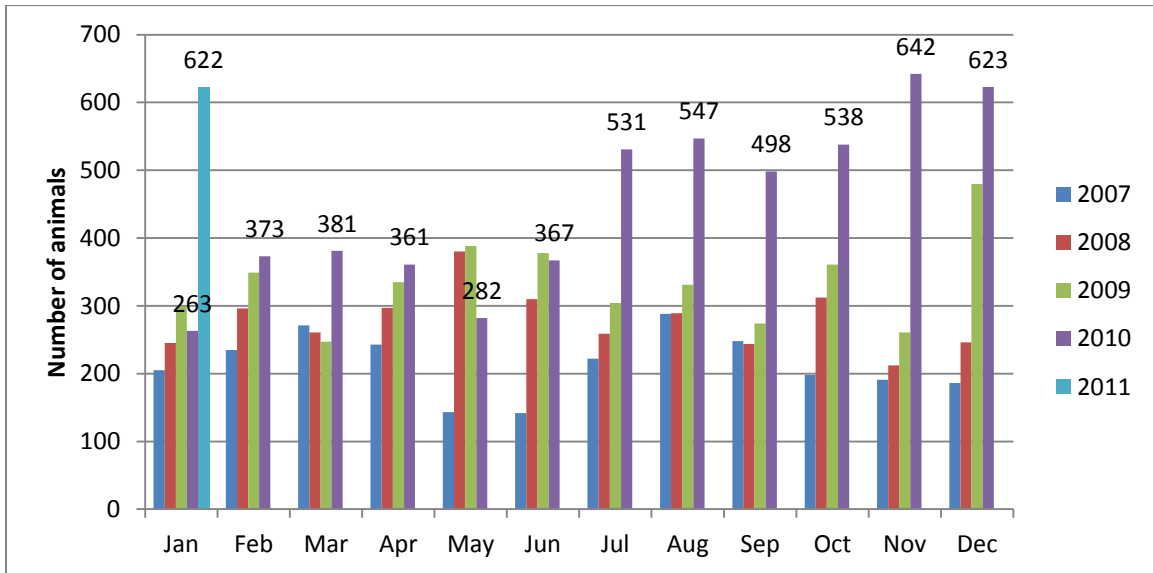
Ebb and Flow of animal intake: As depicted above, animal intake increases significantly in the warm months and drops in the cold months. This is typically associated with an increase in puppy and kitten litters in warm months. Adoptions do not normally increase to match the increase in intake so euthanasia rates can increase with intake. Over the past two months, adoptions and transfers have increased and euthanasia has decreased significantly, as seen above as the adoption line crosses and stays above the euthanasia line.

Animal Center Intake monthly comparison



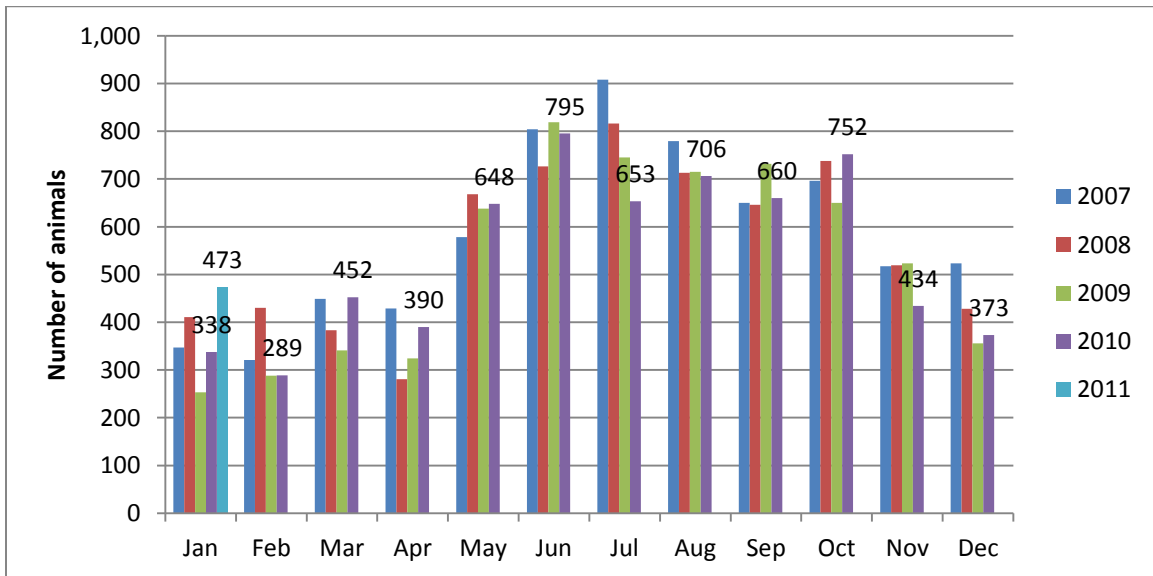
n=1297; Intake is 78% higher than January 2010.

Adoption/Transfer Monthly Comparison



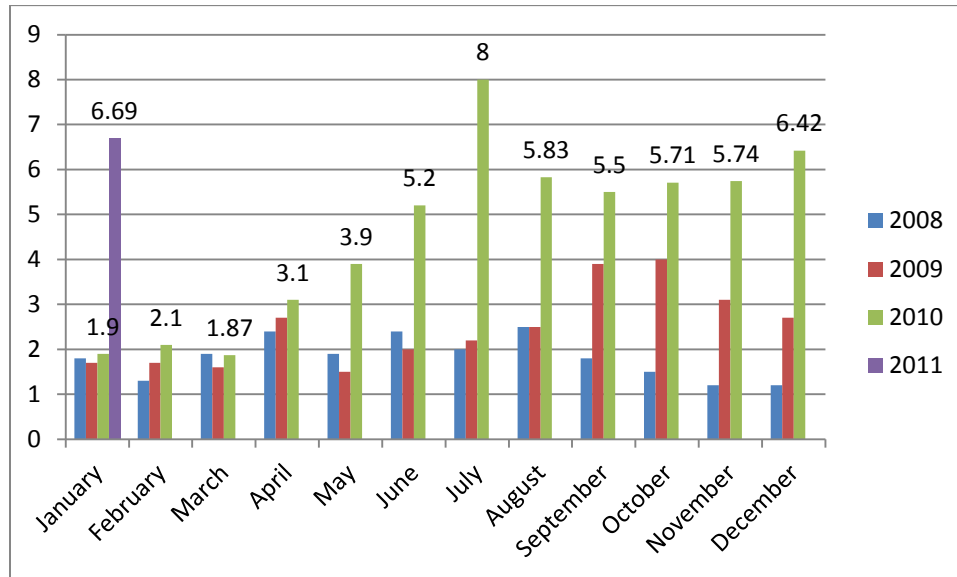
n=622; data represents a combination of typical adoptions to new families and transfers to partner rescue groups; 136% increase in adoptions over January.

Euthanasia monthly comparison



n=473; the euthanasia numbers are 40% higher than this month last year.

Volunteer hours by FTE



n=6.69 FTEs; Volunteers logged enough hours this month to equal 6.69 extra full time employees. This includes dog walking, socialization, off-site events and work promoting animals in the community, just to name a few.

**Wake County Animal Center
Statistical Report**

Date Range: July 1-January 31

Date Prepared:

2/2/2011

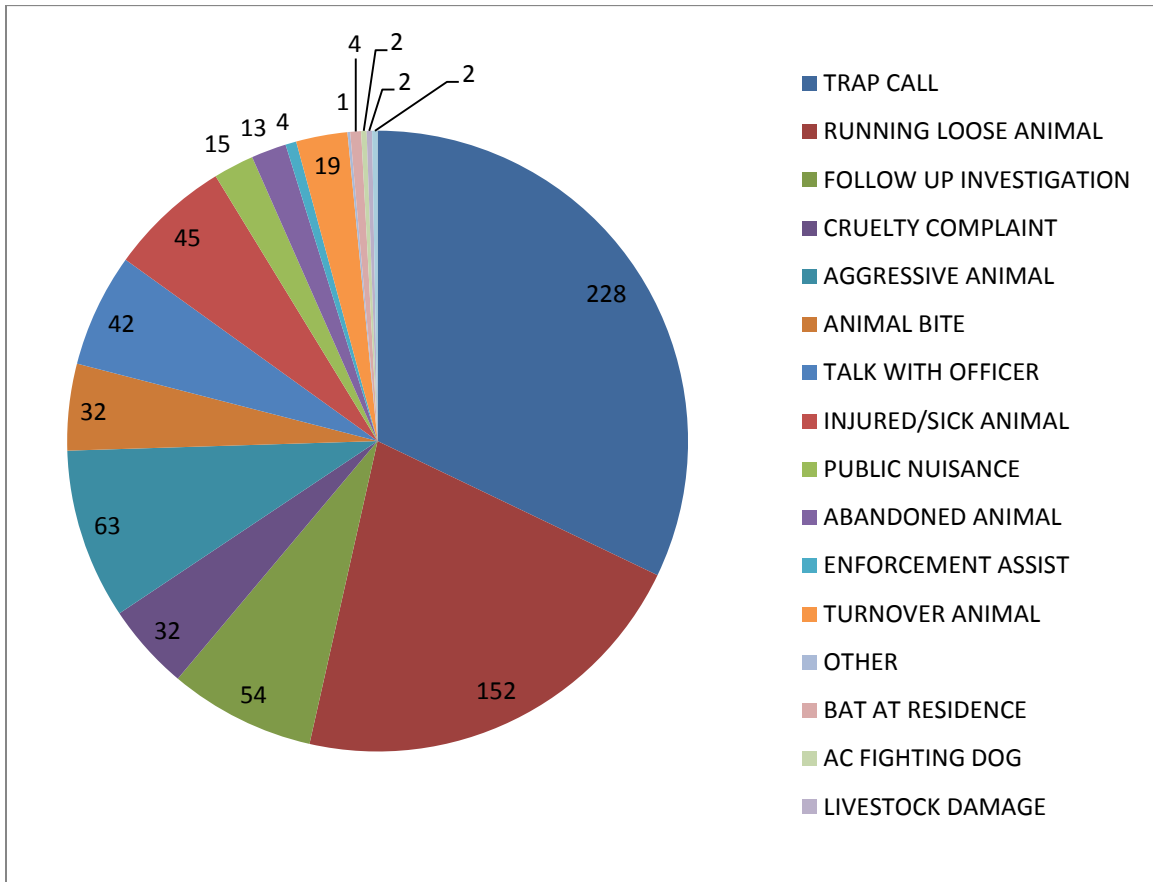
	YTD FY09	Percent	YTD FY10	Percent	YTD FY11	Percent	MTD	Percent
Intake Dog	3160		3230		4489		720	
Intake Cat	3302		3604		4516		511	
Intake Other	184		165		360		66	
Intake Total	6646		6999		9365		1297	
Adoption Dog	1056	33%	1098	34%	1760	39.21%	274	38.06%
Adoption Cat	418	13%	553	15%	1019	22.56%	159	31.12%
Adoption Other	31	17%	69	42%	97	26.94%	21	31.82%
Adoption Total	1505	23%	1720	25%	2876	30.71%	454	35.00%
Transfer Dog	250	8%	435	13%	600	13.37%	126	17.50%
Transfer Cat	63	2%	90	2%	469	10.39%	37	7.24%
Transfer Other	43	23%	25	15%	57	15.83%	5	7.58%
Transfer Total	356	5%	550	8%	1126	12.02%	168	12.95%
Reclaim Dog	390	12%	390	12%	694	15.46%	106	14.72%
Reclaim Cat	47	1%	55	2%	87	1.93%	11	2.15%
Reclaim Other	2	1%	3	2%	5	1.39%	0	0.00%
Reclaim Total	439	7%	448	6%	786	8.39%	117	9.02%
Euth Dog	1287	41%	1148	36%	1127	25.11%	131	18.19%
Euth Cat	2741	83%	2862	79%	2867	63.49%	302	59.10%
Euth Other	85	46%	30	18%	155	43.06%	40	60.61%
Euth Total	4113	62%	4040	58%	4149	44.30%	473	36.47%

	Total #	Percentage
Change in intake from FY10 to FY11	2366	34%
Change in adoptions from FY10 to FY11	1156	67%
Change in transfers from FY10 to FY11	576	105%
Change in euthanasia from FY10 to FY11	109	3%
Change in total cat live releases	877	126%
Change in cat live release percentage		16%
Change in total dog live releases	1131	59%
Change in dog live release percentage		8%

NOTE: A decrease in total numbers or percentage will show a (-) symbol and be in red. Increases will be in blue and will not show a (+) symbol.

NOTE: The first three columns show three different fiscal years, using the date range indicated on the top left corner of the report. Each month, we will compare the same date range across the current and past two fiscal years for equal comparison.

Animal Control Field Data



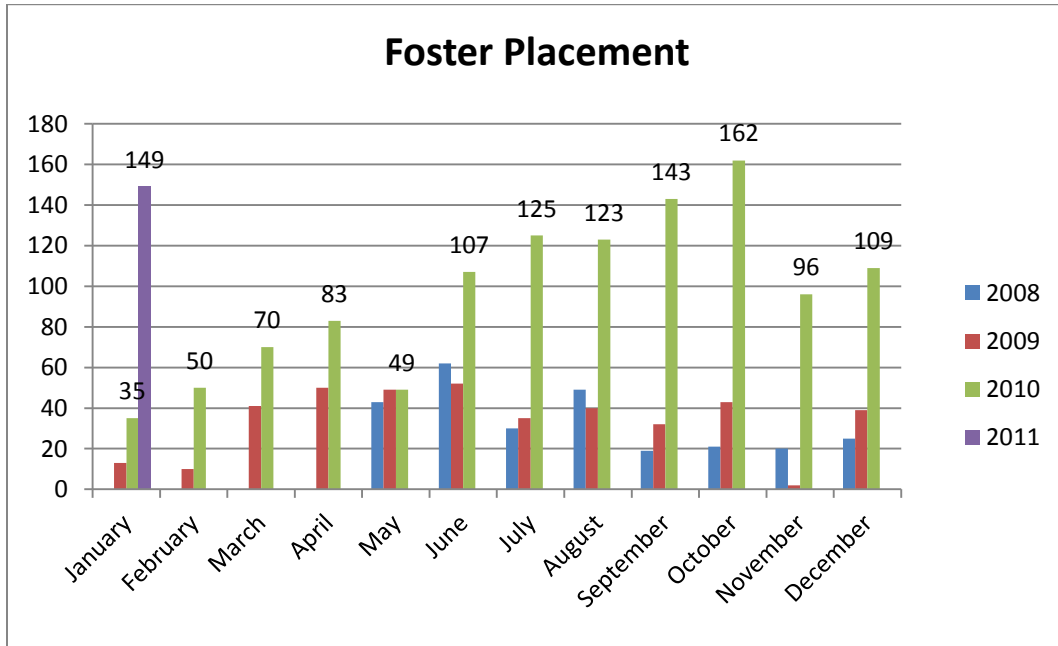
Wake County Animal Control responded to 710 requests for service in January 2011. Normally, Animal Control sees a decrease in requests for service when the temperatures decrease. Very few litters are born in the winter, reducing the amount of animals in the community. Complaints for stray or loose animals continues to contribute to about half of all calls.

Foster and Rescue Report

During the month of January, one hundred forty-nine (149) animals were placed into foster care.

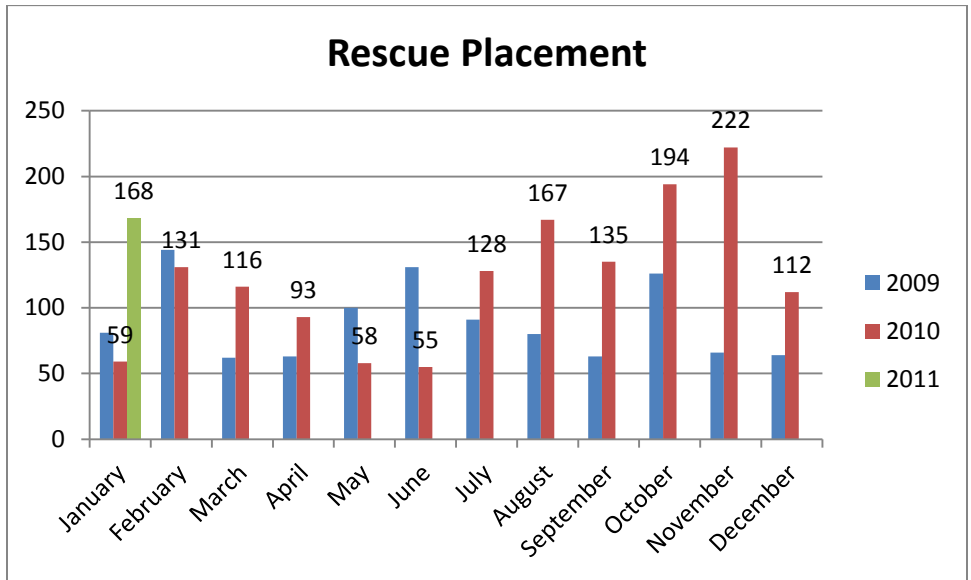
During the month of January, one hundred sixty-eight (168) animals were placed into the care of partnering rescue groups and shelters.

Year over year comparison: Foster Placement

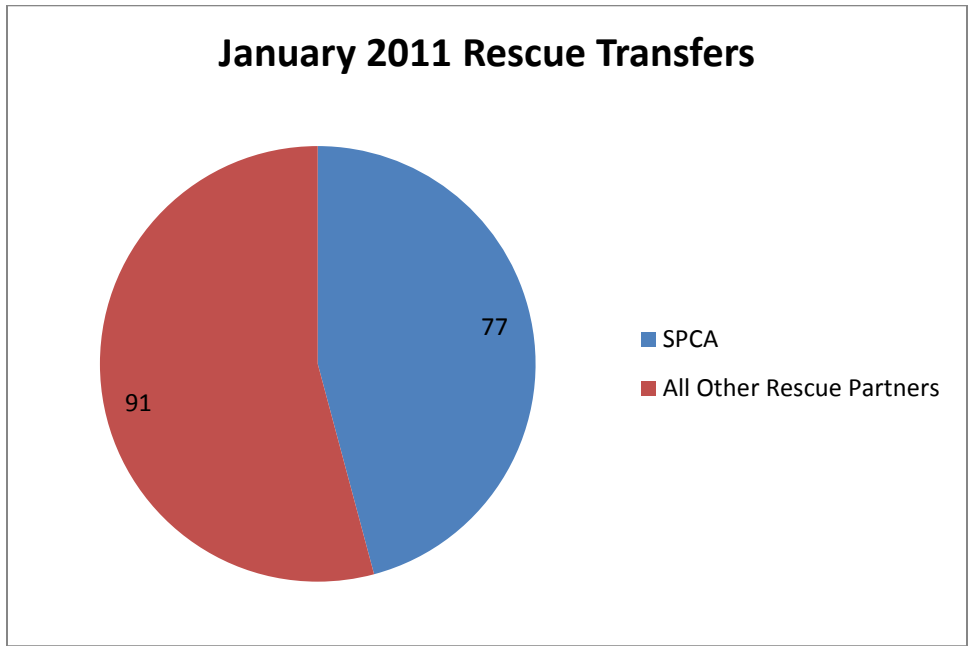


n=149; The number of animals placed into foster care during January 2011, vastly exceeds the number of animals fostered during the previous two Januarys.

Year over year comparison: Rescue Placement



n=168; Another record breaking January with regard to rescue placement.



The SPCA of Wake County is our largest rescue partner, but we continue to have exceptional support from our rescue partners.

Top Canine and Feline Transfers

Shelter/Rescues	Dogs Transferred
SPCA of Wake County	52
Marley's Cat Tales & Dogs Too!	13
Paw Prints Animal Rescue	9
Sound Pet Animal Rescue and Referral	8
Falkner Animal Rescue and Referral	7
Mitchell Mill A.H.	4
Fallen Angels Pet Rescue	3

Shelters/Rescues	Cats Transferred
SPCA of Wake County	25
Falkner Animal Rescue and Referral	5
Paw Prints Animal Rescue	1
Marley's Cat Tales & Dogs Too!	1