

Wake County

Animal Care, Control and Adoption

January 2012 Monthly Report



Definitions

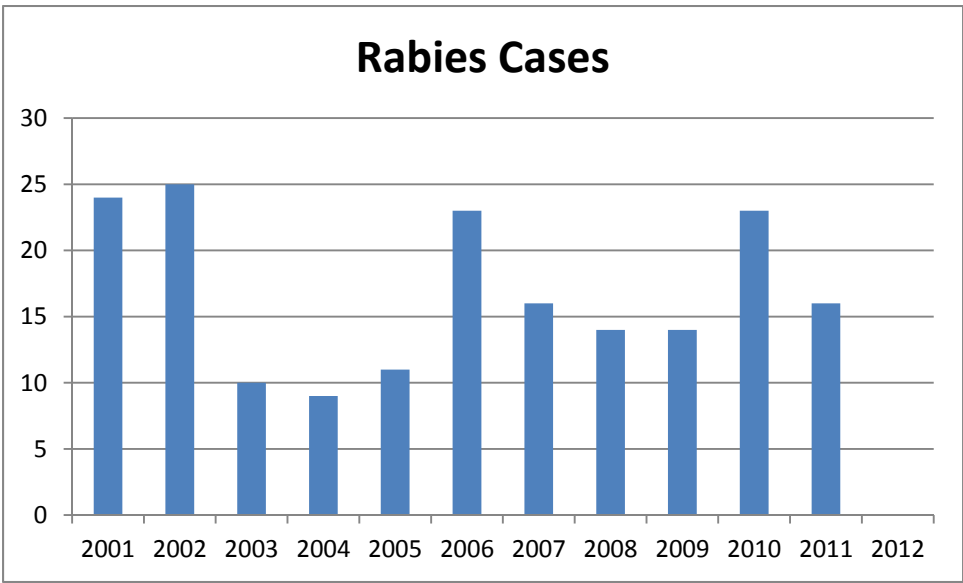
Intake: Animals admitted to the Animal Center. These include animals surrendered by the general public, picked up by Animal Control and animals born at the Center.

Adoption: Includes animals adopted to new homes and transferred to qualifying rescue groups.

Reclaim: Animals reclaimed by their owners after being found as strays or after completing quarantine period.

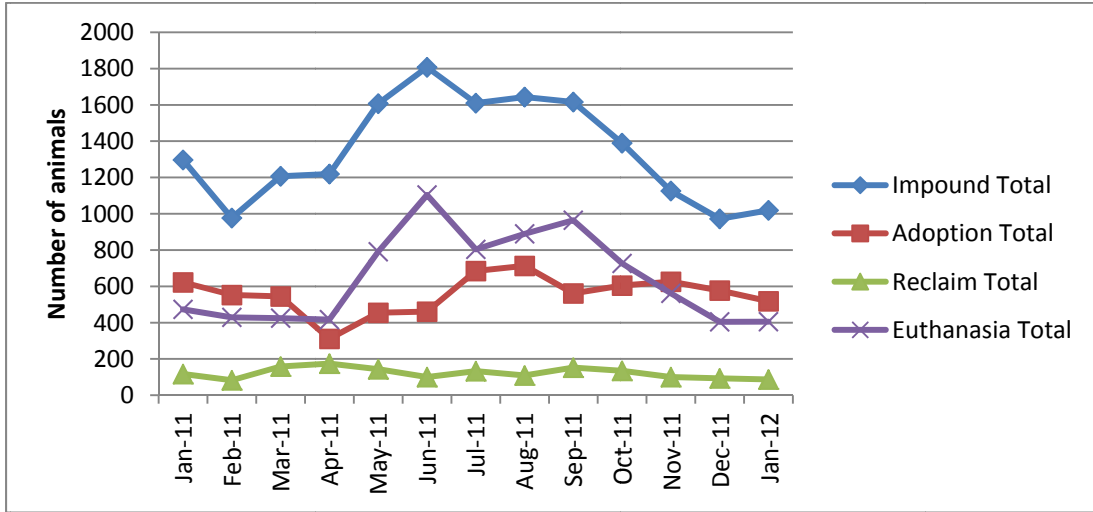
Euthanasia: Animals humanely euthanized at the Center. This includes animals that reside at the Animal Center and animals surrendered by their owner for euthanasia for medical or behavioral reasons.

Rabies: Positive confirmed laboratory cases



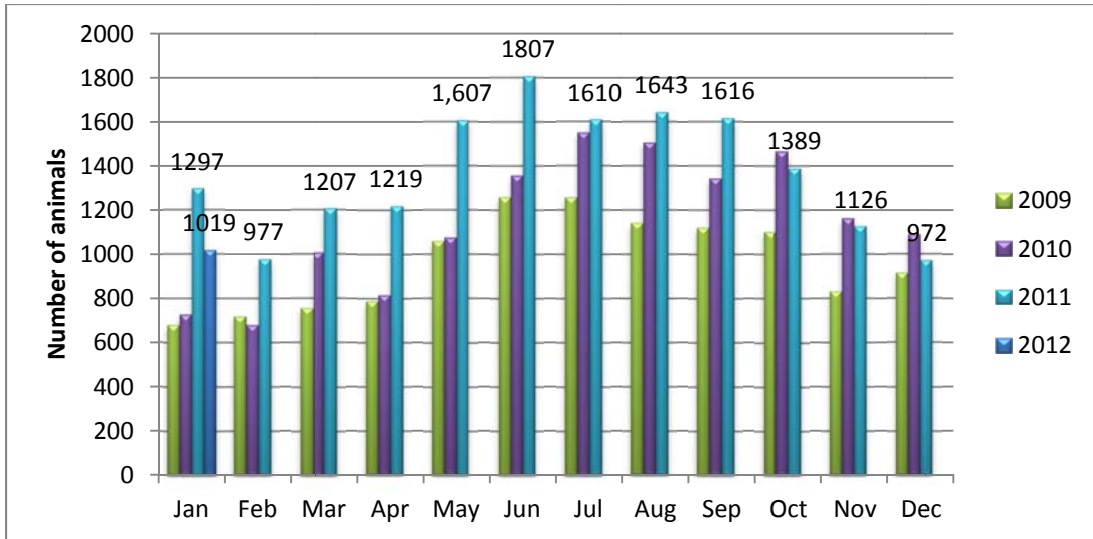
n=0; in the month of January 2012; year to date cases=0.

Animal Center Statistical Summary



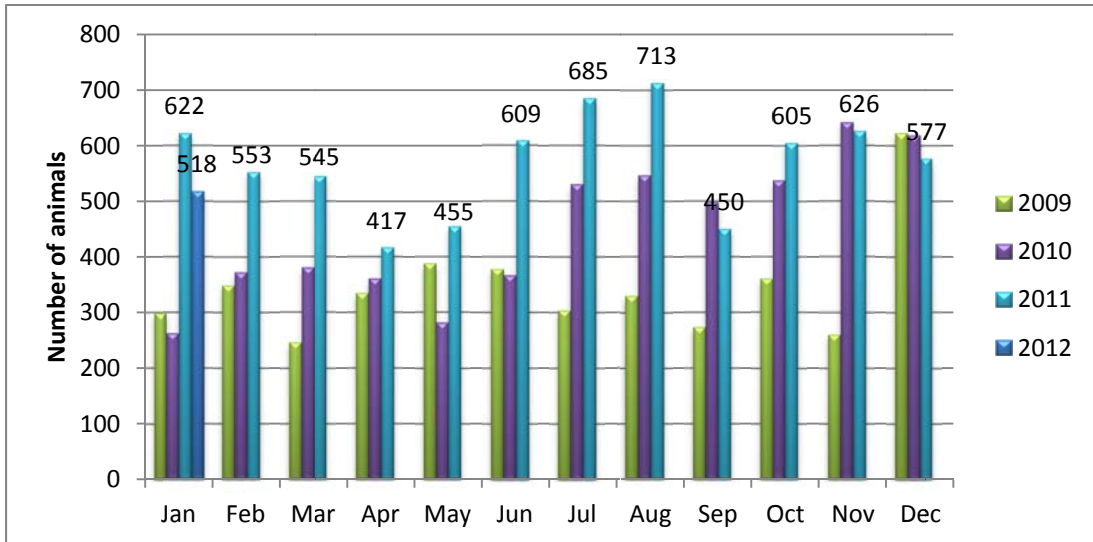
Ebb and Flow of animal intake: As depicted above, animal intake increases significantly in the warm months and drops in the cold months. This is typically associated with an increase in puppy and kitten litters in warm months. Adoptions do not normally increase to match the increase in intake so euthanasia rates can increase with intake.

Animal Center Intake monthly comparison



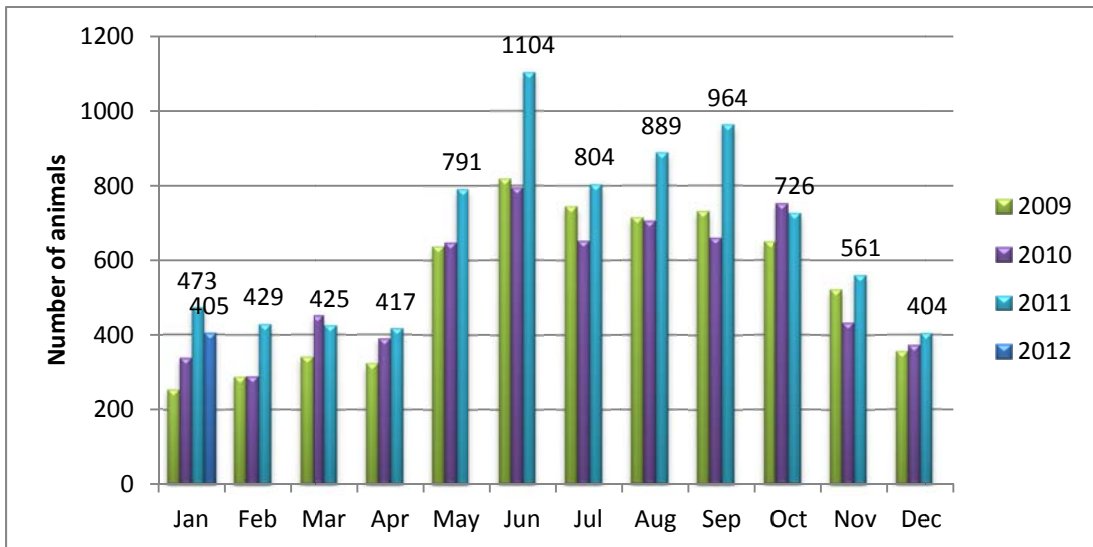
n=1019; Intake is 21% lower than January 2011.

Adoption/Transfer Monthly Comparison



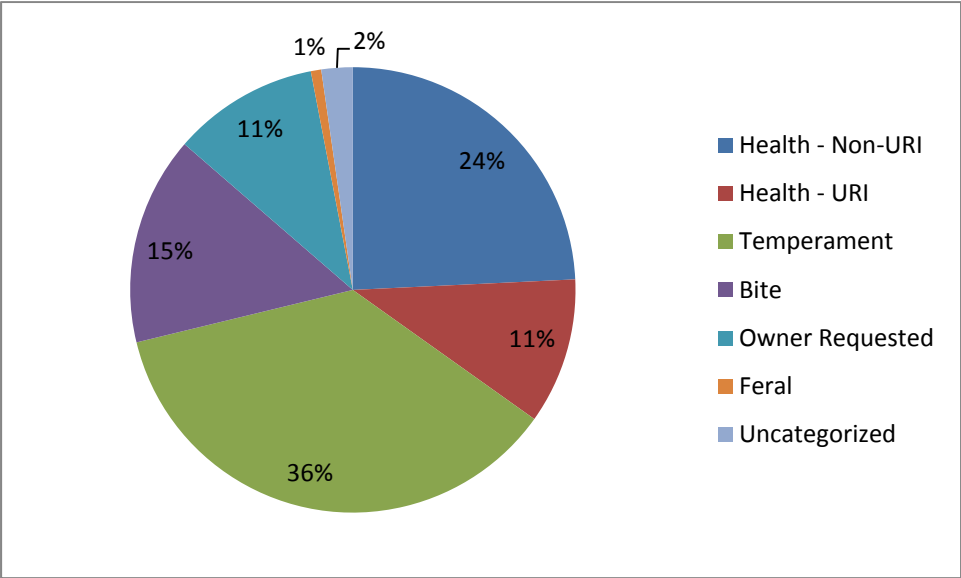
n=518; data represents a combination of typical adoptions to new families and transfers to partner rescue groups; 16.7% decrease in adoptions/transfers over January last year.

Euthanasia monthly comparison



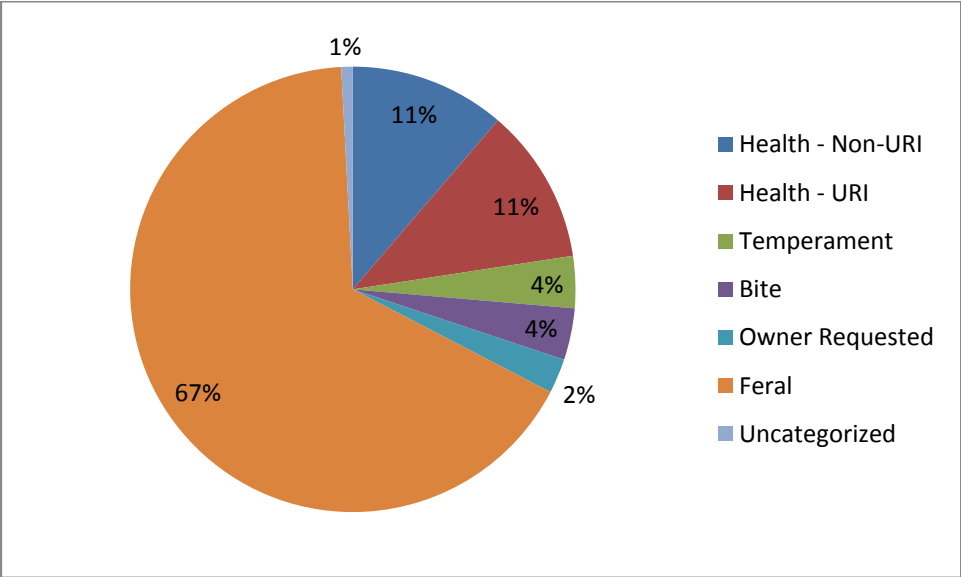
n=405.

Euthanasia Categories – Canine

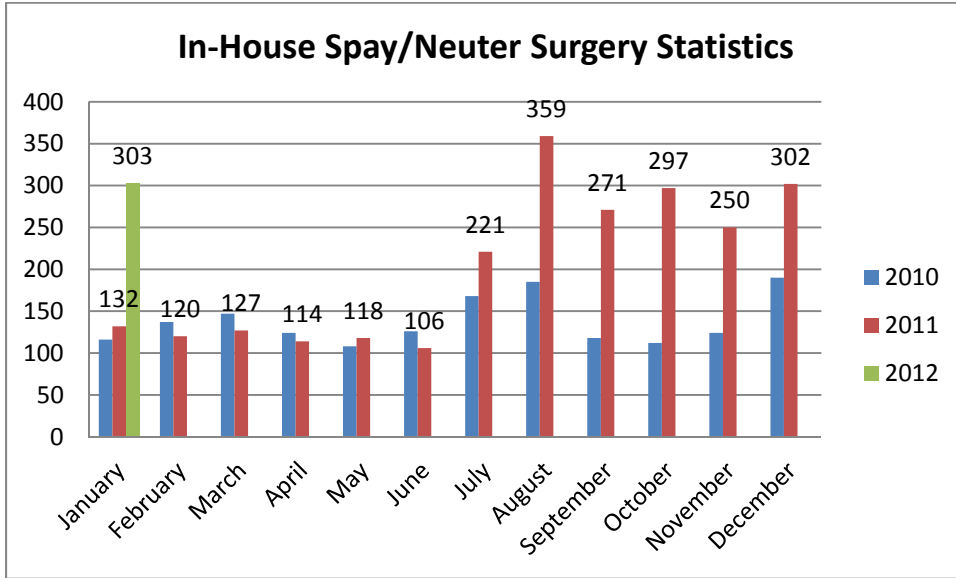


Canines euthanized for URI only after treatment efforts are unsuccessful

Euthanasia Categories – Feline

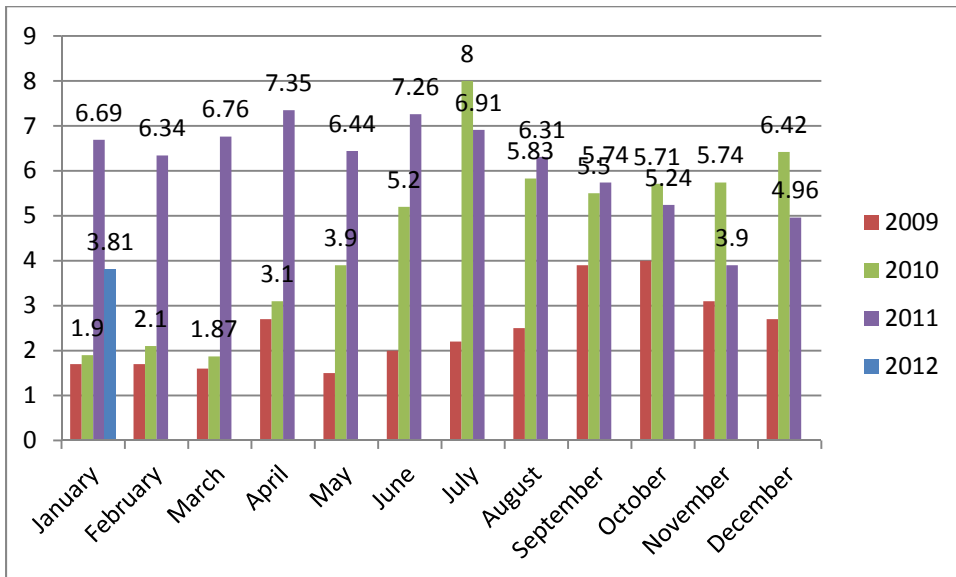


Spay/Neuter Surgeries monthly comparison



n=303; spay/neuter surgeries; Three hundred and three (303) spay or neuter surgeries were performed during the month of January by the Center’s in-house veterinary program. The surgery counts reflect only those surgeries performed in the Center, not those performed by third-party clinics in the community (SNAP, Saving Lives, Safe Care Feline Clinic).

Volunteer hours by FTE



n=3.81 FTEs; Volunteers logged enough hours this month to equal 3.81 extra full time employees. This includes dog walking, socialization, off-site events and work promoting animals in the community, just to name a few.

Wake County Animal Center Statistical Report

Date Range: July 1, 2011 - January 31, 2012

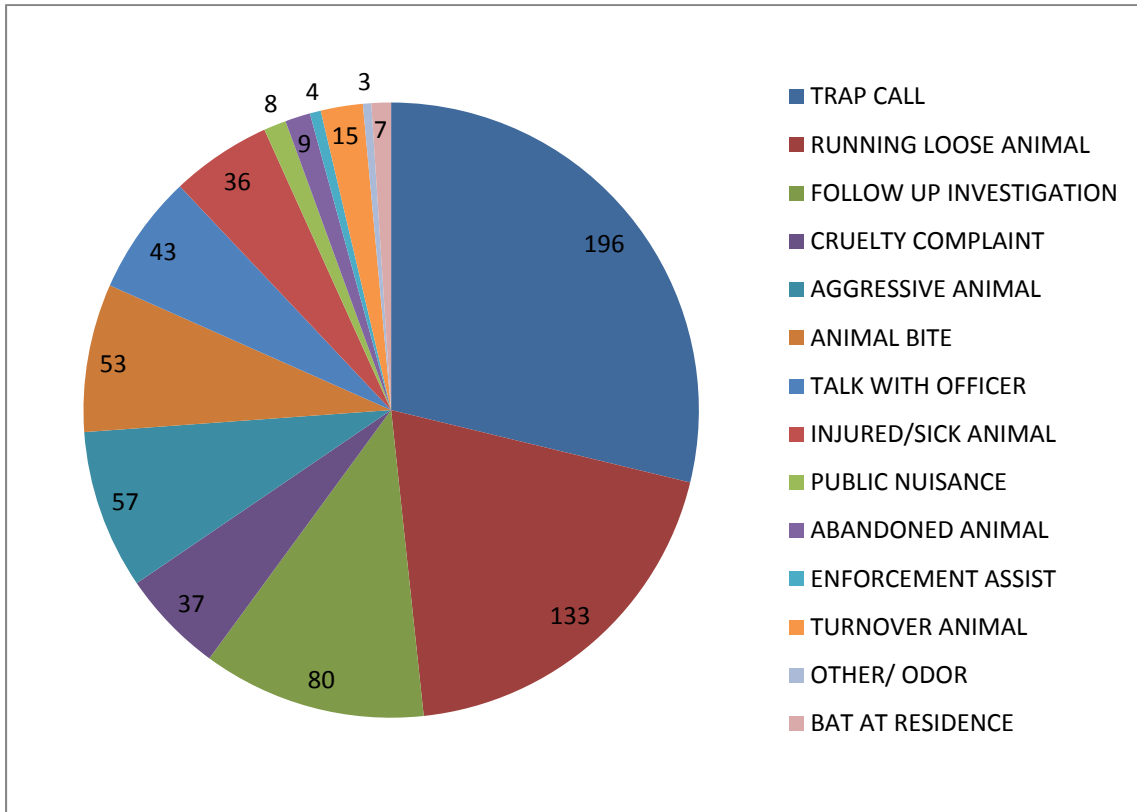
Date Prepared: 2/08/2012

	YTD FY09	%	YTD FY10	%	YTD FY11	%	YTD FY12	%	MTD	%
Intake Dog	3160		3230		4480		4525		549	
Intake Cat	3301		3604		4512		4381		419	
Intake Other	184		165		355		418		51	
Intake Total	6645		6999		9347		9324		1019	
Adoption Dog	1040	33%	1088	34%	1741	39%	1882	41.6%	234	42.6%
Adoption Cat	411	12%	539	15%	1000	22%	1152	26.3%	124	29.6%
Adoption Other	26	21%	57	35%	91	26%	130	31.1%	18	35.3%
Adoption Total	1491	22%	1724	25%	2871	31%	3175	34.1%	378	37.1%
Transfer Dog	250	8%	435	13%	599	13%	543	12.0%	85	15.5%
Transfer Cat	63	2%	90	2%	468	10%	314	7.2%	54	12.9%
Transfer Other	43	23%	25	15%	57	16%	42	10.0%	3	5.9%
Transfer Total	356	5%	550	8%	1124	12%	899	9.6%	142	13.9%
Reclaim Dog	389	12%	388	12%	693	15%	714	15.8%	82	14.9%
Reclaim Cat	47	1%	55	2%	87	2%	89	2.0%	5	1.2%
Reclaim Other	2	1%	3	2%	5	1%	6	1.4%	0	0.0%
Reclaim Total	438	7%	446	6%	785	8%	809	8.7%	87	8.5%
Euth Dog	1296	41%	1158	36%	1133	25%	1545	34.1%	132	24.0%
Euth Cat	2747	83%	2870	80%	2879	64%	3035	69.3%	247	58.9%
Euth Other	86	47%	33	20%	160	45%	194	46.4%	25	49.0%
Euth Total	4136	62%	4062	58%	4174	45%	4777	51.2%	405	39.7%

	Total	%
Change in intake from FY11 to FY12	-23	0%
Change in adoptions from FY11 to FY12	304	11%
Change in transfers from FY11 to FY12	-225	-20%
Change in euthanasia from FY11 to FY12	603	14%
Change in total cat live releases	0	0.0%
Change in total dog live releases	106	3.5%

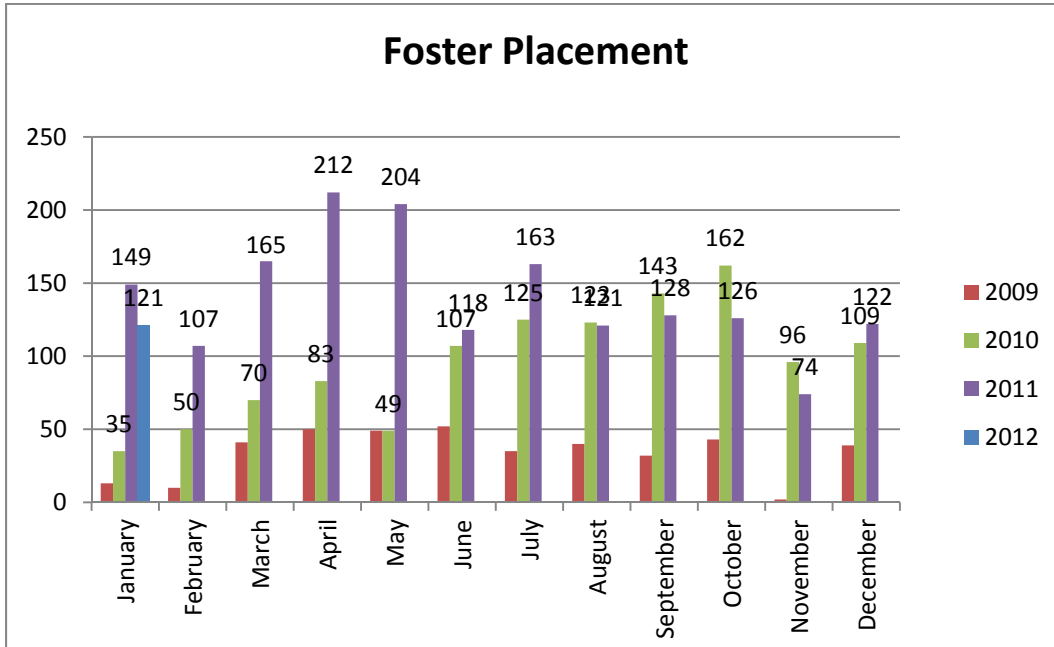
NOTE: A decrease in total numbers or percentage will show a (-) symbol and be in red. Increases will be in blue and will not show a (+) symbol. NOTE: The first three columns show three different fiscal years, using the date range indicated on the top left corner of the report. Each month, we will compare the same date range across the current and past three fiscal years for equal comparison.

Animal Control Field Data



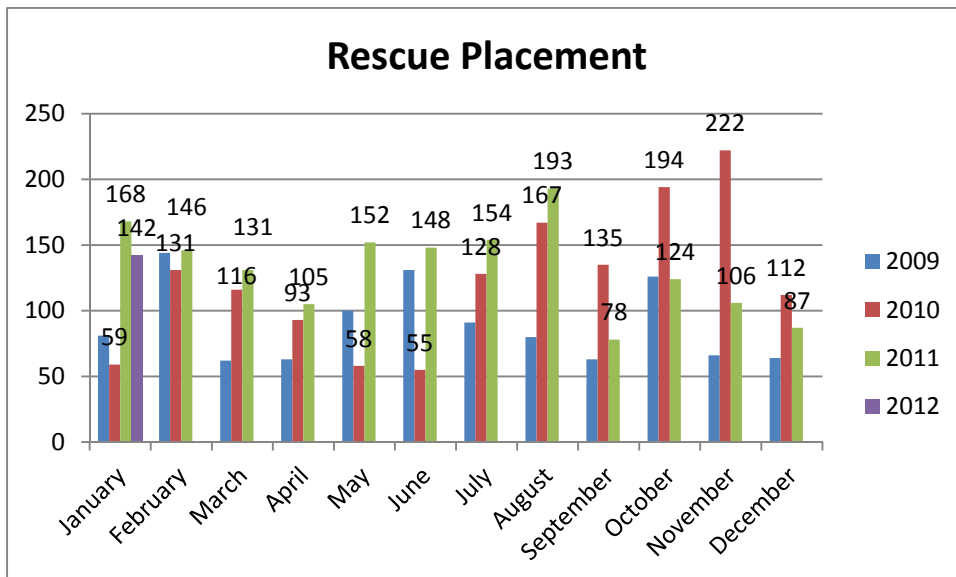
n=683; Wake County Animal Control responded to 683 requests for service in January 2012. Complaints for stray or loose animals continues to contribute to about half of all calls.

Year over year comparison: Foster Placement



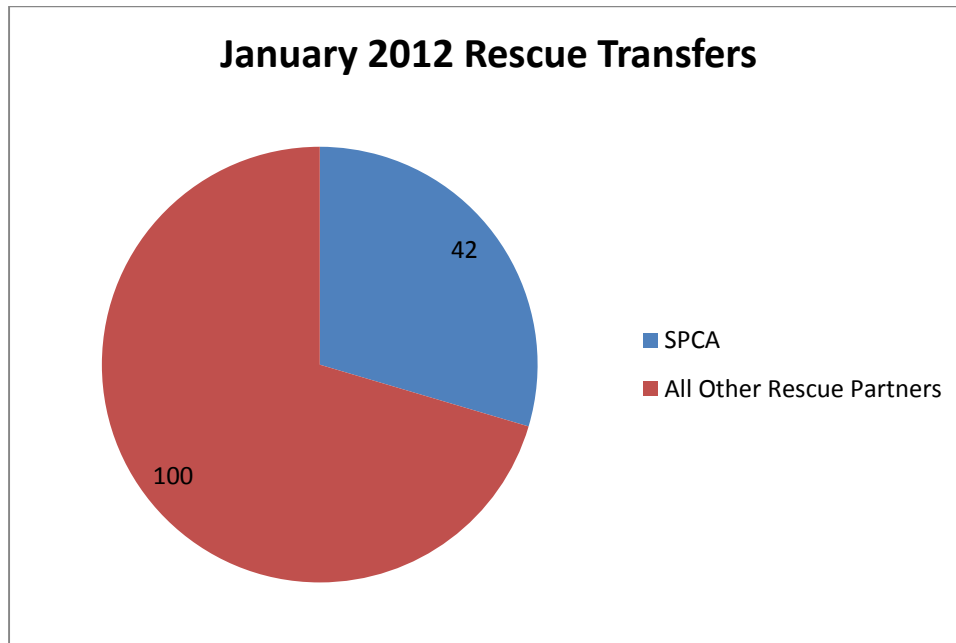
n=121; during the month of January, One hundred twenty-One (121) animals were placed into foster care.

Year over year comparison: Rescue Placement



n=142; Rescue placement is 15% lower than this month last year. During the month of January, One Hundred Forty Two (142) animals were placed into the care of partnering rescue groups and adoption centers.

Distribution of Rescue Placement



n=142; WCAC transferred 42 animals to the SPCA of Wake County and 100 animals to our other rescue partners.

Top Canine and Feline Transfers

January 2012	Canine
SPCA of Wake County	13
Camp Canines	9
Refurbished Canine Rescue	8
2 Paws Up	5
Paw Prints Animal Rescue	5
A New Leash on Life Dog Rescue	3

January 2012	Feline
SPCA of Wake County	10
Goathouse Refuge	8
Safe Haven for Cats	7
Atheneus Humanities Foundation	6
Marley's Cat Tales	4
2 Paws Up	2