

Wake County

# Animal Care, Control and Adoption

March 2011 Monthly Report



Wake County  
4/8/2011

**Definitions**

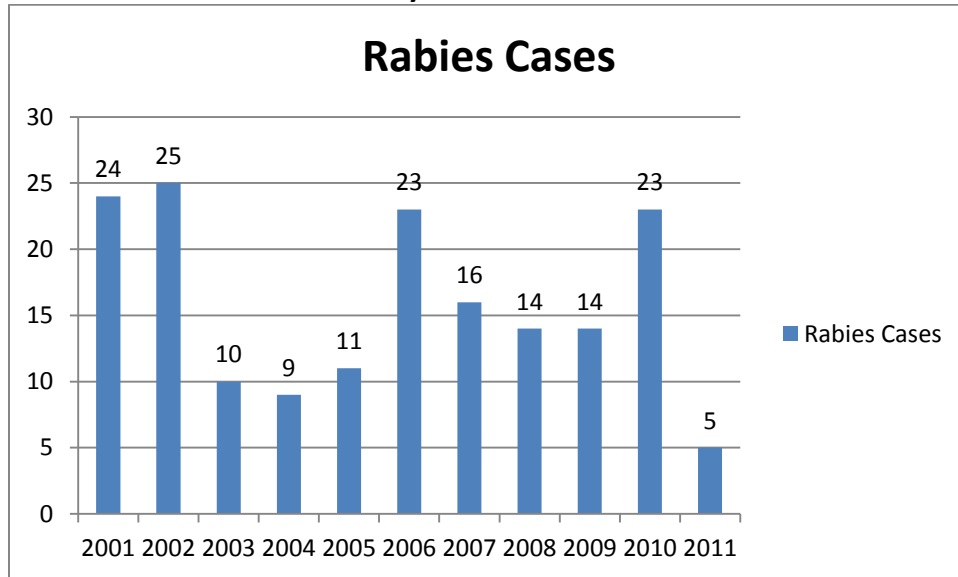
*Intake:* Animals admitted to the Animal Center. These include animals surrendered by the general public, picked up by Animal Control and animals born at the Center.

*Adoption:* Includes animals adopted to new homes and transferred to qualifying rescue groups.

*Reclaim:* Animals reclaimed by their owners after being found as strays or after completing quarantine period.

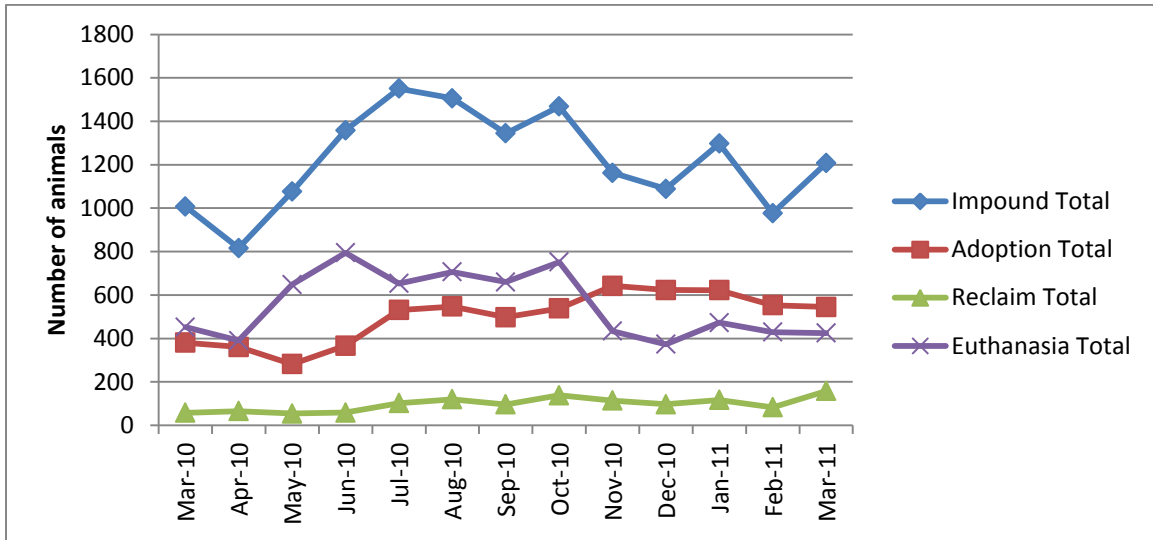
*Euthanasia:* Animals humanely euthanized at the Center. This includes animals that reside at the Animal Center and animals surrendered by their owner for euthanasia for medical or behavioral reasons.

**Rabies: Positive confirmed laboratory cases**



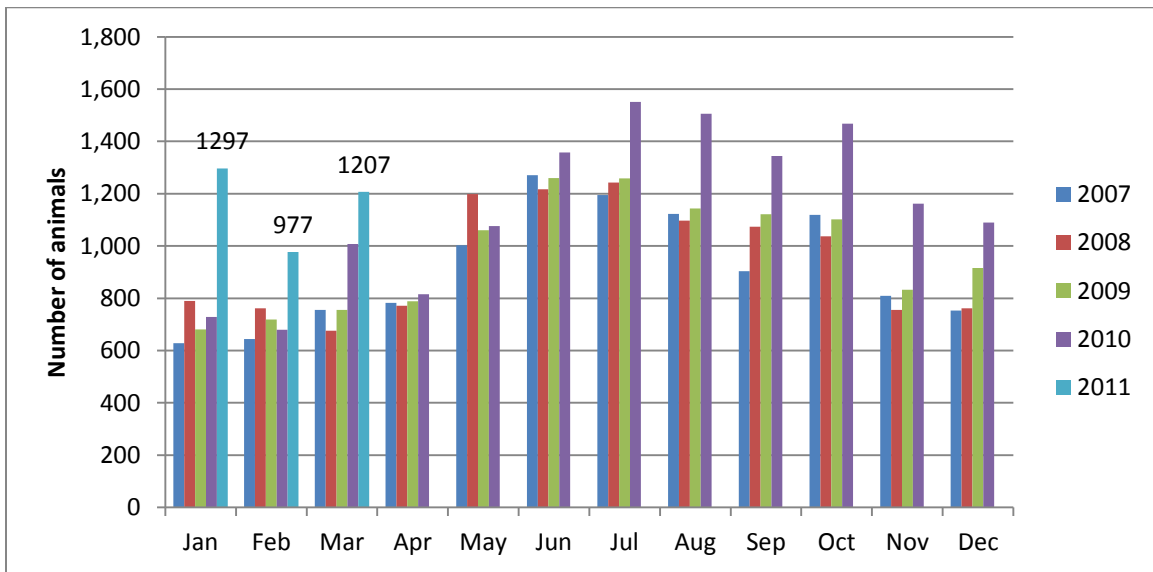
n=3 March 2011; year to date cases=5;

## Animal Center Statistical Summary



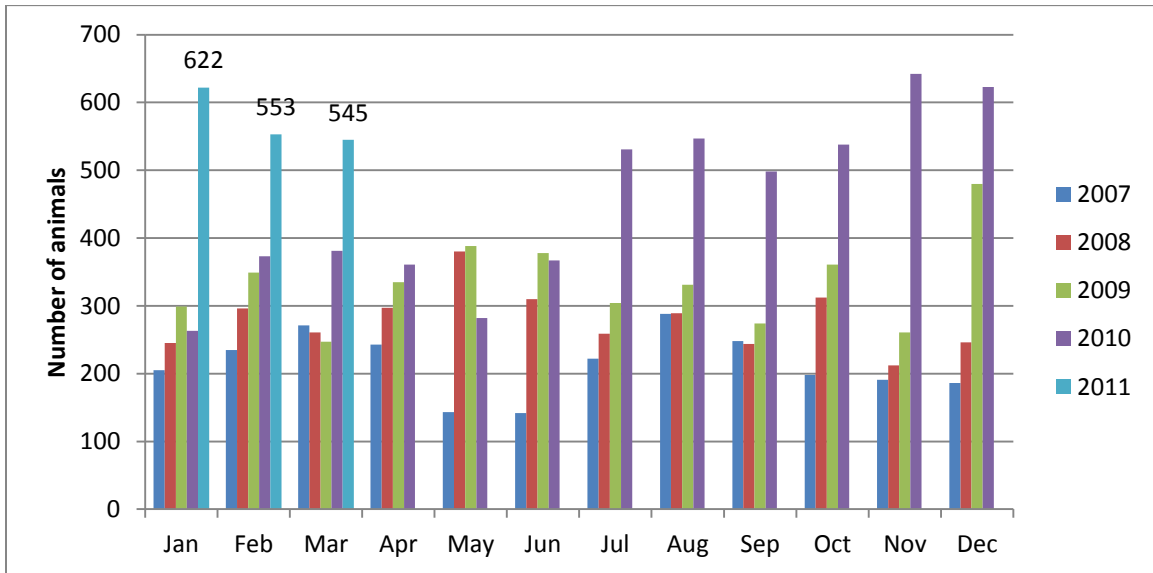
**Ebb and Flow of animal intake:** As depicted above, animal intake increases significantly in the warm months and drops in the cold months. This is typically associated with an increase in puppy and kitten litters in warm months. Adoptions do not normally increase to match the increase in intake so euthanasia rates can increase with intake. Over the past two months, adoptions and transfers have increased and euthanasia has decreased significantly, as seen above as the adoption line crosses and stays above the euthanasia line.

## Animal Center Intake monthly comparison



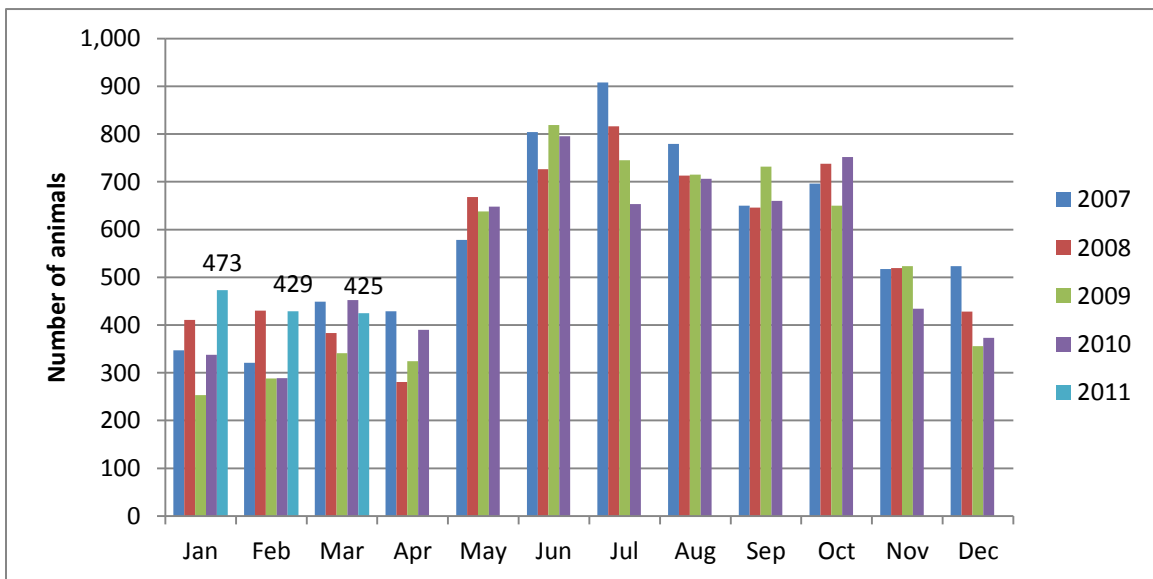
*n=1207; Intake is 44% higher than March 2010.*

### Adoption/Transfer Monthly Comparison



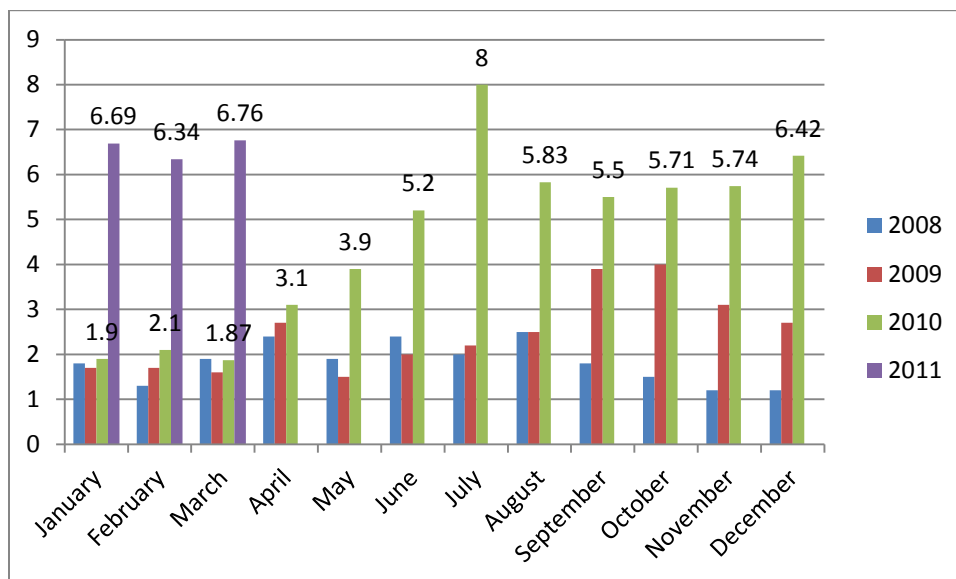
*n=545; data represents a combination of typical adoptions to new families and transfers to partner rescue groups; 43% increase in adoptions over March last year.*

### Euthanasia monthly comparison



*n=425; the euthanasia numbers are 6% lower than this month last year.*

## Volunteer hours by FTE



*n=6.76 FTEs; Volunteers logged enough hours this month to equal 6.76 extra full time employees. This includes dog walking, socialization, off-site events and work promoting animals in the community, just to name a few.*

**Wake County Animal Center  
Statistical Report**

**Date Range: July 1-March 31**

**Date Prepared:**

**4/1/2011**

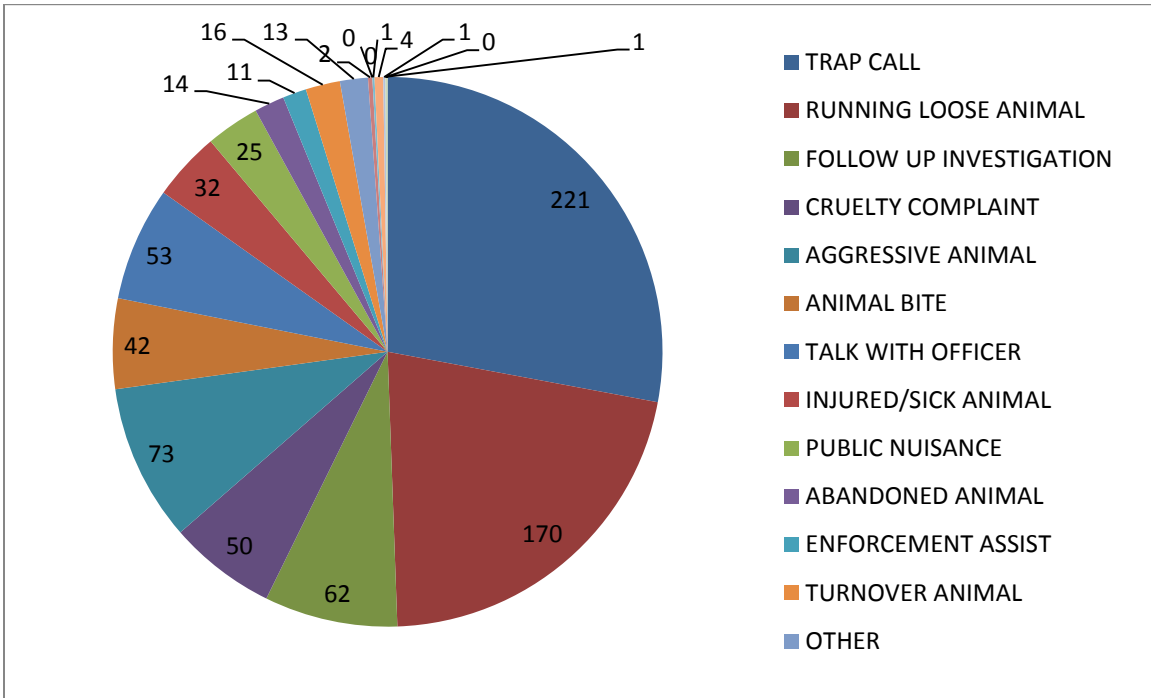
	<b>YTD FY09</b>	<b>Percent</b>	<b>YTD FY10</b>	<b>Percent</b>	<b>YTD FY11</b>	<b>Percent</b>	<b>March</b>	<b>Percent</b>
Intake Dog	3954		4108		5721		707	
Intake Cat	3848		4340		5384		445	
Intake Other	315		213		438		55	
<b>Intake Total</b>	<b>8117</b>		<b>8661</b>		<b>11543</b>		<b>1207</b>	
Adoption Dog	1333	34%	1440	35%	2317	40.50%	285	40.31%
Adoption Cat	514	13%	712	16%	1273	23.64%	129	28.99%
Adoption Other	45	14%	92	43%	104	23.74%	0	0.00%
<b>Adoption Total</b>	<b>1892</b>	<b>23%</b>	<b>2244</b>	<b>26%</b>	<b>3694</b>	<b>32.00%</b>	<b>414</b>	<b>34.30%</b>
Transfer Dog	326	8%	588	14%	787	13.76%	93	13.15%
Transfer Cat	98	3%	169	4%	534	9.92%	19	4.27%
Transfer Other	138	44%	40	19%	80	18.26%	19	34.55%
<b>Transfer Total</b>	<b>562</b>	<b>7%</b>	<b>797</b>	<b>9%</b>	<b>1401</b>	<b>12.14%</b>	<b>131</b>	<b>10.85%</b>
Reclaim Dog	490	12%	498	12%	903	15.78%	136	19.24%
Reclaim Cat	57	1%	65	1%	117	2.17%	21	4.72%
Reclaim Other	2	1%	6	3%	7	1.60%	1	1.82%
<b>Reclaim Total</b>	<b>549</b>	<b>7%</b>	<b>569</b>	<b>7%</b>	<b>1027</b>	<b>8.90%</b>	<b>158</b>	<b>13.09%</b>
Euth Dog	1528	39%	1391	34%	1450	25.35%	195	27.58%
Euth Cat	3121	81%	3353	77%	3367	62.54%	212	47.64%
Euth Other	95	30%	40	19%	187	42.69%	18	32.73%
<b>Euth Total</b>	<b>4744</b>	<b>58%</b>	<b>4784</b>	<b>55%</b>	<b>5004</b>	<b>43.35%</b>	<b>425</b>	<b>35.21%</b>

	<b>Total #</b>	<b>Percentage</b>
Change in intake from FY10 to FY11	2882	33%
Change in adoptions from FY10 to FY11	1450	65%
Change in transfers from FY10 to FY11	604	76%
Change in euthanasia from FY10 to FY11	220	5%
Change in total cat live releases	978	103%
Change in cat live release percentage		14%
Change in total dog live releases	1481	59%
Change in dog live release percentage		9%

**NOTE: A decrease in total numbers or percentage will show a (-) symbol and be in red. Increases will be in blue and will not show a (+) symbol.**

**NOTE: The first three columns show three different fiscal years, using the date range indicated on the top left corner of the report. Each month, we will compare the same date range across the current and past two fiscal years for equal comparison.**

### Animal Control Field Data



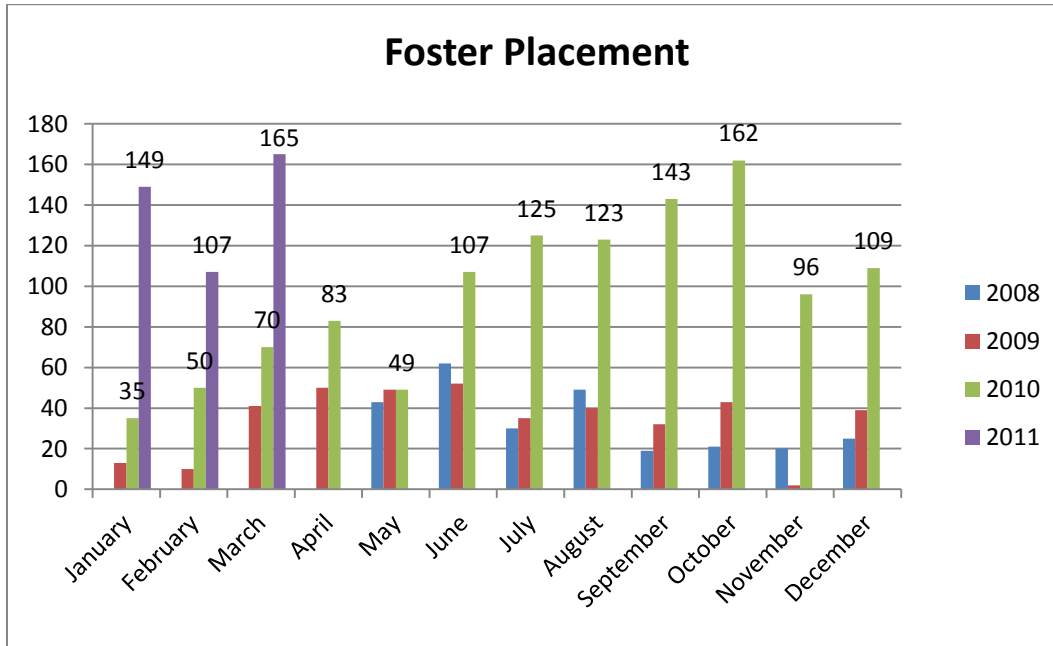
Wake County Animal Control responded to 791 requests for service in March 2011. Normally, Animal Control sees a decrease in requests for service when the temperatures decrease. Very few litters are born in the winter, reducing the amount of animals in the community. Complaints for stray or loose animals continues to contribute to about half of all calls.

## Foster and Rescue Report

During the month of March, one hundred sixty-five (165) animals were placed into foster care.

During the month of March, one hundred thirty-one (131) animals were placed into the care of partnering rescue groups and adoption centers.

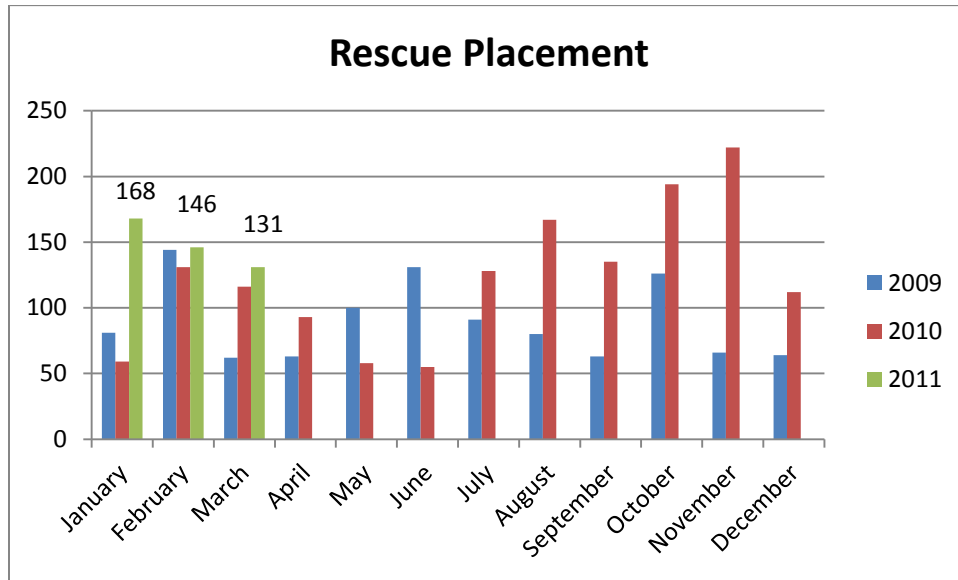
### Year over year comparison: Foster Placement



*n=165; The number of animals placed into foster care during March 2011 is the highest on record. More animals were placed into foster care this month than in any other month since the inception of the program, which speaks to the continued growth and success of the Foster program and highlights the life-saving actions taken by the Center. Additionally, the high number signifies the start of puppy and kitten “season” as the number of litters arriving at the Center or being born while in foster care continues to rise.*

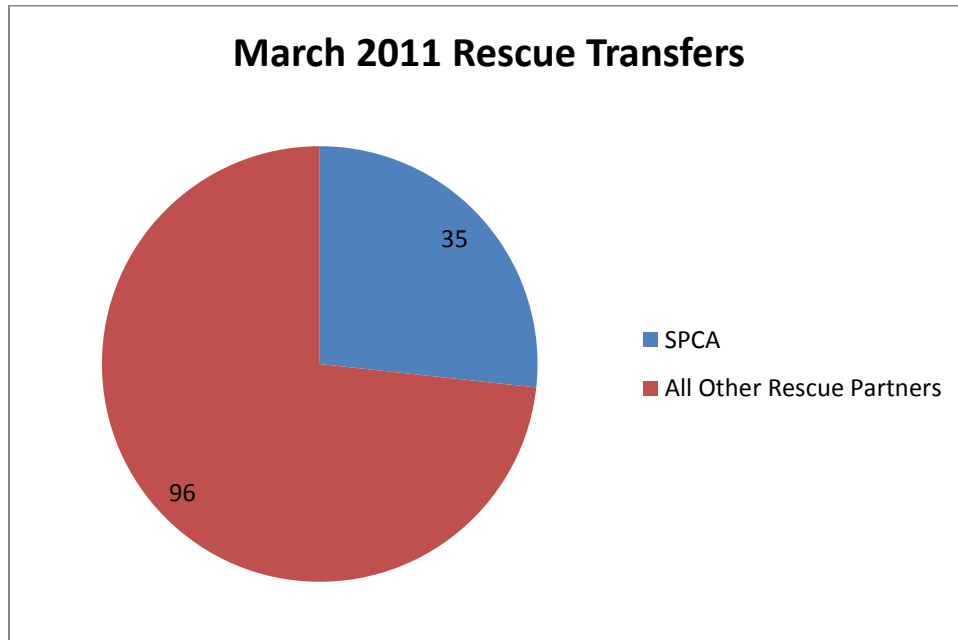


**Year over year comparison: Rescue Placement**



*n=131; The Center is experiencing a decrease, month-over-month since January 2011, in the number of animals placed with partnering rescue organizations.*

**Distribution of Rescue Placement**



*The SPCA of Wake County is our largest rescue partner, but we continue to have exceptional support from all of our rescue partners.*

## Top Canine and Feline Transfers

Shelter/Rescues	Dogs Transferred
SPCA of Wake County	21
Fallen Angels Pet Rescue	16
Paw Prints Animal Rescue	12
Falkner Animal Rescue and Referral	9
Hav-A-Hart Pet Rescue	6
German Sheperd Rescue	5
HEART	4
Mitchell Mill Animal Hospital	3
A New Leash On Life	3
Lab Rescue of NC	2
Saving Grace for Animals	2
Sound Pet Animal Rescue and Referral	1
Marley's Cat Tales & Dogs Too	1
Pet & People Foundation	1

Shelters/Rescues	Cats Transferred
SPCA of Wake County	14
Pet & People Foundation	2
Paw Prints Animal Rescue	1
Marley's Cat Tales & Dogs Too	1
Blind Cat Rescue and Sanctuary	1