

Wake County

# Animal Care, Control and Adoption

March 2012 Monthly Report



**Definitions**

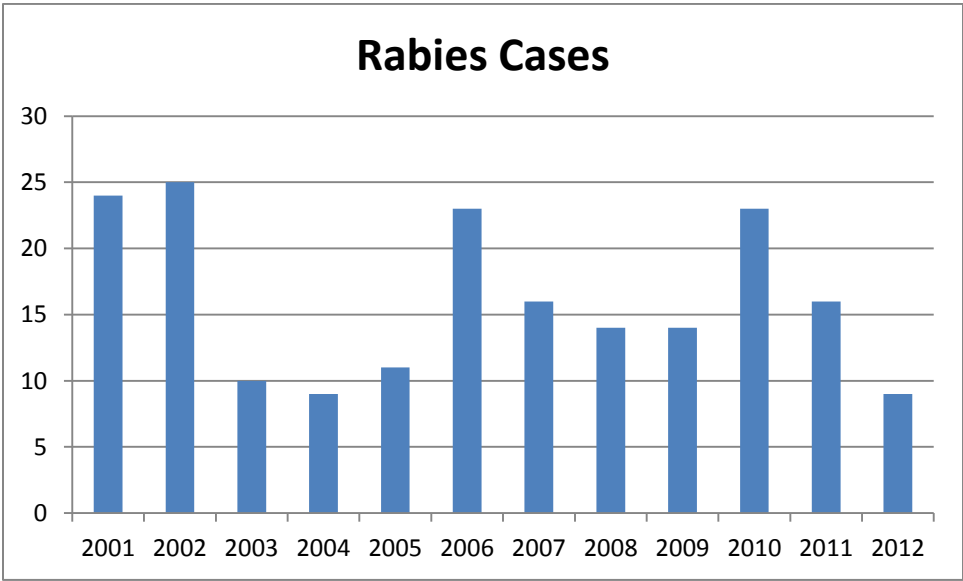
*Intake:* Animals admitted to the Animal Center. These include animals surrendered by the general public, picked up by Animal Control and animals born at the Center.

*Adoption:* Includes animals adopted to new homes and transferred to qualifying rescue groups.

*Reclaim:* Animals reclaimed by their owners after being found as strays or after completing quarantine period.

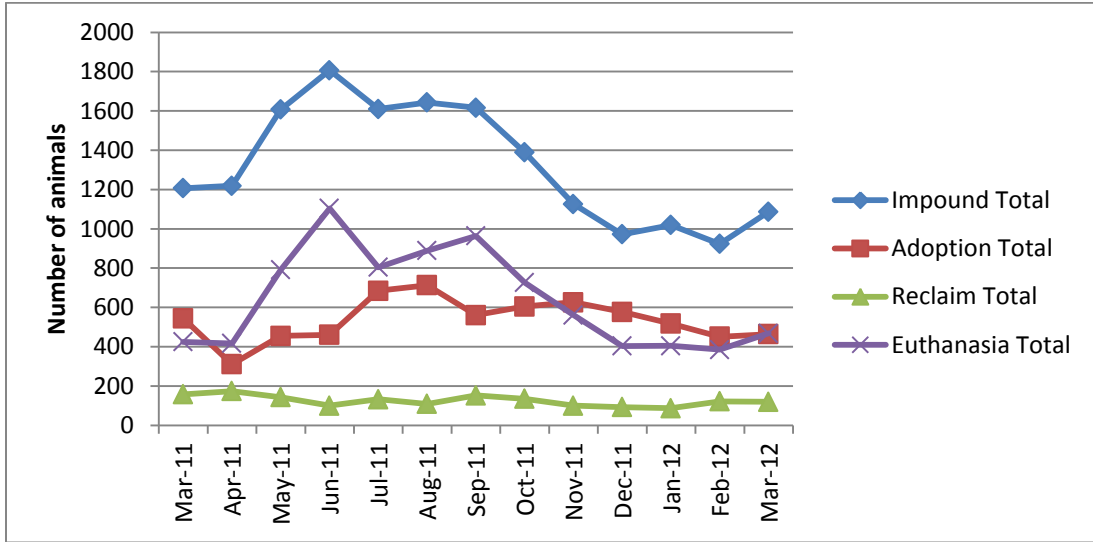
*Euthanasia:* Animals humanely euthanized at the Center. This includes animals that reside at the Animal Center and animals surrendered by their owner for euthanasia for medical or behavioral reasons.

**Rabies: Positive confirmed laboratory cases**



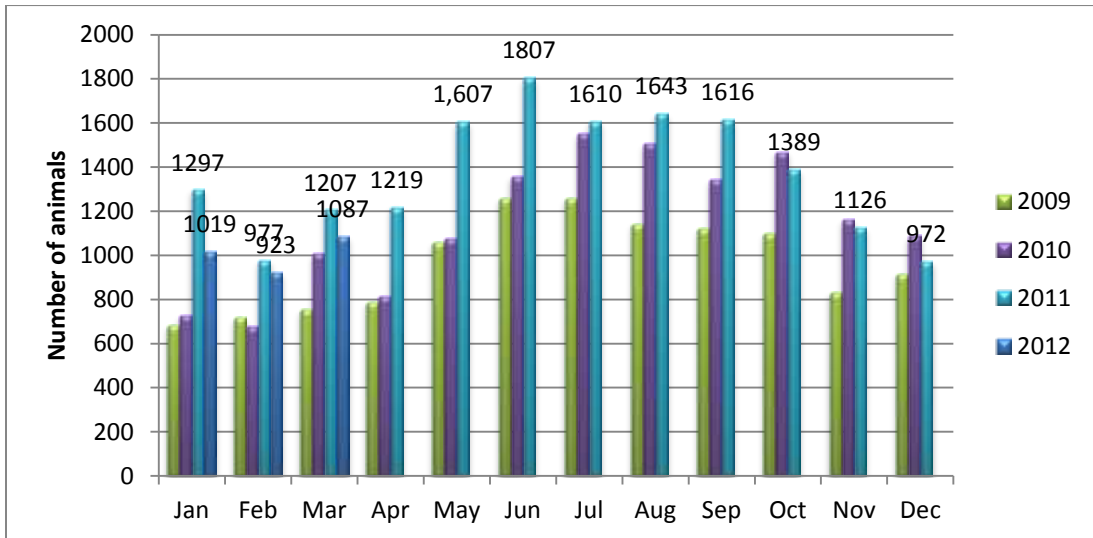
n=9; 1 case in the month of March 2012; year to date cases=9.

## Animal Center Statistical Summary



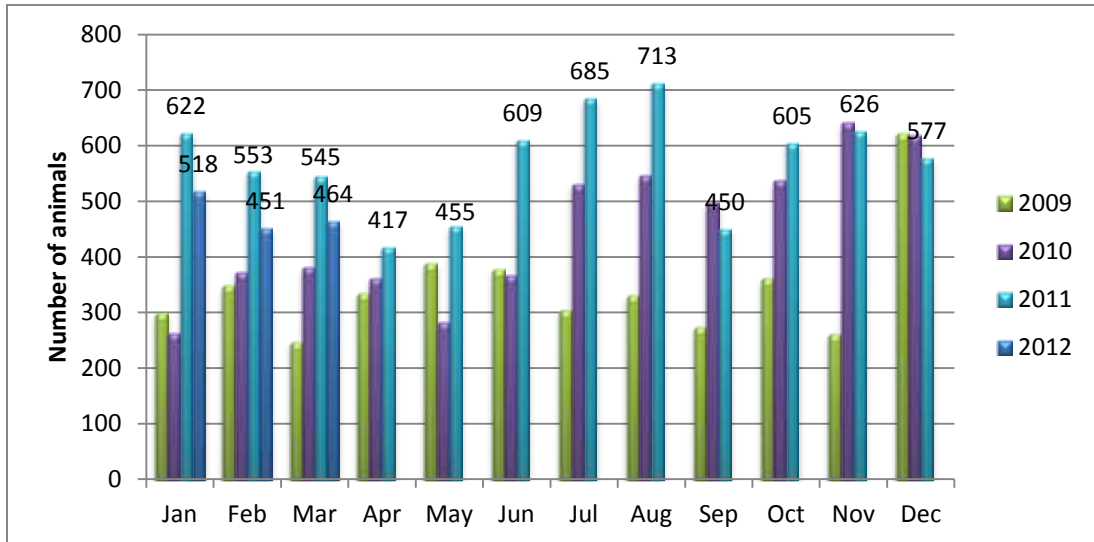
**Ebb and Flow of animal intake:** As depicted above, animal intake increases significantly in the warm months and drops in the cold months. This is typically associated with an increase in puppy and kitten litters in warm months. Adoptions do not normally increase to match the increase in intake so euthanasia rates can increase with intake.

## Animal Center Intake monthly comparison



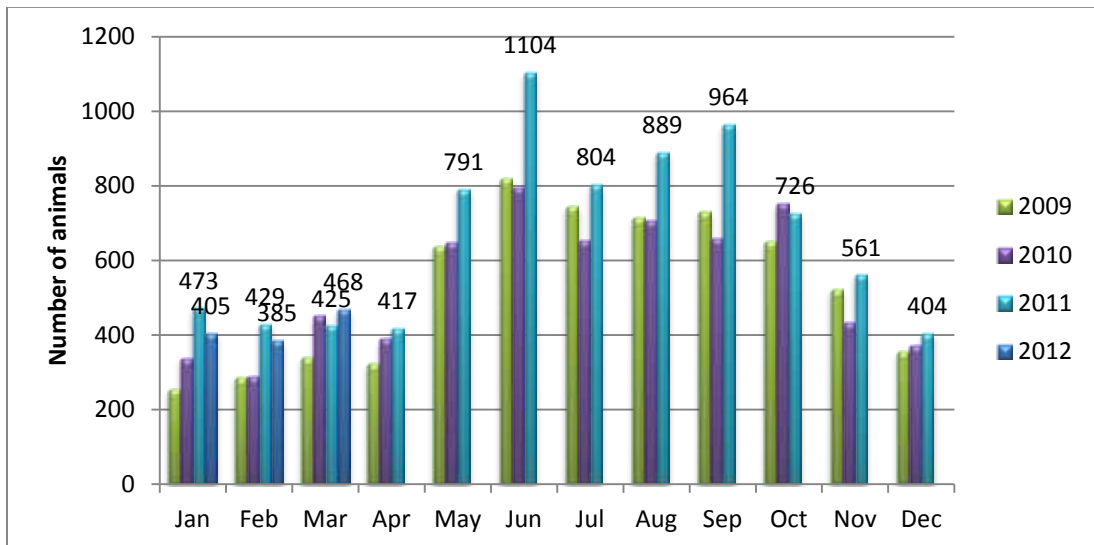
*n=1087; Intake is 10% lower than March 2011.*

### Adoption/Transfer Monthly Comparison



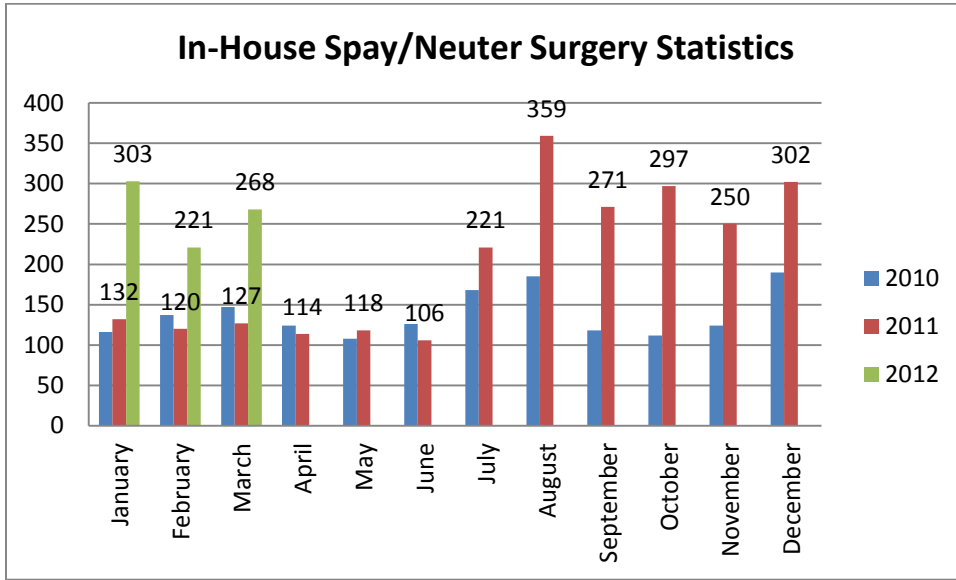
*n=464; data represents a combination of typical adoptions to new families and transfers to partner rescue groups; 14.9% decrease in adoptions/transfers over March last year.*

### Euthanasia monthly comparison



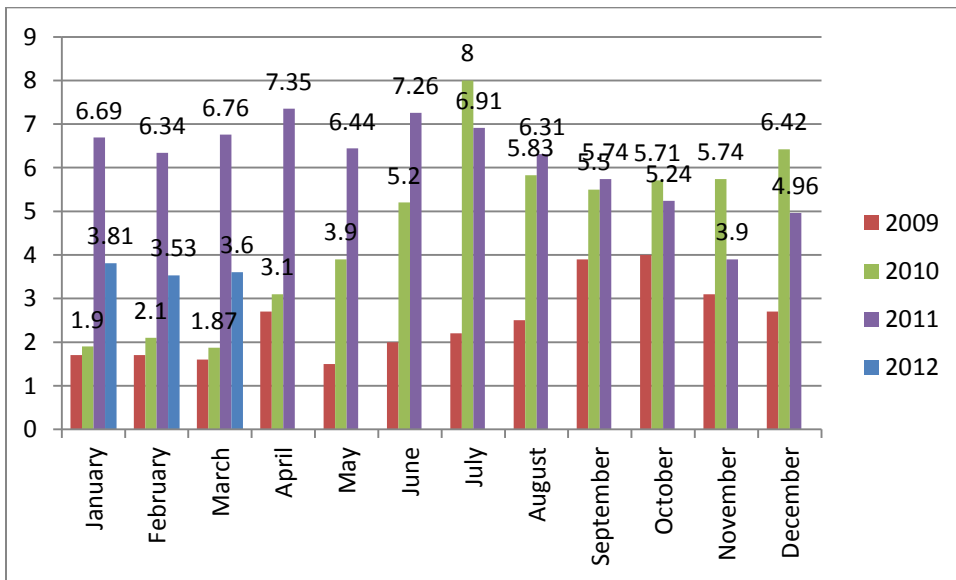
*n=468.*

**Spay/Neuter Surgeries monthly comparison**



*n=268; spay/neuter surgeries; Two hundred and sixty-eight (268) spay or neuter surgeries were performed during the month of March by the Center's in-house veterinary program. The surgery counts reflect only those surgeries performed in the Center, not those performed by third-party clinics in the community (SNAP, Saving Lives, Safe Care Feline Clinic).*

**Volunteer hours by FTE**



*n=3.60 FTEs; Volunteers logged enough hours this month to equal 3.60 extra full time employees. This includes dog walking, socialization, off-site events and work promoting animals in the community, just to name a few.*

## Wake County Animal Center Statistical Report

Date Range: July 1, 2011 - March 31, 2012

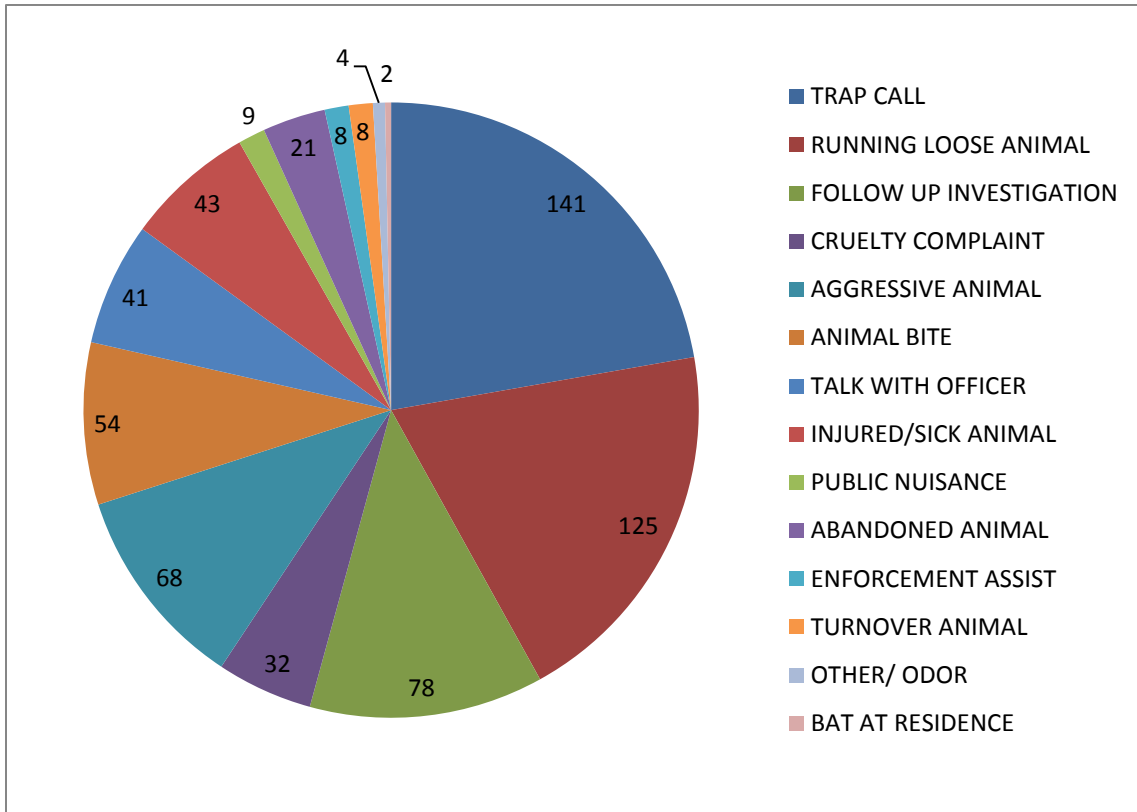
Date Prepared: 04/10/2012

	YTD FY09	%	YTD FY10	%	YTD FY11	%	YTD FY12	%	MTD	%
Intake Dog	3954		4108		5712		5693		648	
Intake Cat	3847		4340		5377		5123		377	
Intake Other	315		213		433		507		62	
<b>Intake Total</b>	<b>8116</b>		<b>8661</b>		<b>11522</b>		<b>11323</b>		<b>1087</b>	
Adoption Dog	1327	34%	1445	35%	2317	41%	2390	42.0%	273	42.1%
Adoption Cat	508	13%	693	16%	1271	24%	1374	26.8%	96	25.5%
Adoption Other	45	21%	93	44%	104	24%	158	31.2%	17	27.4%
<b>Adoption Total</b>	<b>1880</b>	<b>23%</b>	<b>2231</b>	<b>26%</b>	<b>3692</b>	<b>32%</b>	<b>3922</b>	<b>34.6%</b>	<b>386</b>	<b>35.5%</b>
Transfer Dog	326	8%	588	14%	787	14%	651	11.4%	50	7.7%
Transfer Cat	98	3%	169	4%	534	10%	371	7.2%	27	7.2%
Transfer Other	138	44%	40	19%	83	19%	46	9.1%	1	1.6%
<b>Transfer Total</b>	<b>562</b>	<b>7%</b>	<b>797</b>	<b>9%</b>	<b>1404</b>	<b>12%</b>	<b>1068</b>	<b>9.4%</b>	<b>78</b>	<b>7.2%</b>
Reclaim Dog	488	12%	495	12%	900	16%	923	16.2%	102	15.7%
Reclaim Cat	57	1%	65	1%	117	2%	124	2.4%	18	4.8%
Reclaim Other	2	1%	6	3%	7	2%	6	1.2%	0	0.0%
<b>Reclaim Total</b>	<b>547</b>	<b>7%</b>	<b>566</b>	<b>7%</b>	<b>1024</b>	<b>9%</b>	<b>1053</b>	<b>9.3%</b>	<b>120</b>	<b>11.0%</b>
Euth Dog	1543	39%	1404	34%	1462	26%	1923	33.8%	242	37.3%
Euth Cat	3131	81%	3365	78%	3382	63%	3481	67.9%	204	54.1%
Euth Other	96	30%	43	20%	194	45%	233	46.0%	22	35.5%
<b>Euth Total</b>	<b>4770</b>	<b>59%</b>	<b>4812</b>	<b>56%</b>	<b>5038</b>	<b>44%</b>	<b>5637</b>	<b>49.8%</b>	<b>468</b>	<b>43.1%</b>

	Total	%
Change in intake from FY11 to FY12	-199	-2%
Change in adoptions from FY11 to FY12	230	6%
Change in transfers from FY11 to FY12	-336	-24%
Change in euthanasia from FY11 to FY12	599	12%
	-	-
Change in total cat live releases	-53	2.8%
	-	-
Change in total dog live releases	-40	1.0%

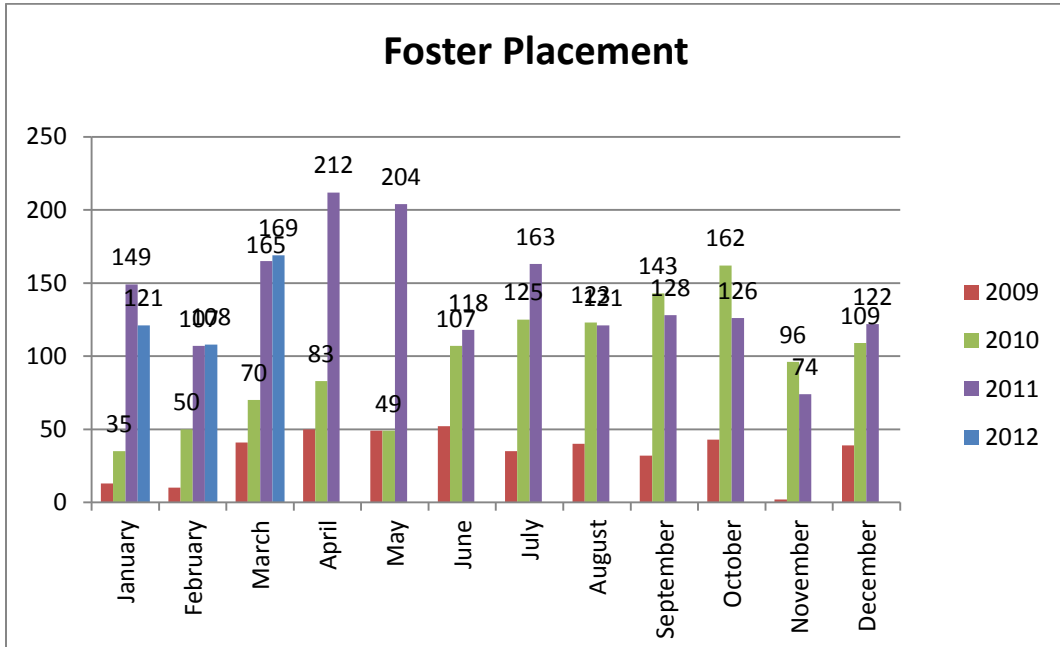
**NOTE: A decrease in total numbers or percentage will show a (-) symbol and be in red. Increases will be in blue and will not show a (+) symbol. NOTE: The first three columns show three different fiscal years, using the date range indicated on the top left corner of the report. Each month, we will compare the same date range across the current and past three fiscal years for equal comparison.**

### Animal Control Field Data



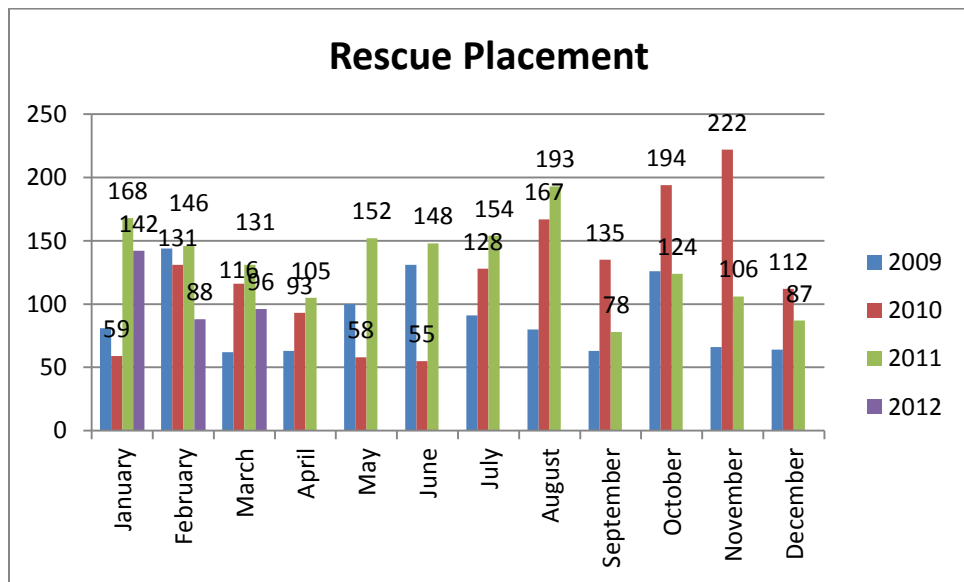
*n=647; Wake County Animal Control responded to 647 requests for service in March 2012. Complaints for stray or loose animals continues to contribute to about half of all calls.*

**Year over year comparison: Foster Placement**



*n=169; during the month of March, One hundred sixty-nine (169) animals were placed into foster care.*

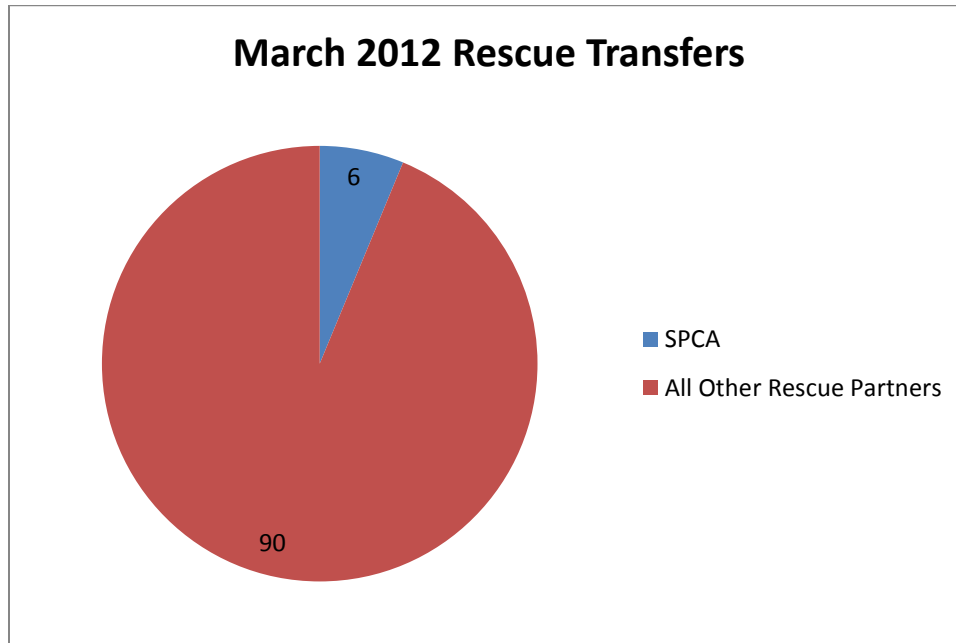
**Year over year comparison: Rescue Placement**



*n=96; Rescue placement is 27% lower than this month last year. During the month of March, Ninety-six (96) animals were placed into the care of partnering rescue groups and adoption centers.*



## Distribution of Rescue Placement



*n=96; WCAC transferred 6 animals to the SPCA of Wake County and 90 animals to our other rescue partners.*

## Top Canine and Feline Transfers

March 2012	Canine
Rescue Ur Forever Friend	11
2 Paws Up	9
Mitchell Mill Animal Hospital	4
Dachshund Rescue of North America	4
SPCA of Wake County	3
Best Friend Pet Adoption	2

March 2012	Feline
SAFE Haven for Cats	15
Goathouse Refuge	6
SPCA of Wake County	3
2 Paws Up	1
Atheneus Humanities Foundation	1
Siamese Rescue	1