



## Wake County Animal Center

March 2016  
Monthly Report



### Landfill Dogs by Shannon Johnstone

The Wake County Animal Center serves approximately 13,000 - 15,000 animals each year. Through the hard work of our dedicated staff, volunteers, fosters and transfer partners, we continue to improve the lives of the animals in our care.

Please check out our website at [www.wakegov.com/pets](http://www.wakegov.com/pets) for upcoming events, adoption specials and opportunities for you to contribute to the animals in Wake County.

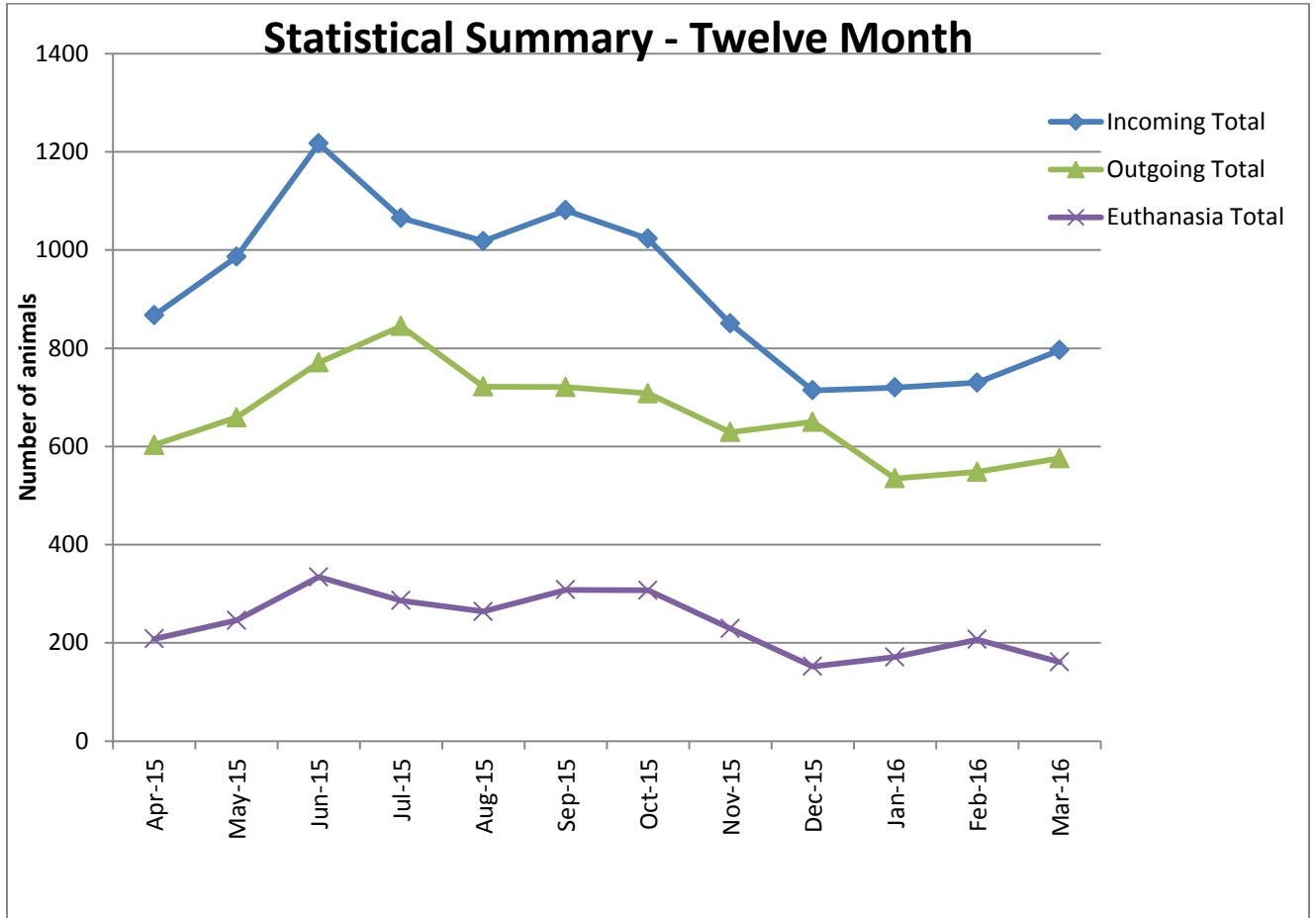
### **Mission Statement**

Determined to make a difference for the animals and citizens of Wake County through education, adoption, enforcement and community partnership.



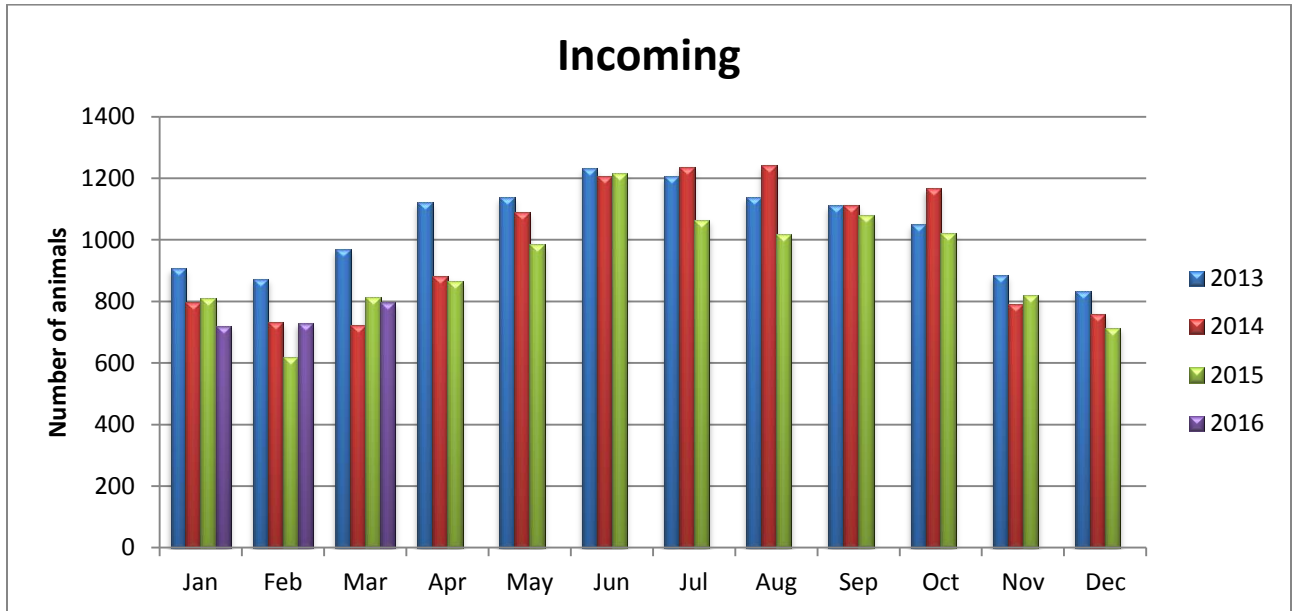
## Animal Center Statistical Summary

This chart compares all of our incoming animals, outgoing animals (which includes adoption, reclaim by owner and transfer to transfer partners) and euthanasia.



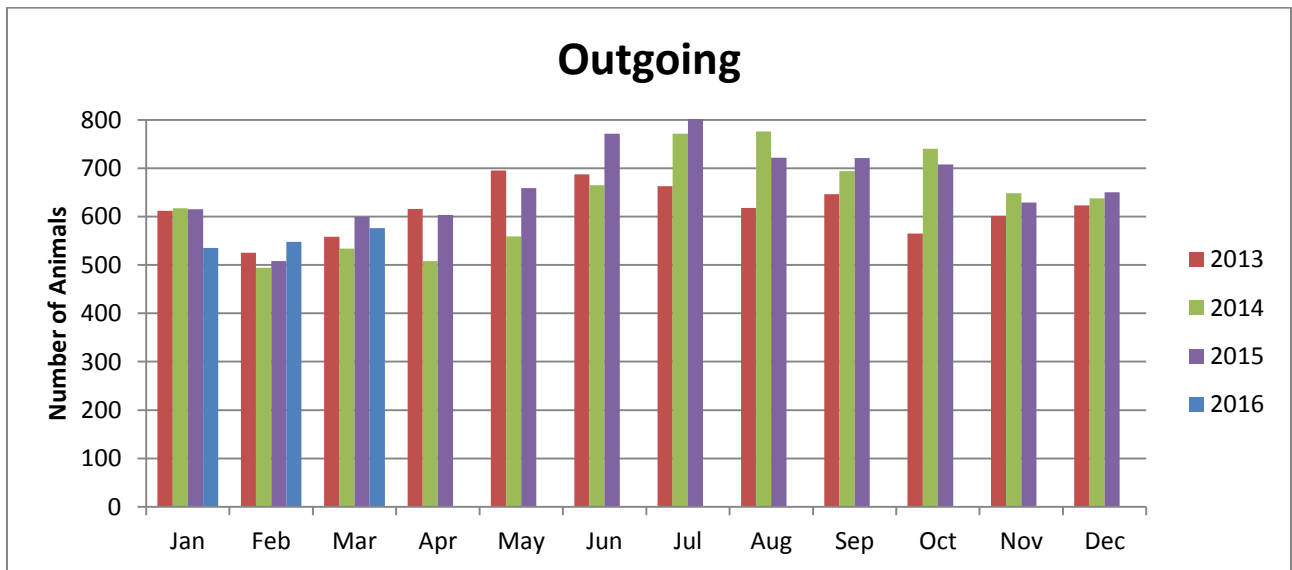
**Incoming Animals Monthly Comparison**

Incoming animals include all animals that enter the Wake County Animal Center either through our front desk or by Animal Control.



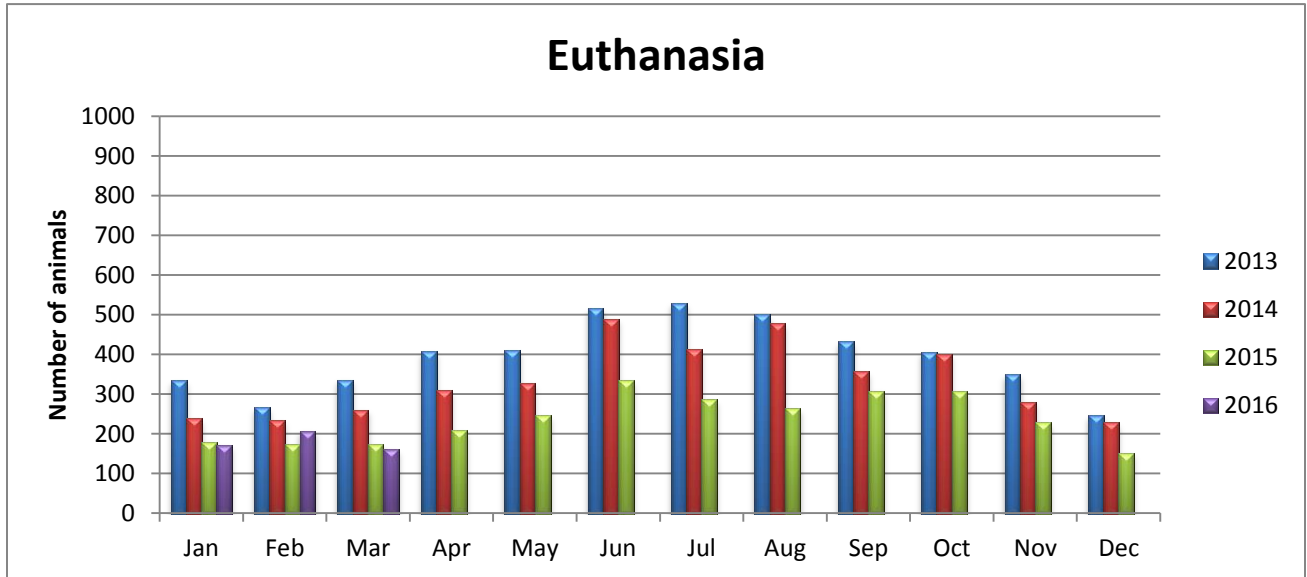
**Outgoing Animals Monthly Comparison**

Outgoing animals include: adoption, reclaim to owner, transfer to transfer partner



## Euthanasia Monthly Comparison

Incoming animals may be euthanized for space, health or temperament. We also provide owner requested euthanasia to the public.



## Wake County Animal Center Statistical Report

This report shows the current report month statistics and compares fiscal year to date statistics for the current fiscal year and the prior three fiscal years.

### Wake County Animal Center Statistical Report

Date Range: July 1, 2015 - March 31, 2016						Date Prepared: 4/11/2016				
	YTD FY13	%	YTD FY14	%	YTD FY15	%	YTD FY16	%	MTD FY16	%
Intake Dog	5180		4263		4409		4019		446	
Intake Cat	4672		3838		3767		3673		313	
Intake Other	461		351		376		304		37	
<b>Intake Total</b>	<b>10313</b>		<b>8452</b>		<b>8552</b>		<b>7996</b>		<b>796</b>	
Adoption Dog	2099	40.5%	1872	43.9%	1797	40.8%	1557	38.7%	140	31.4%
Adoption Cat	1307	28.0%	1311	34.2%	1162	30.8%	1258	34.2%	61	19.5%
Adoption Other	113	24.5%	119	33.9%	109	29.0%	125	41.1%	15	40.5%
<b>Adoption Total</b>	<b>3519</b>	<b>34.1%</b>	<b>3302</b>	<b>39.1%</b>	<b>3068</b>	<b>35.9%</b>	<b>2940</b>	<b>36.8%</b>	<b>216</b>	<b>27.1%</b>
Transfer Dog	629	12.1%	760	17.8%	961	21.8%	930	23.1%	119	26.7%
Transfer Cat	218	4.7%	460	12.0%	931	24.7%	1058	28.8%	115	36.7%
Transfer Other	101	21.9%	33	9.4%	94	25.0%	73	24.0%	5	13.5%
<b>Transfer Total</b>	<b>948</b>	<b>9.2%</b>	<b>1253</b>	<b>14.8%</b>	<b>1986</b>	<b>23.2%</b>	<b>2061</b>	<b>25.8%</b>	<b>239</b>	<b>30.0%</b>
Reclaim Dog	851	16.4%	757	17.8%	836	19.0%	838	20.9%	113	25.3%
Reclaim Cat	91	1.9%	97	2.5%	103	2.7%	106	2.9%	8	2.6%
Reclaim Other	24	5.2%	9	2.6%	6	1.6%	3	1.0%	0	0.0%
<b>Reclaim Total</b>	<b>969</b>	<b>9.4%</b>	<b>863</b>	<b>10.2%</b>	<b>945</b>	<b>11.1%</b>	<b>947</b>	<b>11.8%</b>	<b>121</b>	<b>15.2%</b>
Euth Dog	1519	29.3%	930	21.8%	857	19.4%	694	17.3%	68	15.2%
Euth Cat	3127	66.9%	2098	54.7%	1691	44.9%	1291	35.1%	84	26.8%
Euth Other	194	42.1%	170	48.4%	137	36.4%	95	31.3%	9	24.3%
<b>Euth Total</b>	<b>4840</b>	<b>46.9%</b>	<b>3198</b>	<b>37.8%</b>	<b>2685</b>	<b>31.4%</b>	<b>2080</b>	<b>26.0%</b>	<b>161</b>	<b>20.2%</b>

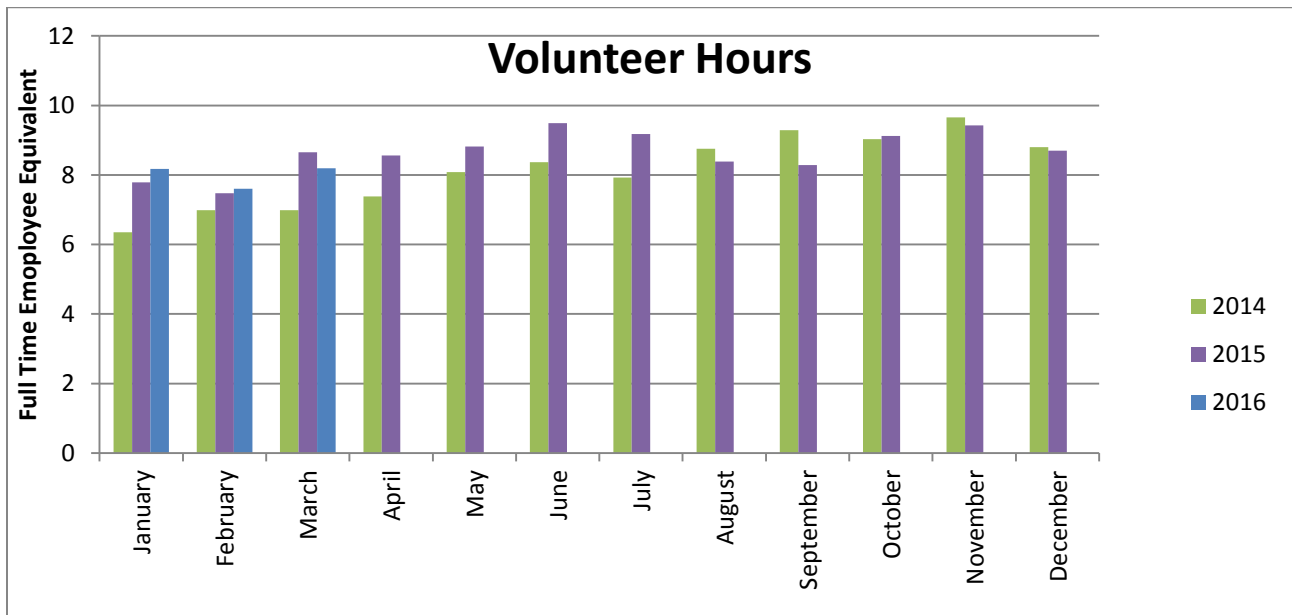
	<b>Total</b>	<b>%</b>
Change in intake from FY15 to FY16	<b>-556</b>	<b>-7%</b>
Change in adoptions from FY15 to FY16	<b>-128</b>	<b>-4%</b>
Change in transfers from FY15 to FY16	<b>75</b>	<b>4%</b>
Change in euthanasia from FY15 to FY16	<b>-605</b>	<b>-23%</b>
Change in total cat live releases	<b>226</b>	<b>10.3%</b>
Change in total dog live releases	<b>-269</b>	<b>-7.5%</b>

## Wake County Animal Center Volunteer Program

Volunteers are an integral part of the Enrichment Program for the Wake County Animal Center. Their roles include dog walking, socialization of the animals, assisting at off-site events, cat cuddling and promoting our animals in the community, to just name a few.

To learn more about volunteering at the Wake County Animal Center, please visit our Volunteer Page on our website at: <http://www.wakegov.com/pets/volunteer>

Not everyone can come to the Animal Center to interact with our animals directly. If this is you, you can support our Animal Center by raising community awareness of the animals for adoption at the Wake County Animal Center, collecting donations of treats from your local community or making financial donations to support our Enrichment Program, advanced medical care and other needs of the animals in our care. More information can be found at: <http://www.wakegov.com/pets/donations>

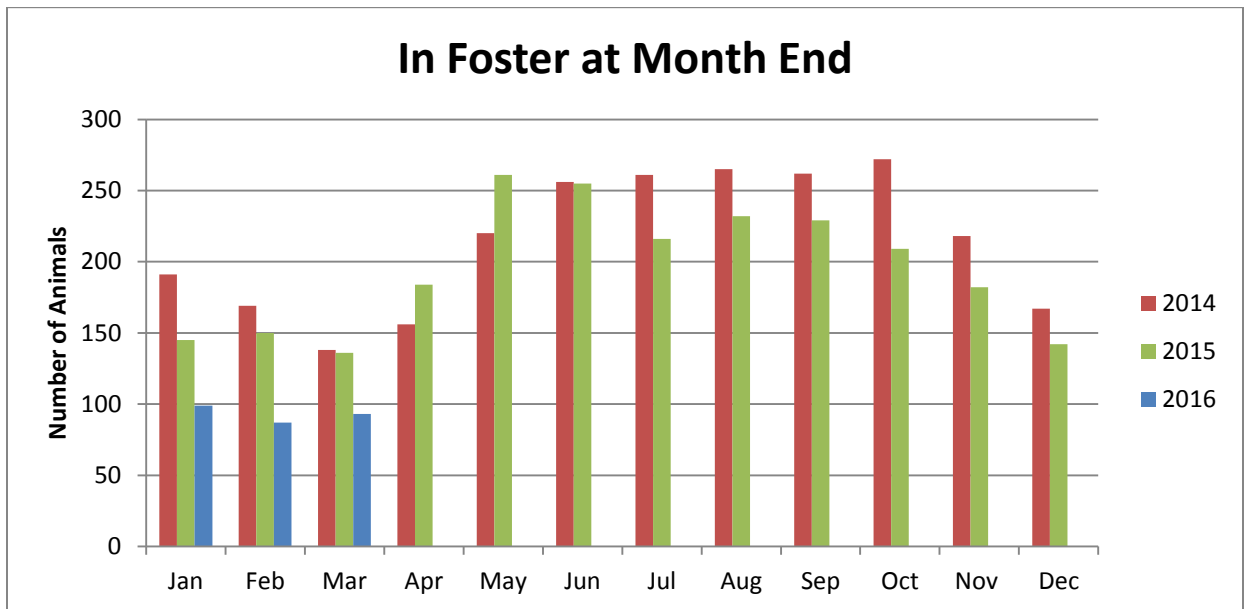


During the month of March, 2016, our volunteers logged a total amount of hours equivalent to an additional 8.19 full time employees. WOW! That's a lot of enrichment for our animals!

## Wake County Animal Center Foster Program

Foster parents are crucial to the lifesaving efforts of the Wake County Animal Center. Foster parents save two lives when they choose to foster – the foster they welcome into their home as well as the pet who just got that spot in our facility. Fosters take on our neediest animals – our bottle feeder kittens, pets that need a kind hand for socialization, as well as our animals that need ongoing medical care. Foster parents provide a loving home that enables these pets to find their forever home.

To learn more about becoming a Foster parent at the Wake County Animal Center, please visit our Foster Page on our website at: <http://www.wakegov.com/pets/foster>



At the end of March, 2016, there were 93 animals in foster care. Animals in foster care that are available for adoption can be found on our Adoption Gallery at: <http://www.wakegov.com/pets/adoptions>

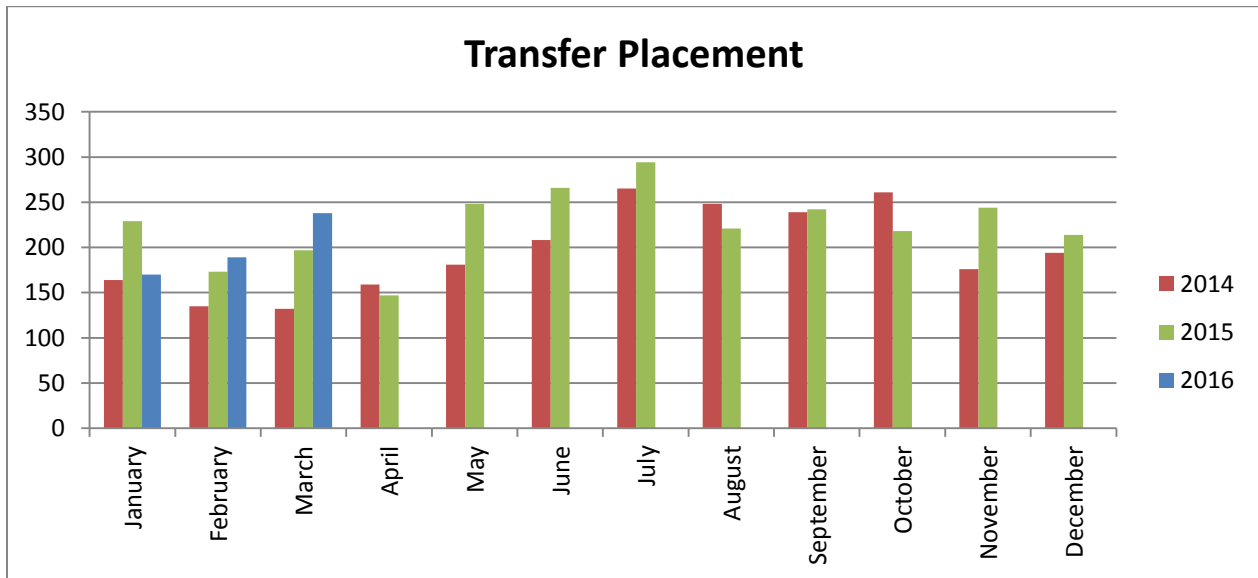


## Wake County Animal Center Transfer Program

Transfer Partners pull animals from the Wake County Animal Center into their rescue programs. Our Transfer Partners are both near and far. We are fortunate to have many Transfer Partners to help us with placement of our animals, some that need extensive socialization, training or medical care. They enable us to save more lives.

To learn more about becoming a Transfer Partner for the Wake County Animal Center, please visit Transfer Program Page on our website at:

<http://www.wakegov.com/pets/transfer>



During March, 2016, 238 animals were transferred out of the Wake County Animal Center to our Transfer Partners.

Thank you to all of our Transfer Partners that pulled animals from the Wake County Animal Center in March, 2016. Every single transfer is important!

Shelter / Rescue

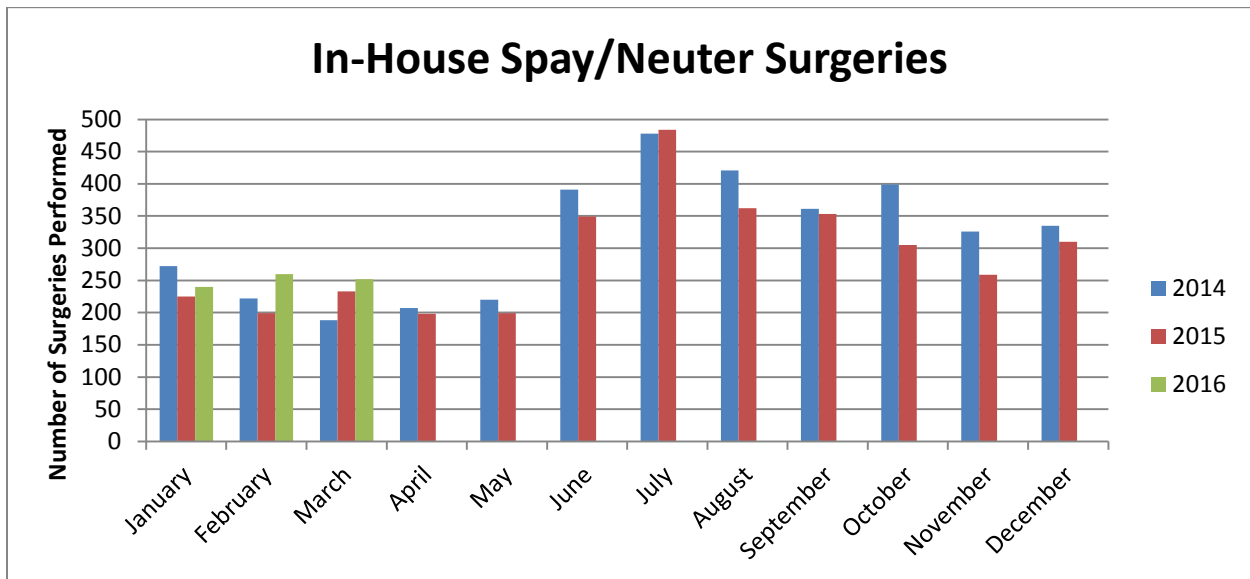
Monthly Totals

	Cat	Dog	Kitten	Puppy	Other
* Adopt Me Animal Rescue Inc.	-	1	-	-	-
* All Breed Animal Rescue of the Carolinas	-	3	-	-	-
* Alley Cats and Angels	1	-	4	-	-
* ASPCA	-	3	-	-	-
* Carolina Veterinary Assistance & Adoption	18	14	-	16	-
* Cause For PAWS Of NC	-	5	3	-	-
* Change of Heart Pit Bull Rescue	-	-	-	1	-
* Chico and Friends	1	-	-	-	-
* Critters 4 U Rescue	-	3	-	2	-
* Dog Warriors Rescue	-	2	-	-	-
* Fayetteville Animal Protection Society	1	1	-	-	-
* Feral Cat Friends Inc	1	-	-	-	-
* Ferret Guardian Rescue Haven	-	-	-	-	1
* Franklin County Humane Society	1	-	-	-	-
* Friends Fur Life K9 Rescue	-	3	-	3	-
* Happy Homes Animal Rescue Inc.	1	-	-	-	-
* Heart Rescue Group N.Y.	-	1	-	-	-
* Hope Animal Rescue	-	4	-	-	-
* Jesse'S Place/Ruf Creek Ranch Franicola	-	2	-	1	-
* Neuse River Golden Retriever Rescue	-	1	-	-	-
* Paw Prints Animal Rescue	-	1	-	-	-
* Paws 4-Ever	2	3	-	-	-
* Pet Adoption League of NY Inc.	-	1	-	-	-
* Rainbow Rescue (Love Mutts Rescue)	-	1	-	-	-
* SAFE Haven for Cats	40	-	1	-	-
* Second Chance Pet Adoptions	-	6	-	10	-
* Sound Pet Animal Rescue and Referral	-	1	-	-	-
* SPCA of Wake County	19	23	17	2	3
* Triangle Chance for All	-	-	-	-	1
* Wags Rescue And Referral	-	4	-	-	-
* WAKE TNR	5	-	-	-	-

## Wake County Animal Center Veterinary Program

Our Veterinary Program consists of a Chief Veterinarian, a Contract Surgeon and four veterinary technicians. This team is responsible for the overall medical care of all animals within the Wake County Animal Center.

Pet overpopulation is a major issue. One way to address this issue is to have your pets spayed or neutered. All dogs and cats adopted from the Wake County Animal Center are spayed or neutered prior to entering their new homes.



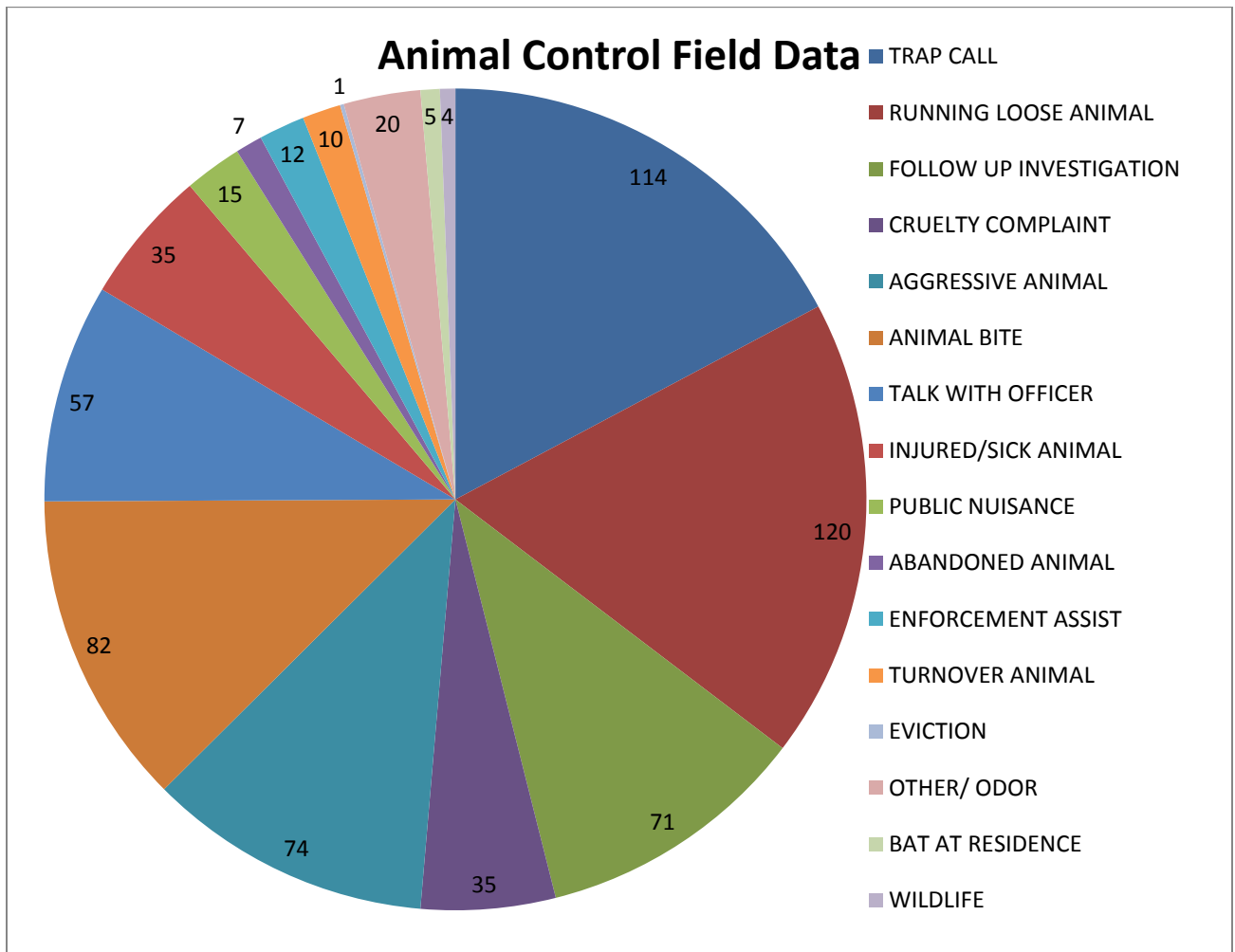
During March, 2016, 252 spay/neuter surgeries were performed at the Wake County Animal Center.

## Wake County Animal Control

Wake County Animal Control responds to all areas of Wake County except for the City of Raleigh, City of Garner, Town of Holly Springs and Town of Cary, which each have their own Animal Control Units.

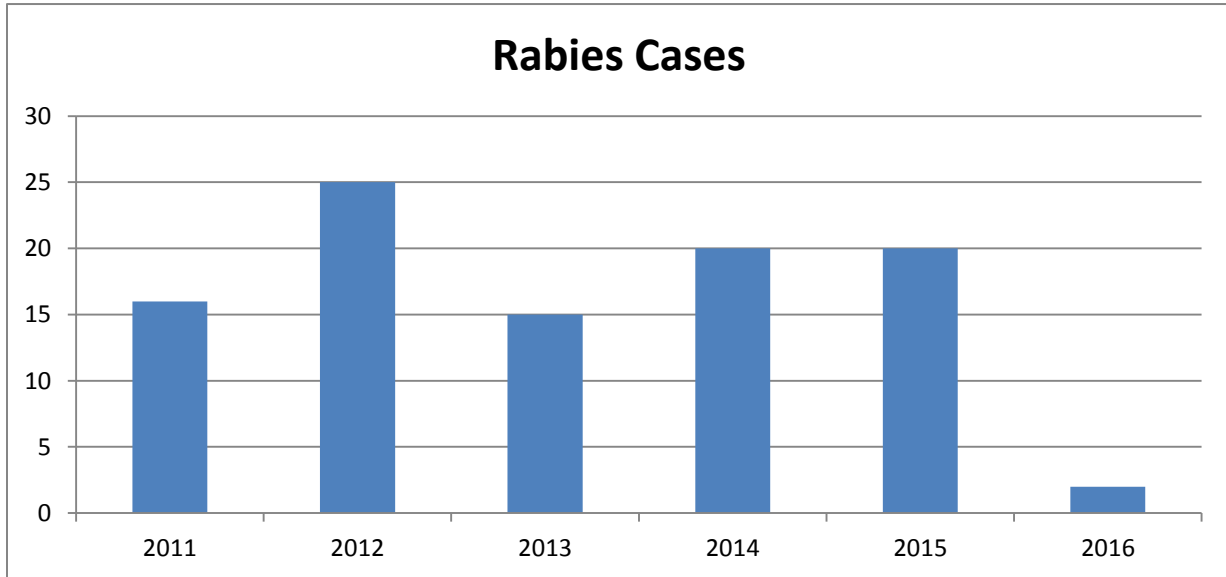
To learn more about Animal Control services within Wake County, please visit our Animal Control Page on our website at:

<http://www.wakegov.com/pets/health/Pages/animalcontrol.aspx>



Wake County Animal Control responded to 662 requests for service in March, 2016.

**Wake County Rabies Statistics**



During March, 2016, there was 1 confirmed case of rabies in Wake County. There have been a total of 3 confirmed cases of rabies in Wake County since January 1, 2016.