



## Definitions

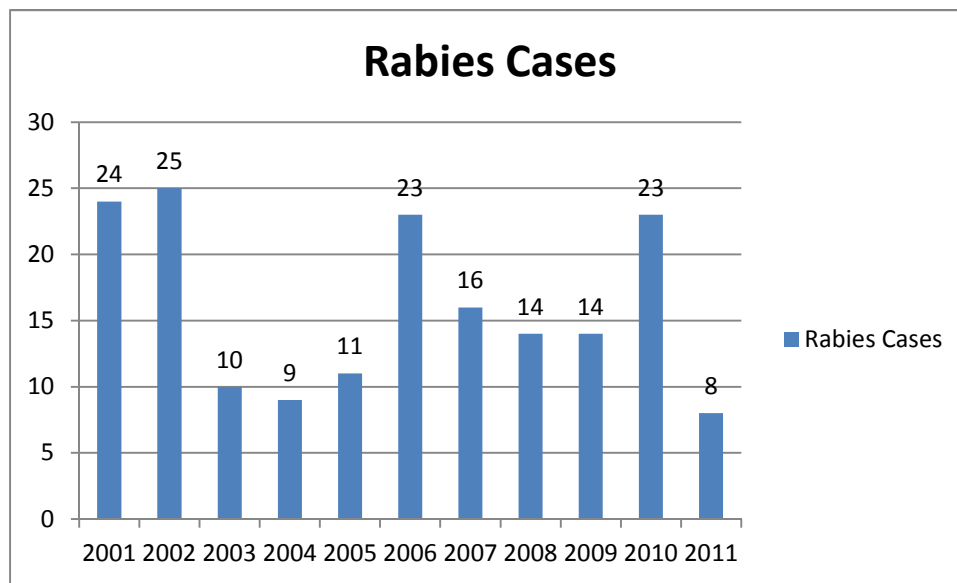
*Intake:* Animals admitted to the Animal Center. These include animals surrendered by the general public, picked up by Animal Control and animals born at the Center.

*Adoption:* Includes animals adopted to new homes and transferred to qualifying rescue groups.

*Reclaim:* Animals reclaimed by their owners after being found as strays or after completing quarantine period.

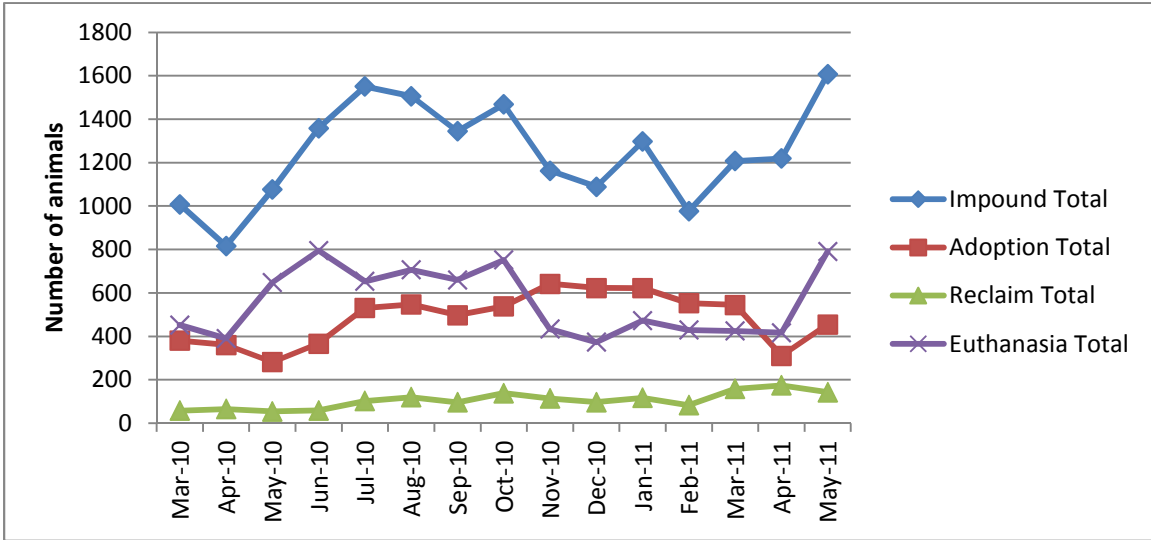
*Euthanasia:* Animals humanely euthanized at the Center. This includes animals that reside at the Animal Center and animals surrendered by their owner for euthanasia for medical or behavioral reasons.

## Rabies: Positive confirmed laboratory cases



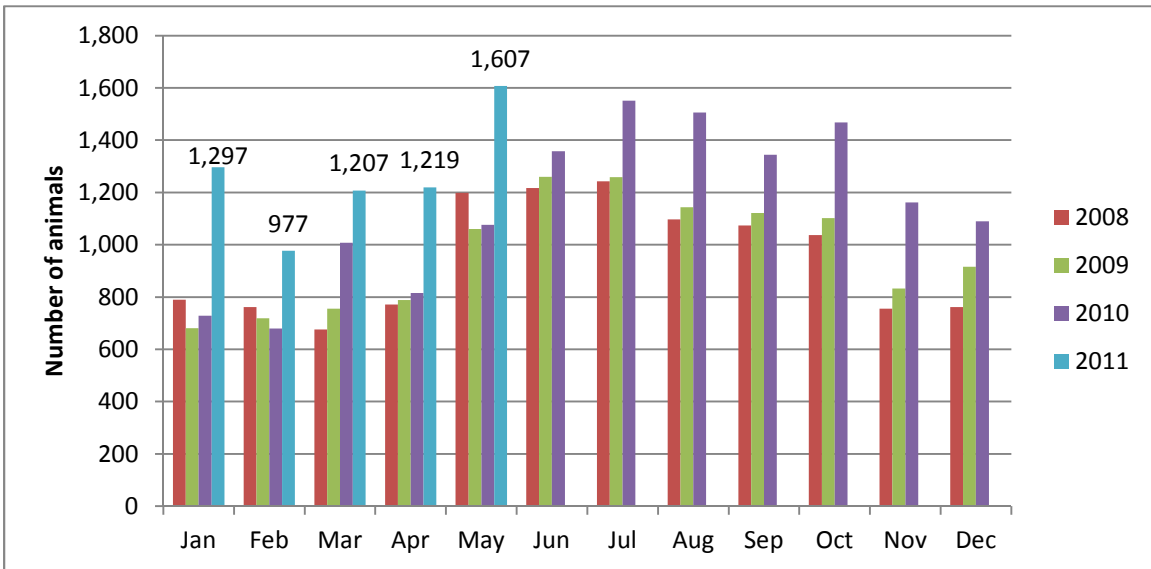
n=1 in the month of May 2011; year to date cases=8.

## Animal Center Statistical Summary



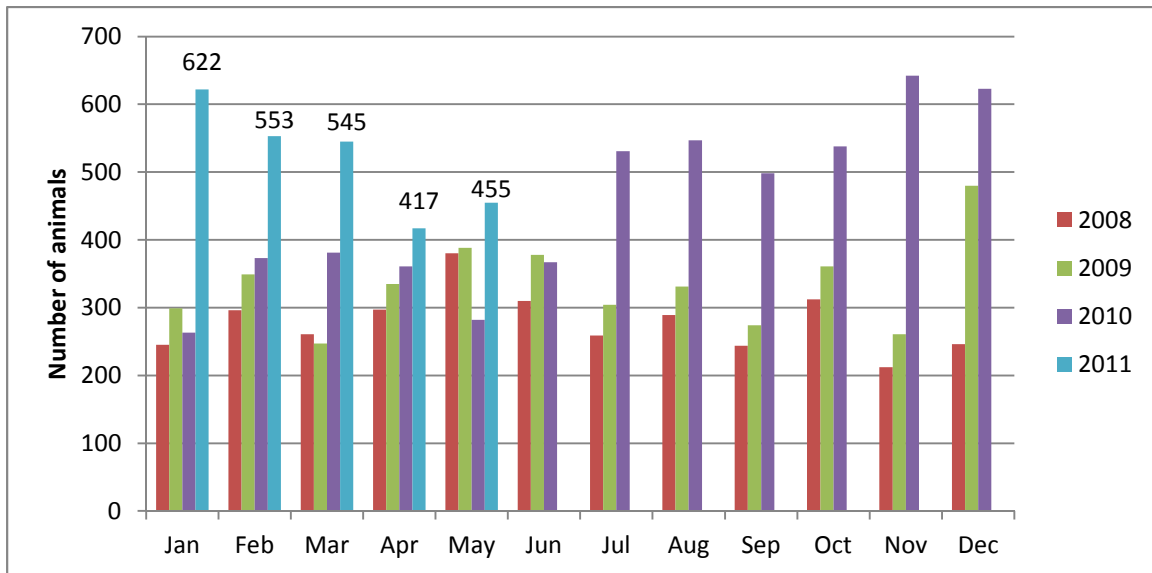
**Ebb and Flow of animal intake:** As depicted above, animal intake increases significantly in the warm months and drops in the cold months. This is typically associated with an increase in puppy and kitten litters in warm months. Adoptions do not normally increase to match the increase in intake so euthanasia rates can increase with intake.

## Animal Center Intake monthly comparison



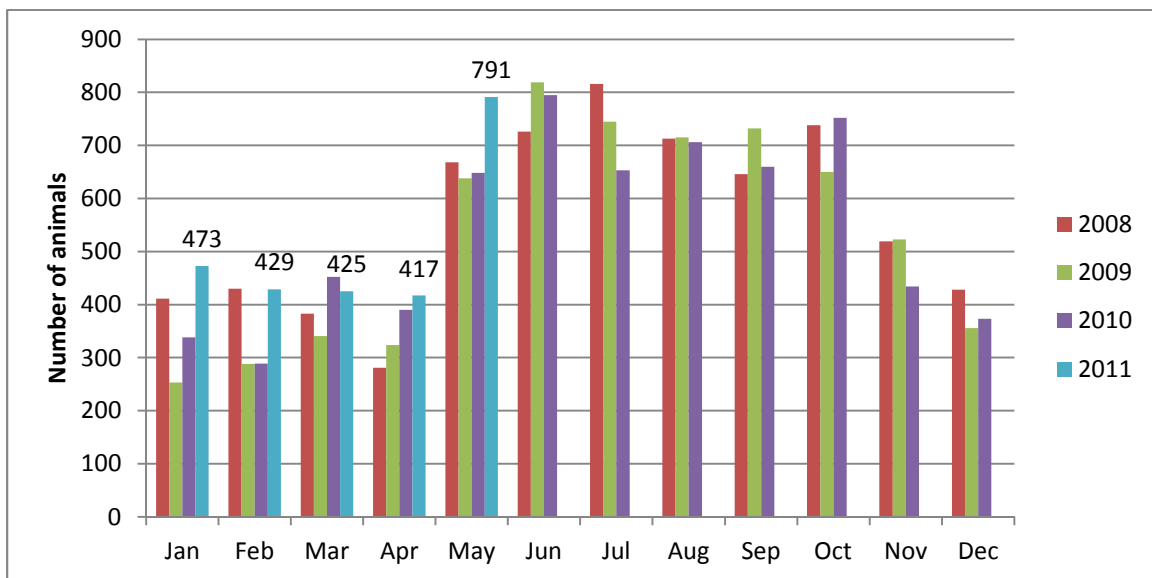
*n=1607; Intake is 49% higher than May 2010. May 2011 represents the largest number of intake animals received in a single month.*

## Adoption/Transfer Monthly Comparison



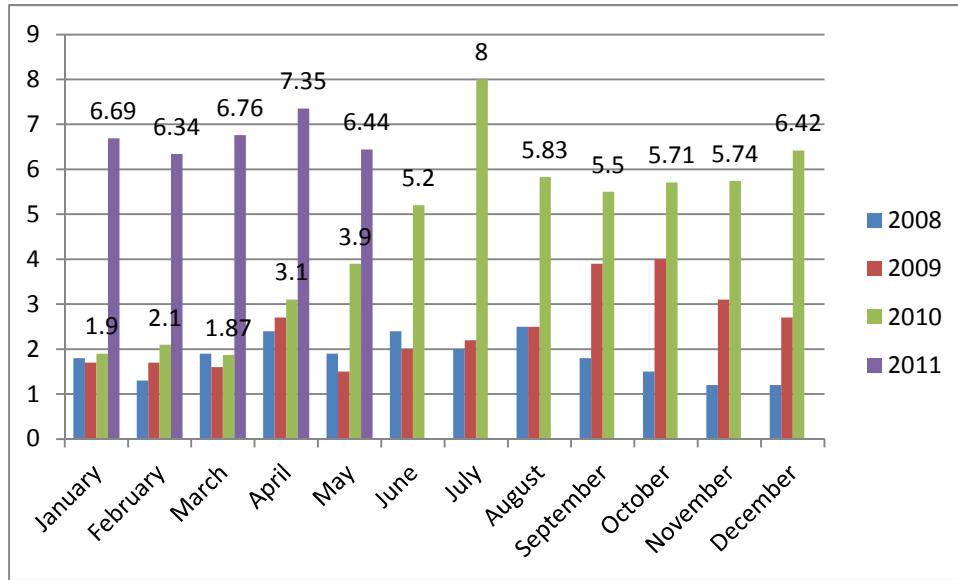
*n=455; data represents a combination of typical adoptions to new families and transfers to partner rescue groups; 61.9% increase in adoptions over May last year.*

## Euthanasia monthly comparison



*n=791; the euthanasia numbers are 22% higher than this month last year.*

## Volunteer hours by FTE



*n=6.44 FTEs; Volunteers logged enough hours this month to equal 6.44 extra full time employees. This includes dog walking, socialization, off-site events and work promoting animals in the community, just to name a few.*

**Wake County Animal Center  
Statistical Report**

**Date Range: July 1 - May 31**

**Date Prepared:**

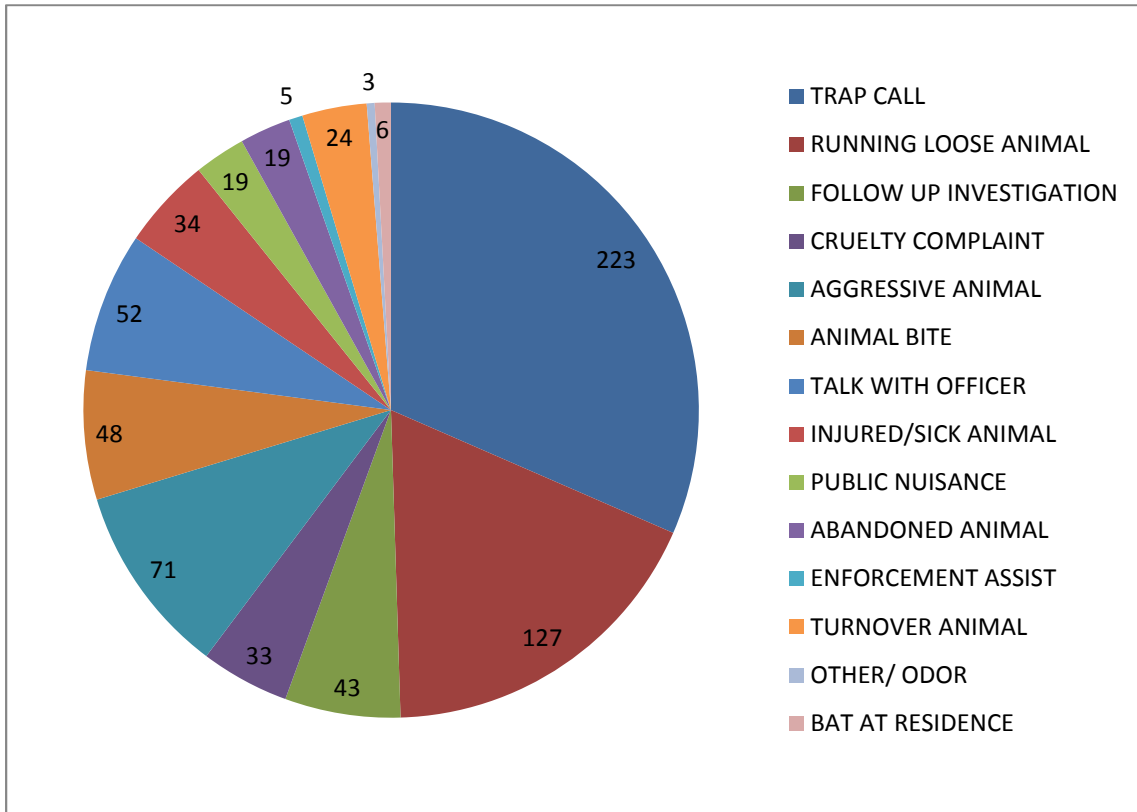
**5/31/2011**

	<b>YTD FY09</b>	<b>Percent</b>	<b>YTD FY10</b>	<b>Percent</b>	<b>YTD FY11</b>	<b>Percent</b>	<b>MTD</b>	<b>Percent</b>
Intake Dog	4795		4932		7024		671	
Intake Cat	4796		5358		6758		859	
Intake Other	358		257		573		77	
<b>Intake Total</b>	<b>9949</b>		<b>10547</b>		<b>14355</b>		<b>1607</b>	
Adoption Dog	1759	37%	1772	36%	2714	38.64%	195	29.06%
Adoption Cat	621	13%	821	15%	1463	21.65%	102	11.87%
Adoption Other	60	17%	121	47%	129	22.51%	5	6.49%
<b>Adoption Total</b>	<b>2440</b>	<b>25%</b>	<b>2714</b>	<b>26%</b>	<b>4306</b>	<b>30.00%</b>	<b>302</b>	<b>18.79%</b>
Transfer Dog	434	9%	668	14%	917	13.06%	65	9.69%
Transfer Cat	149	3%	238	4%	628	9.29%	64	7.45%
Transfer Other	141	39%	42	16%	119	20.77%	24	31.17%
<b>Transfer Total</b>	<b>724</b>	<b>7%</b>	<b>948</b>	<b>9%</b>	<b>1664</b>	<b>11.59%</b>	<b>153</b>	<b>9.52%</b>
Reclaim Dog	623	13%	599	12%	1198	17.06%	130	19.37%
Reclaim Cat	76	2%	81	2%	151	2.23%	13	1.51%
Reclaim Other	5	1%	7	3%	16	2.79%	0	0.00%
<b>Reclaim Total</b>	<b>704</b>	<b>7%</b>	<b>687</b>	<b>7%</b>	<b>1365</b>	<b>9.51%</b>	<b>143</b>	<b>8.90%</b>
Euth Dog	1781	37%	1684	34%	1937	27.58%	268	39.94%
Euth Cat	3825	80%	4095	76%	4173	61.75%	496	57.74%
Euth Other	107	30%	55	21%	239	41.71%	27	35.06%
<b>Euth Total</b>	<b>5713</b>	<b>57%</b>	<b>5834</b>	<b>55%</b>	<b>6349</b>	<b>44.23%</b>	<b>791</b>	<b>49.22%</b>

	<b>Total #</b>	<b>Percentage</b>
Change in intake from FY10 to FY11	3808	36%
Change in adoptions from FY10 to FY11	1592	59%
Change in transfers from FY10 to FY11	716	76%
Change in euthanasia from FY10 to FY11	515	9%
Change in total cat live releases	1102	97%
Change in cat live release percentage		12%
Change in total dog live releases	1790	59%
Change in dog live release percentage		7%

**NOTE: A decrease in total numbers or percentage will show a (-) symbol and be in red. Increases will be in blue and will not show a (+) symbol. NOTE: The first three columns show three different fiscal years, using the date range indicated on the top left corner of the report. Each month, we will compare the same date range across the current and past two fiscal years for equal comparison.**

### Animal Control Field Data



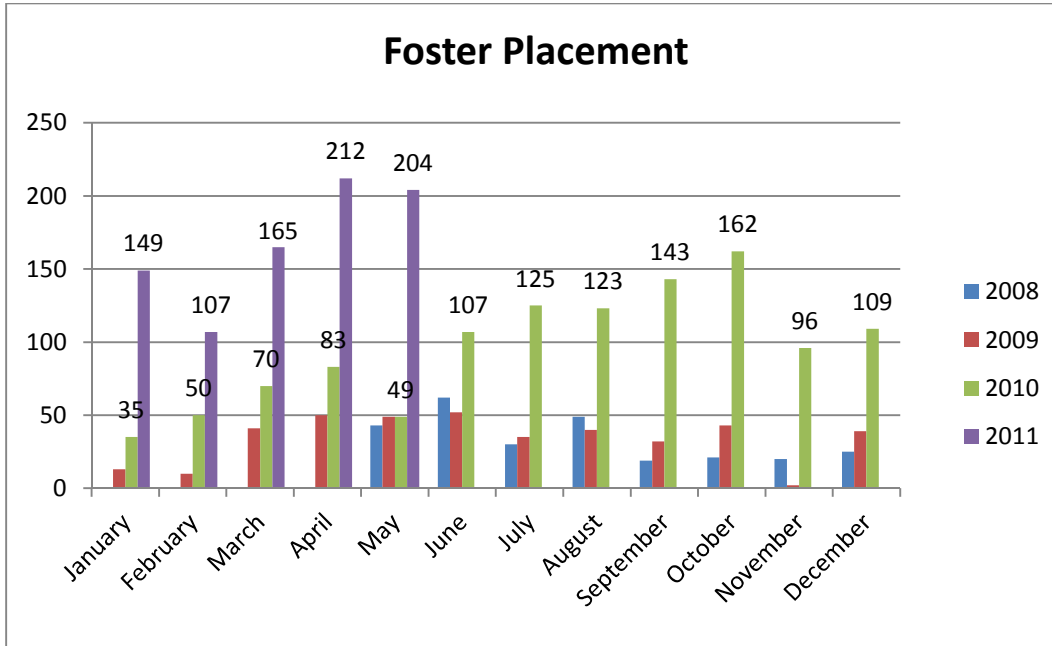
n=728; Wake County Animal Control responded to 728 requests for service in May 2011. Complaints for stray or loose animals continues to contribute to about half of all calls.

## Foster and Rescue Report

During the month of May, two hundred four (204) animals were placed into foster care.

During the month of May, one hundred fifty-two (152) animals were placed into the care of partnering rescue groups and adoption centers.

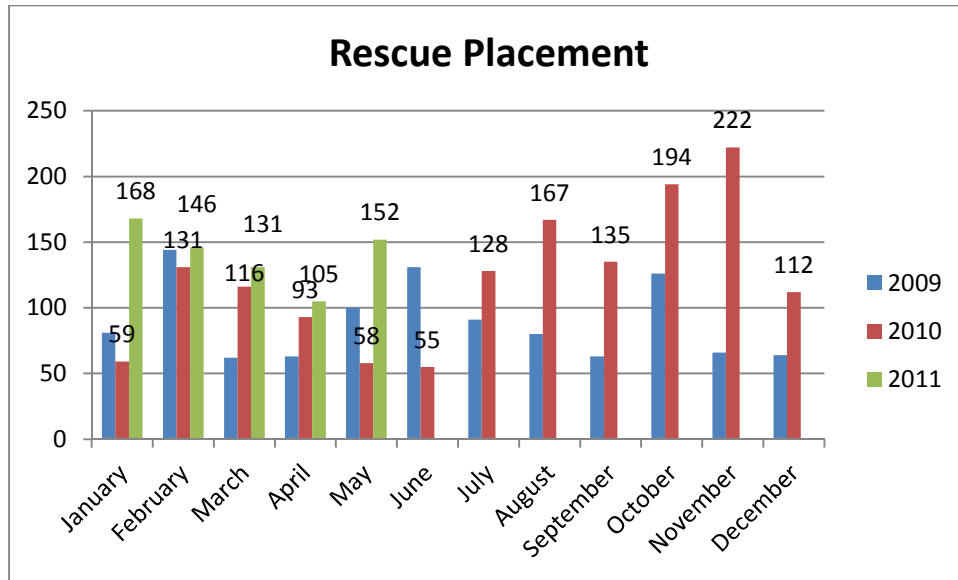
### Year over year comparison: Foster Placement



*n=204; The number of animals placed into foster care during May 2011 is the second highest on record. The high number signifies the start of puppy and kitten “season” as the number of litters arriving at the Center or being born while in foster care continues to rise.*

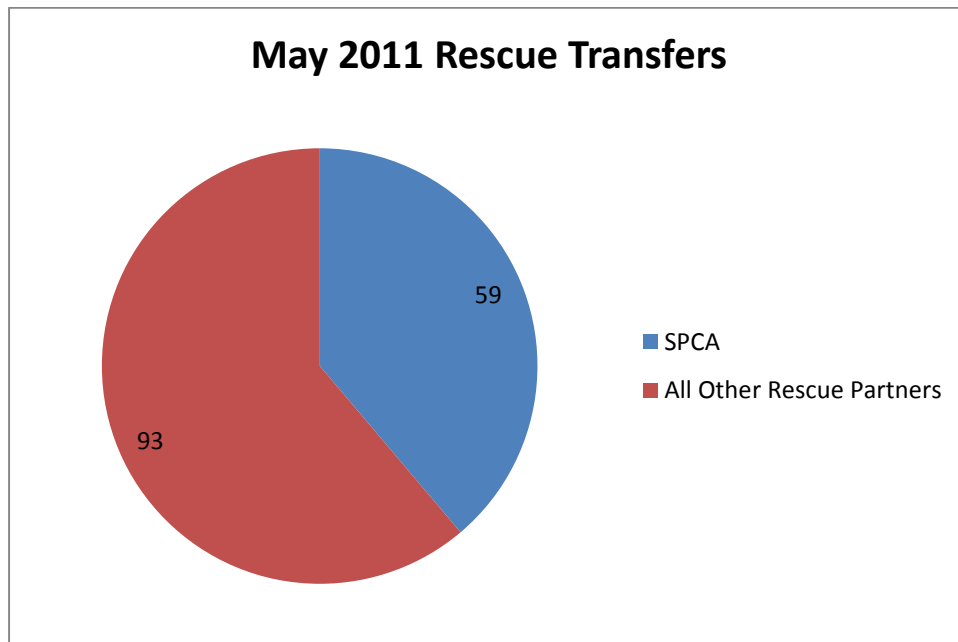


**Year over year comparison: Rescue Placement**



*n=152; Rescue placement is 162% higher than this month last year.*

**Distribution of Rescue Placement**



*N=152; WCAC transferred 13 dogs to Faulkner Animal Rescue and Recovery and 53 cats to the SPCA of Wake County in the month of May.*

## Top Canine and Feline Transfers

<b>May 2011</b>	<b>Dogs Transferred</b>
Faulkner Animal Rescue and Recovery	13
Paw Prints Animal Rescue	10
Dachshund Rescue of North America	6
SPCA of Wake County	6
Hav-A-Hart Pet Rescue	6
Pet & People Foundation	2

<b>May 2011</b>	<b>Cats Transferred</b>
SPCA of Wake County	53
Marley's Cat Tales	5
Faulkner Animal Rescue and Recovery	1