

Definitions

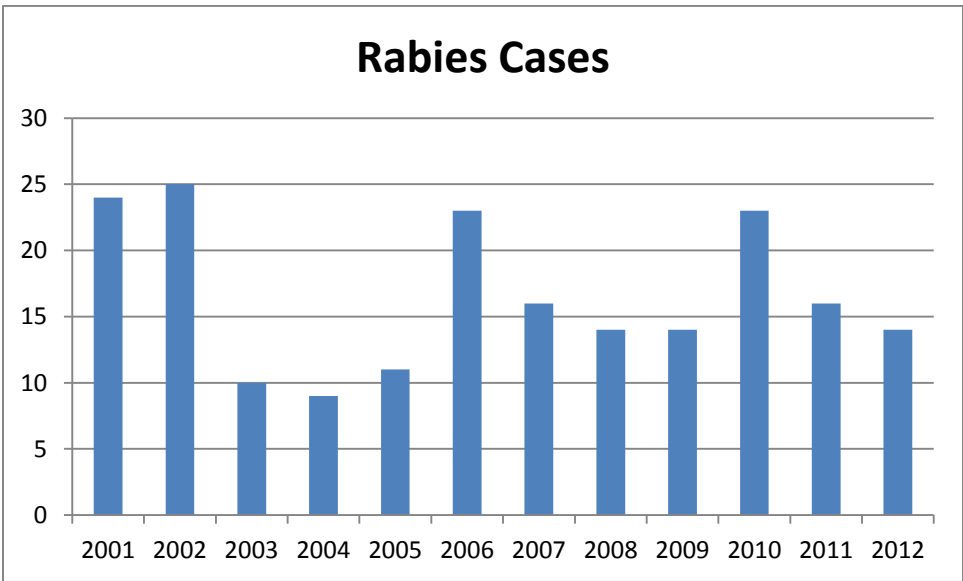
Intake: Animals admitted to the Animal Center. These include animals surrendered by the general public, picked up by Animal Control and animals born at the Center.

Adoption: Includes animals adopted to new homes and transferred to qualifying rescue groups.

Reclaim: Animals reclaimed by their owners after being found as strays or after completing quarantine period.

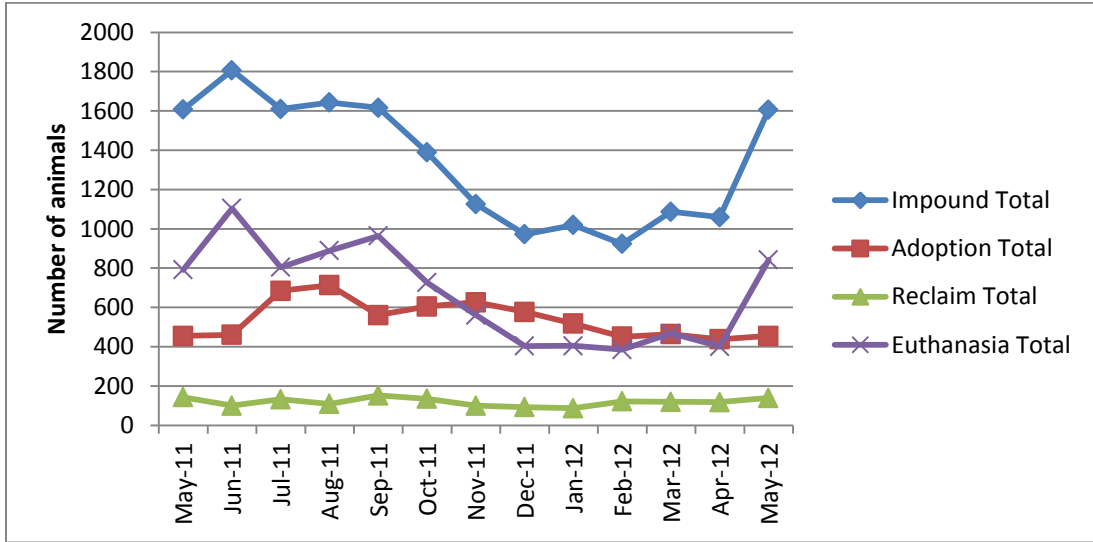
Euthanasia: Animals humanely euthanized at the Center. This includes animals that reside at the Animal Center and animals surrendered by their owner for euthanasia for medical or behavioral reasons.

Rabies: Positive confirmed laboratory cases



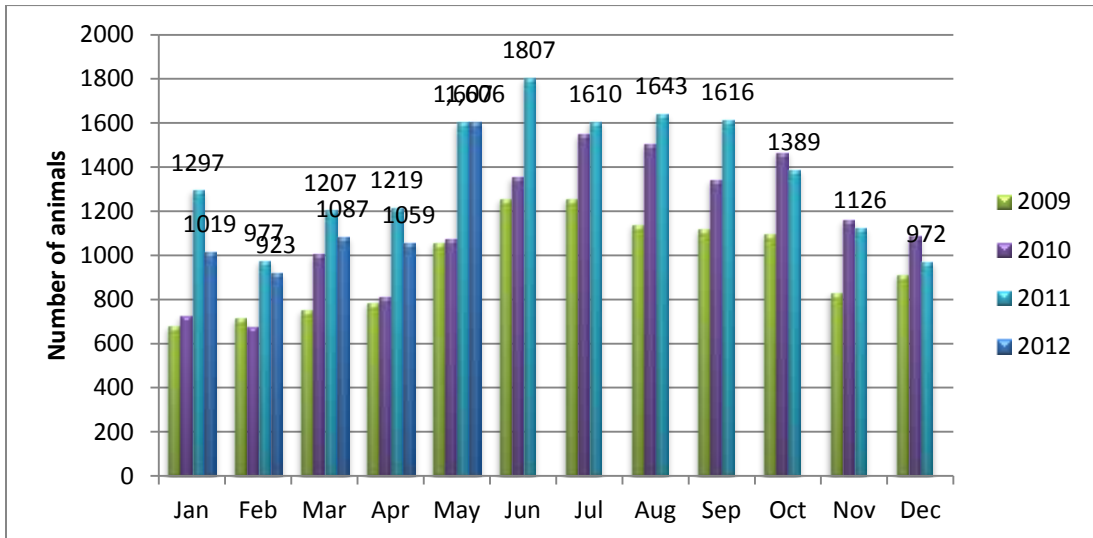
n=14; 5 cases in the month of May 2012; year to date cases=14.

Animal Center Statistical Summary



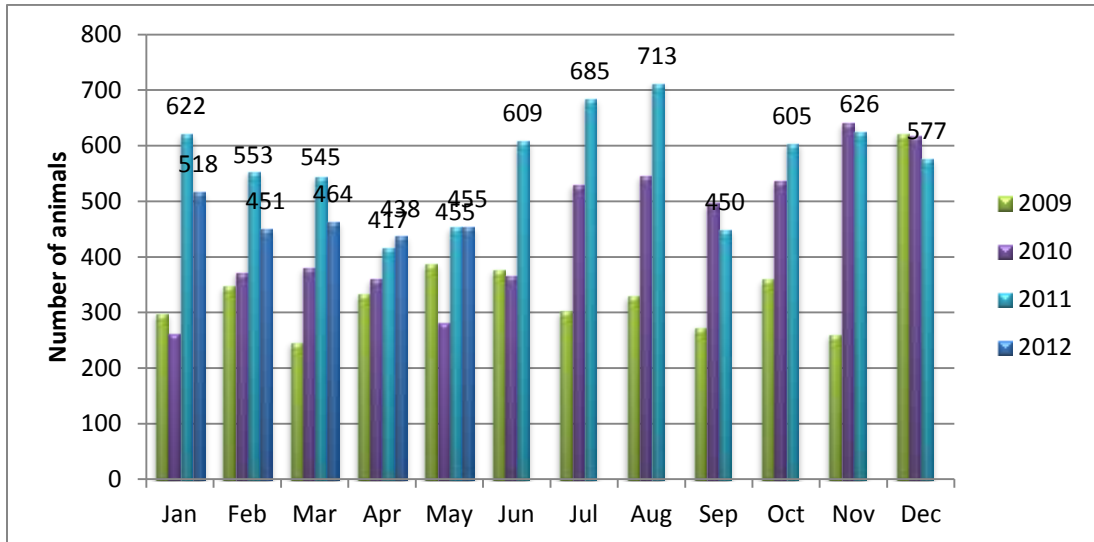
Ebb and Flow of animal intake: As depicted above, animal intake increases significantly in the warm months and drops in the cold months. This is typically associated with an increase in puppy and kitten litters in warm months. Adoptions do not normally increase to match the increase in intake so euthanasia rates can increase with intake.

Animal Center Intake monthly comparison



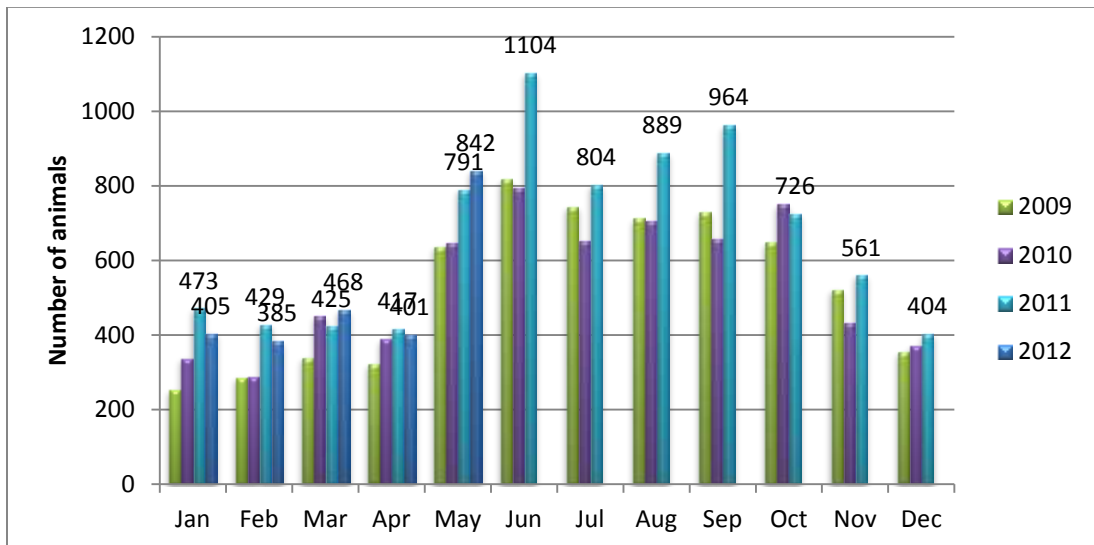
n=1606; Intake is equal to May 2011.

Adoption/Transfer Monthly Comparison



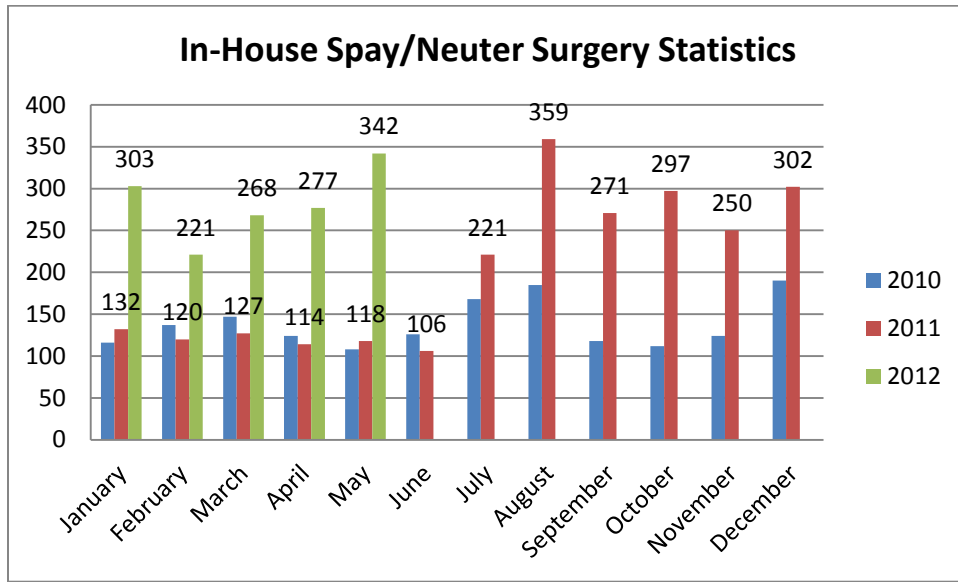
n=455; data represents a combination of typical adoptions to new families and transfers to partner rescue groups; equal number of adoptions/transfers as May last year.

Euthanasia monthly comparison



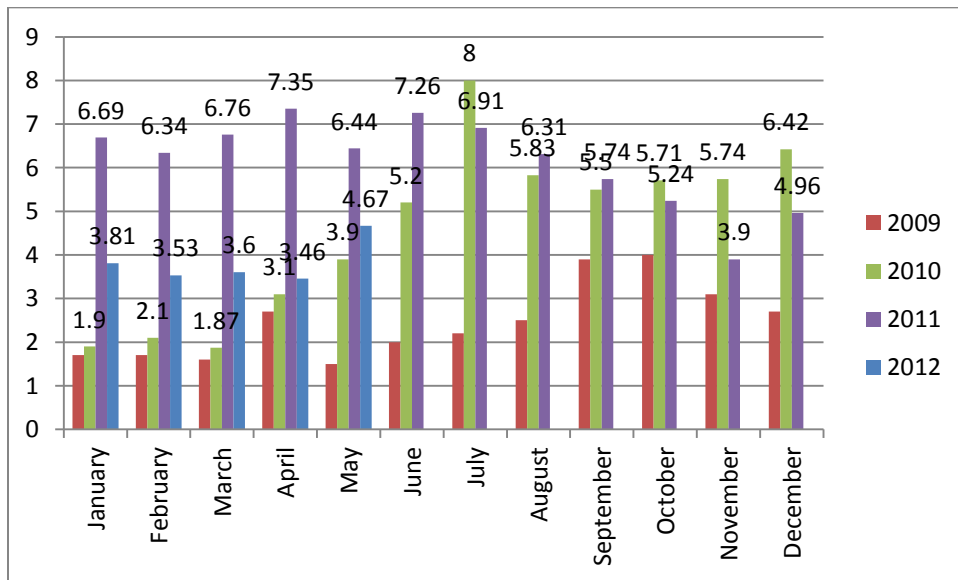
n=842.

Spay/Neuter Surgeries monthly comparison



n=342; spay/neuter surgeries; Three hundred forty-two (342) spay or neuter surgeries were performed during the month of May by the Center's in-house veterinary program

Volunteer hours by FTE



n=4.67 FTEs; Volunteers logged enough hours this month to equal 4.67 extra full time employees. This includes dog walking, socialization, off-site events and work promoting animals in the community, just to name a few.

Wake County Animal Center Statistical Report

Date Range: July 1, 2011 - May 31, 2012

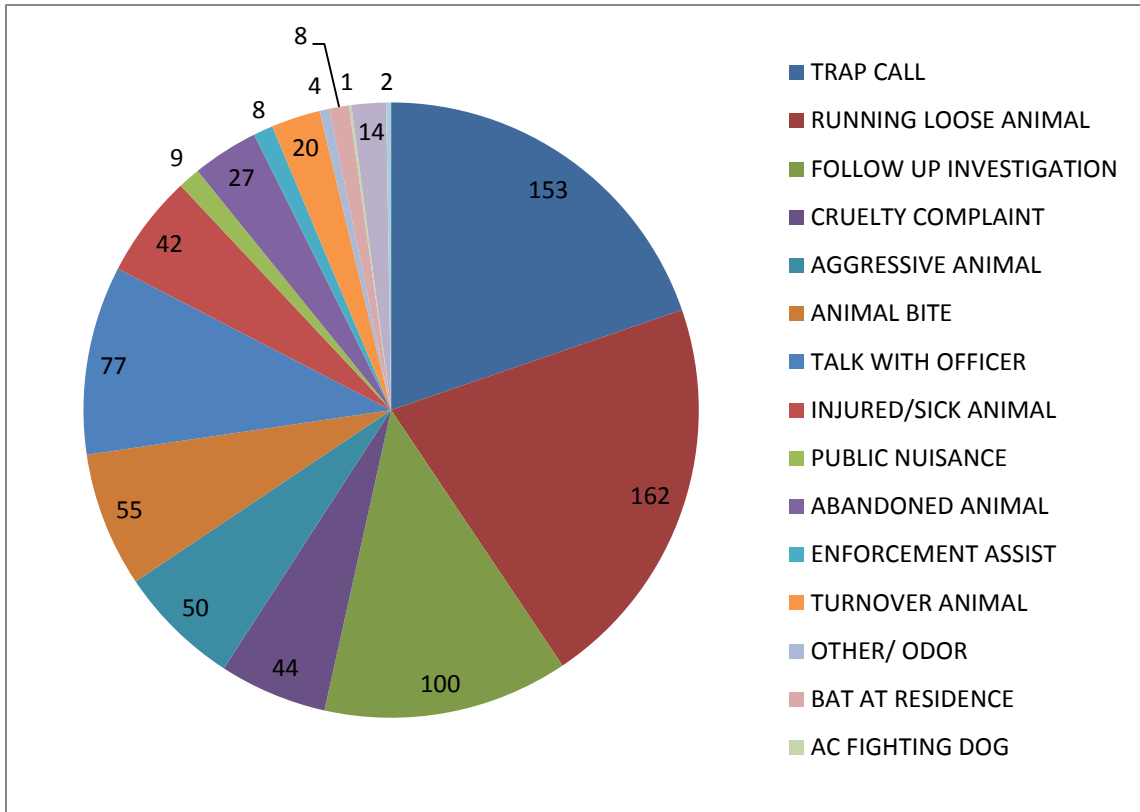
Date Prepared: 06/11/2012

	YTD FY09	%	YTD FY10	%	YTD FY11	%	YTD FY12	%	MTD	%
Intake Dog	4795		4932		7025		6928		638	
Intake Cat	4795		5358		6748		6410		884	
Intake Other	358		257		569		643		84	
Intake Total	9948		10547		14342		13981		1606	
Adoption Dog	1751	37%	1779	36%	2713	39%	2855	41.2%	232	36.4%
Adoption Cat	614	13%	820	15%	1461	22%	1606	25.1%	138	15.6%
Adoption Other	68	21%	125	49%	129	23%	187	29.1%	11	13.1%
Adoption Total	2433	24%	2724	26%	4303	30%	4648	33.2%	381	23.7%
Transfer Dog	434	9%	668	14%	918	13%	741	10.7%	43	6.7%
Transfer Cat	149	3%	238	4%	628	9%	436	6.8%	30	3.4%
Transfer Other	141	39%	42	16%	120	21%	56	8.7%	1	1.2%
Transfer Total	724	7%	948	9%	1666	12%	1233	8.8%	74	4.6%
Reclaim Dog	621	13%	597	12%	1176	17%	1144	16.5%	114	17.9%
Reclaim Cat	76	2%	81	2%	150	2%	158	2.5%	24	2.7%
Reclaim Other	5	1%	7	3%	16	3%	8	1.2%	1	1.2%
Reclaim Total	702	7%	685	6%	1342	9%	1310	9.4%	139	8.7%
Euth Dog	1799	38%	1701	34%	1914	27%	2328	33.6%	225	35.3%
Euth Cat	3839	80%	4110	77%	4111	61%	4232	66.0%	558	63.1%
Euth Other	108	30%	59	23%	238	42%	321	49.9%	59	70.2%
Euth Total	5746	58%	5870	56%	6263	44%	6881	49.2%	842	52.4%

	Total	%
Change in intake from FY11 to FY12	-361	-3%
Change in adoptions from FY11 to FY12	345	8%
Change in transfers from FY11 to FY12	-433	-26%
Change in euthanasia from FY11 to FY12	618	10%
	-	-
Change in total cat live releases	-39	1.7%
	-	-
Change in total dog live releases	-67	1.4%

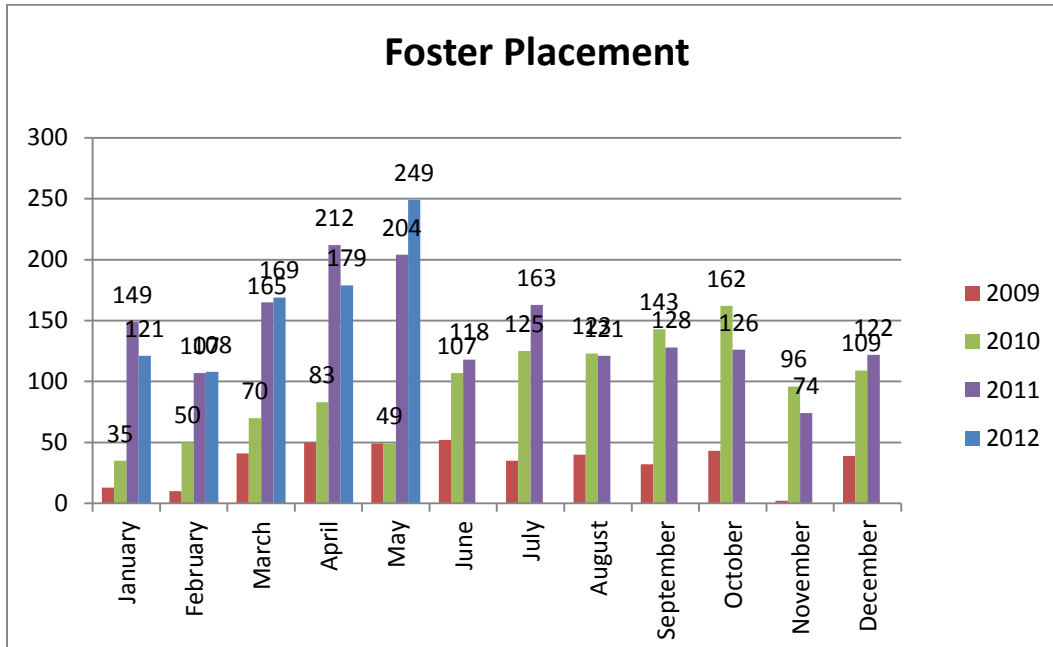
NOTE: A decrease in total numbers or percentage will show a (-) symbol and be in red. Increases will be in blue and will not show a (+) symbol. NOTE: The first three columns show three different fiscal years, using the date range indicated on the top left corner of the report. Each month, we will compare the same date range across the current and past three fiscal years for equal comparison.

Animal Control Field Data



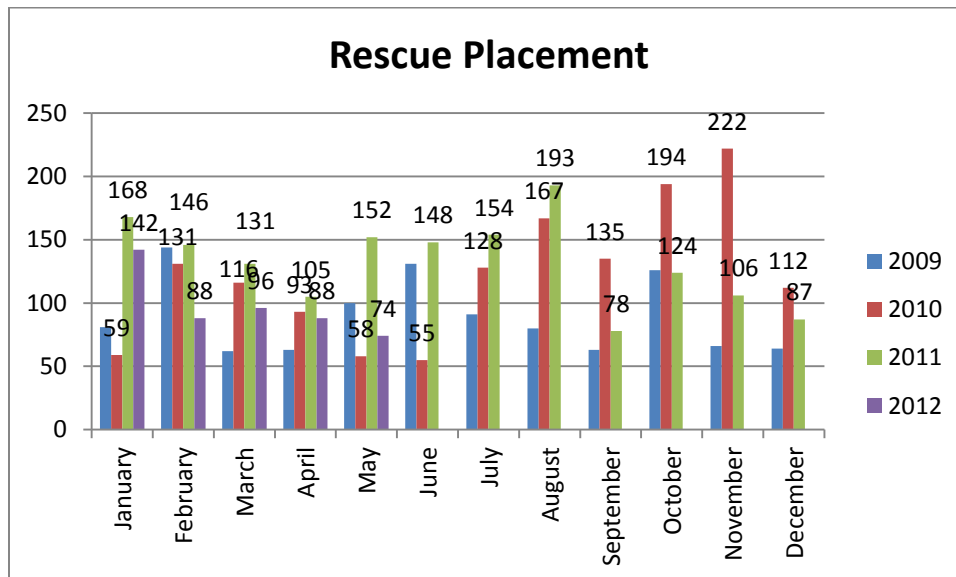
n=776; Wake County Animal Control responded to 461 requests for service in May 2012. Complaints for stray or loose animals continues to contribute to about half of all calls.

Year over year comparison: Foster Placement



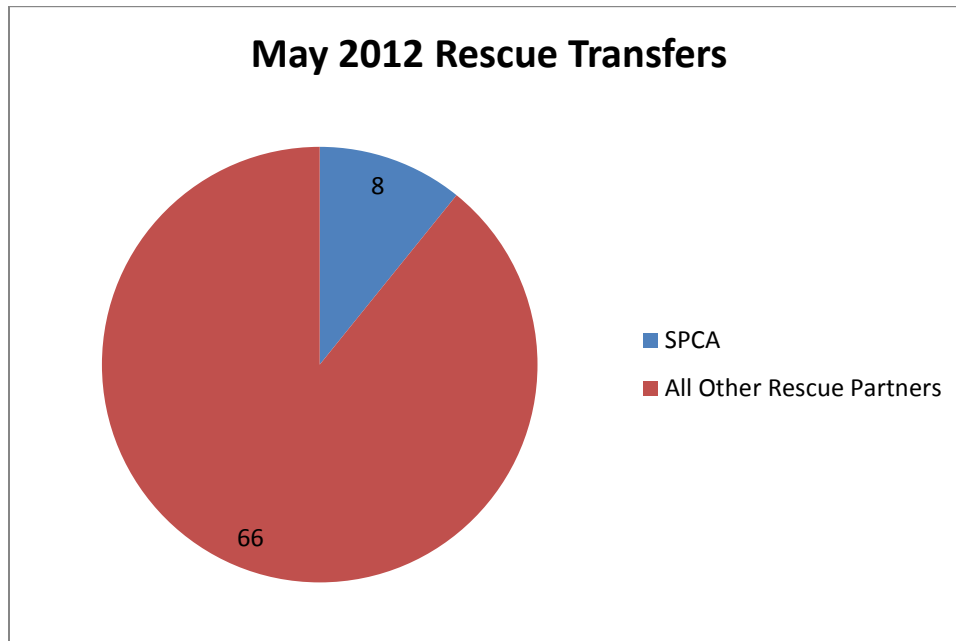
n=249; during the month of May, Two-hundred forty-nine (249) animals were placed into foster care.

Year over year comparison: Rescue Placement



n=74; Rescue placement is 51% lower than this month last year. During the month of May, Seventy-four (74) animals were placed into the care of partnering rescue groups and adoption centers.

Distribution of Rescue Placement



n=74; WCAC transferred 8 animals to the SPCA of Wake County and 66 animals to our other rescue partners.

Top Canine and Feline Transfers

May 2012	Canine
Rescue Ur Forever Friend	9
Carolina Vet Assist. & Adoption	6
Mitchell Mill Animal Hospital	5
SPCA of Wake County	3

May 2012	Feline
SAFE Haven for Cats	7
Mitchell Mill Animal Hospital	7
SPCA of Wake County	5
Carolina Vet Assist. & Adoption	5