

Wake County

Animal Care, Control and Adoption

October 2011 Monthly Report



Definitions

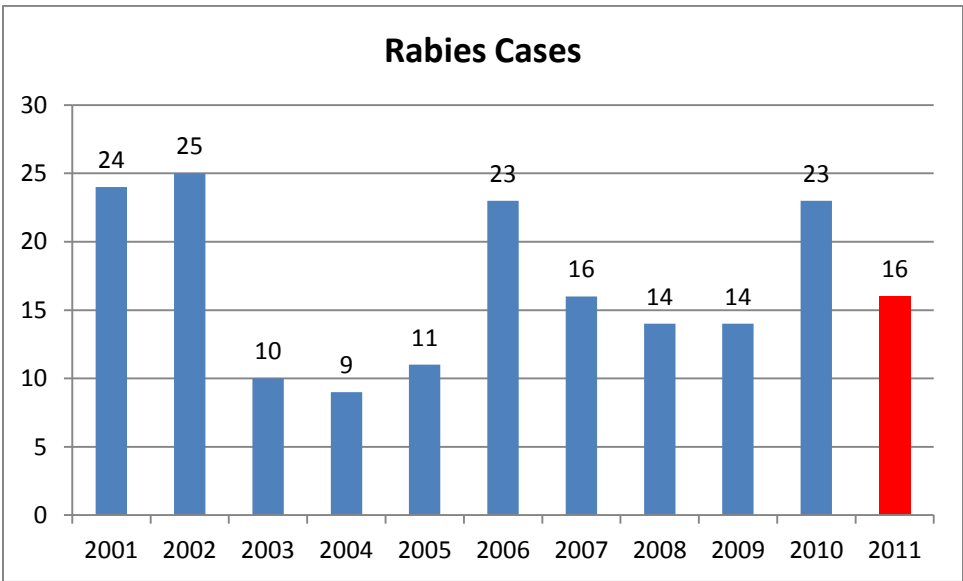
Intake: Animals admitted to the Animal Center. These include animals surrendered by the general public, picked up by Animal Control and animals born at the Center.

Adoption: Includes animals adopted to new homes and transferred to qualifying rescue groups.

Reclaim: Animals reclaimed by their owners after being found as strays or after completing quarantine period.

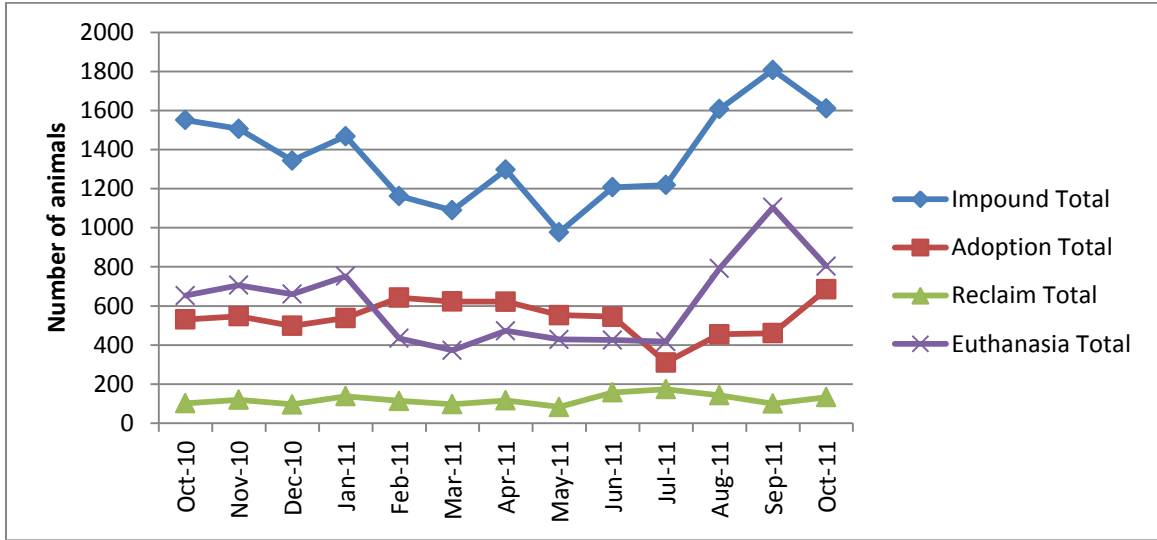
Euthanasia: Animals humanely euthanized at the Center. This includes animals that reside at the Animal Center and animals surrendered by their owner for euthanasia for medical or behavioral reasons.

Rabies: Positive confirmed laboratory cases



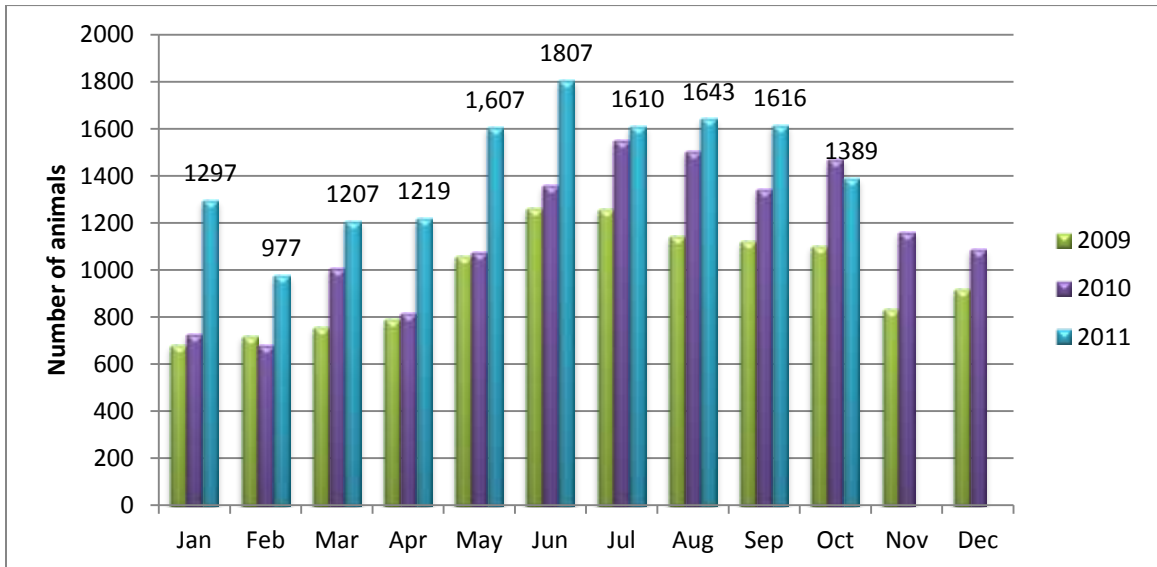
n=2; in the month of October 2011; year to date cases=16.

Animal Center Statistical Summary



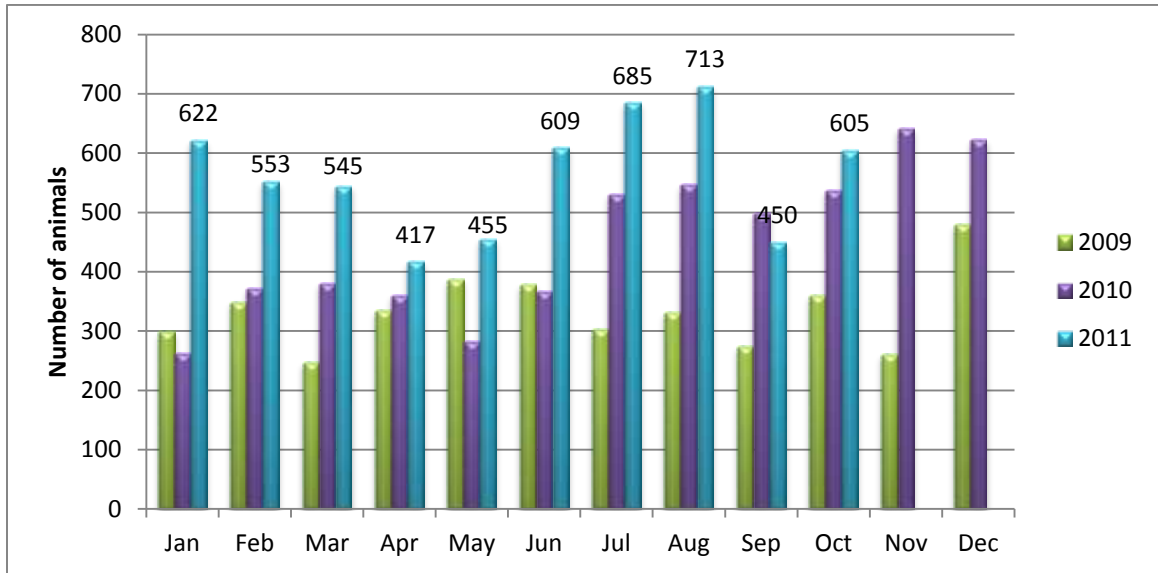
Ebb and Flow of animal intake: As depicted above, animal intake increases significantly in the warm months and drops in the cold months. This is typically associated with an increase in puppy and kitten litters in warm months. Adoptions do not normally increase to match the increase in intake so euthanasia rates can increase with intake.

Animal Center Intake monthly comparison



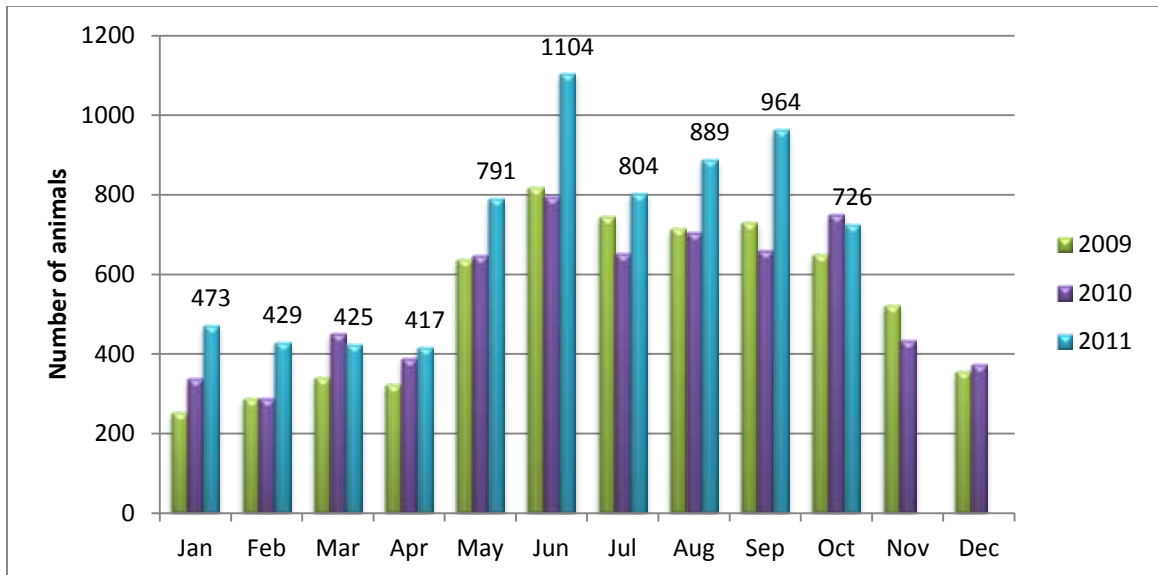
n=1389; Intake is 5% lower than October 2010.

Adoption/Transfer Monthly Comparison



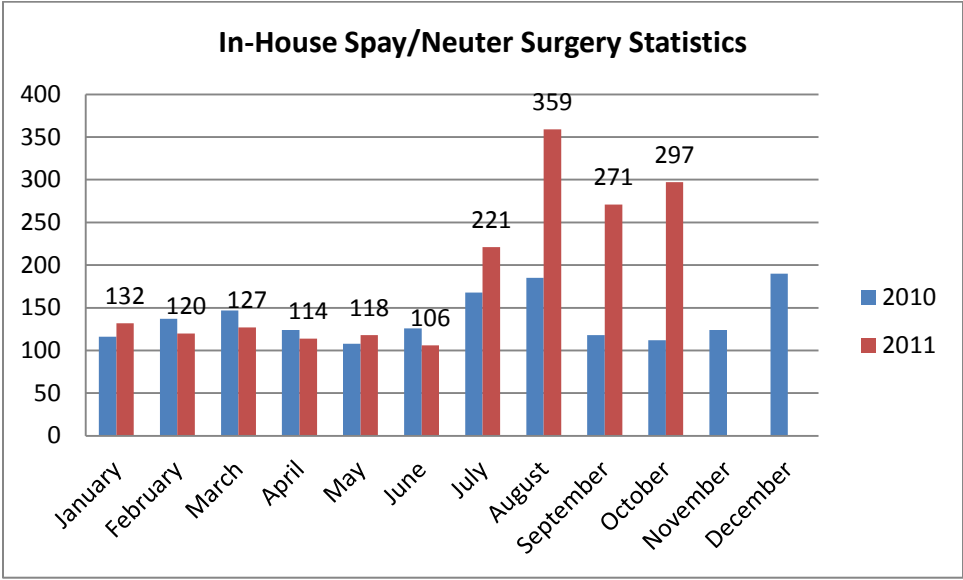
n=605; data represents a combination of typical adoptions to new families and transfers to partner rescue groups; 12.5% increase in adoptions over October last year.

Euthanasia monthly comparison



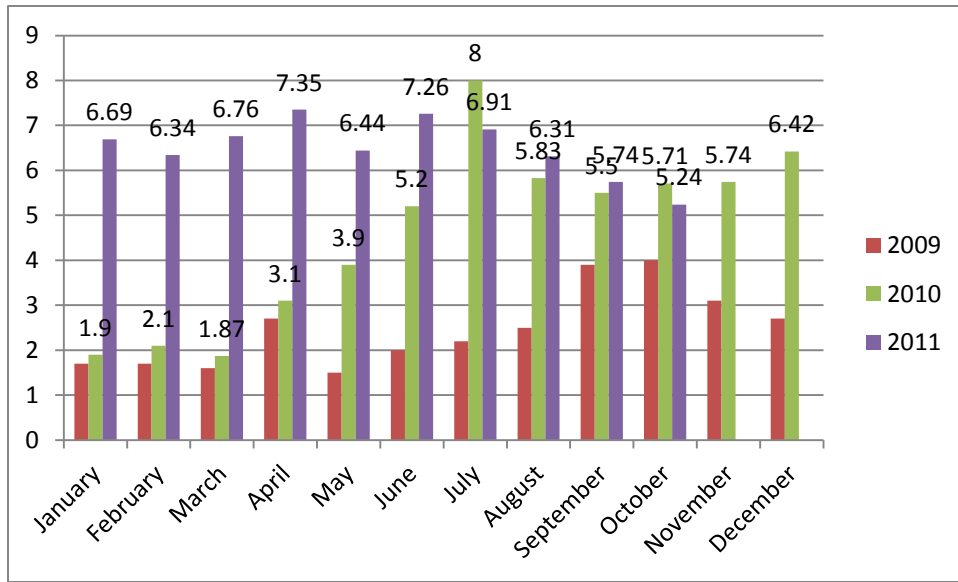
n=726.

Spay/Neuter Surgeries monthly comparison



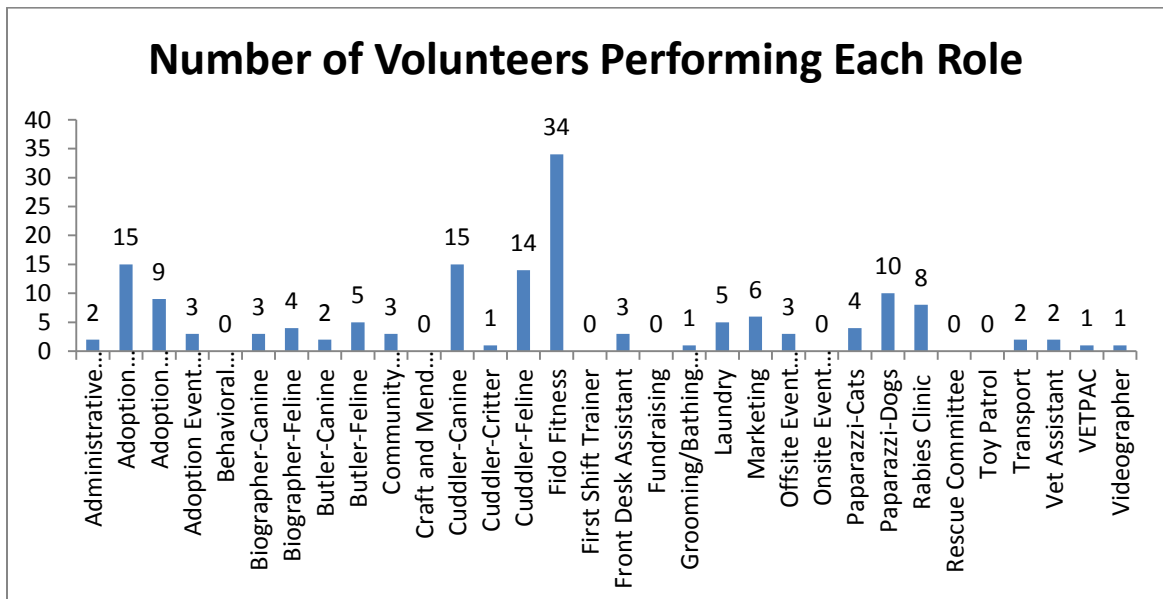
n=297; spay/neuter surgeries; Two hundred and ninety-seven (297) spay or neuter surgeries were performed during the month of October by the Center’s in-house veterinary program. The surgery counts reflect only those surgeries performed in the Center, not those performed by third-party clinics in the community (SNAP, Saving Lives, Safe Care Feline Clinic).

Volunteer hours by FTE



n=5.24 FTEs; Volunteers logged enough hours this month to equal 5.24 extra full time employees. This includes dog walking, socialization, off-site events and work promoting animals in the community, just to name a few.

Number of Volunteers performing each role



**Wake County Animal Center
Statistical Report**

Date Range: July 1 - October 31, 2011

Date Prepared:

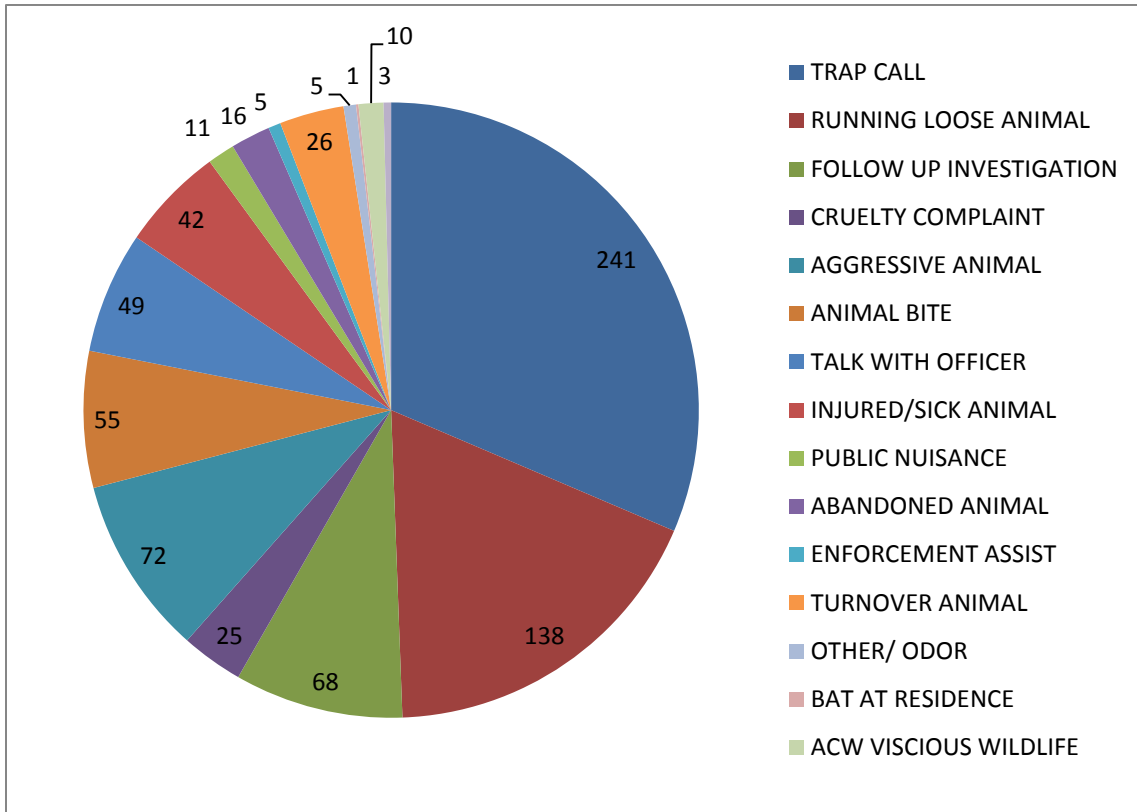
11/8/2011

	YTD FY09	Percent	YTD FY10	Percent	YTD FY11	Percent	YTD FY12	Percent	MTD	Percent
Intake Dog	1933		1945		2557		2902		655	
Intake Cat	2416		2526		3037		3058		689	
Intake Other	101		114		231		287		45	
Intake Total	4450		4585		5825		6247		1389	
Adoption Dog	630	33%	604	31%	907	35%	1162	40.04%	297	45.34%
Adoption Cat	241	10%	267	11%	532	18%	659	21.55%	160	23.22%
Adoption Other	21	21%	42	37%	54	23%	69	24.04%	20	44.44%
Adoption Total	892	20%	913	20%	1493	26%	1890	30.25%	477	34.34%
Transfer Dog	156	8%	292	15%	307	12%	314	10.82%	65	9.92%
Transfer Cat	27	1%	55	2%	275	9%	221	7.23%	52	7.55%
Transfer Other	19	19%	14	12%	42	18%	28	9.76%	11	24.44%
Transfer Total	202	5%	361	8%	624	11%	563	9.01%	128	9.22%
Reclaim Dog	228	12%	237	12%	399	16%	466	16.06%	114	17.40%
Reclaim Cat	29	1%	28	1%	53	2%	58	1.90%	20	2.90%
Reclaim Other	2	2%	2	2%	5	2%	5	1.74%	1	2.22%
Reclaim Total	259	6%	267	6%	457	8%	529	8.47%	135	9.72%
Euth Dog	848	44%	746	38%	738	29%	1084	37.35%	206	31.45%
Euth Cat	2034	84%	2093	83%	2021	67%	2163	70.73%	501	72.71%
Euth Other	40	40%	24	21%	99	43%	135	47.04%	19	42.22%
Euth Total	2922	66%	2863	62%	2858	49%	3382	54.14%	726	52.27%

	Total #	Percentage
Change in intake from FY11 to FY12	422	7%
Change in adoptions from FY11 to FY12	397	27%
Change in transfers from FY11 to FY12	-61	-10%
Change in euthanasia from FY11 to FY12	524	18%
Change in total cat live releases	78	9%
Change in cat live release percentage		2%
Change in total dog live releases	329	20%
Change in dog live release percentage		4%

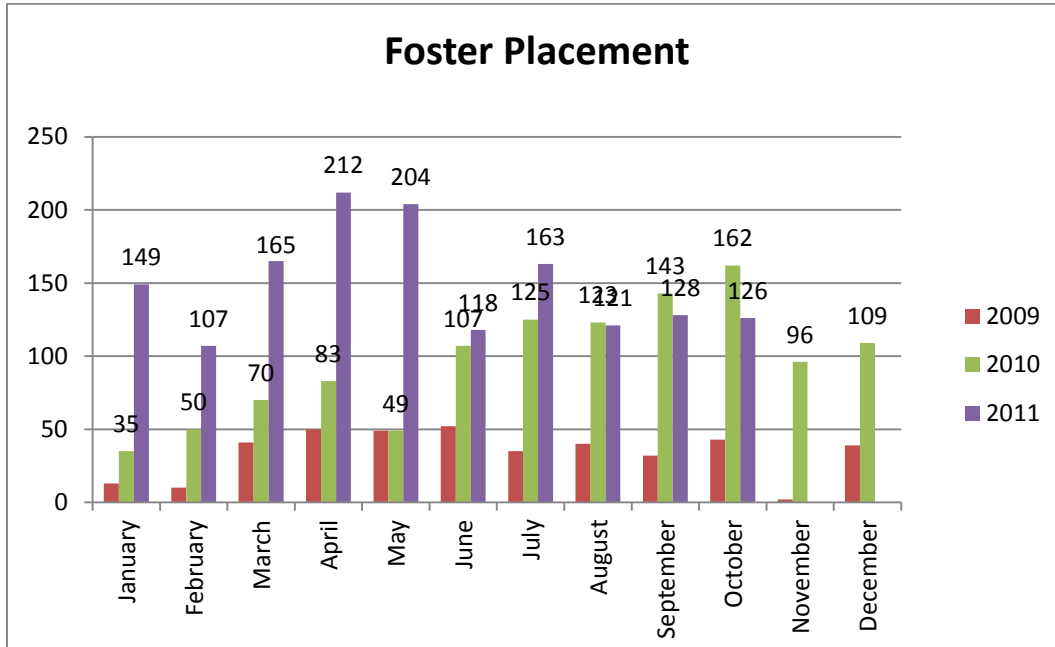
NOTE: A decrease in total numbers or percentage will show a (-) symbol and be in red. Increases will be in blue and will not show a (+) symbol. NOTE: The first three columns show three different fiscal years, using the date range indicated on the top left corner of the report. Each month, we will compare the same date range across the current and past three fiscal years for equal comparison.

Animal Control Field Data



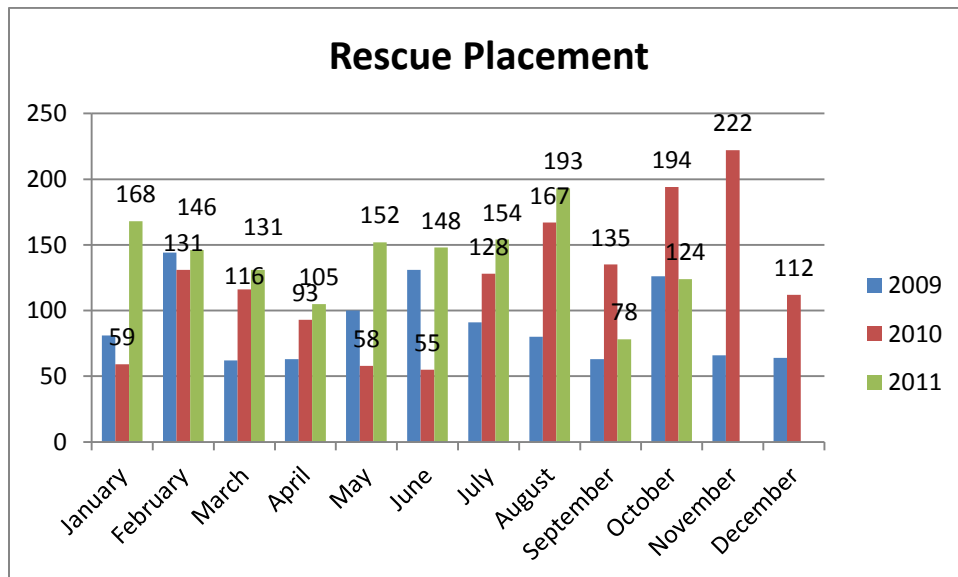
n=767; Wake County Animal Control responded to 767 requests for service in October 2011. Complaints for stray or loose animals continues to contribute to about half of all calls.

Year over year comparison: Foster Placement



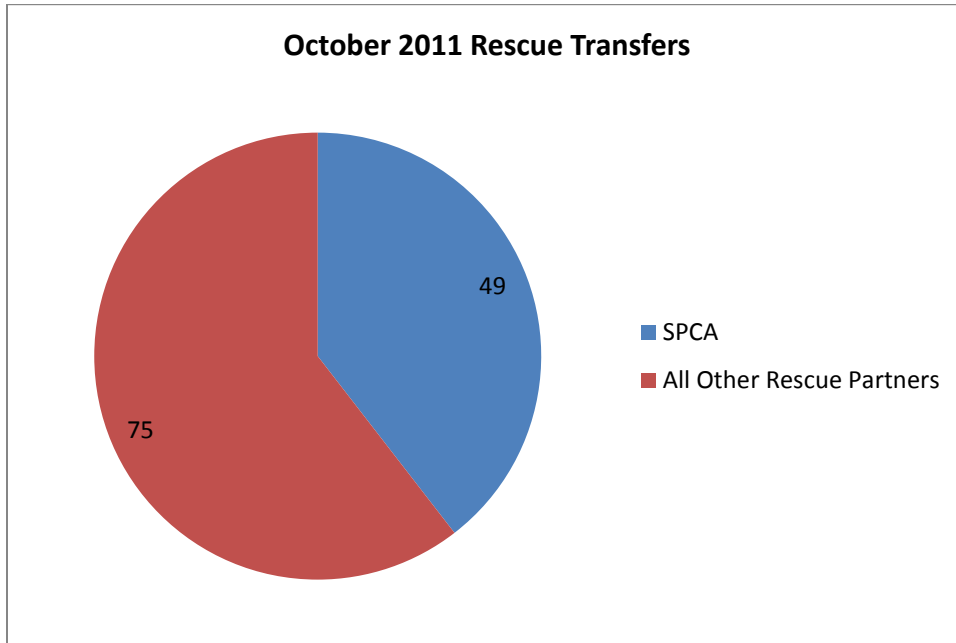
n=126; during the month of October, one hundred twenty-six (126) animals were placed into foster care.

Year over year comparison: Rescue Placement



n=124; Rescue placement is 63% lower than this month last year. During the month of September, One-hundred twenty-four (124) animals were placed into the care of partnering rescue groups and adoption centers.

Distribution of Rescue Placement



n=124; WCAC transferred 49 animals to the SPCA of Wake County and 75 animals to our other rescue partners.

Top Canine and Feline Transfers

October 2011	Canine
SPCA of Wake County	14
Refurbished Canine Rescue	8
Schnauzer Rescue of the Carolinas	8
Camp Canines	7
Paw Prints Animal Rescue	5
Mitchell Mill Animal Hospital	3

October 2011	Feline
SPCA of Wake County	35
Pet & People Foundation	8
Mitchell Mill Animal Hospital	4
AniMall Pet Adoption and Outreach	2
Paw Prints Animal Rescue	1