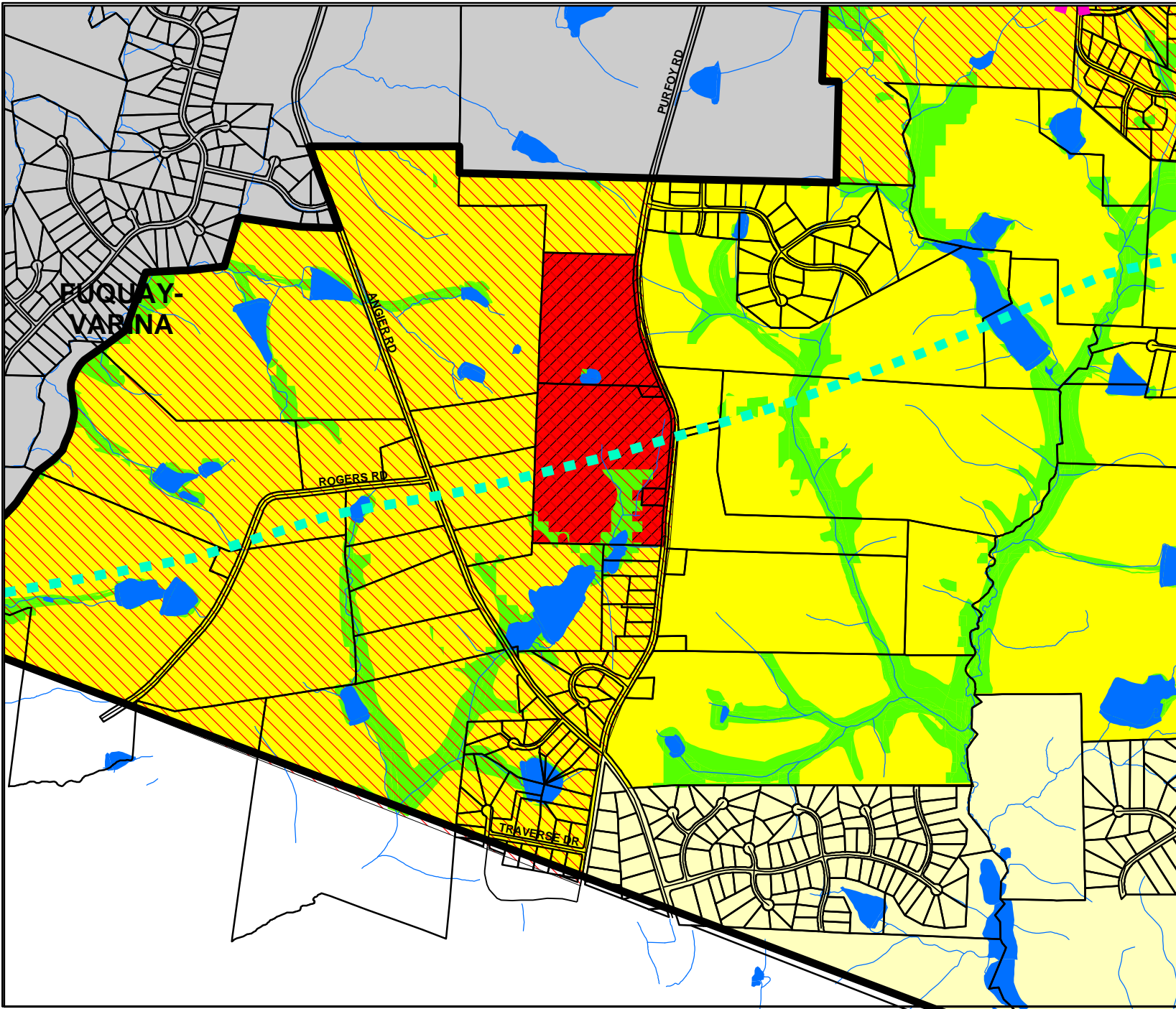


# FUQUAY-VARINA/GARNER AREA LAND USE STUDY Eastwood Neighborhood



### Classifications

- Special Highway Overlay District
- Historic District
- Open Space
- Residential > 8 unit per acre
- Residential 4-8 unit per acre
- Residential 1-4 unit per acre
- Residential < 1.5 unit per acre
- Residential < 1 unit per acre
- Study Area Boundary
- Outside Study Area
- Water Bodies
- Boundary between Cape Fear and Neuse River Basins
- Thoroughfares
- Rivers and Streams

### Existing Activity Centers

- Neighborhood
- Community
- Neighborhood

### Proposed Activity Centers

- Regional
- Community
- Neighborhood
- Interchanges
- Roads
- Regional Rail
- Industrial
- Open Space
- Significant Natural Resource
- Planned Growth Area

Map Location: L:\Planning\projects\fuquay\_varina\garner\EASTWOOD.mxd  
 Map copy in same directory: Auburn.pdf  
 Created by Aaron Drake  
 Wake County Planning Department  
 Printed at 04:39:43 PM on Oct 03, 2003

