

FUQUAY-VARINA/GARNER AREA LAND USE STUDY Hilltop Needmore - Sunset Lake Neighborhood

Classifications

- Special Highway Overlay District
- Historic District
- Open Space
- Residential > 8 unit per acre
- Residential 4-8 unit per acre
- Residential 1-4 unit per acre
- Residential < 1.5 unit per acre
- Residential < 1 unit per acre
- Study Area Boundary
- Outside Study Area
- Water Bodies
- Boundary between Cape Fear and Neuse River Basins
- Thoroughfares
- Rivers and Streams

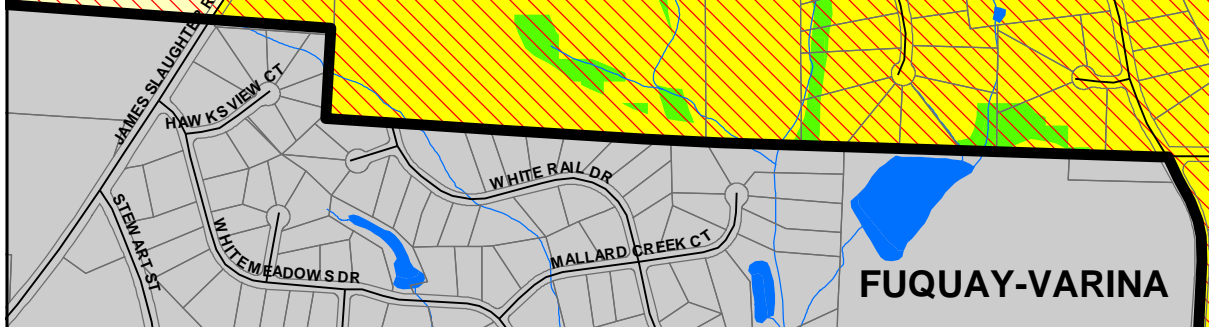
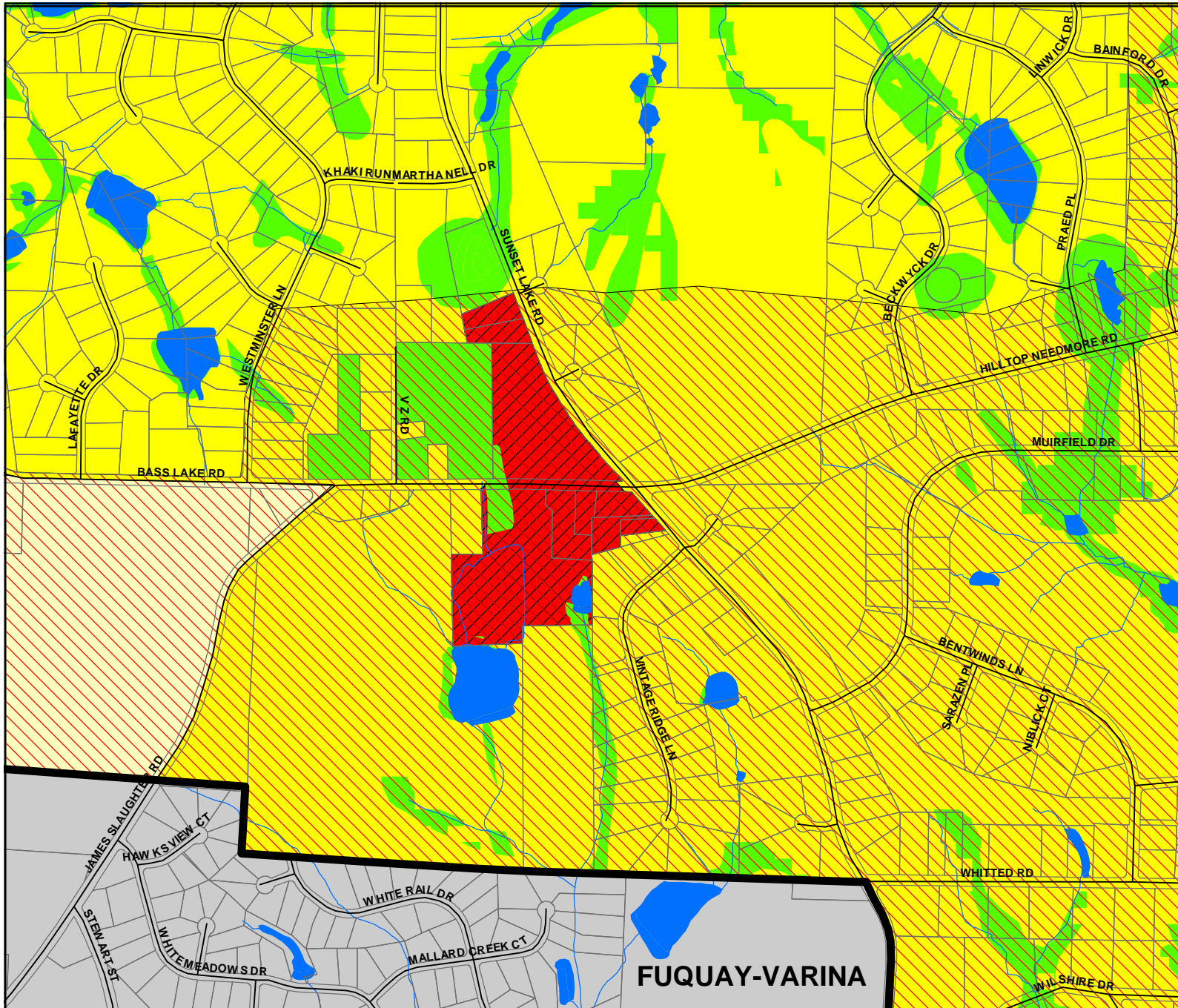
Existing Activity Centers

- Neighborhood
- Community
- Neighborhood

Proposed Activity Centers

- Regional
- Community
- Neighborhood
- Interchanges
- Roads
- Regional Rail
- Industrial
- Open Space
- Significant Natural Resource
- Planned Growth Area

Map Location: L:\projects\fuquay_garner\HILLTOPSUNSET\jns.mxd
 Map copy in same directory: \PDFs\Hilltopsunset.pdf
 Created by Jennifer Song
 Wake County Planning Department
 Printed at 04:13:01 PM on Sep 30, 2003



FUQUAY-VARINA